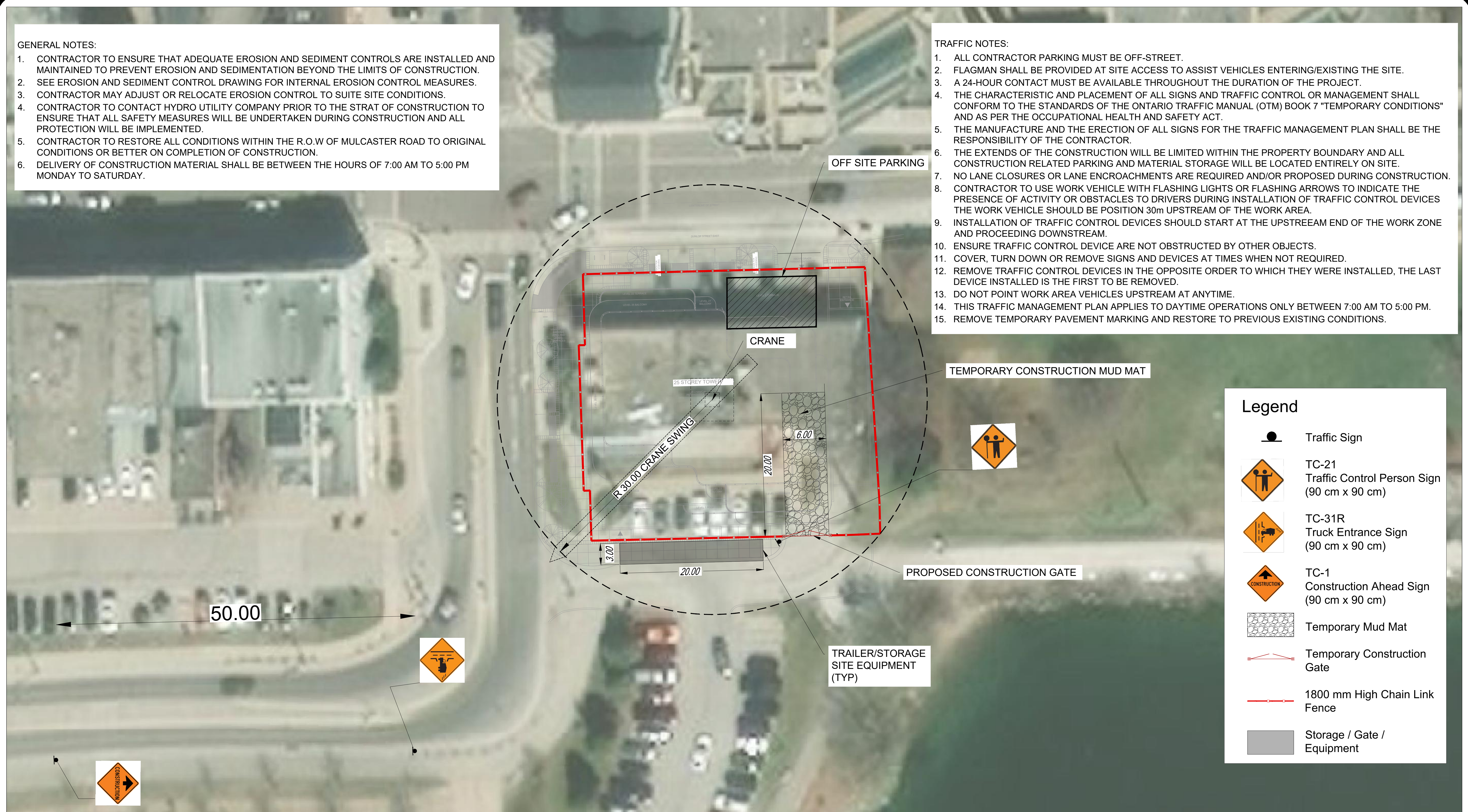


- GENERAL NOTES:
- 1. CONTRACTOR TO ENSURE THAT ADEQUATE EROSION AND SEDIMENT CONTROLS ARE INSTALLED AND MAINTAINED TO PREVENT EROSION AND SEDIMENTATION BEYOND THE LIMITS OF CONSTRUCTION.
 - 2. SEE EROSION AND SEDIMENT CONTROL DRAWING FOR INTERNAL EROSION CONTROL MEASURES.
 - 3. CONTRACTOR MAY ADJUST OR RELOCATE EROSION CONTROL TO SUITE SITE CONDITIONS.
 - 4. CONTRACTOR TO CONTACT HYDRO UTILITY COMPANY PRIOR TO THE START OF CONSTRUCTION TO ENSURE THAT ALL SAFETY MEASURES WILL BE UNDERTAKEN DURING CONSTRUCTION AND ALL PROTECTION WILL BE IMPLEMENTED.
 - 5. CONTRACTOR TO RESTORE ALL CONDITIONS WITHIN THE R.O.W OF MULCASTER ROAD TO ORIGINAL CONDITIONS OR BETTER ON COMPLETION OF CONSTRUCTION.
 - 6. DELIVERY OF CONSTRUCTION MATERIAL SHALL BE BETWEEN THE HOURS OF 7:00 AM TO 5:00 PM MONDAY TO SATURDAY.

- TRAFFIC NOTES:
- 1. ALL CONTRACTOR PARKING MUST BE OFF-STREET.
 - 2. FLAGMAN SHALL BE PROVIDED AT SITE ACCESS TO ASSIST VEHICLES ENTERING/EXISTING THE SITE.
 - 3. A 24-HOUR CONTACT MUST BE AVAILABLE THROUGHOUT THE DURATION OF THE PROJECT.
 - 4. THE CHARACTERISTIC AND PLACEMENT OF ALL SIGNS AND TRAFFIC CONTROL OR MANAGEMENT SHALL CONFORM TO THE STANDARDS OF THE ONTARIO TRAFFIC MANUAL (OTM) BOOK 7 "TEMPORARY CONDITIONS" AND AS PER THE OCCUPATIONAL HEALTH AND SAFETY ACT.
 - 5. THE MANUFACTURE AND THE ERECTION OF ALL SIGNS FOR THE TRAFFIC MANAGEMENT PLAN SHALL BE THE RESPONSIBILITY OF THE CONTRACTOR.
 - 6. THE EXTENDS OF THE CONSTRUCTION WILL BE LIMITED WITHIN THE PROPERTY BOUNDARY AND ALL CONSTRUCTION RELATED PARKING AND MATERIAL STORAGE WILL BE LOCATED ENTIRELY ON SITE.
 - 7. NO LANE CLOSURES OR LANE ENCROACHMENTS ARE REQUIRED AND/OR PROPOSED DURING CONSTRUCTION.
 - 8. CONTRACTOR TO USE WORK VEHICLE WITH FLASHING LIGHTS OR FLASHING ARROWS TO INDICATE THE PRESENCE OF ACTIVITY OR OBSTACLES TO DRIVERS DURING INSTALLATION OF TRAFFIC CONTROL DEVICES THE WORK VEHICLE SHOULD BE POSITION 30m UPSTREAM OF THE WORK AREA.
 - 9. INSTALLATION OF TRAFFIC CONTROL DEVICES SHOULD START AT THE UPSTREAM END OF THE WORK ZONE AND PROCEEDING DOWNSTREAM.
 - 10. ENSURE TRAFFIC CONTROL DEVICE ARE NOT OBSTRUCTED BY OTHER OBJECTS.
 - 11. COVER, TURN DOWN OR REMOVE SIGNS AND DEVICES AT TIMES WHEN NOT REQUIRED.
 - 12. REMOVE TRAFFIC CONTROL DEVICES IN THE OPPOSITE ORDER TO WHICH THEY WERE INSTALLED, THE LAST DEVICE INSTALLED IS THE FIRST TO BE REMOVED.
 - 13. DO NOT POINT WORK AREA VEHICLES UPSTREAM AT ANYTIME.
 - 14. THIS TRAFFIC MANAGEMENT PLAN APPLIES TO DAYTIME OPERATIONS ONLY BETWEEN 7:00 AM TO 5:00 PM.
 - 15. REMOVE TEMPORARY PAVEMENT MARKING AND RESTORE TO PREVIOUS EXISTING CONDITIONS.



Legend

- Traffic Sign
- TC-21 Traffic Control Person Sign (90 cm x 90 cm)
- TC-31R Truck Entrance Sign (90 cm x 90 cm)
- TC-1 Construction Ahead Sign (90 cm x 90 cm)
- Temporary Mud Mat
- Temporary Construction Gate
- 1800 mm High Chain Link Fence
- Storage / Gate / Equipment