

KEY MAP

GENERAL NOTES

CONTRACTOR IS RESPONSIBLE FOR ALL LOCATES INCLUDING ALL UNDERGROUND SERVICES PRIOR TO ANY EXCAVATION OR INSTALLATIONS. THE CONTRACTOR IS REQUIRED TO NOTIFY THE VARIOUS UTILITY COMPANIES 48 HOURS PRIOR TO THE COMMENCEMENT OF ANY WORK.

ANY ACCOMPANYING DOCUMENTATION RELATING TO THE LANDSCAPE PLAN AND/OR PRESERVATION PLAN SUCH AS TENDER DOCUMENTS AND CHANGE NOTICES ARE TO BE ENDORSED BY J.D.B. ASSOCIATES LIMITED PRIOR TO THE BEGINNING OF ANY SITE WORKS. IN THE EVENT THAT OF A DISCREPANCY THE DRAWING SHALL BE ASSUMED CORRECT.

IT IS THE RESPONSIBILITY OF THE PERSON OR PERSONS RESPONSIBLE FOR THE CONSTRUCTED WORKS TO NOTIFY THE LANDSCAPE ARCHITECT WHEN PREPARED FOR ANY REQUIRED INSPECTIONS AND SIGN OFFS.

SCHEDULED MEETINGS SHALL TAKE PLACE AT THE CLOSEST MUTUALLY CONVENIENT TIME.

No.	REVISION	DATE	AP
-----	----------	------	----

[illegible]

ALL DRAWINGS AND SPECIFICATIONS ARE INSTRUMENTS OF SERVICE A ARE THE PROPERTY OF JDB ASSOCIATES LIMITED. DRAWINGS ARE NOT TO BE MODIFIED AND/OR REPRODUCED WITHOUT THE WRITTEN CONSENT OF A ASSOCIATES LIMITED. REPRODUCTION OF DRAWINGS IN ANY FORM WITHOUT THE WRITTEN CONSENT OF JDB ASSOCIATES LIMITED IS PROHIBITED. AT ANY TIME JDB ASSOCIATES LIMITED ACCEPTS NO LIABILITY FOR THE DRAWING CONTENT OR WORKS RESULTING FROM SAID REPRODUCTION. DRAWINGS MAY BE REPRODUCED BY MUNICIPAL AND GOVERNMENT AGENCIES RESPONSIBLE FOR APPROVALS FOR THEIR OWN USE. THE USER TESTS AND APPROVES THE DRAWING. THE USER (DRAWING(S) FOR GOVERNMENT OR MUNICIPAL AGENCIES WHETHER APPROVED OR NOT IN THE EVENT THAT ACCOUNTS ARE NOT SETTLED OR REMAIN OUTSTANDING.

IT IS THE RESPONSIBILITY OF THE CONTRACTOR TO VERIFY ALL DIMENSIONS ON THE SITE AND REPORT ANY DISCREPANCIES OR VARIATIONS FROM THE SUPPLIED INFORMATION TO THE LANDSCAPE ARCHITECT WITH THE PROJECT. JDB ASSOCIATES LIMITED IS NOT RESPONSIBLE FOR THE ACCURACY OF SURVEY, ARCHITECTURAL, MECHANICAL, ENGINEERING OR ELECTRICAL INFORMATION SHOWN ON THE DRAWING. FOR FURTHER INFORMATION REFER TO APPROPRIATE SURVEY, ARCHITECTURAL, MECHANICAL, ENGINEERING ELECTRICAL DRAWINGS PRIOR TO PROCEEDING WITH ANY WORKS.

THIS DRAWING IS NOT TO BE SCALED



Client info:
Pratt Homes Inc.



JDB ASSOCIATES LTD.

*Urban Designers
Landscape Architects
Arborists*

*274 Burton Ave., Suite 1201
Barrie, Ontario
L4N 5W4*

Fax: 705-722-5660
Tel: 705-722-6278

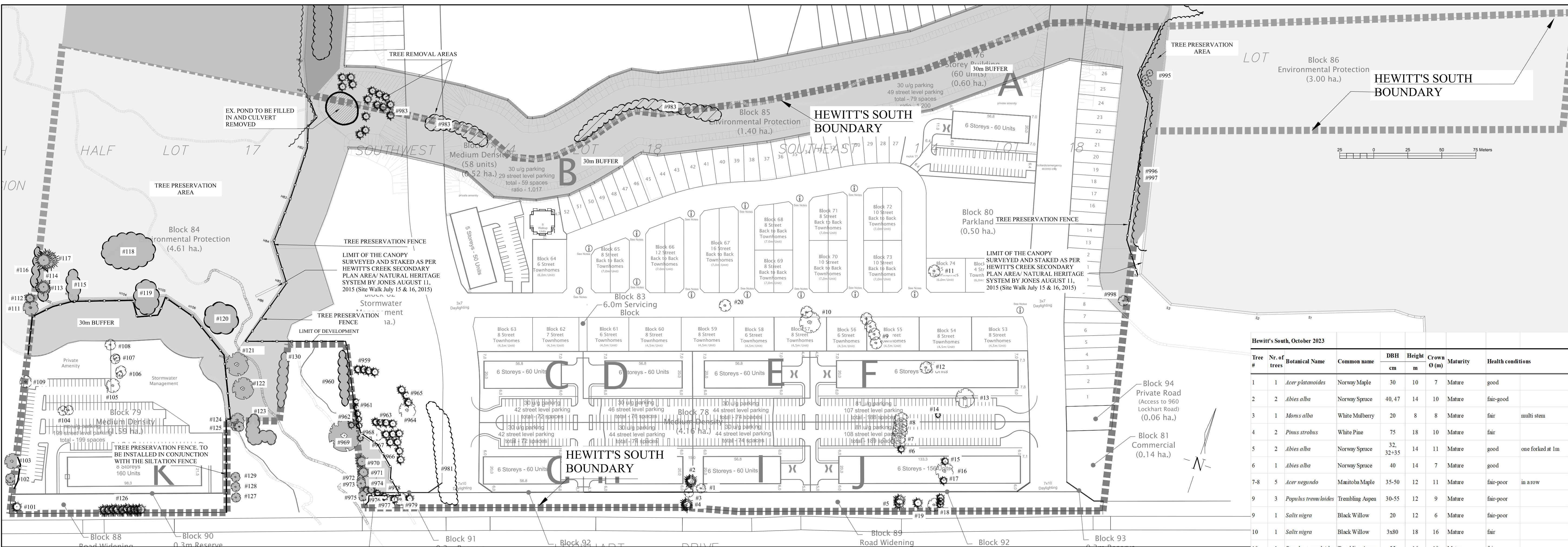
Hewitt's South

Part of Lot 19, and Part of Lot 20, Concession 12
Former Township of Innisfil, now in the

City of Barrie

TREE INVENTORY/PRESERVATION PLAN

SCALE: 1/1500	DESIGNED BY: StT	REVIEWED BY: NB
CITY FILE No.	OUR FILE REF. # 28-23	TP-1




TREE INVENTORY


Hewitt's South Tree Inventory - October 2023									
Tree #	# of Trees	Common Name	Botanical Name	DBH	Height	Crown Ø	Maturity	Health Conditions	
				cm	m	(m)			
101	1	Scots Pine	<i>Pinus sylvestris</i>	30	14	7	Mature	Fair	With grape vines
102	1	Manitoba Maple	<i>Acer negundo</i>	30+30+15	14	6	Mature	Fair	
102	1	Manitoba Maple	<i>Acer negundo</i>	3x15	14	6	Mature	Fair	
103	1	Black Willow	<i>Salix nigra</i>	4x35	14	11	Mature	Good	
104	3	White Mulberry	<i>Morus alba</i>	19	10	7	Immature	Fair-Poor	
104	1	Common Apple	<i>Malus spp.</i>	19	10	7	Immature	Fair-Poor	
105	1	Trembling Aspen	<i>Populus tremuloides</i>	35	12	10	Mature	Fair	
106	1	White Ash	<i>Fraxinus americana</i>	24	10	5	Mature	Good	
106	1	White Ash	<i>Fraxinus americana</i>	30	10	5	Mature	Good	
107	1	White Mulberry	<i>Morus alba</i>	26	10	5	Mature	Good	
107	1	White Birch	<i>Betula papyrifera</i>	20+18+17	10	7	Mature	Good	
108	1	Common Apple	<i>Malus spp.</i>	27	8	8	Mature	Fair	
109	1	Black Willow	<i>Salix nigra</i>	30	12	9	Mature	Good	
110	1	Black Willow	<i>Salix nigra</i>	35+25+15	12	8	Mature	Fair	Forked at 1m
111	1	Black Willow	<i>Salix nigra</i>	40	14	11.5	Mature	Fair	Overhanging 4.5m
112	1	Scots Pine	<i>Pinus sylvestris</i>	33	12	7	Mature	Good-Fair	With grape vines
113	1	Scots Pine	<i>Pinus sylvestris</i>	3x20	12	8.5	Mature	Fair	Forked at 1m
114	Group	Eastern White Cedar	<i>Thuja occidentalis</i>	Up to 25	12	4		Good	
115	Group	Eastern White Cedar	<i>Thuja occidentalis</i>	Up to 25	12	4		Good	
116	Hedge	Eastern White Cedar	<i>Thuja occidentalis</i>	Up to 15	12	4		Good	With immature Sugar Maples, Willow and Aspen
117	4	Scots Pine	<i>Pinus sylvestris</i>	Up to 25	12	10		Good	
118	EP Land	Black Willow	<i>Salix nigra</i>	60	14	14	Mature	Fair-Poor	100% Black Willow, coverage 85%
119	Group	Black Willow	<i>Salix nigra</i>	60	14	14		Fair-Poor	
120	Group	Black Willow	<i>Salix nigra</i>	Up to 90	16	16		Fair-Good	80% Black Willow, 20% White Pine
120	Group	White Pine	<i>Pinus strobus</i>	30	19	9		Fair-Good	
121	1	Black Willow	<i>Salix nigra</i>	2x 100	18	17	Mature	Fair	Creek bank
122	1	Black Willow	<i>Salix nigra</i>	90	18	16	Mature	Fair-Poor	
123	Group	Eastern White Cedar	<i>Thuja occidentalis</i>	Up to 40	8			Fair	
124	1	Silver Maple	<i>Acer saccharinum</i>	4x20	12	10	Mature	Fair	Forked at 1m
125	3	Norway Maple	<i>Acer platanoides</i>	20	10	7	Mature	Good	
126	Row	Scots Pine	<i>Pinus sylvestris</i>	15	11	6	Immature	Fair	
127	1	Sugar Maple	<i>Acer saccharum</i>	27	5	5	Mature	Fair	Some bark damages
128	1	Sugar Maple	<i>Acer saccharum</i>	25	5	5	Mature	Fair	Some bark damages
129	1	Sugar Maple	<i>Acer saccharum</i>	25	5	5	Mature	Fair	Some bark damages
130	Row	Scots Pine	<i>Pinus sylvestris</i>	20-35	14	8	Mature	Fair	


NO ENDANGERED SPECIES OF TREES HAVE BEEN IDENTIFIED ON THE SUBJECT LANDS.


Hewitt's South - Hedgerow													
Tree group #	Canopy cover, %	No. of trees	Species	Common Name	Freq. %	DBH cm	Height m	Canopy m	Maturity	Health conditions	Location		
981	99	1	<i>Picea abies</i>	Norway Spruce		25	10-14	8	Mature	Good (conifers) - Poor (deciduous)	2.3m East of Dwy.		
		2	<i>Malus communis</i>	Apple sp.		20, 30							
		1	<i>Catalpa speciosa</i>	Northern Catalpa		60							
		1	<i>Picea glauca</i>	White Spruce		20							
		3	<i>Acer saccharum</i>	Sugar Maple		60, 60, 80							
		1	<i>Picea pungens</i>	Colorado		25							
		1	<i>Prunus serotina</i>	Black Cherry		25							
	100	21	<i>Picea pungens</i>	Colorado		25	16	6					West of Driveway
		1	<i>Picea glauca</i>	White Spruce		20							


SUBJECT LANDS.


 EXISTING TREES SHARED WITH/ OR ON ADJACENT SITE AND TREES ON SITE TO BE PRESERVED.


 EXISTING TREES TO BE REMOVED.

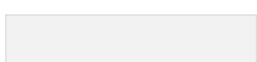
 TREE GROUP TO BE PRESERVED.

 TREE GROUP TO BE REMOVED.

 #7 TREE IDENTIFICATION NUMBER. REFER TO TREE LIST ON THIS PAGE

 TREE PRESERVATION FENCE AS PER P1232 ON TP-2.

 E.P. ZONE

 30m BUFFER ZONE

LEGEND

