



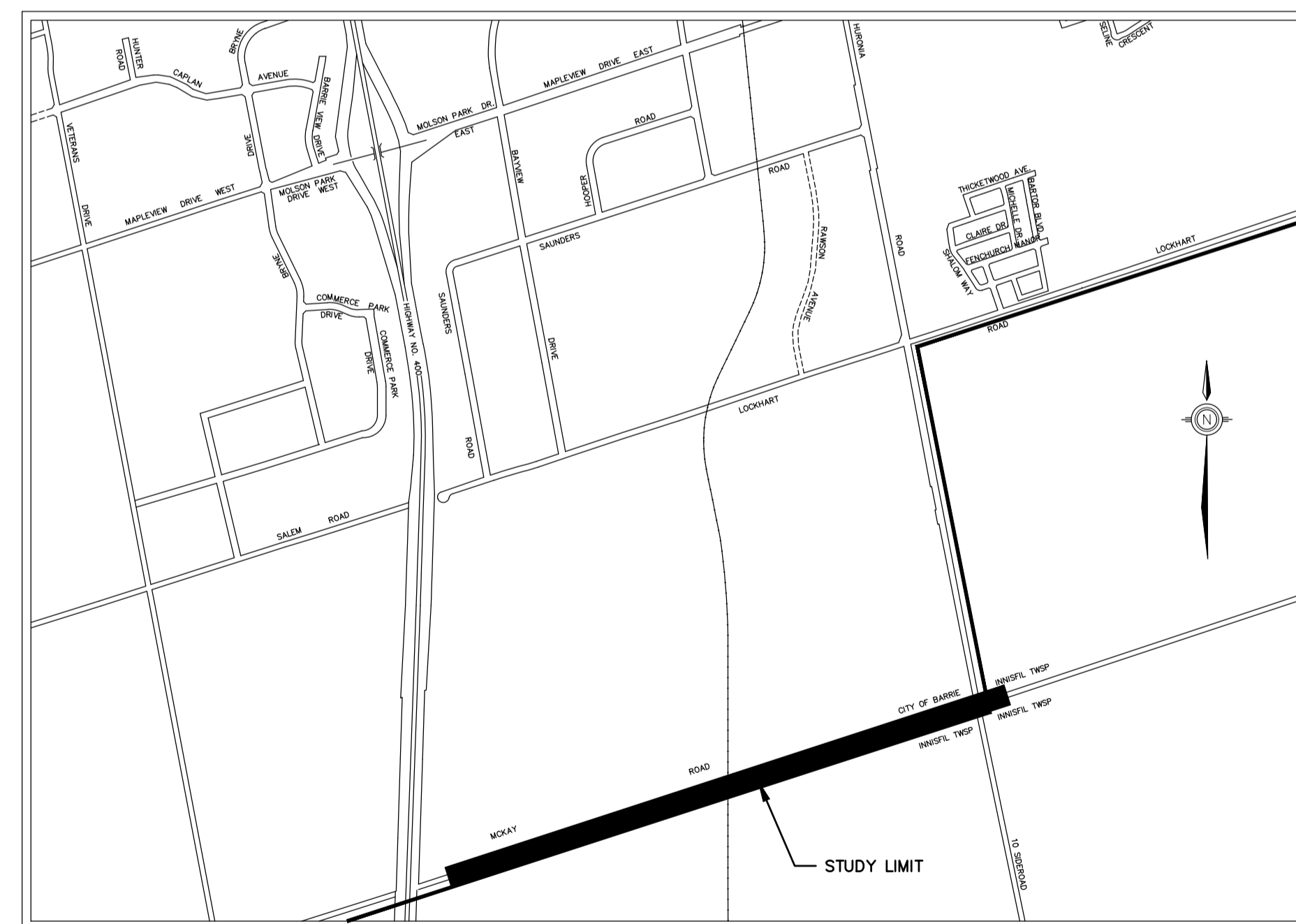
McKAY ROAD - INTERIM DESIGN TRANSPORTATION IMPROVEMENTS

FROM HIGHWAY 400 TO HURONIA ROAD

CONTRACT #0000-00

LIST OF DRAWINGS

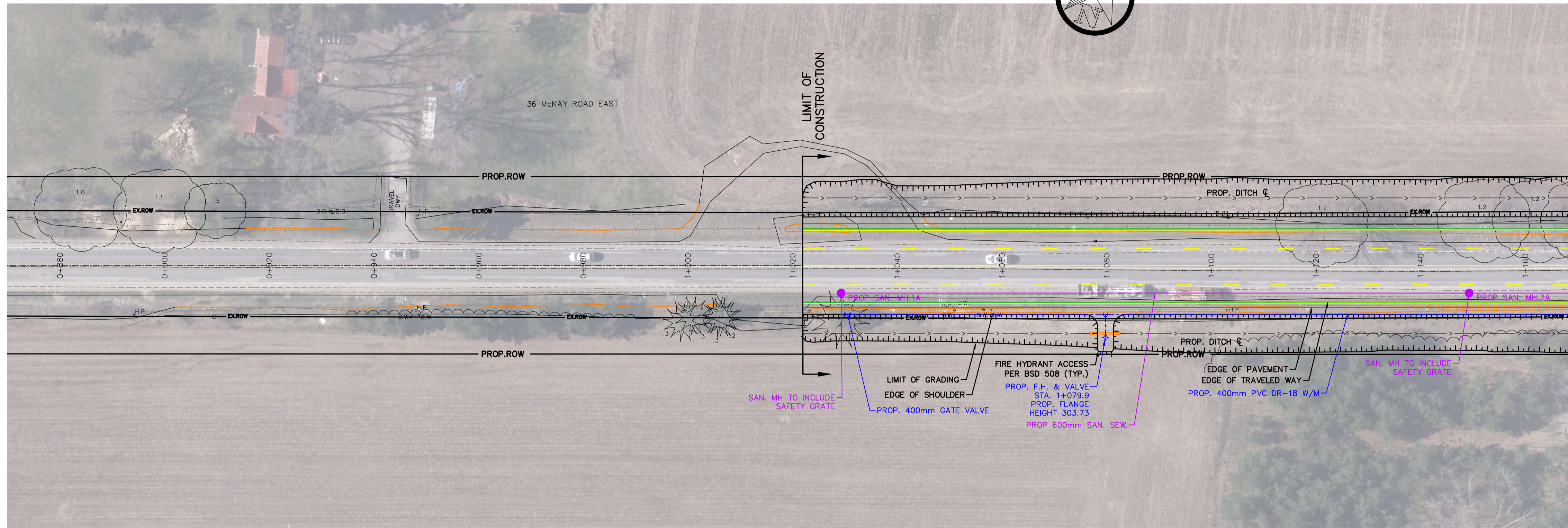
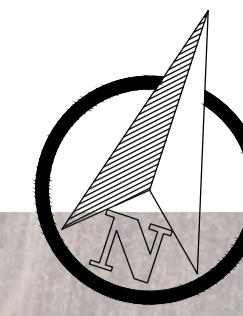
TITLE	
	- TITLE SHEET, KEYPLAN & LIST OF DRAWINGS
PP1	- PLAN & PROFILE - McKAY ROAD STA. 0+870 TO 1+170
PP2	- PLAN & PROFILE - McKAY ROAD STA. 1+170 TO 1+470
PP3	- PLAN & PROFILE - McKAY ROAD STA. 1+470 TO 1+770
PP4	- PLAN & PROFILE - McKAY ROAD STA. 1+770 TO 2+070
PP5	- PLAN & PROFILE - McKAY ROAD STA. 2+370 TO 2+670
PP6	- PLAN & PROFILE - McKAY ROAD STA. 2+370 TO 2+670
PP7	- PLAN & PROFILE - McKAY ROAD STA. 2+670 TO 2+970
D1	- TYPICAL CROSS SECTIONS



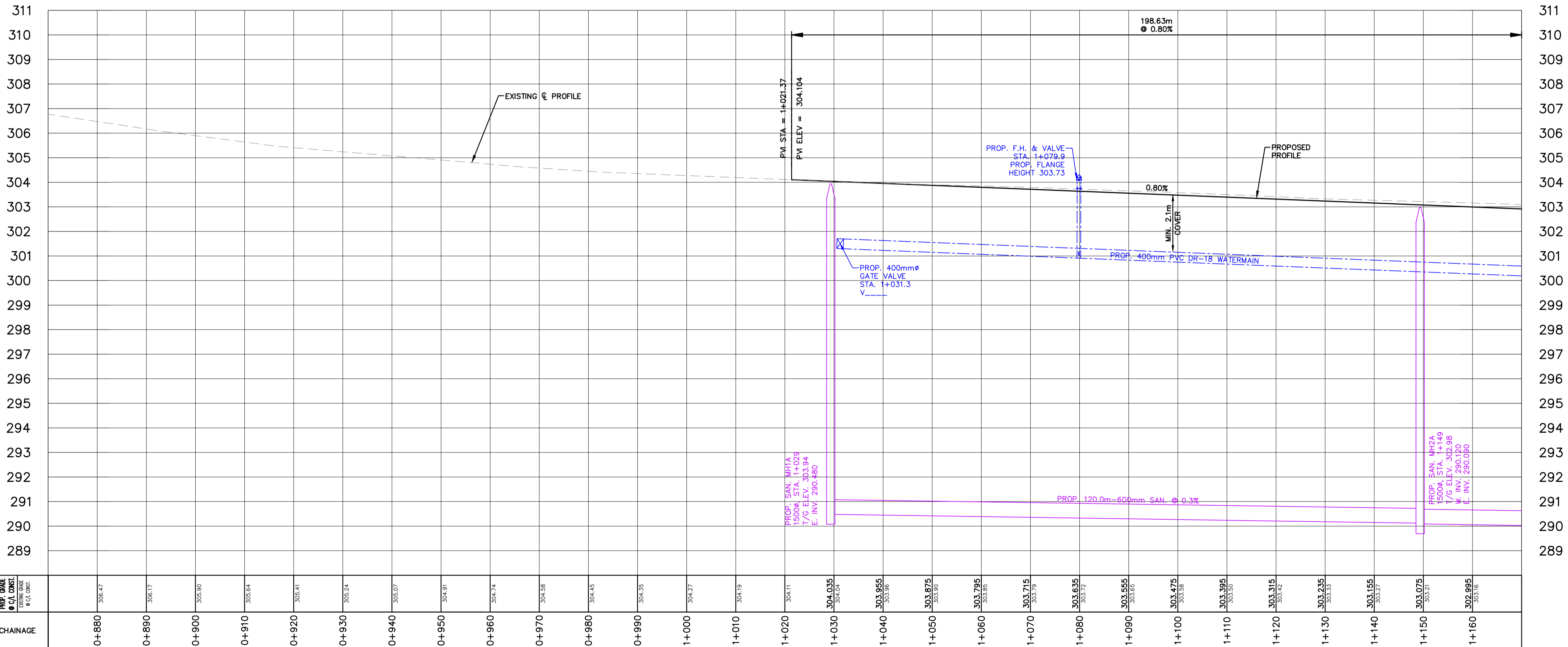
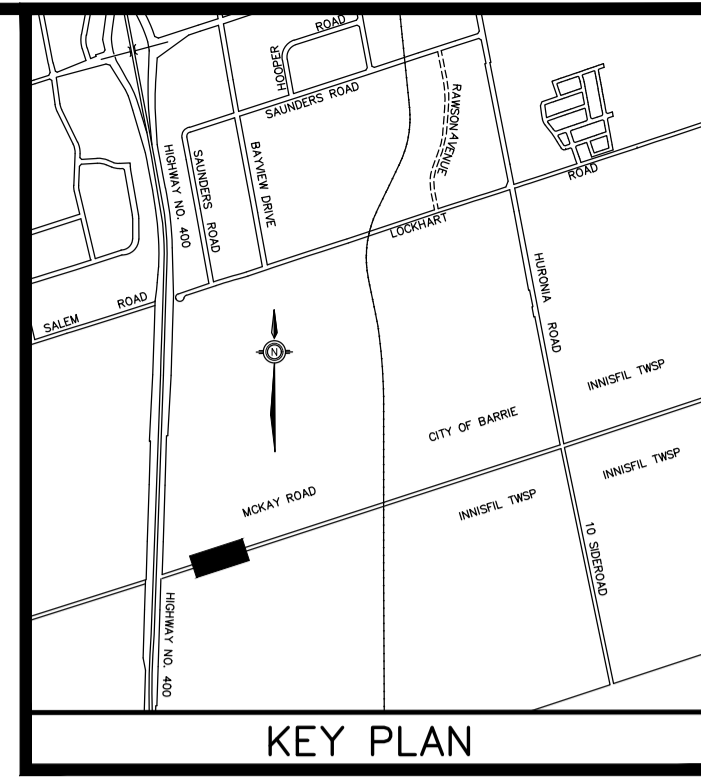
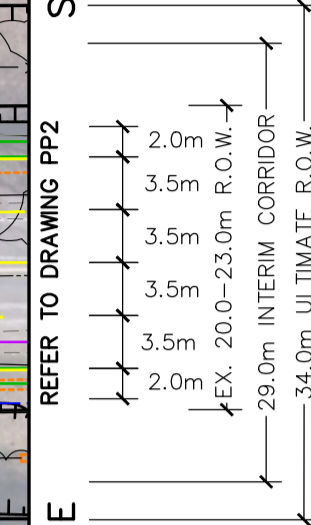
KEY PLAN
NOT TO SCALE

PUBLIC INFORMATION CENTRE
NOVEMBER 2018

McKAY ROAD



STA. 1+170
REFER TO DRAWING PP2
MATCH LINE



PROP. GRADE @ C.A. CONST. ELEV. (M) @ C.C. CONST.	CHAINAGE
306.47	0+880
306.17	0+890
305.90	0+900
305.64	0+910
305.41	0+920
305.24	0+930
305.07	0+940
304.91	0+950
304.74	0+960
304.58	0+970
304.45	0+980
304.35	0+990
304.27	1+000
304.19	1+010
304.11	1+020
304.035	1+030
303.955	1+040
303.875	1+050
303.795	1+060
303.715	1+070
303.635	1+080
303.555	1+090
303.475	1+100
303.395	1+110
303.315	1+120
303.235	1+130
303.155	1+140
303.075	1+150
302.995	1+160

GENERAL NOTES
REFER TO CURRENT CITY OF BARRIE STANDARDS FOR APPLICABLE GENERAL NOTES.

- LEGEND
- PROPOSED WATERMAIN, HYDRANTS & VALVES
 - PROPOSED SANITARY
 - PROPOSED STORM & CULVERTS
 - PROPOSED EDGE OF PAVEMENT & CURB
 - PROPOSED LINE PAINTING

BENCH MARKS

NO.	REVISIONS	DATE	APPROVED
1.	30% DRAFT SUBMISSION	02/2018	RRW
2.	30% SUBMISSION	02/2018	RRW
3.	60% DRAFT SUBMISSION	05/2018	RRW

CITY OF BARRIE
ACCEPTED

DATE:
DIRECTOR OF ENGINEERING

McKAY ROAD
IMPROVEMENTS

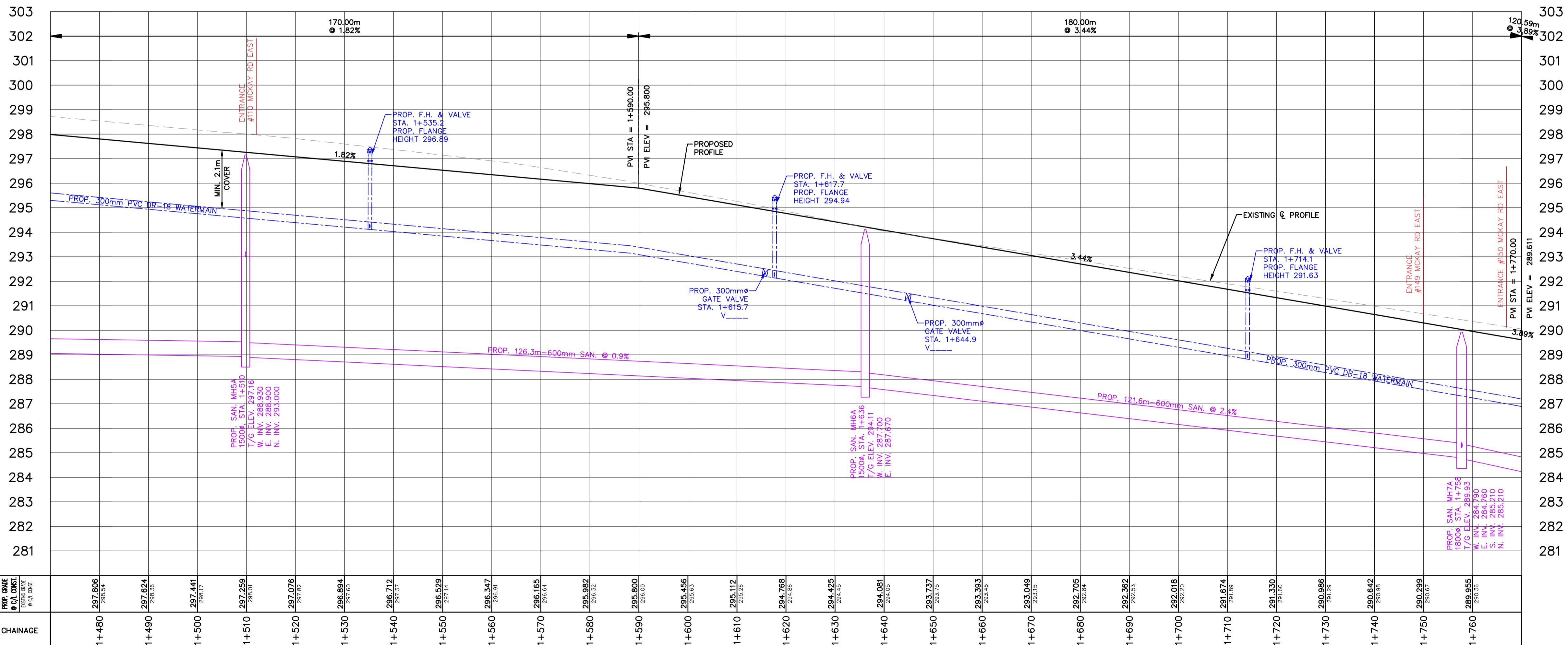
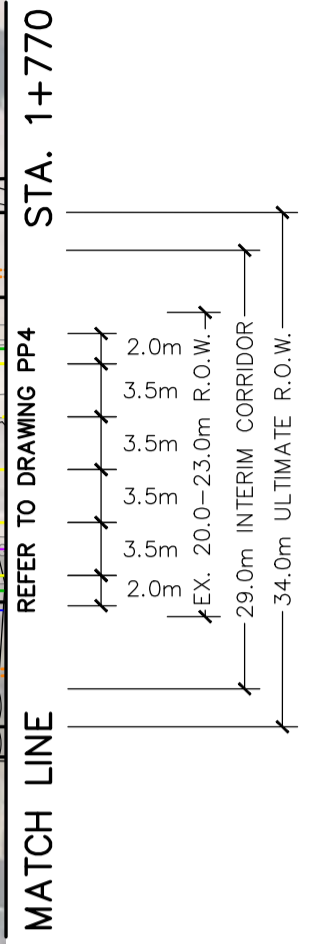
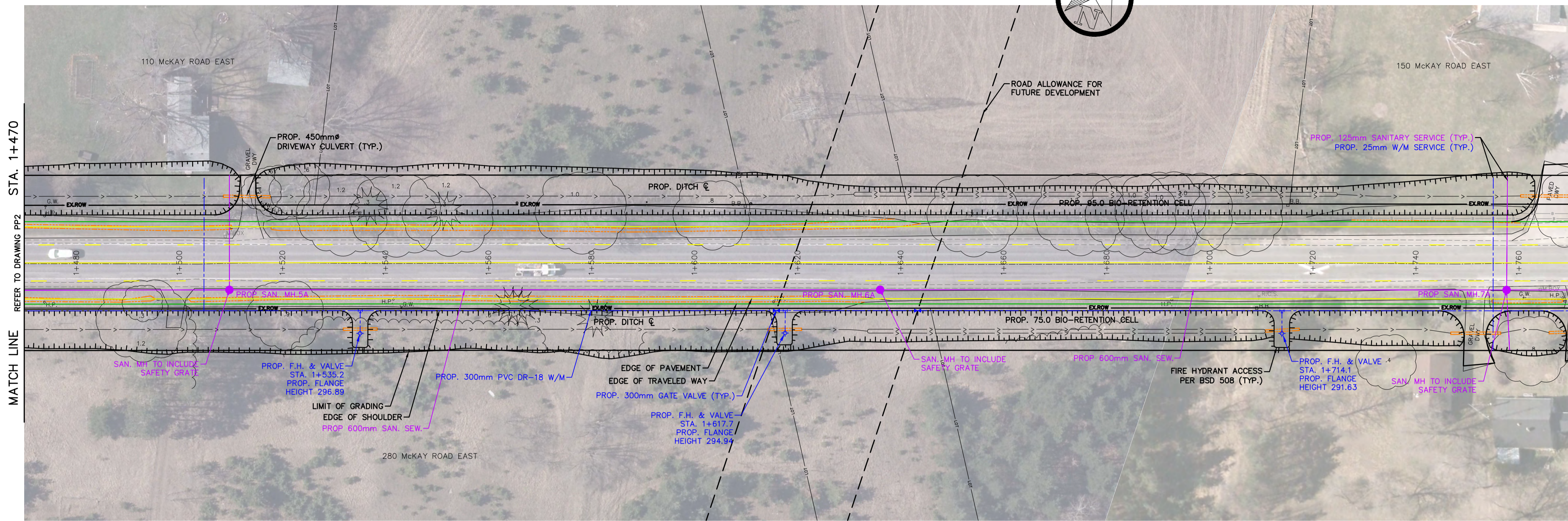
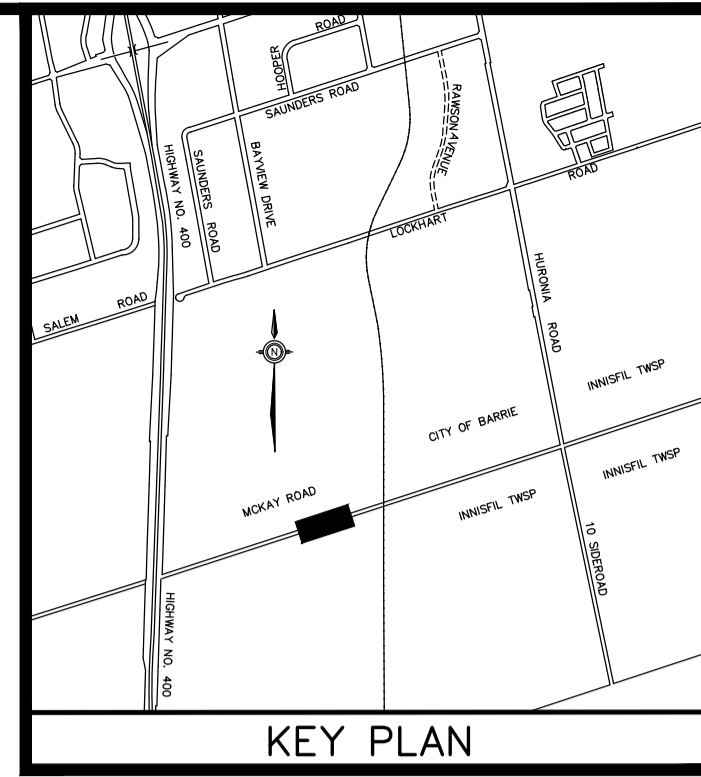
PLAN & PROFILE - McKAY ROAD
STA. 0+870 TO 1+170

Barrie
ENGINEERING DEPARTMENT

SCALE HOR. 1:500 VERT. 1:100
DESIGN CFH DRAWN DTE
REVIEWED TFH DATE 2018.01.16

CONTRACT NO. 20-_-_-
SHEET NO. PP1

McKAY ROAD



PROP. GRADE C.A. CONST. ELEV. (M)	297.806 296.554	297.624 296.35	297.441 296.17	297.259 295.97	297.076 295.78	296.894 295.59	296.712 295.40	296.529 295.21	296.347 295.02	296.165 294.83	295.982 294.64	295.800 294.45	295.618 294.26	295.436 294.07	295.254 293.88	295.072 293.69	294.890 293.50	294.708 293.31	294.526 293.12	294.344 292.93	294.162 292.74	293.980 292.55	293.798 292.36	293.616 292.17	293.434 291.98	293.252 291.79	293.070 291.60	292.888 291.41	292.706 291.22	292.524 291.03	292.342 290.84	292.160 290.65	291.978 290.46	291.796 290.27	291.614 290.08	291.432 290.00	291.250 290.00																
CHAINAGE	1+480	1+490	1+500	1+510	1+520	1+530	1+540	1+550	1+560	1+570	1+580	1+590	1+600	1+610	1+620	1+630	1+640	1+650	1+660	1+670	1+680	1+690	1+700	1+710	1+720	1+730	1+740	1+750	1+760	1+770	1+780	1+790	1+800	1+810	1+820	1+830	1+840	1+850	1+860	1+870	1+880	1+890	1+900	1+910	1+920	1+930	1+940	1+950	1+960	1+970	1+980	1+990	2+000

GENERAL NOTES
REFER TO CURRENT CITY OF BARRIE STANDARDS FOR APPLICABLE GENERAL NOTES.

LEGEND
 PROPOSED WATERMAIN, HYDRANTS & VALVES
 PROPOSED SANITARY
 PROPOSED STORM & CULVERTS
 PROPOSED EDGE OF PAVEMENT & CURB
 PROPOSED LINE PAINTING

BENCH MARKS

NO.	REVISIONS	DATE	APPROVED
1.	30% DRAFT SUBMISSION	02/2018	RRW
2.	30% SUBMISSION	02/2018	RRW
3.	60% DRAFT SUBMISSION	05/2018	RRW

CITY OF BARRIE
ACCEPTED

DATE:

DIRECTOR OF ENGINEERING

McKAY ROAD IMPROVEMENTS

PLAN & PROFILE - McKAY ROAD
STA. 1+470 TO 1+770

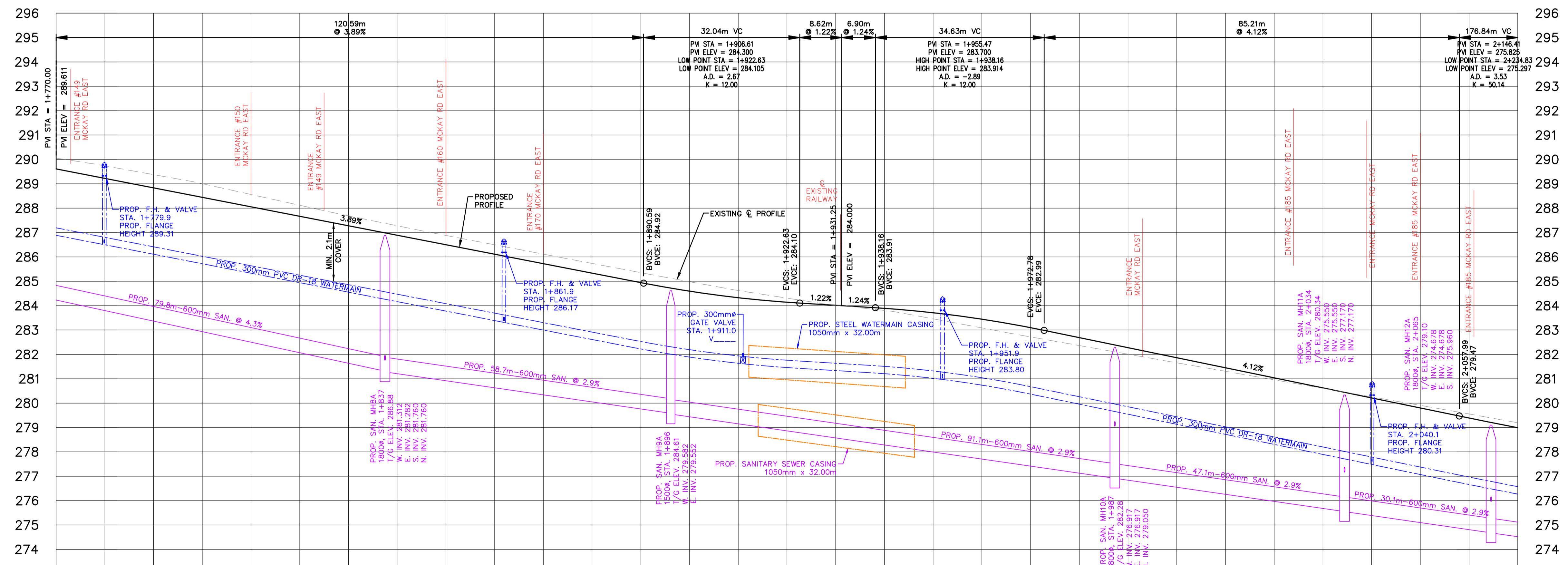
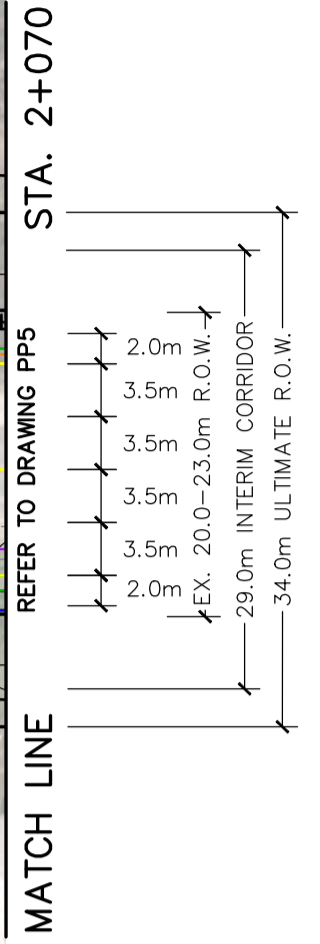
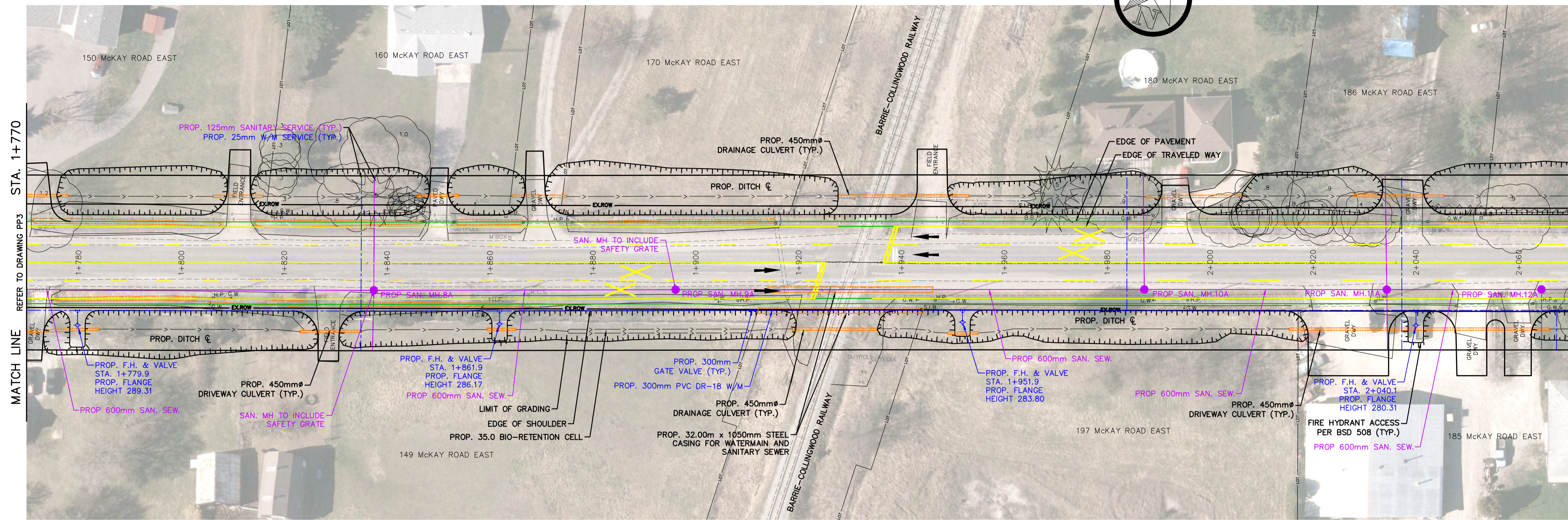
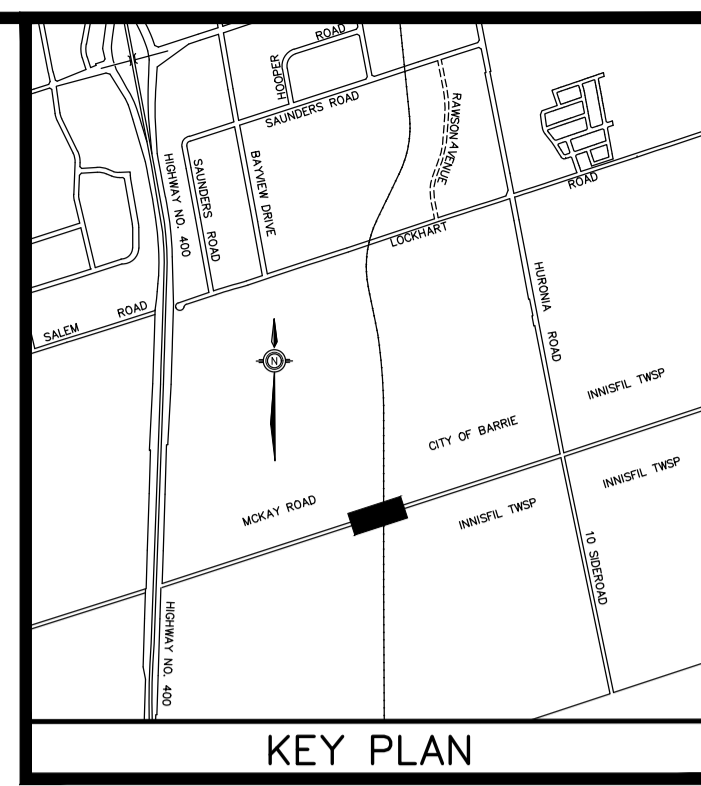
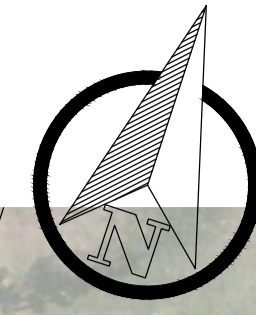
Barrie
ENGINEERING DEPARTMENT

SCALE HOR. 1:500 VERT. 1:100
DESIGN CFH DRAWN DTE
REVIEWED TFH DATE 2018.01.16

CONTRACT NO. 20-
SHEET NO. PP3

Printed by: 654675 on November 13, 2018 at 3:45pm
File: V:\171270\Drawings\Public Information\Barrie\171270-00pm-McKay-Interim (60)04.dwg Layout: pp3

McKAY ROAD



PROP. GRADE C.C. CONST. ELEV. (M)	289.222 289.774	288.633 289.138	288.445 289.000	288.056 288.595	287.667 288.132	287.278 287.614	286.890 287.228	286.501 286.988	286.112 286.500	285.723 286.111	285.335 285.719	284.946 285.335	284.554 284.946	284.160 284.554	283.768 284.160	283.375 283.768	282.980 283.375	282.586 282.980	282.190 282.586	281.795 282.190	281.400 281.795	281.005 281.400	280.610 281.005	280.215 280.610	279.820 280.215	279.425 279.820	279.030 279.425	288.635 289.030	
CHAINAGE	1+780	1+790	1+800	1+810	1+820	1+830	1+840	1+850	1+860	1+870	1+880	1+890	1+900	1+910	1+920	1+930	1+940	1+950	1+960	1+970	1+980	1+990	2+000	2+010	2+020	2+030	2+040	2+050	2+060

GENERAL NOTES
REFER TO CURRENT CITY OF BARRIE STANDARDS FOR APPLICABLE GENERAL NOTES.

LEGEND

- PROPOSED WATERMAIN, HYDRANTS & VALVES
- PROPOSED SANITARY
- PROPOSED STORM & CULVERTS
- PROPOSED EDGE OF PAVEMENT & CURB
- PROPOSED LINE PAINTING

BENCH MARKS

NO.	REVISIONS	DATE	APPROVED
1.	30% DRAFT SUBMISSION	02/2018	RRW
2.	30% SUBMISSION	02/2018	RRW
3.	60% DRAFT SUBMISSION	05/2018	RRW

CITY OF BARRIE
ACCEPTED

DATE:

DIRECTOR OF ENGINEERING

McKAY ROAD IMPROVEMENTS

PLAN & PROFILE - McKAY ROAD
STA. 1+770 TO 2+070

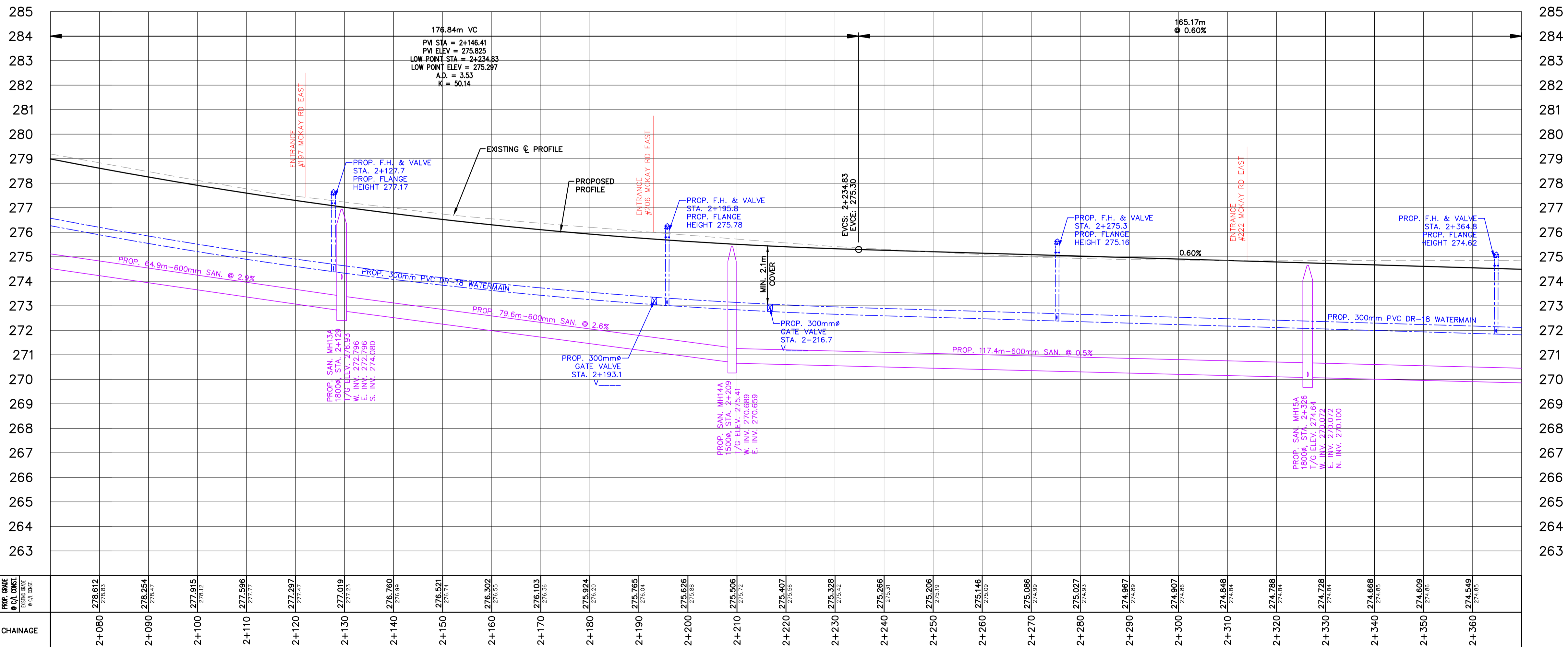
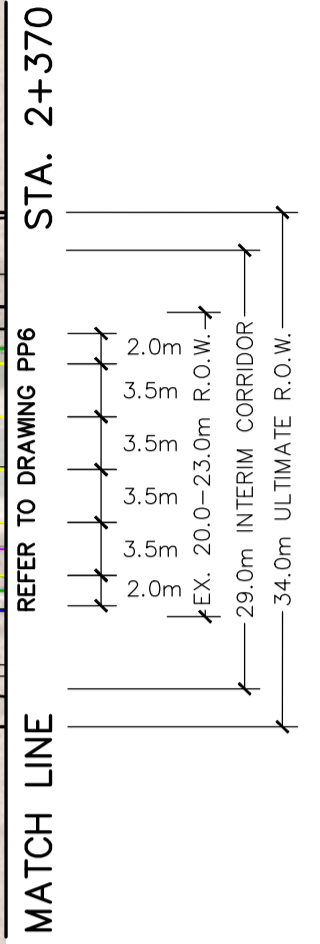
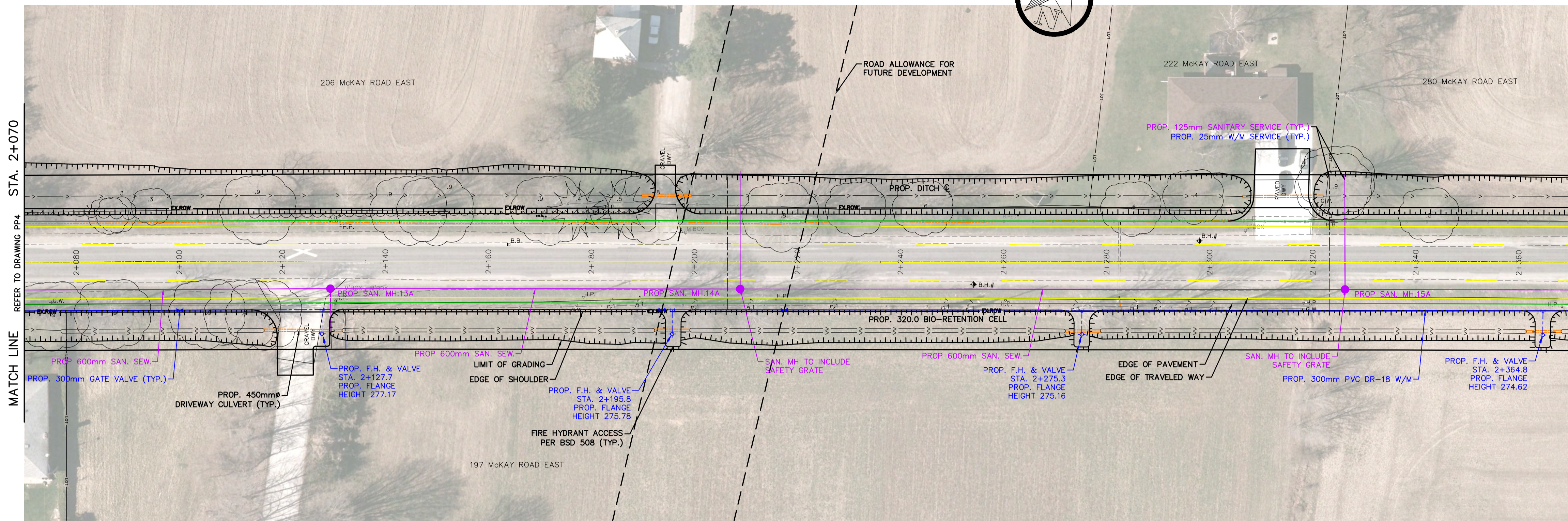
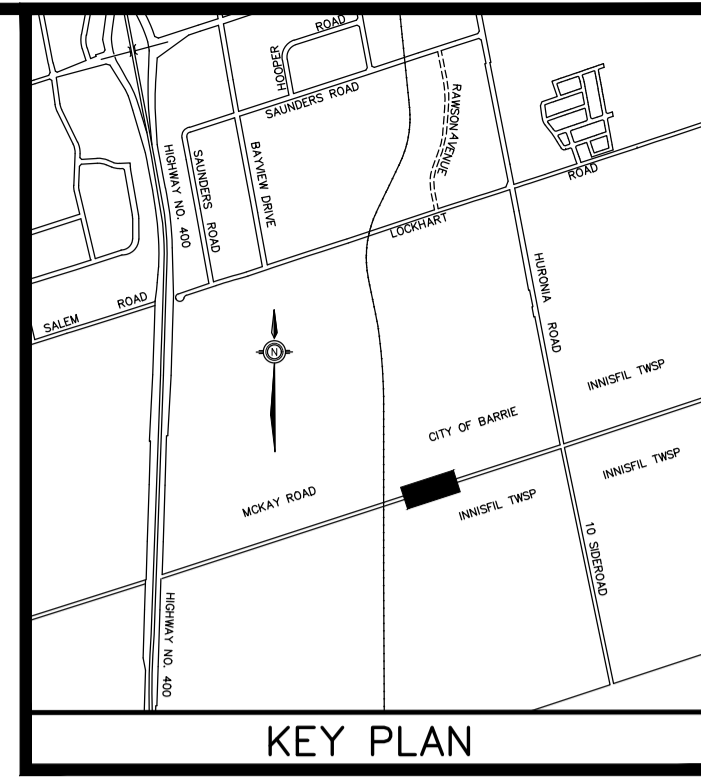
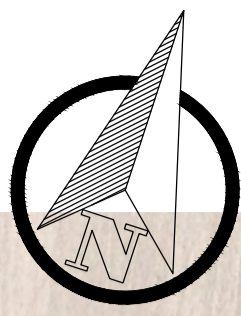
Barrie
ENGINEERING DEPARTMENT

SCALE HOR. 1:500 VERT. 1:100
DESIGN CFH DRAWN DTE
REVIEWED TFH DATE 2018.01.16

CONTRACT NO. 20-
SHEET NO. PP4

Printed by: 656677, on November 15, 2018, at 1:45pm
File: V:\17121\Drawings\Public Information\Barrie\17121-0000-McKay-Interim (R0) (4).dwg, Layout: 894

McKAY ROAD



PROP. GRADE @ C.A. CONST. # OF CONST.	2+080	2+090	2+100	2+110	2+120	2+130	2+140	2+150	2+160	2+170	2+180	2+190	2+200	2+210	2+220	2+230	2+240	2+250	2+260	2+270	2+280	2+290	2+300	2+310	2+320	2+330	2+340	2+350	2+360
CHAINAGE	278.612 278.633	278.254 278.47	277.915 278.12	277.596 277.77	277.297 277.47	277.019 277.21	276.760 276.99	276.501 276.74	276.302 276.53	276.103 276.36	275.924 276.20	275.765 276.04	275.606 275.88	275.506 275.72	275.407 275.58	275.328 275.52	275.266 275.33	275.206 275.19	275.146 275.109	275.086 275.09	275.027 274.93	274.967 274.89	274.907 274.86	274.848 274.84	274.788 274.81	274.728 274.84	274.668 274.85	274.609 274.86	274.549 274.85

GENERAL NOTES
REFER TO CURRENT CITY OF BARRIE STANDARDS FOR APPLICABLE GENERAL NOTES.

LEGEND

- PROPOSED WATERMAIN, HYDRANTS & VALVES
- PROPOSED SANITARY
- PROPOSED STORM & CULVERTS
- PROPOSED EDGE OF PAVEMENT & CURB
- PROPOSED LINE PAINTING

BENCH MARKS

NO.	REVISIONS	DATE	APPROVED
1.	30% DRAFT SUBMISSION	02/2018	RRW
2.	30% SUBMISSION	02/2018	RRW
3.	60% DRAFT SUBMISSION	05/2018	RRW

**CITY OF BARRIE
ACCEPTED**

DATE:

DIRECTOR OF ENGINEERING

**McKAY ROAD
IMPROVEMENTS**

PLAN & PROFILE - McKAY ROAD
STA. 2+070 TO 2+370

Barrie
ENGINEERING DEPARTMENT

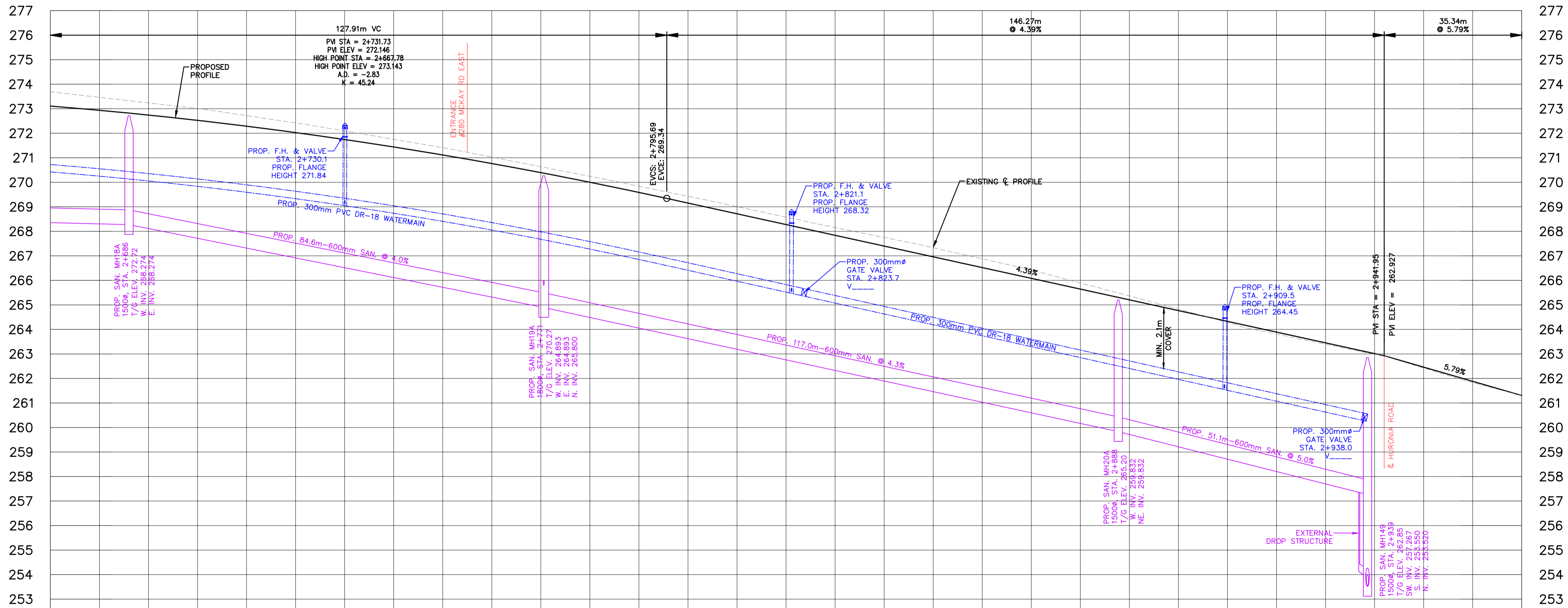
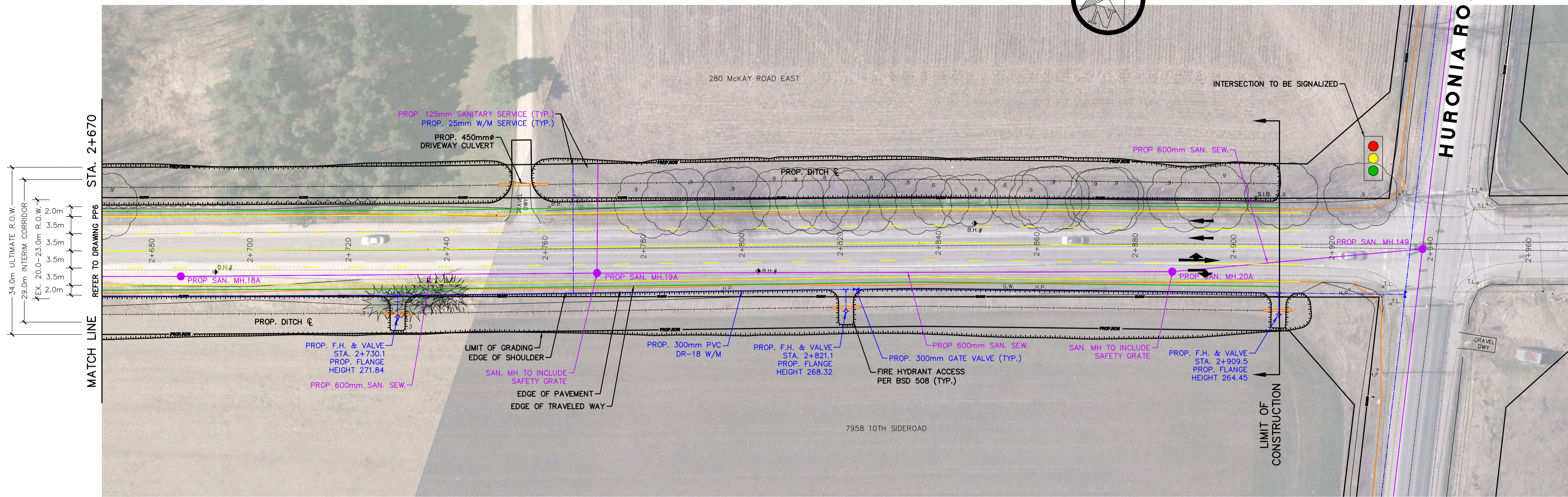
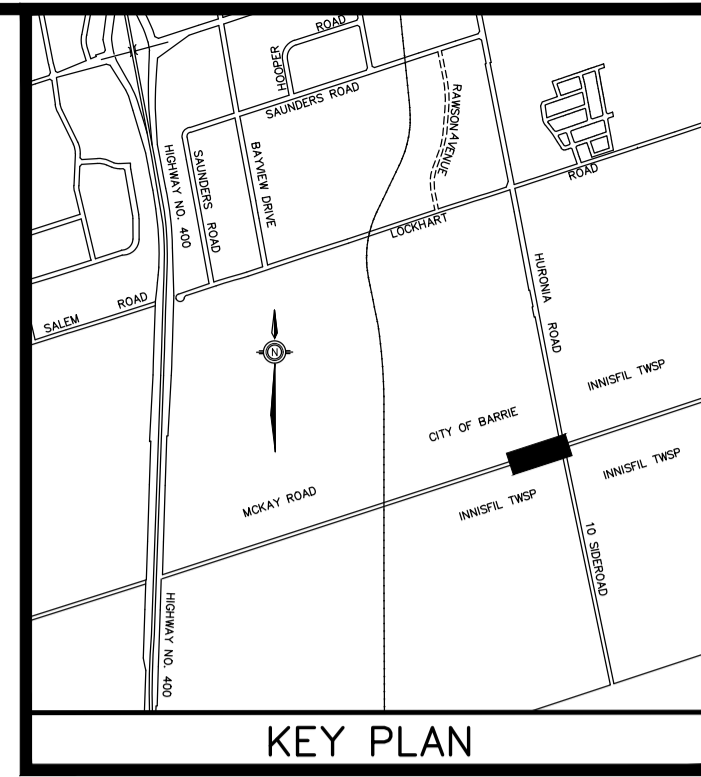
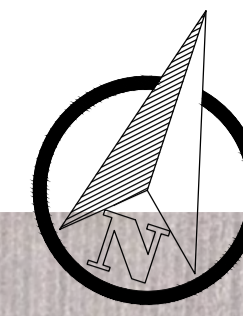
SCALE HOR. 1:500 VERT. 1:100

DESIGN CFH DRAWN DTE
REVIEWED TFH DATE 2018.01.16

CONTRACT NO. 20-_-_-
SHEET NO. PP5

Prepared by: [Name], on: [Date], at: [Location], File: [Filename], Layout: [Layout]

McKAY ROAD



PROP. GRADE @ C.A. CORST. @ 1% SLOPE	272.836 272.846	272.742 272.742	272.526 272.507	272.288 272.272	272.028 272.042	271.745 271.645	271.441 271.75	271.114 271.141	270.766 271.03	270.395 270.684	270.002 270.24	269.587 269.84	269.152 269.44	268.714 269.01	268.275 268.55	267.837 268.16	267.398 267.75	266.960 270.53	266.521 266.88	266.082 266.42	265.644 265.90	265.205 265.37	264.767 264.83	264.328 264.28	263.890 263.81	263.451 263.39	263.013 262.99	262.574 262.42	262.135 261.83
CHAINAGE	2+680	2+690	2+700	2+710	2+720	2+730	2+740	2+750	2+760	2+770	2+780	2+790	2+800	2+810	2+820	2+830	2+840	2+850	2+860	2+870	2+880	2+890	2+900	2+910	2+920	2+930	2+940	2+950	2+960

GENERAL NOTES
REFER TO CURRENT CITY OF BARRIE STANDARDS FOR APPLICABLE GENERAL NOTES.

- LEGEND
- PROPOSED WATERMAIN, HYDRANTS & VALVES
 - PROPOSED SANITARY
 - PROPOSED STORM & CULVERTS
 - PROPOSED EDGE OF PAVEMENT & CURB
 - PROPOSED LINE PAINTING

BENCH MARKS

NO.	REVISIONS	DATE	APPROVED
1.	30% DRAFT SUBMISSION	02/2018	RRW
2.	30% SUBMISSION	02/2018	RRW
3.	60% DRAFT SUBMISSION	05/2018	RRW

CITY OF BARRIE
ACCEPTED

DATE:

.....
DIRECTOR OF ENGINEERING

McKAY ROAD IMPROVEMENTS

PLAN & PROFILE – McKAY ROAD
STA. 2+670 TO 2+970

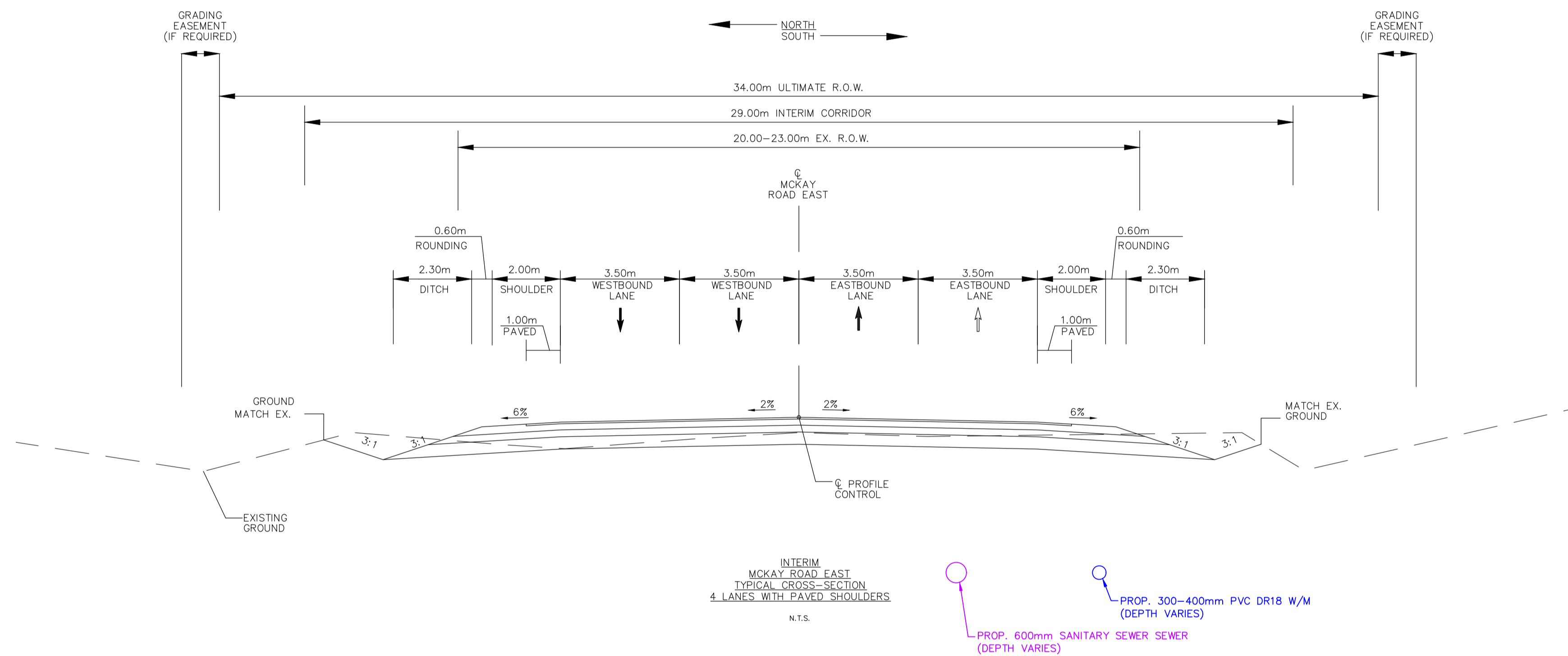
Barrie
ENGINEERING DEPARTMENT

SCALE HOR. 1:500 VERT. 1:100

DESIGN CFH DRAWN DTE
REVIEWED TFH DATE 2018.01.16

CONTRACT NO. 20--
SHEET NO. PP7

Printed by: 856679 on November 15, 2018 at 3:45:26pm
 File: V:\171321\Drawings\Public Information\Barrie\171321-0000-McKay-Interim (R1)04.dwg Layout: 897



Plotted by: 654677, on: November 13, 2018, at: 3:45:26pm
 File: V:\17121\Drawings\Public Information\Barrie\17121-00pm-McKay-Interim (RUC).dwg, Layout: D1

GENERAL NOTES
 REFER TO CURRENT CITY OF BARRIE STANDARDS
 FOR APPLICABLE GENERAL NOTES.

BENCH MARKS

NO.	REVISIONS	DATE	APPROVED
1.	30% DRAFT SUBMISSION	02/2018	RRW
2.	60% DRAFT SUBMISSION	05/2018	RRW

**CITY OF BARRIE
ACCEPTED**

DATE:

.....
DIRECTOR OF ENGINEERING

**McKAY ROAD
IMPROVEMENTS**

TYPICAL CROSS SECTIONS

Barrie
ENGINEERING DEPARTMENT

SCALE HOR.	1:100	VERT.	N/A	CONTRACT NO.	20-- --
DESIGN	CFH	DRAWN	DTE	SHEET NO.	D1
REVIEWED	TFH	DATE	2018.01.16		