

Tree #	No. of trees	Botanical Name	Common name	DBH (cm)	Height (m)	Crown Ø (m)	Maturity	Health condition	Action	
1	1	Quercus rubra	Red Oak	7	4	2	Immature	poor-fair	lower back injuries	Removed/Compensation
2	1	Quercus rubra	Red Oak	6.5	4	2	Immature	poor-fair	lower back injuries	Removed/Compensation
3	1	Quercus rubra	Red Oak	14	6	4	Immature	good		Transplanted
4	1	Quercus rubra	Red Oak	7	4	2	Immature	fair-poor	lower back injuries	Removed/Compensation
5	1	Albizia excelsior	White Fir	8	4	2	Immature	good		Transplanted
6	1	Albizia excelsior	White Fir	8	6	3	Immature	good		Preserved
7	1	Rubus pseudoacacia	Black Locust	17	6	4	Immature	good		Ecological offsetting
8	1	Acer negundo	Manitoba Maple	9x7	6	5	Immature	fair	malicious	Removed
9	1	Acer negundo	Manitoba Maple	7	3	2	Immature	fair		Removed
10	3	Picea canadensis	Colorado Blue Spruce	30,34,33	10	6	Mature	good	overhanging 1.2m on site	Preserved
11	1	Acer rubrum	Red maple	30	14	5	Mature	good	overhanging 1m on site	Preserved
12	1	Acer rubrum	Red maple	24	14	5	Mature	good	overhanging 2m on site	Preserved
13	1	Acer rubrum	Red maple	18	16	6	Immature	fair-poor	slight leaning, not affected	Preserved
14	1	Quercus rubra	Red Oak	12	8	5	Immature	good		Preserved
15	1	Ginkgo biloba	Maidenhair tree	22	12	6	Mature	good		Preserved
16	1	Ginkgo biloba	Maidenhair tree	18	12	6	Immature	good		Preserved
17	1	Ginkgo biloba	Maidenhair tree	18	12	6	Immature	good		Preserved
18	1	Ginkgo biloba	Maidenhair tree	15	12	6	Immature	good		Preserved
19	1	Albizia excelsior	White Fir	9.5	4	2	Immature	good		Preserved
20	1	Albizia excelsior	White Fir	10	7	3	Immature	good		Preserved
21	1	Albizia excelsior	White Fir	10	7	3	Immature	good		Preserved
22	2	Larix laricina	Tamarack	20,25	7	2.4	Mature	fair		Transplanted

TREE INVENTORY PLAN 1:300

ECOLOGICAL OFFSET REQUIRED FOR TREE #7: 1 X \$500= \$500
 COMPENSATION: - 3 TREES TO BE PLANTED ON THE LIBRARY LANDS. REFER TO L-1
 - 4 TREES TO BE TRANSPANTED AS SHOWN.

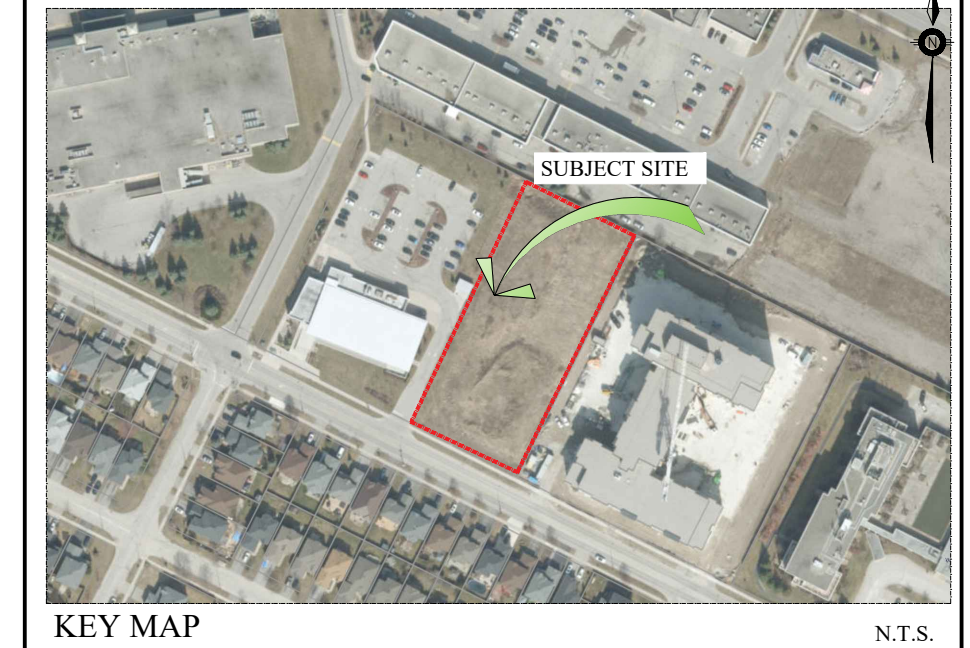
LETTER OF CONSENT PROVIDED FOR HURTING THE TREES #10, 11, 12

NOTE:
 - NO ENDANGERED SPECIES OF TREES HAVE BEEN IDENTIFIED ON SITE
 - EXISTING TREES ON SUBJECT SITE AND ADJACENT LIBRARY LANDS HAVE BEEN SURVEYED BY OLS. LOCATION OF THE TREES ON ADJACENT NORTH SITE HAVE BEEN TRIANGULATED.

LEGEND

- SUBJECT LANDS
- EXISTING BOUNDARY TREES TO BE PRESERVED
- EXISTING TREES TO BE TRANSPANTED. REFER TO LANDSCAPING PLAN.
- EXISTING TREES TO BE REMOVED
- OTHER TREES ON ADJACENT SITE NOT IMPACTED BY THE PROPOSED DEVELOPMENT
- TREE IDENTIFICATION NUMBER. REFER TO TREE LIST ON THIS PAGE
- EX. TREE STUMP TO BE REMOVED
- TREE PRESERVATION FENCE AS PER P1232 ON TP-2
- EX. BOARD FENCE

NOTE:
 LARGE TREES TO BE TRANSPANTED WITH 100" TREE SPADE TRUCK AVAILABLE AT BEECH NURSERY 5518 Hwy 9, Schomberg, ON, LOG 1T0



GENERAL NOTES

CONTRACTOR IS RESPONSIBLE FOR ALL LOCATES INCLUDING ALL UNDERGROUND SERVICES PRIOR TO ANY EXCAVATION OR INSTALLATIONS. THE CONTRACTOR IS REQUIRED TO NOTIFY THE VARIOUS UTILITY COMPANIES 48 HOURS PRIOR TO THE COMMENCEMENT OF ANY WORK.

ANY ACCOMPANYING DOCUMENTATION RELATING TO THE LANDSCAPE PLAN AND/OR PRESERVATION PLAN SUCH AS TENDER DOCUMENTS AND CHANGE NOTICES ARE TO BE ENDORSED BY "JDB" PRIOR TO THE BEGINNING OF ANY SITE WORKS. IN THE EVENT THAT A DISCREPANCY THE DRAWING SHALL BE ASSUMED CORRECT.

IT IS THE RESPONSIBILITY OF THE PERSON OR PERSONS RESPONSIBLE FOR THE CONSTRUCTED WORKS TO NOTIFY THE LANDSCAPE ARCHITECT WHEN PREPARED FOR ANY REQUIRED INSPECTIONS AND SIGN OFFS.

SCHEDULED MEETINGS SHALL TAKE PLACE AT THE CLOSEST MUTUALLY CONVENIENT TIME.

No.	REVISION	DATE	APRVD.
1.	SUBMISSION TO THE CITY OF BARRIE	March 7, 2025	SJT

ALL DRAWINGS AND SPECIFICATIONS ARE INSTRUMENTS OF SERVICE AND ARE THE PROPERTY OF "JDB". DRAWINGS ARE NOT TO BE MODIFIED AND/OR REPRODUCED WITHOUT THE WRITTEN CONSENT OF "JDB". REPRODUCTION OF DRAWINGS IN ANY FORM WITHOUT THE CONSENT OF "JDB" VOIDS THE DRAWING AT WHICH TIME "JDB" ACCEPTS NO LIABILITY FOR THE DRAWING CONTENT OR WORKS RESULTING FROM SAID REPRODUCTION. DRAWINGS MAY BE REPRODUCED BY MUNICIPAL AND GOVERNMENT AGENCIES RESPONSIBLE FOR APPROVALS FOR THEIR OWN USE. "JDB" RESERVES THE RIGHT TO WITHDRAW ANY DRAWING(S) FROM GOVERNMENT OR MUNICIPAL AGENCIES WHETHER APPROVED OR NOT IN THE EVENT THAT ACCOUNTS ARE NOT SETTLED OR REMAIN OUTSTANDING.

IT IS THE RESPONSIBILITY OF THE CONTRACTOR TO VERIFY ALL DIMENSIONS ON THE SITE AND REPORT ANY DISCREPANCIES OR VARIATIONS FROM THE SUPPLIED INFORMATION TO THE LANDSCAPE ARCHITECT WITH THE PROJECT. "JDB" IS NOT RESPONSIBLE FOR THE ACCURACY OF SURVEY, ARCHITECTURAL, MECHANICAL, ENGINEERING OR ELECTRICAL INFORMATION SHOWN ON THE DRAWING. FOR FURTHER INFORMATION REFER TO APPROPRIATE SURVEY, ARCHITECTURAL, MECHANICAL, ENGINEERING OR ELECTRICAL DRAWINGS PRIOR TO PROCEEDING WITH ANY WORKS.

THIS DRAWING IS NOT TO BE SCALED.

Client info:
 Hansen Group Inc.
 35 Worsley Street, Barrie, ON, L4M 1L7
 ph: 705-792-3883

BASE PLAN REVISED: January, 2025

ACCEPTED BY:

DATE:

LANDSCAPE ARCHITECTS STAMP

JDB Landscaping Inc.
 Urban Designers
 Landscape Architects

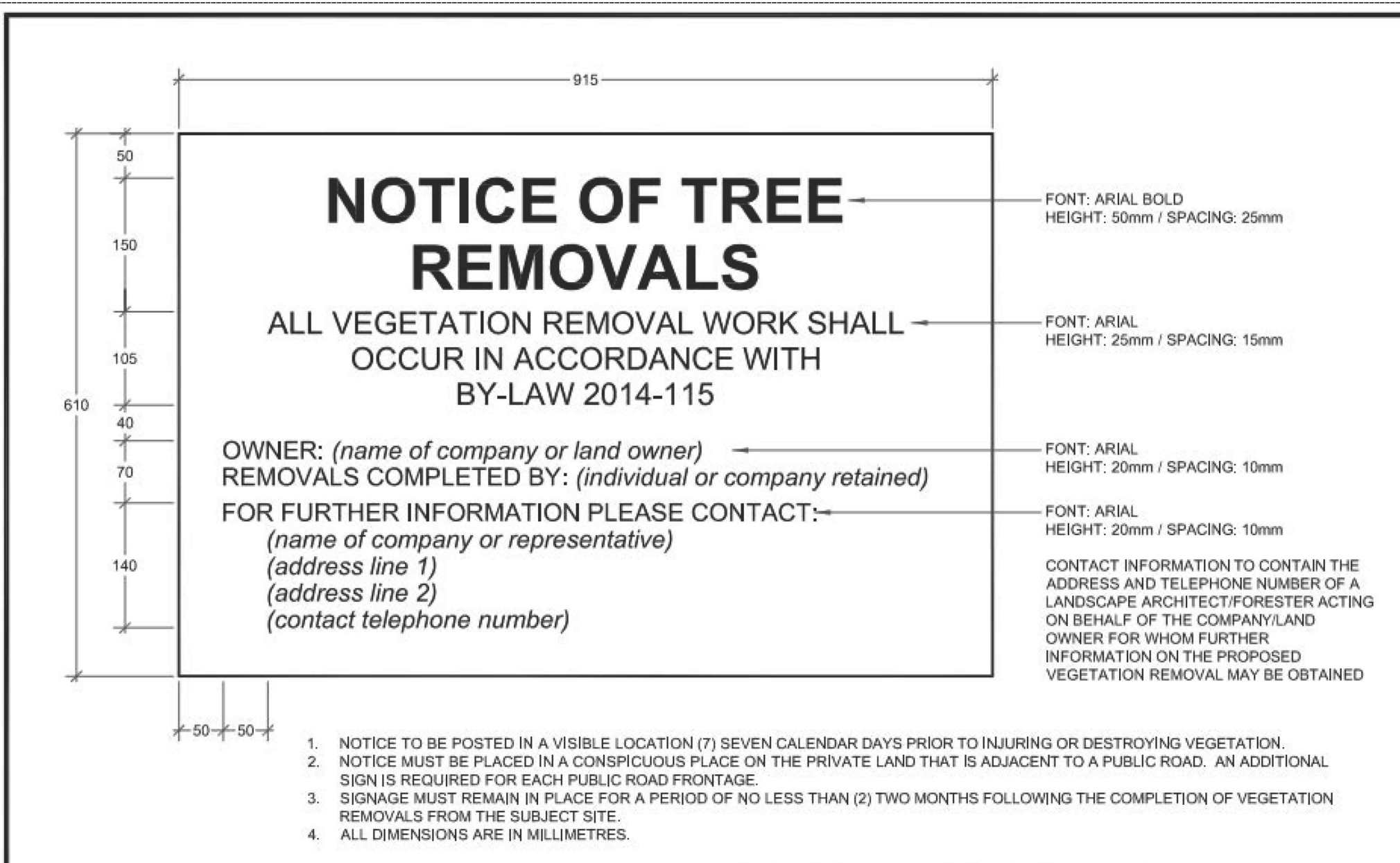
5-190 Minet's Point Rd. Suite #403
 Barrie, Ontario
 L4N 8J8 C: 705-816-0042

60 Dean Avenue
 BLOCK 132
 PART 2, PLAN 51R-10923
 City of Barrie

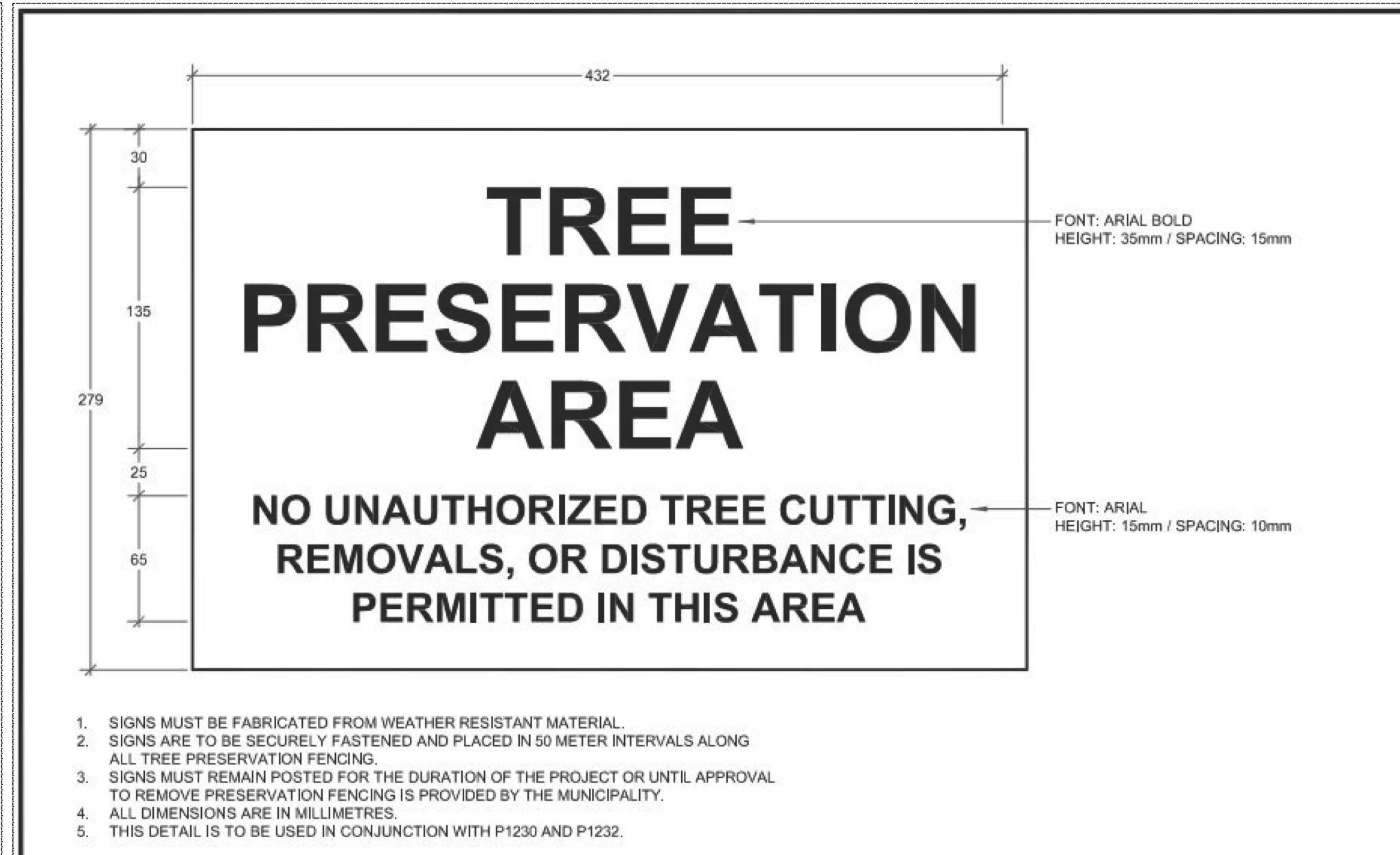
THE LIBRARY RESIDENCES

TREE INVENTORY/PRESERVATION PLAN

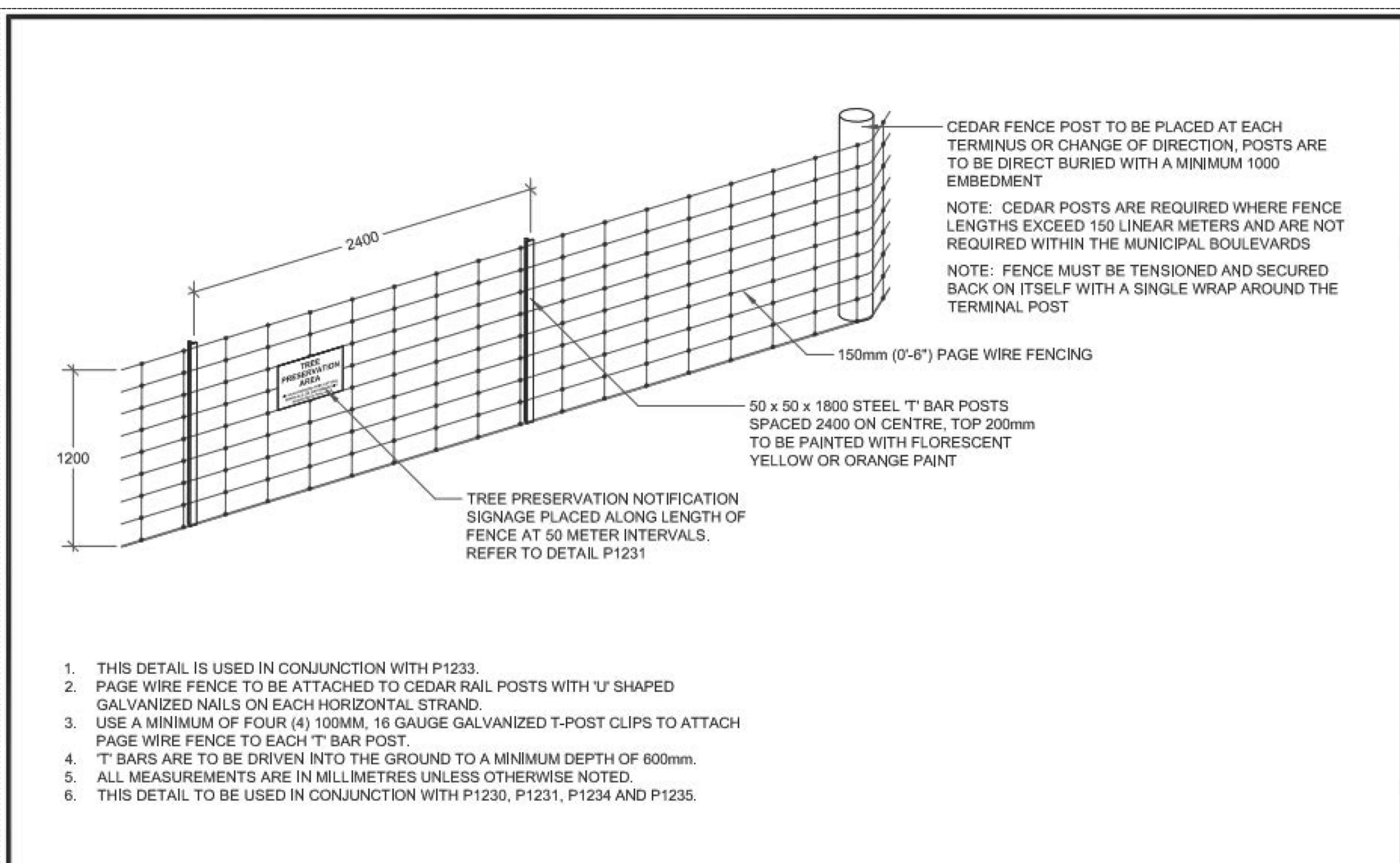
SCALE: 1/300	DESIGNED BY: SJT	REVIEWED BY: KS
MUNICIPAL FILE No.	OUR FILE REF. # 7-25	TP-1



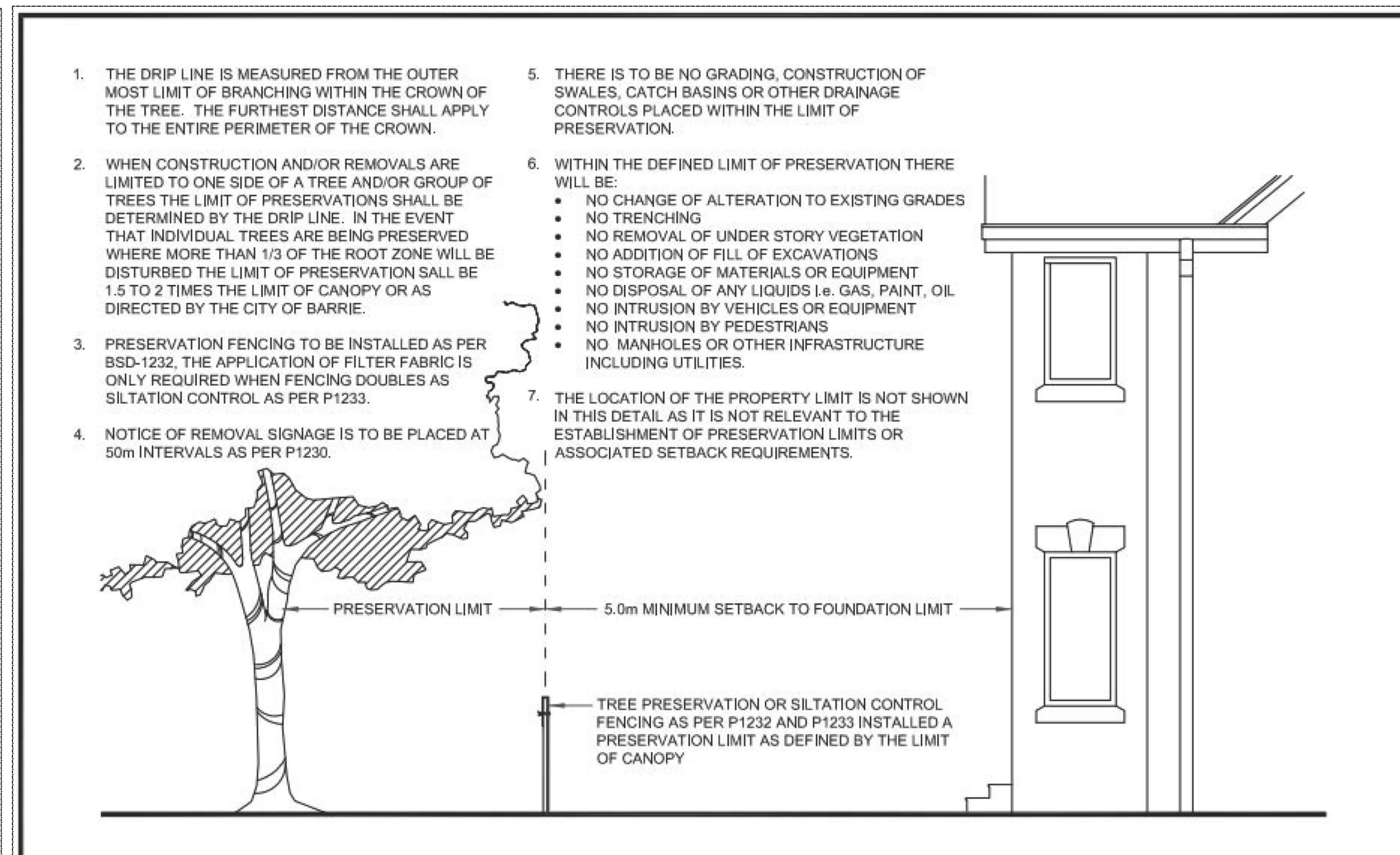
Barrie	SIGN TREE REMOVAL NOTIFICATION	REV No. 3	DATE: APR 2023
		SCALE: N.T.S.	
		P1230	



Barrie	SIGN TREE PRESERVATION AREA	REV No. 2	DATE: APR 2023
		SCALE: N.T.S.	
		P1231	



Barrie	FENCE TREE PRESERVATION	REV No. 2	DATE: APR 2023
		SCALE: N.T.S.	
		P1232	



Barrie	TREE PRESERVATION LIMIT DEVELOPMENT APPROVALS	REV No. 2	DATE: APR 2023
		SCALE: N.T.S.	
		P1235	

THE INTENT OF TREE PRESERVATION AND PROTECTION IS TO PROVIDE AN INVENTORY OF EXISTING TREES ON SITE. IT IS NOT A SURVEY AND THEREFORE THE EXACT LOCATION OF EXISTING TREES MUST BE VERIFIED ON SITE PRIOR TO THE COMMENCEMENT OF ANY CONSTRUCTION WORKS.

ALL TREES TO BE PRESERVED SHALL BE INDICATED AND MARKED AS SUCH ON SITE BY THE LANDSCAPE ARCHITECT PRIOR TO THE COMMENCING OF THE CLEARING AND GRUBBING CONTRACT.

AS PART OF THE CLEARING AND GRUBBING CONTRACTUAL WORK, TREES LOCATED AT THE EDGES OF ALL PRESERVATION AREAS REGARDLESS OF SIZE ARE TO BE PRUNED OF DEAD AND DISEASED LIMBS AND INDIVIDUAL SPECIMENS AND ARE TO BE REMOVED IN ACCORDANCE WITH ACCEPTED HORTICULTURAL PRACTICES AND TO THE SATISFACTION OF THE MUNICIPALITY UNDER THE DIRECT SUPERVISION OF THE LANDSCAPE ARCHITECT.

IN THE EVENT THAT A TREE THAT HAS BEEN DESIGNATED FOR PRESERVATION IS DAMAGED OR REMOVED WITHOUT PRIOR WRITTEN PERMISSION FROM THE LANDSCAPE ARCHITECT AND MUNICIPALITY, THE LAND OWNER SHALL BE RESPONSIBLE FOR THE REMOVAL AND OR DAMAGE.

SPECIFICATIONS FOR PRESERVATION & PROTECTION

PRIOR TO THE COMMENCEMENT OF ANY CONSTRUCTION WORKS, ALL TREES OR BLOCKS OF TREES THAT HAVE BEEN DESIGNATED FOR PRESERVATION, AS INDICATED ON THE ACCOMPANYING PLAN SHALL BE FULLY PROTECTED BY THE ERECTION OF HOARDING OUTSIDE OF OR AT THE DRIP LINE.

EQUIPMENT OR VEHICLES SHALL NOT BE PARKED, REPAIRED OR REFUELED WITHIN TREE PROTECTION ZONE, CONSTRUCTION MATERIALS SHALL NOT BE STORED AND EARTH MATERIALS SHALL NOT BE STOCKPILED WITHIN THE DRIP LINE AREA OF ANY TREE NOT DESIGNATED FOR REMOVAL.

ANY TREES NOT DESIGNATED FOR REMOVAL SHALL NOT HAVE RIGGING CABLES ATTACHED OR WRAPPED AROUND THEM. NOR SHALL ANY CONTAMINANTS BE DUMPED WITHIN THE PROTECTIVE AREAS. FURTHER, NO CONTAMINANTS SHALL BE DUMPED OR FLUSHED WHERE THEY MAY COME INTO CONTACT WITH THE FEEDER ROOTS OF THE TREES TO BE PRESERVED.

THE CONTRACTOR OR LAND OWNER SHALL TAKE EVERY PRECAUTION TO PREVENT DAMAGE TO TREES OR SHRUBS THAT ARE NOT DESIGNATED FOR REMOVAL AS PER THE ACCOMPANYING PLAN.

UNLESS THE CONTRACT WORK SPECIFICALLY REQUIRES WORK WITHIN THE DRIP LINE OF TREES NOT DESIGNATED FOR REMOVAL, EQUIPMENT SHALL NOT BE OPERATED WITHIN THAT DRIP LINE AREA. WHEN CONTRACT WORK MUST BE COMPLETED WITHIN THE DRIP LINE OF TREES NOT DESIGNATED FOR REMOVAL, OPERATION OF EQUIPMENT WITHIN THAT DRIP LINE SHALL BE KEPT TO THE MINIMUM AMOUNT REQUIRED TO COMPLETE THE WORKS. PRIOR TO THE COMMENCEMENT OF SUCH WORKS THE LANDSCAPE ARCHITECT AND MUNICIPALITY MUST BE GIVEN WRITTEN NOTIFICATION AND WILL SUBSEQUENTLY BE REQUIRED TO INSPECT SAID WORKS.

THE CONTRACTOR'S OPERATION SHALL IN NO WAY CAUSE DAMAGE TO THE TRUNK OR BRANCHES OF TREES NOT DESIGNATED FOR REMOVAL.

THE CONTRACTOR'S OPERATION SHALL NOT CAUSE FLOODING OR SEDIMENT DEPOSITS IN AREAS WHERE TREES ARE NOT DESIGNATED FOR REMOVAL.

IN THE EVENT THAT IT IS NECESSARY TO REMOVE LIMBS OR PORTIONS OF TREES NOT DESIGNATED FOR REMOVAL, WRITTEN APPROVAL AND DIRECTION MUST BE GIVEN BY THE LANDSCAPE ARCHITECT AND MUNICIPALITY PRIOR TO ANY WORKS. THE REMOVALS MUST BE EXECUTED CAREFULLY AND IN ACCORDANCE WITH STANDARD HORTICULTURAL PRACTICES AND TECHNIQUES.

IN THE EVENT THAT GRADES AROUND A TREE DESIGNATED FOR PRESERVATION ARE TO BE CHANGED, THE DEVELOPER, AGENT OR LAND OWNER SHALL BE REQUIRED TO TAKE PRECAUTIONS TO PRESERVE THE TREE, SUCH AS DRY WELING AND ROOT FEEDING. THE PROTECTION MEASURES MUST BE DONE TO THE SATISFACTION OF THE LANDSCAPE ARCHITECT AND MUNICIPALITY.

THE DEVELOPER SHALL BE RESPONSIBLE FOR THE MAINTENANCE AND/OR REMOVAL OF DEAD, DYING, DISEASED TREES WITHIN THE LIMIT OF THIS PLAN UNTIL END OF GENERAL MAINTENANCE.

NOTES FOR TREE PRESERVATION AND PROTECTION

NOTE:
NO TREE CUTTING SHALL OCCUR BETWEEN APRIL 1ST AND OCTOBER 31ST UNLESS CLEARANCE FROM M.N.R. AND M.E.C.P. IS PROVIDED.

1. PROTECTION AREA IS INITIALLY IDENTIFIED IN THE FIELD BY A LICENSED ONTARIO SURVEYOR. THIS LINE APPROXIMATELY ESTABLISHES THE LIMITS OF TREE PRESERVATION SUBJECT TO AN ON-SITE MEETING WITH MUNICIPALITY PARKS PLANNING STAFF AND THE LANDSCAPE ARCHITECT/ARBORIST.

2. THE LANDSCAPE ARCHITECT/ARBORIST AND THE MUNICIPALITY PARKS PLANNING STAFF MEET TO REVIEW THE SURVEYED LINE PRIOR TO ANY TREE REMOVAL OCCURRING, AND TO ADJUST THE LINE WHERE APPROPRIATE TO REFLECT THE ACTUAL NATURE OF A TREAED AREA AS OPPOSED TO A STRAIGHT CUT LINE.

3. TREES THAT ARE SUSCEPTIBLE TO FALLING ONTO PRIVATE PROPERTY OR MUNICIPAL PROPERTY FROM WITHIN THE TREE PRESERVATION ZONE WILL BE IDENTIFIED FOR REMOVAL. REMOVAL WILL TAKE PLACE AS PRESCRIBED IN ITEM #6 BELOW.

4. ONCE THE SITE VISIT HAS CONCLUDED, THEN TREE PRESERVATION FENCING WILL BE ERECTED ALONG THE AGREED TREE PRESERVATION LINE.

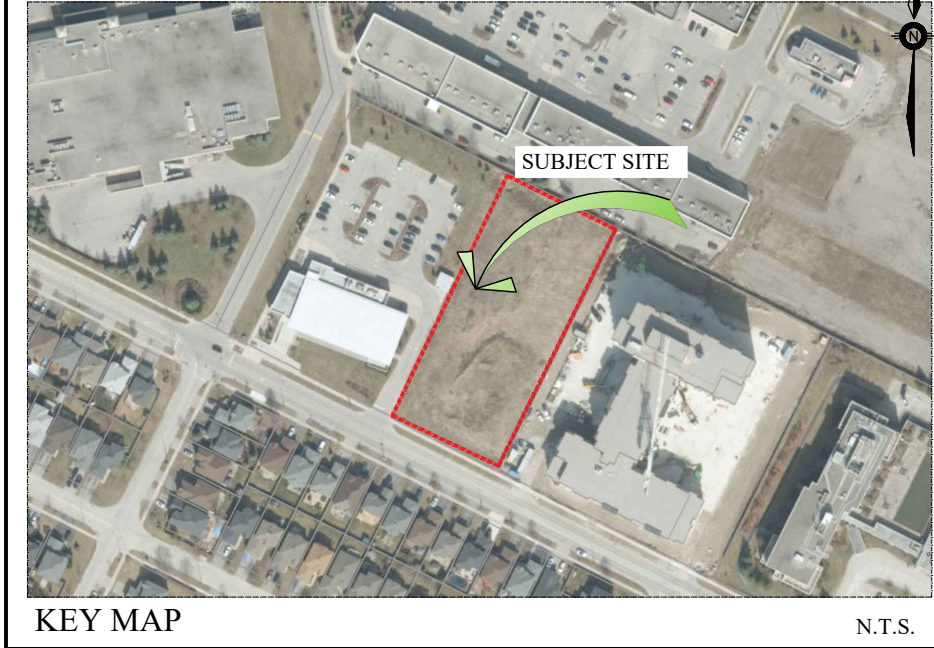
5. FULL TREE REMOVAL OUTSIDE OF THE TREAED AREAS MAY OCCUR ONCE THE PRESERVATION FENCING HAS BEEN ERECTED, TREE REMOVAL PERMIT ISSUED, AND SIGNAGE POSTED A MINIMUM OF 7 DAYS PRIOR TO COMMENCING TREE REMOVAL ACTIVITIES ON SITE.

6. TREES ARE TO BE FELLED IN SUCH A MANNER AS TO NOT DISTURB VEGETATION TO REMAIN. NO MACHINERY OR EQUIPMENT SHALL BE OPERATED OR STORED WITHIN THE DRIPLINE OF PROTECTED TREES.

7. STUMP REMOVALS ARE TO BE IMPLEMENTED AS TO NOT TO DISTURB THE GROUND WITHIN THE TREE PRESERVATION ZONE.

8. ONCE TREE REMOVAL HAS OCCURRED, AND PRIOR TO THE ISSUANCE OF THE UNDERGROUND CERTIFICATE, A RE-INSPECTION OF THE TREE PRESERVATION AREAS MUST OCCUR WITH MUNICIPALITY STAFF AND THE LANDSCAPE ARCHITECT/ARBORIST. ANY ADDITIONAL TREES TO BE REMOVED WILL BE NOTED BY THE MUNICIPALITY PARKS PLANNING STAFF AND LANDSCAPE ARCHITECT/ ARBORIST.

9. ALL TREES ON ADJACENT PRIVATE LAND SHALL RECEIVE DRIPLINE PROTECTION.



GENERAL NOTES

CONTRACTOR IS RESPONSIBLE FOR ALL LOCATES INCLUDING ALL UNDERGROUND SERVICES PRIOR TO ANY EXCAVATION OR INSTALLATIONS. THE CONTRACTOR IS REQUIRED TO NOTIFY THE VARIOUS UTILITY COMPANIES 48 HOURS PRIOR TO THE COMMENCEMENT OF ANY WORK.

ANY ACCOMPANYING DOCUMENTATION RELATING TO THE LANDSCAPE PLAN AND/OR PRESERVATION PLAN SUCH AS TENDER DOCUMENTS AND CHANGE NOTICES ARE TO BE ENDORSED BY "JDB" PRIOR TO THE BEGINNING OF ANY SITE WORKS. IN THE EVENT THAT OF A DISCREPANCY THE DRAWING SHALL BE ASSUMED CORRECT.

IT IS THE RESPONSIBILITY OF THE PERSON OR PERSONS RESPONSIBLE FOR THE CONSTRUCTED WORKS TO NOTIFY THE LANDSCAPE ARCHITECT WHEN PREPARED FOR ANY REQUIRED INSPECTIONS AND SIGN OFFS.

SCHEDULED MEETINGS SHALL TAKE PLACE AT THE CLOSEST MUTUALLY CONVENIENT TIME.

No.	REVISION	DATE	APRVD.
1.	SUBMISSION TO THE CITY OF BARRIE	March 7, 2023	SIT

ALL DRAWINGS AND SPECIFICATIONS ARE INSTRUMENTS OF SERVICE AND ARE THE PROPERTY OF "JDB". DRAWINGS ARE NOT TO BE MODIFIED AND/OR REPRODUCED WITHOUT THE WRITTEN CONSENT OF "JDB". REPRODUCTION OF DRAWINGS IN ANY FORM WITHOUT THE CONSENT OF "JDB" VOIDS THE DRAWING AT WHICH TIME "JDB" ACCEPTS NO LIABILITY FOR THE DRAWING CONTENT OR WORKS RESULTING FROM SAID REPRODUCTION. DRAWINGS MAY BE REPRODUCED BY MUNICIPAL AND GOVERNMENT AGENCIES RESPONSIBLE FOR APPROVALS FOR THEIR OWN USE. "JDB" RESERVES THE RIGHT TO WITHDRAW ANY DRAWING(S) FROM GOVERNMENT OR MUNICIPAL AGENCIES WHETHER APPROVED OR NOT IN THE EVENT THAT ACCOUNTS ARE NOT SETTLED OR REMAIN OUTSTANDING.

IT IS THE RESPONSIBILITY OF THE CONTRACTOR TO VERIFY ALL DIMENSIONS ON THE SITE AND REPORT ANY DISCREPANCIES OR VARIATIONS FROM THE SUPPLIED INFORMATION TO THE LANDSCAPE ARCHITECT WITH THE PROJECT. "JDB" IS NOT RESPONSIBLE FOR THE ACCURACY OF SURVEY, ARCHITECTURAL, MECHANICAL, ENGINEERING OR ELECTRICAL INFORMATION SHOWN ON THE DRAWING. FOR FURTHER INFORMATION REFER TO APPROPRIATE SURVEY, ARCHITECTURAL, MECHANICAL, ENGINEERING OR ELECTRICAL DRAWINGS PRIOR TO PROCEEDING WITH ANY WORKS.

THIS DRAWING IS NOT TO BE SCALED.

Client info:
Hansen Group Inc.
35 Wexley Street, Barrie, ON, L4M 1L7
ph 705-792-3883

BASE PLAN REVISED: January, 2025

ACCEPTED BY: _____
DATE: _____

LANDSCAPE ARCHITECT'S STAMP
DATE: _____

JDB Landscaping Inc.
Urban Designers
Landscape Architects

5-190 Minnet's Point Rd. Suite #403
Barrie, Ontario
L4N 8J8 C: 705-816-0042

60 Dean Avenue
BLOCK 132
PART 2, PLAN 51R-10923
City of Barrie

THE LIBRARY RESIDENCES

TREE PRESERVATION DETAILS

SCALE: NTS	DESIGNED BY: SIT	REVIEWED BY: KS
MUNICIPAL FILE No.	OUR FILE REF. # 7-23	TP-2

Plant material density					
area	ratio			minimum	proposed
6670	200	deciduous	60mm	33	33
sq.m	400	conifers	2m	17	17
	100	shrubs	0.6-1.2m	67	56
	200	evergreens	0.45spr/1.2m ht	33	44

CODE	QNTY	COMMON NAME	BOTANICAL NAME	SIZE	FORM	SPACING	DETAIL	NOTES
------	------	-------------	----------------	------	------	---------	--------	-------

DECIDUOUS TREES

Af	5	AUTUMN BLAZE MAPLE	Acer x freemanii 'Jeffersred'	60 mm	W.B.	9.0 m o/c	P1310	Full Form
Agr	1	PAPERBARK MAPLE	Acer griseum	60 mm	W.B.	6.0 m o/c	P1310	Full Form
Ar	1	RED SUNSET MAPLE	Acer rubrum 'Franksred'	60 mm	W.B.	9.0 m o/c	P1310	Full Form
AsE	2	ENDOWMENT SUGAR MAPLE	Acer saccharum 'Endowment'	60 mm	W.B.	6.0 m o/c	P1310	Full Form
Gb	4	MAIDENHAIR TREE	Ginkgo biloba	60 mm	W.B.	9.0 m o/c	P1310	Full Form
Gt	5	IMPCOLE HONEYLOCUST	Gleditsia triacanthos var. inermis 'Imperial'	60 mm	W.B.	9.0 m o/c	P1310	Full Form
MxS	1	ALEXANDRINA MAGNOLIA	Magnolia x soulangiana 'Alexandrina'	200 cm	w.b.	as shown	P1310	Full Form
PsK	6	KWANZAN FLOWERING CHERRY	Prunus serrulata 'Kwanzan'	60 mm	W.B.	6.0 m o/c	P1310	Full Form
Tc	12	CORINTHIAN LINDEN	Tilia cordata 'Corzam'	60 mm	W.B.	5.0 m o/c	P1310	Full Form
Tis	1	STERLING SILVER LINDEN	Tilia tomentosa 'Sterling Silver'	60 mm	W.B.	9.0 m o/c	P1310	Full Form

CONIFEROUS TREES

Cup	1	WEeping FALSE CYPRESS	Chamaecyparis nootkatensis 'Pendula'	200cm	w.b.	As Per Drawing P1312		Full form / Do not cut leader
Po	5	SERBIAN SPRUCE	Picea omorika	200cm	w.b.	As Per Drawing P1312		Full form / Do not cut leader
PpG	11	COLORADO BLUE SPRUCE	Picea pungens 'Glauca'	200cm	w.b.	As Per Drawing P1312		Full form / Do not cut leader

DECIDUOUS SHRUBS

Bt	13	ROSE GLOW BARBERRY	Berberis thunbergii 'Rose Glow'	60 cm	3 gal	0.80 m o/c	P1314	Full form / Container grown
EaC	15	DWARF WINGED BURNING BUSH	Euonymus alatus 'Compactus'	60 cm	3 gal	1.60 m o/c	P1314	Full form / Container grown
Ms	4	SUSAN MAGNOLIA	Magnolia x 'Susan'	60 cm	3 gal	2.5m o/c	P1314	Full form / Container grown
Rr	9	NEARLY WILD ROSE	Rosa rugosa 'Nearly Wild'	60 cm	3 gal	0.90m o/c	P1314	Full form / Container grown
Smp	4	DWARF KOREAN LILAC	Syringa meyeri 'Palibin'	60 cm	3 gal	1.2m o/c	P1314	Full form / Container grown
Sa	2	SNOW WHITE SPIRAEA	Spiraea x vanhouttei 'Snow White'	60 cm	3 gal	1.5m o/c	P1314	Full form / Container grown
SvS	8	SNOW WHITE SPIRAEA	Spiraea x vanhouttei 'Snow White'	60 cm	3 gal	1.5m o/c	P1314	Full form / Container grown
Yf	1	ADAM'S NEEDLE	Yucca filamentosa	50cm	3 gal.	0.60 m o/c	P1314	Full form / Container grown

SPREADING EVERGREENS

JhB	1	BLUE CHIP JUNIPER	Juniperus horizontalis 'Blue Chip'	50cm	3 gal	0.90 m o/c	P1314	Full form / Container grown
JhW	3	BLUE RUG JUNIPER	Juniperus horizontalis 'Wiltoni'	50cm	3 gal.	0.90 m o/c	P1314	Full form / Container grown
Pmp	3	SLOWMOUND PINE	Pinus mugo 'Slowmound'	60cm	7 gal.	1.50 m o/c	P1314	Full form / Container grown
Md	6	SIBERIAN CARPET CYPRESS	Microbiota decussata	20cm	3 gal.	1.00 m o/c	P1314	Full form / Container grown

UPRIGHT EVERGREENS

JsM	11	MOFFET JUNIPER	Juniperus scopulorum 'Moffetti'	150cm	w.b.	1.20 m o/c	P1314	Full form / Container grown
JvT	4	TAYLOR EASTERN RED CEDAR	Juniperus virginiana 'Taylor'	200cm	w.b.	1.20 m o/c	P1314	Full form / Container grown
TmH	14	HICK'S YEW	Taxus media 'Hicksii'	50cm	3 gal	0.45m o/c	P1314	Clipped hedge at 1.5m ht
TcC	2	CLIPPED PYRAMIDAL JAPANESE YEW	Taxus cuspidata 'Capitata'	50cm	3 gal	1.8m o/c	P1314	Full form / Container grown

ORNAMENTAL GRASSES

FgE	94	ELIJAH'S BLUE FESCUE	Festuca glauca 'Elijah Blue'	1 gal	pot	0.30 m o/c	n/a	Full form / Container grown
CaA	11	VARIEGATED FEATHER REED GRASS	Calamagrostis arundinacea 'Avalanche'	1 gal	pot	0.60 m o/c	n/a	Full form / Container grown

LIBRARY COMPENSATION PLANTING PLAN

Qr	3	RED OAK	Quercus rubra	60 mm	W.B.	9.0 m o/c	P1310	Spring planting/ Soil pH<7.5
Ac*	1	WHITE FIR	Abies concolor		transplant			
Ll*	2	AMERICAN LARCH	Larix laricina		transplant			
Qr*	1	RED OAK	Quercus rubra		transplant			

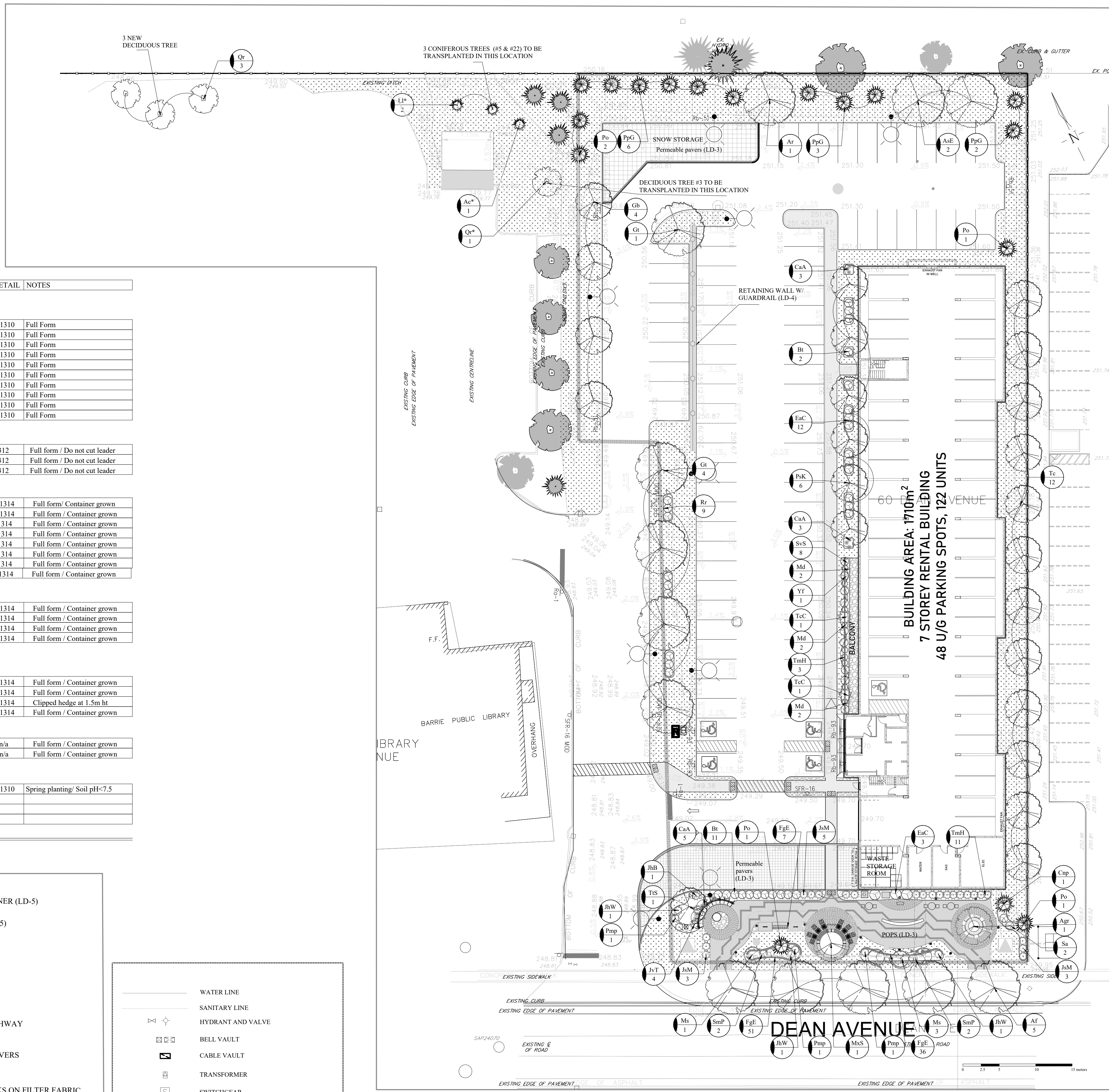
PLANT LIST

REFER TO NOTES AND DETAILS ON LD-2

	SUBJECT LANDS		TRASH CONTAINER (LD-5)
	NEW DECIDUOUS TREES ON SUBJECT SITE		BIKE RACK (LD-5)
	NEW CONIFEROUS TREES ON SUBJECT SITE		SOD
	EXISTING BOUNDARY TREES TO BE PRESERVED		UNIT PAVERS
	OTHER TREES ON ADJACENT SITE NOT IMPACTED BY THE PROPOSED DEVELOPMENT		CONCRETE PATHWAY
	LOCATION OF EX. TREES TO BE TRANSPLANTED OR NEW TREES TO BE PLANTED ON THE LIBRARY LANDS		PERMEABLE PAVERS
	SHRUBS (LP-2)		2" PEBBLE ROCKS ON FILTER FABRIC
	ORNAMENTAL GRASSES		LIGHTS (REFER TO ELECTRICAL PLAN)
	COMMERCIAL PLASTIC PLANT BED EDGE, MIN 6" DEEP		LIGHT BOLLARDS (Lighting plan)
			EX. BOARD FENCE

	WATER LINE
	SANITARY LINE
	HYDRANT AND VALVE
	BELL VAULT
	CABLE VAULT
	TRANSFORMER
	SWITCHGEAR
	LIGHT STANDARD
	LIGHT STANDARD PEDESTAL
	COMMUNITY MAILBOX
	STOP SIGN, REFER TO ENGINEERING PLANS

BASE INFO/ UTILITIES LEGEND (REFER TO ENGINEERING DRAWINGS)



LANDSCAPE PLAN

SCALE 1:300



GENERAL NOTES

CONTRACTOR IS RESPONSIBLE FOR ALL LOCATES INCLUDING ALL UNDERGROUND SERVICES PRIOR TO ANY EXCAVATION OR INSTALLATIONS. THE CONTRACTOR IS REQUIRED TO NOTIFY THE VARIOUS UTILITY COMPANIES 48 HOURS PRIOR TO THE COMMENCEMENT OF ANY WORK.

ANY ACCOMPANYING DOCUMENTATION RELATING TO THE LANDSCAPE PLAN AND/OR PRESERVATION PLAN SUCH AS TENDER DOCUMENTS AND CHANGE NOTICES ARE TO BE ENDORSED BY "JDB" PRIOR TO THE BEGINNING OF ANY SITE WORKS. IN THE EVENT THAT OF A DISCREPANCY THE DRAWING SHALL BE ASSUMED CORRECT.

IT IS THE RESPONSIBILITY OF THE PERSON OR PERSONS RESPONSIBLE FOR THE CONSTRUCTION WORKS TO NOTIFY THE LANDSCAPE ARCHITECT WHEN PREPARED FOR ANY REQUIRED INSPECTIONS AND SIGN OFFS.

SCHEDULED MEETINGS SHALL TAKE PLACE AT THE CLOSEST MUTUALLY CONVENIENT TIME.

No.	REVISION	DATE	APRVD.
1.	SUBMISSION TO THE CITY OF BARRE	March 7, 2025	SJT

ALL DRAWINGS AND SPECIFICATIONS ARE INSTRUMENTS OF SERVICE AND ARE THE PROPERTY OF "JDB". DRAWINGS ARE NOT TO BE MODIFIED AND/OR REPRODUCED WITHOUT THE WRITTEN CONSENT OF "JDB". REPRODUCTION OF DRAWINGS IN ANY FORM WITHOUT THE CONSENT OF "JDB" VOIDS THE DRAWING AT WHICH TIME "JDB" ACCEPTS NO LIABILITY FOR THE DRAWING CONTENT OR WORKS RESULTING FROM SAID REPRODUCTION. DRAWINGS MAY BE REPRODUCED BY MUNICIPAL AND GOVERNMENT AGENCIES RESPONSIBLE FOR APPROVALS FOR THEIR OWN USE.

"JDB" RESERVES THE RIGHT TO WITHDRAW ANY DRAWINGS FROM GOVERNMENT OR MUNICIPAL AGENCIES WHETHER APPROVED OR NOT IN THE EVENT THAT ACCOUNTS ARE NOT SETTLED OR REMAIN OUTSTANDING.

IT IS THE RESPONSIBILITY OF THE CONTRACTOR TO VERIFY ALL DIMENSIONS ON THE SITE AND REPORT ANY DISCREPANCIES OR VARIATIONS FROM THE SUPPLIED INFORMATION TO THE LANDSCAPE ARCHITECT WITH THE PROJECT. "JDB" IS NOT RESPONSIBLE FOR THE ACCURACY OF SURVEY, ARCHITECTURAL, MECHANICAL, ENGINEERING OR ELECTRICAL INFORMATION SHOWN ON THE DRAWING. FOR FURTHER INFORMATION REFER TO APPROPRIATE SURVEY, ARCHITECTURAL, MECHANICAL, ENGINEERING OR ELECTRICAL DRAWINGS PRIOR TO PROCEEDING WITH ANY WORKS.

THIS DRAWING IS NOT TO BE SCALE.

Client info:
Hansen Group Inc.
35 Worsley Street, Barrie, ON, L4M 1L7
ph 705-792-3883

BASE PLAN REVISED: January, 2025

ACCEPTED BY:

DATE:

LANDSCAPE ARCHITECTS STAMP
SEAL AND SIGNATURE VOID IF REPRODUCED

JDB Landscaping Inc.
Urban Designers
Landscape Architects
5-190 Mine's Point Rd. Suite #403
Barrie, Ontario
L4N 8J8
C: 705-816-0042

60 Dean Avenue
BLOCK 132
PART 2, PLAN 51R - 10923
City of Barrie
THE LIBRARY RESIDENCES

LANDSCAPE PLAN

SCALE: 1:300	DESIGNED BY: SJT	REVIEWED BY: KS
MUNICIPAL FILE No.	OUR FILE REF. # 7-25	L-1

SITE CONDITIONS

- VERIFY ALL EXISTING SITE CONDITIONS AND REPORT ANY DISCREPANCIES BEFORE COMMENCING WORK.
- THE CONTRACTOR SHALL VERIFY THE LOCATION OF ALL UTILITIES AND IS RESPONSIBLE FOR ANY DAMAGE TO SERVICES, EXISTING VEGETATION OR ANY OTHER FEATURES TO BE RETAINED.
- FOR ALL AREAS OF DISTURBANCE: NATIVE TOPSOIL IS TO BE STRIPPED, STOCK PILED, LABORATORY TESTED AND REPLACED AS PER TOPSOIL REQUIREMENTS.
- ENSURE THAT ALL PLANTING EQUIPMENT ARE CLEAN AND FREE OF INVASIVE SPECIES (E.G. PHRAGMITES) BEFORE ENTERING THE SUBJECT PROPERTY.

PLANT MATERIAL REQUIREMENTS

- PLANT MATERIAL LISTED IN THE PLANT SCHEDULE ARE MINIMUM SIZES +/- NURSERY GROWN AND UNIFORM SPECIMENS. NO SUBSTITUTIONS WILL BE PERMITTED WITHOUT WRITTEN APPROVAL FROM THE LANDSCAPE ARCHITECTS.
- DECIDUOUS TREES SHALL HAVE A STRAIGHT CENTRAL LEADER AND WELL BRANCHED 1.5M ABOVE GRADE UNLESS OTHERWISE STATED.
- CONIFEROUS TREES SHALL HAVE A STRAIGHT CENTRAL LEADER AND DENSELY BRANCHED TO WITHIN 0.3m OF THE GROUND.
- ALL PLANTING MATERIAL AND OPERATIONS TO MEET OR EXCEED THE HORTICULTURAL STANDARDS OF THE CANADIAN NURSERY LANDSCAPE ASSOCIATION AND THE HORTICULTURAL TRADES ASSOCIATION. ALL PLANT MATERIAL TO BE NO.1 GRADE NURSERY STOCK. UNSATISFACTORY STOCK WILL BE REFUSED ON THE SITE.
- SOD TO BE CANADA NO.1 NURSERY SOD, MEETING ONTARIO SOD GROWERS ASSOCIATION STANDARDS. ALL SOD AREAS TO RECEIVE 200MM DEPTH OF TOPSOIL UNLESS OTHERWISE INDICATED.

PLANTING NOTES

- LOCATIONS FOR PLANT MATERIAL AND PLANTING BEDS ARE TO BE MARKED OR STAKED OUT BY THE CONTRACTOR AND APPROVED BY THE LANDSCAPE ARCHITECT AND MUNICIPAL STAFF PRIOR TO INSTALLATION.
- ALL PLANT MATERIAL WHICH ARE SPECIFIED BY O.C. (ON CENTER SPACING) ARE TO BE PLANTED AS NOTED IN THE PLANT SCHEDULE.
- IN THE EVENT OF A DISCREPANCY BETWEEN THE PLANT LIST AND DRAWING, THE DRAWING WILL BE ASSUMED TO BE CORRECT.
- ALL MASS PLANTINGS OF SHRUBS SHALL BE IN CONTINUOUS BEDS AND MULCHED AS SPECIFIED.
- ALL TREE PITS SHALL INCLUDE TREATMENT WITH MYCORRHIZAL FUNGI OF THE WALLS BEFORE PLANTING (2L OF "MIKE" OR SIMILAR PRODUCT SHALL BE USED FOR EACH 60MM CALIPER TREE)
- ALL TREES ARE TO BE STAKED OR GUY WIRED ACCORDING TO DETAILS PROVIDED. NO ACCESSIBLE OPEN HOLE TREE PITS SHALL BE PERMITTED OVERNIGHT.
- REMOVE BURLAP AND ROPE FROM THE TOP 1/3 OF ROOT BALLS.
- WATER AT TIME OF PLANTING AND WHENEVER DEEMED NECESSARY TO MAINTAIN THE TREES IN A HEALTHY CONDITION.
- ALL PLANT MATERIALS WHICH CAN NOT BE PLANTED IMMEDIATELY UPON ARRIVAL ON SITE SHALL BE PROPERLY HEeled IN OR WELL PROTECTED WITH SOIL OR SIMILAR MATERIALS TO PREVENT DRYING OUT AND SHALL BE KEPT MOIST UNTIL COMMENCEMENT OF PLANTING.
- NO ACCESSIBLE OPEN HOLE TREE PITS SHALL BE PERMITTED OVERNIGHT. ALL OPEN PITS SHALL BE ADEQUATELY PROTECTED BY BARRIERS OR FILLED IN WITH SOIL PRIOR TO THE END OF EACH PLANTING DAY.
- ALL NEW WORK TO BLEND NEATLY AND SMOOTHLY WITH EXISTING CONDITIONS.

INSPECTION AND WARRANTY

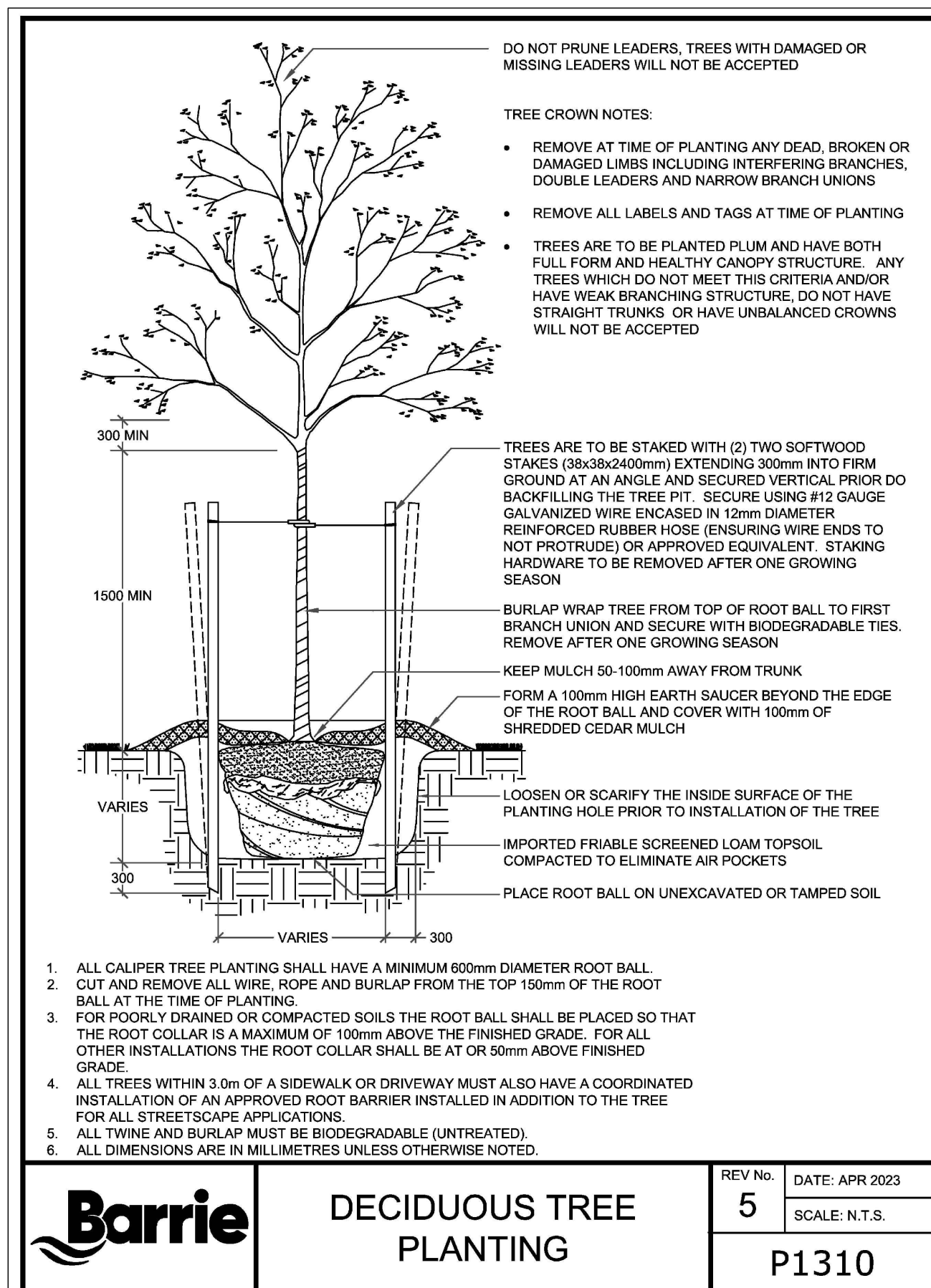
- GIVE TIMELY NOTICE TO THE LANDSCAPE ARCHITECT FOR THE REQUIRED START UP SITE INSPECTION TO REVIEW SITE CONDITIONS AND SCHEDULE FOLLOW UP INSTALLATIONS.
- INSTALLATION OF PLANT MATERIAL PRIOR TO INSPECTION BY THE LANDSCAPE ARCHITECT WILL BE THE CONTRACTOR'S RESPONSIBILITY.
- THE LANDSCAPE ARCHITECT RESERVES THE RIGHT TO REJECT ANY PLANTS, WHETHER INSTALLED OR NOT, WHICH DO NOT CONFORM TO THE SPECIFICATIONS AND/OR SITE DRAWING. REMOVE ALL REJECTED PLANTS FROM THE SITE IMMEDIATELY. DO NOT REMOVE ANY LABELS FROM PLANTS UNTIL PLANTS HAVE BEEN INSPECTED AND APPROVED BY THE LANDSCAPE ARCHITECT.
- ALL PLANT MATERIAL AND WORKMANSHIP WILL BE INSPECTED AND IS UNDER WARRANTY FOR A MINIMUM OF TWO YEAR FROM DATE OF WRITTEN ACCEPTANCE. ALL PLANT MATERIAL MUST BE IN A HEALTHY, VIGOROUS GROWING CONDITION SATISFACTORY TO THE CONTRACT ADMINISTRATOR AT THE END OF THE WARRANTY PERIOD OR BE REPLACED AT THE CONTRACTOR'S EXPENSE.
- FINAL ACCEPTANCE OF THE PROJECT WILL BE CARRIED OUT UPON COMPLETION OF ALL WORK INCLUDED IN THE CONTRACT.

TOPSOIL REQUIREMENTS

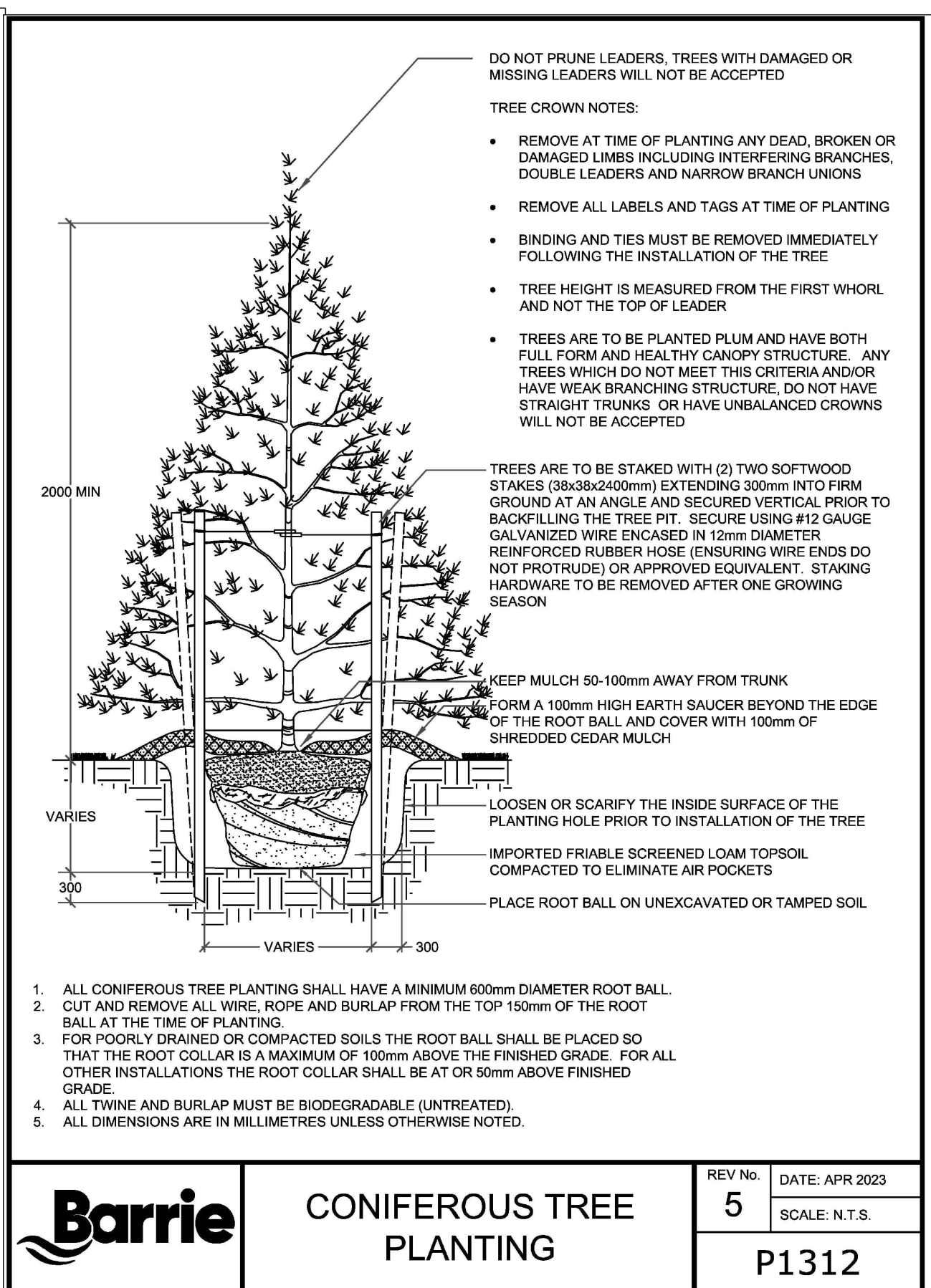
- PROVIDE MINIMUM SOIL VOLUME PER TREE AT 0.45m DEPTH FOR STREET TREES (OR ABOVE UTILITIES) AND MAX. 0.9m IN OTHER AREAS.
 - 18 m³ FOR LARGE TREES
 - 12 m³ FOR SMALL TREES
- PREPARED SOIL MIXTURE FOR EACH TREE PITS AND SHRUBS SHALL CONSIST OF HIGH QUALITY SOIL:
 - SIX PARTS OF FERTILE LOAM SOIL (50-60% SAND, 20-40% SILT, 6-10% CLAY, 2-3% ORGANIC), WITH A pH OF 7.5* OR LESS, FREE OF CLAY LUMPS, DEBRIS, TOXIC SUBSTANCES, STONES, WOODY MATERIAL, WEED SEEDS AND GRASS ROOTS
 - ONE PART COARSE PULVERIZED CANADIAN PEAT MOSS
 - ONE PART OF WELL-ROTTED FARM MANURE
- PREPARED SOIL MIXTURE FOR SOD AREAS SHALL CONSIST OF MIN. 20cm HIGH QUALITY SOIL:
 - SIX PARTS OF FERTILE LOAM SOIL (50-60% SAND, 20-40% SILT, 6-10% CLAY, 2-3% ORGANIC), WITH A pH OF 7.5* OR LESS, FREE OF CLAY LUMPS, DEBRIS, TOXIC SUBSTANCES, STONES, WOODY MATERIAL, WEED SEEDS AND GRASS ROOTS

PLANTING NOTES

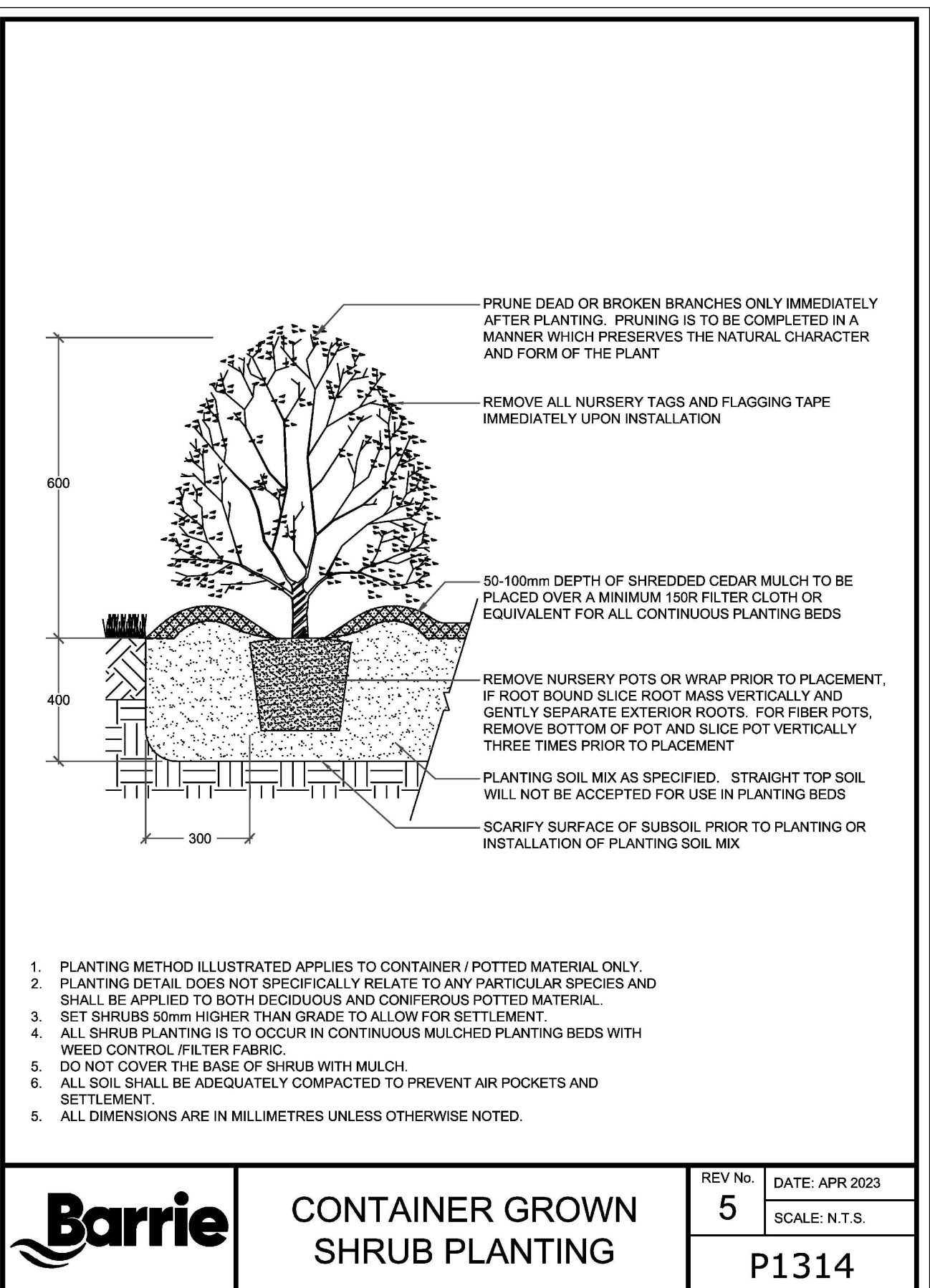
THIS NOTES SHALL BE READ IN CONJUNCTION WITH P1320 ON THIS PAGE



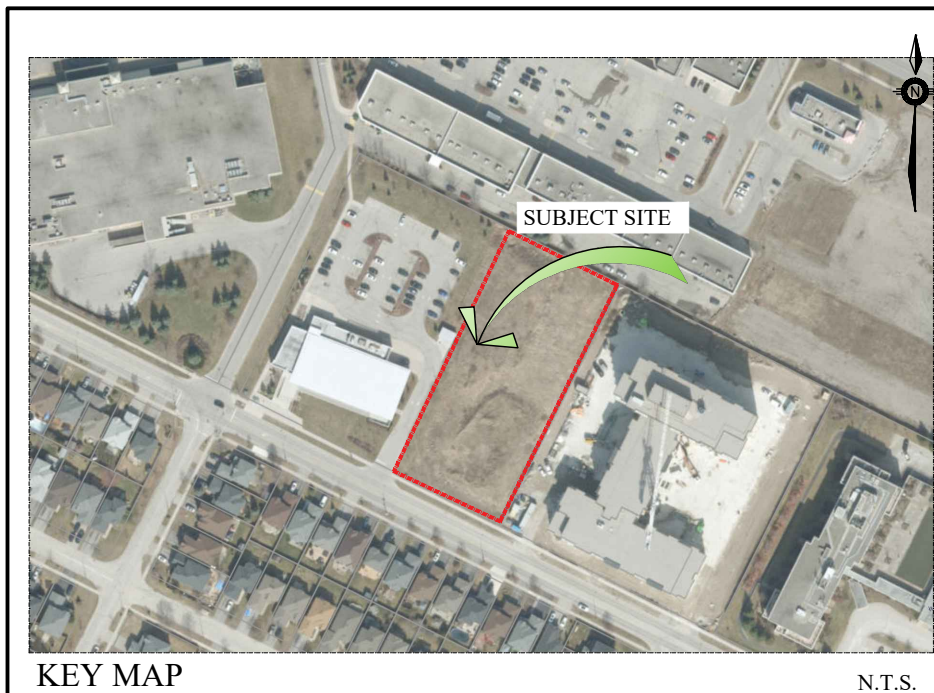
	DECIDUOUS TREE PLANTING	REV No. 5	DATE: APR 2023
		SCALE: N.T.S.	
		P1310	



	CONIFEROUS TREE PLANTING	REV No. 5	DATE: APR 2023
		SCALE: N.T.S.	
		P1312	



	CONTAINER GROWN SHRUB PLANTING	REV No. 5	DATE: APR 2023
		SCALE: N.T.S.	
		P1314	



GENERAL NOTES

CONTRACTOR IS RESPONSIBLE FOR ALL LOCATES INCLUDING ALL UNDERGROUND SERVICES PRIOR TO ANY EXCAVATION OR INSTALLATIONS. THE CONTRACTOR IS REQUIRED TO NOTIFY THE VARIOUS UTILITY COMPANIES 48 HOURS PRIOR TO THE COMMENCEMENT OF ANY WORK.

ANY ACCOMPANYING DOCUMENTATION RELATING TO THE LANDSCAPE PLAN AND/OR PRESERVATION PLAN SUCH AS TENDER DOCUMENTS AND CHANGE NOTICES ARE TO BE ENDORSED BY "JDB" PRIOR TO THE BEGINNING OF ANY SITE WORKS. IN THE EVENT THAT OF A DISCREPANCY THE DRAWING SHALL BE ASSUMED CORRECT.

IT IS THE RESPONSIBILITY OF THE PERSON OR PERSONS RESPONSIBLE FOR THE CONSTRUCTED WORKS TO NOTIFY THE LANDSCAPE ARCHITECT WHEN PREPARED FOR ANY REQUIRED INSPECTIONS AND SIGN OFFS.

SCHEDULED MEETINGS SHALL TAKE PLACE AT THE CLOSEST MUTUALLY CONVENIENT TIME.

No.	REVISION	DATE	APPRVD.
1.	SUBMISSION TO THE CITY OF BARRIE	March 7, 2025	ST

ALL DRAWINGS AND SPECIFICATIONS ARE INSTRUMENTS OF SERVICE AND ARE THE PROPERTY OF "JDB". DRAWINGS ARE NOT TO BE MODIFIED AND/OR REPRODUCED WITHOUT THE WRITTEN CONSENT OF "JDB". REPRODUCTION OF DRAWINGS IN ANY FORM WITHOUT THE CONSENT OF "JDB" VOIDS THE DRAWING AT WHICH TIME "JDB" ACCEPTS NO LIABILITY FOR THE DRAWING CONTENT OR WORKS RESULTING FROM SAID REPRODUCTION. DRAWINGS MAY BE REPRODUCED BY MUNICIPAL AND GOVERNMENT AGENCIES RESPONSIBLE FOR APPROVALS FOR THEIR OWN USE. "JDB" RESERVES THE RIGHT TO WITHDRAW ANY DRAWINGS FROM GOVERNMENT OR MUNICIPAL AGENCIES WHETHER APPROVED OR NOT IN THE EVENT THAT ACCOUNTS ARE NOT SETTLED OR REMAIN OUTSTANDING.

IT IS THE RESPONSIBILITY OF THE CONTRACTOR TO VERIFY ALL DIMENSIONS ON THE SITE AND REPORT ANY DISCREPANCIES OR VARIATIONS FROM THE SUPPLIED INFORMATION TO THE LANDSCAPE ARCHITECT WITH THE PROJECT. "JDB" IS NOT RESPONSIBLE FOR THE ACCURACY OF SURVEY, ARCHITECTURAL, MECHANICAL, ENGINEERING OR ELECTRICAL INFORMATION SHOWN ON THE DRAWING. FOR FURTHER INFORMATION REFER TO APPROPRIATE SURVEY, ARCHITECTURAL, MECHANICAL, ENGINEERING OR ELECTRICAL DRAWINGS PRIOR TO PROCEEDING WITH ANY WORKS.

THIS DRAWING IS NOT TO BE SCALED.

Client info:

Hansen Group Inc.
35 Worsley Street, Barrie, ON, L4M 1L7
ph 705-792-3883

BASE PLAN REVISED: January, 2025

ACCEPTED BY:

DATE: _____

LANDSCAPE ARCHITECT'S STAMP
STAMP AND SIGNATURE VOID IF REPRODUCED

JDB Landscaping Inc.

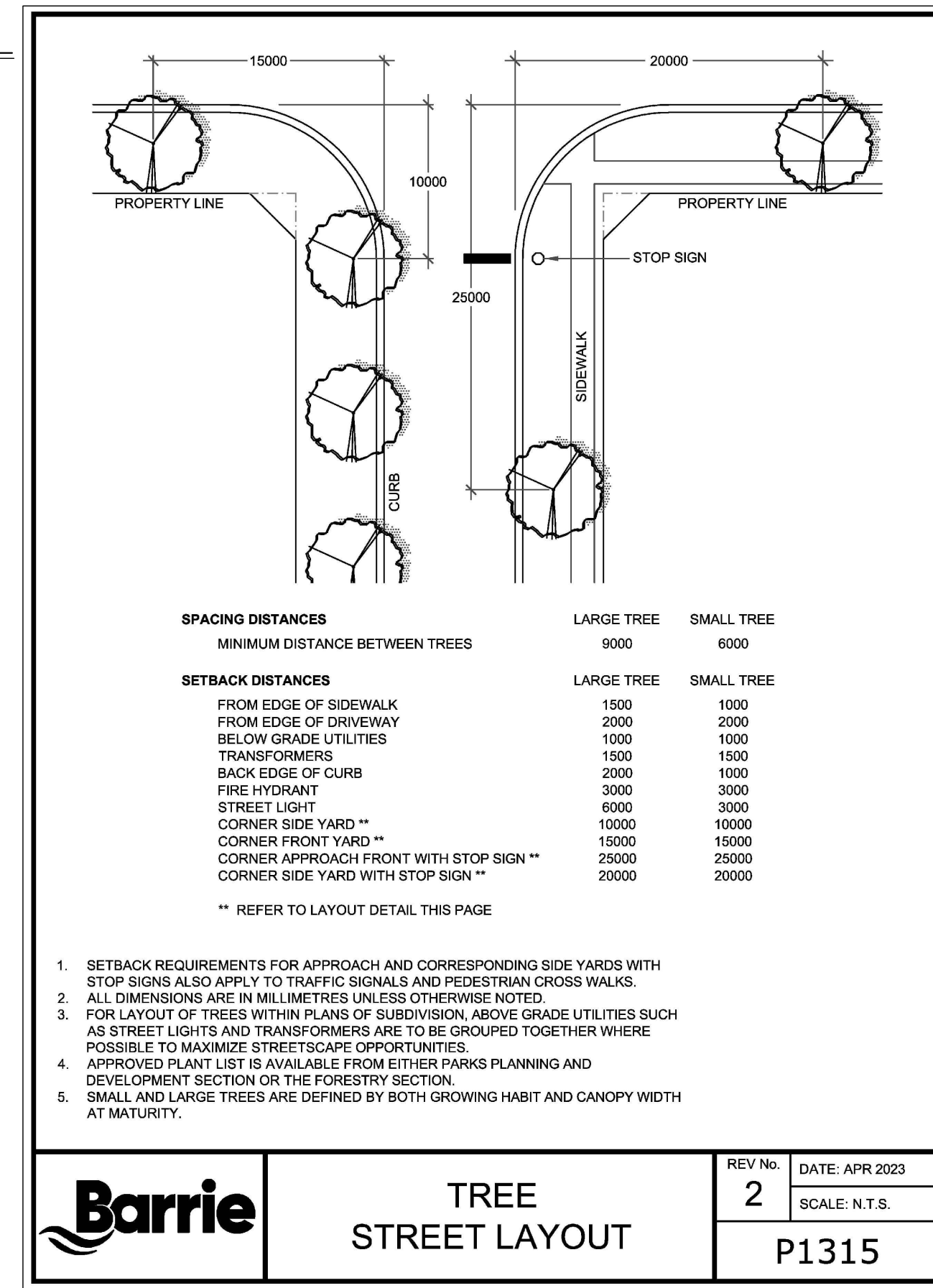
Urban Designers
Landscape Architects

5-190 Mine's Point Rd. Suite #403
Barrie, Ontario
L4N 8J8 C: 705-816-0042

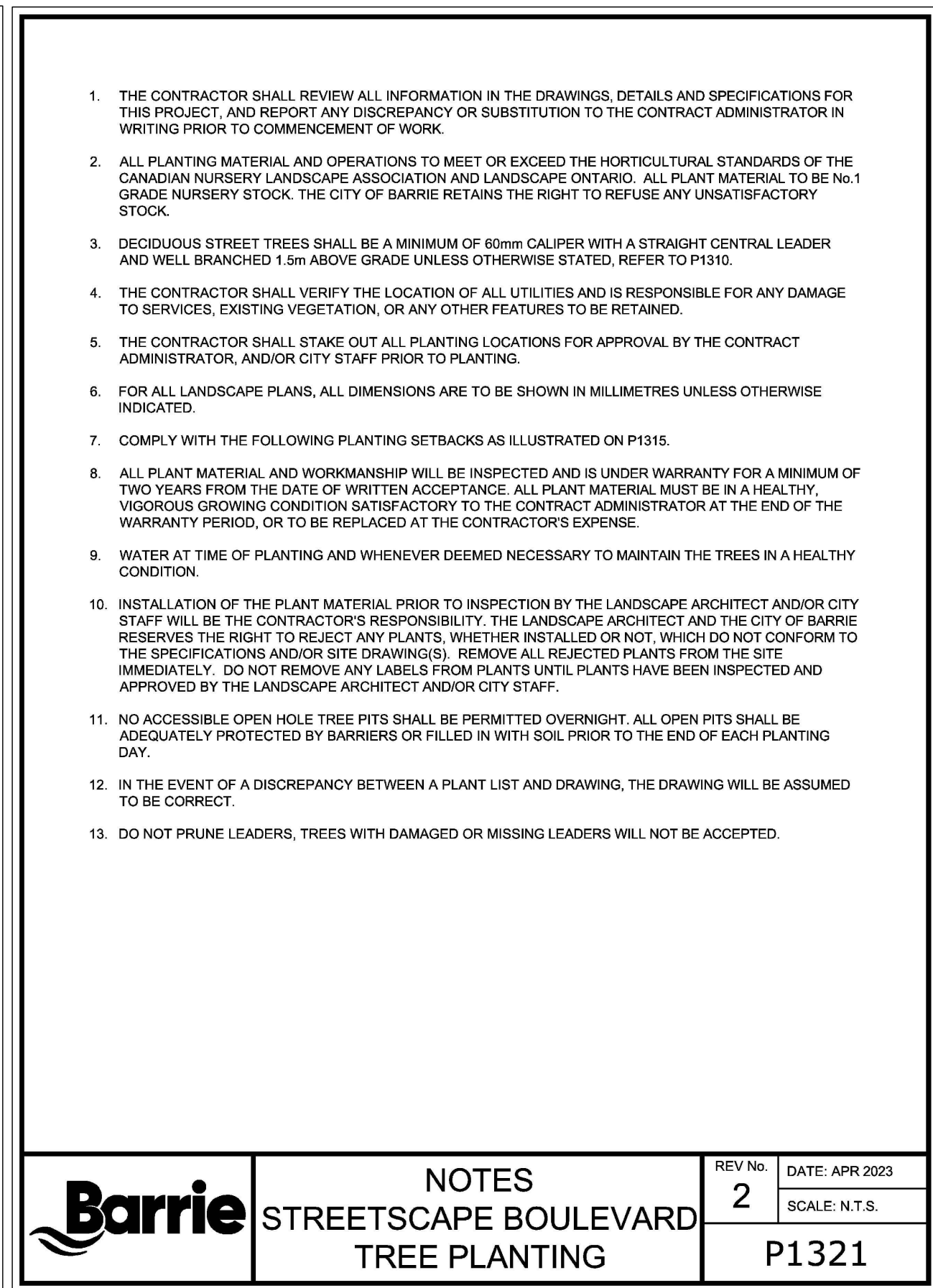
60 Dean Avenue
BLOCK 132
PART 2, PLAN 51R-10923
City of Barrie
THE LIBRARY RESIDENCES

LANDSCAPE PLAN DETAILS

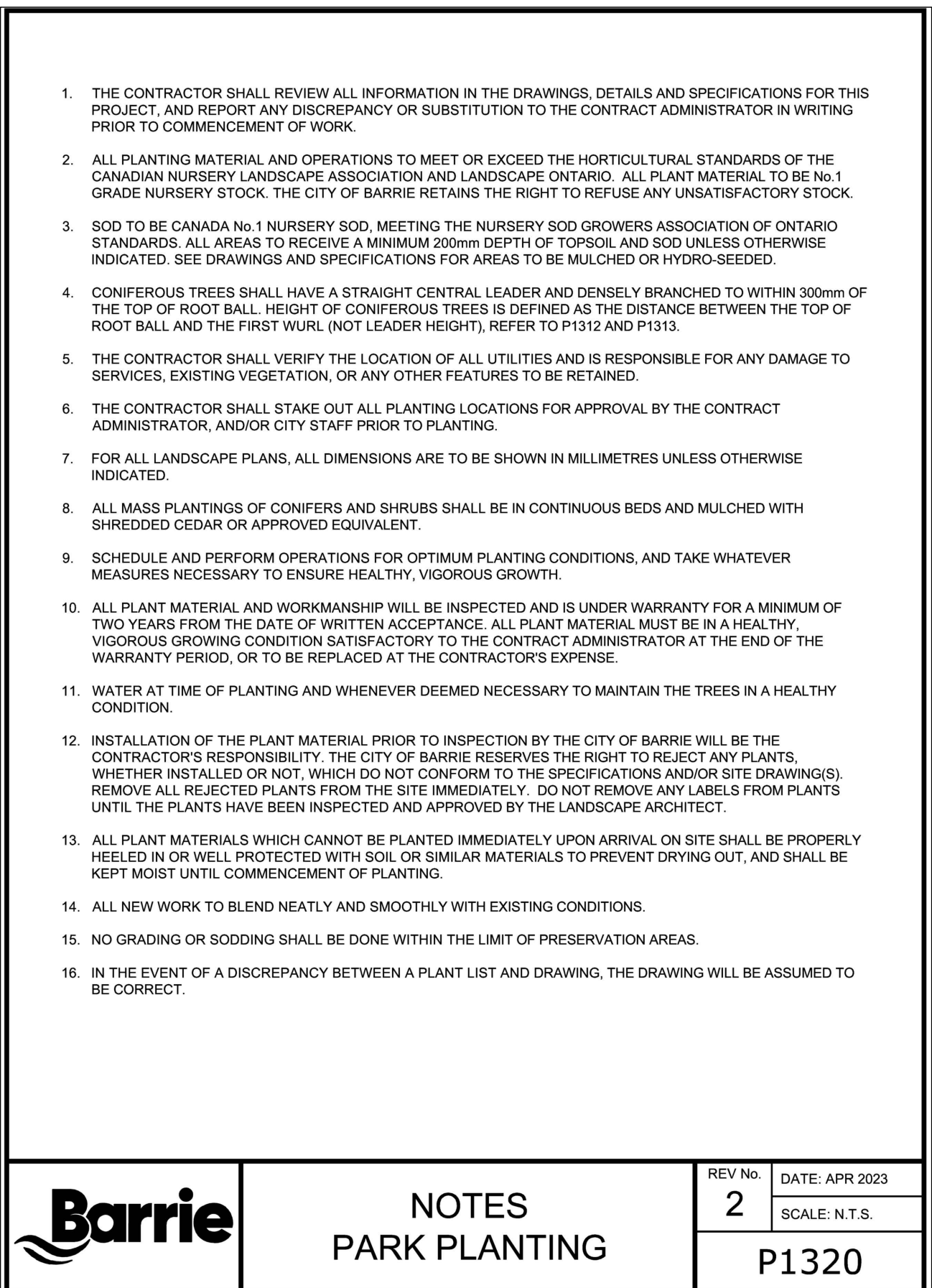
SCALE: N.T.S.	DESIGNED BY: ST	REVIEWED BY: KS
MUNICIPAL FILE No.	OUR FILE REF. # 7-25	LD-2



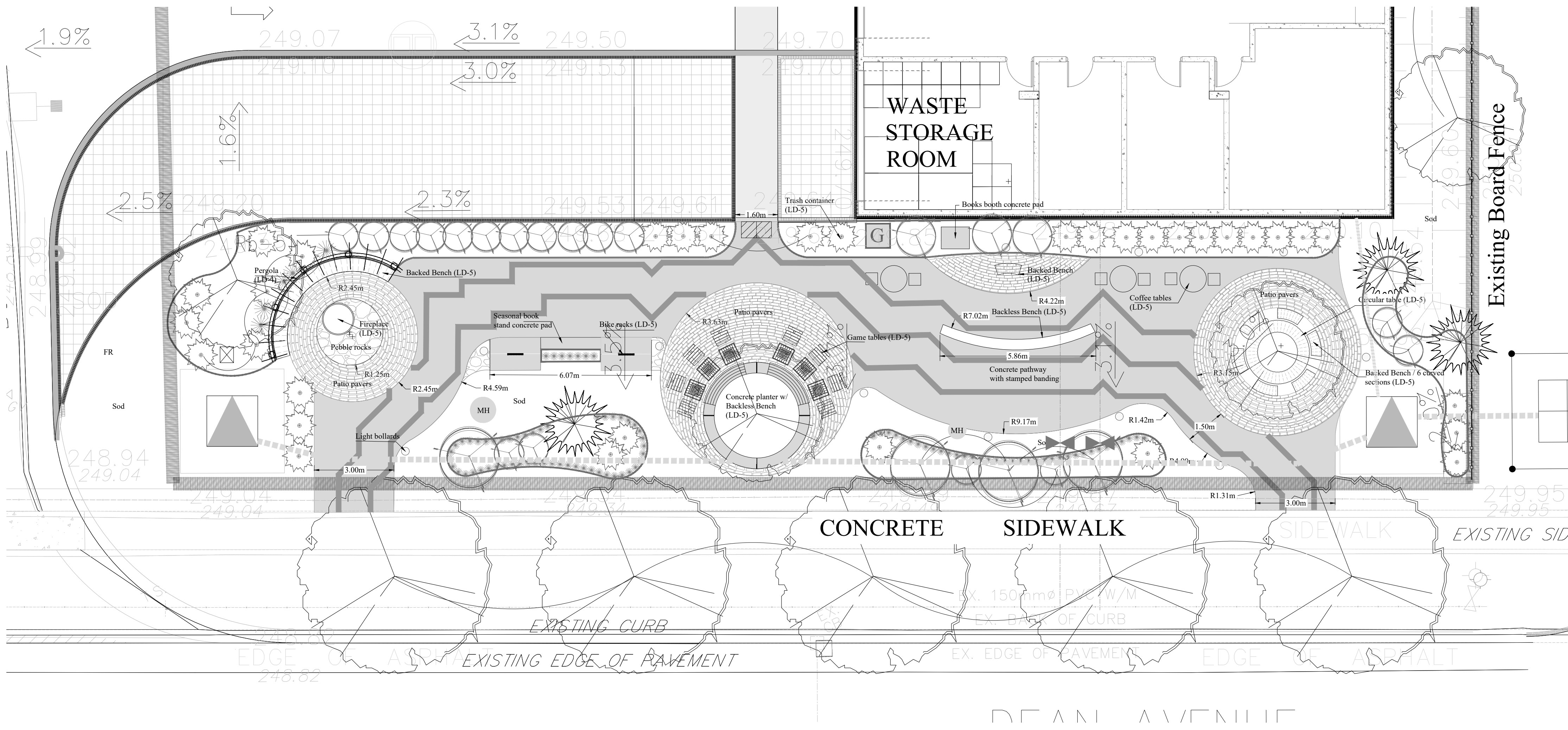
	TREE STREET LAYOUT	REV No. 2	DATE: APR 2023
		SCALE: N.T.S.	
		P1315	



	NOTES STREETSCAPE BOULEVARD TREE PLANTING	REV No. 2	DATE: APR 2023
		SCALE: N.T.S.	
		P1321	



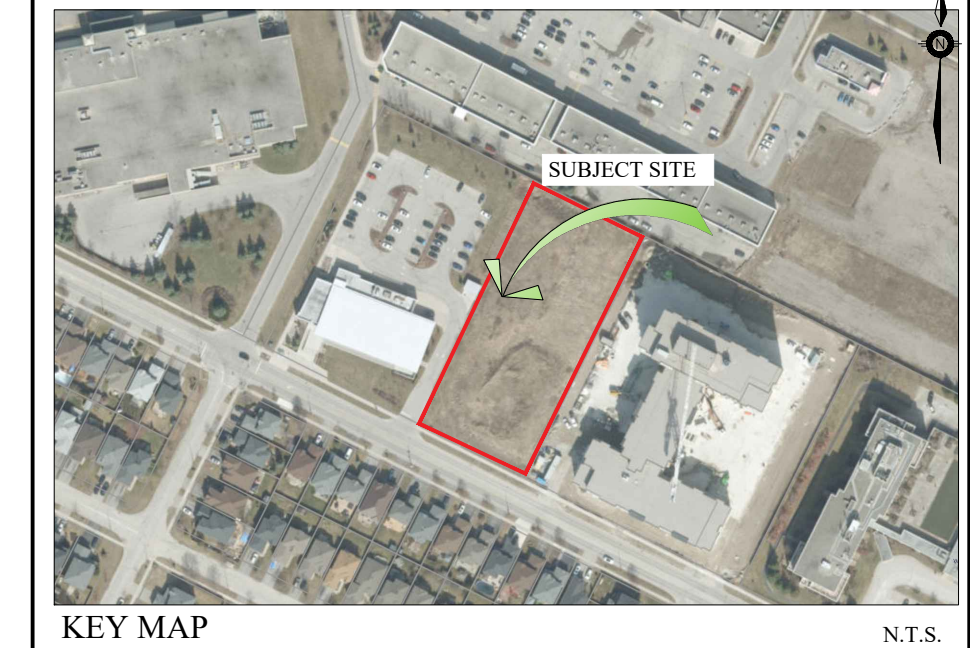
	NOTES PARK PLANTING	REV No. 2	DATE: APR 2023
		SCALE: N.T.S.	
		P1320	



RECOMMENDED SEASONAL BOOKS STAND BY THE OWNER



RECOMMENDED BOOKS BOOTH BY THE OWNER 75x81x227cm



KEY MAP N.T.S.

GENERAL NOTES

CONTRACTOR IS RESPONSIBLE FOR ALL LOCATES INCLUDING ALL UNDERGROUND SERVICES PRIOR TO ANY EXCAVATION OR INSTALLATIONS. THE CONTRACTOR IS REQUIRED TO NOTIFY THE VARIOUS UTILITY COMPANIES 48 HOURS PRIOR TO THE COMMENCEMENT OF ANY WORK.

ANY ACCOMPANYING DOCUMENTATION RELATING TO THE LANDSCAPE PLAN AND/OR PRESERVATION PLAN SUCH AS TENDER DOCUMENTS AND CHANGE NOTICES ARE TO BE ENDORSED BY "JDB" PRIOR TO THE BEGINNING OF ANY SITE WORKS. IN THE EVENT THAT A DISCREPANCY THE DRAWING SHALL BE ASSUMED CORRECT.

IT IS THE RESPONSIBILITY OF THE PERSON OR PERSONS RESPONSIBLE FOR THE CONSTRUCTED WORKS TO NOTIFY THE LANDSCAPE ARCHITECT WHEN PREPARED FOR ANY REQUIRED INSPECTIONS AND SIGN OFFS.

SCHEDULED MEETINGS SHALL TAKE PLACE AT THE CLOSEST MUTUALLY CONVENIENT TIME.

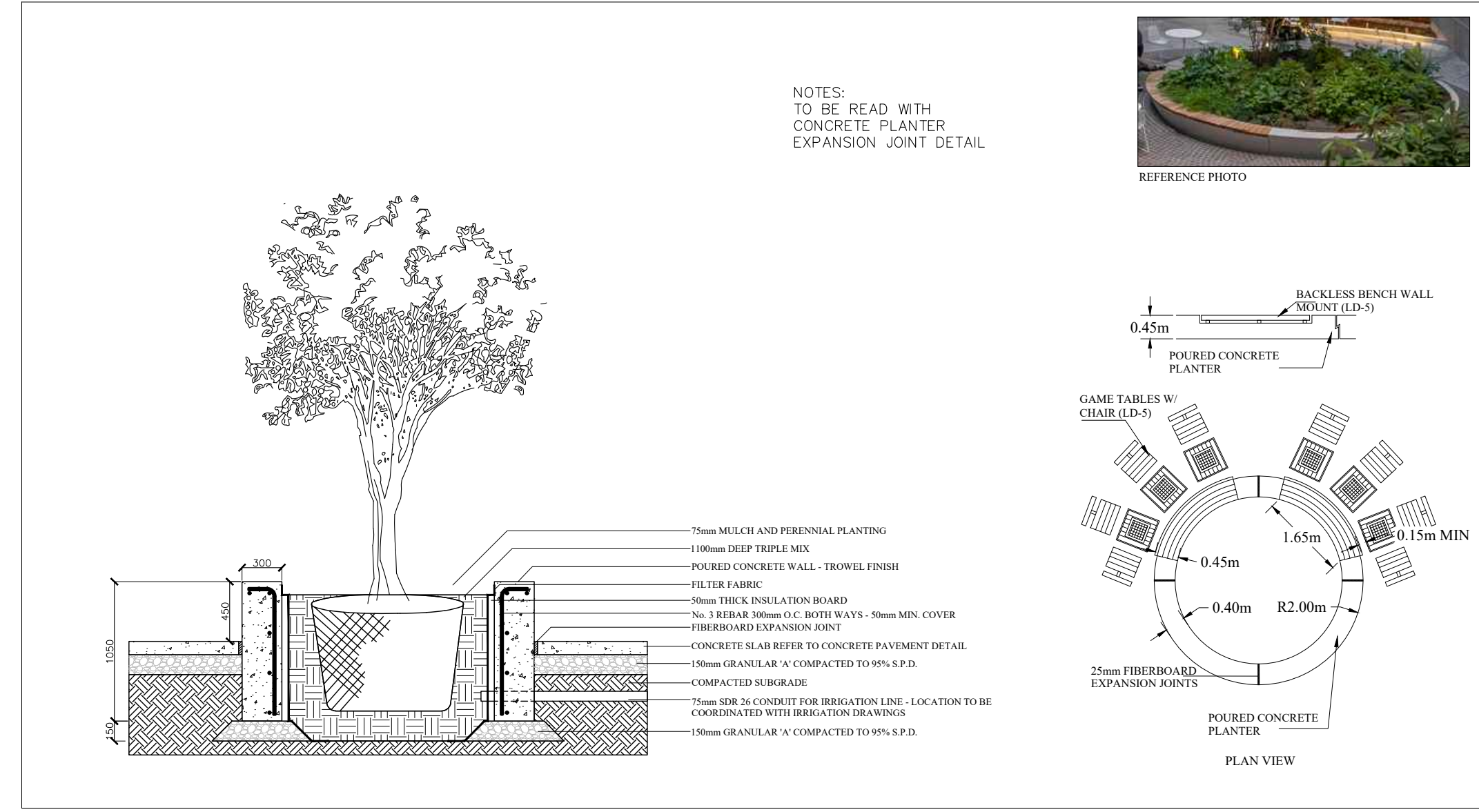
No.	REVISION	DATE	APRVD.
1.	SUBMISSION TO THE CITY OF BARRIE	March 7, 2025	SJT

ALL DRAWINGS AND SPECIFICATIONS ARE INSTRUMENTS OF SERVICE AND ARE THE PROPERTY OF "JDB". DRAWINGS ARE NOT TO BE MODIFIED AND/OR REPRODUCED WITHOUT THE WRITTEN CONSENT OF "JDB". REPRODUCTION OF DRAWINGS IN ANY FORM WITHOUT THE CONSENT OF "JDB" VOIDS THE DRAWING AT WHICH TIME "JDB" ACCEPTS NO LIABILITY FOR THE DRAWING CONTENT OR WORKS RESULTING FROM SAID REPRODUCTION. DRAWINGS MAY BE REPRODUCED BY MUNICIPAL AND GOVERNMENT AGENCIES RESPONSIBLE FOR APPROVALS FOR THEIR OWN USE. "JDB" RESERVES THE RIGHT TO WITHDRAW ANY DRAWINGS FROM GOVERNMENT OR MUNICIPAL AGENCIES WHETHER APPROVED OR NOT IN THE EVENT THAT ACCOUNTS ARE NOT SETTLED OR REMAIN OUTSTANDING.

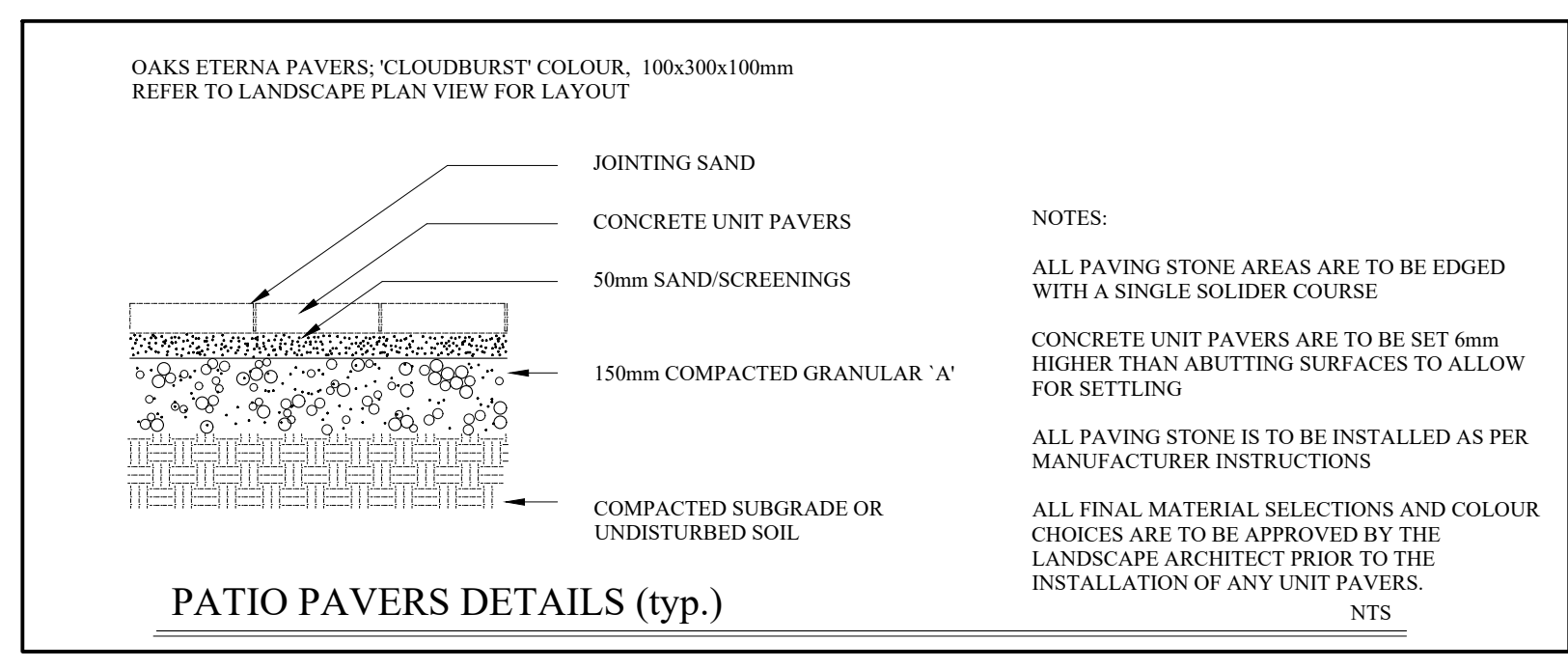
IT IS THE RESPONSIBILITY OF THE CONTRACTOR TO VERIFY ALL DIMENSIONS ON THE SITE AND REPORT ANY DISCREPANCIES OR VARIATIONS FROM THE SUPPLIED INFORMATION TO THE LANDSCAPE ARCHITECT WITH THE PROJECT. "JDB" IS NOT RESPONSIBLE FOR THE ACCURACY OF SURVEY, ARCHITECTURAL, MECHANICAL, ENGINEERING OR ELECTRICAL INFORMATION SHOWN ON THE DRAWING. FOR FURTHER INFORMATION REFER TO APPROPRIATE SURVEY, ARCHITECTURAL, MECHANICAL, ENGINEERING OR ELECTRICAL DRAWINGS PRIOR TO PROCEEDING WITH ANY WORKS.

THIS DRAWING IS NOT TO BE SCALED.

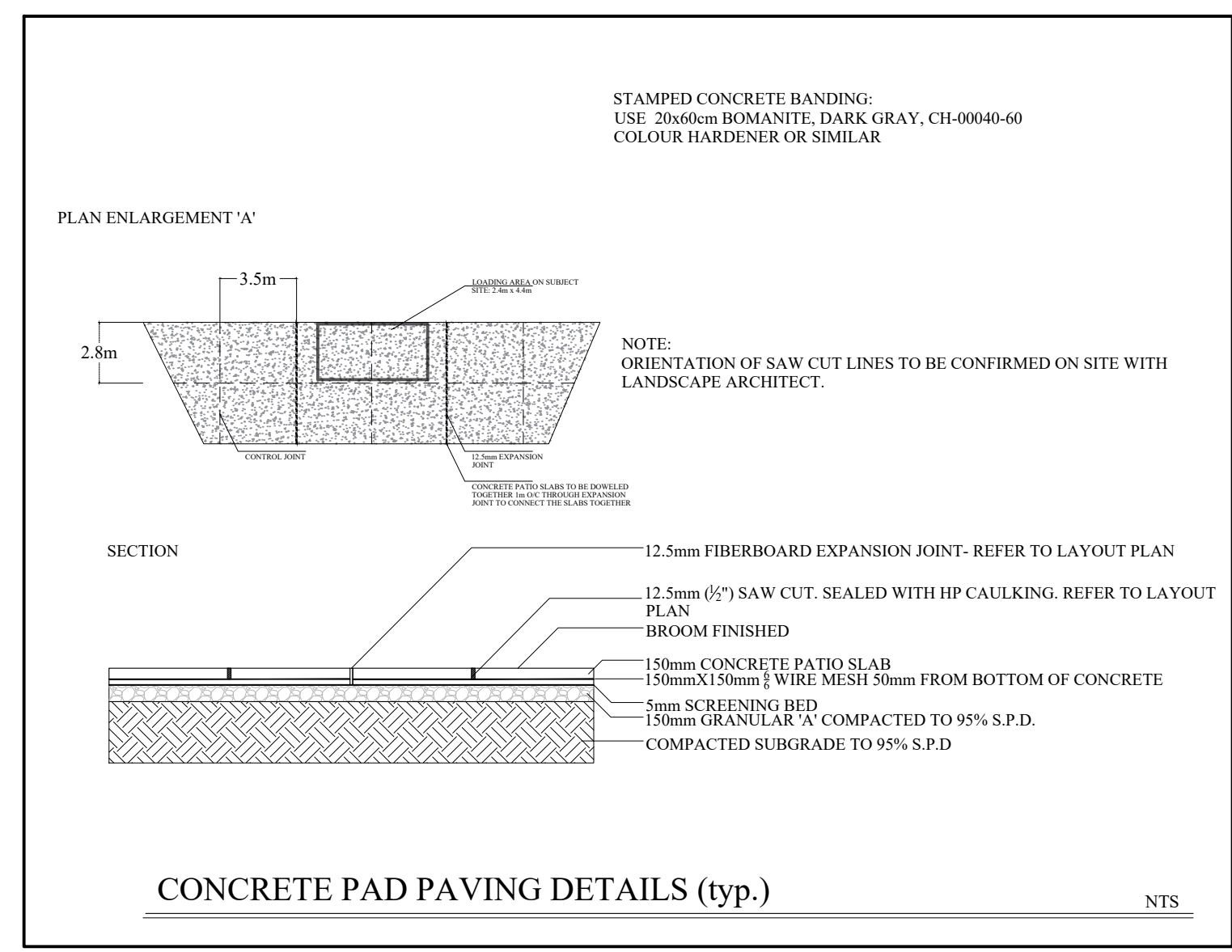
LANDSCAPE PLAN



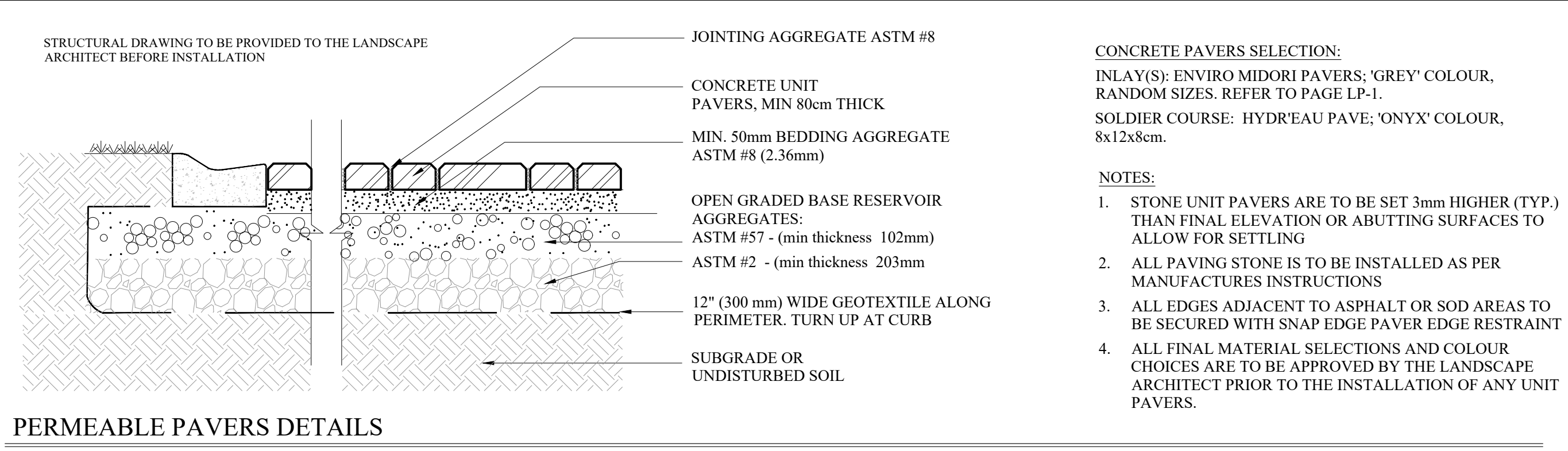
CONCRETE PLANTER DETAIL



PATIO PAVERS DETAILS (typ.)



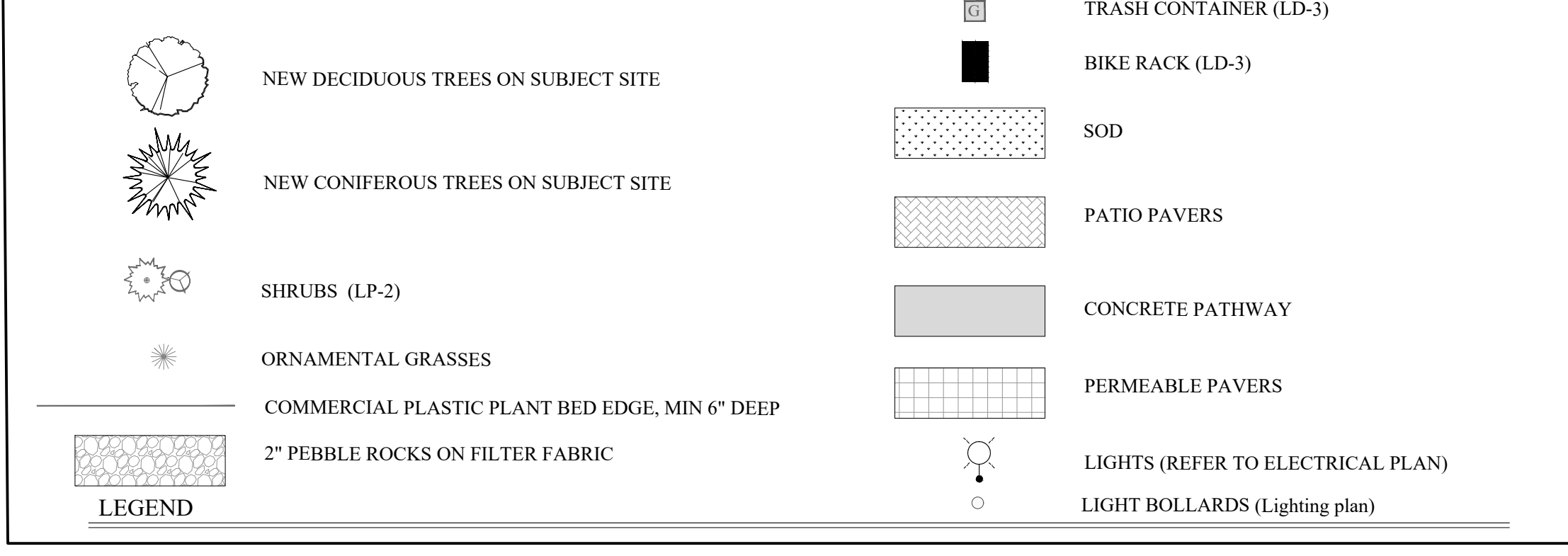
CONCRETE PAD PAVING DETAILS (typ.)



PERMEABLE PAVERS DETAILS

NOTE: FOR ALL PRODUCTS, SHOP DRAWINGS TO BE PROVIDED FOR APPROVAL BY THE LANDSCAPE ARCHITECT BEFORE INSTALLATION

- CONCRETE PAVERS SELECTION:**
 INLAY(S): ENVIRO MIDORI PAVERS; 'GREY' COLOUR, RANDOM SIZES. REFER TO PAGE LP-1.
 SOLDIER COURSE: HYDRE'EAU PAVE; 'ONYX' COLOUR, 8x12x8cm.
- NOTES:**
- STONE UNIT PAVERS ARE TO BE SET 3mm HIGHER (TYP.) THAN FINAL ELEVATION OR ABUTTING SURFACES TO ALLOW FOR SETTLING
 - ALL PAVING STONE IS TO BE INSTALLED AS PER MANUFACTURERS INSTRUCTIONS
 - ALL EDGES ADJACENT TO ASPHALT OR SOD AREAS TO BE SECURED WITH SNAP EDGE PAVER EDGE RESTRAINT
 - ALL FINAL MATERIAL SELECTIONS AND COLOUR CHOICES ARE TO BE APPROVED BY THE LANDSCAPE ARCHITECT PRIOR TO THE INSTALLATION OF ANY UNIT PAVERS.



Client info:
Hansen Group Inc.
 35 Worsley Street, Barrie, ON, L4M 1L7
 ph 705-792-3883

BASE PLAN REVISED: January, 2025

ACCEPTED BY:

DATE

LANDSCAPE ARCHITECTS STAMP

JDB Landscaping Inc.
 Urban Designers
 Landscape Architects
 5-190 Mine's Point Rd, Suite #403
 Barrie, Ontario
 L4N 8J8 C: 705-816-0042

60 Dean Avenue
 BLOCK 132
 PART 2, PLAN 51R - 10923
 City of Barrie
THE LIBRARY RESIDENCES
 PUBLIC OPEN PRIVATE SPACE

SCALE: 1:100
 MUNICIPAL FILE No. 7-25

DESIGNED BY: SJT
 OUR FILE REF. # 7-25

REVIEWED BY: KS
 LD-3

MTB-1900-30005

NAME	DIMENSION
A	24
B	N/A
B.1	43
B.2	N/A
C	N/A

ELEV. VIEW: TABLE W/

NAME	DIMENSION
A	N/A
B	N/A
B.1	N/A
B.2	N/A
C	N/A

MTB-1900-20000

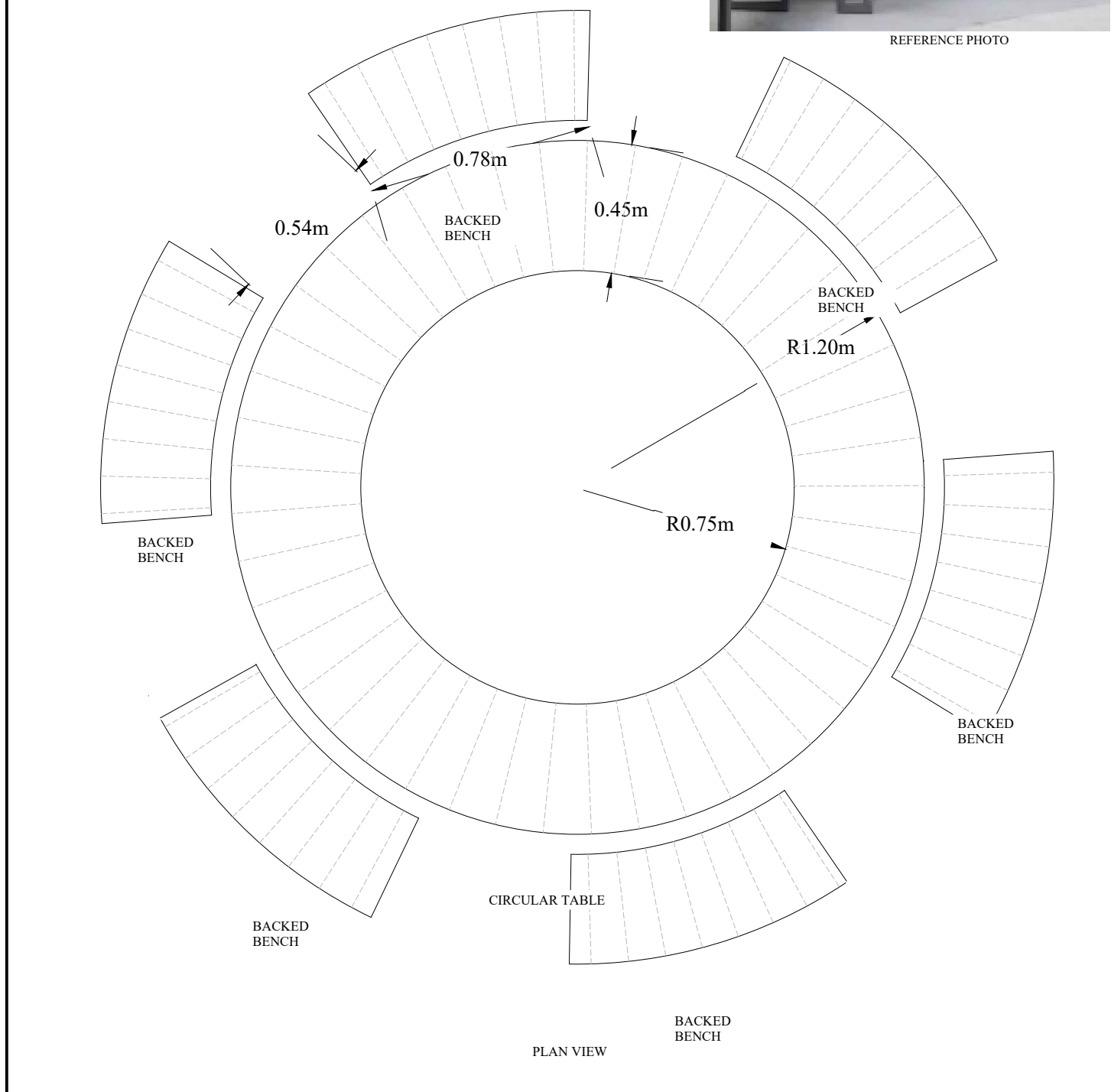
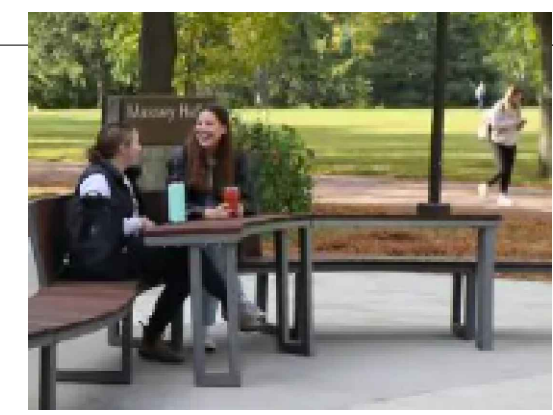
NAME	DIMENSION
A	24
B	N/A
B.1	43
B.2	N/A
C	N/A

MTB-1900-20000

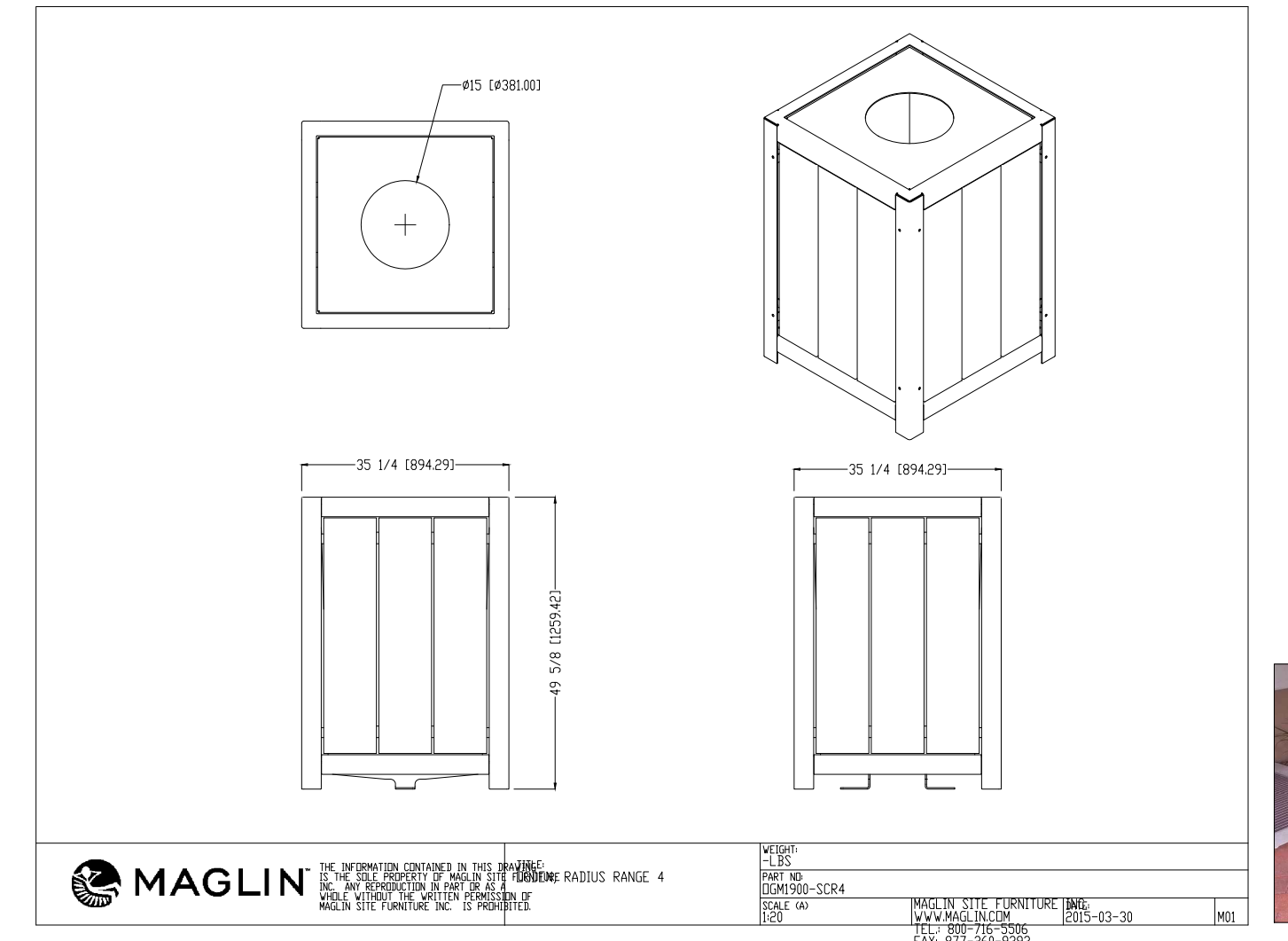
DATE: 1/27/2025
SCALE: 1/8" = 1'-0"

MAGLIN

3000-190-0000
1-800-888-8888
www.maglin.com



CIRCULAR TABLE W/ BACKED BENCH DETAILS



TRASH CONTAINER

OGDEN

OGM1900-BC1-SCR3

FRONT TO BACK SEATS (FB)
LEFT TO RIGHT SEATS (LR)

MATERIALS: The seat pan is constructed from steel. The seat employs (see wood, HDPE (plastic), or HDPE (recycled plastic)) slats.
FINISH: All steel components are protected with E-Coat rust proofing.
INSTALLATION: The seat pan is constructed from steel. The seat employs (see wood, HDPE (plastic), or HDPE (recycled plastic)) slats.
TO SPECIFY: Please contact your Maglin Site Furniture Representative.

SQUARE LEG - MS1
PIEDestal LEG - MS2
CANTILEVER - MS3
WALLMOUNT - MS4

DATE: 1/27/2025
SCALE: 1/8" = 1'-0"

MAGLIN

3000-190-0000
1-800-888-8888
www.maglin.com

BACKED BENCH DETAILS

OGDEN

RANGE 4

SQUARE LEG
PIEDestal LEG
WALLMOUNT
CANTILEVER

MATERIALS: The seat pan is constructed from steel. The seat employs (see wood, HDPE (plastic), or HDPE (recycled plastic)) slats.
FINISH: All steel components are protected with E-Coat rust proofing.
INSTALLATION: The seat pan is constructed from steel. The seat employs (see wood, HDPE (plastic), or HDPE (recycled plastic)) slats.
TO SPECIFY: Please contact your Maglin Site Furniture Representative.

DATE: 1/27/2025
SCALE: 1/8" = 1'-0"

MAGLIN

3000-190-0000
1-800-888-8888
www.maglin.com

BACKLESS BENCH DETAILS

COFFEE TABLE DETAILS

WOOD OPTIONS:
 PE S4S EE
 OTHER

NOTES:
1) ALL STL MEMBERS COATED W/ ZINC RICH EPOXY THEN FINISHED W/ POLYESTER POWDER COATING.
2) 1/2" x 3/4" EXPANSION ANCHOR BOLTS PROVIDED FOR S-2 OPTION.
3) 1/2" x 3/4" EXPANSION ANCHOR BOLTS PROVIDED FOR S-2 OPTION.

DATE: 1/27/2025
SCALE: 1/8" = 1'-0"

DuMor, Inc.

3000-190-0000
1-800-888-8888
www.dumor.com

COFFEE TABLE DETAILS

GAME TABLE DETAILS

WOOD OPTIONS:
 1" x 4" BIR OVALS FOR HD S4S EE
 PE S4S EE
 OTHER

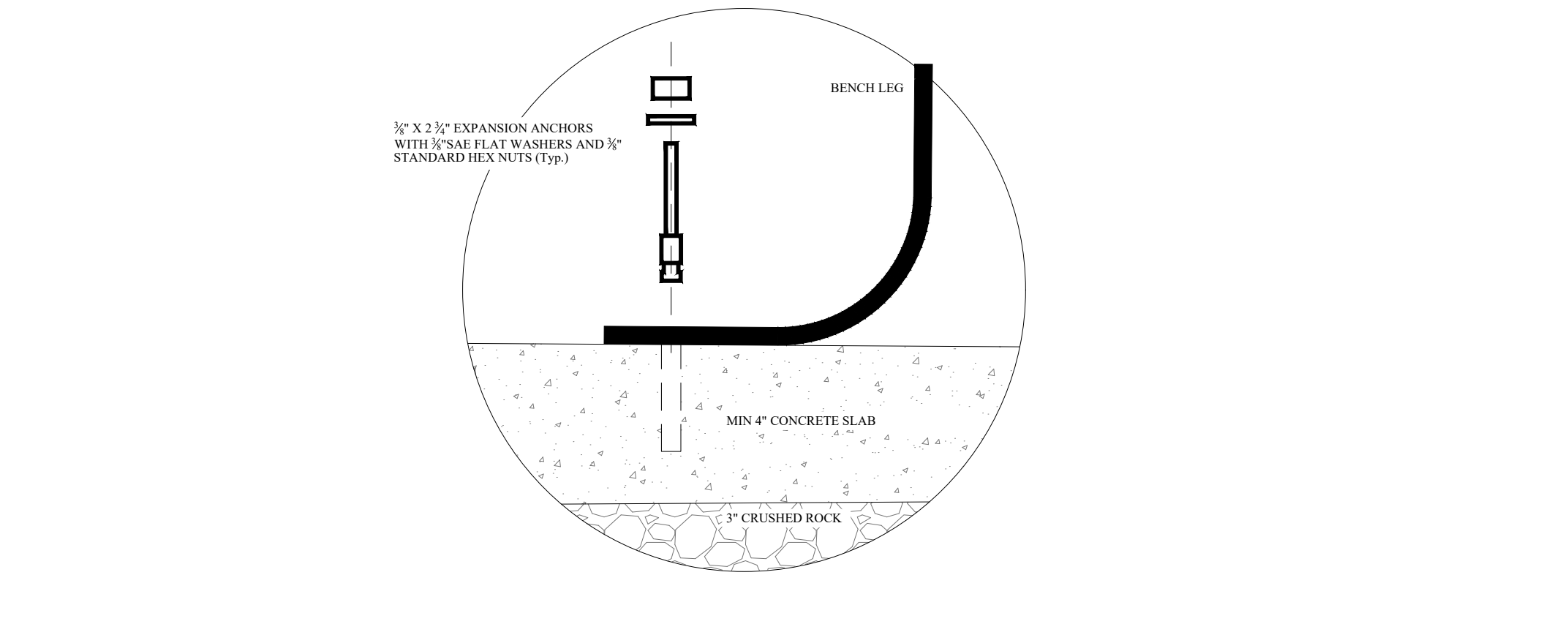
NOTES:
1) ALL STL MEMBERS COATED W/ ZINC RICH EPOXY THEN FINISHED W/ POLYESTER POWDER COATING.
2) ALL WOOD MEMBERS TREATED W/ CLEAR PRESERVATIVE.
3) 1/2" x 3/4" EXPANSION ANCHOR BOLTS PROVIDED FOR OPTIONS S-2 AND S-4.
4) UPGRADE APPLIES TO SUPPORT OPTION - CONSULT YOUR LOCAL REPRESENTATIVE.

DATE: 1/27/2025
SCALE: 1/8" = 1'-0"

DuMor, Inc.

3000-190-0000
1-800-888-8888
www.dumor.com

GAME TABLE DETAILS



LANDMARK BY CROZIER
1 YONGE STREET, SUITE 1801
TORONTO, ONTARIO M5E 1W7
416.241.7727
www.landmarkcrozier.ca

MADRAX

2" SQUARE STEEL TUBING

1/4 X 5/8 6" STEEL PLATE WITH 3/16 DIA. MOUNTING HOLES

WITH LEAN BAR

LAG BOLT

CONCRETE

SURFACE FLANGE MOUNT (SF)

2 BIKE, SURFACE OR IN GROUND MOUNT

PRODUCT: ORNS-2(LB)-IG(SF)
DESCRIPTION: ORION BIKE RACK

NOTES:
1. INSTALL BIKE RACKS ACCORDING TO MANUFACTURER'S SPECIFICATIONS.
2. CONSULTANT TO SELECT COLOR (FINISH), SEE MANUFACTURER'S SPECIFICATIONS.
3. SEE SITE PLAN FOR LOCATION OR CONSULT OWNER.

ARRANGEMENT AT 45° TO WALL
ARRANGEMENT AT 90° TO WALL
ARRANGEMENT PARALLEL TO SIDEWALK EDGE

DATE: 1/27/2025
SCALE: 1/8" = 1'-0"

MAGLIN

3000-190-0000
1-800-888-8888
www.maglin.com

BIKE RACK DETAIL

COFFEE TABLE DETAILS

GAME TABLE DETAILS

DREAMCAST DESIGN AND PRODUCTION LTD.
2200 VAUXHALL PLACE
RICHMOND, BC V6V 1Z9
TOLL FREE: 1-888-616-4939
PHONE: (604) 278-4939
www.dreamcastdesign.com

SELECT DESIRED COLOUR:
 HAZE
 CHOCOLATE
 LONDON FOG
 MOONLIGHT
 CAPPUCINO
 MIST
 PORTOBELLO
 CHARCOAL
 CHALK
 MOCHA

SELECT DESIRED ACCESSORIES:
 LAVA ROCK (ALWAYS INCLUDED)
 TUMBLER LAVA ROCK (MEDIUM SIZE)
 BLACK FIRE PIT COVER
 GLASS BARRIER
 CERAMIC LOG SET
 CERAMIC RIVER STONES
 CERAMIC CANNONBALLS
 FIRE GLASS BEADS
 EBONY
 QUARTZ
 FIRE GLASS
 PREMIUM BLACK
 STARFIRE
 COPPER

SELECT DESIRED IGNITION TYPE:
 MANUAL LIT
 ELECTRONIC
 PUSH BUTTON
 STANDING PILOT

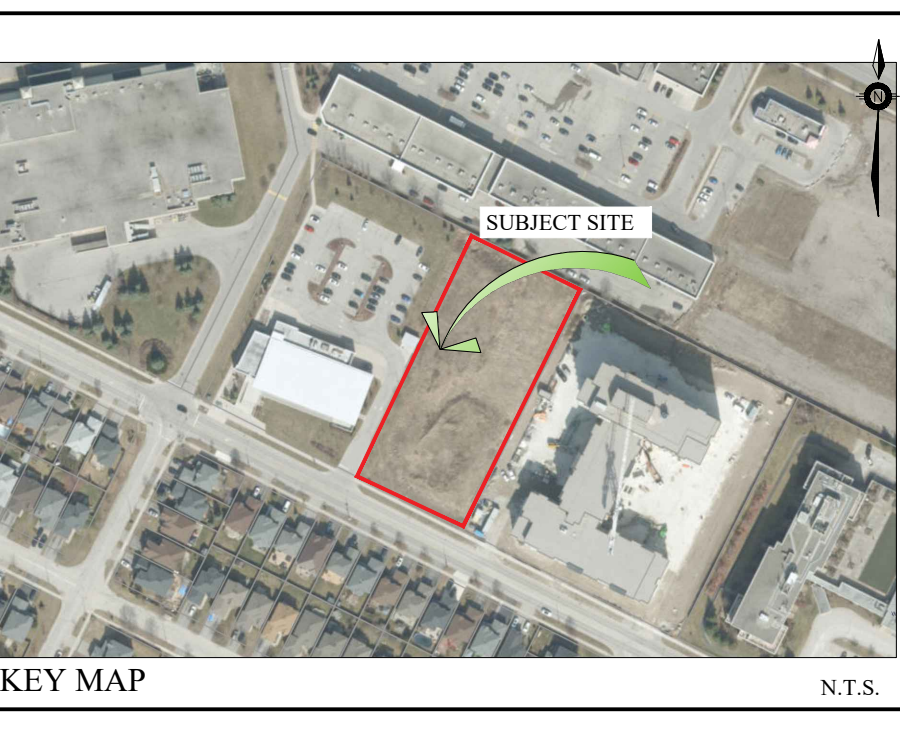
SPECIFICATIONS:
OUTPUT: UP TO 240,000
WEIGHT: 253 LBS
- LIQUID PROPANE OR NATURAL GAS, ETL LISTED PRODUCT

DATE: 1/27/2025
SCALE: 1/8" = 1'-0"

DuMor, Inc.

3000-190-0000
1-800-888-8888
www.dumor.com

FIRE PIT DETAIL



GENERAL NOTES

CONTRACTOR IS RESPONSIBLE FOR ALL LOCATES INCLUDING ALL UNDERGROUND SERVICES PRIOR TO ANY EXCAVATION OR INSTALLATIONS. THE CONTRACTOR IS REQUIRED TO NOTIFY THE VARIOUS UTILITY COMPANIES 48 HOURS PRIOR TO THE COMMENCEMENT OF ANY WORK.

ANY ACCOMPANYING DOCUMENTATION RELATING TO THE LANDSCAPE PLAN AND/OR PRESERVATION PLAN SUCH AS TENDER DOCUMENTS AND CHANGE NOTICES ARE TO BE ENDORSED BY "JDB" PRIOR TO THE BEGINNING OF ANY SITE WORKS. IN THE EVENT THAT OF A DISCREPANCY THE DRAWING SHALL BE ASSUMED CORRECT.

IT IS THE RESPONSIBILITY OF THE PERSON OR PERSONS RESPONSIBLE FOR THE CONSTRUCTED WORKS TO NOTIFY THE LANDSCAPE ARCHITECT WHEN PREPARED FOR ANY REQUIRED INSPECTIONS AND SIGN OFFS.

SCHEDULED MEETINGS SHALL TAKE PLACE AT THE CLOSEST MUTUALLY CONVENIENT TIME.

No.	REVISION	DATE	APRVD.
1.	SUBMISSION TO THE CITY OF BARRIE	March 7, 2025	ST

ALL DRAWINGS AND SPECIFICATIONS ARE INSTRUMENTS OF SERVICE AND ARE THE PROPERTY OF "JDB". DRAWINGS ARE NOT TO BE MODIFIED AND/OR REPRODUCED WITHOUT THE WRITTEN CONSENT OF "JDB". REPRODUCTION OF DRAWINGS IN ANY FORM WITHOUT THE CONSENT OF "JDB" VOIDS THE DRAWING AT WHICH TIME "JDB" ACCEPTS NO LIABILITY FOR THE DRAWING CONTENT OR WORKS RESULTING FROM SAID REPRODUCTION. DRAWINGS MAY BE REPRODUCED BY MUNICIPAL AND GOVERNMENT AGENCIES RESPONSIBLE FOR APPROVALS FOR THEIR OWN USE. "JDB" RESERVES THE RIGHT TO WITHDRAW ANY DRAWING(S) FROM GOVERNMENT OR MUNICIPAL AGENCIES WHETHER APPROVED OR NOT IN THE EVENT THAT ACCOUNTS ARE NOT SETTLED OR REMAIN OUTSTANDING.

IT IS THE RESPONSIBILITY OF THE CONTRACTOR TO VERIFY ALL DIMENSIONS ON THE SITE AND REPORT ANY DISCREPANCIES OR VARIATIONS FROM THE SUPPLIED INFORMATION TO THE LANDSCAPE ARCHITECT WITH THE PROJECT. "JDB" IS NOT RESPONSIBLE FOR THE ACCURACY OF SURVEY, ARCHITECTURAL, MECHANICAL, ENGINEERING OR ELECTRICAL INFORMATION SHOWN ON THE DRAWING. FOR FURTHER INFORMATION REFER TO APPROPRIATE SURVEY, ARCHITECTURAL, MECHANICAL, ENGINEERING OR ELECTRICAL DRAWINGS PRIOR TO PROCEEDING WITH ANY WORKS.

THIS DRAWING IS NOT TO BE SCALED.

Client info:
Hansen Group Inc.
35 Worsley Street, Barrie, ON, L4M 1L7
ph 705-792-3883

BASE PLAN REVISED: January, 2025

ACCEPTED BY:

DATE:

LANDSCAPE ARCHITECTS STAMP

JDB Landscaping Inc.
Urban Designers
Landscape Architects
5-190 Minnet's Point Rd. Suite #403
Barrie, Ontario
L4N 8J8
C: 705-816-0042

60 Dean Avenue
BLOCK 132
PART 2, PLAN 51R - 10923
City of Barrie
THE LIBRARY RESIDENCES

SITE FURNITURE

SCALE:	DESIGNED BY:	REVIEWED BY:
	ST	KS
MUNICIPAL FILE No.	OUR FILE REF. #	LD-5
	7-25	