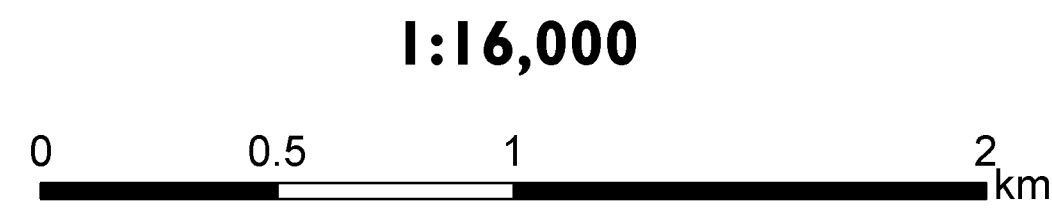




**Official Plan Amendment
Boundary Adjustment 2026
OPA 006 / OPA 007
Official Plan - Map 4a
Mobility Network**



The City of Barrie does not warrant the accuracy, completeness, content, or currency of the information provided.
This is not a legal Plan of Survey
Copyright © City of Barrie 2026
Produced (in part) under license from:
© King's Printer, Ontario Ministry of Natural Resources. All rights reserved;
© His Majesty the King in Right of Canada, Department of Natural Resources. All rights reserved;
© Members of the Ontario Geospatial Data Exchange. All rights reserved.
For information please contact Service Barrie at 705-726-4242 or ServiceBarrie@barrie.ca
Development Services - Planning 2026-04-20

Road Network

- Highway
- Ramp
- Major Road
- Local Road

Alternative Transportation Network

- Network Hub (approx. location)
- Trails
- Cycling Network
- Railway Line

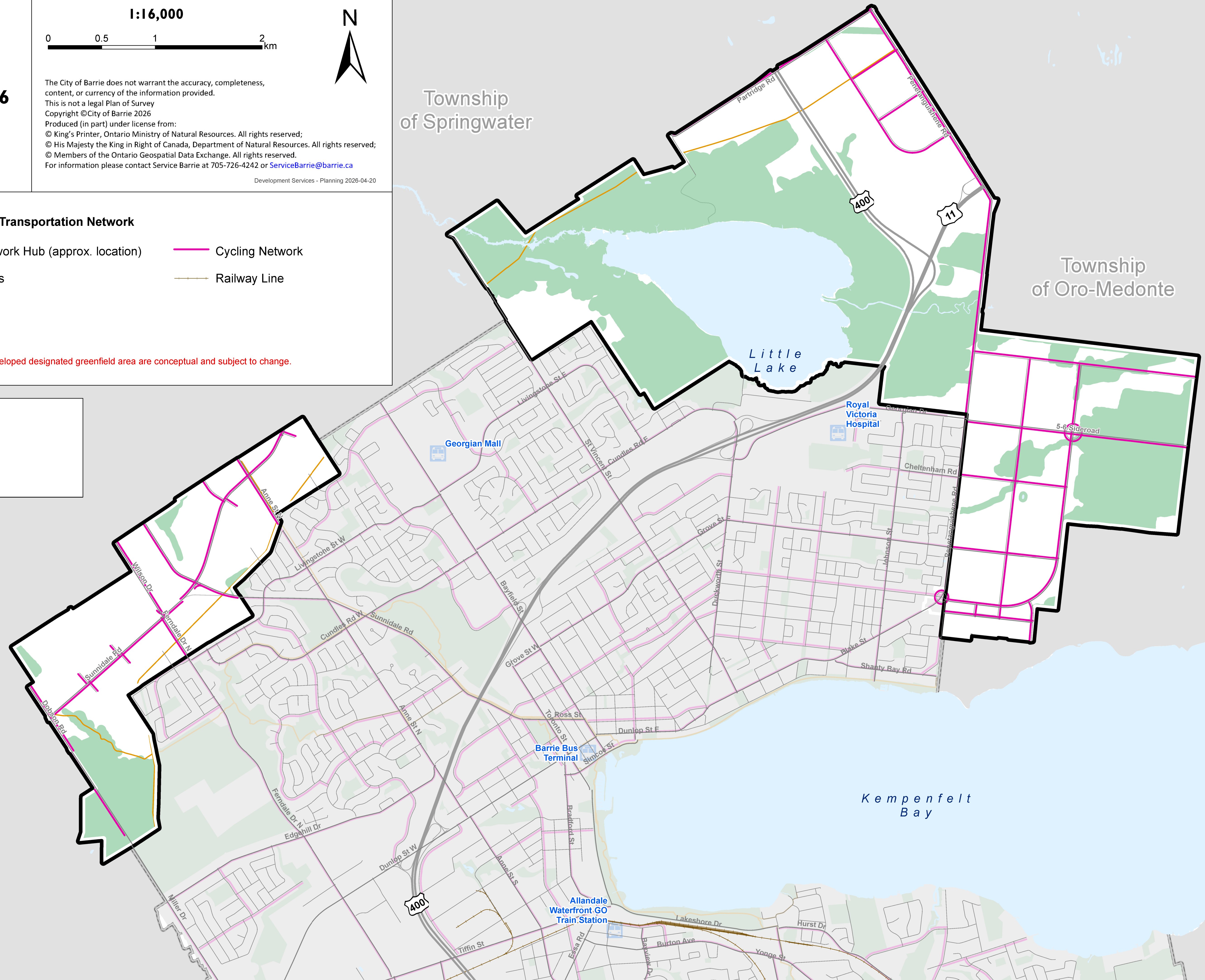
* Certain features like roads, parks and trails within the undeveloped designated greenfield area are conceptual and subject to change.

- Lands Subject to OPA 006 / OPA 007
- Settlement Area - City Boundary
- Lands Outside City Boundary
- Land Use Designation - NHS & GS

Township of Springwater

Township of Oro-Medonte

Township of Springwater



Little Lake

Royal Victoria Hospital

Georgian Mall

Barrie Bus Terminal

Allandale Waterfront GO Train Station

Kempenfelt Bay