

GENERAL NOTES
REFER TO CURRENT CITY OF BARRIE STANDARDS FOR APPLICABLE GENERAL NOTES.

BENCH MARKS
DISTANCE NOTE
DISTANCES SHOWN HEREON ARE GRID DISTANCES AND CAN BE CONVERTED TO GROUND DISTANCES BY MULTIPLYING BY THE COMBINED SCALE FACTOR OF 1.0003.

BEARING NOTE
BEARINGS HEREIN ARE GRID BEARINGS AND ARE DERIVED FROM CONTROL MONUMENTS 031910009 (N=4914801.348, E=601084.468) AND 010860410 (N=4913103.462, E=606668.620), AND ARE REFERRED TO THE CENTRAL MERIDIAN (81 DEGREES OF LONGITUDE) IN ZONE 17 AND ARE BASED ON NAD83 (76 ADJUSTMENT).

BENCH MARK V010865470
269.731 CONCRETE TABLE SET IN CONCRETE HEADWALL OF UNDERGROUND SEWER ENTRANCE ON WEST SIDE OF FERNDALE DRIVE NORTH, 1.0M NORTH OF EDGEHILL DRIVE. TABLE IS SET HORIZONTALLY IN EAST FACE OF WESTERLY WALL, 15.0M WEST OF CENTRELINE OF FERNDALE DRIVE NORTH, 44CM SOUTH OF NORTHWEST END AND 37CM BELOW TOP OF CONCRETE WALL.
BENCH MARKS WILL BE FROM CITY OF BARRIE VERTICAL CONTROL NETWORK. INITIAL BENCH MARK TO BE OF 2nd ORDER ACCURACY.

NO.	REVISIONS	DATE	APPROVED
1.	90% DESIGN	APR/2026	J.V.

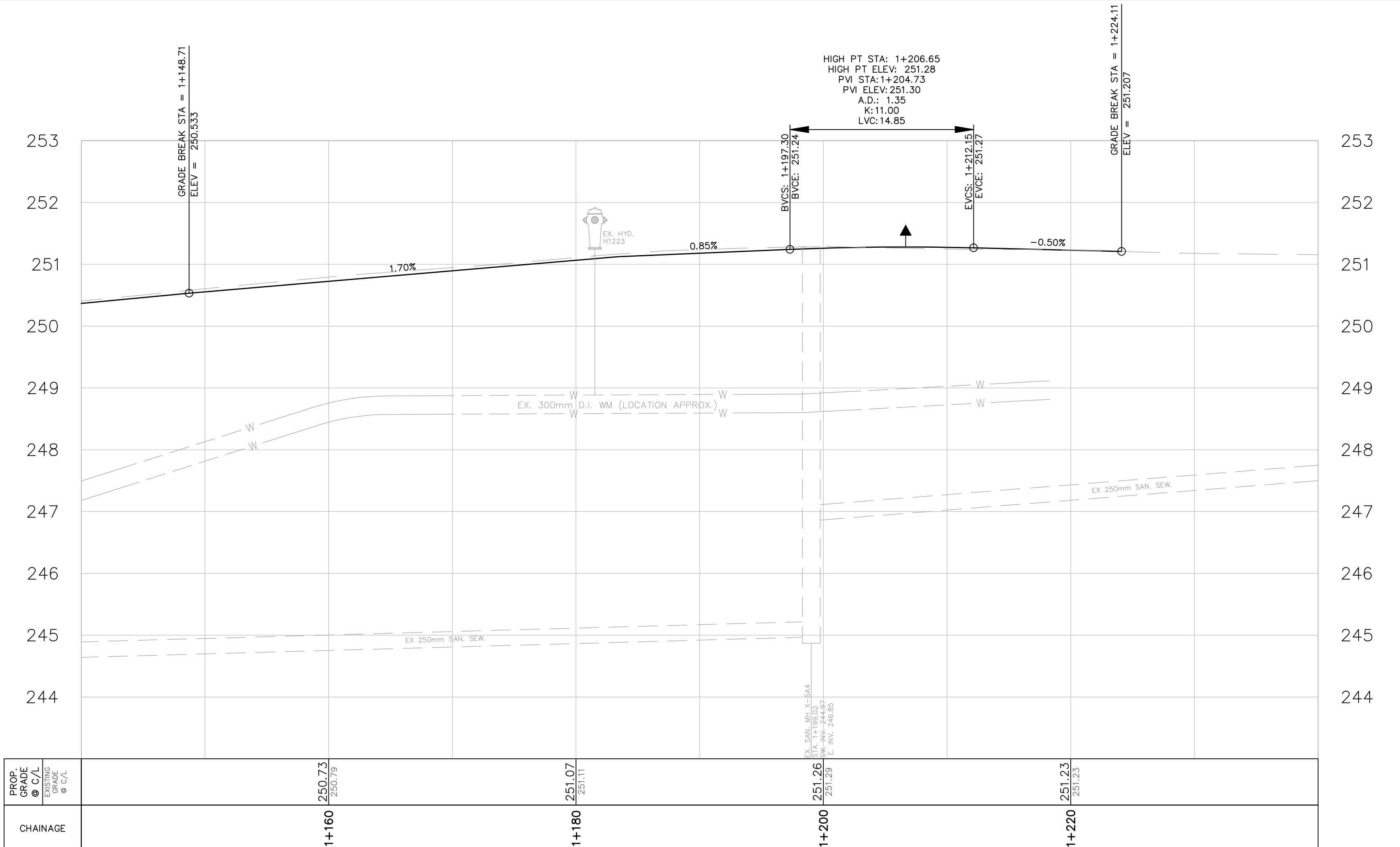
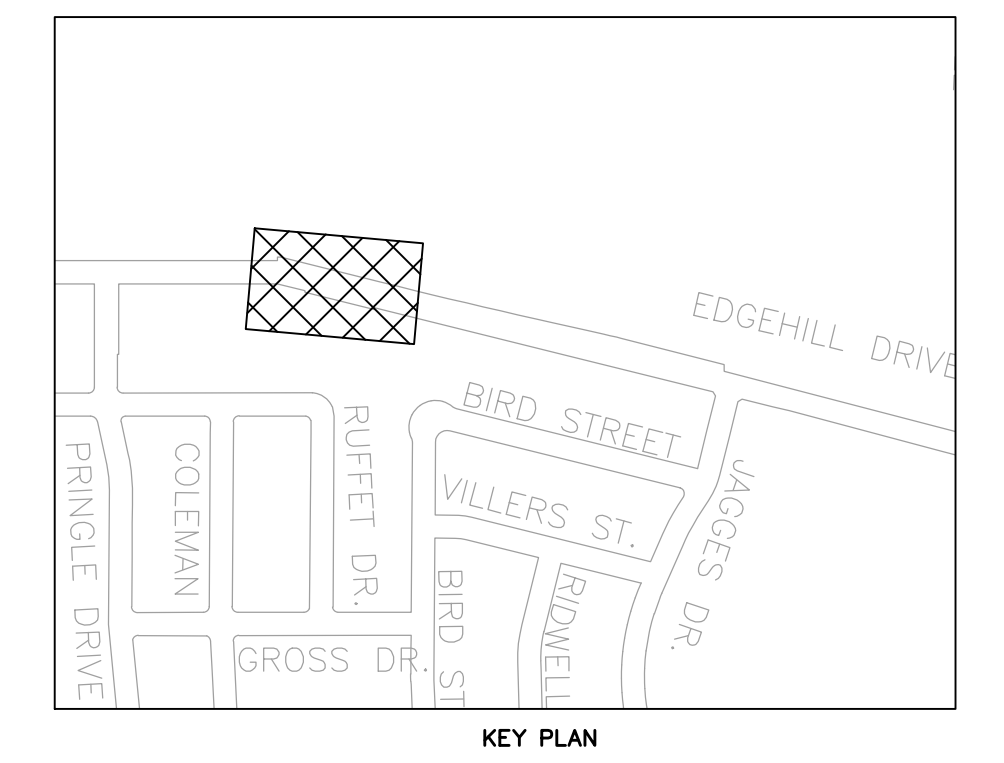
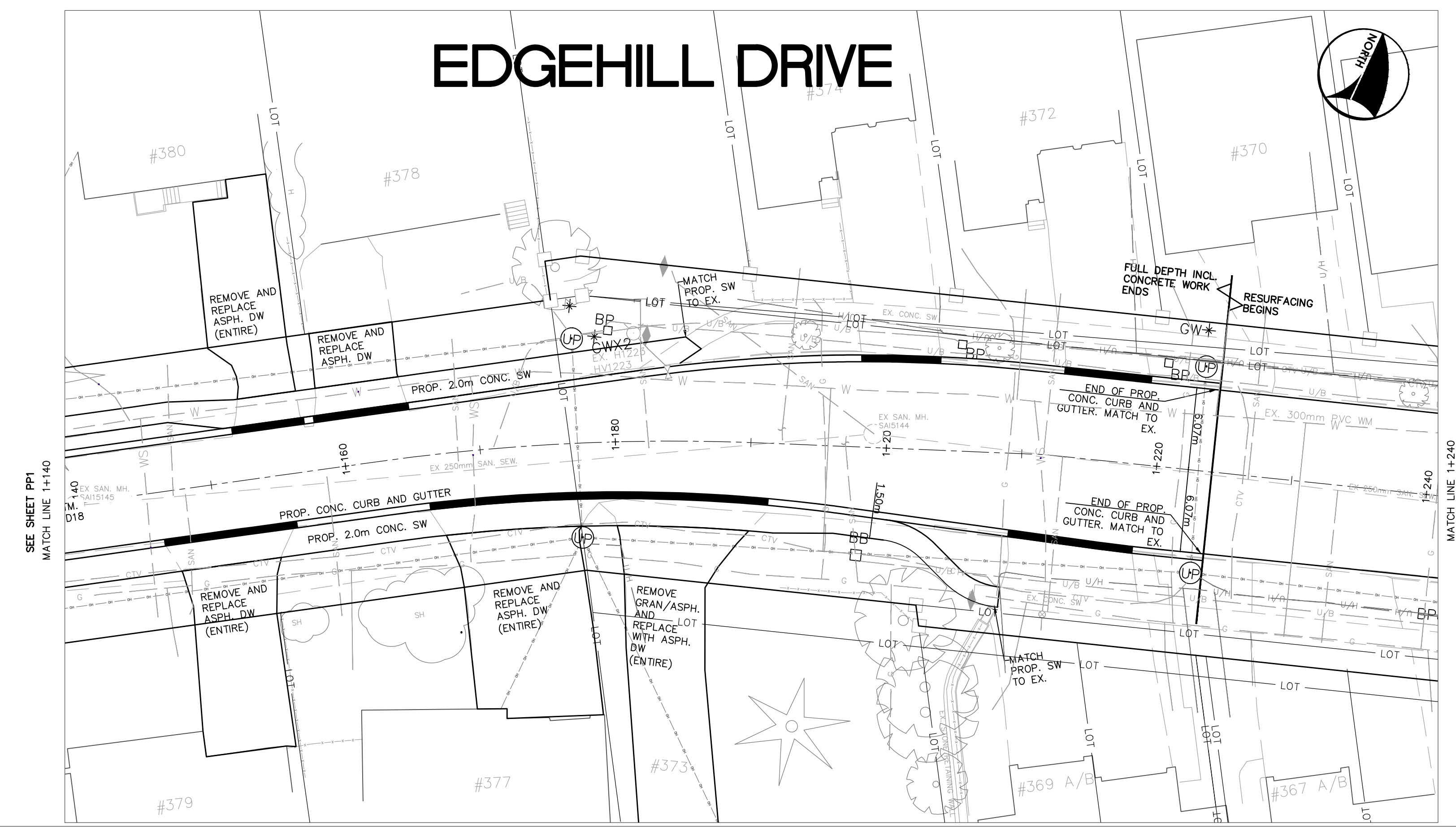
2025 SIDEWALK INFILL PROGRAM
PLAN AND PROFILE
EDGEHILL DR- PRINGLE DR TO FERNDALE DR N
STA 1+000 TO STA 1+140

Barrie
ENGINEERING DEPARTMENT

SCALE HOR. 1:250	VERT. 1:50	CONTRACT NO. 2026-129T
DESIGN M.C.	DRAWN M.C.	SHEET NO. PP1
REVIEWED J.V.	DATE 2026.04.14	

4/27/2026 1:48 PM MAGUIRE, CLAY BNS336-PP1.DWG

EDGEHILL DRIVE



PROP. GRADE	250.73	251.07	251.26	251.23
EXISTING GRADE	250.73	251.11	251.29	251.20
CHAINAGE	1+160	1+180	1+200	1+220

GENERAL NOTES
REFER TO CURRENT CITY OF BARRIE STANDARDS FOR APPLICABLE GENERAL NOTES.

BENCH MARKS
DISTANCE NOTE
DISTANCES SHOWN HEREON ARE GRID DISTANCES AND CAN BE CONVERTED TO GROUND DISTANCES BY MULTIPLYING BY THE COMBINED SCALE FACTOR OF 1.0003.
BEARING NOTE
BEARINGS HEREIN ARE GRID BEARINGS AND ARE DERIVED FROM CONTROL MONUMENTS 031910009 (N=4914801.348, E=601084.468) AND 010860410 (N=4913103.464, E=606688.620), AND ARE REFERRED TO THE CENTRAL MERIDIAN (81 DEGREES OF LONGITUDE) IN ZONE 17 AND ARE BASED ON NAD27 (76 ADJUSTMENT).
BENCH MARK V010865470
269.731 - BRASS TABLE SET IN CONCRETE HEADWALL OF UNDERGROUND STORM SEWER ENTRANCE ON WEST SIDE OF FERNDALE DRIVE NORTH, 1.0KM NORTH OF EDGEHILL DRIVE. TABLE IS SET HORIZONTALLY IN EAST FACE OF WESTERLY WALL, 15.0M WEST OF CENTRELINE OF FERNDALE DRIVE NORTH, 44CM SOUTH OF NORTHWEST END AND 37CM BELOW TOP OF CONCRETE WALL.
BENCH MARKS WILL BE FROM CITY OF BARRIE VERTICAL CONTROL NETWORK. INITIAL BENCH MARK TO BE OF 2nd ORDER ACCURACY.

NO.	REVISIONS	DATE	APPROVED
1.	90% DESIGN	APR/2026	J.V.

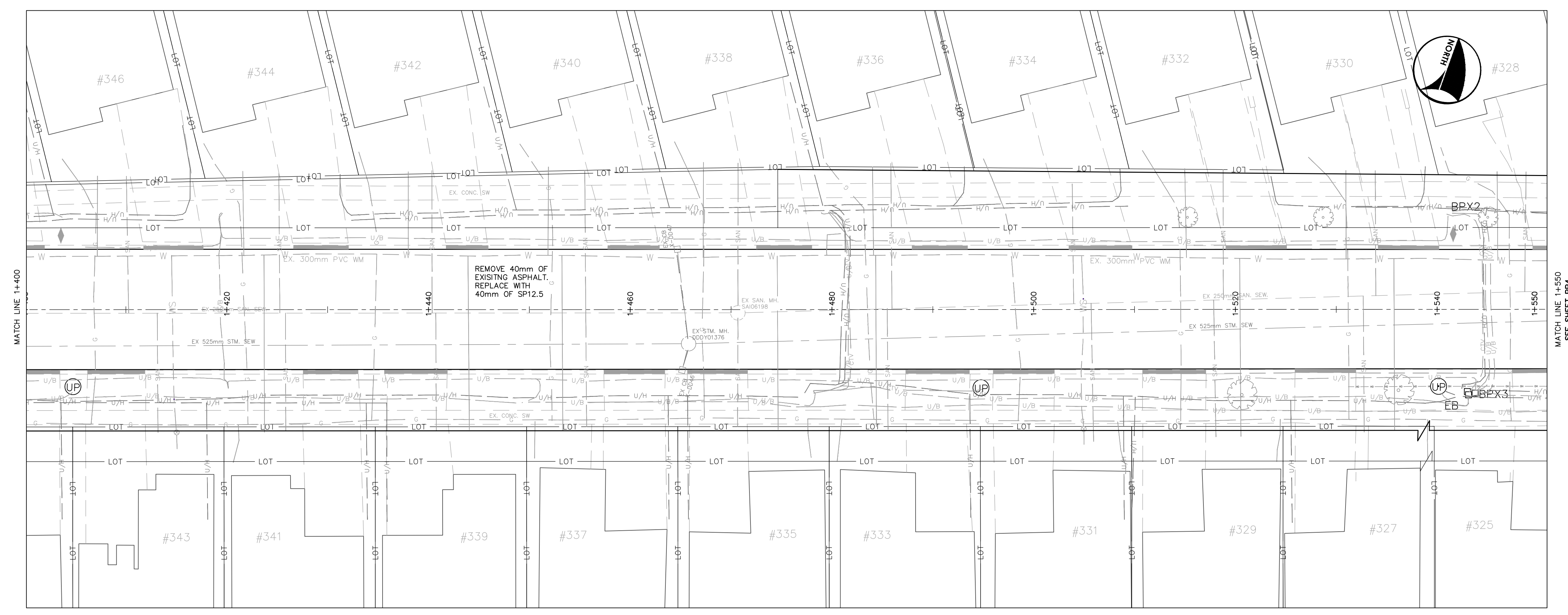
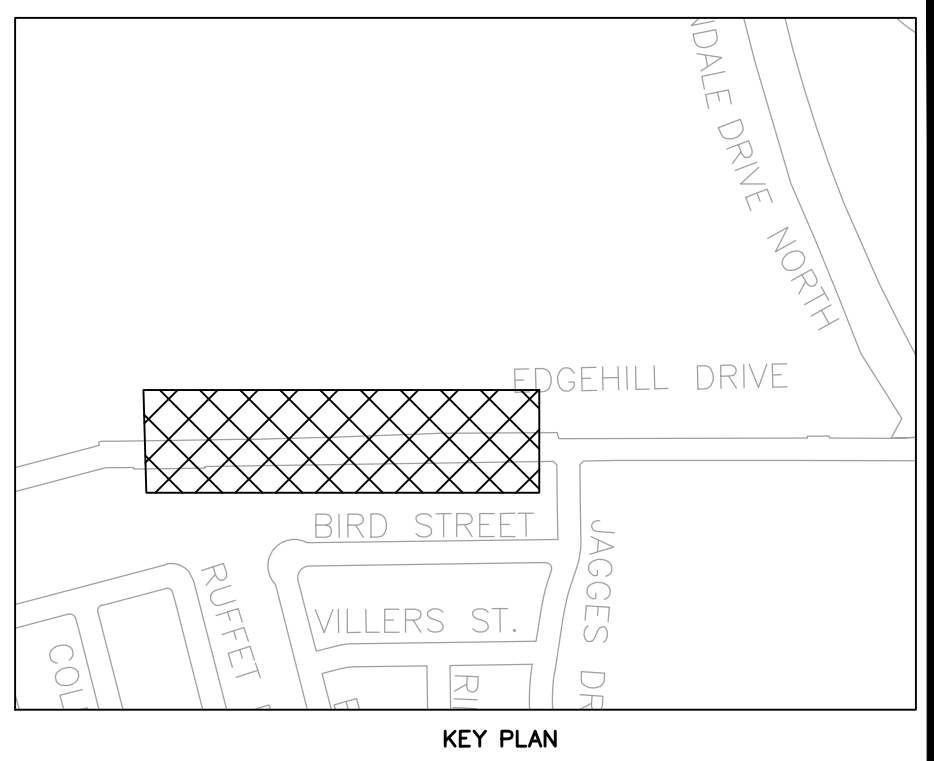
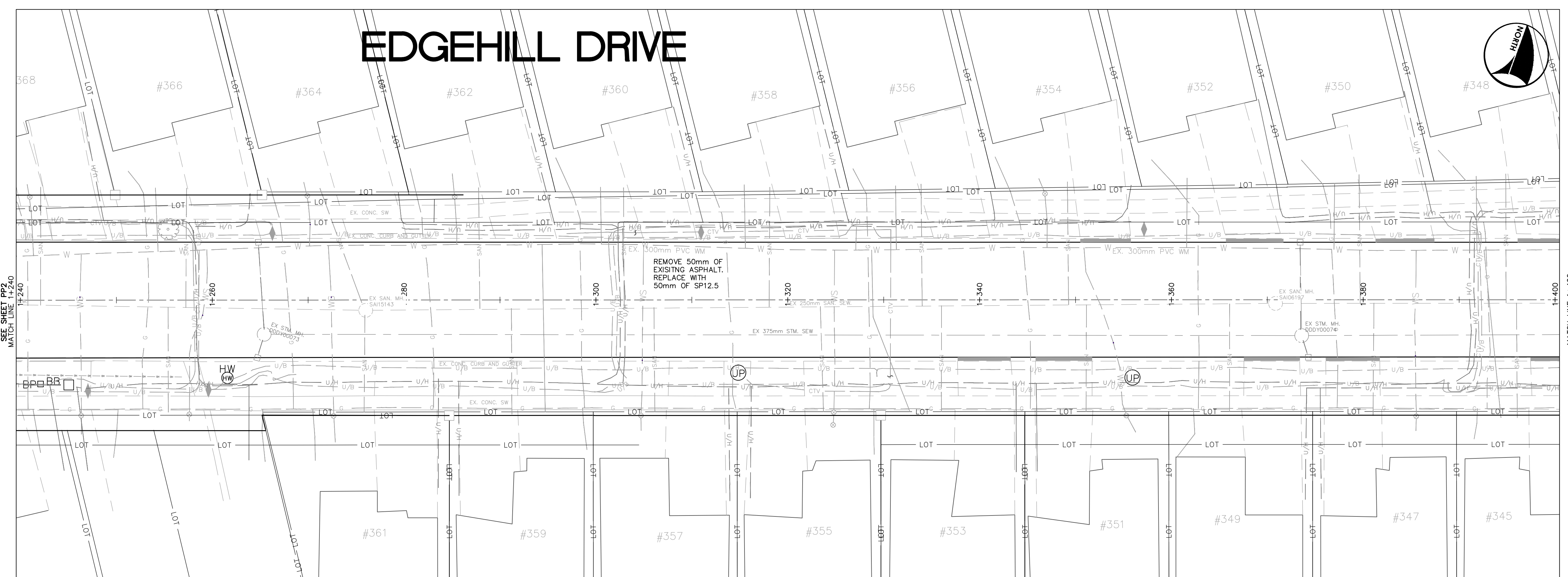
2025 SIDEWALK INFILL PROGRAM
PLAN AND PROFILE
EDGEHILL DR- PRINGLE DR TO FERNDALE DR N
STA 1+140 TO STA 1+240

Barrie
ENGINEERING DEPARTMENT

SCALE HOR. 1:250	VERT. 1:50	CONTRACT NO. 2026-129T
DESIGN M.C.	DRAWN M.C.	SHEET NO. PP2
REVIEWED J.V.	DATE 2026.04.14	

4/27/2026 1:00 PM MAGNARE CLAY EN536-PP2.DWG

EDGEHILL DRIVE



GENERAL NOTES
 REFER TO CURRENT CITY OF BARRIE STANDARDS FOR APPLICABLE GENERAL NOTES.

BENCH MARKS
 DISTANCES SHOWN HEREON ARE GRID DISTANCES AND CAN BE CONVERTED TO GROUND DISTANCES BY MULTIPLYING BY THE COMBINED SCALE FACTOR OF 1.0003.
BEARING NOTE
 BEARINGS HEREIN ARE GRID BEARINGS AND ARE DERIVED FROM CONTROL MONUMENTS 031910009 (N=4914801.348, E=601084.468) AND 010860410 (N=4913103.464, E=600668.620), AND ARE REFERRED TO THE CENTRAL MERIDIAN (61 DEGREES OF LONGITUDE) IN ZONE 17 AND ARE BASED ON NAD27 (76 ADJUSTMENT).
BENCH MARK V010865470
 269.731 - BRASS TABLE SET IN CONCRETE HEADWALL OF UNDERGROUND STORM SEWER ENTRANCE ON WEST SIDE OF FERNDALE DRIVE NORTH, 1.0KM NORTH OF EDGEHILL DRIVE. TABLE IS SET HORIZONTALLY IN EAST FACE OF WESTERLY WALL, 15.0M WEST OF CENTRELINE OF FERNDALE DRIVE NORTH, 44CM SOUTH OF NORTHWEST END AND 37CM BELOW TOP OF CONCRETE WALL.
 BENCH MARKS WILL BE FROM CITY OF BARRIE VERTICAL CONTROL NETWORK. INITIAL BENCH MARK TO BE OF 2nd ORDER ACCURACY.

NO.	REVISIONS	DATE	APPROVED
1.	90% DESIGN	APR/2026	J.V.

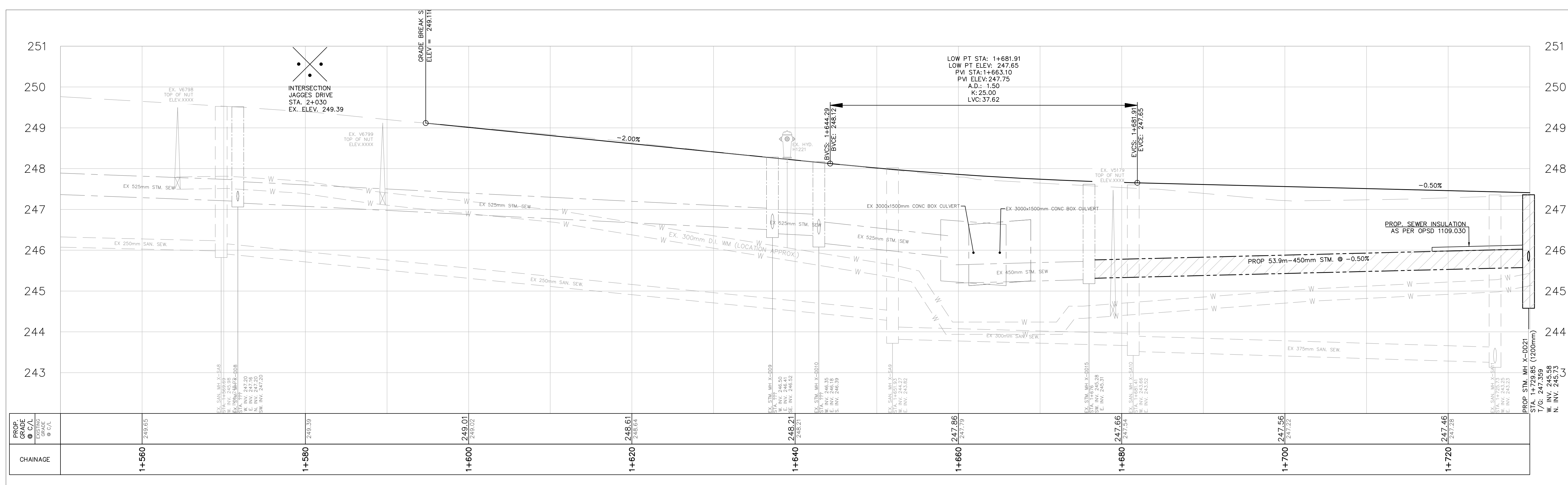
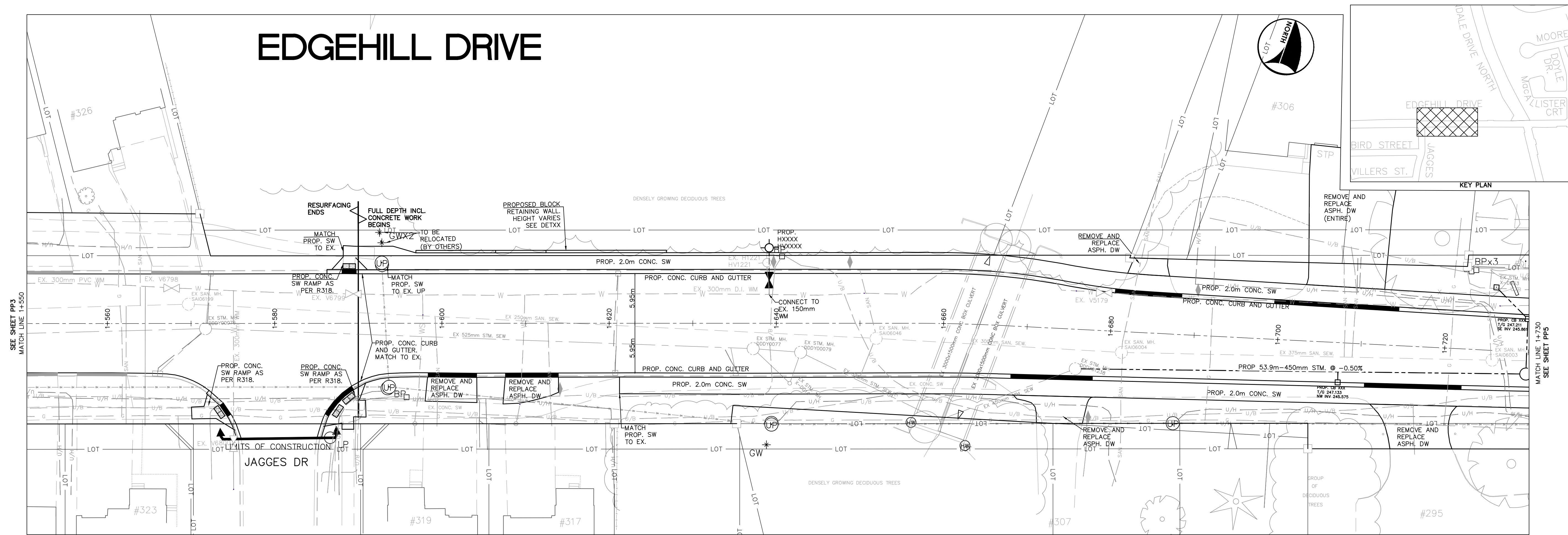
2025 SIDEWALK INFILL PROGRAM
 PLAN AND PROFILE
 EDGEHILL DR JAGGERS DR TO
 FERNDALE DR N
 STA 1+240 TO STA 1+550

Barrie
 ENGINEERING DEPARTMENT

SCALE HOR. 1:250	VERT. 1:50	CONTRACT NO. 2026-129T
DESIGN M.C.	DRAWN M.C.	SHEET NO. PP3
REVIEWED J.V.	DATE 2026.04.14	

4/27/2026 1:00 PM MAGUIRE, CLAY BNS36-PP3.DWG

EDGEHILL DRIVE



GENERAL NOTES
REFER TO CURRENT CITY OF BARRIE STANDARDS FOR APPLICABLE GENERAL NOTES.

BENCH MARKS
DISTANCE NOTE
DISTANCES SHOWN HEREON ARE GRID DISTANCES AND CAN BE CONVERTED TO GROUND DISTANCES BY MULTIPLYING BY THE COMBINED SCALE FACTOR OF 1.0003.
BEARING NOTE
BEARINGS HEREIN ARE GRID BEARINGS AND ARE DERIVED FROM CONTROL MONUMENTS 031910009 (N=4914801.348, E=601084.468) AND 01080410 (N=4913103.484, E=606688.620), AND ARE REFERRED TO THE CENTRAL MERIDIAN (81 DEGREES OF LONGITUDE) IN ZONE 17 AND ARE BASED ON NAD27 (76 ADJUSTMENT).
BENCH MARK V010865470
269.731 - BRASS TABLET SET IN CONCRETE HEADWALL OF UNDERGROUND STORM SEWER ENTRANCE ON WEST SIDE OF FERNDALE DRIVE NORTH, 1.0KM NORTH OF EDGEHILL DRIVE. TABLET IS SET HORIZONTALLY IN EAST FACE OF WESTERLY WALL, 15.0M WEST OF CENTRELINE OF FERNDALE DRIVE NORTH, 44CM SOUTH OF NORTHWEST END AND 37CM BELOW TOP OF CONCRETE WALL.
BENCH MARKS WILL BE FROM CITY OF BARRIE VERTICAL CONTROL NETWORK. INITIAL BENCH MARK TO BE OF 2nd ORDER ACCURACY.

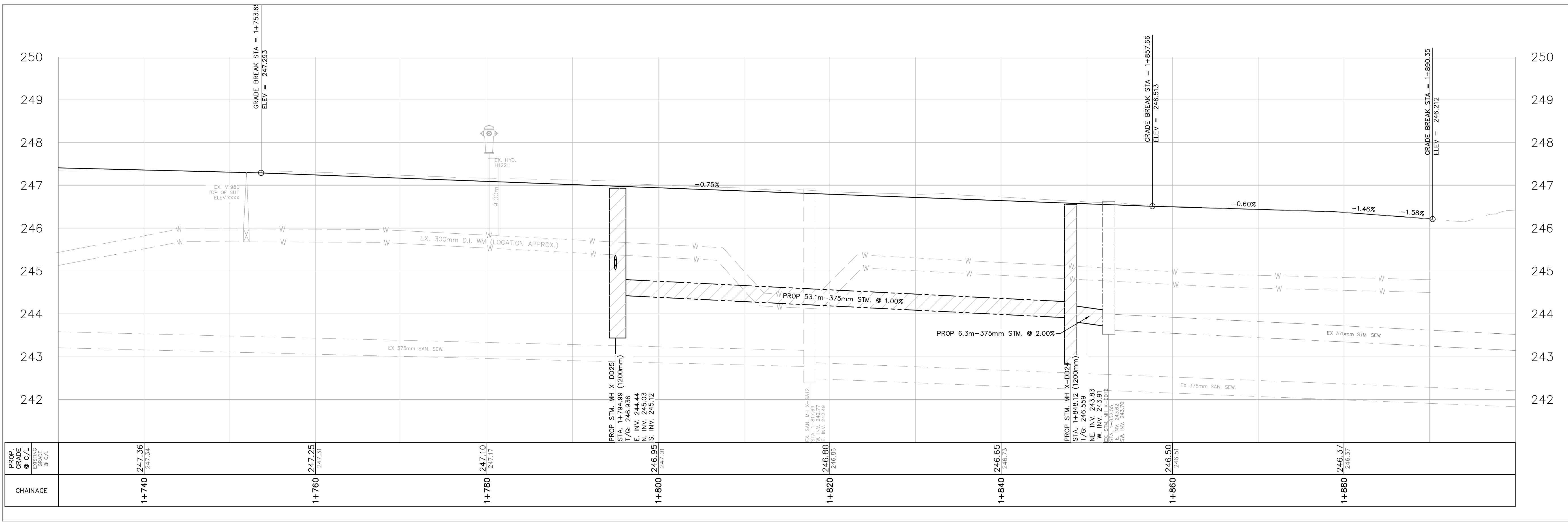
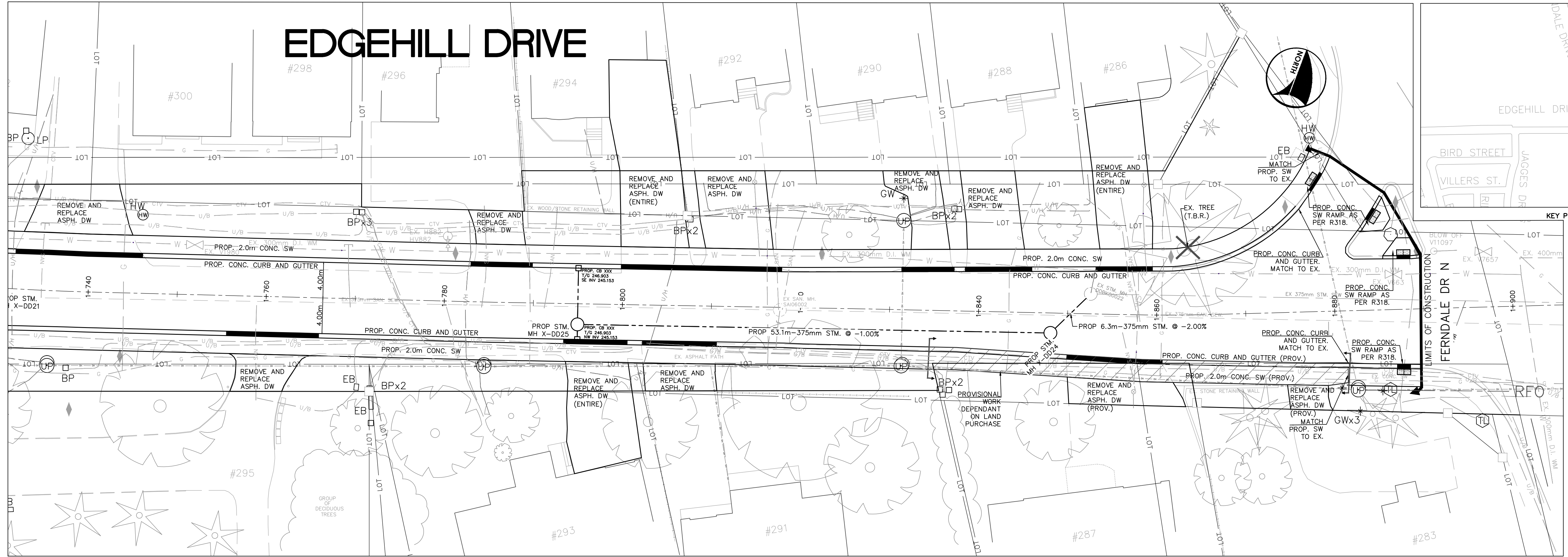
NO.	REVISIONS	DATE	APPROVED
1.	90% DESIGN	APR/2026	J.V.

2025 SIDEWALK INFILL PROGRAM
PLAN AND PROFILE
EDGEHILL DR PRINGLE DR TO FERNDALE DR N
STA 1+550 TO STA 1+730

Barrie
ENGINEERING DEPARTMENT

SCALE HOR. 1:250	VERT. 1:50	CONTRACT NO. 2026-129T
DESIGN M.C.	DRAWN M.C.	SHEET NO. PP4
REVIEWED J.V.	DATE 2026.04.14	

EDGEHILL DRIVE



GENERAL NOTES
 REFER TO CURRENT CITY OF BARRIE STANDARDS FOR APPLICABLE GENERAL NOTES.

BENCH MARKS
 DISTANCE NOTE
 DISTANCES SHOWN HEREON ARE GRID DISTANCES AND CAN BE CONVERTED TO GROUND DISTANCES BY MULTIPLYING BY THE COMBINED SCALE FACTOR OF 1.0003.
BEARING NOTE
 BEARINGS HEREIN ARE GRID BEARINGS AND ARE DERIVED FROM CONTROL MONUMENTS 031910009 (N=4914801.348, E=601584.468) AND 010860410 (N=4913103.464, E=600668.620), AND ARE REFERRED TO THE CENTRAL MERIDIAN (81 DEGREES OF LONGITUDE) IN ZONE 17 AND ARE BASED ON NAD27 (76 ADJUSTMENT).
BENCH MARK V010865470
 269.731 - BRASS TABLE SET IN CONCRETE HEADWALL OF UNDERGROUND STORM SEWER ENTRANCE ON WEST SIDE OF FERNDALE DRIVE NORTH, 1.0KM NORTH OF EDGEHILL DRIVE. TABLE IS SET HORIZONTALLY IN EAST FACE OF WESTERLY WALL, 15.0M WEST OF CENTRELINE OF FERNDALE DRIVE NORTH, 44CM SOUTH OF NORTHWEST END AND 37CM BELOW TOP OF CONCRETE WALL.
 BENCH MARKS WILL BE FROM CITY OF BARRIE VERTICAL CONTROL NETWORK. INITIAL BENCH MARK TO BE OF 2nd ORDER ACCURACY.

NO.	REVISIONS	DATE	APPROVED
1.	90% DESIGN	APR/2026	J.V.

2025 SIDEWALK INFILL PROGRAM
 PLAN AND PROFILE
 EDGEHILL DR PRINGLE DR TO FERNDALE DR N
 STA 1+730 TO STA 1+900

Barrie
 ENGINEERING DEPARTMENT

SCALE HOR. 1:250	VERT. 1:50	CONTRACT NO. 2026-129T
DESIGN M.C.	DRAWN M.C.	SHEET NO. PP5
REVIEWED J.V.	DATE 2026.04.14	

4/27/2026 1:32 PM MAGUIRE, CLAY INT-536-PP-2186