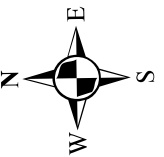
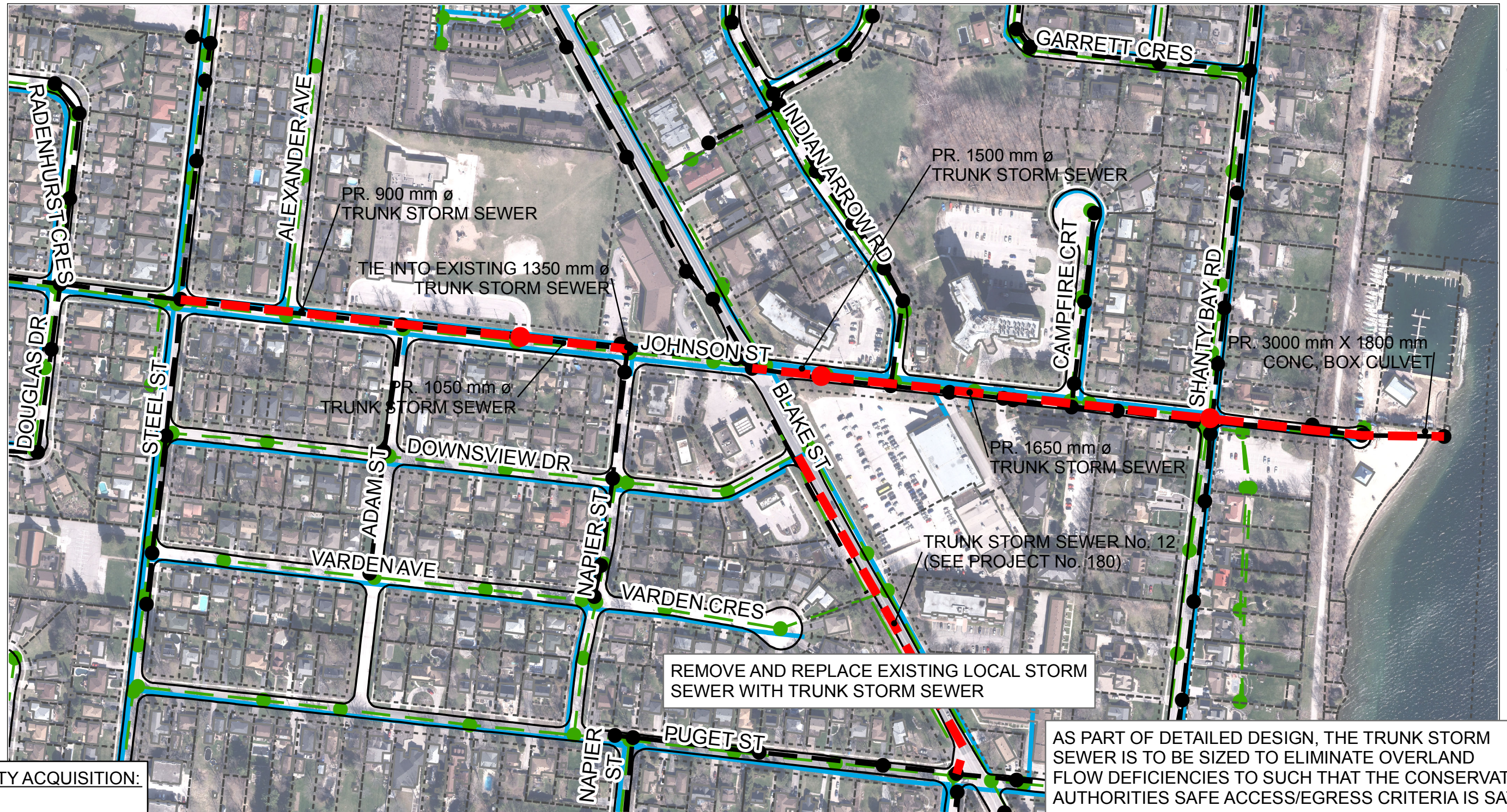


**Appendix N:
Final Preferred Solutions
Conceptual Designs – Johnson
Drainage Area**



PROPERTY ACQUISITION:
NONE



Disclaimer
The information contained in this drawing is solely for the use of the Corporation of the City of Barrie for the purpose for which it has been prepared and Tatham Engineering Ltd. undertakes no duty or accepts any responsibility to any third party who may rely upon this drawing. This drawing may not be used for any purpose other than that provided in the Contract between the Corporation of the City of Barrie and Tatham Engineering Ltd. nor may any detail or element of this drawing be removed, reproduced, electronically stored or transmitted in any form with the express written consent of the Corporation of the City of Barrie.

LEGEND

- EX. WATERCOURSE
- EX. STORM MAINTENANCE HOLE
- EX. STORM SEWER
- EX. PROPERTY LINE
- PROPERTY ACQUISITION
- TRUNK STORM SEWER (PREFERRED ROUTE)
- TRUNK STORM SEWER (ALTERNATIVE ROUTE)
- EX. SANITARY MAINTENANCE HOLE
- EX. SANITARY SEWER
- EX. WATERMAIN

DRAINAGE MASTER PLAN **FINAL PREFERRED ALTERNATIVE SOLUTION**

PROJECT No.159
TRUNK STORM SEWER No. 8
JOHNSON DRAINAGE AREA
SCALE = 1:3,000

DATE: MARCH 2019