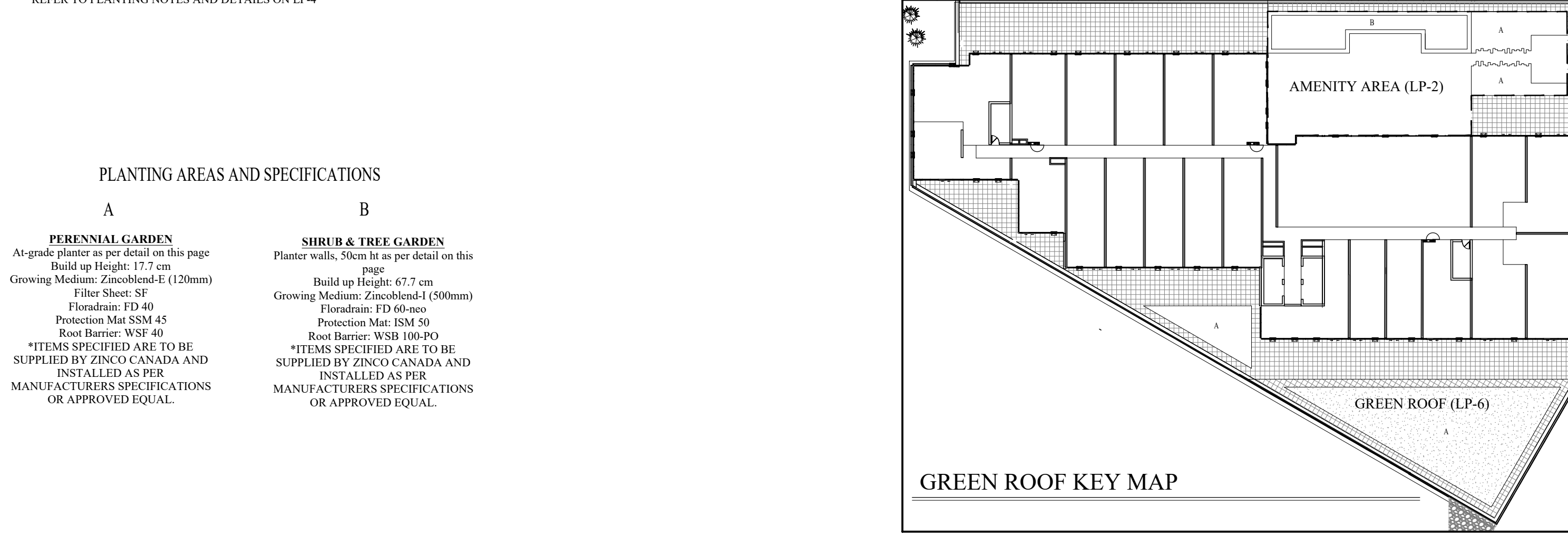


**PLANT LIST**  
REFER TO PLANTING NOTES AND DETAILS ON LP-4

CODE	QNTY	COMMON NAME	BOTANICAL NAME	SIZE	FORM	SPACING	DETAIL	NOTES
Sed	313 m2	STONECROP VEGETATION	Sedum (Mixed species)	5th floor LP-2&LP-6	1 gal	plugs	20/m2	n/a Full form / Container grown



**MLB720BL-W BENCH**

**MATERIALS:** Bench ends are made from solid cast aluminum. The seat employs 1.38" x 1.5" (3.5 cm x 3.8 cm) and 1.38" x 4.00" (3.5 cm x 10.2 cm) Ipe slats.

**FINISH:** The Maglin Powdercoat System provides a durable finish on all metal surfaces.

**INSTALLATION:** The bench is delivered pre-assembled. Mounting Brackets can be configured for proposed mounting surface.

**TO SPECIFY:** Select MLB720BL-W  
Choose:  
- Powdercoat Color

**OPTIONS:** Plaque  
- Skate Deterrent

**DIMENSIONS:**  
Height: 3.63" (9.3cm)  
Length: 70" (177.7cm)  
Width: 21.25" (54.0cm)  
Weight: 73.30lbs (33.2kg)

**MAGLIN**  
All drawings, specifications, design and details on this page remain the property of Maglin Site Furniture Inc. and may not be used without Maglin authorization. Details and specifications may vary due to continuing improvements of our products.

T 800-716-8806  
F 877-560-9283  
WWW.MAGLIN.COM  
SALES@MAGLIN.COM



**AT GRADE PLANTER BED WITH FLORADRAIN FD 40**

- 1 Stainless Steel or Aluminum L-profile ZinCo KL100/120.
- 2 Paver (Refer to LP-7 for amenity terrace pavers and arch. drawings for pavers in private terraces and walkways)
- 3 Bedding material (Clear crushed 1/4" HPB)
- 4 ZinCo Floradrain® FD 40 filled with crushed aggregate
- 5 System build-up
  - Roof surface
  - Waterproofing membrane
  - ZinCo root barrier WSB 40
  - ZinCo protection mat SSM45
  - Drain and water storage element ZinCo Floradrain® FD 40
  - ZinCo filter sheet SF
  - Growing medium ZinCo Blend-E, Depth 120 mm
  - Plant material - Sedum, Perennials & Grasses

**PLANTING 'A' DETAIL**

NOTE: ITEMS SPECIFIED ARE TO BE SUPPLIED BY ZINCO CANADA AND INSTALLED AS PER MANUFACTURERS SPECIFICATIONS OR APPROVED EQUAL.

ZINCO CANADA: 905-690-1661

**SHOP DRAWINGS TO BE PROVIDED BY CONTRACTOR FOR FINAL APPROVAL**

**CONCRETE PLANTER WALL WITH FLORADRAIN FD 60**

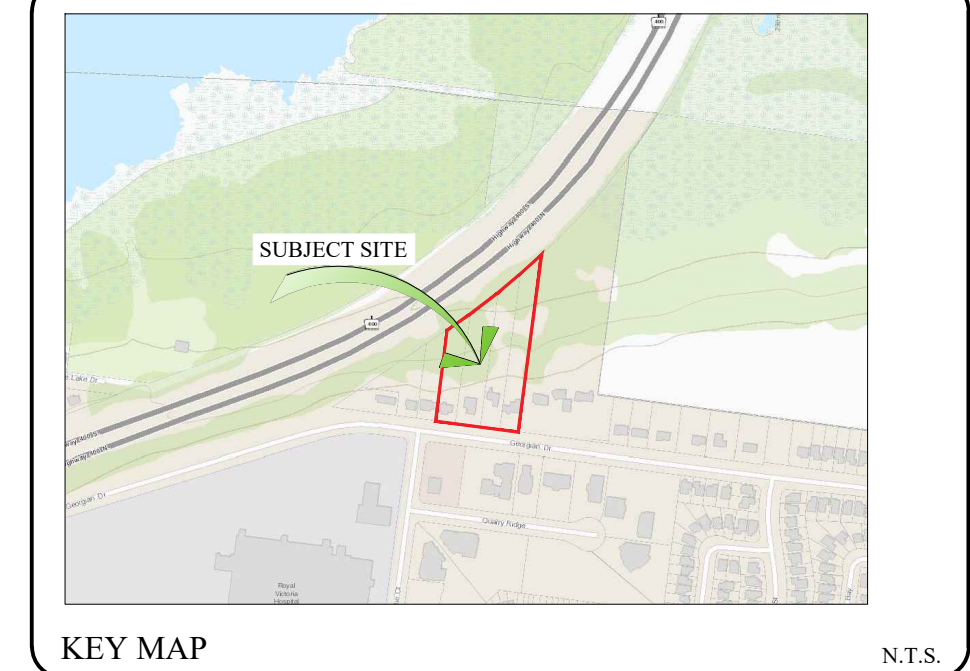
- 1 Hard surfacing
- 2 High performance bedding (HPB) minimum depth 50 mm
- 3 Drainage element ZinCo Floradrain FD60-Neo
- 4 ZinCo protection mat ISM50
- 5 ZinCo root barrier WSB 100 - extend 500 mm past the planter
- 6 Roof construction with waterproofing membrane
- 7 Paired in place concrete Footings (Size and thickness to be determined by engineer)
- 8 Paired in place concrete Walls (See layout on this page)
- 9 Plant material: Small trees, shrubs & perennials
- 10 Filter sheet ZinCo TG
- 11 Growing Medium ZinCoBlend-I, Depth: 500 mm

**PLANTING 'B' DETAIL**

NOTE: ITEMS SPECIFIED ARE TO BE SUPPLIED BY ZINCO CANADA AND INSTALLED AS PER MANUFACTURERS SPECIFICATIONS OR APPROVED EQUAL.

ZINCO CANADA: 905-690-1661

**SHOP DRAWINGS TO BE PROVIDED BY CONTRACTOR FOR FINAL APPROVAL**



**GENERAL NOTES**

CONTRACTOR IS RESPONSIBLE FOR ALL LOCATES INCLUDING ALL UNDERGROUND SERVICES PRIOR TO ANY EXCAVATION OR INSTALLATIONS. THE CONTRACTOR IS REQUIRED TO NOTIFY THE VARIOUS UTILITY COMPANIES 48 HOURS PRIOR TO THE COMMENCEMENT OF ANY WORK.

ANY ACCOMPANYING DOCUMENTATION RELATING TO THE LANDSCAPE PLAN AND/OR PRESERVATION PLAN SUCH AS TENDER DOCUMENTS AND CHANGE NOTICES ARE TO BE ENDORSED BY J.D.B. ASSOCIATES LIMITED PRIOR TO THE BEGINNING OF ANY SITE WORKS. IN THE EVENT THAT OF A DISCREPANCY THE DRAWING SHALL BE ASSUMED CORRECT.

IT IS THE RESPONSIBILITY OF THE PERSON OR PERSONS RESPONSIBLE FOR THE CONSTRUCTED WORKS TO NOTIFY THE LANDSCAPE ARCHITECT WHEN PREPARED FOR ANY REQUIRED INSPECTIONS AND SIGN OFFS.

SCHEDULED MEETINGS SHALL TAKE PLACE AT THE CLOSEST MUTUALLY CONVENIENT TIME.

No.	REVISION	DATE	APRVD.
1.	CLIENT REVIEW	Nov. 19, 2018	MC
2.	SUBMISSION FOR REZONING	Apr. 1, 2019	MC
3.	SUBMISSION FOR SITE PLAN APPROVAL	Oct. 11, 2019	ST
4.	SECOND SUBMISSION	Apr. 9, 2020	MC
5.	RE-ISSUED FOR SUBMISSION	Apr. 15, 2021	MC

ALL DRAWINGS AND SPECIFICATIONS ARE INSTRUMENTS OF SERVICE AND ARE THE PROPERTY OF JDB ASSOCIATES LIMITED. DRAWINGS ARE NOT TO BE MODIFIED AND/OR REPRODUCED WITHOUT THE WRITTEN CONSENT OF JDB ASSOCIATES LIMITED. REPRODUCTION OF DRAWINGS IN ANY FORM WITHOUT THE CONSENT OF JDB ASSOCIATES LIMITED VOIDS THE DRAWING AT WHICH TIME JDB ASSOCIATES LIMITED ACCEPTS NO LIABILITY FOR THE DRAWING CONTENT OR WORKS RESULTING FROM SAID REPRODUCTION. DRAWINGS MAY BE REPRODUCED BY MUNICIPAL AND GOVERNMENT AGENCIES RESPONSIBLE FOR APPROVALS FOR THEIR OWN USE. JDB ASSOCIATES RESERVES THE RIGHT TO WITHDRAW ANY DRAWING(S) FROM GOVERNMENT OR MUNICIPAL AGENCIES WHETHER APPROVED OR NOT IN THE EVENT THAT ACCOUNTS ARE NOT SETTLED OR REMAIN OUTSTANDING.

IT IS THE RESPONSIBILITY OF THE CONTRACTOR TO VERIFY ALL DIMENSIONS ON THE SITE AND REPORT ANY DISCREPANCIES OR VARIATIONS FROM THE SUPPLIED INFORMATION TO THE LANDSCAPE ARCHITECT WITH THE PROJECT. JDB ASSOCIATES LIMITED IS NOT RESPONSIBLE FOR THE ACCURACY OF SURVEY, ARCHITECTURAL, MECHANICAL, ENGINEERING OR ELECTRICAL INFORMATION SHOWN ON THE DRAWING. FOR FURTHER INFORMATION REFER TO APPROPRIATE SURVEY, ARCHITECTURAL, MECHANICAL, ENGINEERING OR ELECTRICAL DRAWINGS PRIOR TO PROCEEDING WITH ANY WORKS.

THIS DRAWING IS NOT TO BE SCALED.

BASE INFORMATION PROVIDED BY:  
A & A ASSOCIATES ARCHITECTS INC.  
6 CARLAW AVE., SUITE 205B  
TORONTO, ONTARIO M4M 2R5  
PHONE: 416-466-0100

BASE PLAN REVISED: APRIL 2021

ACCEPTED BY

DATE

LANDSCAPE ARCHITECTS STAMP  
JDB ASSOCIATES LTD.

**JDB ASSOCIATES LTD.**  
Urban Designers  
Landscape Architects  
Arborists  
274 Burlton Ave., Suite 1201  
Barrie, Ontario  
L4N 5W4  
Fax: 705-722-5660  
Tel: 705-722-6278

**THE GEORGIAN APARTMENTS**  
290, 294, 298, & 302  
Georgian Drive,  
City of Barrie

**FIFTH FLOOR PLANTING DETAILS**

SCALE:	DATE:	DESIGNED BY:	REVIEWED BY:
1:200	April 2021	S.T.M.C.	NB
CITY FILE No.	OUR FILE REF. #	DRAWN BY:	LP-6
	1191A-18	S.T.M.C.	

all joints to be sealed with waterproof stabilizer sealant; refer to manufacturer's specifications