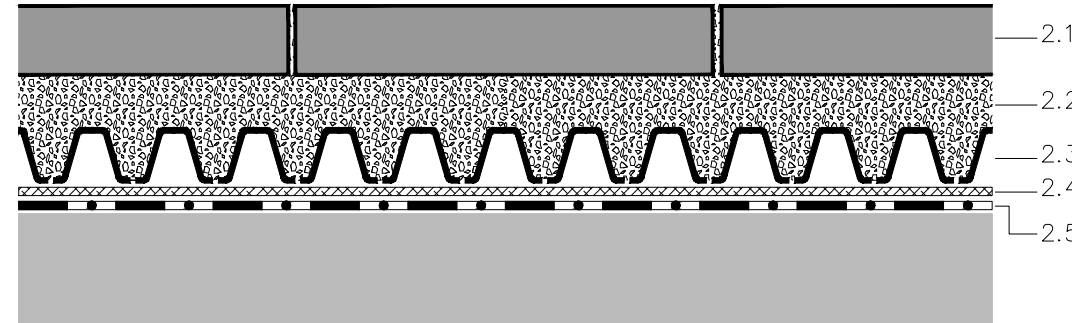


CONCRETE PAVERS BY 'OAKS LANDSCAPE PRODUCTS.' OR APPROVED SIMILAR PRODUCT. PROVIDED BY BRAMPTON BRICK
225 Wanless Drive, Brampton, ON, L7A 1E9
905-840-1011

Molina 60mm Paver Series
Colour: Cloudburst
Size: 300x300, 300x450, 300x600
Pattern: Running Bond

- 2.1 Concrete paving slab, thickness: 60 mm
- 2.2 1" Clear crushed aggregate (HPB), min. depth: 70 mm
- 2.3 Drainage element ZinCo Floradrain® FD 40
- 2.4 Protection mat ZinCo SSM 45
- 2.5 Stable roof construction with suitable waterproofing



Notes:
This detail is particular for the ZinCo Green Roof system to use. The roof construction and the waterproofing are not specified as this can vary.

AMENITY PAVING DETAIL

Quantum LAF Loveseat

HS8102-K
SKU: HS8102-K
Dimensions: 65" W x 35" D x 33" H



Quantum Corner Unit

HS8105-K
SKU: HS8105-K
Dimensions: 35" W x 35" D x 33" H



Quantum RAF Loveseat

HS8103-K
SKU: HS8103-K
Dimensions: 65" W x 35" D x 33" H



Kingsley Bate Amalfi Coffee Table

HS-KINGSLEYTEAK-AM41
SKU: HS-KINGSLEYTEAK-AM41
Dimensions: 40" SQ. x 17" H



CORNER SECTIONAL AND COFFEE TABLE

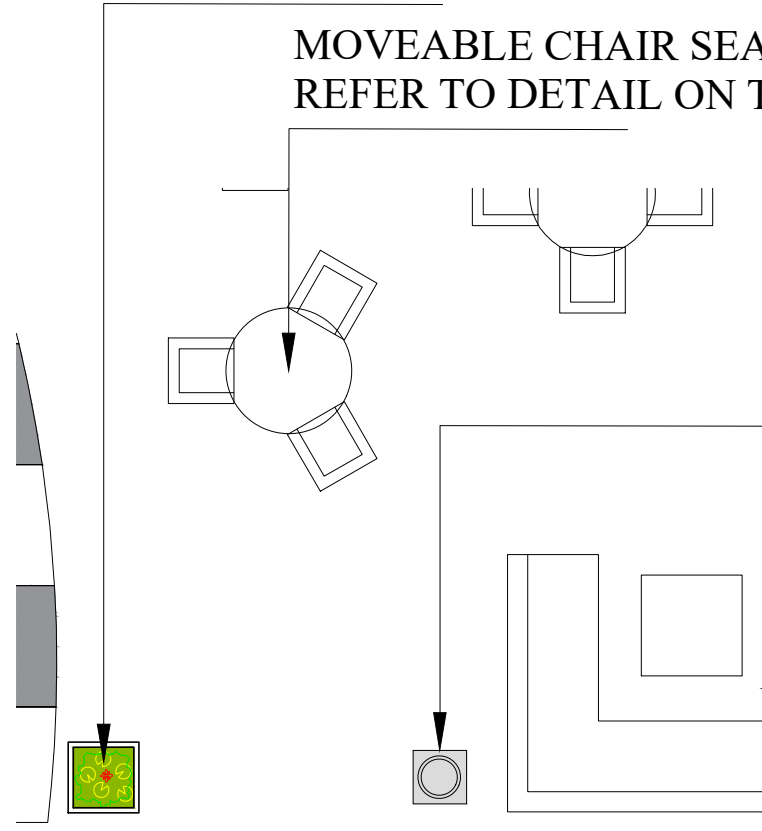
QUANTUM SECTIONAL COUCH PROVIDED BY HAUSER. 519-747-1138

ANNUAL PLANTER. REFER TO DETAIL ON THIS PAGE

MOVEABLE CHAIR SEATING. REFER TO DETAIL ON THIS PAGE

WASTE RECEPTACLE. REFER TO LP-5

CORNER SECTIONAL AND COFFEE TABLE. REFER TO DETAIL ON THIS PAGE



AMENITY FURNITURE LAYOUT

Square Galvanized Steel Planter

HSVK501-SM
SKU: HSVK501
Dimensions: Large - 27" Square



SQUARE PLANTER PROVIDED BY HAUSER. 519-747-1138

ANNUAL PLANTER

Kingsley Bate Chelsea Arm Chair

HSKB-C015
SKU: HSKB-C015
Dimensions: 23.5" W x 24.5" D x 36" H



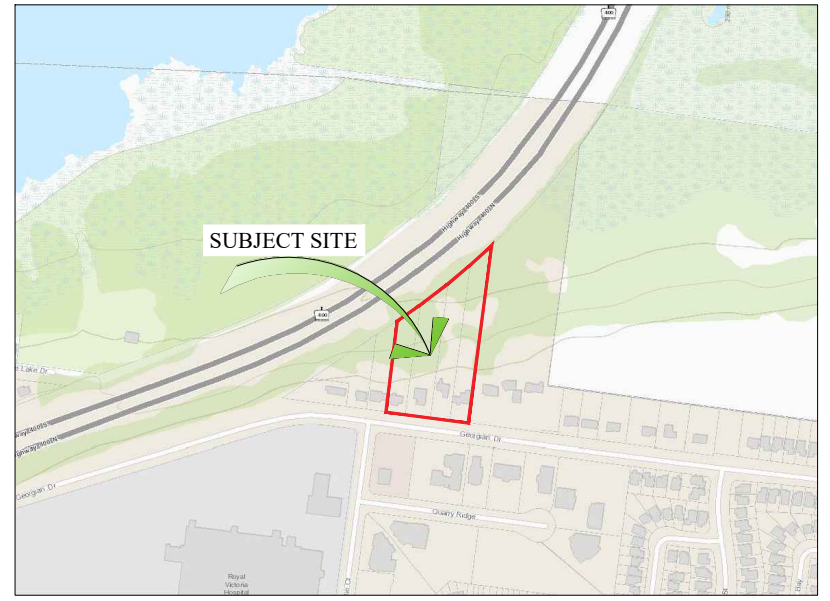
Kingsley Bate Amalfi 50" Dining Table

HS-KB-AM50
SKU: HS-KB-AM50
Dimensions: 50" Dia. x 29" H



KINGSLEY BATE TABLE AND CHAIR SET PROVIDED BY HAUSER. 519-747-1138

MOVEABLE CHAIR SEATING



KEY MAP N.T.S.

GENERAL NOTES

CONTRACTOR IS RESPONSIBLE FOR ALL LOCATES INCLUDING ALL UNDERGROUND SERVICES PRIOR TO ANY EXCAVATION OR INSTALLATIONS. THE CONTRACTOR IS REQUIRED TO NOTIFY THE VARIOUS UTILITY COMPANIES 48 HOURS PRIOR TO THE COMMENCEMENT OF ANY WORK.

ANY ACCOMPANYING DOCUMENTATION RELATING TO THE LANDSCAPE PLAN AND/OR PRESERVATION PLAN SUCH AS TENDER DOCUMENTS AND CHANGE NOTICES ARE TO BE ENDORSED BY J.D.B. ASSOCIATES LIMITED PRIOR TO THE BEGINNING OF ANY SITE WORKS. IN THE EVENT THAT OF A DISCREPANCY THE DRAWING SHALL BE ASSUMED CORRECT.

IT IS THE RESPONSIBILITY OF THE PERSON OR PERSONS RESPONSIBLE FOR THE CONSTRUCTED WORKS TO NOTIFY THE LANDSCAPE ARCHITECT WHEN PREPARED FOR ANY REQUIRED INSPECTIONS AND SIGN OFFS.

SCHEDULED MEETINGS SHALL TAKE PLACE AT THE CLOSEST MUTUALLY CONVENIENT TIME.

No.	REVISION	DATE	APRVD.
1.	CLIENT REVIEW	Nov. 19, 2018	MC
2.	SUBMISSION FOR REZONING	Apr. 1, 2019	MC
3.	SUBMISSION FOR SITE PLAN APPROVAL	Oct. 11, 2019	ST
4.	SECOND SUBMISSION	Apr. 9, 2020	MC
5.	RE-ISSUED FOR SUBMISSION	Apr. 15, 2021	MC

ALL DRAWINGS AND SPECIFICATIONS ARE INSTRUMENTS OF SERVICE AND ARE THE PROPERTY OF JDB ASSOCIATES LIMITED. DRAWINGS ARE NOT TO BE MODIFIED AND/OR REPRODUCED WITHOUT THE WRITTEN CONSENT OF JDB ASSOCIATES LIMITED. REPRODUCTION OF DRAWINGS IN ANY FORM WITHOUT THE CONSENT OF JDB ASSOCIATES LIMITED voids the drawing at which TIME JDB ASSOCIATES LIMITED ACCEPTS NO LIABILITY FOR THE DRAWING CONTENT OR WORKS RESULTING FROM SAID REPRODUCTION. DRAWINGS MAY BE REPRODUCED BY MUNICIPAL AND GOVERNMENT AGENCIES RESPONSIBLE FOR APPROVALS FOR THEIR OWN USE. JDB ASSOCIATES RESERVES THE RIGHT TO WITHDRAW ANY DRAWING(S) FROM GOVERNMENT OR MUNICIPAL AGENCIES WHETHER APPROVED OR NOT IN THE EVENT THAT ACCOUNTS ARE NOT SETTLED OR REMAIN OUTSTANDING.

IT IS THE RESPONSIBILITY OF THE CONTRACTOR TO VERIFY ALL DIMENSIONS ON THE SITE AND REPORT ANY DISCREPANCIES OR VARIATIONS FROM THE SUPPLIED INFORMATION TO THE LANDSCAPE ARCHITECT WITH THE PROJECT. JDB ASSOCIATES LIMITED IS NOT RESPONSIBLE FOR THE ACCURACY OF SURVEY, ARCHITECTURAL, MECHANICAL, ENGINEERING OR ELECTRICAL INFORMATION SHOWN ON THE DRAWING. FOR FURTHER INFORMATION REFER TO APPROPRIATE SURVEY, ARCHITECTURAL, MECHANICAL, ENGINEERING OR ELECTRICAL DRAWINGS PRIOR TO PROCEEDING WITH ANY WORKS.

THIS DRAWING IS NOT TO BE SCALED.

BASE INFORMATION PROVIDED BY:
A & A ASSOCIATES ARCHITECTS INC.
6 CARLAW AVE. SUITE 205B
TORONTO, ONTARIO M4M 2R5
PHONE: 416-466-0100

BASE PLAN REVISED: APRIL 2021

ACCEPTED BY

LANDSCAPE ARCHITECTS STAMP

JDB ASSOCIATES LTD.

Urban Designers
Landscape Architects
Arborists

274 Burton Ave., Suite 1201
Barrie, Ontario
L4N 5W4

Fax: 705-722-5660
Tel: 705-722-6278

THE GEORGIAN APARTMENTS

290, 294, 298, & 302
Georgian Drive,
City of Barrie

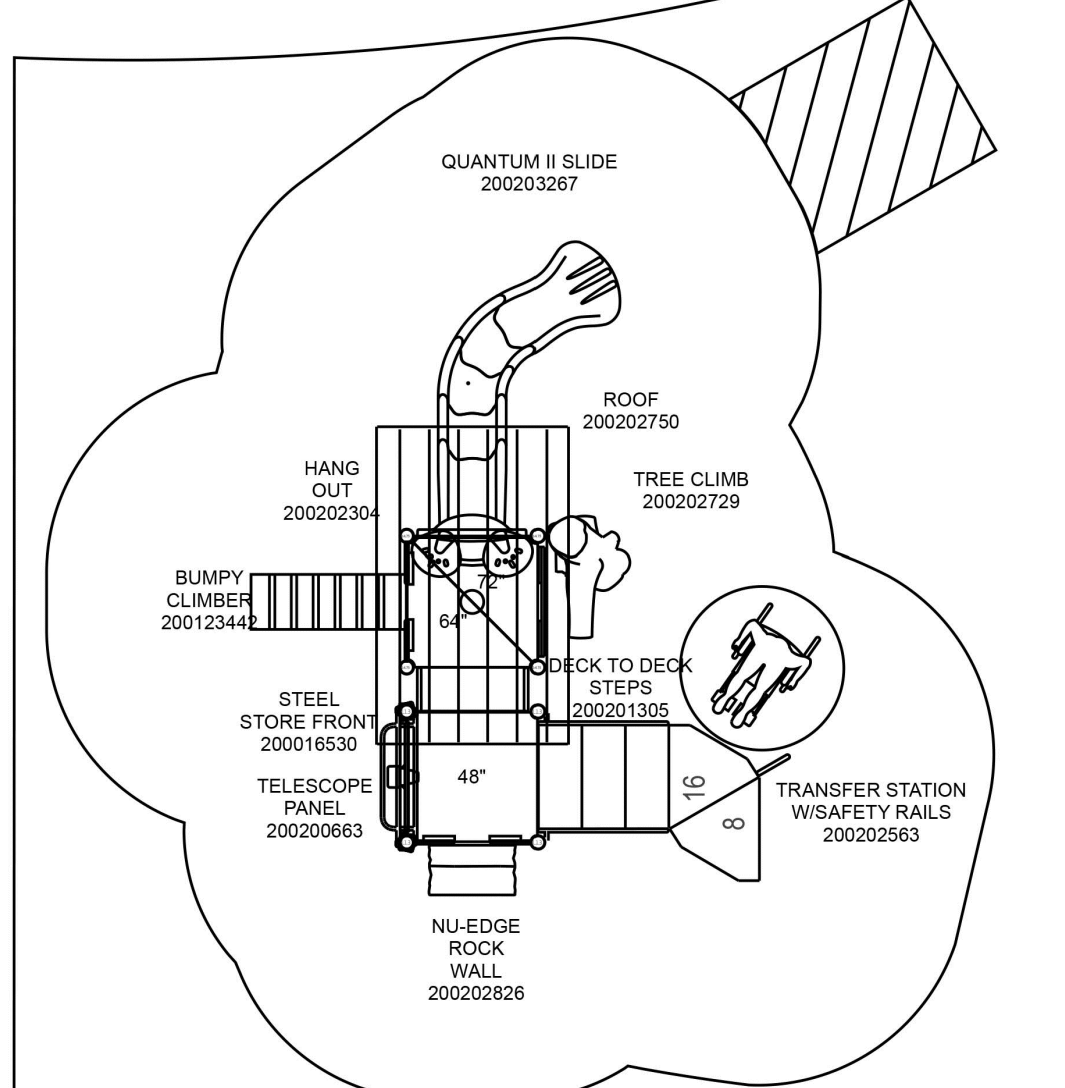
AMENITY PLAYGROUND/PAVING DETAILS

SCALE:	DATE:	DESIGNED BY:	REVIEWED BY:
N.T.S.	April 2021	ST, M.C.	NB
CITY FILE No.	OUR FILE REF. #	DRAWN BY:	LP-7
	1191A-18	ST, M.C.	

General Notes:

- Age Group
 0-5 yrs 6-12 yrs 13-17 yrs 18+ yrs
1. No. encroachment zone - that additional area adjacent to the protective surfacing zone intended to allow pedestrian traffic near the play equipment to use while minimizing the risk of injury to pedestrians, CSA 2634
 2. Although a particular ground level event, the actual playground may be in compliance when considering the proposed Access Board Regulation in regard to the appropriate number of ground level events.
 3. All play components are installed from top of ground cover.
 4. Fall absorbing ground cover is required under and around all play equipment.
 5. The minimum recommended fall zone around the entire play structure is shown. The zone is to be free of all tripping or collision hazards (i.e. roots, rocks, border materials, etc.).
 6. All post heights are identified by text showing the post height, i.e. 56 represents a 56 inch post.
 7. All equipment may be appropriate for all children. Supervision is required.

AGE GROUP	ELEVATED PLAY ACTIVITIES - TOTAL #	ELEVATED PLAY ACTIVITIES ACCESSIBLE BY TRANSFER	REGO #
0-5 yrs	0	0	0
6-12 yrs	2	2	2
13-17 yrs	0	0	0
18+ yrs	0	0	0



Project:
c/o John D Bell and Associates
Barrie, ON
LTCPS rep:
Jamie Sass
PlayPower
(519) 757-2767

Ground Space: 16'-6" x 20'-6"
Protective Area: 29'-0" x 32'-6"

Drawn by: Jamie Sass
Date: 3/25/2019
DWG Name: UNKN8_43549565341

LTCPS - Farmington
878 East Highway 60
Monett, Missouri 65708
Voice: 1-800-325-8828
Fax: 417-354-2273

PROPOSED PLAYGROUND PLAN (Typ.) PROVIDED BY PLAYPOWER LTD.

Playground Layout Compliance: CSA-Z614 - Playground Equipment for Public Use.



The play components identified in this plan are IPMA certified. The use and layout of these components conform to the requirements of CSA-Z614.

LEED points for this structure: 1



PLAYGROUND DETAIL