

THE OUTDOOR GREATROOM CO. 12x16 REDWOOD SONOMA WOOD PERGOLA PROVIDED BY THE DECK STORE. 905-629-8082 OR APPROVED SUBSTITUTE



PERGOLA TO BE ANCHORED TO CONCRETE FOOTING STRUCTURE
PERGOLA

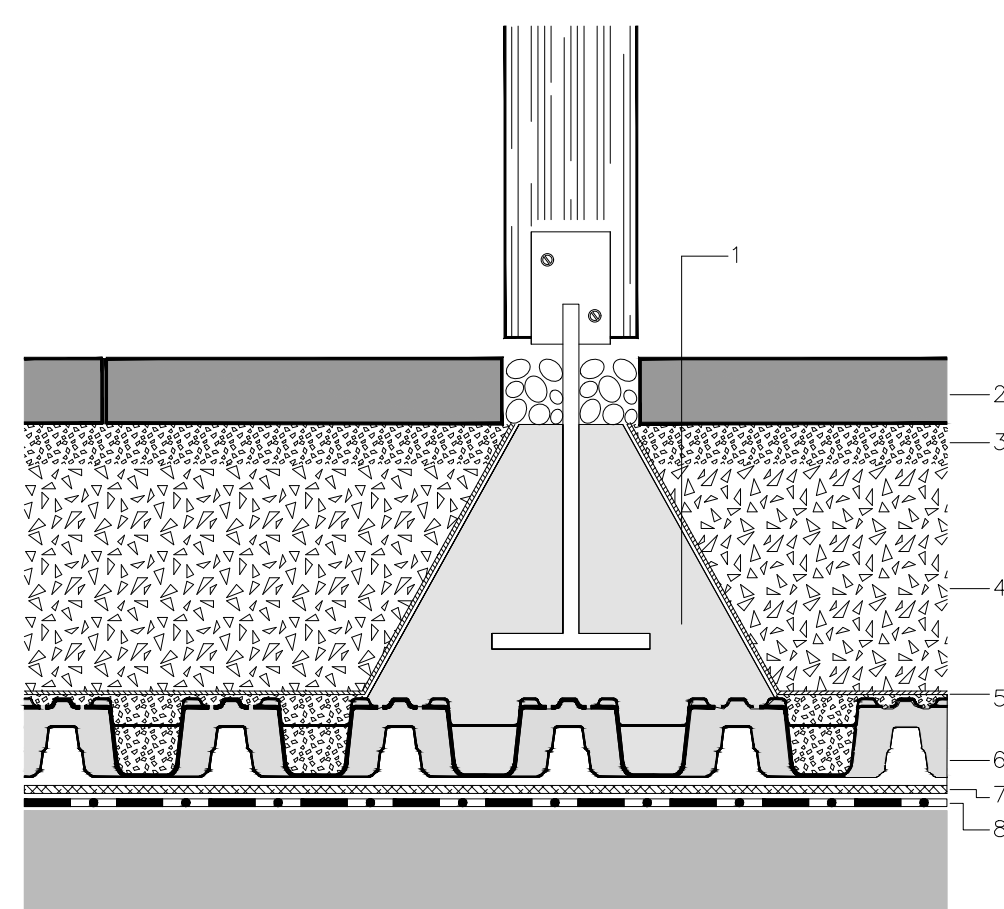
COVERED SEATING AREA DETAILS



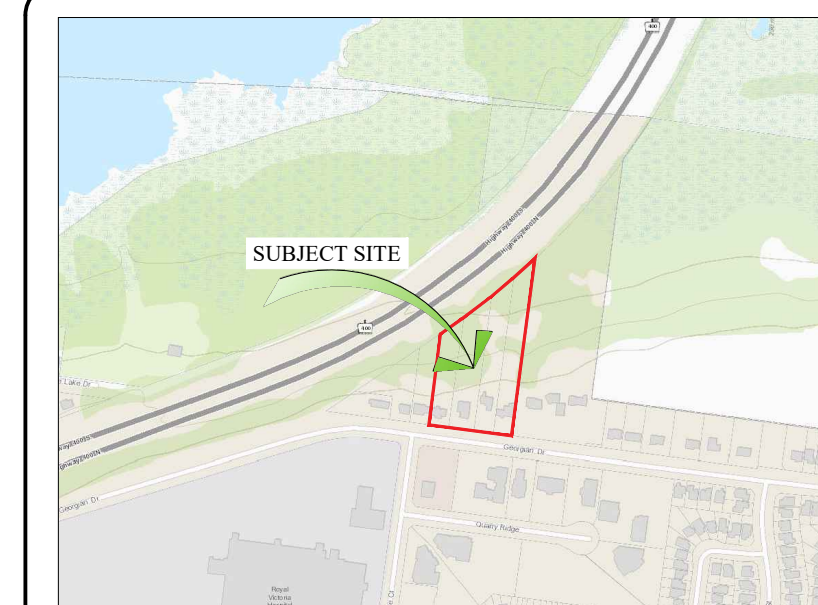
THE OUTDOOR GREATROOM CO. BROWN GRANDSTONE RECTANGULAR GAS FIRE PIT TABLE PROVIDED BY THE DECK STORE. 905-629-8082
FIREPIT TABLE

PERGOLA FOOTING STRUCTURE BY ZINCO CANADA

- 1 Concrete foundation for supporting structures
- 2 Concrete paving slab
- 3 1/4" Clear crushed aggregate (HPB), min. depth: 30 - 50 mm
- 4 Gravel base layer
- 5 Filter sheet ZinCo SF
- 6 Drainage element ZinCo Floradrain® FD 60, infill with crushed aggregate
- 7 Moisture retention & protection mat ZinCo ISM 50
- 8 Roof construction with waterproofing membrane



Notes:
This detail is particular for the ZinCo Green Roof system to use. The roof construction and the waterproofing are not specified as this can vary.



KEY MAP

N.T.S.

GENERAL NOTES

CONTRACTOR IS RESPONSIBLE FOR ALL LOCATES INCLUDING ALL UNDERGROUND SERVICES PRIOR TO ANY EXCAVATION OR INSTALLATIONS. THE CONTRACTOR IS REQUIRED TO NOTIFY THE VARIOUS UTILITY COMPANIES 48 HOURS PRIOR TO THE COMMENCEMENT OF ANY WORK.

ANY ACCOMPANYING DOCUMENTATION RELATING TO THE LANDSCAPE PLAN AND/OR PRESERVATION PLAN SUCH AS TENDER DOCUMENTS AND CHANGE NOTICES ARE TO BE ENDORSED BY J.D.B. ASSOCIATES LIMITED PRIOR TO THE BEGINNING OF ANY SITE WORKS. IN THE EVENT THAT A DISCREPANCY THE DRAWING SHALL BE ASSUMED CORRECT.

IT IS THE RESPONSIBILITY OF THE PERSON OR PERSONS RESPONSIBLE FOR THE CONSTRUCTED WORKS TO NOTIFY THE LANDSCAPE ARCHITECT WHEN PREPARED FOR ANY REQUIRED INSPECTIONS AND SIGN OFFS.

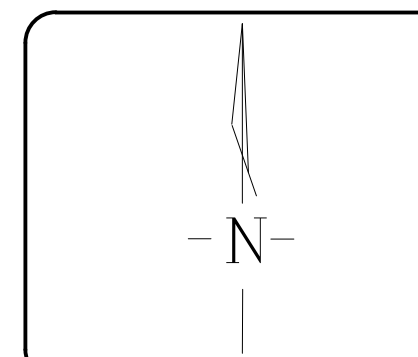
SCHEDULED MEETINGS SHALL TAKE PLACE AT THE CLOSEST MUTUALLY CONVENIENT TIME.

No.	REVISION	DATE	APRVD.
1.	CLIENT REVIEW	Nov. 19, 2018	MC
2.	SUBMISSION FOR REZONING	Apr. 1, 2019	MC
3.	SUBMISSION FOR SITE PLAN APPROVAL	Oct. 11, 2019	ST
4.	SECOND SUBMISSION	Apr. 9, 2020	MC
5.	RE-ISSUED FOR SUBMISSION	Apr. 15, 2021	MC

ALL DRAWINGS AND SPECIFICATIONS ARE INSTRUMENTS OF SERVICE AND ARE THE PROPERTY OF JDB ASSOCIATES LIMITED. DRAWINGS ARE NOT TO BE MODIFIED AND/OR REPRODUCED WITHOUT THE WRITTEN CONSENT OF JDB ASSOCIATES LIMITED. REPRODUCTION OF DRAWINGS IN ANY FORM WITHOUT THE CONSENT OF JDB ASSOCIATES LIMITED VOIDS THE DRAWING AT WHICH TIME JDB ASSOCIATES LIMITED ACCEPTS NO LIABILITY FOR THE DRAWING CONTENT OR WORKS RESULTING FROM SAID REPRODUCTION. DRAWINGS MAY BE REPRODUCED BY MUNICIPAL AND GOVERNMENT AGENCIES RESPONSIBLE FOR APPROVALS FOR THEIR OWN USE. JDB ASSOCIATES RESERVES THE RIGHT TO WITHDRAW ANY DRAWING(S) FROM GOVERNMENT OR MUNICIPAL AGENCIES WHETHER APPROVED OR NOT IN THE EVENT THAT ACCOUNTS ARE NOT SETTLED OR REMAIN OUTSTANDING.

IT IS THE RESPONSIBILITY OF THE CONTRACTOR TO VERIFY ALL DIMENSIONS ON THE SITE AND REPORT ANY DISCREPANCIES OR VARIATIONS FROM THE SUPPLIED INFORMATION TO THE LANDSCAPE ARCHITECT WITH THE PROJECT. JDB ASSOCIATES LIMITED IS NOT RESPONSIBLE FOR THE ACCURACY OF SURVEY, ARCHITECTURAL, MECHANICAL, ENGINEERING OR ELECTRICAL INFORMATION SHOWN ON THE DRAWING. FOR FURTHER INFORMATION REFER TO APPROPRIATE SURVEY, ARCHITECTURAL, MECHANICAL, ENGINEERING OR ELECTRICAL DRAWINGS PRIOR TO PROCEEDING WITH ANY WORKS.

THIS DRAWING IS NOT TO BE SCALED.



BASE INFORMATION PROVIDED BY:
A & A ASSOCIATES ARCHITECTS INC.
6 CARLAW AVE., SUITE 205B
TORONTO, ONTARIO M4M 2R5
PHONE: 416-466-0100

BASE PLAN REVISED: APRIL 2021

ACCEPTED BY

DATE



JDB ASSOCIATES LTD.
Urban Designers
Landscape Architects
Arborists
274 Burton Ave., Suite 1201
Barrie, Ontario L4N 5W4
Fax: 705-722-5660
Tel: 705-722-6278

THE GEORGIAN APARTMENTS
290, 294, 298, & 302
Georgian Drive,
City of Barrie

AMENITY SITE FURNITURE DETAILS

SCALE:	DATE:	DESIGNED BY:	REVIEWED BY:
N.T.S.	April 2021	St.T.M.C.	NB
CITY FILE No.	OUR FILE REF. #	DRAWN BY:	LP-8
	1191A-18	St.T.M.C.	