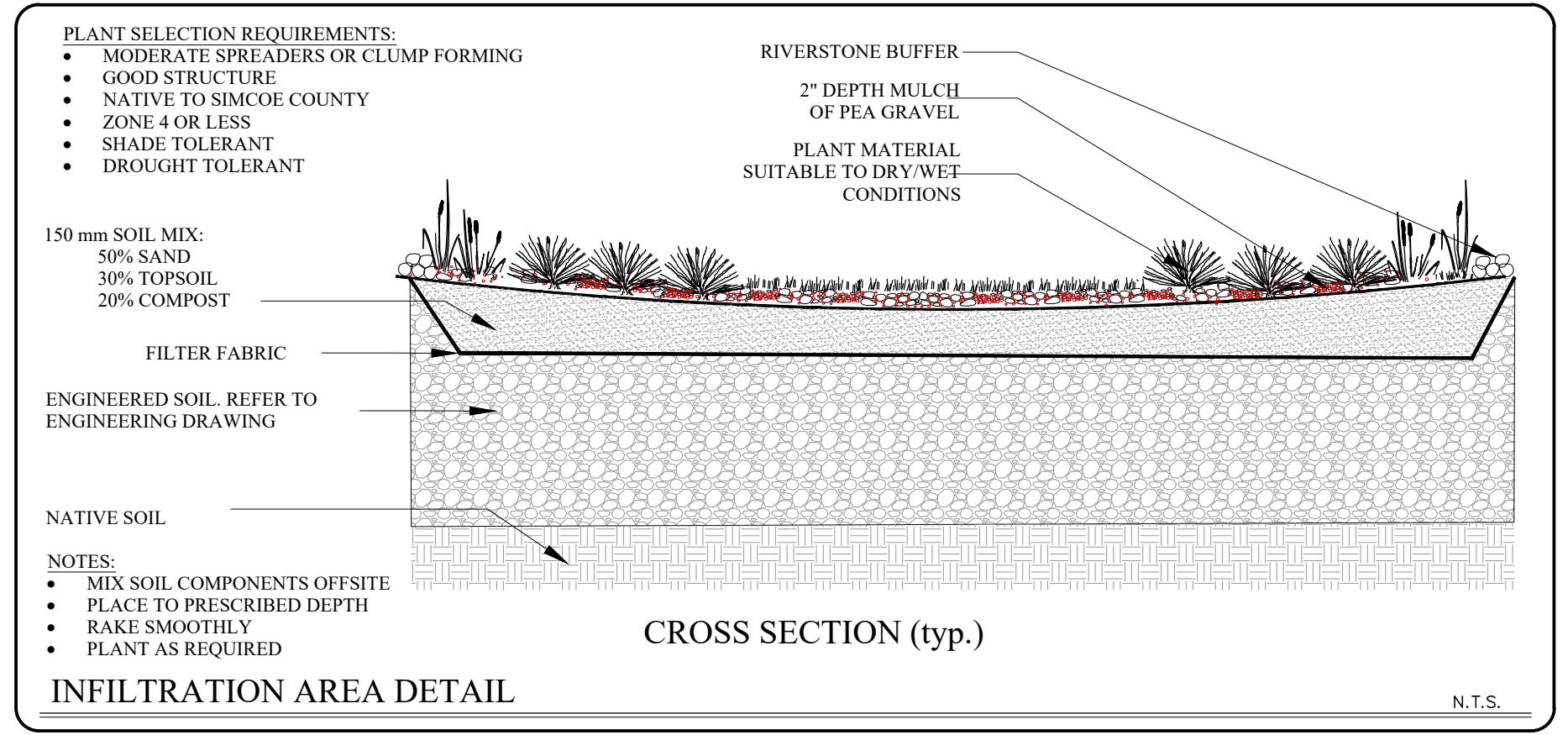




WEST PARKING WALL ELEVATION

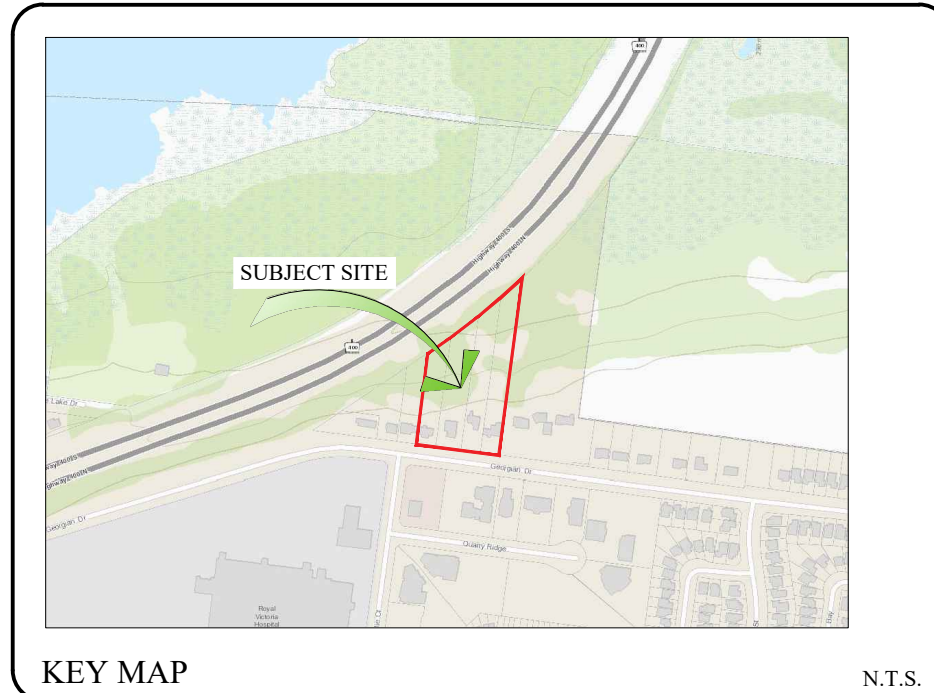
*SLOPES AND TOPOGRAPHY ARE APPROXIMATE. REFER TO GRADING PLAN BY OTHERS.

SCALE 1:75



INFILTRATION AREA DETAIL

N.T.S.



KEY MAP

N.T.S.

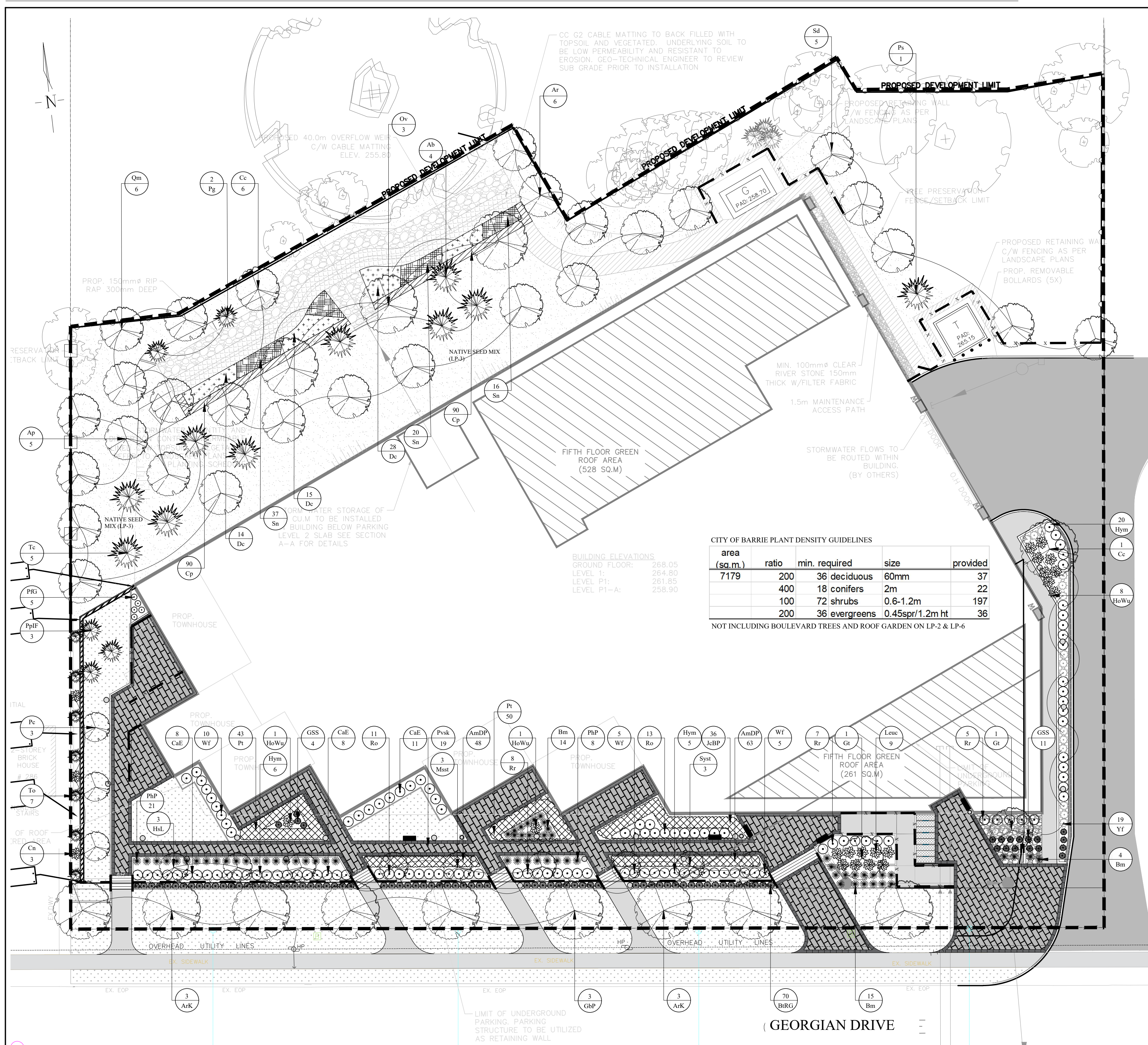
GENERAL NOTES

CONTRACTOR IS RESPONSIBLE FOR ALL LOCATES INCLUDING ALL UNDERGROUND SERVICES PRIOR TO ANY EXCAVATION OR INSTALLATIONS. THE CONTRACTOR IS REQUIRED TO NOTIFY THE VARIOUS UTILITY COMPANIES 48 HOURS PRIOR TO THE COMMENCEMENT OF ANY WORK.

ANY ACCOMPANYING DOCUMENTATION RELATING TO THE LANDSCAPE PLAN AND/OR PRESERVATION PLAN SUCH AS TENDER DOCUMENTS AND CHANGE NOTICES ARE TO BE ENDORSED BY J.D.B. ASSOCIATES LIMITED PRIOR TO THE BEGINNING OF ANY SITE WORKS. IN THE EVENT THAT A DISCREPANCY THE DRAWING SHALL BE ASSUMED CORRECT.

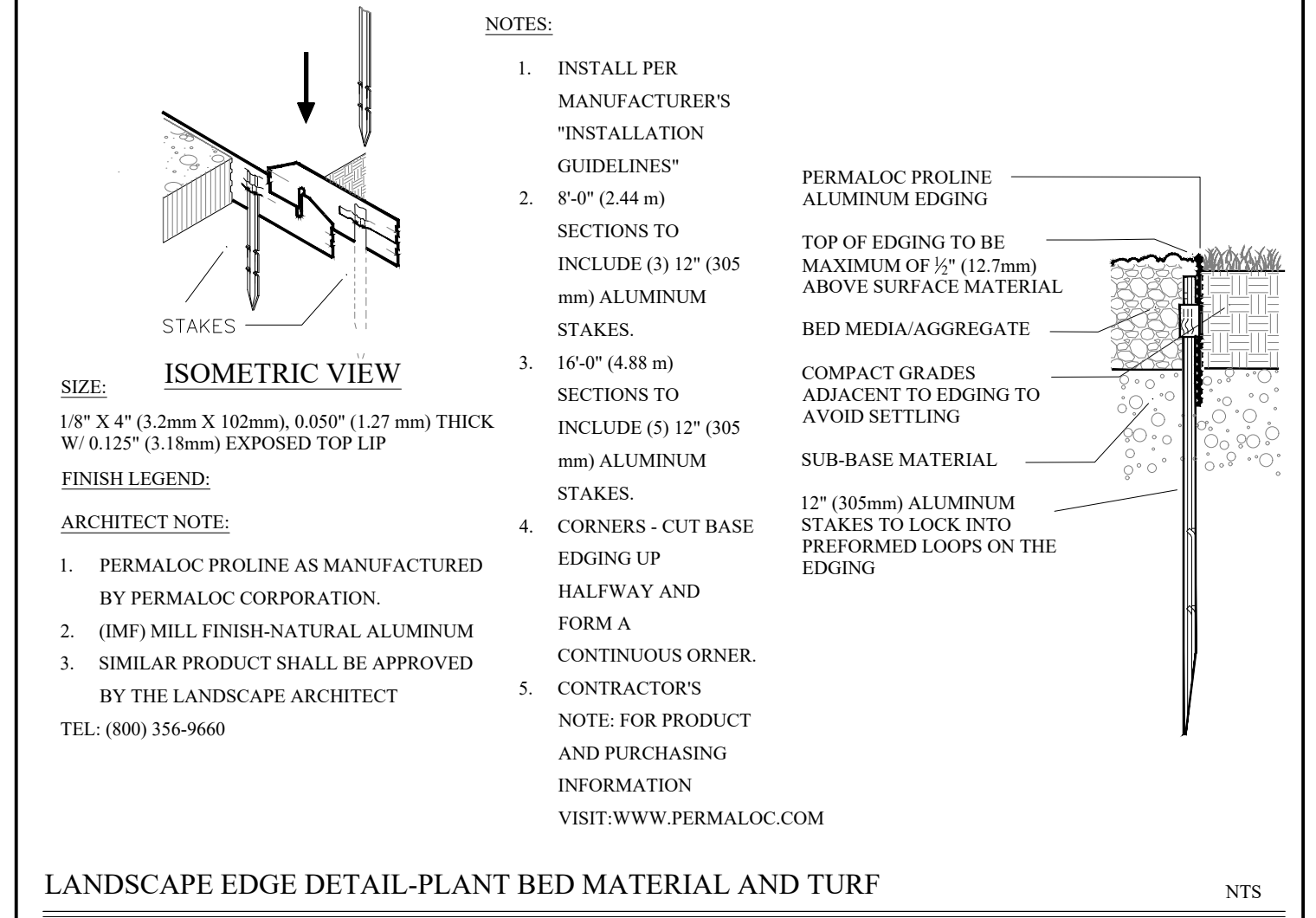
IT IS THE RESPONSIBILITY OF THE PERSON OR PERSONS RESPONSIBLE FOR THE CONSTRUCTED WORKS TO NOTIFY THE LANDSCAPE ARCHITECT WHEN PREPARED FOR ANY REQUIRED INSPECTIONS AND SIGN OFFS.

SCHEDULED MEETINGS SHALL TAKE PLACE AT THE CLOSEST MUTUALLY CONVENIENT TIME.



PLANTING PLAN

SCALE 1:250



LANDSCAPE EDGE DETAIL-PLANT BED MATERIAL AND TURF

SEEDING AND TOP SOIL NOTES

NO-MOW ZONE APPROXIMATELY 5694 sq/m (+/-10%) (+/- MEASUREMENTS TO BE TAKEN ON SITE)

SEEDING RATE - 30kg PER HECTARE SUPPLIED BY - OMC SEEDS 1-518-886-4557 ANNUAL RYE NURSE CROP TO BE APPLIED AT TIME OF NATIVE UPLAND PLANTING MIXTURE AT A RATE OF 12kg PER HECTARE REFER TO TERRASEEDING NOTES AND MULCH APPLICATION SPECIFICATIONS IN THIS BOX FOR FURTHER DETAILS.

TERRASEEDING APPLICATION SPECIFICATIONS

ECOBANKET OR TERRASEEDING TACTIFIER / FLEXGUARD HYDROMULCH SHALL BE APPLIED AS PER MANUFACTURER SPECIFICATIONS.

TOP SOIL:

TOPSOIL SHALL BE PROVIDED TO A MINIMUM DEPTH OF 0.45m FOR TERRESTRIAL AREAS TO BE TERRASEEDED. REFER TO PLANTING NOTES ON LP-4 FOR ALL THE OTHER AREAS TO BE PLANTED WITH SOIL, SHRUBS AND TREES AND FOR THE TOPSOIL QUALITY.

CODE	QNTY	COMMON NAME	BOTANICAL NAME	SIZE	FORM	SPACING	DETAIL	NOTES
DECIDUOUS TREES								
ArK	6	KARPIK MAPLE	Acer rubrum 'Karpick'	60 mm	W.B.	8.0 m o/c	BSD-1310	Full Form
Ar	6	RED MAPLE	Acer rubrum	60 mm	W.B.	9.0 m o/c	BSD-1310	Full Form/ Fall pruning only
Ap	5	STRIPPED MAPLE	Acer pennsylvanica	60 mm	W.B.	4.5 m o/c	BSD-1310	Full Form
Cc	7	BLUE BEECH	Carpinus caroliniana	60 mm	W.B.	5.0 m o/c	BSD-1310	Full Form
GpP	3	PRINCETON SENTRY MAIDENHAIR TREE	Ginkgo biloba 'Princeton Sentry'	60 mm	W.B.	8.0 m o/c	BSD-1310	Full Form
Ov	3	IRONWOOD	Ostrya virginiana	60 mm	W.B.	7.0 m o/c	BSD-1310	Full Form
Pc	3	ARISTOCRAT ORNAMENTAL PEAR	Pyrus calleryana 'Aristocrat'	60 mm	W.B.	6.0 m o/c	BSD-1310	Full Form
Sd	5	MOUNTAIN ASH	Sorbus decora	60 mm	W.B.	6.0 m o/c	BSD-1310	Full Form
St	2	STREET KEEPER HONEYLOCUST	Gleditsia triacanthos var. inermis Street Keeper	70mm	W.B.	As shown	BSD-1310	Full Form
Qm	6	BUR OAH	Quercus macrocarpa	60 mm	W.B.	6.0 m o/c	BSD-1310	Spring planting/ Soil pH-7.5
CONIFEROUS TREES								
Ab	4	BALSAM FIR	Abies balsamea	200cm	w.b.	6m o/c	BSD-1312	Full form / Do not cut leader
Pg	2	WHITE SPRUCE	Picea glauca	200cm	w.b.	5m o/c	BSD-1312	Full form / Do not cut leader
PpIF	3	ISELI FASTIGIATE COLORADO BLUE SPRUCE	Picea pungens 'Iseli Fastigiata'	200cm	w.b.	3m o/c	BSD-1312	Full form / Do not cut leader
Ps	1	EASTERN WHITE PINE	Pinus strobus	200cm	w.b.	6m o/c	BSD-1312	Full form / Do not cut leader
Tc	5	EASTERN HEMLOCK	Tsuga canadensis	200cm	w.b.	5.5m o/c	BSD-1312	Full form / Do not cut leader
To	7	EASTERN WHITE CEDAR	Thuja occidentalis	200cm	w.b.	4.5m o/c	BSD-1312	Full form / Do not cut leader
STANDARD TREES								
HsL	3	ROSE OF SHARON	Hibiscus syriacus 'Lutey'	125 cm stem	7 gal	As Per Drawing	D-3	Tree form / Container grown
Mst	3	TINA CRABAPPLE	Malus sargentii 'Tina'	150 cm stem	10 gal	As Per Drawing	D-3	Tree form / Container grown
Syst	3	KOREAN LILAC (standard)	Syringa meyers 'Palibin'	150 cm stem	7 gal	As Per Drawing	D-3	Tree form / Container grown
DECIDUOUS SHRUBS								
BRG	70	ROSE GLOW BARBERRY	Berberis thunbergii 'Rose Glow'	60 cm	3 gal	0.80 m o/c	BSD-1314	Full form / Container grown
CaE	27	EINSTEIN SUMMERSWEET	Clethra alnifolia 'Einstein'	60 cm	3 gal	1.2 m o/c	BSD-1314	Hedge / Container grown
Hym	31	TWIST-N-SHOUT HYDRANGEA	Hydrangea macrophylla 'Twist-n-Shout'	60 cm	3 gal	1.2m o/c	D-3	Full form / Container grown
PIG	5	GOLDFINGER CINQUEFOIL	Potentilla fruticosa 'Goldfinger'	60 cm	3 gal	0.60m o/c	BSD-1314	Full form / Container grown
Rr	24	NEARLY WILD ROSE	Rosa rugosa 'Nearly Wild'	60 cm	3 gal	0.90m o/c	BSD-1314	Full form / Container grown
Rr	20	RUGOSA ROSE (white)	Rosa rugosa 'Alba'	2 gal	Pot	1.0 m o/c	D-3	Full form / Container grown
Wf	20	RED PRINCE WEIGELA	Weigela florida 'Red Prince'	60 cm	3 gal	1.2m o/c	D-3	Full form / Container grown
EVERGREENS								
JcBP	36	BLUE PACIFIC SHORE JUNIPER	Juniperus conferta 'Blue Pacific'	50cm	3 gal.	1.0m o/c	BSD-1314	Full form / Container grown
YF	19	ADAM'S NEEDLE	Yucca filamentosa	50cm	3 gal.	0.60 m o/c	BSD-1314	Full form / Container grown
GROUND COVER								
AmDP	111	DWARF SEA THRIFT	Armeria maritima 'Dusseldorf Pride'	18cm	Pan	0.25m o/c	n/a	Full form / Container grown
Pt	93	VARIEGATED JAPANESE SPURGE	Pachysandra terminalis 'Variegata'	9 cm	PT	0.4m o/c	n/a	Full form / Container grown
PERENNIALS								
GSS	15	SUMMER SPARKLES BABY'S BREATH	Gypsophila x 'Summer Sparkles'	1 gal	Pot	0.8m o/c	n/a	Full form / Container grown
HoWu	10	EMPRESS WU HOSTA	Hosta 'Empress Wu'	1 gal	Pot	1.5m o/c	n/a	Full form / Container grown
Psk	19	LACEY BLUE SAGE	Perovskia atriplicifolia 'Lacey Blue'	1 gal	pot	0.60 m o/c	n/a	Full form / Container grown
Lec	9	BECKY SHASTA DAISY	Leucanthemum x superbum 'Becky'	1 gal	pot	0.75 m o/c	n/a	Full form / Container grown
INFILTRATION GRASSES								
Cp	180	PENNSYLVANIA SEDGE	Carex pennsylvanica	10cm	1gal	0.4m o/c	n/a	Full form / Do not cut leader
Dc	57	TUFTED HAIR GRASS	Deschampsia cespitosa	10cm	1gal	0.8m o/c	n/a	Full form / Do not cut leader
Sn	73	INDIAN GRASS	Sorghastrum nutans	10cm	1gal	0.6m o/c	n/a	Full form / Do not cut leader
ORNAMENTAL GRASSES								
Bm	33	COMMON QUAKING GRASS	Briza media	Plug50	PT	0.3 m o/c	n/a	Full form / Container grown
PhP	29	RIBBON GRASS	Phalaris arundinacea 'Picta'	1 gal	pot	1.0 m o/c	n/a	Full form / Container grown
VINES								
Cn	3	NELLY MOSER CLEMATIS	Clematis 'Nelly Moser'	1 gal	Pot	As shown	n/a	Full form / Container grown

PLANT LIST

REFER TO PLANTING NOTES AND DETAILS ON LP-4

No.	REVISION	DATE	APRVD
1.	CLIENT REVIEW	Nov. 19, 2018	MC
2.	SUBMISSION FOR REZONING	Apr. 1, 2019	MC
3.	SUBMISSION FOR SITE PLAN APPROVAL	Oct. 11, 2019	ST
4.	SECOND SUBMISSION	Apr. 9, 2020	MC
5.	RE-ISSUED FOR SUBMISSION	Apr. 15, 2021	MC

ALL DRAWINGS AND SPECIFICATIONS ARE INSTRUMENTS OF SERVICE AND ARE THE PROPERTY OF JDB ASSOCIATES LIMITED. DRAWINGS ARE NOT TO BE MODIFIED AND/OR REPRODUCED WITHOUT THE WRITTEN CONSENT OF JDB ASSOCIATES LIMITED. REPRODUCTION OF DRAWINGS IN ANY FORM WITHOUT THE CONSENT OF JDB ASSOCIATES LIMITED VOIDS THE DRAWING AT WHICH TIME JDB ASSOCIATES LIMITED ACCEPTS NO LIABILITY FOR THE DRAWING CONTENT OR WORKS RESULTING FROM SAID REPRODUCTION. DRAWINGS MAY BE REPRODUCED BY MUNICIPAL AND GOVERNMENT AGENCIES RESPONSIBLE FOR APPROVALS FOR THEIR OWN USE. JDB ASSOCIATES RESERVES THE RIGHT TO WITHDRAW ANY DRAWINGS FROM GOVERNMENT OR MUNICIPAL AGENCIES WHETHER APPROVED OR NOT IN THE EVENT THAT ACCOUNTS ARE NOT SETTLED OR REMAIN OUTSTANDING.

IT IS THE RESPONSIBILITY OF THE CONTRACTOR TO VERIFY ALL DIMENSIONS ON THE SITE AND REPORT ANY DISCREPANCIES OR VARIATIONS FROM THE SUPPLIED INFORMATION TO THE LANDSCAPE ARCHITECT WITH THE PROJECT. JDB ASSOCIATES LIMITED IS NOT RESPONSIBLE FOR THE ACCURACY OF SURVEY, ARCHITECTURAL, MECHANICAL, ENGINEERING OR ELECTRICAL INFORMATION SHOWN ON THE DRAWING. FOR FURTHER INFORMATION REFER TO APPROPRIATE SURVEY, ARCHITECTURAL, MECHANICAL, ENGINEERING OR ELECTRICAL DRAWINGS PRIOR TO PROCEEDING WITH ANY WORKS.

THIS DRAWING IS NOT TO BE SCALED.

BASE INFORMATION PROVIDED BY:
A & ASSOCIATES ARCHITECTS INC.
6 CARLAW AVE., SUITE 208
TORONTO, ONTARIO M4M 1R5
PHONE: 416-660-0100

BASE PLAN REVISED: APRIL 2021

ACCEPTED BY

LANDSCAPE ARCHITECTS STAMP
(Trade and Professional Seal of the Landscape Architect of Ontario)

JDB ASSOCIATES LTD.

Urban Designers
Landscape Architects
Arborsit

274 Burton Ave., Suite 1201
Barrie, Ontario
LAN 5W4

Fax: 705-722-5660
Tel: 705-722-6278

THE GEORGIAN APARTMENTS

290, 294, 298, & 302
Georgian Drive,
City of Barrie

PLANTING PLAN

SCALE: 1:250	DATE: April 2021	DESIGNED BY: S.T.M.C.	REVIEWED BY: NB
CITY FILE No.	OUR FILE REF. # 1191A-18	DRAWN BY: S.T.M.C.	LP-3