

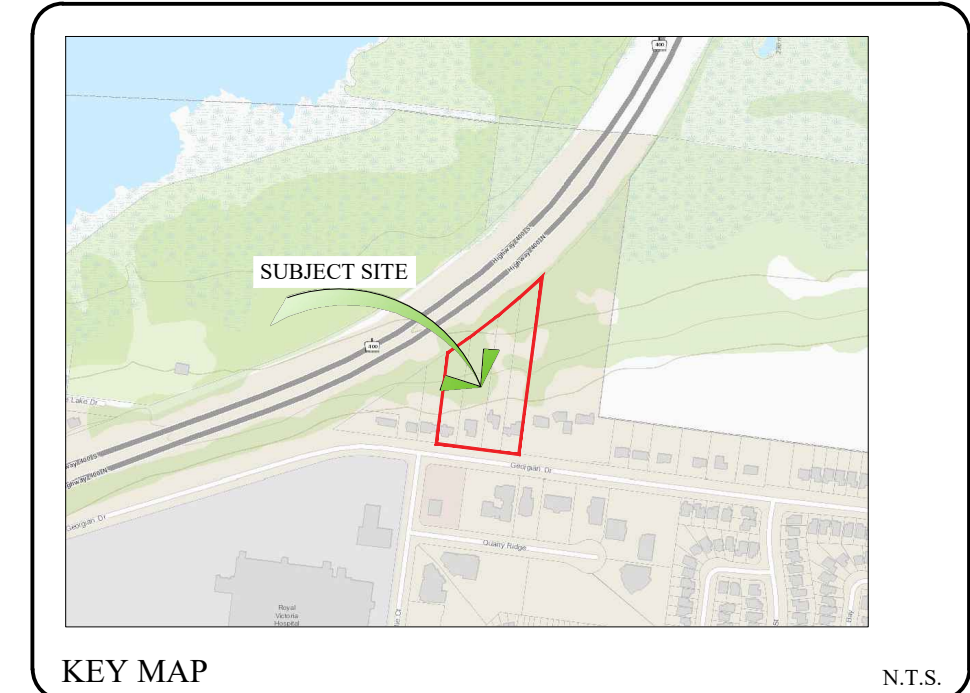
LEGEND

- SUBJECT LANDS. REFER TO SITE PLAN.
- #2 EXISTING TREE NUMBER
- TREE PRESERVATION FENCE. REFER TO DETAILS ON TP-2.
- TREE PRESERVATION ZONE. REFER TO DETAILS ON TP-2.
- ☉ EXISTING TREES SHARED WITH/ OR ON ADJACENT SITE AND HIGH VALUE TREES ON SITE TO BE PRESERVED. REFER TO VEGETATION INVENTORY ON THIS PAGE.
- ☉ TREES TO BE REMOVED. REFER TO VEGETATION INVENTORY ON THIS PAGE.

BOUNDARY TREE INVENTORY

Tree #	Nr. of trees	Botanical Name	Common name	DBH cm	Height m	Crown O (m)	Maturity	Health conditions	Location	Action	
1	1	<i>Acer platanoides</i>	Norway Maple	19	8	5	Immature	Poor	Beside hydro pole, 0.9m to sidewalk	Remove	
2	2	<i>Acer rubrum</i>	Red Maple	11,10	8	4	Immature	Poor	On site as shown	Remove	
3	1	<i>Fraxinus americana</i>	White Ash	22	8	6	Mature	Fair	Forked at 1.6m	Remove	
4	1	<i>Acer rubrum</i>	Red Maple	34	8	5	Mature	Poor	Forked at 1.7m, Bark injuries	Remove	
5	1	<i>Acer rubrum</i>	Red Maple	45	13	9	Mature	Fair/good	Sealed wounds	Remove	
6	1	<i>Fraxinus americana</i>	White Ash	49	13	9	Mature	Fair	On site as shown	Remove	
7	1	<i>Thuja occidentalis</i>	Eastern White Cedar	20	8	3	Immature	Fair	On site as shown	Remove	
8	1	<i>Acer saccharinum</i>	Silver Maple	100	14	14	Mature	Fair/poor	Cavities, Forked at 1.7m, one leader leaning at 45°	Remove-Hazardous	
9	1	<i>Salix nigra</i>	Black Willow	120	16	13	Mature	Fair	Some dead branches	Preserve	
10	1	<i>Acer saccharum</i>	Sugar Maple	14	7	4	Immature	Fair/good	BN habitat	Preserve	
BN	1	<i>Juglans cinerea</i>	Butternut	35	12	9	Mature	Fair/poor	BN habitat	Preserve	
11	1	<i>Acer saccharum</i>	Sugar Maple	21	7	5	Mature	Fair	BN habitat	Preserve	
Hedge	1	<i>Thuja occidentalis</i>	Eastern White Cedar	>10	3	2	Mature	Fair/poor	On site as shown	Remove	
12	1	<i>Fraxinus americana</i>	White Ash	42	14	10	Mature	Fair	BN habitat	Preserve	
13	2	<i>Acer saccharum</i>	Sugar Maple	12,10	10	6	Immature	Fair	On DL	Preserve	
14	1	<i>Fraxinus americana</i>	White Ash	24	12	5	Mature	Fair	Isometric	Remove	
Group	1	<i>Thuja occidentalis</i>	Eastern White Cedar	>20	10	4	Immature	Fair	On site as shown	Remove	
15	1	<i>Populus tremulaoides</i>	Trembling Aspen	23	14	5	Mature	Good	1.8m to DL	Preserve	
16	Group	<i>Thuja occidentalis</i>	Eastern White Cedar	>15	12	3	Immature	Fair	2.8m to DL	Preserve	
17	1	<i>Acer saccharum</i>	Sugar Maple	13	12	4	Immature	Fair	1m on passed DL	Preserve	
18	3	<i>Quercus Rubra</i>	Red Oak	22-25	18	8	Mature	Fair/good	0.5-2m passed DL	Preserve	
19	1	<i>Ulmus americana</i>	White Elm	22	16	7	Mature	Fair	Forked at base	1.5m to DL	Remove
20	Group	<i>Fraxinus americana</i>	White Ash	14-20	14	5	Immature	Fair	0.5-1.3m passed DL	Preserve	
21	1	<i>Ulmus americana</i>	White Elm	35	16	7	Mature	Fair	2m to DL	Remove	
22	1	<i>Fraxinus americana</i>	White Ash	32	14	6	Mature	Fair	2m passed DL	Preserve	
23	1	<i>Fraxinus americana</i>	White Ash	28	14	6	Mature	Fair	On site as shown	Remove	
Group	1	<i>Tilia americana</i>	Basswood	19	16	4	Immature	Fair	Multi-trunk	On site as shown	Remove
24	Group	<i>Thuja occidentalis</i>	Eastern White Cedar	15	8	4	Immature	Fair	On site as shown	Remove	
25	Hedge	<i>Thuja occidentalis</i>	Eastern White Cedar	>10	3	2	Mature	Fair/poor	On site as shown	Remove	
26	1	<i>Fagus americana</i>	American Beech	90	16	14	Mature	Fair	Forked at 2m, Bark injuries	On site as shown	Remove
27	2	<i>Fagus americana</i>	American Beech	48	16	16	Mature	Fair	2.2m to DL	Remove	
28a	1	<i>Thuja occidentalis</i>	Eastern White Cedar	26	10	5	Mature	Fair	Forked at 0.5m	3.5m to DL	Remove
28b	2	<i>Fagus americana</i>	American Beech	54,32	10	6	Mature	Fair	3.5m and 3.3m to DL	Remove	
29	1	<i>Quercus rubra</i>	Red Oak	58	16	11	Mature	Good	4.5m to DL	Remove	
30	1	<i>Fagus americana</i>	American Beech	16	8	5	Immature	Fair	3.5m to DL	Remove	
31	1	<i>Tilia americana</i>	Basswood	22,22	14	7	Mature	Fair	Forked at 0.6m	4m to DL	Remove
32	2	<i>Acer saccharum</i>	Sugar Maple	19	9	5	Immature	Fair	On site as shown	Remove	
33	1	<i>Acer saccharum</i>	Sugar Maple	27	9	5	Mature	Fair	On site as shown	Remove	
34	4	<i>Tilia americana</i>	Basswood	37	12	10	Mature	Poor	Multi-stem	On site as shown	Remove
Hedge	1	<i>Thuja occidentalis</i>	Eastern White Cedar	>10	3	2	Mature	Fair/poor	On site as shown	Remove	
34	1	<i>Fraxinus americana</i>	White Ash	22	10	4	Mature	Poor	Multi trunk with vines	On site as shown	Remove
35	1	<i>Acer saccharum</i>	Sugar Maple	31	14	8	Mature	Good	3.5m to DL	Remove	
36	1	<i>Fraxinus americana</i>	White Ash	27	10	5	Mature	Fair	3.2m to DL	Remove	
37	1	<i>Malus</i>	Apple	25	8	7	Mature	Fair	Vines	2m to DL	Remove
37	1	<i>Tilia americana</i>	Basswood	23	10	4	Mature	Fair	Vines	3m to DL	Remove
38	1	<i>Acer saccharum</i>	Sugar Maple	13	10	3	Immature	Fair	0.5m to DL	Remove	
39	1	<i>Acer saccharum</i>	Sugar Maple	35	10	6	Mature	Fair/poor	Vines	On property line	Preserve/remove vines
40	1	<i>Fraxinus americana</i>	White Ash	32	12	5	Mature	Fair	On property line	Preserve	
41	1	<i>Malus</i>	Apple	25	8	7	Mature	Fair	3m to property line	Remove	
42	1	<i>Quercus rubra</i>	Red Oak	58	12	9	Mature	Fair	die back	6.7m to sidewalk	Remove
43	1	<i>Tilia americana</i>	Basswood	26	12	7	Mature	Fair	0.5m to DL	Remove	
44	1	<i>Quercus rubra</i>	Red Oak	16	10	5	Immature	Fair	2m on EP	Preserve	
45	1	<i>Tilia americana</i>	Basswood	14	8	5	Immature	Fair	2m on EP	Preserve	
46	1	<i>Tilia americana</i>	Basswood	18	8	4	Mature	Fair	1m on EP	Preserve	
47	Group	<i>Fagus americana</i>	American Beech	>60	18	25	Mature	Fair/good	Broken branches	9m on EP	Preserve

DL = Development Limit (see plan)



GENERAL NOTES

CONTRACTOR IS RESPONSIBLE FOR ALL LOCATES INCLUDING ALL UNDERGROUND SERVICES PRIOR TO ANY EXCAVATION OR INSTALLATIONS. THE CONTRACTOR IS REQUIRED TO NOTIFY THE VARIOUS UTILITY COMPANIES 48 HOURS PRIOR TO THE COMMENCEMENT OF ANY WORK.

ANY ACCOMPANYING DOCUMENTATION RELATING TO THE LANDSCAPE PLAN AND/OR PRESERVATION PLAN SUCH AS TENDER DOCUMENTS AND CHANGE NOTICES ARE TO BE ENDORSED BY J.D.B. ASSOCIATES LIMITED PRIOR TO THE BEGINNING OF ANY SITE WORKS. IN THE EVENT THAT A DISCREPANCY THE DRAWING SHALL BE ASSUMED CORRECT.

IT IS THE RESPONSIBILITY OF THE PERSON OR PERSONS RESPONSIBLE FOR THE CONSTRUCTED WORKS TO NOTIFY THE LANDSCAPE ARCHITECT WHEN PREPARED FOR ANY REQUIRED INSPECTIONS AND SIGN OFFS.

SCHEDULED MEETINGS SHALL TAKE PLACE AT THE CLOSEST MUTUALLY CONVENIENT TIME.

No.	REVISION	DATE	APRVD.
1.	CLIENT REVIEW	Nov. 19, 2018	MC
2.	SUBMISSION FOR REZONING	Apr. 1, 2019	MC
3.	SUBMISSION FOR SITE PLAN APPROVAL	Oct. 11, 2019	SIT
4.	SECOND SUBMISSION	Apr. 9, 2020	MC
5.	RE-ISSUED FOR SUBMISSION	Apr. 15, 2021	MC

ALL DRAWINGS AND SPECIFICATIONS ARE INSTRUMENTS OF SERVICE AND ARE THE PROPERTY OF JDB ASSOCIATES LIMITED. DRAWINGS ARE NOT TO BE MODIFIED AND/OR REPRODUCED WITHOUT THE WRITTEN CONSENT OF JDB ASSOCIATES LIMITED. REPRODUCTION OF DRAWINGS IN ANY FORM WITHOUT THE CONSENT OF JDB ASSOCIATES LIMITED VOIDS THE DRAWING AT WHICH TIME JDB ASSOCIATES LIMITED ACCEPTS NO LIABILITY FOR THE DRAWING CONTENT OR WORKS RESULTING FROM SAID REPRODUCTION. DRAWINGS MAY BE REPRODUCED BY MUNICIPAL AND GOVERNMENT AGENCIES RESPONSIBLE FOR APPROVALS FOR THEIR OWN USE. JDB ASSOCIATES RESERVES THE RIGHT TO WITHDRAW ANY DRAWINGS FROM GOVERNMENT OR MUNICIPAL AGENCIES WHETHER APPROVED OR NOT IN THE EVENT THAT ACCOUNTS ARE NOT SETTLED OR REMAIN OUTSTANDING.

IT IS THE RESPONSIBILITY OF THE CONTRACTOR TO VERIFY ALL DIMENSIONS ON THE SITE AND REPORT ANY DISCREPANCIES OR VARIATIONS FROM THE SUPPLIED INFORMATION TO THE LANDSCAPE ARCHITECT WITH THE PROJECT. JDB ASSOCIATES LIMITED IS NOT RESPONSIBLE FOR THE ACCURACY OF SURVEY, ARCHITECTURAL, MECHANICAL, ENGINEERING OR ELECTRICAL INFORMATION SHOWN ON THE DRAWING. FOR FURTHER INFORMATION REFER TO APPROPRIATE SURVEY, ARCHITECTURAL, MECHANICAL, ENGINEERING OR ELECTRICAL DRAWINGS PRIOR TO PROCEEDING WITH ANY WORKS.

THIS DRAWING IS NOT TO BE SCALED.

BASE INFORMATION PROVIDED BY:
A & A ASSOCIATES ARCHITECTS INC.
6 CARLAW AVE., SUITE 205B
TORONTO, ONTARIO M4M 2R5
PHONE: 416-466-0100

BASE PLAN REVISED: APRIL 2021

ACCEPTED BY: [Signature]

DATE: _____

LANDSCAPE ARCHITECTS STAMP

JDB ASSOCIATES LTD.
Urban Designers
Landscape Architects
Arborists

274 Burton Ave., Suite 1201
Barrie, Ontario
L4N 5W4

Fax: 705-722-5660
Tel: 705-722-6278

THE GEORGIAN APARTMENTS
290, 294, 298, & 302
Georgian Drive,
City of Barrie

TREE INVENTORY/PRESERVATION PLAN

SCALE: 1:250	DATE: April 2021	DESIGNED BY: S.T.M.C.	REVIEWED BY: NB
CITY FILE No. 1191A-18	OUR FILE REF. # 1191A-18	DRAWN BY: S.T.M.C.	TP-1