

**Legend**

	CONCRETE PAVING		1.2m CHAIN LINK FENCE
	SOD / ARTIFICIAL TURF - REFER TO PLANS		1.8m CHAIN LINK FENCE
	PLANTING BED		WOOD PRIVACY FENCING
	UNIT PAVER - TYPE A		GLASS PRIVACY FENCE
	UNIT PAVER - TYPE B		PROPERTY LINE
	WOOD DECK		LIGHT COLUMN
	LIMESTONE TRAIL		LIGHT STANDARDS - REFER TO ELECTRICAL DRAWINGS
			LIT BOLLARD - REFER TO ELECTRICAL DRAWINGS

- GENERAL NOTES:**
- DRAWINGS NOT TO BE USED FOR CONSTRUCTION UNLESS AUTHORIZED BY THE LANDSCAPE ARCHITECT
  - CONTRACTOR SHALL REPORT ANY DISCREPANCIES BETWEEN THE DRAWINGS AND SITE CONDITIONS PRIOR TO COMMENCEMENT OF THE WORK
  - ALL UTILITY LOCATES ARE THE RESPONSIBILITY OF THE CONTRACTOR. HAND DIG WITHIN THE LIMITS RECOMMENDED BY THE SERVICE UTILITY. UTILITY CONFLICTS WITH PROPOSED TREE LOCATIONS MUST BE REPORTED IMMEDIATELY TO THE LANDSCAPE ARCHITECT
  - BASE DRAWING PROVIDED BY SRM ARCHITECTS INC.
  - VEGETATION INVENTORY BY GSP GROUP INC.
  - FOR GRADING INFORMATION REFER TO DRAWING BY KWA. FOR SERVICING INFORMATION REFER TO DRAWINGS BY KWA.
  - LANDSCAPE DRAWINGS SHOW ENGINEERING INFORMATION FOR DESIGN PURPOSES ONLY. DO NOT CONSTRUCT ENGINEERING WORKS FROM THESE DRAWINGS.

## LANDSCAPE KEY PLAN

10-24 GROVE STREET, BARRIE, ON  
FILE: D11-021-2021

ISSUED FOR SITE PLAN APPROVAL, NOT FOR CONSTRUCTION.

DATE	ISSUE	BY
Mar. 11, 2022	Issued for Coordination	OW
Mar. 22, 2022	Issued for SPA #2	OW
DATE	REVISIONS	BY

201-72 Victoria Street South  
Richmond Hill, Ontario L4B 1P7  
T 905 882 8882  
F 905 882 8883  
www.gspgroup.ca

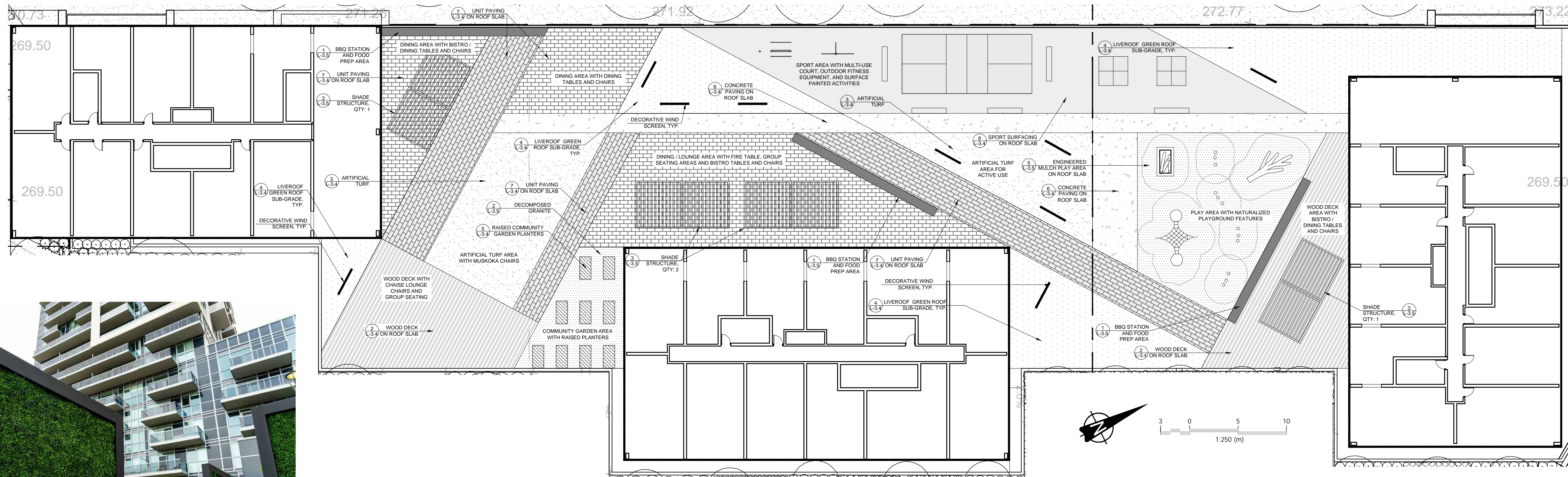
162 Locke Street South, Suite 200  
Hamilton, Ontario L8P 4A9  
T 905 572 1471  
F 905 572 1472

Date: February 22, 2022  
Scale: 1:500

Drawn By: OW / JH  
Project No.: 22058

**L-1.0**





NOTE:  
ALL MOVEABLE SITE FURNITURE AND  
PLANTERS TO BE SUPPLIED BY OWNER.



- Legend**
- CONCRETE PAVING
  - SOD / ARTIFICIAL TURF - REFER TO PLANS
  - PLANTING BED
  - UNIT PAVER - TYPE A
  - UNIT PAVER - TYPE B
  - WOOD DECK
  - LIMESTONE TRAIL
  - 1.2m CHAIN LINK FENCE
  - 1.8m CHAIN LINK FENCE
  - WOOD PRIVACY FENCING
  - GLASS PRIVACY FENCE
  - PROPERTY LINE
  - LIGHT COLUMN
  - LIGHT STANDARDS - REFER TO ELECTRICAL DRAWINGS
  - LIT BOLLARD - REFER TO ELECTRICAL DRAWINGS

- GENERAL NOTES:**
- DRAWINGS NOT TO BE USED FOR CONSTRUCTION UNLESS AUTHORIZED BY THE LANDSCAPE ARCHITECT
  - CONTRACTOR SHALL REPORT ANY DISCREPANCIES BETWEEN THE DRAWINGS AND SITE CONDITIONS PRIOR TO COMMENCEMENT OF THE WORK
  - ALL UTILITY LOCATES ARE THE RESPONSIBILITY OF THE CONTRACTOR. HAND DIG WITHIN THE LIMITS RECOMMENDED BY THE SERVICE UTILITY. UTILITY CONFLICTS WITH PROPOSED TREE LOCATIONS MUST BE REPORTED IMMEDIATELY TO THE LANDSCAPE ARCHITECT
  - BASE DRAWING PROVIDED BY SRM ARCHITECTS INC.
  - VEGETATION INVENTORY BY GSP GROUP INC.
  - FOR GRADING INFORMATION REFER TO DRAWING BY KWA. FOR SERVICING INFORMATION REFER TO DRAWINGS BY KWA.
  - LANDSCAPE DRAWINGS SHOW ENGINEERING INFORMATION FOR DESIGN PURPOSES ONLY. DO NOT CONSTRUCT ENGINEERING WORKS FROM THESE DRAWINGS.

## ROOFTOP AMENITY PLAN

10-24 GROVE STREET, BARRIE, ON  
FILE: D11-021-2021

ISSUED FOR SITE PLAN  
APPROVAL, NOT FOR  
CONSTRUCTION.



DATE	ISSUE	BY
Mar. 11, 2022	Issued for Coordination	OW
Mar. 22, 2022	Issued for SPA #2	OW
DATE	REVISIONS	BY



Date: February 22, 2022  
Scale: 1:500  
Drawn By: OW  
Project No.: 22058

L-1.1





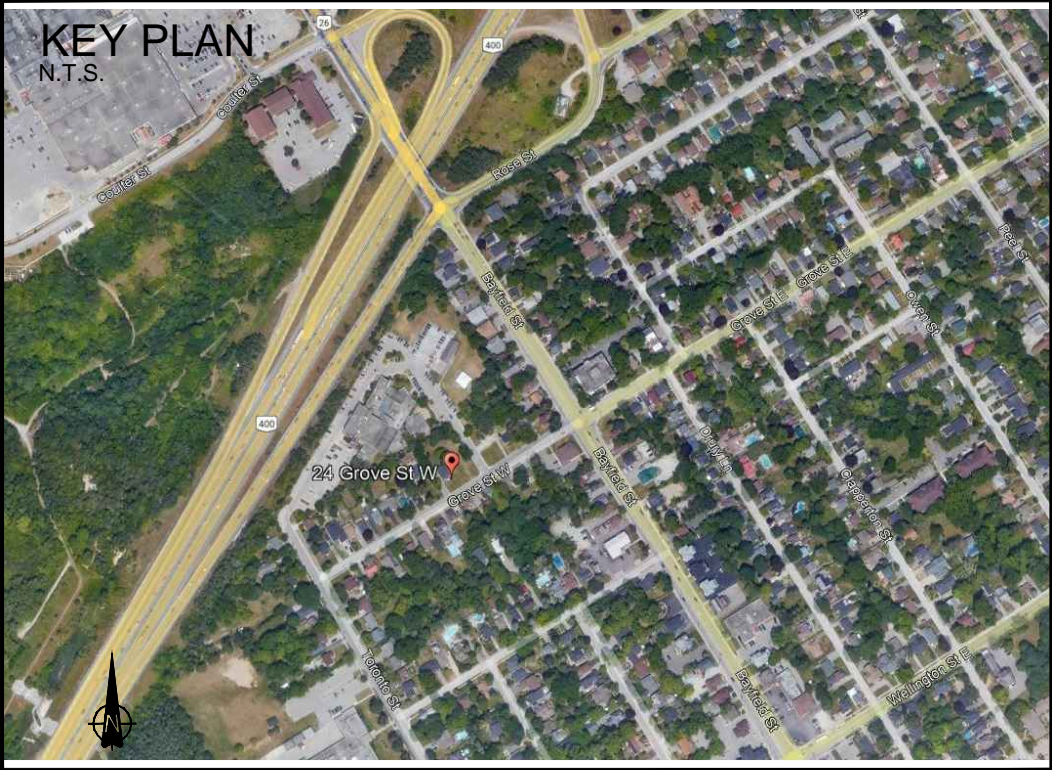
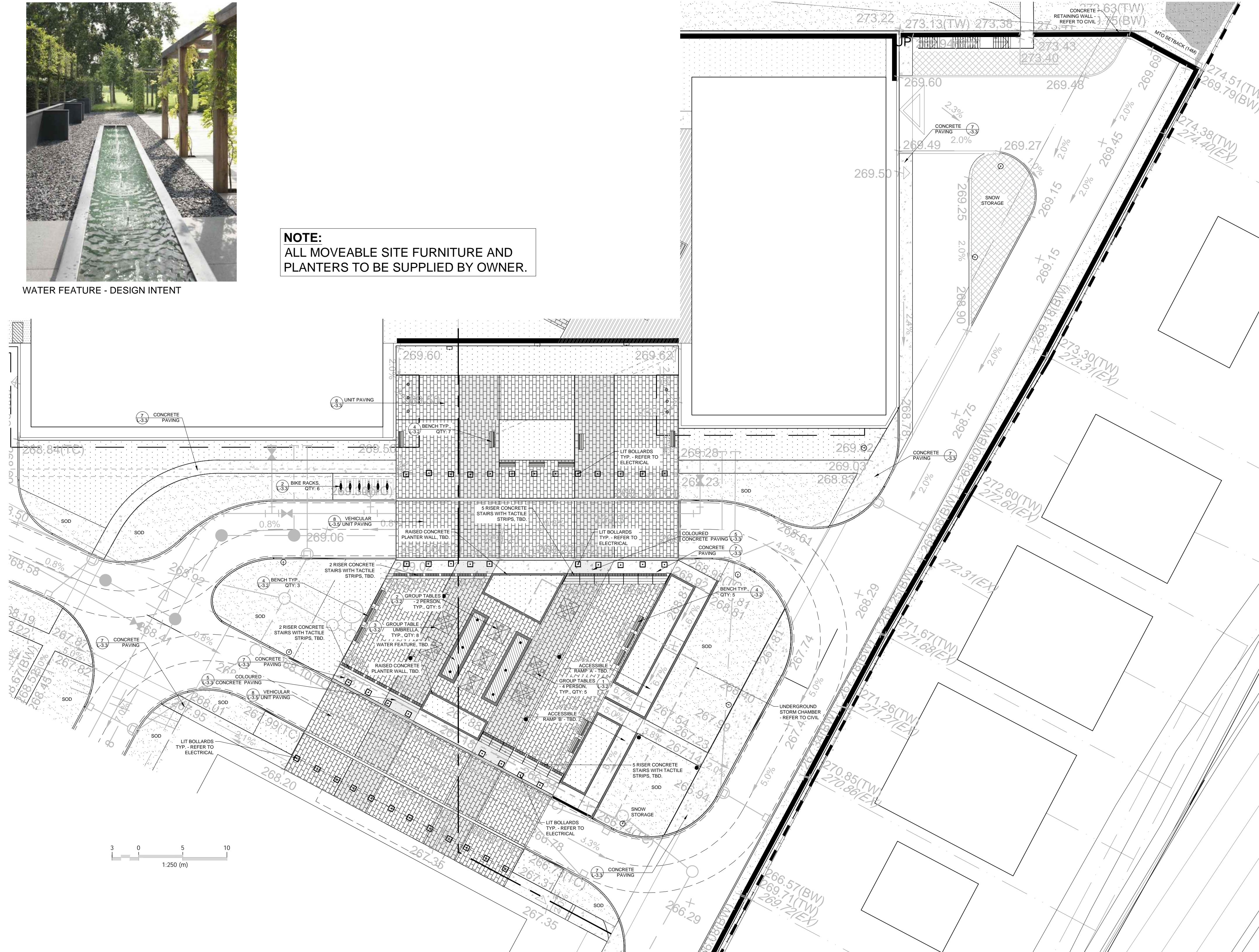
Date: February 22, 2022	Drawn By: OW
Scale: 1:500	Project No.: 22058

**NOTE:**  
ALL MOVEABLE SITE FURNITURE AND  
PLANTERS TO BE SUPPLIED BY OWNER.



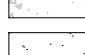



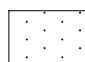

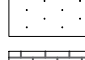










**NOTE:**  
ALL MOVEABLE SITE FURNITURE AND  
PLANTERS TO BE SUPPLIED BY OWNER.



### Legend

- |   |   |   |  |
|---|---|---|--|
|  | CONCRETE PAVING                           |  | 1.2m CHAIN LINK FENCE                                |
|  | SOD / ARTIFICIAL TURF<br>- REFER TO PLANS |  | 1.8m CHAIN LINK FENCE                                |
|  | PLANTING BED                              |  | WOOD PRIVACY FENCING                                 |
|  | UNIT PAVER - TYPE A                       |  | GLASS PRIVACY FENCE                                  |
|  | UNIT PAVER - TYPE B                       |  | PROPERTY LINE  |
|  | WOOD DECK                                 |  | LIGHT COLUMN   |
|  | LIMESTONE TRAIL                           |  | LIGHT STANDARDS -<br>REFER TO ELECTRICAL<br>DRAWINGS |
|   |   |  | LIT BOLLARD - REFER TO<br>ELECTRICAL DRAWINGS        |

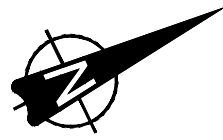
### GENERAL NOTES

1. DRAWINGS NOT TO BE USED FOR CONSTRUCTION UNLESS AUTHORIZED BY THE LANDSCAPE ARCHITECT
2. CONTRACTOR SHALL REPORT ANY DISCREPANCIES BETWEEN THE DRAWINGS AND SITE CONDITIONS PRIOR TO COMMENCEMENT OF THE WORK
3. ALL UTILITY LOCATES ARE THE RESPONSIBILITY OF THE CONTRACTOR. HAND DIG WITHIN THE LIMITS RECOMMENDED BY THE SERVICE UTILITY. UTILITY CONFLICTS WITH PROPOSED TREE LOCATIONS MUST BE REPORTED IMMEDIATELY TO THE LANDSCAPE ARCHITECT
4. BASE DRAWING PROVIDED BY SRM ARCHITECTS INC.
5. VEGETATION INVENTORY BY GSP GROUP INC.
6. FOR GRADING INFORMATION REFER TO DRAWING BY KWA. FOR SERVICING INFORMATION REFER TO DRAWINGS BY KWA.
7. LANDSCAPE DRAWINGS SHOW ENGINEERING INFORMATION FOR DESIGN PURPOSES ONLY. DO NOT CONSTRUCT ENGINEERING WORKS FROM THESE DRAWINGS.

## CENTRAL PIAZZA PLAN

10-24 GROVE STREET, BARRIE, ON  
FILE: D11-021-2021

ISSUED FOR SITE PLAN  
APPROVAL, NOT FOR  
CONSTRUCTION.



DATE	ISSUE	BY
Mar. 11, 2022	Issued for Coordination	OW
Mar. 22, 2022	Issued for SPA #2	OW
DATE	REVISIONS	BY



201-72 Victoria Street South  
Kitchener, Ontario N2G 4Y9  
T 519 569 8883

162 Locke Street South, Suite 100  
Hamilton, Ontario L8P 4A9  
T 905 572 7477

[www.qspgroup.com](http://www.qspgroup.com)

Date: February 22, 202

Scale: 1:50

Drawn By: OI

Project No.: 2206

### 3.1.



PLANTING NOTES:

1. ALL PLANT MATERIAL SHALL BE NO. 1 NURSERY GROWN, MEETING SPECIFICATIONS FOR SIZE, HEIGHT, SPREAD, GRADING, QUALITY, METHOD OF CULTIVATION, AND BALLING AND BURLAP SPECIFICATIONS AS SET OUT IN THE 8TH EDITION 2006 GUIDE SPECIFICATION FOR NURSERY STOCK PREPARED BY THE CNLA.

2. NO SUBSTITUTIONS IN SPECIES, CULTIVAR, QUANTITY, SIZE OR CONDITION WILL BE PERMITTED WITHOUT THE WRITTEN APPROVAL OF THE CONSULTANT. ANY UNAPPROVED SUBSTITUTED MATERIAL WILL BE REQUIRED TO BE REMOVED FROM THE SITE AT THE EXPENSE OF THE CONTRACTOR.

3. ANY INCONSISTENCIES FOUND IN THE QUANTITIES AS SHOWN ON THE PLAN AND THE PLANT LIST SHALL BE IMMEDIATELY REPORTED TO THE CONSULTANT.

4. LAYOUT SHALL BE THE RESPONSIBILITY OF THE CONTRACTOR. LAYOUT, PLANT STAKE-OUT AND DELIVERED PLANT MATERIAL SHALL BE APPROVED BY THE CONSULTANT PRIOR TO INSTALLATION.

5. NATIVE OR IMPORTED TOPSOIL SHALL BE TESTED AS SPECIFIED AND APPROVED BY THE CONSULTANT PRIOR TO ADDING ANY AMENDMENTS AND PLACEMENT. PLANTING MIX, WHERE INDICATED, SHALL FOLLOW THE MIX SPECIFICATIONS.

6. PROVIDE 450MM MINIMUM DEPTH OF APPROVED TOPSOIL OR PLANTING MIX IN ALL BEDS, UNLESS OTHERWISE NOTED. ALL BEDS SHALL BE MULCHED WITH APPROVED MULCH TO A MINIMUM DEPTH OF 100MM, UNLESS OTHERWISE NOTED. DEPTHS SHALL BE THOSE ACHIEVED UNDER LIGHT COMPACTION. AREAS TO BE SODDED OR SEEDED SHALL BE PROVIDED WITH 200 MM OF APPROVED TOPSOIL, COMPACTED TO 85% SPD.

7. NO BARE-ROOT PLANTING SHALL BE PERMITTED BETWEEN MAY 15 AND OCTOBER 15.

8. PLANT MATERIAL SHALL BE THOROUGHLY WATERED AT THE TIME OF PLANTING.

9. THOSE AREAS NOT SPECIFICALLY IDENTIFIED FOR PLANTING, OR OTHERWISE NOTED, SHALL BE SODDED. SODDING SHALL BE MAINTAINED AND WARRANTED UNTIL FIRST CUT. SEEDING SHALL BE MAINTAINED AND WARRANTED UNTIL OCTOBER 1 FOR SPRING SEEDING AND JUNE 1 FOR FALL SEEDING.

10. ALL TREES AND SHRUBS SHALL BE UNDER WARRANTY FOR A PERIOD OF 24 MONTHS COMMENCING ON THE DATE OF ACCEPTANCE.

11. THE CONTRACTOR SHALL PROVIDE MAINTENANCE IMMEDIATELY AFTER THE PLANTS ARE INSTALLED AND CONTINUE THROUGHOUT THE ENTIRE WARRANTY PERIOD. MAINTENANCE REQUIREMENTS SHALL INCLUDE ALL PROCEDURES CONSISTENT WITH PROPER HORTICULTURAL PRACTICES TO ENSURE NORMAL, VIGOROUS, AND HEALTHY GROWTH OF ALL MATERIAL PLANTED. ALL STAKES, WIRE, HOSE, AND OTHER ACCESSORIES MUST BE REMOVED PRIOR TO FINAL WARRANTY INSPECTION.

12. ALL PLANT MATERIAL USED AS REPLACEMENTS FOR UNACCEPTABLE MATERIAL SHALL BE OF THE SAME QUALITY AND REQUIREMENTS PRESCRIBED FOR THE ORIGINAL MATERIAL. REPLACEMENTS SHALL BE MADE ONCE UNDER THE WARRANTY.

GROWING MEDIUM NOTES:

1.0 GROWING MEDIUM TESTING:

1.1 GROWING MEDIUMS (TOPSOIL, PLANTING MIXES) AND ORGANIC AMENDMENTS MUST BE TESTED BY AN OMAFRA ACCREDITED AGENCY AND APPROVED PRIOR TO USE. TEST TOPSOIL FOR P, K, CA AND MG, MINOR ELEMENT VALUES, SOLUBLE SALT CONTENT, ORGANIC MATTER, TEXTURE AND PH VALUE APPROPRIATE FOR THE ESTABLISHMENT AND GROWTH OF ORNAMENTAL NURSERY STOCK. SUBMIT TEST RESULTS AND ANALYSIS INCLUDING RECOMMENDATIONS FOR AMENDMENTS AND FERTILIZER TO THE CONSULTANT.

2.0 TOPSOIL:

2.1 TOPSOIL SHALL BE FERTILE, FRIABLE, TOPSOIL, FREE OF: FRAGMENTS LARGER THAN 75MM IN SIZE; STONES OVER 30MM IN DIAMETER; DEBRIS; PLANTS OR THEIR ROOTS; STICKS; NOXIOUS SEED PLANTS; STOLONS; SEEDS; SALTS; SOIL STERILANTS; CHEMICAL CONTAMINANTS; OTHER MATERIALS DETRIMENTAL TO PLANT GROWTH.

2.2 FERTILIZER AND AMENDMENTS: MUST BE MADE AS PER SOIL TESTING AGENCY RECOMMENDATIONS.

2.3 ALL TOPSOIL FOR THE INTENSIVE USE LAWN AREAS SHALL BE SANDY LOAM CLASS ONLY.

2.4 TOPSOIL: SHALL NOT BE MOVED, DELIVERED OR WORKED ON WHILE IN A FROZEN STATE OR CONDITION.

3.0 GROWING MEDIUM - PLANTING MIXES:

3.1 PLANTING MIX: (WHERE SPECIFIED) SHALL BE THOROUGHLY COMBINED PRIOR TO PLACEMENT IN PLANTING BED AREAS TO THE FOLLOWING PROPORTIONS: 4 PARTS APPROVED TOPSOIL, 1 PART COMPOST, 1 PART SHREDDED PEAT MOSS AND AN APPLICATION OF HIGH PHOSPHOROUS FERTILIZER (0-20-0).

3.2 MIXES CONTAINING A SIGNIFICANT AMOUNT OF PEAT MOSS SHALL NOT BE PERMITTED TO DRY OUT. THE MOISTURE CONTENT OF THE PEAT MOSS AT THE TIME OF MIXING SHALL BE NOT LESS THAN 60% TO 75%.

4.0 FERTILIZER AND AMENDMENTS:

4.1 ORGANIC SOIL ADDITIVE: "GRO-BARK" FINE COMPOSTED PINE MULCH OR AN APPROVED ALTERNATIVE.

4.2 FERTILIZER: COMPLETE COMMERCIAL FERTILIZER WITH 50% OF THE ELEMENTS DERIVED FROM ORGANIC SOURCES.

4.3 PEAT MOSS: DECOMPOSED PLANT MATERIAL, FAIRLY ELASTIC AND HOMOGENOUS, FREE OF DECOMPOSED COLLOIDAL RESIDUE, WOOD, SULPHUR AND IRON AND OF BROWN COLOUR CONTAINING MINIMUM 60% ORGANIC MATTER BY WEIGHT, MOISTURE CONTENT NOT EXCEEDING 15% AND PH VALUE OF 3.4 -5.5.

4.4 COMPOST AND MANURE: SHALL MEET THE STANDARDS FOUND IN THE INTERIM GUIDELINES FOR THE PRODUCTION AND USE OF AEROBIC COMPOST IN ONTARIO PUBLISHED BY THE ONTARIO MINISTRY OF ENVIRONMENT AND ENERGY (MOEE) AND SHALL BE VIRTUALLY FREE FROM ALL VIABLE WEED SEEDS, OR OTHER PLANT REPRODUCTIVE PARTS, PATHOGENS, CHEMICALS OR TOXIC CONTAMINATES. MANURE SHALL BE WELL ROTTED, UNBLEACHED CATTLE MANURE, FREE FROM HARMFUL CHEMICALS AND OTHER INJURIOUS SUBSTANCES, AT LEAST EIGHT MONTHS OLD, BUT NOT MORE THAN TWO YEARS OLD AND WITH NO MORE THAN 25% STRAW, LEAVES OR OTHER MATERIALS. PHYSICAL CONTAMINATES SUCH AS ROCK, PLASTIC, METAL OR GLASS SHALL BE LESS THAN 0.5%. TOTAL CARBON TO NITROGEN RATIO IN THE RESULTING GROWING MEDIUM SHALL NOT EXCEED 30:1.

4.5 LIME: LIMESTONE CONTAINING NOT LESS THAN 8% OF CALCIUM AND MAGNESIUM CARBONATES COMBINED, FINELY GROUND TO PASS A 10 MESH SIEVE WITH AT LEAST ONE HALF PASSING A 100 MESH SIEVE. RATE OF APPLICATION SHALL BE DETERMINED AFTER THE PH OF THE TOPSOIL.

4.6 BONE MEAL: RAW, FINELY GROUND WITH A MINIMUM ANALYSIS OF 4% NITROGEN AND 20% PHOSPHORIC ACID.

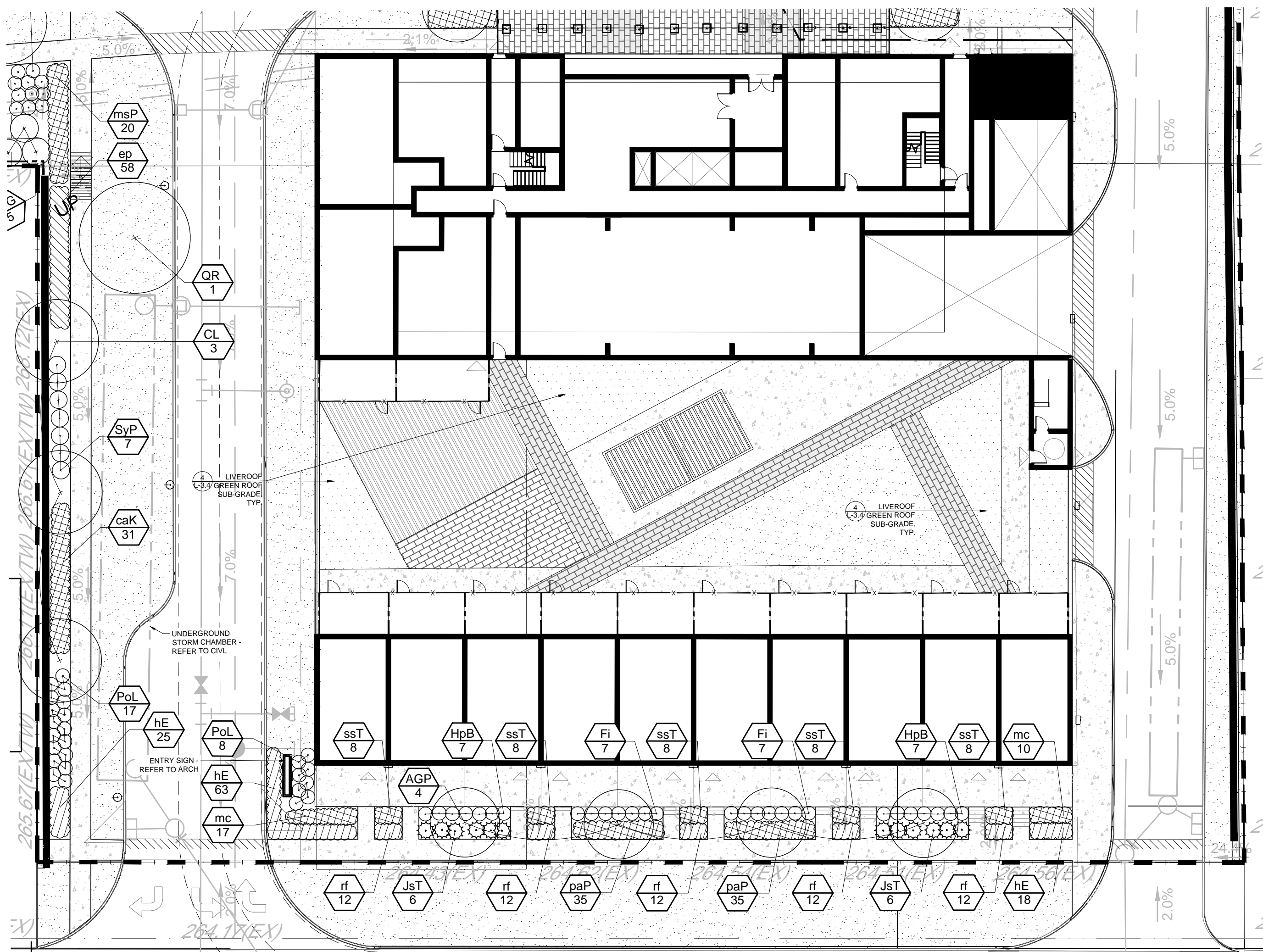
4.7 SAND: SHARP, CLEAN SAND, TO OPS5 1002-3.

Planting Density Chart Calculations

Plant Category	Required	Provided
Deciduous Trees, Site Area / 200	127	102
Evergreen Trees, Site Area / 400	63	63
Deciduous Shrubs, Site Area / 100	254	522
Coniferous Shrubs, Site Area / 200	127	181
Site Area: 25,385m <sup>2</sup>		

PLANT SCHEDULE L2.1

DECIDUOUS TREES		QTY	BOTANICAL NAME	COMMON NAME	SIZE	CONTAINER	REMARKS	
AGP	4	Amelanchier x grandiflora 'Princess Diana'	Princess Diana Apple Serviceberry	60mm Cal.	W.B.			
CL	3	Cladrastis lutea	American Yellowwood	60mm Cal.	W.B.			
QR	1	Quercus rubra	Red Oak	60mm Cal.	W.B.		To be spring dug and planted.	
CONIFEROUS SHRUBS		QTY	BOTANICAL NAME	COMMON NAME	SIZE	CONTAINER	SPACING	REMARKS
JsT	12	Juniperus sabina 'Tamariscifolia'	Tamarix Savin Juniper	60cm	3 gal.	1.3m		
DECIDUOUS SHRUBS		QTY	BOTANICAL NAME	COMMON NAME	SIZE	CONTAINER	SPACING	REMARKS
Fi	14	Forsythia x intermedia 'Fiesta'	Fiesta Forsythia	60cm	3 gal.	1m		
HpB	14	Hydrangea paniculata 'Bombshell'	Bombshell Hydrangea	60cm	3 gal.	1m		
PoL	25	Physocarpus opulifolius 'Little Devil' TM	Little Devil Dwarf Ninebark	60cm	3 gal.	1m		
SyP	7	Syringa meyeri 'Palibin'	Dwarf Korean Lilac	60cm	3 gal.	1.25m		
ORNAMENTAL GRASSES		QTY	BOTANICAL NAME	COMMON NAME	SIZE	CONTAINER	SPACING	REMARKS
caK	31	Calamagrostis x acutiflora 'Karl Foerster'	Feather Reed Grass	---	1 gal.	700mm		
msP	20	Miscanthus sinensis 'Purpureus'	Purple Eulalia Grass	---	1 gal.	800mm		
mc	27	Molinia caerulea 'Moorhexe'	Moor Wilch Moor Grass	---	1 gal.	600mm		
paP	70	Pennisetum alopecuroides 'Piglet'	Piglet Dwarf Fountain Grass	---	1 gal.	500mm		
ssT	40	Schizachyrium scoparium 'The Blues'	The Blues Little Bluestem	---	1 gal.	550mm		
PERENNIALS		QTY	BOTANICAL NAME	COMMON NAME	SIZE	CONTAINER	SPACING	REMARKS
ep	58	Echinacea purpurea	Coneflower	---	1 gal.	500mm		
hE	106	Hemerocallis x 'Elegant Candy'	Elegant Candy Daylily	---	1 gal.	450mm		
rf	60	Rudbeckia fulgida sultivanti 'Goldsturm'	Goldsturm Coneflower	---	1 gal.	450mm		



Legend

CONCRETE PAVING	1.2m CHAIN LINK FENCE
SOD / ARTIFICIAL TURF - REFER TO PLANS	1.8m CHAIN LINK FENCE
PLANTING BED	WOOD PRIVACY FENCING
UNIT PAVER - TYPE A	GLASS PRIVACY FENCE
UNIT PAVER - TYPE B	PROPERTY LINE
WOOD DECK	LIGHT COLUMN
LIMESTONE TRAIL	LIGHT STANDARDS - REFER TO ELECTRICAL DRAWINGS
	LIT BOLLARD - REFER TO ELECTRICAL DRAWINGS

GENERAL NOTES:

- DRAWINGS NOT TO BE USED FOR CONSTRUCTION UNLESS AUTHORIZED BY THE LANDSCAPE ARCHITECT
- CONTRACTOR SHALL REPORT ANY DISCREPANCIES BETWEEN THE DRAWINGS AND SITE CONDITIONS PRIOR TO COMMENCEMENT OF THE WORK
- ALL UTILITY LOCATES ARE THE RESPONSIBILITY OF THE CONTRACTOR. HAND DIG WITHIN THE LIMITS RECOMMENDED BY THE SERVICE UTILITY. UTILITY CONFLICTS WITH PROPOSED TREE LOCATIONS MUST BE REPORTED IMMEDIATELY TO THE LANDSCAPE ARCHITECT
- BASE DRAWING PROVIDED BY SRM ARCHITECTS INC.
- VEGETATION INVENTORY BY GSP GROUP INC.
- FOR GRADING INFORMATION REFER TO DRAWING BY KWA. FOR SERVICING INFORMATION REFER TO DRAWINGS BY KWA.
- LANDSCAPE DRAWINGS SHOW ENGINEERING INFORMATION FOR DESIGN PURPOSES ONLY. DO NOT CONSTRUCT ENGINEERING WORKS FROM THESE DRAWINGS.

ROOFTOP AMENITY PLAN PLANTING

10-24 GROVE STREET, BARRIE, ON  
FILE: D11-021-2021

ISSUED FOR SITE PLAN  
APPROVAL, NOT FOR  
CONSTRUCTION.



DATE	ISSUE	BY
Mar. 11, 2022	Issued for Coordination	OW
Mar. 22, 2022	Issued for SPA #2	OW
DATE	REVISIONS	BY



20-72 Victoria Street South  
Kitchener, Ontario N5C 4P9  
T 519 581 8881  
F 519 581 8445

162 Locks Street South, Suite 200  
Hamilton, Ontario L8P 4A9  
T 905 572 1471  
F 905 572 1471

www.gspgroup.ca

Date: February 22, 2022  
Scale: 1:500

Drawn By: OW  
Project No.: 22058

L-2.1

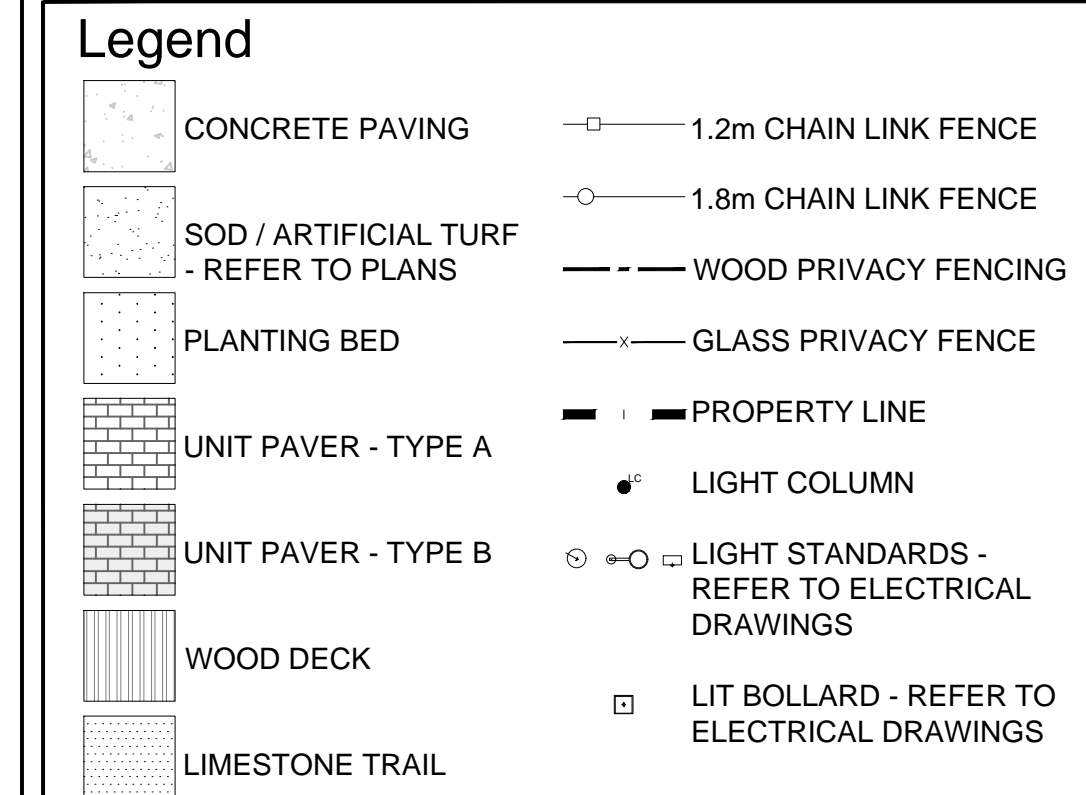




## L-2.2

CONIFEROUS TREES		QTY	BOTANICAL NAME	COMMON NAME	SIZE	CONTAINER		REMARKS
PAB	17		Picea abies	Norway Spruce	200cm Ht.	W.B.		
PPU	13		Picea pungens	Colorado Spruce	200cm Ht.	W.B.		
TO	33		Thuja occidentalis	Eastern White Cedar	250cm Ht.	W.B.		
DECIDUOUS TREES		QTY	BOTANICAL NAME	COMMON NAME	SIZE	CONTAINER		REMARKS
ASA	3		Acer saccharinum	Silver Maple	60mm Cal.	W.B.		
AE	2		Acer saccharum 'Endowment'	Endowment Sugar Maple	60mm Cal.	W.B.		
AM	12		Acer x freemanii 'Marmo'	Marmo Freeman Maple	60mm Cal.	W.B.		
CO	11		Celtis occidentalis	Common Hackberry	60mm Cal.	W.B.		
CL	6		Cladrastis lutea	American Yellowwood	60mm Cal.	W.B.		
GT	7		Gleditsia triacanthos inermis 'Street Keeper'	Street Keeper Honeylocust	60mm Cal.	W.B.		
QMA	5		Quercus macrocarpa	Burr Oak	60mm Cal.	W.B.		
QR	3		Quercus rubra	Red Oak	60mm Cal.	W.B.		To be spring dug and planted.
TA	7		Tilia americana	Basswood	60mm Cal.	W.B.		
TCO	8		Tilia cordata	Littleleaf Linden	60mm Cal.	W.B.		
CONIFEROUS SHRUBS		QTY	BOTANICAL NAME	COMMON NAME	SIZE	CONTAINER	SPACING	REMARKS
Jst	52		Juniperus sabina 'Tamariscifolia'	Tamarix Savin Juniper	60cm	3 gal.	1.3m	
Pm	69		Pinus mugo 'Stowmound'	Stowmound Mugo Pine	60cm	3 gal.	1m	
DECIDUOUS SHRUBS		QTY	BOTANICAL NAME	COMMON NAME	SIZE	CONTAINER	SPACING	REMARKS
CaN	25		Clethra alnifolia 'Novacolein' TM	Summer Sparkler Summersweet	60cm	3 gal.	1m	
Csr	27		Cornus sericea	Red Twig Dogwood	60cm	3 gal.	2m	
CsF	39		Cornus sericea 'Farrow' TM	Arctic Fire Red Twig Dogwood	60cm	3 gal.	1m	
HpG	8		Hydrangea paniculata 'Grandiflora'	PeeGee Panicle Hydrangea	60cm	3 gal.	2m	
HpL	36		Hydrangea paniculata 'Limelight'	Limelight Panicle Hydrangea	60cm	3 gal.	1.75m	
HpB	22		Hydrangea paniculata 'Bomshell'	Bomshell Hydrangea	60cm	3 gal.	1m	
Pol	71		Physocarpus opulifolius 'Little Devil' TM	Little Devil Dwarf Ninebark	60cm	3 gal.	1m	
Sac	7		Sambucus canadensis	Elderberry	60cm	3 gal.	2m	
SyP	52		Syringa meyeri 'Palibin'	Dwarf Korean Lilac	60cm	3 gal.	1.25m	
VI	17		Viburnum lentago	Nannyberry	60cm	3 gal.	2m	
ORNAMENTAL GRASSES		QTY	BOTANICAL NAME	COMMON NAME	SIZE	CONTAINER	SPACING	REMARKS
caK	100		Calamagrostis x acutiflora 'Karl Foerster'	Feather Reed Grass	---	1 gal.	700mm	
msH	22		Miscanthus sinensis 'Huron Blush'	Huron Blush Eulalia Grass	---	1 gal.	750mm	
msP	150		Miscanthus sinensis 'Purpurescens'	Purple Eulalia Grass	---	1 gal.	800mm	
pah	31		Pennisetum alopecuroides 'Hamelin'	Hamelin Fountain Grass	---	1 gal.	600mm	
ssT	80		Schizachyrium scoparium 'The Blues'	The Blues Little Bluestem	---	1 gal.	550mm	
PERENNIALS		QTY	BOTANICAL NAME	COMMON NAME	SIZE	CONTAINER	SPACING	REMARKS
acm	62		Achillea millefolium	Common Yarrow	---	1 gal.	450mm	
epP	107		Echinacea purpurea 'PAS702917' TM	PowWow Wild Berry Coneflower	---	1 gal.	500mm	
HE	153		Hemerocallis x 'Elegant Candy'	Elegant Candy Daylily	---	1 gal.	450mm	



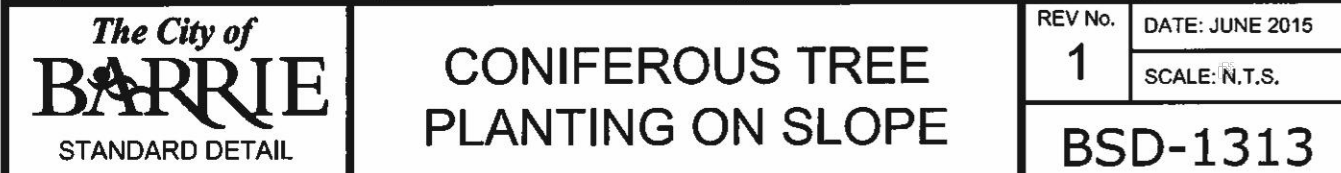
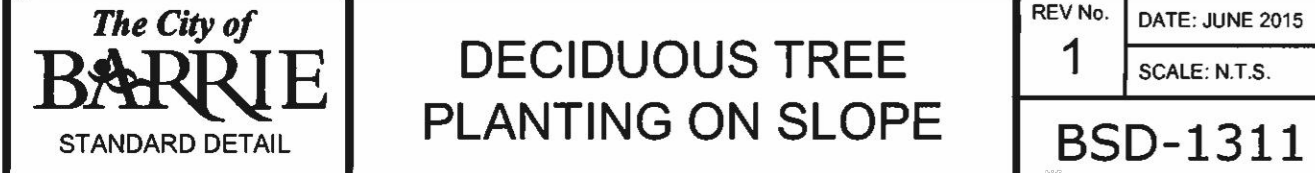


# CENTRAL PIAZZA PLAN PLANTING

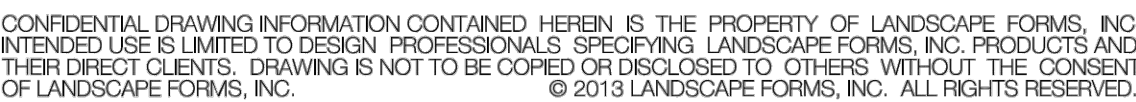
 <p>201 71 Kings Street East Kirkland, Ontario M3C 4Y9 P 905 548 8843 F 905 548 8843</p> <p>162 Kings Street South, Suite 200 Kirkland, Ontario L3P 4K6 P 905 552 3077 F 905 552 3077</p> <p><a href="http://www.gspgroup.ca">www.gspgroup.ca</a></p>		L-2.3
Date: February 22, 2022	Drawn By: OW	
Scale: 1:500	Project No: 220058	

L-2.3









①



②

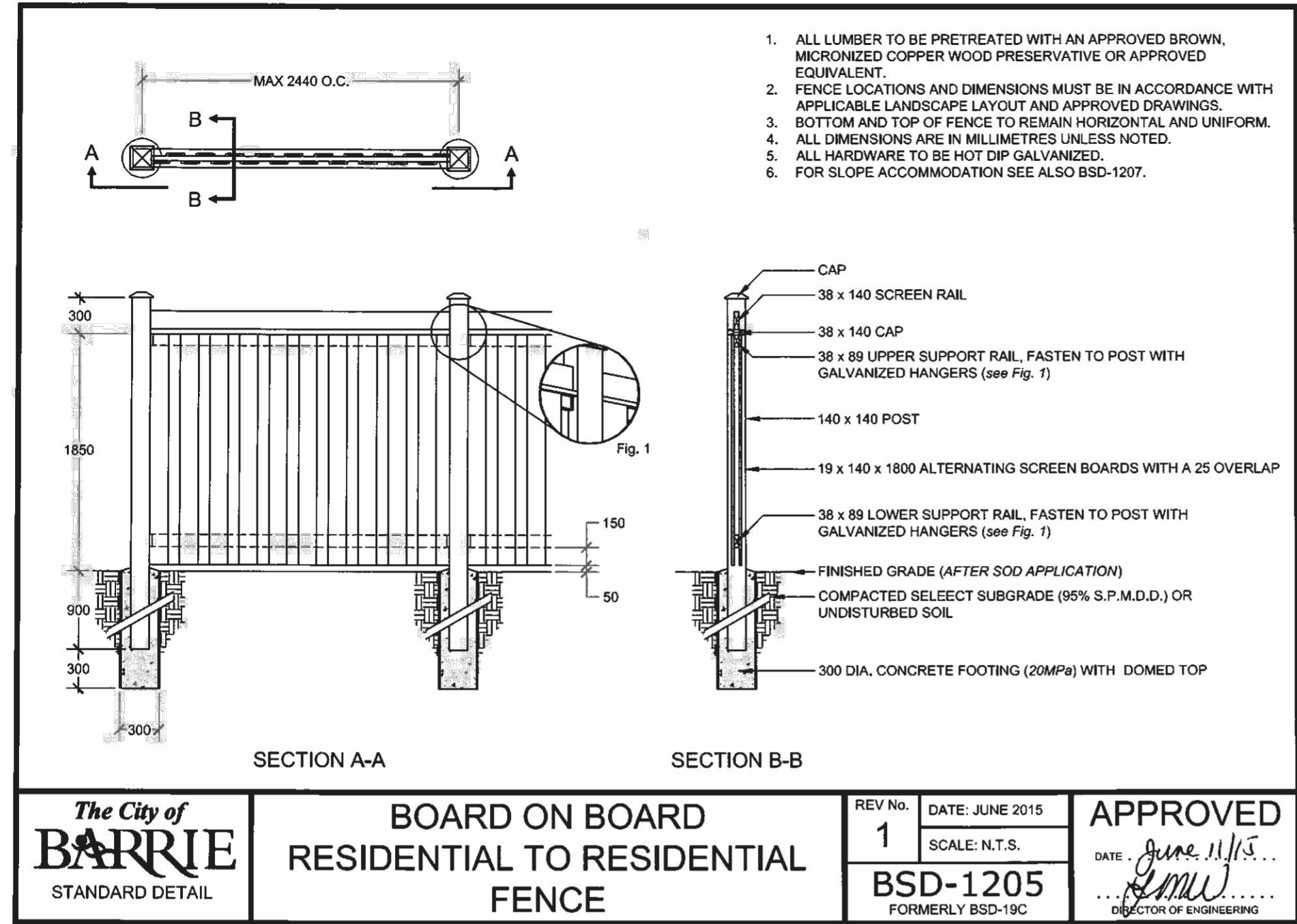


## ③

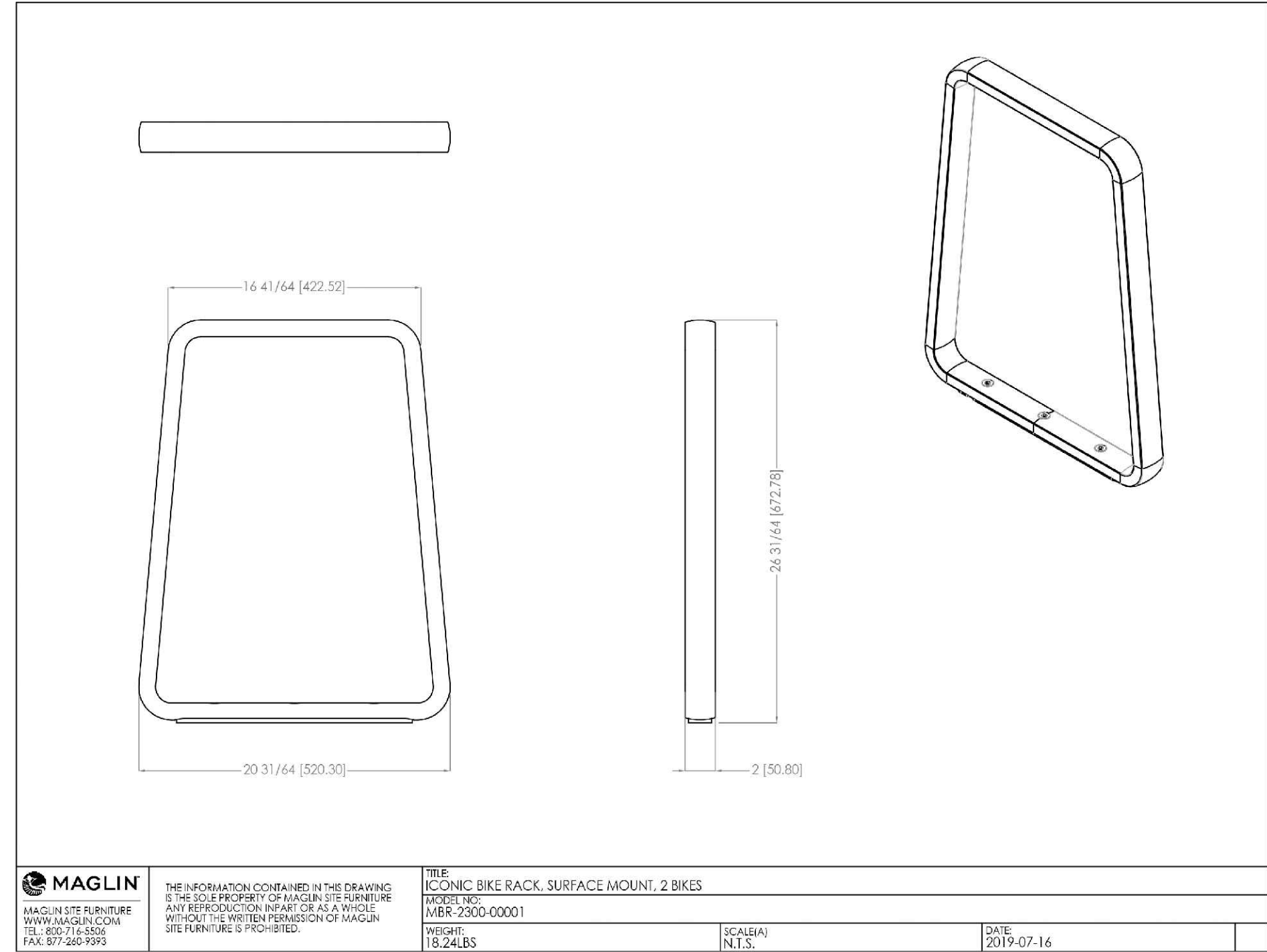


L-3.2

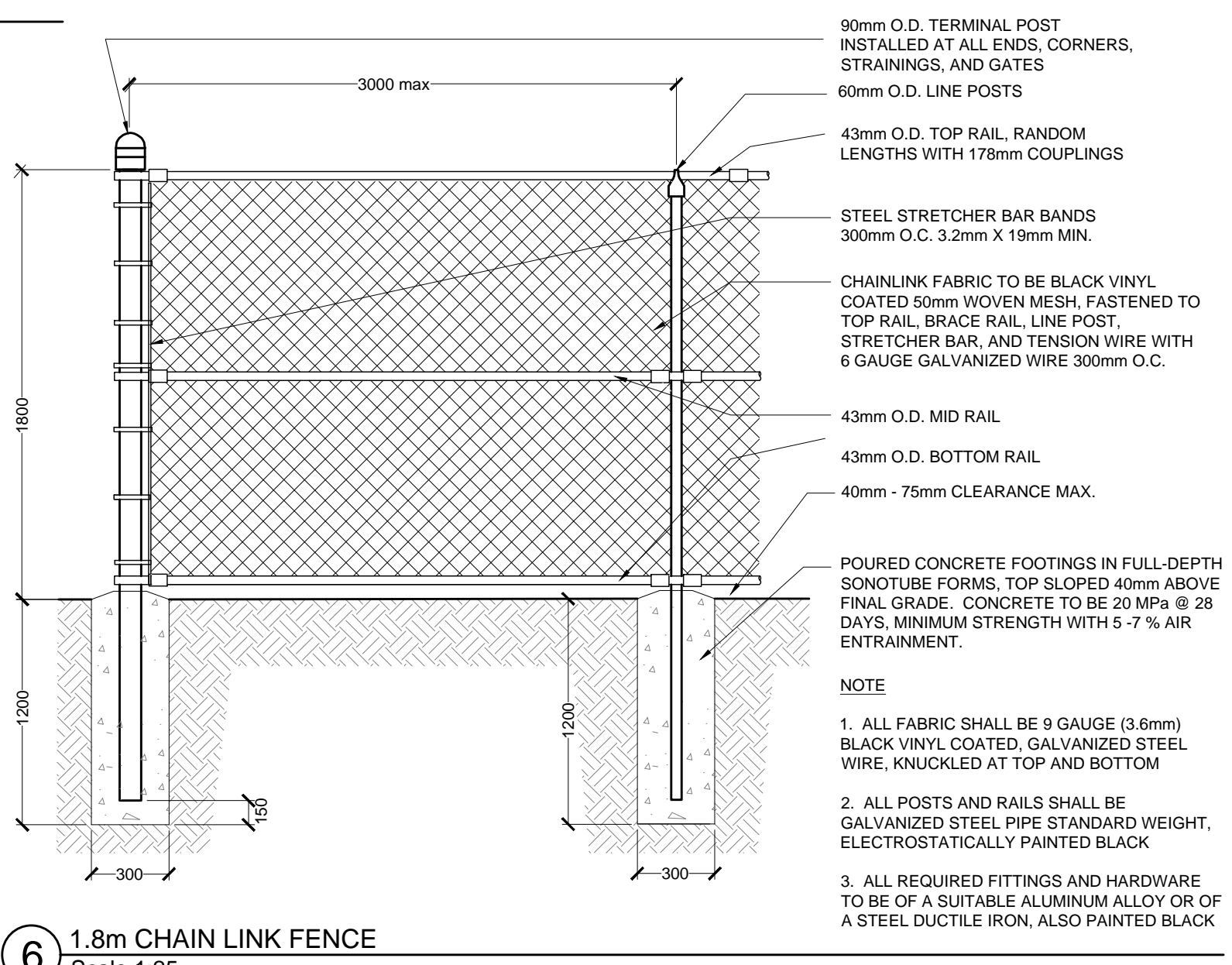
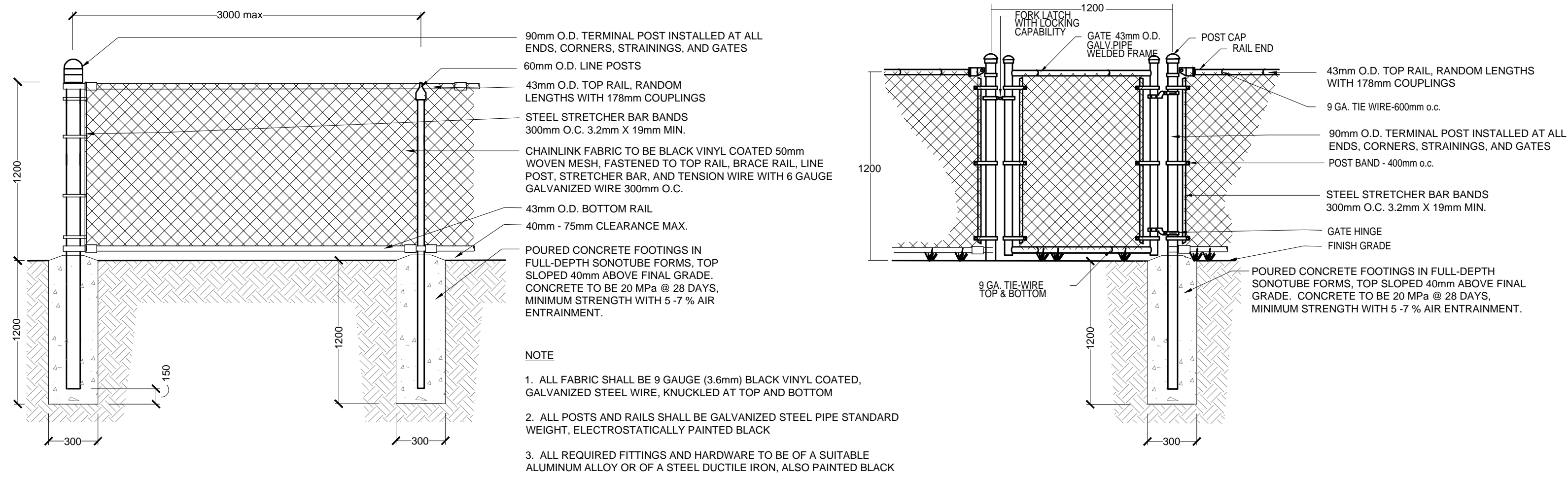
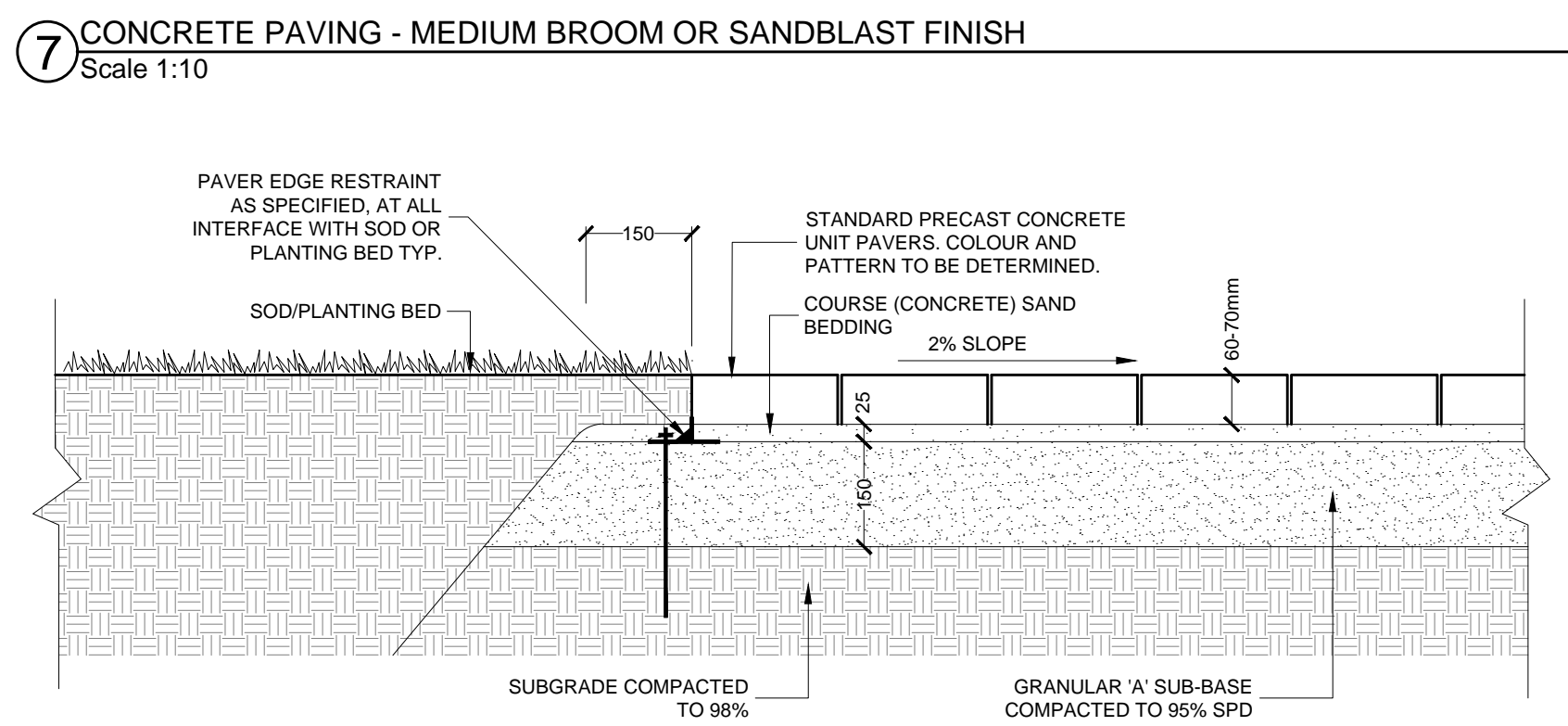
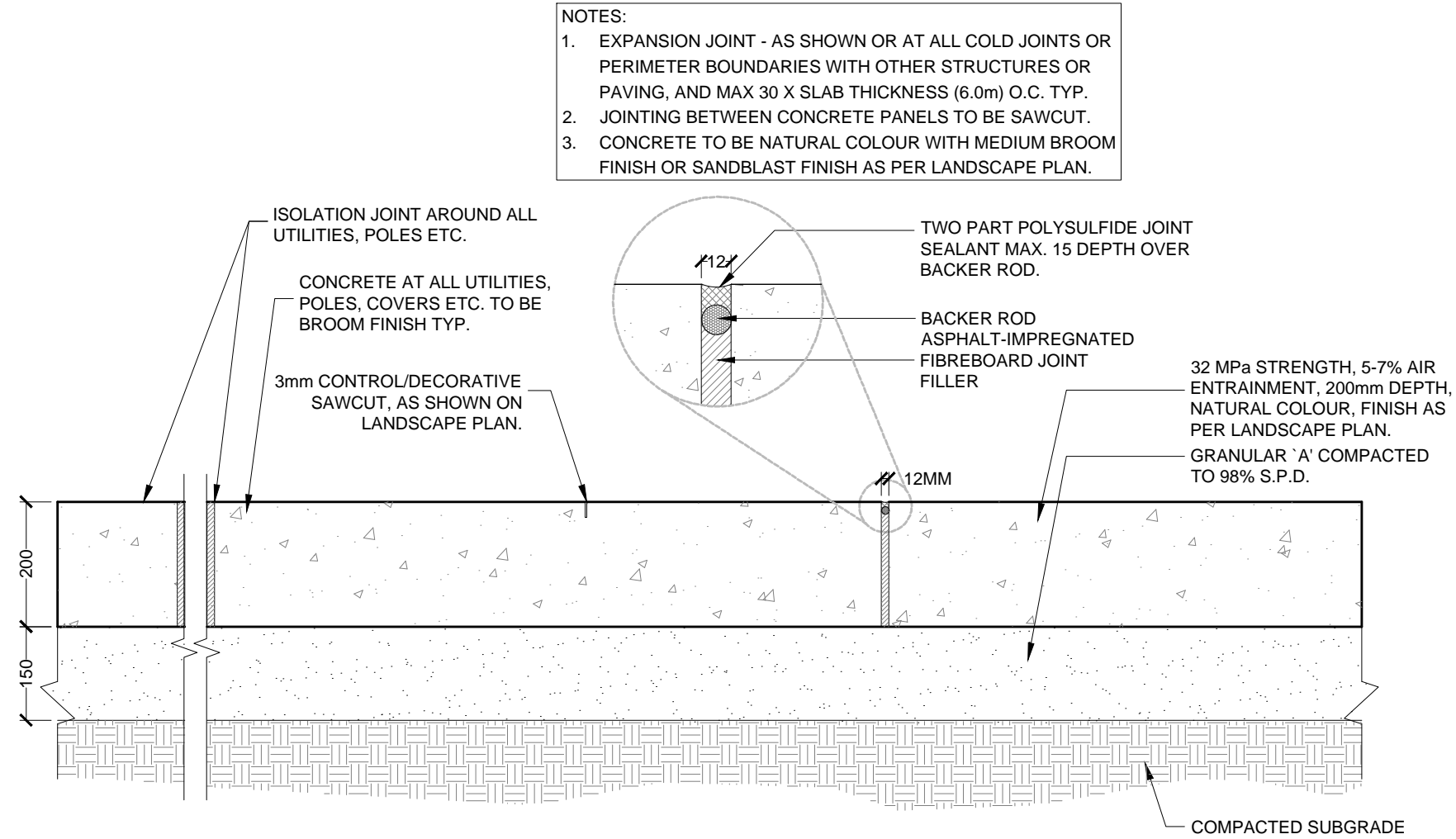
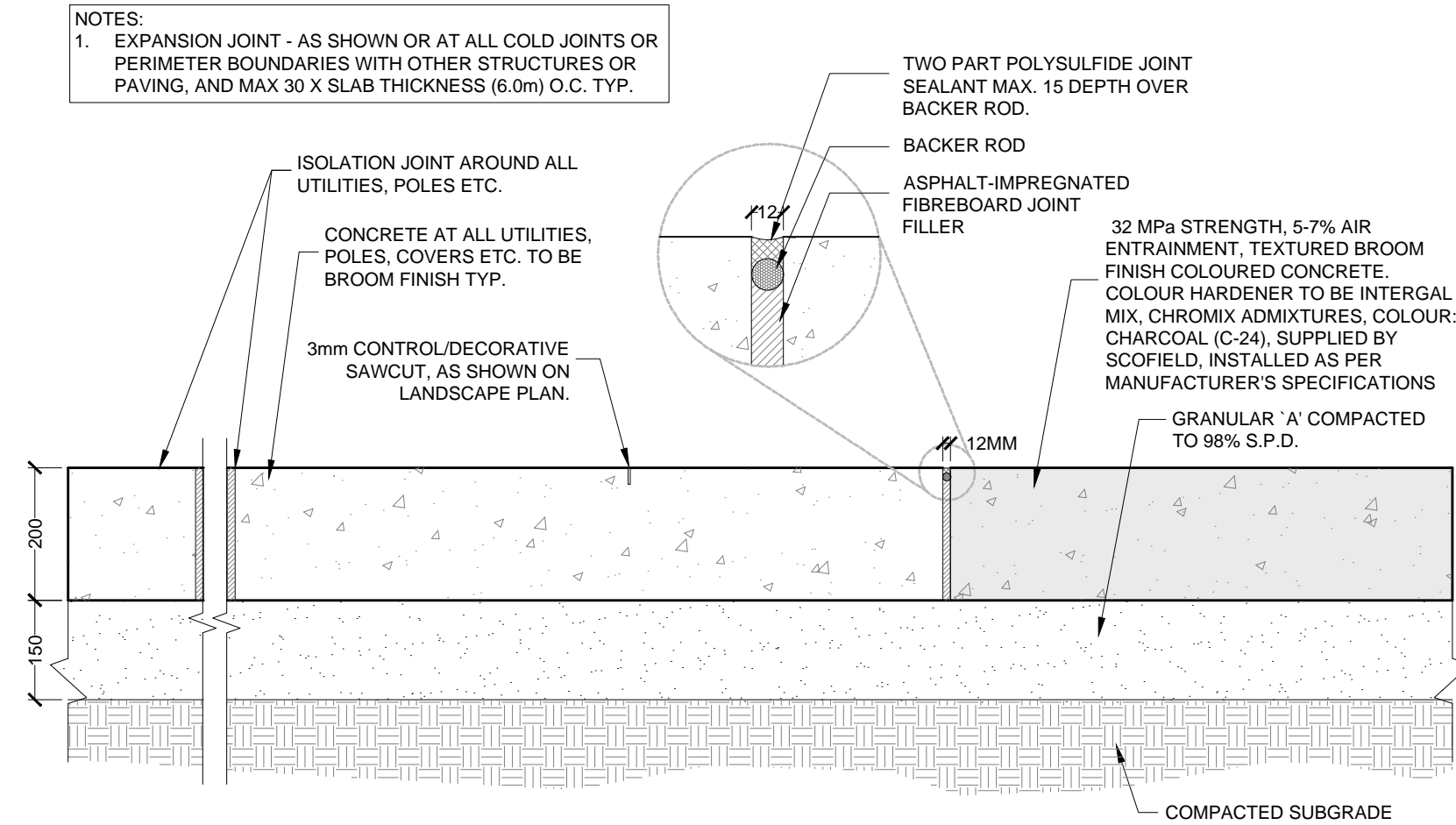
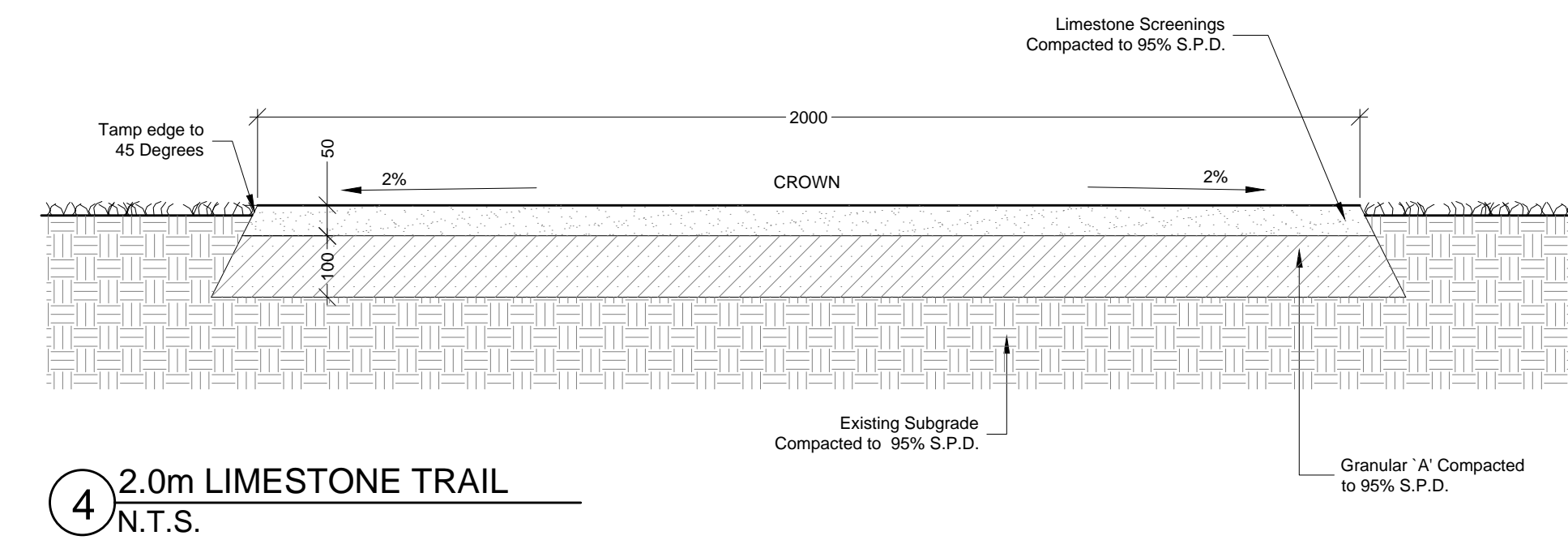
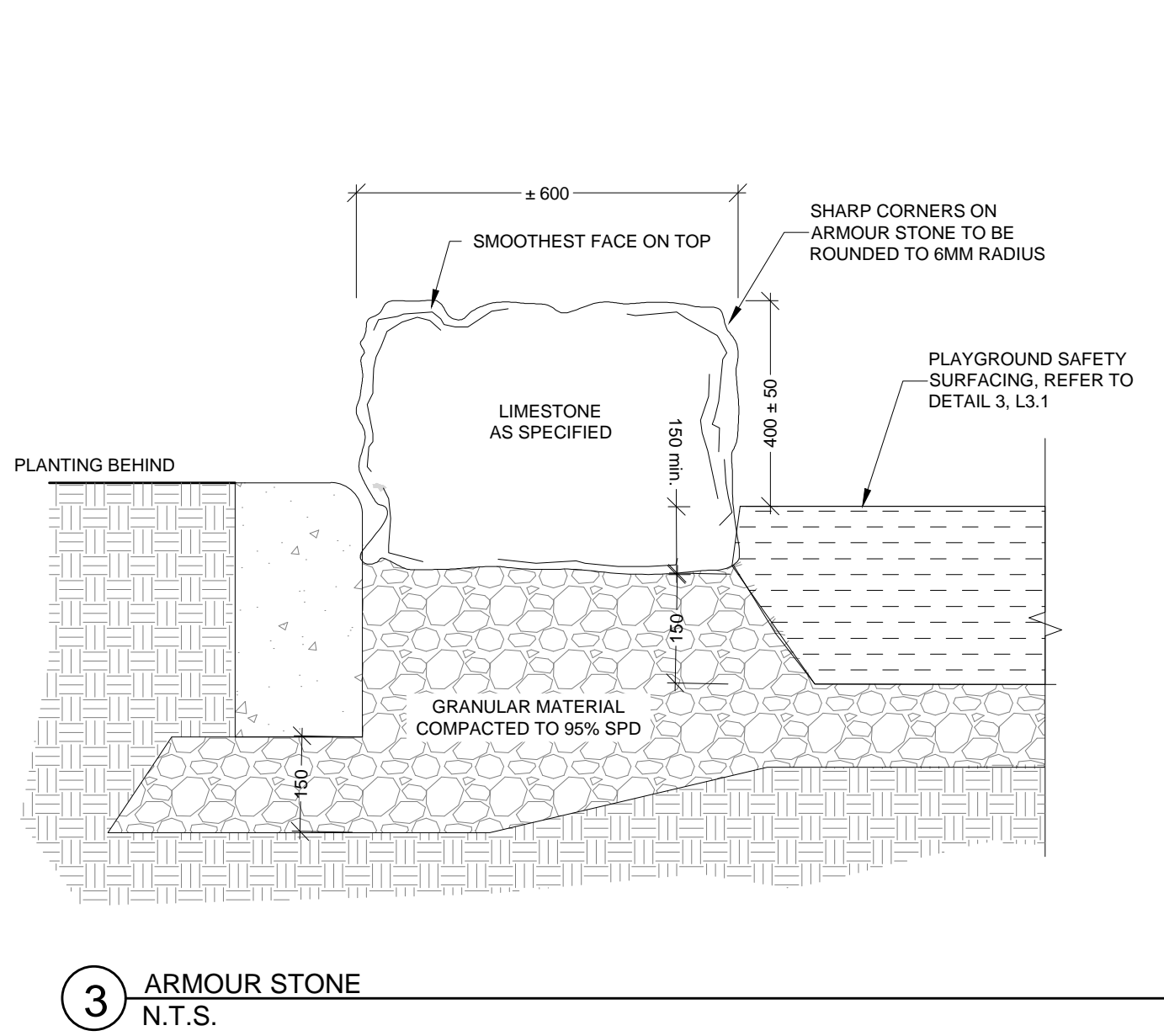




1 BOARD ON BOARD WOOD FENCING  
N.T.S.



2 MAGLIN BIKE RACK  
N.T.S.



## DETAILS

10-24 GROVE STREET, BARRIE, ON  
FILE: D11-021-2021

ISSUED FOR SITE PLAN  
APPROVAL, NOT FOR  
CONSTRUCTION.



DATE	ISSUE	BY
Mar. 11, 2022	Issued for Coordination	OW
Mar. 22, 2022	Issued for SPA #2	OW
DATE	REVISIONS	BY



201-12 Victoria Street South  
Kitchener, Ontario N2G 4Y9  
T: 519-581-8883  
F: 519-581-8842

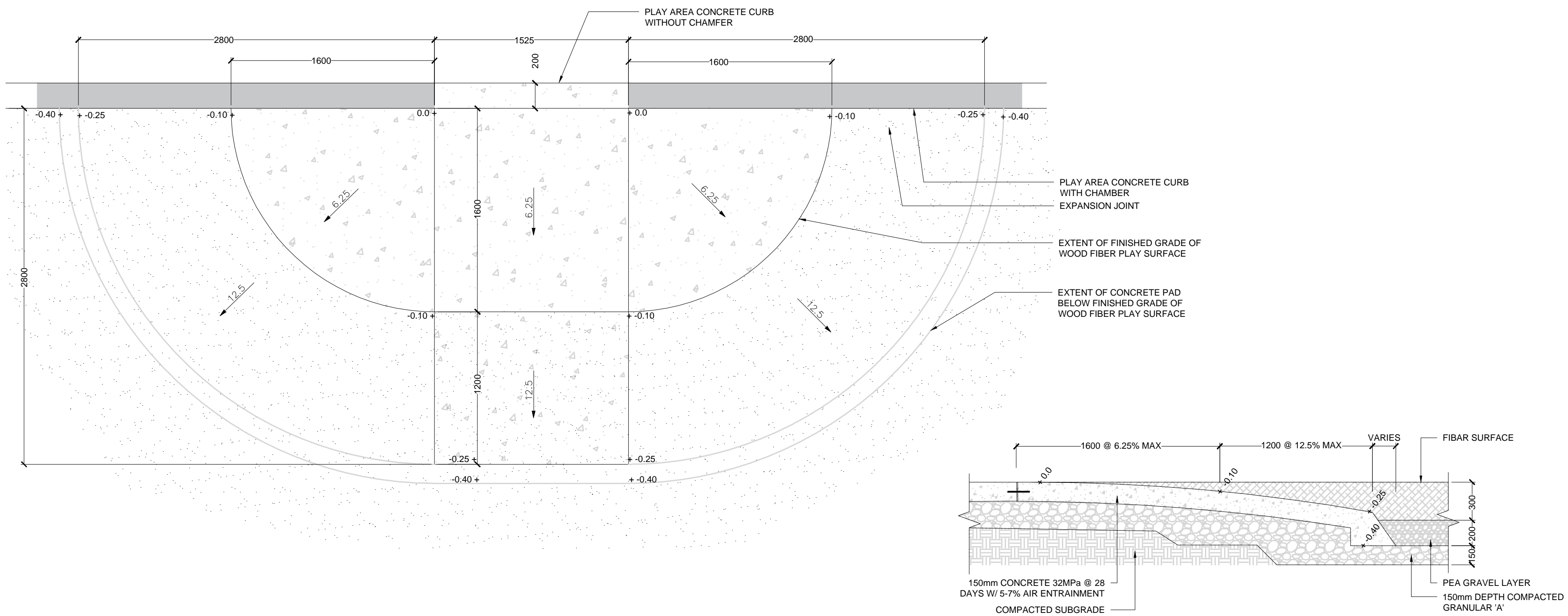
www.gspgroup.ca

Date: February 22, 2022  
Scale: As Noted

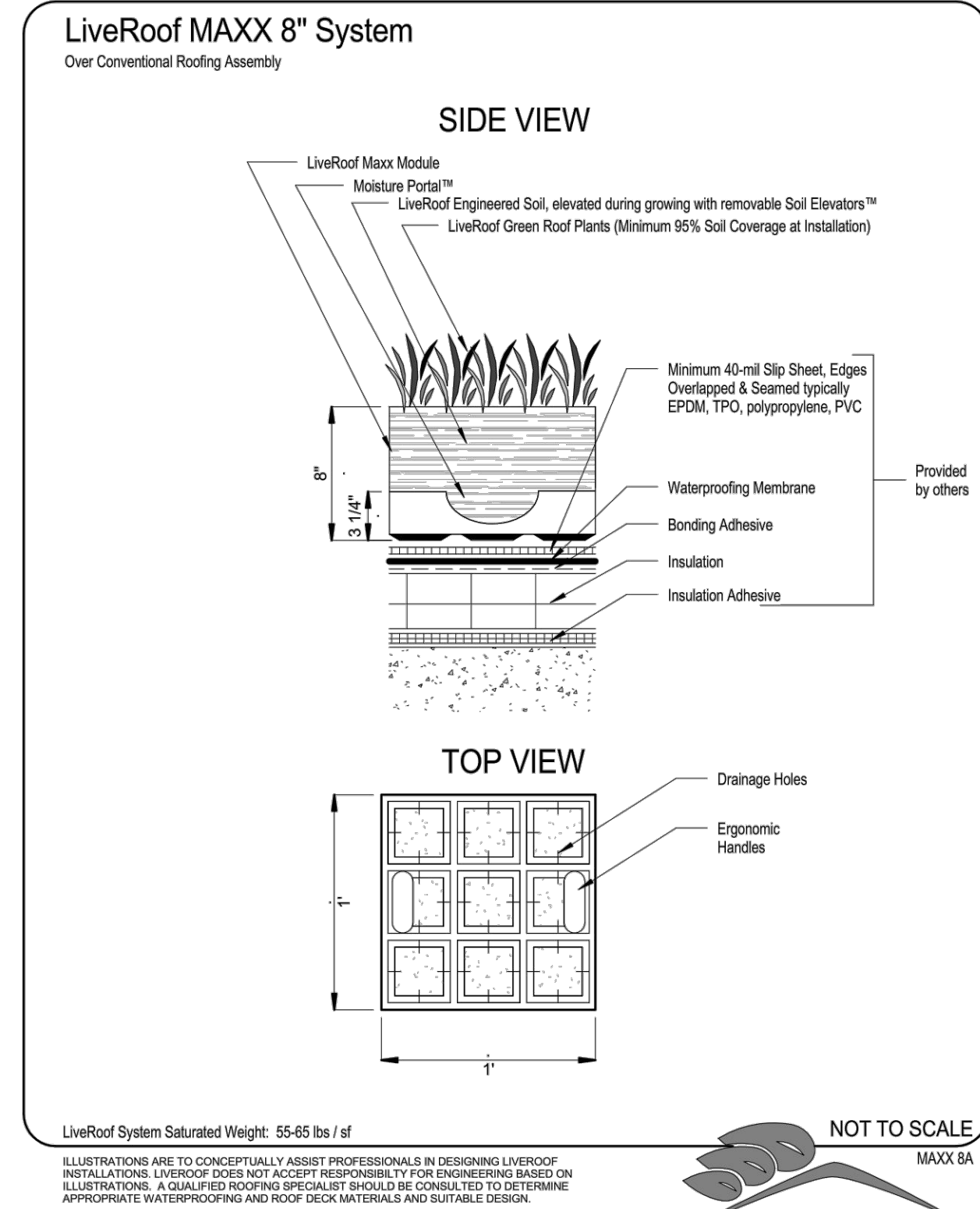
Drawn By: OW  
Project No.: 22058

L-3.3

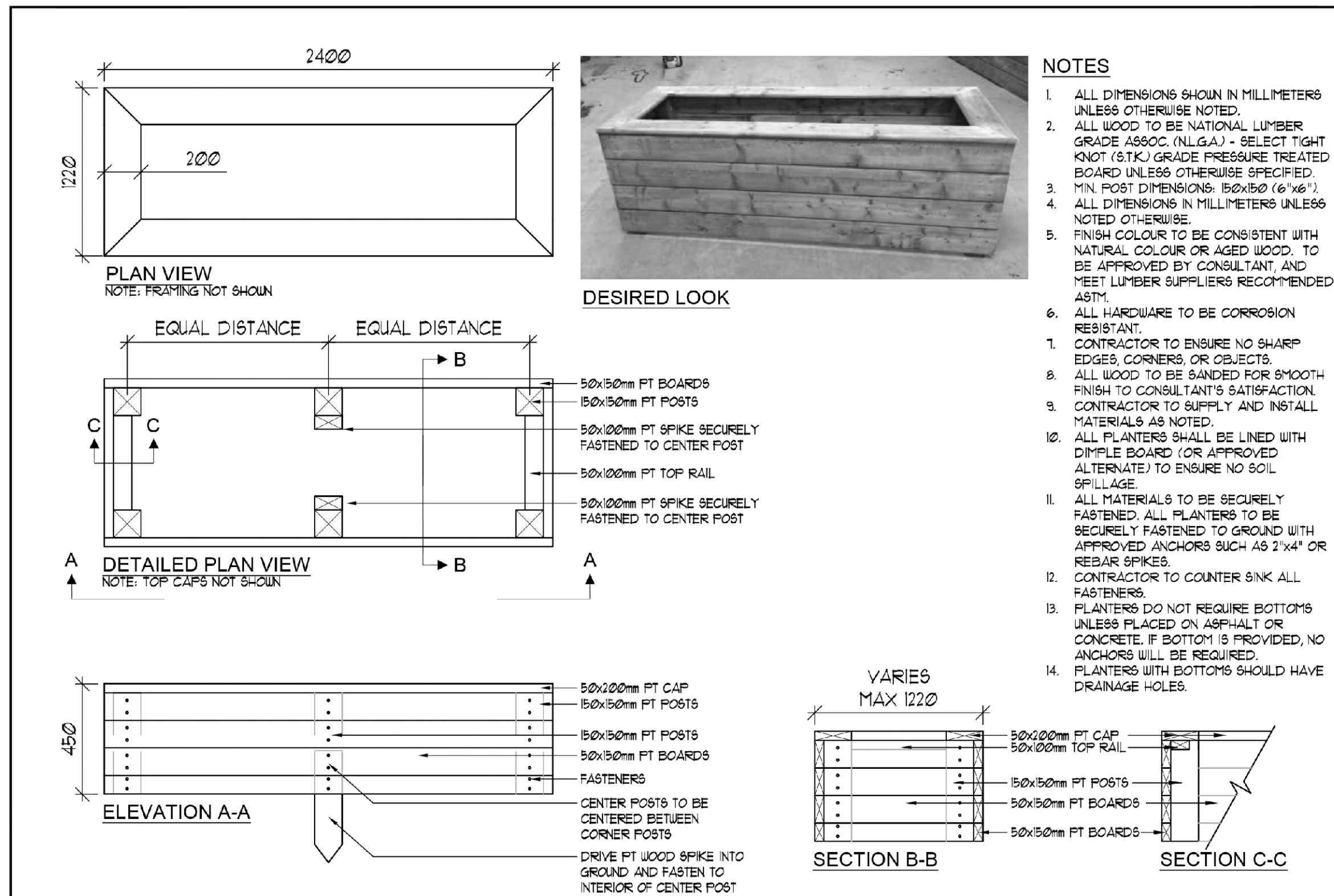




① CONCRETE ACCESS RAMP AT PLAY SURFACING  
N.T.S.

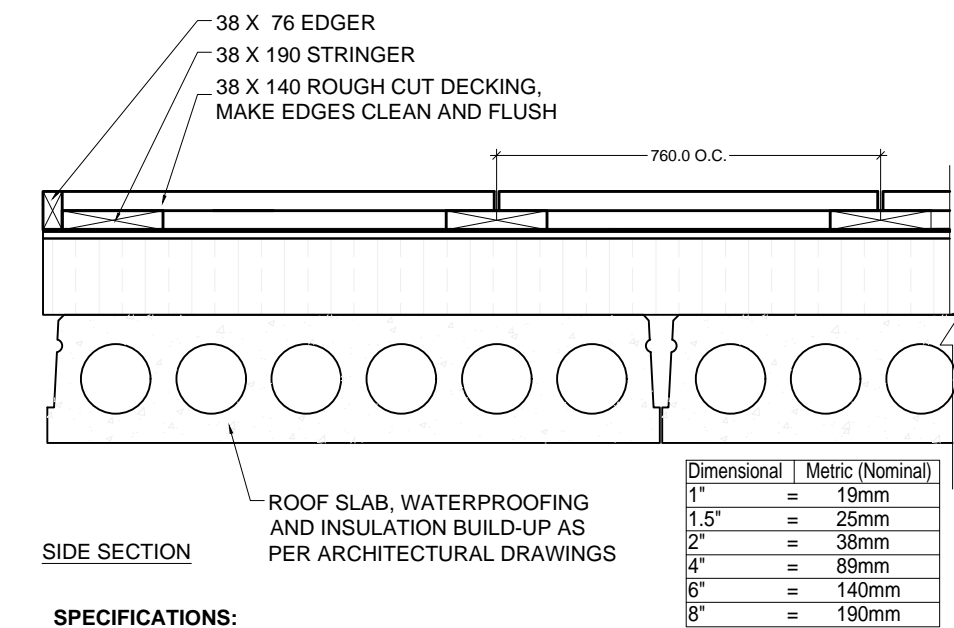


④ LIVEROOF GREEN ROOF  
N.T.S.



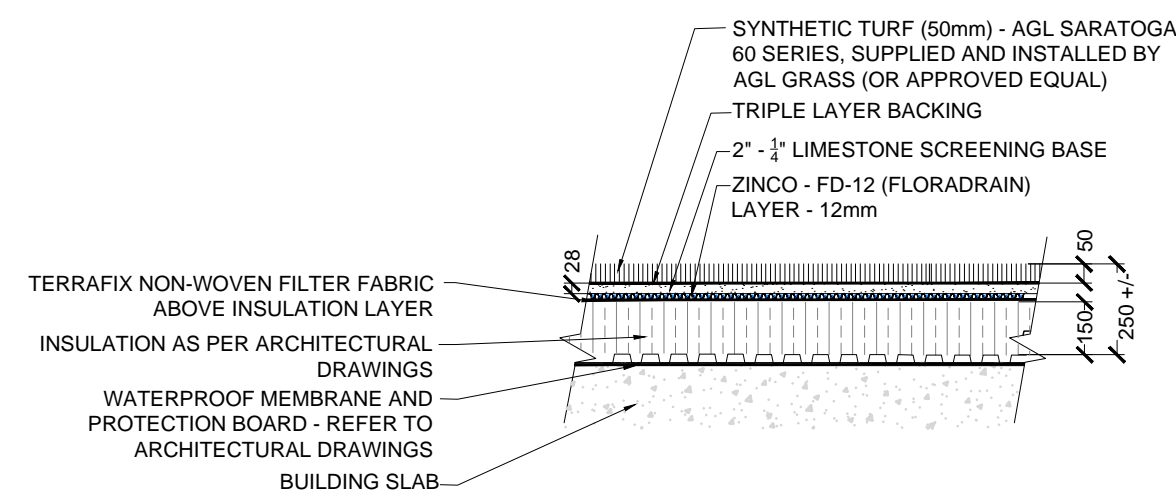
1'- 6"HT (450mm) RAISED WOOD GARDEN PLANTER  
N.T.S.

⑤ RAISED COMMUNITY GARDEN PLANTERS  
N.T.S.

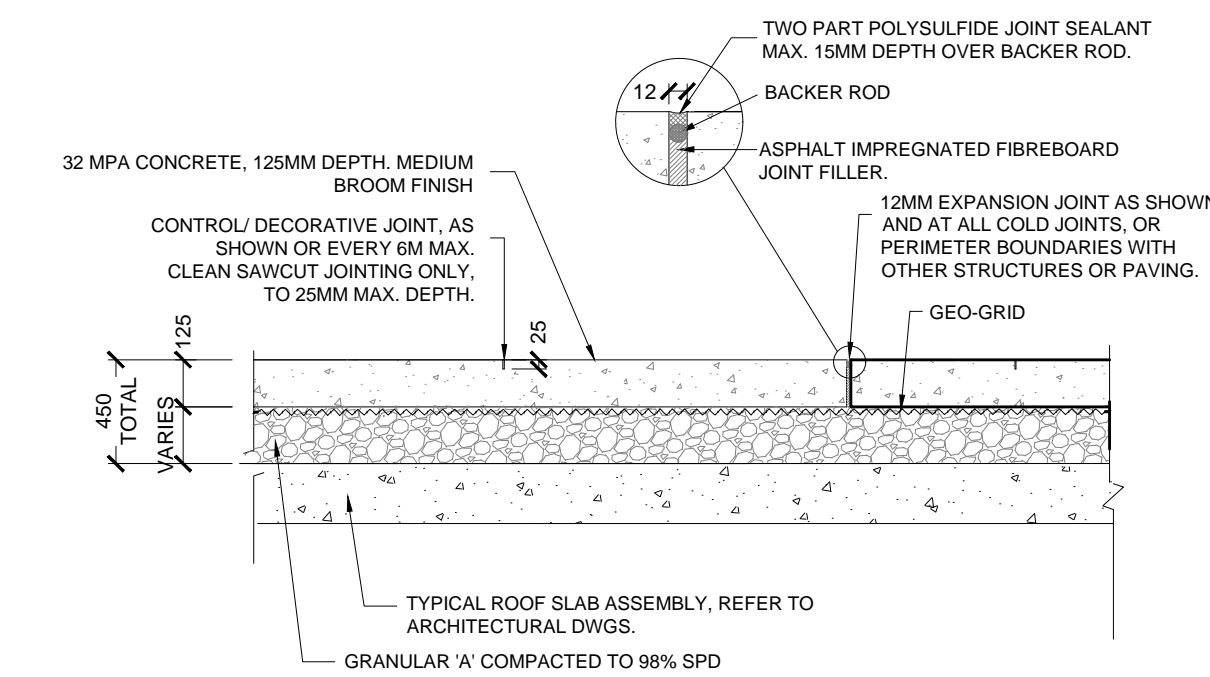


- SPECIFICATIONS:**
1. DECK MATERIAL TO BE DETERMINED - WOOD OR COMPOSITE. ALL WOOD TO BE NO. 1 CONSTRUCTION GRADE CEDAR, OR PRESSURE-TREATED AS DETERMINED BY OWNER, AND FREE OF EXCESSIVE CHIPS, CRACKS, WARPS OR KNOTS.
  2. ALL FASTENERS TO BE HOT DIPPED GALVANIZED.
  3. ALL CUTS TO PRESSURE-TREATED WOOD MUST BE TREATED WITH TWO LIBERAL BRUSH COATS OF COPPER-BASED PRESERVATIVE. PRESSURE-TREATED FENCING WITHOUT SUCH TREATMENT WILL NOT BE ACCEPTED.
  4. STAIN AS SPECIFIED.

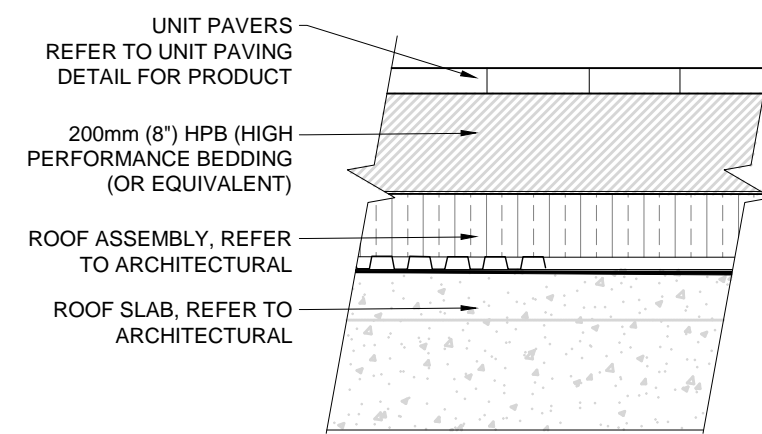
② DECKING ON ROOF DECK  
Scale 1:15



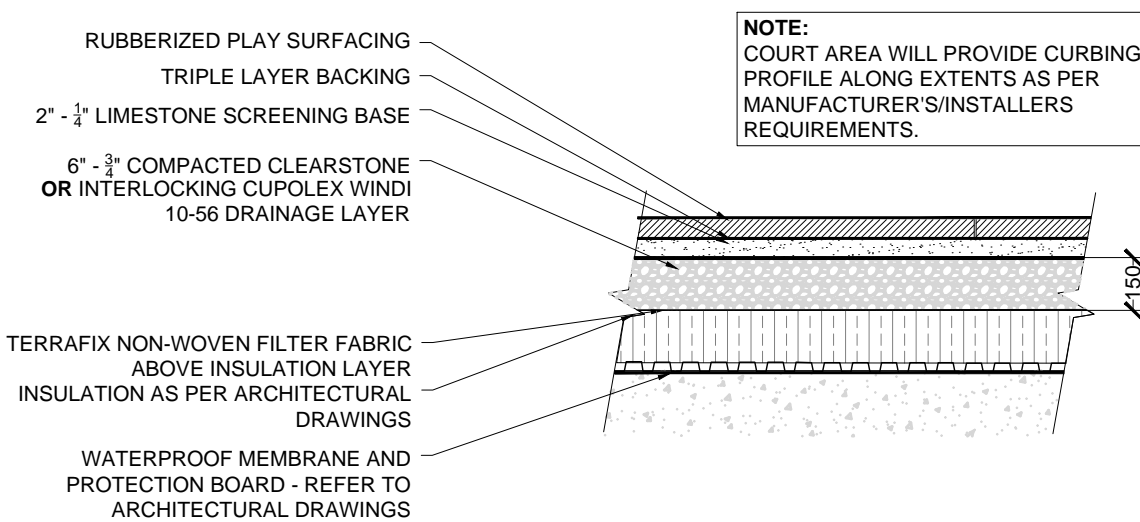
③ TYPICAL PROFILE - SYNTHETIC LAWN  
1:20



⑥ P.I.P. BROOM FINISH CONCRETE PAVING ON ROOF SLAB  
1:20



⑦ UNIT PAVING ON ROOF SLAB  
1:15



⑧ TYPICAL PROFILE - SPORT COURT AREA  
1:20

## DETAILS

10-24 GROVE STREET, BARRIE, ON  
FILE: D11-021-2021

ISSUED FOR SITE PLAN  
APPROVAL, NOT FOR  
CONSTRUCTION.



DATE	ISSUE	BY
Mar. 11, 2022	Issued for Coordination	OW
Mar. 22, 2022	Issued for SPA #2	OW
DATE	REVISIONS	BY



201-12 Victoria Street South  
Kitchener, Ontario N2G 4Y9  
T 519 568 8883  
F 519 568 8643

162 Locke Street South, Suite 200  
Hamilton, Ontario L8P 4A9  
T 905 532 1417

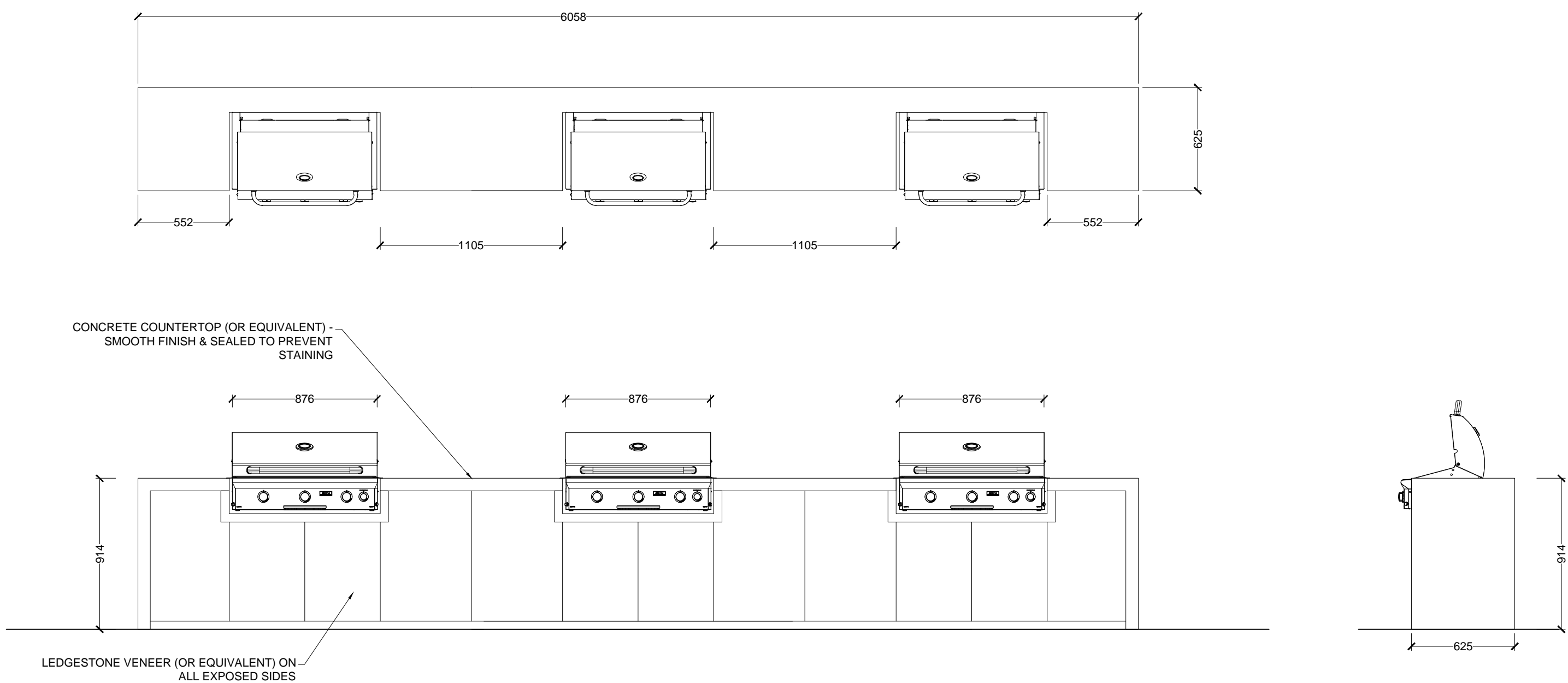
www.gspgroup.ca

Date: February 22, 2022  
Scale: As Noted

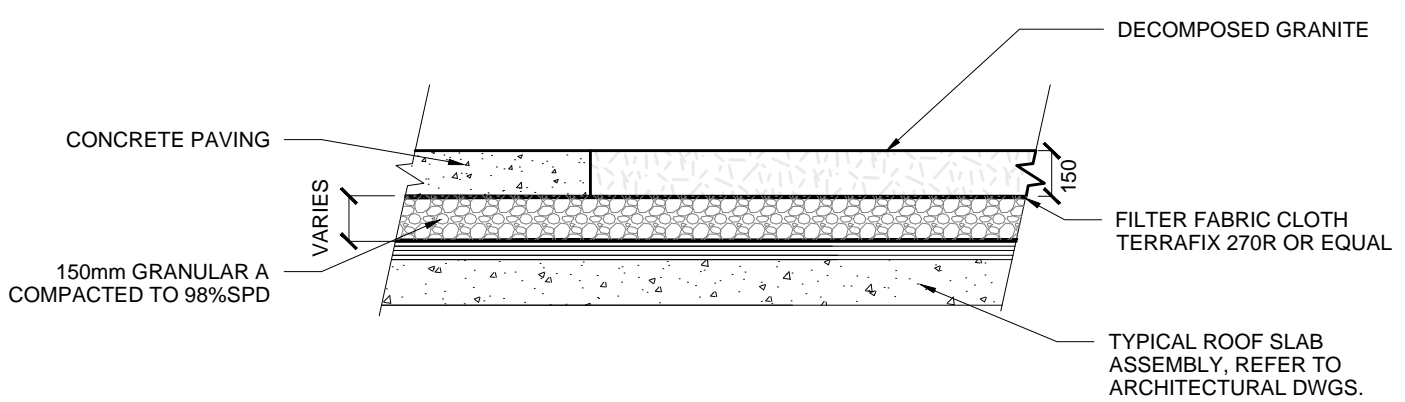
Drawn By: OW  
Project No.: 22058

L-3.4





## 1 INTEGRATED TRIPLE BARBECUE COOKING STATION - DESIGN INTENT



## 2 DECOMPOSED GRANITE ON ROOF DECK

## Pergola, 10' X 14' X 8' H

ST10-A13H-10X14-8 - Pergola

Our 'Pergola' is the ideal solution for any shade requirement. Flexible and versatile, the all-aluminum 4" x 4" post and cross beam construction has been professionally engineered to allow for an infinite number of configurations. Shown here with 1" x 3" aluminum purlins, a variety of inset roof slat sizes and materials are available to choose from. The Pergola incorporates our proprietary Connectr System to ensure that each design is as fluid as possible, while still meeting the requisite load and wind analysis. The Hauser Connectr System, consisting of custom engineered Connectr Blocks and stainless steel countersunk hardware, ensures that each beam and column connection is seamless, strong and virtually undetectable. Built-in surface mount plates with concealed covers provide the finishing element to secure the connection. The core frame has been designed to accept a variety of lighting, charging and heat options. Create your own custom size and shape.

**HAUSER**  
SITE FURNITURE

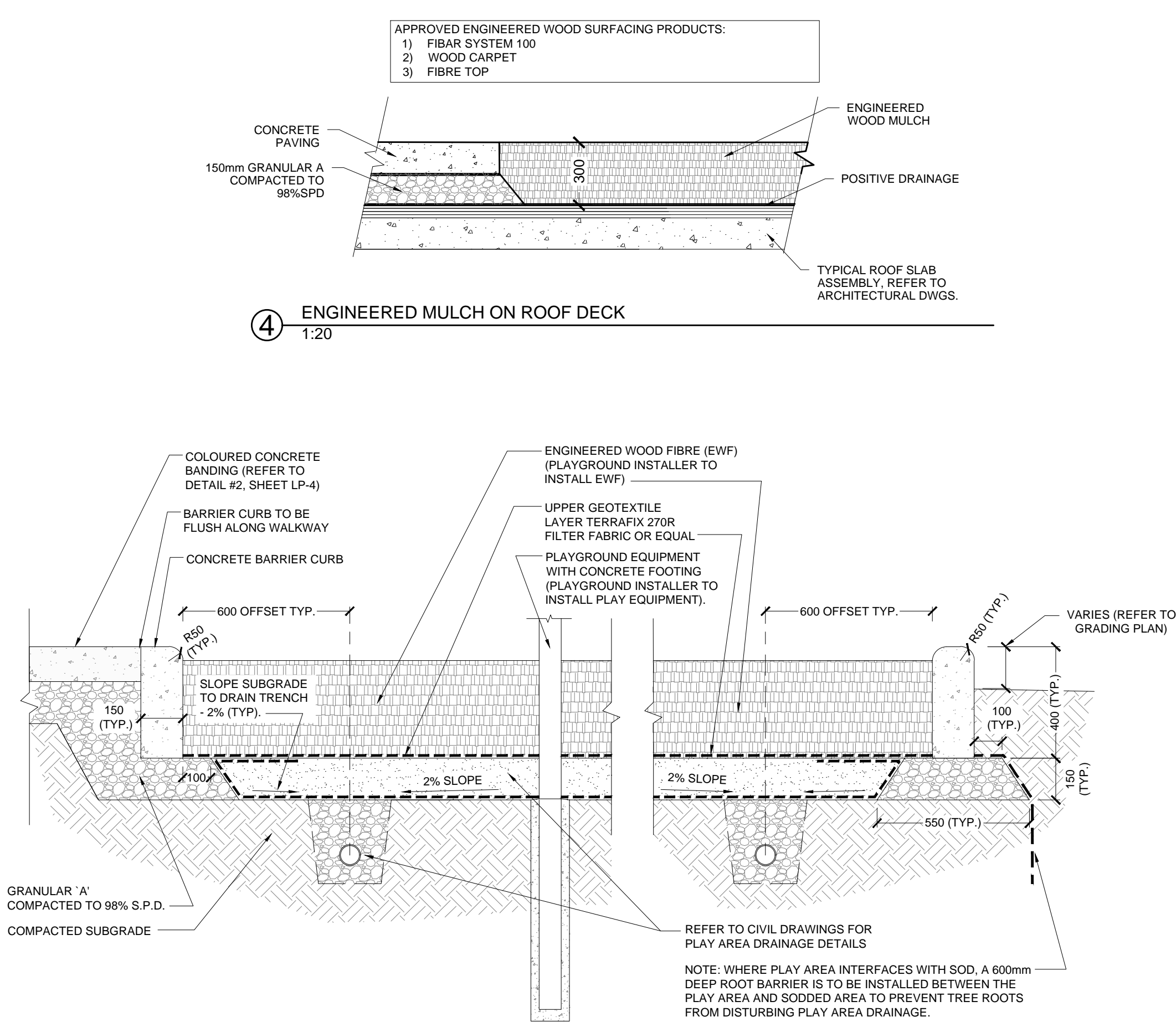
Width: 168" (426.7 cm)  
Depth: 120" (304.8 cm)  
Height: 96" (243.8 cm)



sales@hausersite.com | 1-800-268-7328 | hausersite.com

## 3 ROOF TOP SHADE STRUCTURES

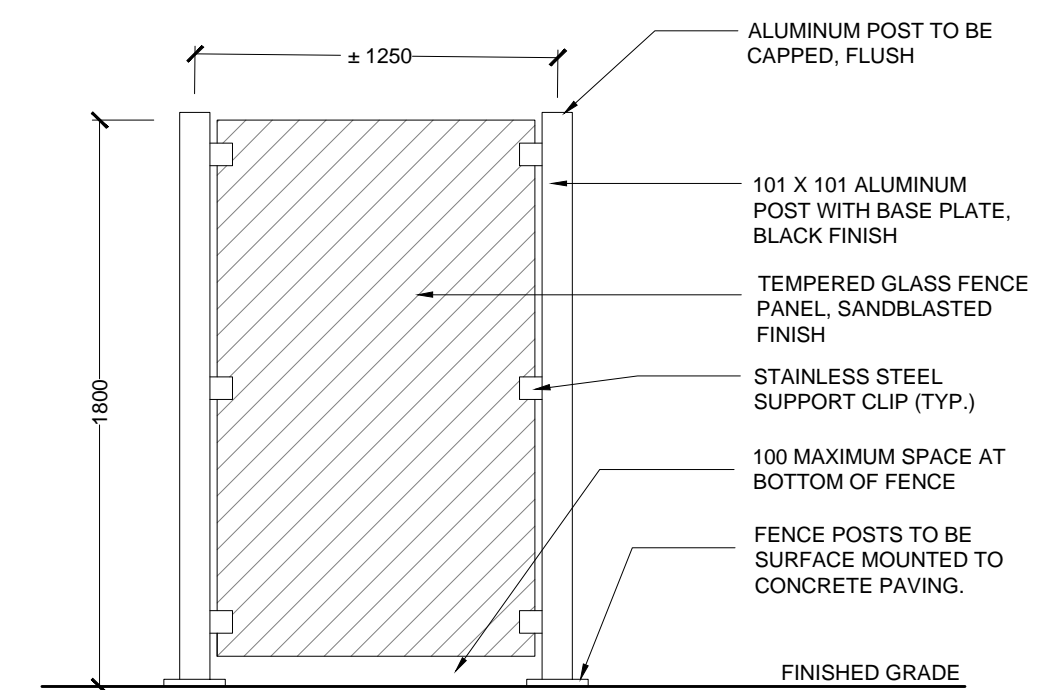
N.T.S.



- NOTE:
1. ALL MEASUREMENTS IN MILLIMETERS UNLESS OTHERWISE STATED.
  2. ALL WORK TO BE CARRIED OUT TO CURRENT APPLICABLE CHILDREN PLAY SPACES AND EQUIPMENT NATIONAL STANDARDS OF CANADA.
  3. CONTRACTOR TO COORDINATE WORK WITH PLAY EQUIPMENT MANUFACTURER PRIOR TO CONSTRUCTION. CONTRACTOR TO SUBMIT SHOP DRAWING SECTION OF PLAYGROUND ILLUSTRATING ALL EQUIPMENT FOOTINGS, SURFACING AND BORDERING EDGING, INCLUDING PROPOSED GRADES FROM CENTRE OF PLAYGROUND TO CURB EDGE AT THE GREATEST DISTANCE.
  4. ALL PLAY STRUCTURE FOOTINGS TO BE INSTALLED BY PLAYGROUND EQUIPMENT CONTRACTOR.
  5. CONCRETE BARRIER CURBS SHALL BE 32 MPa C.I.P. CONCRETE CURB WITH BROOM FINISH. CONTINUOUS SAW CUT JOINTS SPACED AT 3650mm O.C. ADJACENT SURFACE TO BE FLUSH WITH TOP OF CURB. BACK OF CURB EDGE TO BE HAND TOWELED WITH 5mm RADIUS ON BACK OF CURB FOR PATHWAY ADJACENT EDGE AND 50mm RADIUS ON BACK OF CURB FOR TURF AND/OR PLANTING AREA ADJACENT EDGE.
  6. ENGINEERED WOOD FIBER: PLAYGROUND EQUIPMENT CONTRACTOR TO INSTALL PLAY SURFACE MATERIAL CSA APPROVED ENGINEERED WOOD FIBER ON FILTER CLOTH TO A MINIMUM DEPTH OF 350mm, PLACED IN THREE SEPARATE, COMPACTED LIFTS OF EQUAL THICKNESS.
  7. CONTRACTOR TO MAINTAIN WOOD FIBER LEVEL UNTIL FINAL ACCEPTANCE.
  8. AFTER PRELIMINARY ACCEPTANCE BY CITY STAFF OF PLAY EQUIPMENT AND SURFACING, A ONE MONTH MAINTENANCE PERIOD WILL BE INITIATED UPON COMPLETION. THE CONTRACTOR IS RESPONSIBLE TO TOP UP EWF SURFACING TO EXISTING GRADE TO SATISFACTION OF CITY STAFF.
  9. REFER TO SPECIFICATIONS FOR ALL MATERIALS AND INSTALLATIONS.

## 5 PLAY AREA SURFACE, DRAINAGE AND CURBING

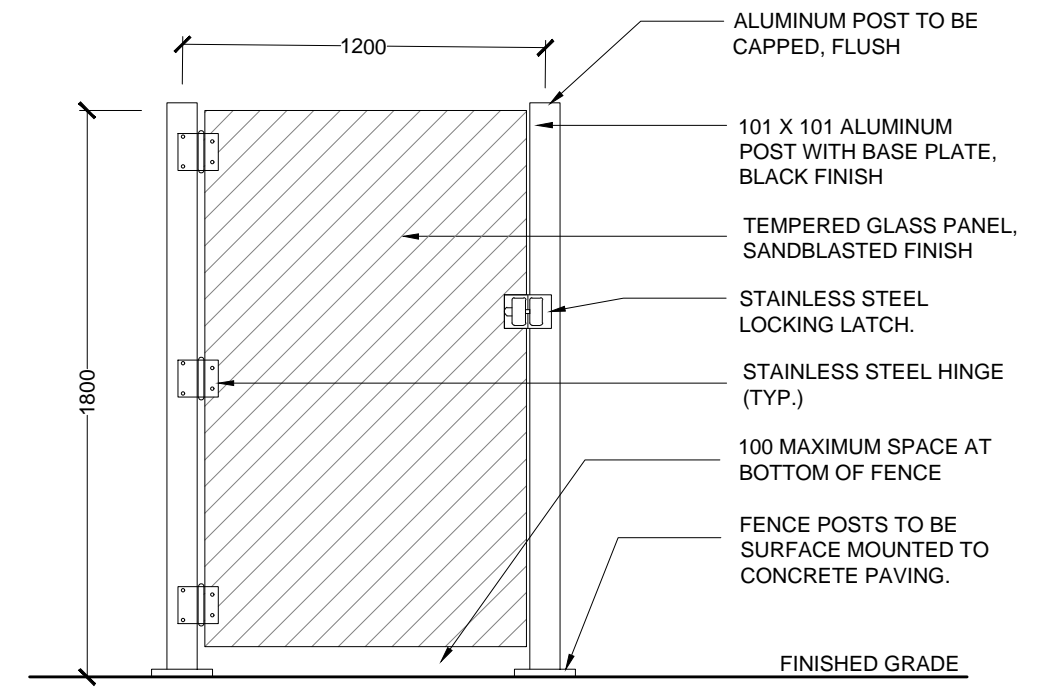
1:15



- NOTES:
1. FENCING MATERIALS TO BE FURNISHED BY PERMACORP (permacorp.com) OR APPROVED EQUAL.
  2. REFER TO MANUFACTURER'S SPECIFICATIONS AND DETAILS FOR FENCING INSTALLATION.
  3. ALL FASTENERS TO BE HOT DIPPED GALVANIZED.
  4. FENCING TO BE APPROVED BY LANDSCAPE ARCHITECT PRIOR TO INSTALLATION.
  5. SHOP DRAWINGS TO BE PROVIDED PRIOR TO CONSTRUCTION.

## 6 SANDBLASTED GLASS PRIVACY FENCE

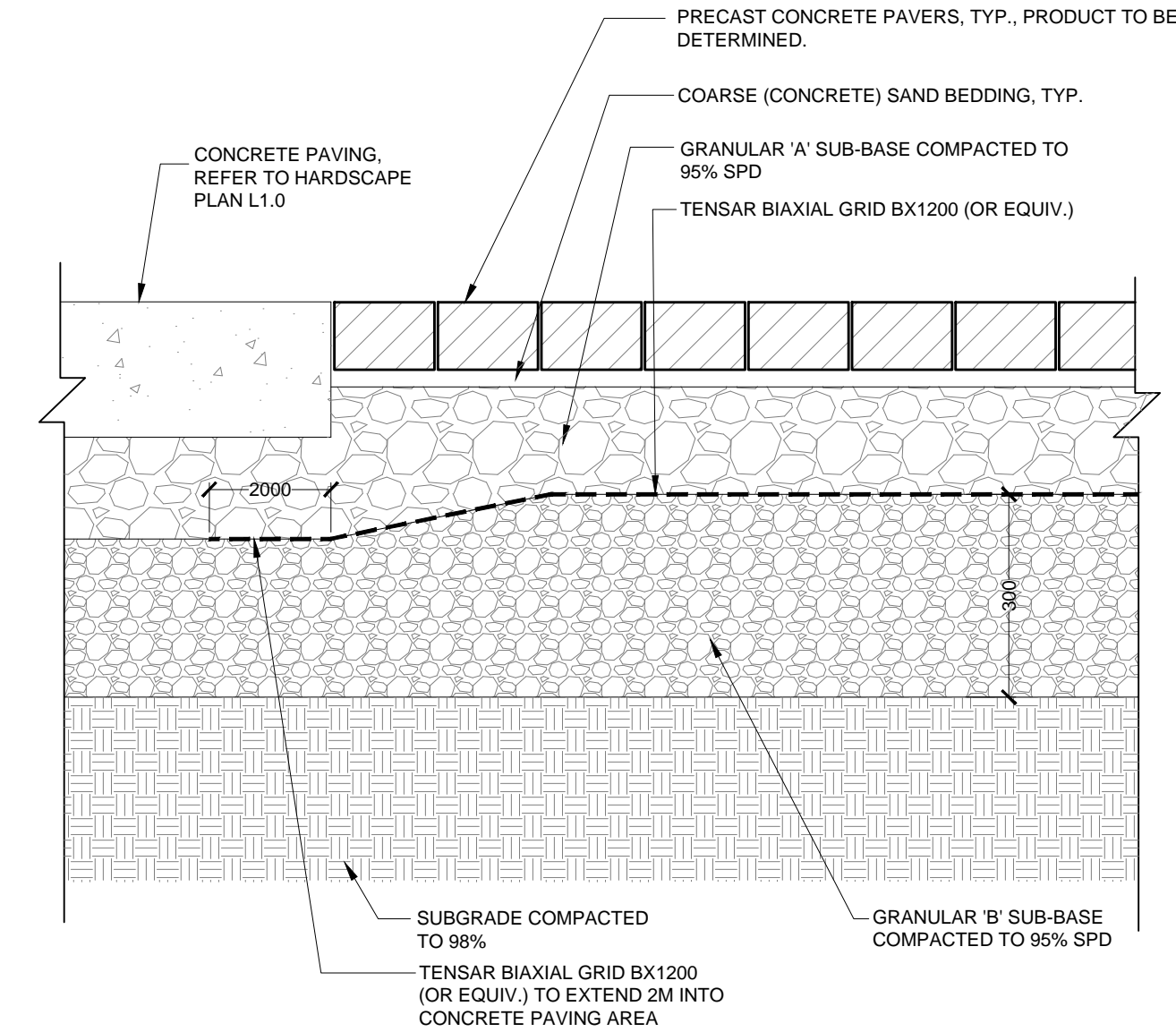
Scale 1:25



- NOTES:
1. GATE MATERIALS TO BE FURNISHED BY PERMACORP (permacorp.com) OR APPROVED EQUAL.
  2. REFER TO MANUFACTURER'S SPECIFICATIONS AND DETAILS FOR GATE INSTALLATION.
  3. ALL FASTENERS TO BE HOT DIPPED GALVANIZED.
  4. FENCING TO BE APPROVED BY LANDSCAPE ARCHITECT PRIOR TO INSTALLATION.
  5. SHOP DRAWINGS TO BE PROVIDED PRIOR TO CONSTRUCTION.

## 7 SANDBLASTED GLASS GATE

Scale 1:25



## 8 UNIT PAVING - VEHICULAR GRADE

Scale 1:10

## DETAILS

10-24 GROVE STREET, BARRIE, ON  
FILE: D11-021-2021

ISSUED FOR SITE PLAN  
APPROVAL, NOT FOR  
CONSTRUCTION.



DATE	ISSUE	BY
Mar. 11, 2022	Issued for Coordination	OW
Mar. 22, 2022	Issued for SPA #2	OW
DATE	REVISIONS	BY



201-12 Victoria Street South  
Kitchener, Ontario N2Y 4Y9  
T: 519.548.8883  
F: 519.548.8842

162 Locke Street South, Suite 200  
Hamilton, Ontario L8P 4A9  
T: 905.532.1417

www.gspgroup.ca

Date: February 22, 2022  
Scale: As Noted

Drawn By: OW  
Project No.: 22058

L-3.5