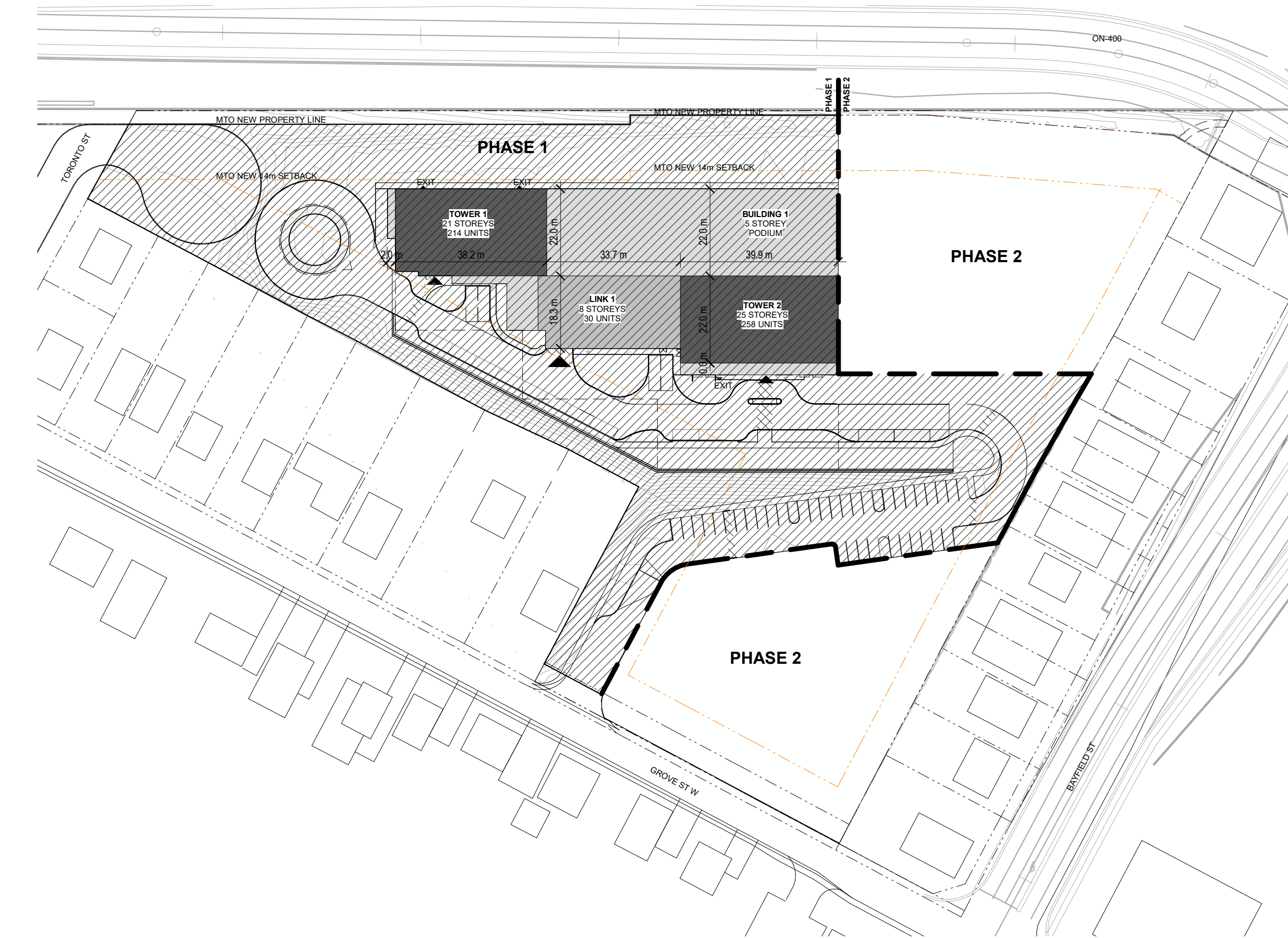
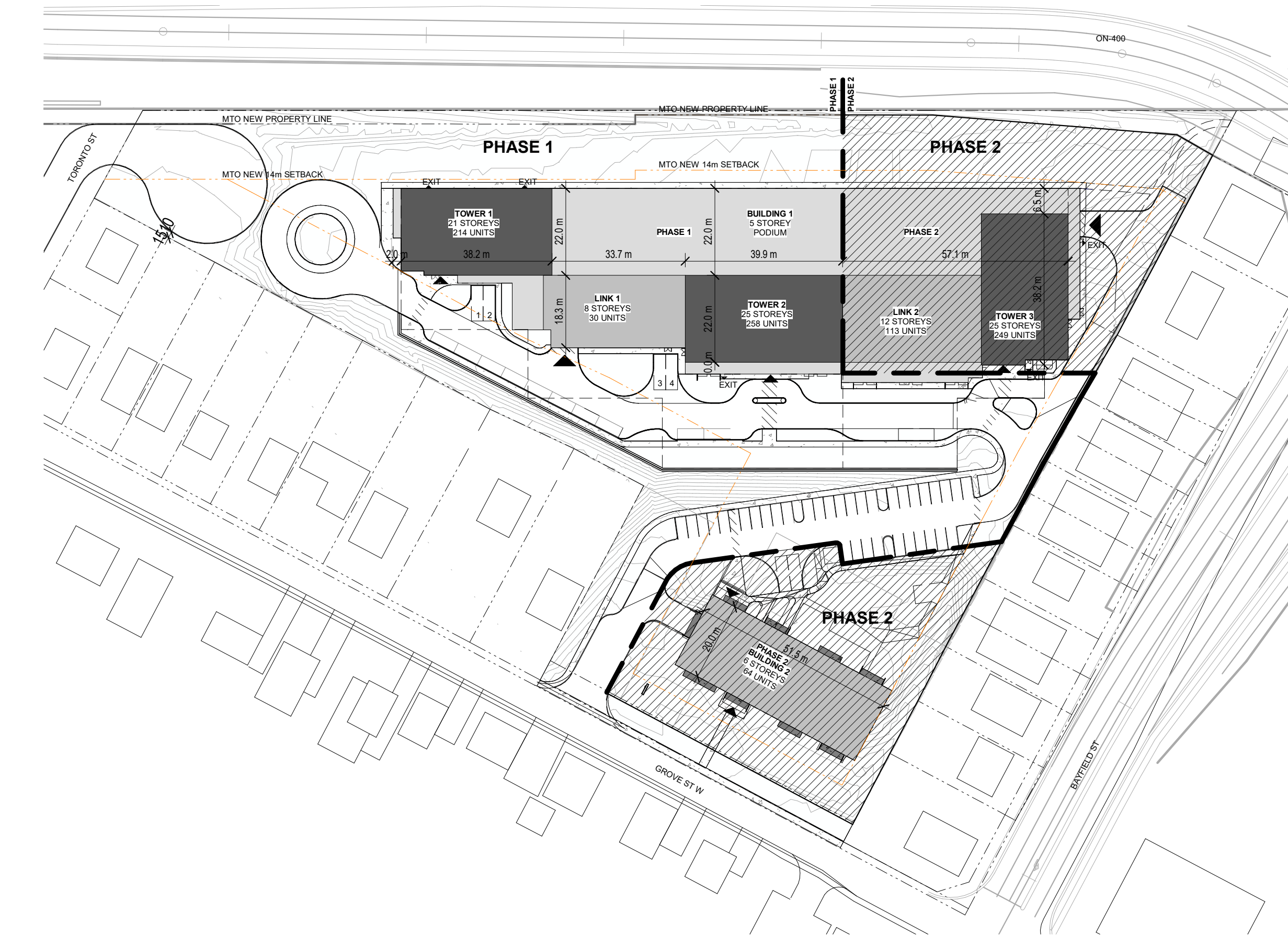


C:\Users\HShurrah\Documents\21041 - 10-24 Grove Street Barrie(Skyline) V14 - Main Building - HShurrah\ASMT.rvt

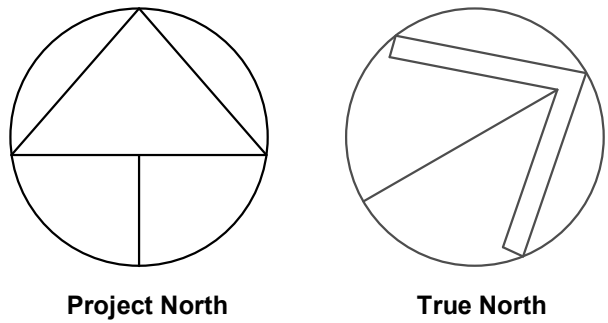


1 SITE PLAN - PHASE 1  
1:1000

SITE DATA CHART:			
	PHASE 1	PHASE 2	TOTAL
DENSITY:	502 UNITS	426 UNITS	928 UNITS
PARKING:			
INTERIOR PARKING	721	431	1,152
SURFACE PARKING	43	0	43
TOTAL PARKING:	764	429	1,193
PARKING RATIO	764/503 = 1.51	429/426 = 1.007	1,193/928 = 1.28



2 SITE PLAN - PHASE 1 & 2  
1:1000



#### GENERAL NOTES

1. DO NOT SCALE DRAWINGS. WRITTEN DIMENSIONS SHALL HAVE PRECEDENCE OVER SCALED DIMENSIONS.
2. ALL WORK SHALL COMPLY WITH THE 2012 ONTARIO BUILDING CODE AND AMENDMENTS.
3. CONTRACTORS MUST CHECK AND VERIFY ALL DIMENSIONS AND SPECIFICATIONS AND REPORT ANY DISCREPANCIES TO THE ARCHITECT BEFORE PROCEEDING WITH THE WORK.
4. ALL CONTRACTORS AND SUB-CONTRACTORS SHALL HAVE A SET OF APPROVED CONSTRUCTION DOCUMENTS ON SITE AT ALL TIMES.
5. ALL DOCUMENTS REMAIN THE PROPERTY OF THE ARCHITECT. UNAUTHORIZED USE, MODIFICATION, AND/OR REPRODUCTION OF THESE DOCUMENTS IS PROHIBITED WITHOUT WRITTEN PERMISSION. THE CONTRACT DOCUMENTS WERE PREPARED BY THE CONSULTANT FOR THE ACCOUNT OF THE OWNER.
6. THE MATERIAL CONTAINED HEREIN REFLECTS THE CONSULTANT'S BEST JUDGEMENT IN LIGHT OF THE INFORMATION AVAILABLE TO HIM AT THE TIME OF PREPARATION. ANY USE WHICH A THIRD PARTY MAKES OF THE CONTRACT DOCUMENTS, OR ANY RELIANCE ON OR DECISIONS TO BE MADE BASED ON THEM ARE THE RESPONSIBILITY OF SUCH THIRD PARTIES.
7. THE CONSULTANT ACCEPTS NO RESPONSIBILITY FOR DAMAGES, IF ANY, SUFFERED BY ANY THIRD PARTY AS A RESULT OF DECISIONS MADE OR ACTIONS BASED ON THE CONTRACT DOCUMENTS.

1	2021-09-07	ISSUED FOR 1ST SPA SUBMISSION
No.	Date	Revision

	Project No.	21041
	Project Date	2021-08-18
	Drawn by	HSH
	Checked by	MES
	Plot Date / Time	2021-09-03 11:55:50 AM

10-24 GROVE STREET,  
BARRIE

#### PHASING PLAN

	Drawing Scale	As indicated
	Status	
	Revision No.	SPA
	Drawing No.	5572

A1.2 - r1