

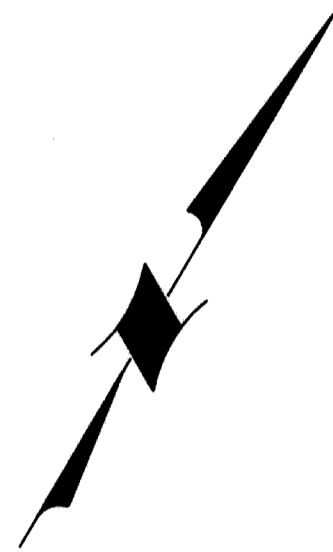
ALL COORDINATES ARE IN METRES AND WERE DERIVED FROM GPS OBSERVATIONS USING THE CAN-NET NETWORK, AND ARE REFERRED TO UTM ZONE 17, NAD 83 (CSRS, CBNv6-2010.0).

OBSERVED CONTROL POINTS (OCP'S): UTM ZONE 17, NAD 83 (CSRS, CBNv6-2010.0) COORDINATES TO URBAN ACCURACY PER SEC. 14 (2) OF O.REG. 216/10.

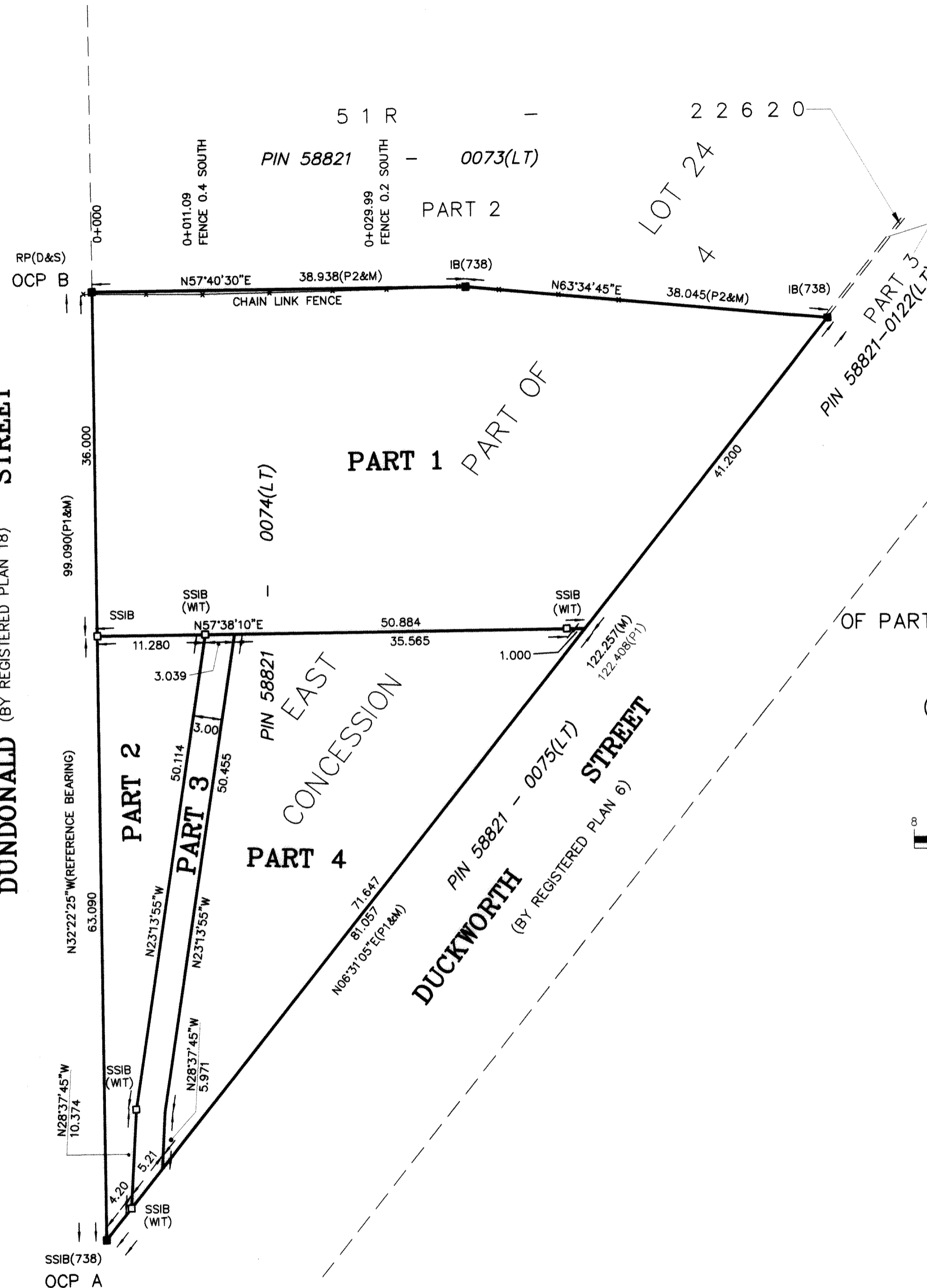
POINT ID	NORTHING	EASTING
OCP A	4916238.304	605355.796
OCP B	4916321.992	605302.738

CAUTION  
COORDINATES CANNOT, IN THEMSELVES, BE USED TO RE-ESTABLISH CORNERS OR BOUNDARIES SHOWN ON THE PLAN.

DISTANCES ON THIS PLAN ARE GROUND DISTANCES AND CAN BE CONVERTED TO GRID DISTANCES BY MULTIPLYING BY THE COMBINED SCALE FACTOR OF 0.9997028



DUNDONALD STREET  
PIN 58821 - 0001(LT)  
(BY REGISTERED PLAN 18)



I REQUIRE THIS PLAN TO BE DEPOSITED UNDER THE LAND TITLES ACT.

**PLAN 51R-39870**

RECEIVED AND DEPOSITED  
DATE MARCH 5, 2015.

DATE *April 1st 2015*  
*J. Stanton*  
J. C. STANTON  
ONTARIO LAND SURVEYOR  
CANADA LANDS SURVEYOR

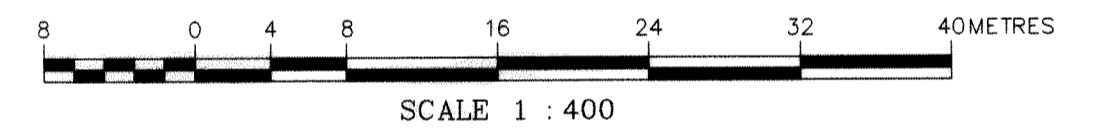
REPRESENTATIVE FOR THE  
LAND REGISTRAR FOR THE LAND  
TITLES DIVISION OF SIMCOE '51'

**METRIC**  
DISTANCES AND COORDINATES SHOWN ON THIS PLAN ARE IN METRES AND CAN BE CONVERTED TO FEET BY DIVIDING BY 0.3048.

SCHEDULE OF PARTS				
PART	LOT	CONCESSION	PIN	AREA
1				2275.07m <sup>2</sup>
2	PART OF EAST PART OF LOT 24	4	ALL OF PIN 58821-0074(LT)	396.31m <sup>2</sup>
3				175.40m <sup>2</sup>
4				1034.19m <sup>2</sup>

**PLAN OF SURVEY**  
OF PART OF THE EAST PART OF LOT 24, CONCESSION 4  
**CITY OF BARRIE**  
(FORMERLY IN THE TOWNSHIP OF VESPRA)  
**COUNTY OF SIMCOE**

SCALE 1:400



J. C. STANTON O.L.S., C.L.S.  
2015

**NOTES:**

BEARINGS ARE GRID, DERIVED FROM OBSERVED POINTS A AND B BY REAL TIME NETWORK (RTN) OBSERVATIONS, U.T.M. ZONE 17, NAD 83 (CSRS, CBNv6-2010.0). HAVING A GRID BEARING OF N32°22'25"W.  
FOR ASTONOMIC BEARING COMPARISONS, A ROTATION OF -0°56'55" WAS APPLIED TO P1, AND P2.

- (D&S) -DENOTES DEARDEN AND STANTON LIMITED, OLS
- (P1) -DENOTES PLAN OF SURVEY BY R.C. KIRKPATRICK O.L.S. DATED FEBRUARY 20, 1973.
- (P2) -DENOTES DEPOSITED PLAN 51R-22620
- (M) -DENOTES MEASURED

**LEGEND**

- SIB -DENOTES STANDARD IRON BAR
- SSIB -DENOTES SHORT STANDARD IRON BAR
- IB -DENOTES IRON BAR
- RP -DENOTES ROCK POST
- -DENOTES MONUMENT FOUND
- -DENOTES MONUMENT PLANTED
- (738) -DENOTES R.C. KIRKPATRICK, O.L.S.

**SURVEYOR'S CERTIFICATE**

I CERTIFY THAT:  
1) THIS SURVEY AND PLAN ARE CORRECT AND IN ACCORDANCE WITH THE SURVEYS ACT THE SURVEYORS ACT AND THE LAND TITLES ACT AND THE REGULATIONS MADE UNDER THEM.  
2) THE SURVEY WAS COMPLETED ON THE 13th DAY OF FEBRUARY, 2015.  
  
ORILLIA, ONTARIO  
MARCH 5, 2015.

*J. C. Stanton*  
J. C. STANTON  
ONTARIO LAND SURVEYOR  
CANADA LANDS SURVEYOR

**DEARDEN AND STANTON LTD**

ONTARIO LAND SURVEYORS  
CANADA LANDS SURVEYORS  
CONSULTING ENGINEERS  
89 COLDWATER STREET E. L3V 1W8  
PHONE (705)325-9521 FAX (705)325-0241  
www.deardenandstanton.com

**ORILLIA - ONTARIO**

CAD FILE: RF26013

C-7823