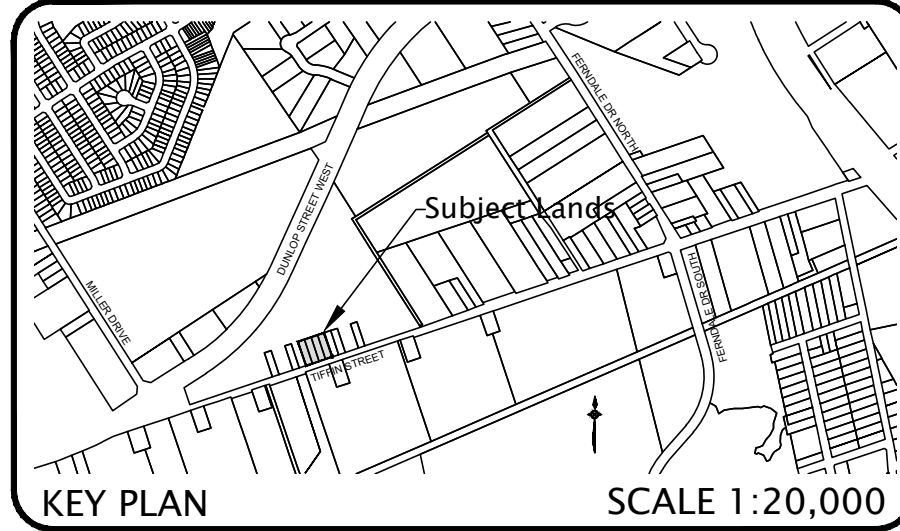


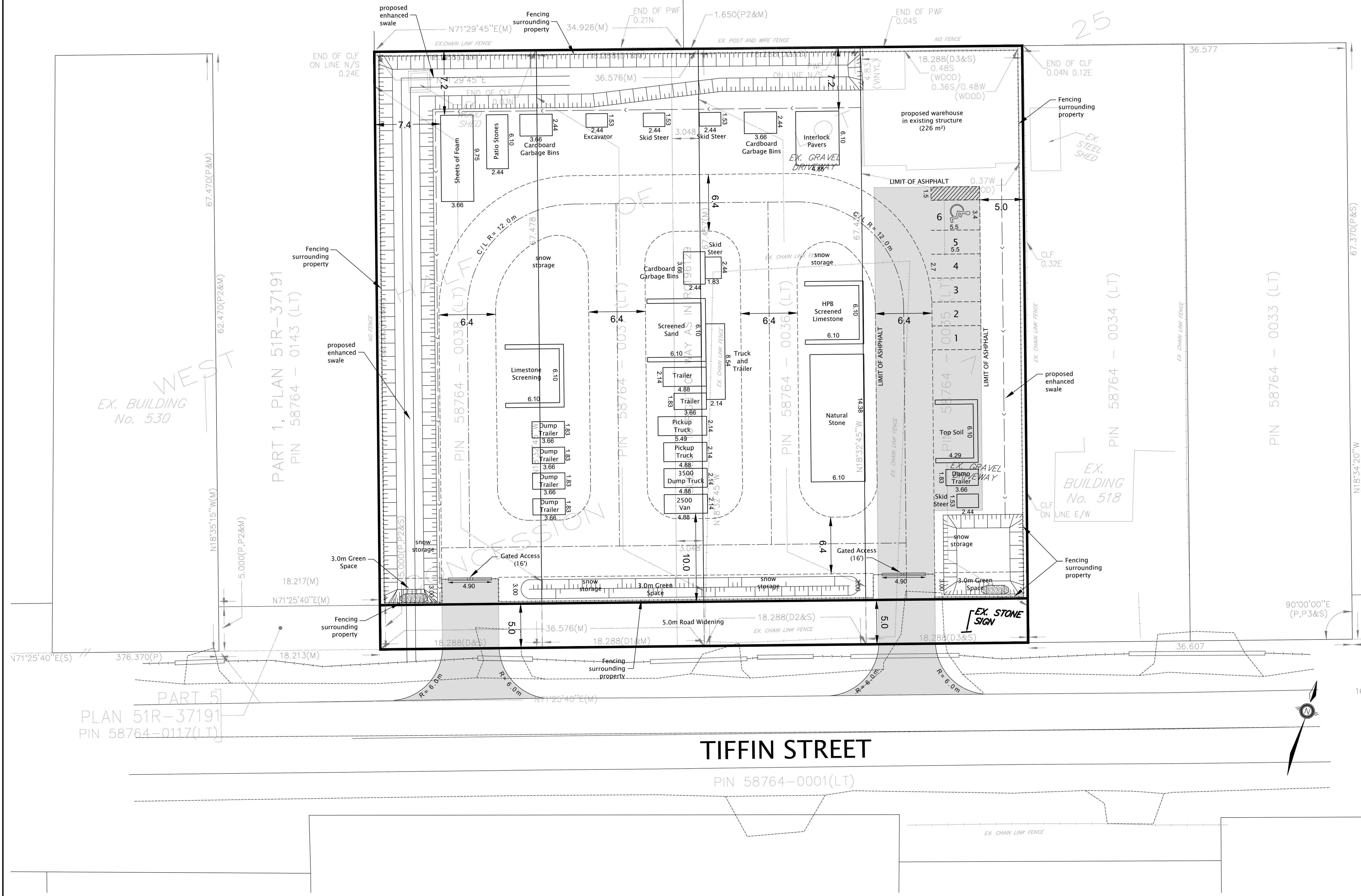
PART 1
PIN 58764-0143(LT)

PART 2
PIN 58764-0114(LT)

PLAN 51R - 37191



Concept Plan 4
Plan of Survey of
Part of West Half of Lot 25,
Concession 7
(Geographic Township of Vespra)
City of Barrie
County of Simcoe, 2022



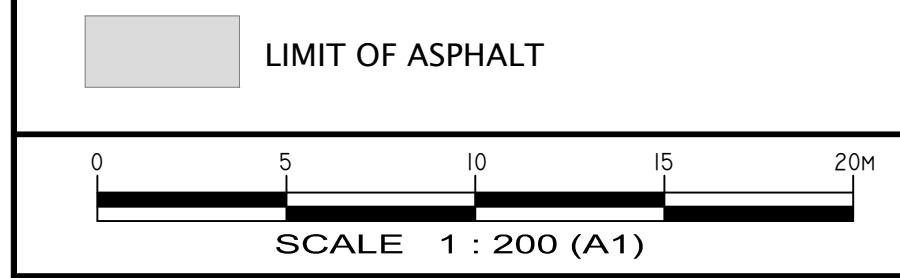
Subject Lands 4934.5 m²

Zoning Table 4.6 - parking standards:

	Required	Provided
Warehouse - 1 space per 1000 m ² gfa	1 Space	1 Space
Outdoor Storage - 1 space per 1000 m ² of lot area	5 Spaces	5 Spaces
Total	6 Spaces	6 Spaces

Barrier Free Parking 4.6.4 - Required Parking 5 to 25 spaces
= T Type A Space (3.4m width + 1.5m access aisle)

Loading Spaces 4.7
Gross Floor Area 0 m² - 999 m² = 0 loading spaces required



PIONEER FAMILY POOLS BARRIE INC.
CONCEPT PLAN

Brand L. Clever
REGISTERED PROFESSIONAL PLANNER
R.P.P.

Date Issued:	APRIL 4, 2022
Checked By:	BC
Project No.:	PIO-21060
Drawn By:	m.c.r.
Drawing Name:	PIO-21060-CP-4.dwg

JONES CONSULTING GROUP LTD.
PLANNERS & ENGINEERS
220 Waverley Drive, Unit 11, Barrie, Ontario L4R 1W5
Phone: 705-734-2538 Fax: 705-734-1056
www.jonescg.com

DATE	SCHEDULE OF REVISIONS DESCRIPTION	DRAWN

PIONEER FAMILY POOLS BARRIE INC.
CITY OF BARRIE

G:\Planning Drawings\PIO-21060\dwg\PIO-21060-CP-4.dwg Layout:CP Plotted Apr 04, 2022 @ 7:50am By marichards The Jones Consulting Group Ltd.