

REV.	ALTERATION	DATE	BY

**LUMINAIRE SPECIFICATIONS**  
 OF THE LIGHT: EALS-03-0-C2-AN-7-30-N-A-D1-BLCK  
 QUANTITY: TEXTURED BLACK  
 PAINT: TEXTURED BLACK

**POLE SPECIFICATIONS**  
 STAIRCASE NO.: 550-877-0-011  
 QUANTITY: 5/7 120

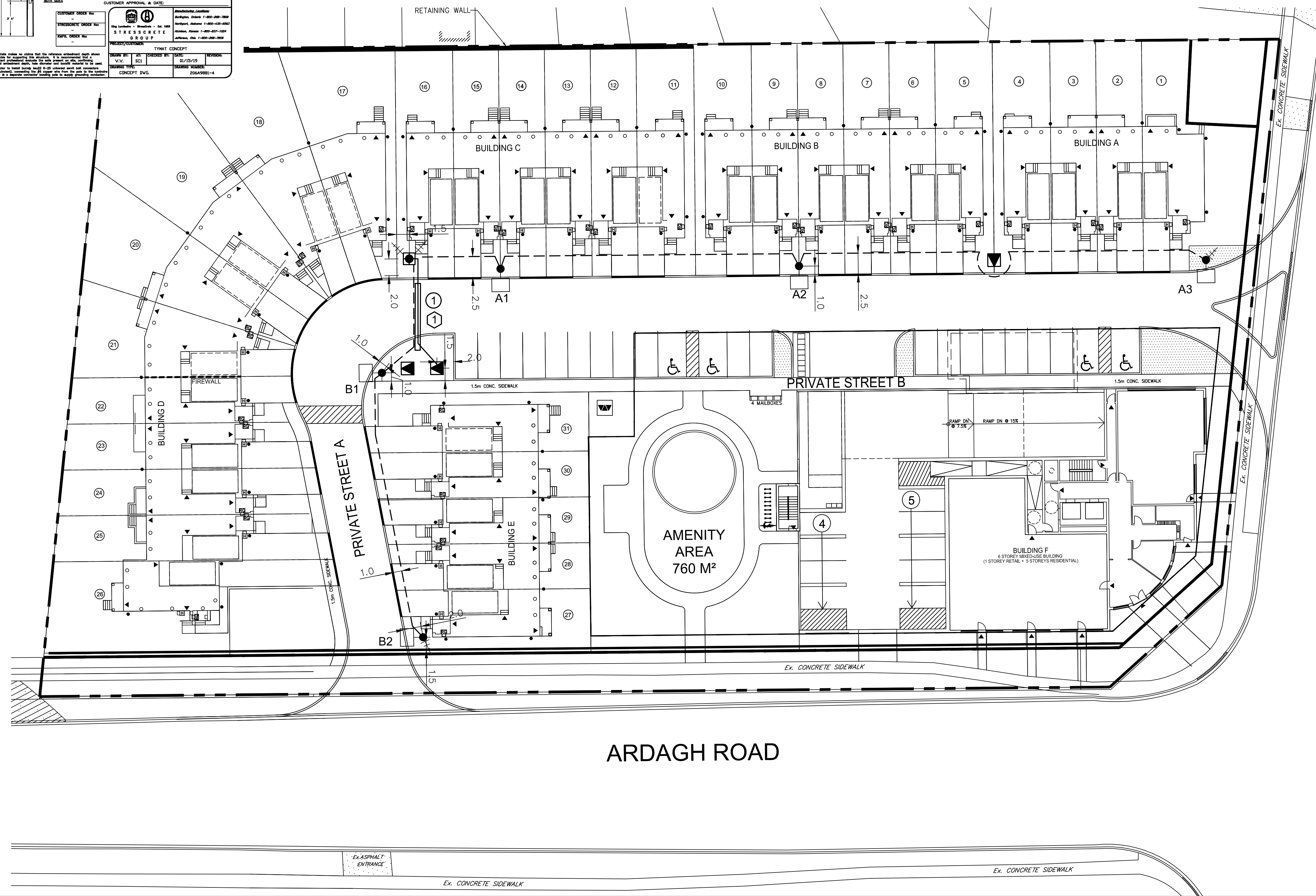
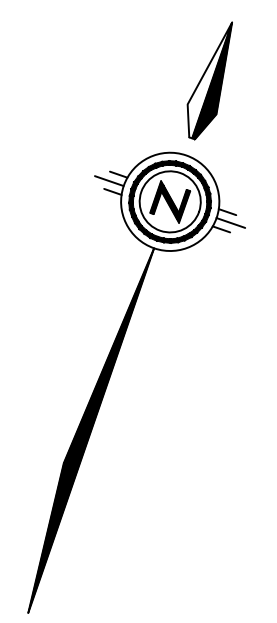
**SECTION:** SQUARE  
**COLOR:** ETCHED  
**FINISH:** ETCHED  
**POLE TOP:** 4 3/4" FL/FL  
**POLE BUTT:** 7 7/8" FL/FL  
**LENGTH:** 25' 0"  
**APPROX. WEIGHT:** 538 lbs  
**MIN. BACKWASH:** 1 1/2" DIA.

**INSTALLATION:**  
 SEE NOTES

**CUSTOMER APPROVAL & DATE:**

**STRESS-CRETE**  
 8 8 8 U P  
 PROJECT/CONTRACT NO.

**THWAT CONCEPT**  
 DRAWN BY: SC1  
 CHECKED BY: SC1  
 DATE: 01/25/19  
 PROJECT NO.: 2049881-4



KEYMAP (N.T.S.)

LEGEND

- PRIVATE STREETLIGHT ASSEMBLY:  
LUMINAIRE: 50W EALS LED BY GE TO MATCH IES FILE EALS-03-0-C2-AN-7-30-N-A-D1-BLCK, C/W PHOTOCONTROL RECEPTACLE.  
POLE BY STRESS-CRETE: 25' 0" OVERALL HEIGHT, ETCHED ECLIPSE SQUARE CONCRETE POLE  
ARM: 10" MOUNTING ARM TO SQUARE POLE INCLUDED WITH FIXTURE.  
PHOTOCONTROL: PE TO BE SUPPLIED INDEPENDENT OF FIXTURE.
- PROPOSED ELECTRA UTILITIES TRANSFORMER
- STREETLIGHT PEDESTAL SHALL BE PEDESTAL SOLUTIONS INC. 42" SL422. TO BE INSTALLED ON A PRE-CAST CONCRETE BASE BY UTILICON (UP1420)  
PEDESTAL TO BE GROUND-IN ACCORDANCE WITH E.S.A.
- STREETLIGHT CABLE: 2-#4 CU RW90 XLPEI 1000V, C/W #6 CU RW90 XLPEI GROUND (GREEN) IN D.B. 50mm PVC TYPE II DUCT.
- PEDESTAL FEED CABLE: 3-#4 CU RW90 XLPEI 1000V, C/W #6 CU RW90 XLPEI GROUND (GREEN) IN D.B. 50mm PVC TYPE II DUCT.
- 50mm PVC TYPE 2 D.B. DUCT AT ROAD CROSSINGS. QUANTITY FOR STREETLIGHTING SYSTEM AS INDICATED.
- GROUND ROD
- MUNICIPAL ADDRESS
- EXISTING STREETLIGHT

No.	Revision	Date	By	App'd
R2	REVISED PER UPDATED SITE PLAN AND CIVIL	2020.05.21	T.J.G.	
R1	REVISED PER CIVIL COMMENT	2019.06.10	T.J.G.	

CONSULTANT

ACCEPTED  
CITY OF BARRIE

T. J. GAYOWSKY  
2020.05.21  
PROVINCE OF ONTARIO

SIGNATURE \_\_\_\_\_ DATE \_\_\_\_\_

CITY OF BARRIE

RTG SYSTEMS INC.  
ELECTRICAL CONSULTING ENGINEERS  
3518 Mainway Dr., Suite 201 Office: (905) 335-4470  
Burlington ON L7M 1A8 Toronto: (905) 627-7887  
E-MAIL: general@rtgsystems.com

224 ARDAGH ROAD TOWNHOUSE DEVELOPMENT  
PRIVATE SITE LIGHTING PLAN

Surveyed by:	Checked by:	RTG File No.
Drawn by:	Approved by:	04940-00
Designed by: T.J.G.	Date: 2019.05.24	Drawing No.
Scale		SL-1
Horz. 1:250		Sheet No.
		1 OF 1