

Key Map, Not to Scale

LEGEND

Tree Inventory

Refer to the report dated 31 March 2022. No significant trees greater than 10cm exist on or within six metres of the subject property.

Tree Removals

The removal of 31 trees is required to accommodate the proposed development.

Tree Preservation

Preservation of the remaining trees will be possible with appropriate tree protection measures. Tree protection measures must be implemented prior to earth works.

- Required Tree Protection Fencing Location per BSD-1232
- Dripline of tree to be removed
- Dripline of tree to be retained
- Tree Label removal recommended
- Tree Label preservation recommended

LH = Shademaker Honey Locust (*Gleditsia triacanthos 'inermis'*)
Mr = Red Maple (*Acer rubrum*)
Bd = Basswood (*Tilia americana*)
Hk = Hackberry (*Celtis occidentalis*)
Mh = Sugar Maple (*Acer saccharum*)
Id = Ironwood (*Ostrya virginiana*)
Gk = Ginkgo (*Ginkgo biloba*)

PART OF LOT 8, CONCESSION 12
(GEOGRAPHIC TOWNSHIP OF INNISFIL)
CITY OF BARRIE, COUNTY OF SIMCOE

| No. | Issue/Revisions | Date | By |
|-----|-------------------|-------------|----|
| 1 | Report Submission | 31 Mar. '22 | KB |

Base Data: Rudy Mak Surveying Ltd. (survey)

146 Lakeshore Road West
PO Box 1267 Lakeshore W PO
Oakville ON L6K 0B3
t: 289.537.1871
e: consult@kuntzforestry.ca
web: www.kuntzforestry.ca

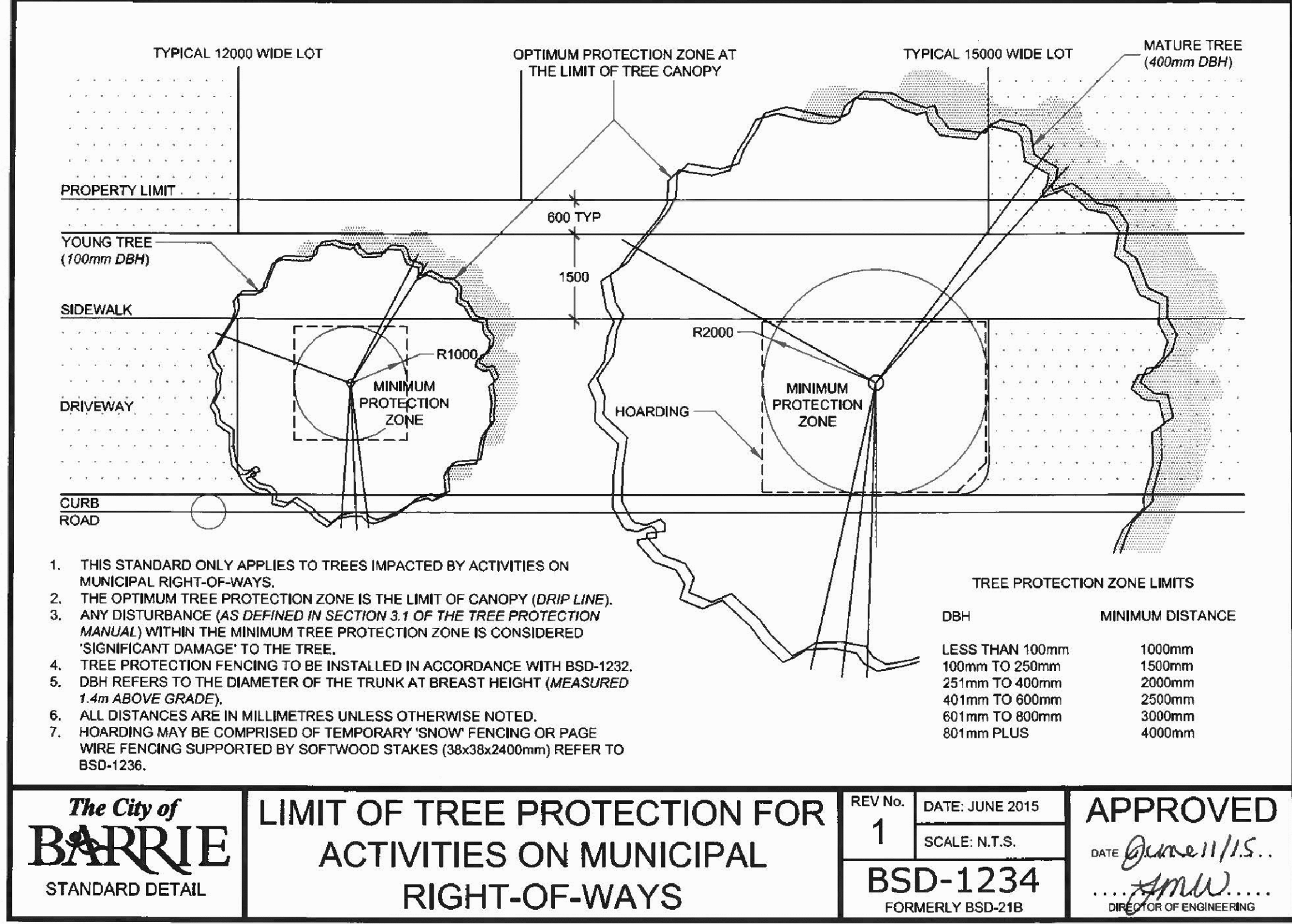
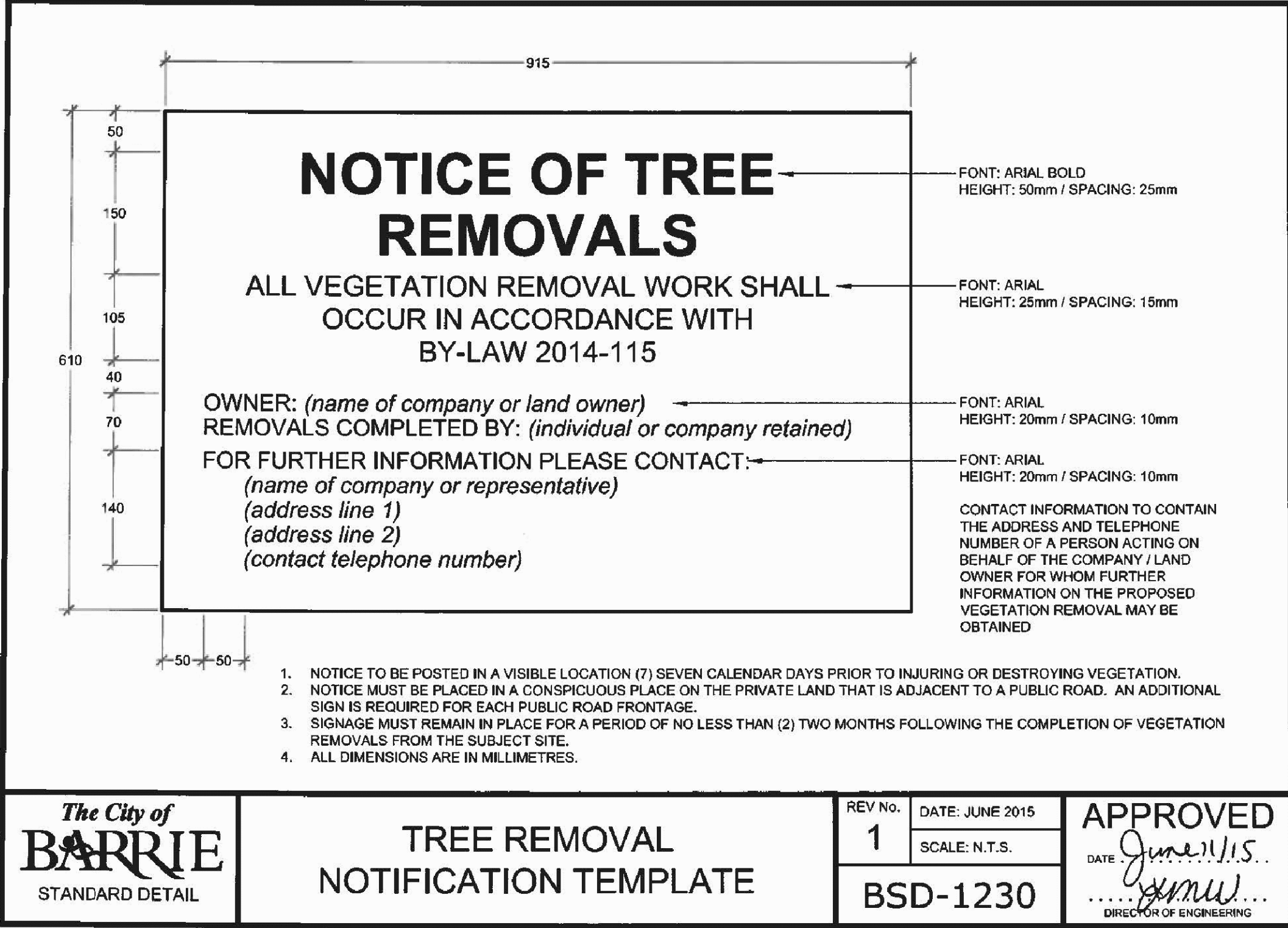
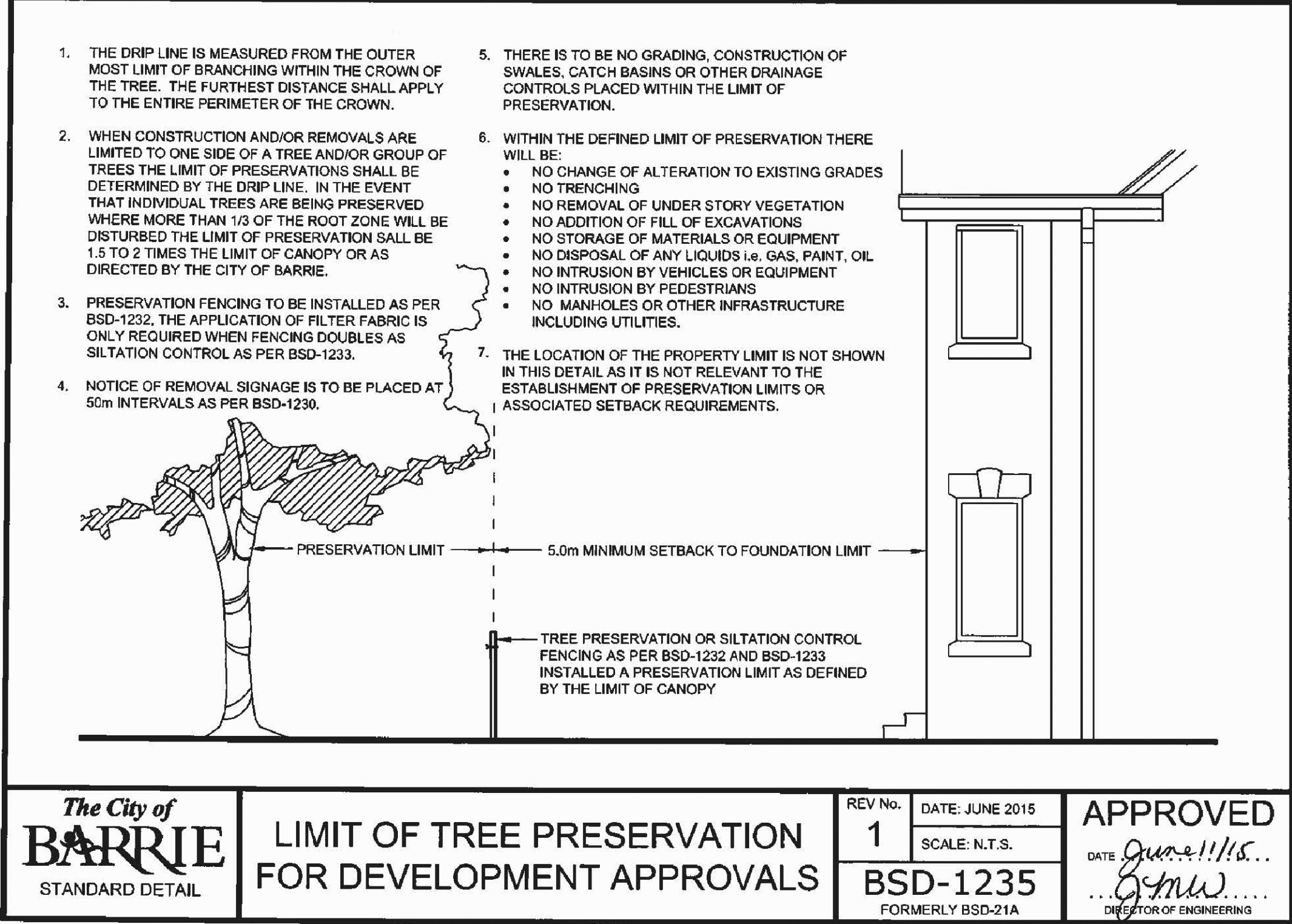
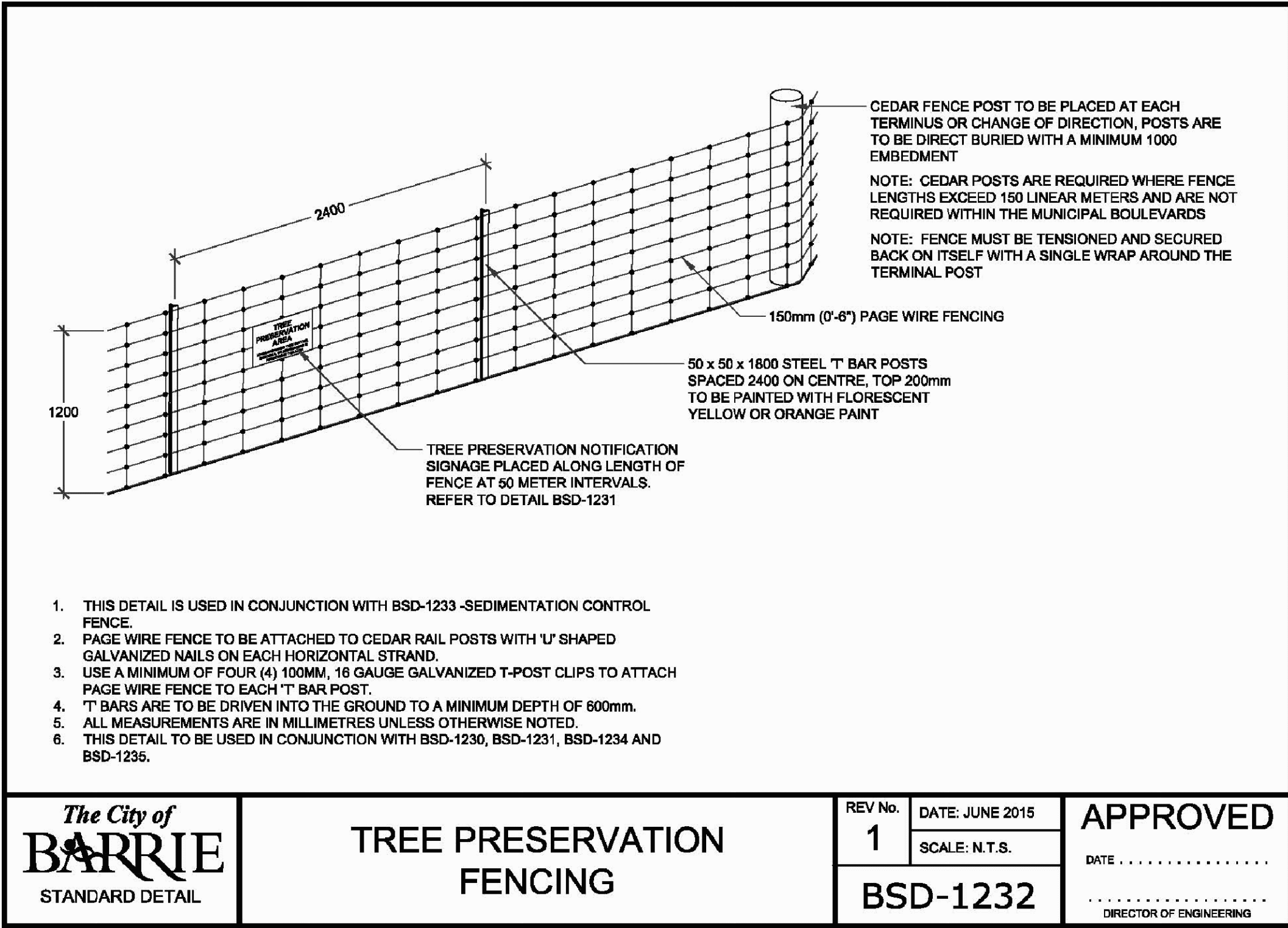
Client: STUDIO tla
20 Champlain Blvd, Suite 102
Toronto, ON M3H 2Z1

Property: 109 Park Place Blvd
Barrie, ON

Tree Inventory and Preservation Plan

| | |
|---------|---------------|
| Project | P3116 |
| Date | 31 March 2022 |
| Scale | 1:500 |

Figure
TP-1



| No. | Issue/Revisions | Date | By |
|-----|-------------------|-------------|----|
| 1 | Report Submission | 31 Mar. '22 | KB |
| | | | |
| | | | |
| | | | |

Base Data: Rudy Mak Surveying Ltd. (survey)

KUNTZ FORESTRY CONSULTING Inc.

146 Lakeshore Road West
PO Box 1267 Lakeshore W PO
Oakville ON L6K 0B3
t: 289.537.1871
e: consult@kuntzforestry.ca
web: www.kuntzforestry.ca

Client:

STUDIO tla

20 Champlain Blvd, Suite 102

Toronto, ON M3H 2Z1

Property:

109 Park Place Blvd

Barrie, ON

Standard Drawings and Specifications

| | | |
|---------|---------------|-------------|
| Project | P3116 | Figure |
| Date | 31 March 2022 | TP-2 |
| Scale | | |



LEGEND

432

30

135

279

25

65

TREE
PRESERVATION
AREA

NO UNAUTHORIZED TREE CUTTING,
REMOVALS, OR DISTURBANCE IS
PERMITTED IN THIS AREA

FONT: ARIAL BOLD
HEIGHT: 35mm / SPACING: 15mm

FONT: ARIAL
HEIGHT: 15mm / SPACING: 10mm

1. SIGNS MUST BE FABRICATED FROM WEATHER RESISTANT MATERIAL.

2. SIGNS ARE TO BE SECURELY FASTENED AND PLACED IN 50 METER INTERVALS ALONG ALL TREE PRESERVATION FENCING.

3. SIGNS MUST REMAIN POSTED FOR THE DURATION OF THE PROJECT OR UNTIL APPROVAL TO REMOVE PRESERVATION FENCING IS PROVIDED BY THE MUNICIPALITY.

4. ALL DIMENSIONS ARE IN MILLIMETRES.

5. THIS DETAIL IS TO BE USED IN CONJUNCTION WITH BSD-1230 AND BSD-1232.

The City of
BARRIE

STANDARD DETAIL

TREE PRESERVATION
AREA TEMPLATE

REV No.
1

DATE: JUNE 2015
SCALE: N.T.S.

APPROVED
DATE: June 11, 15
.....
DIRECTOR OF ENGINEERING

BSD-1231

SOFTWOOD STAKES

BOULEVARD

DRIVEWAY

SIDEWALK

ROAD

CURB

1220

1220

SNOW FENCE OR
APPROVED EQUIVALENT
1200mm HEIGHT

1. TREE HOARDING TO USE ONLY SOFTWOOD STAKES (38X38X2400) EXTENDING 300mm INTO FIRM GROUND SPACED AT ONE METER CENTRES. SECURE USING #12 GAUGE GALVANIZED WIRE OR APPROVED EQUIVALENT.

2. THIS STANDARD ONLY APPLIES TO TREES IMPACTED BY ACTIVITIES ON MUNICIPAL RIGHT-OF-WAYS.

3. THE OPTIMUM TREE PROTECTION ZONE IS THE LIMIT OF CANOPY (DRIP LINE).

4. ALL DIMENSIONS ARE IN MILLIMETRES UNLESS OTHERWISE NOTED.

5. THIS DETAIL TO BE USED IN CONJUNCTION WITH BSD-1234.

The City of
BARRIE

STANDARD DETAIL

TREE HOARDING DETAIL FOR
ACTIVITIES ON MUNICIPAL
RIGHT-OF-WAYS

REV No.
1

DATE: JUNE 2015
SCALE: N.T.S.

APPROVED
DATE: June 11, 15
.....
DIRECTOR OF ENGINEERING

BSD-1236

| No. | Issue/Revisions | Date | By |
|-----|-------------------|-------------|----|
| 1 | Report Submission | 31 Mar. '22 | KB |
| | | | |
| | | | |
| | | | |

Base Data: Rudy Mak Surveying Ltd. (survey)

KUNTZ
FORESTRY
CONSULTING Inc.

146 Lakeshore Road West
PO Box 1267 Lakeshore W PO
Oakville ON L6K 0G3
t: 289.837.1871
e: consult@kuntzforestry.ca
web: www.kuntzforestry.ca

Client:
STUDIO tla
20 Champlain Blvd, Suite 102
Toronto, ON M3H 2Z1

Property:
109 Park Place Blvd
Barrie, ON

Standard Drawings and Specifications

| | |
|---------|---------------|
| Project | P3116 |
| Date | 31 March 2022 |
| Scale | |

Figure
TP-3