

PROJECT STATISTICS

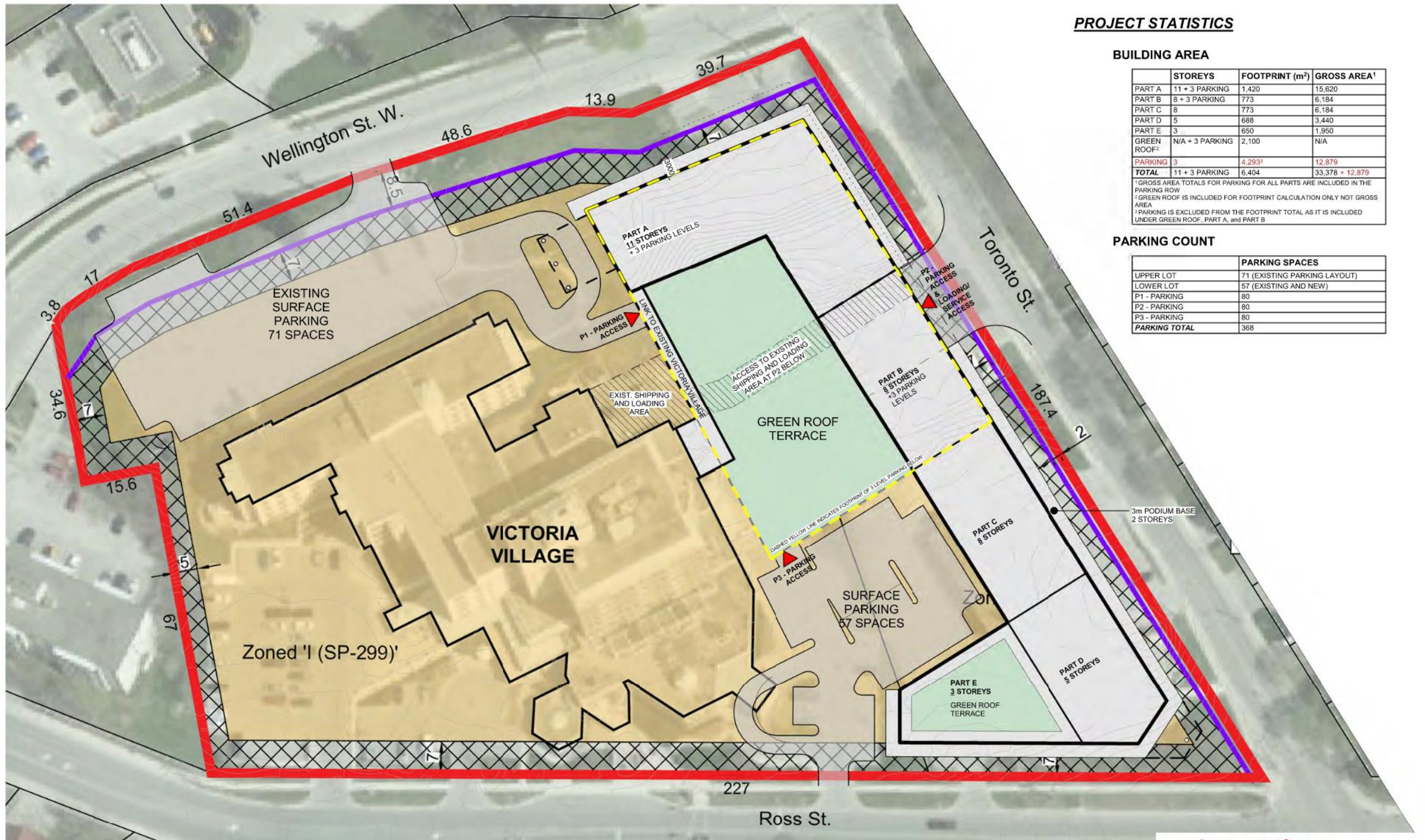
BUILDING AREA

	STOREYS	FOOTPRINT (m ²)	GROSS AREA ¹
PART A	11 + 3 PARKING	1,420	15,620
PART B	8 + 3 PARKING	773	6,184
PART C	8	773	6,184
PART D	5	688	3,440
PART E	3	650	1,950
GREEN ROOF ²	N/A + 3 PARKING	2,100	N/A
PARKING ³		4,293 ³	12,879
TOTAL	11 + 3 PARKING	6,404	33,378 + 12,879

¹ GROSS AREA TOTALS FOR PARKING FOR ALL PARTS ARE INCLUDED IN THE PARKING ROW
² GREEN ROOF IS INCLUDED FOR FOOTPRINT CALCULATION ONLY NOT GROSS AREA
³ PARKING IS EXCLUDED FROM THE FOOTPRINT TOTAL AS IT IS INCLUDED UNDER GREEN ROOF, PART A, and PART B

PARKING COUNT

	PARKING SPACES
UPPER LOT	71 (EXISTING PARKING LAYOUT)
LOWER LOT	57 (EXISTING AND NEW)
P1 - PARKING	80
P2 - PARKING	80
P3 - PARKING	80
PARKING TOTAL	368



Site Plan - Proposal

As indicated

salterpilonarchitecture

2021_10_18

salterpilon.com