



14.0 REPORT SUPPLEMENTARY INFORMATION

Licensee Information:

Licensee:	Michael B. Henry CD BA
Archaeology Licence:	P058
Contact Information:	Lakelands District Office 380 Talbot Street, P.O. Box 29 Port McNicoll, ON L0K 1R0 Phone: (705) 534-1546 Fax: (705) 534-7855 Email: mhenry@amick.ca www.amick.ca

Project Information:

AMICK Project Number:	11806-P
MTC Project Number:	P058-798-2011
Investigation Type:	Stage 1-2 Archaeological Assessment
Project Name:	3320 20 th Side Road.
Project Location:	South Half of Lot 20, Concession 12 (Geographic Township of Innisfill), City of Barrie, County of Simcoe

Approval Authority Information:

File Designation Number:	N/A
--------------------------	-----

Reporting Information:

Site Record/Update Forms:	McDonald Site (BcGv-11)
Date of Report Filing:	January 21, 2016
Type of Report:	REVISED

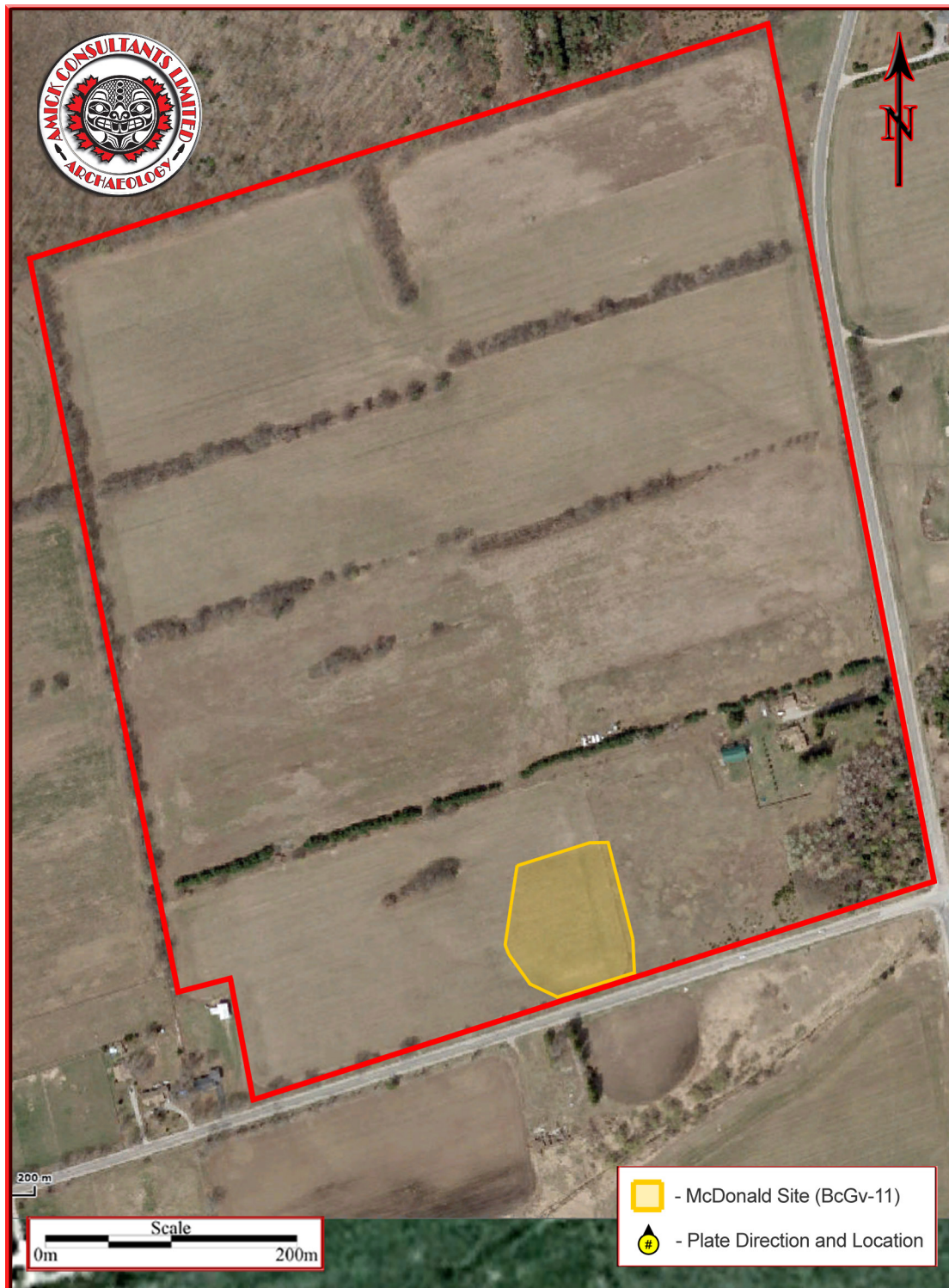


FIGURE 8 LOCATION OF McDONALD SITE (BCGV-11)



FIGURE 9 McDONALD SITE (BCGv-11) CSP LOCATION

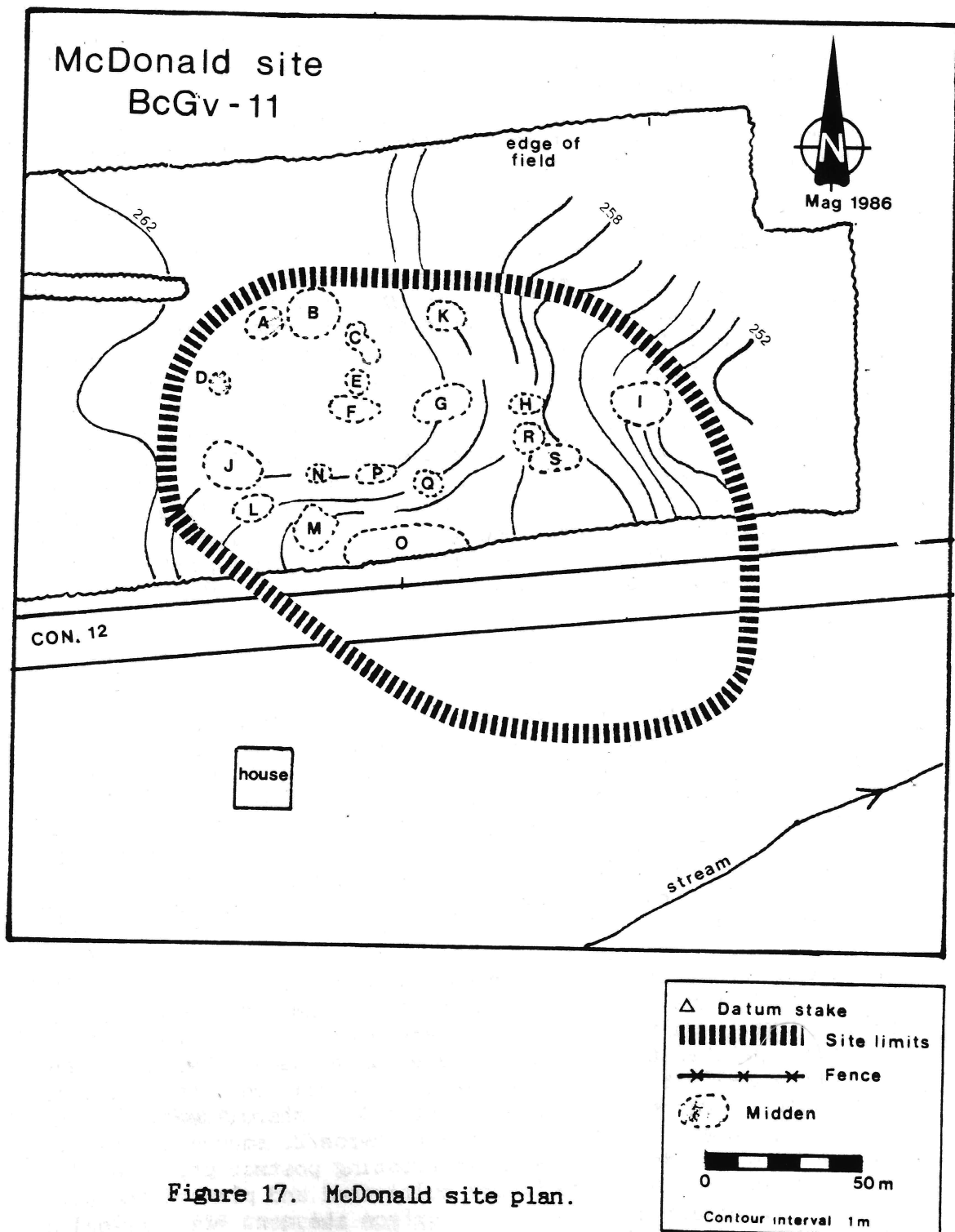


Figure 17. McDonald site plan.

Figure 10 Facsimile of the 1986 McDonald Site Plan (Warrick 1988: 40)

GPS COORDINATE DATA FOR THE McDonald SITE (BcGv-11)

GPS Receiver:

Form-factor

CPU Speed

OS

RAM/ROM

Card slots

Interface

GPS

Wireless

Ultra-rugged remote positioning GPS handheld Intel PXA270/520 MHz Windows Mobile 6.1 128MB
RAM/512MB Flash SD/SDHC Card with SDIO support RS232 9-pin serial 2-5 meter (S/A off); 2
meters (WAAS)

Archer: Bluetooth Class II; optional WiFi and wireless modems via cards Longbow/ikeGPS adds: 3 or
5 megapixel camera, DGPS, eCompass, laser rangefinder

Centre Point

44°21'25.46"N 79°35'33.55"W

17T PK 612154mE 4912496mN

South Point

44°21'23.63"N 79°35'34.41"W

17T PK 612136mE 4912439mN

North Point

44°21'27.20"N 79°35'32.73"W

17T PK 612171mE 4912550mN

West Point

44°21'24.67"N 79°35'36.03"W

17T PK 612099mE 4912471mN

East Point

44°21'25.02"N 79°35'31.39"W

17T PK 612202mE 4912483mN

Permanent Datum

44°21'23.29"N 79°35'31.49"W

17T PK 612200mE 4912430mN

This is a telephone pole on the opposite side of Maplevue Drive it is roughly 50 metres due south of
the east site limit.