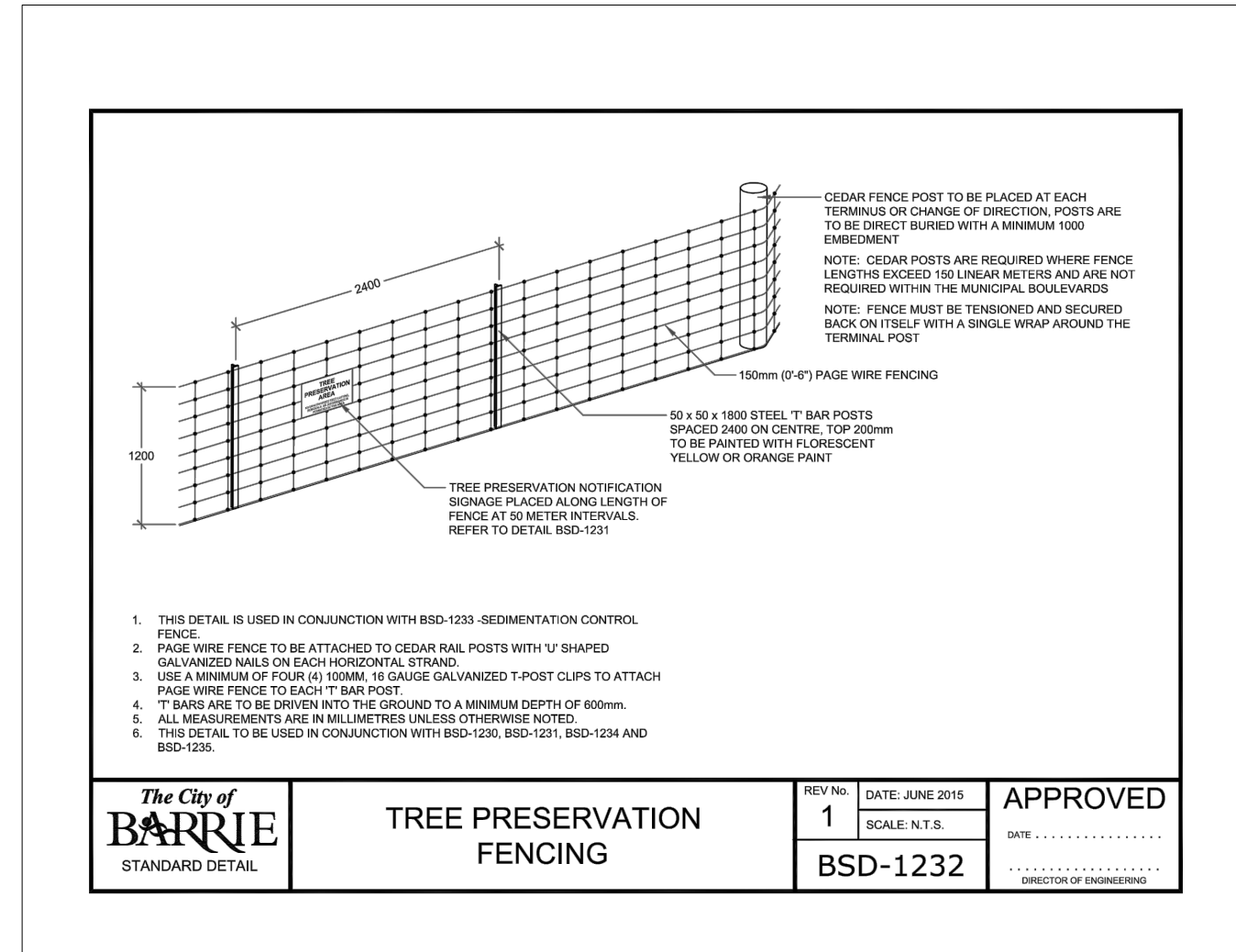
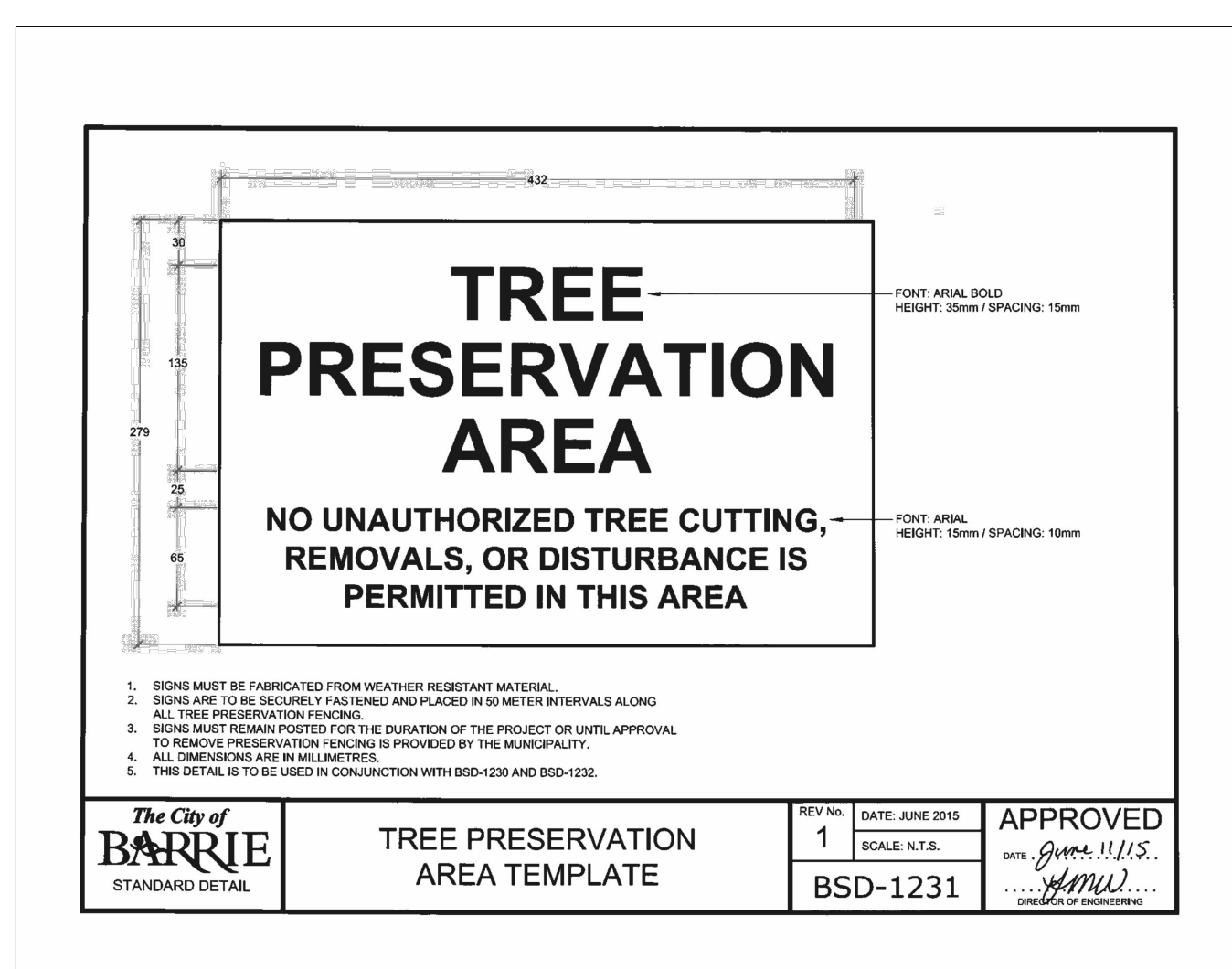


1
TI-1
TREE INVENTORY, REMOVALS, AND PROTECTION PLAN
SCALE: 1:400



2
TI-1
TREE PROTECTION FENCING DETAIL
NTS

- LEGEND**
- CONIFEROUS TREE - TO BE RETAINED
 - DECIDUOUS TREE - TO BE RETAINED
 - CONIFEROUS TREE - TO BE REMOVED
 - DECIDUOUS TREE - TO BE REMOVED
 - TREE IDENTIFICATION KEY
TREE to be RETAINED
 - TREE IDENTIFICATION KEY
TREE to be REMOVED
 - TREE PROTECTION FENCING

- GENERAL NOTES**
- Do not scale the drawings. All dimensions are in millimetres unless noted otherwise.
 - This drawing is to be read in conjunction with the project site plan, landscape plan, and engineering plan.
 - The tree inventory includes assessment of trees >10cm DBH. The trees have been assessed based on species, size and condition.
 - The contractor shall check and verify all existing and proposed grading and conditions on the project and immediately report any discrepancies to the consultant before proceeding with any removals.
 - The contractor is to be aware of all existing and proposed services and utilities. The contractor is responsible for having all underground services and utility lines staked by each agency having jurisdiction prior to commencing work.
 - This drawing is to be used for development approval only.
 - Do not leave any holes open overnight.
 - Keep area outside construction zone clean and useable by others at all times. Contractor shall thoroughly clean areas surrounding the construction zone at the end of each work day.
 - Contractor to make good any and all damages outside of the development area that may occur as a result of tree removals at no extra cost.
 - This drawing is Copyright MHBC Planning, 2020.

| | | | |
|----|-------------------|---------------------------|----|
| 2. | FEBRUARY 7, 2020 | ISSUED FOR SPA | CC |
| 1. | NOVEMBER 15, 2016 | ISSUED FOR ZBA SUBMISSION | LK |

REVISION NO. DATE ISSUED / REVISION BY

MHBC PLANNING URBAN DESIGN & LANDSCAPE ARCHITECTURE
230-7030 WESTON ROAD WOODBRIDGE, ON, L4L 6G7 | P: 905.761.5589 F: 905.761.5589 | WWW.MHBCPLAN.COM

STAMP

ISSUED FOR SPA ONLY
NOT FOR CONSTRUCTION

81 drawings and specifications are instruments of service and all remain the property of MHBC Planning and must be returned at the completion of the work. This drawing shall not be used for construction purposes unless the drawings are marked "Issued for Construction" and the professional seal is signed and dated by the landscape architect.

| | |
|------------|------------------------------------------------|
| DATE | JAN 2020 |
| DRAWN BY | CC |
| PLAN SCALE | 1:400 |
| FILE NO. | 1433AE |
| CHECKED BY | NM |
| OTHER | |
| PROJECT | 37 JOHNSON STREET Barrie, ON |
| FILE NAME | TREE INVENTORY, PROTECTION, AND REMOVALS |
| DWG NO. | TI-1 |

| Tree No. | Common Name | Botanical Name | DBH (CM) | Cond. | TPZ Size (M) | Comments | Recommendation |
|----------|------------------|---------------------------------|----------|-------|--------------|----------------------------------------|----------------------------|
| 1 | Honey Locust | Gleditsia triacanthos | 44 | F | | | Remove due to construction |
| 2 | Ash sp. | Fraxinus sp. | 51 | P | | Signs of Emerald Ash Borer | Remove due to construction |
| 3 | Ash sp. | Fraxinus sp. | 64 | P | 3 | Signs of Emerald Ash Borer | Retain |
| 4 | Spruce sp. | Picea sp. | 34 | F | 2 | | Retain |
| 5 | Austrian Pine | Pinus nigra | 48 | F | | | Remove due to construction |
| 6 | Ash sp. | Fraxinus sp. | 49 | P | 2.5 | Signs of Emerald Ash Borer | Retain |
| 7 | Spruce sp. | Picea sp. | 36 | F | | | Remove due to construction |
| 8 | Ash sp. | Fraxinus sp. | 50 | P | 2.5 | Signs of Emerald Ash Borer | Retain |
| 9 | Austrian Pine | Pinus nigra | 46 | F | | | Remove due to construction |
| 10 | Austrian Pine | Pinus nigra | 45 | F | 2.5 | | Retain |
| 11 | Austrian Pine | Pinus nigra | 49 | F/P | 2.5 | | Retain |
| 12 | Honey Locust | Gleditsia triacanthos | 47 | F | 2.5 | | Retain |
| 13 | Crabapple sp. | Malus sp. | 34 | F | | | Remove due to construction |
| 14 | Crabapple sp. | Malus sp. | 29 | F | | | Remove due to construction |
| 15 | Crabapple sp. | Malus sp. | 27 | F | | | Remove due to construction |
| 16 | Crabapple sp. | Malus sp. | 29 | F | | | Remove due to construction |
| 17 | Crabapple sp. | Malus sp. | 23 | F/P | | | Remove due to construction |
| 18 | Crabapple sp. | Malus sp. | 28 | D | | Snag; Dead | Remove due to health |
| 19 | Honey Locust | Gleditsia triacanthos | 50 | F | | | Remove due to construction |
| 20 | Honey Locust | Gleditsia triacanthos | 46 | F | 2.5 | | Retain |
| 21 | Linden sp. | Tillia sp. | 35 | F | 2 | | Retain |
| 22 | Linden sp. | Tillia sp. | 50 | F | 2.5 | | Retain |
| 23 | Ash sp. | Fraxinus sp. | 23 | F/P | | 4 stem; Signs of Emerald Ash Borer | Remove due to construction |
| 24 | Ash sp. | Fraxinus sp. | 43 | F/P | 2.5 | Signs of Emerald Ash Borer | Retain |
| 25 | Ash sp. | Fraxinus sp. | 55 | P | | Signs of Emerald Ash Borer | Remove due to construction |
| 26 | Honey Locust | Gleditsia triacanthos | 35 | F | | | Remove due to construction |
| 27 | Honey Locust | Gleditsia triacanthos | 36 | F | | | Remove due to construction |
| 28 | Honey Locust | Gleditsia triacanthos | 39 | F | 2 | | Retain |
| 29 | Ivory Silk Lilac | Syringa reticulata 'Ivory Silk' | 8 | F | 1 | | Retain |
| 30 | Ivory Silk Lilac | Syringa reticulata 'Ivory Silk' | 9 | F | 1 | | Retain |
| 31 | Ivory Silk Lilac | Syringa reticulata 'Ivory Silk' | 9 | F | 1 | Signs of Emerald Ash Borer | Retain |
| 32 | Ivory Silk Lilac | Syringa reticulata 'Ivory Silk' | 8 | F | 1 | | Retain |
| 33 | Ivory Silk Lilac | Syringa reticulata 'Ivory Silk' | 9 | F | 1 | Signs of Emerald Ash Borer | Retain |
| 34 | Ivory Silk Lilac | Syringa reticulata 'Ivory Silk' | 9 | F | 1 | | Retain |
| 35 | Ivory Silk Lilac | Syringa reticulata 'Ivory Silk' | 9 | F | 1 | | Retain |
| 36 | Ivory Silk Lilac | Syringa reticulata 'Ivory Silk' | 8 | F | 1 | | Retain |
| 37 | Crabapple sp. | Malus sp. | 28 | F | 2 | | Retain |
| 38 | Spruce sp. | Picea sp. | 38 | F | 2 | | Retain |
| 39 | Hawthorn sp. | Crataegus sp. | 25 | F | | | Remove due to construction |
| 40 | Spruce sp. | Picea sp. | 38 | F | | | Remove due to construction |
| 41 | Spruce sp. | Picea sp. | 33 | F | | | Remove due to construction |
| 42 | Maple sp. | Acer sp. | 25 | F/P | | | Remove due to construction |
| 43 | Norway Maple | Acer platanoides | 23 | F | | | Remove due to construction |
| 44 | Austrian Pine | Pinus nigra | 49 | F | | | Remove due to construction |
| 45 | Ash sp. | Fraxinus sp. | 23-28 | P | | 2 stem; Signs of Emerald Ash Borer | Remove due to construction |
| 46 | Hawthorn sp. | Crataegus sp. | 26 | F | | | Remove due to construction |
| 47 | Ash sp. | Fraxinus sp. | 39 | P | | Signs of Emerald Ash Borer | Remove due to construction |
| 48 | Ash sp. | Fraxinus sp. | 16 | P | | Signs of Emerald Ash Borer | Remove due to construction |
| 49 | Ash sp. | Fraxinus sp. | 28 | P | | Signs of Emerald Ash Borer | Remove due to construction |
| 50 | Ash sp. | Fraxinus sp. | 28 | P | | Signs of Emerald Ash Borer | Remove due to construction |
| 51 | Ash sp. | Fraxinus sp. | 25 | P | | Signs of Emerald Ash Borer | Remove due to construction |
| 52 | Ash sp. | Fraxinus sp. | 48 | P | | Signs of Emerald Ash Borer | Remove due to construction |
| 53 | Ash sp. | Fraxinus sp. | 36 | P | | Signs of Emerald Ash Borer | Remove due to construction |
| 54 | Ash sp. | Fraxinus sp. | 19 | P | | Signs of Emerald Ash Borer | Remove due to construction |
| 55 | Ash sp. | Fraxinus sp. | 33 | P | | Signs of Emerald Ash Borer | Remove due to construction |
| 56 | Ash sp. | Fraxinus sp. | 35 | P | | 2 stem; Signs of Emerald Ash Borer | Remove due to construction |
| 57 | Ash sp. | Fraxinus sp. | 27 | P | | 2 stem; Signs of Emerald Ash Borer | Remove due to construction |
| 58 | Hawthorn sp. | Crataegus sp. | 18 | F | | Signs of Emerald Ash Borer | Remove due to construction |
| 59 | Elm sp. | Ulmus sp. | 36 | F/P | | Significant deadwood; Grown into fence | Remove due to construction |
| 60 | Elm sp. | Ulmus sp. | 28 | F/P | | Significant deadwood | Remove due to construction |
| 61 | Austrian Pine | Pinus nigra | 42 | F | | | Remove due to construction |
| 62 | Austrian Pine | Pinus nigra | 36 | F | | | Remove due to construction |
| 63 | Norway Maple | Acer platanoides | 37 | F | 2 | | Retain |
| 64 | Ash sp. | Fraxinus sp. | 19 | F | | Grown into chainlink fence | Remove due to construction |
| 65 | Manitoba Maple | Acer negundo | 64 | F/P | | Signs of rot; Fruiting bodies | Remove due to construction |
| 66 | Austrian Pine | Pinus nigra | 38 | F/P | | | Remove due to construction |
| 67 | Norway Maple | Acer platanoides | 34 | F | 2 | | Retain |
| 68 | Austrian Pine | Pinus nigra | 48 | F/P | | | Remove due to construction |
| 69 | Honey Locust | Gleditsia triacanthos | 53 | F | | | Remove due to construction |
| 70 | Austrian Pine | Pinus nigra | 46 | F | | | Remove due to construction |
| 71 | Austrian Pine | Pinus nigra | 46 | F | | | Remove due to construction |
| 72 | Manitoba Maple | Acer negundo | 33 | F | 2 | Grown into fence | Retain |
| 73 | Maple sp. | Acer sp. | 13-23 | F | | 5 stem | Remove due to construction |
| 74 | Fir sp. | Abies sp. | 37 | F/P | 2 | | Retain |
| 75 | Black Walnut | Juglans nigra | 26 | F | 2 | | Retain |
| 76 | Fir sp. | Abies sp. | 46 | F | 2.5 | | Retain |
| 77 | Birch sp. | Malus sp. | 23 | F | 1.5 | | Retain |
| 78 | Maple sp. | Acer sp. | 18 | F | | | Remove due to construction |
| 79 | Spruce sp. | Picea sp. | 71 | F | 3 | | Retain |
| 80 | Spruce sp. | Picea sp. | 35 | F | 2 | | Retain |
| 81 | Maple sp. | Acer sp. | 21 | F | | | Remove due to construction |
| 82 | Spruce sp. | Picea sp. | 25 | F | 1.5 | | Retain |
| 83 | Spruce sp. | Picea sp. | 38 | F | 2 | Grown into fence | Retain |
| 84 | Manitoba Maple | Acer negundo | 67 | F | 3 | | Retain |
| 85 | Maple sp. | Acer sp. | 77 | F | 3 | Moderate deadwood in canopy | Retain |
| 86 | Basswood | Tillia americana | 55 | F | | | Remove due to construction |
| 87 | Austrian Pine | Pinus nigra | 39 | F | 2 | | Retain |
| 88 | Austrian Pine | Pinus nigra | 38 | F | 2 | | Retain |
| 89 | Basswood | Tillia americana | 65 | F | | | Remove due to construction |
| 90 | Honey Locust | Gleditsia triacanthos | 33 | F | | | Remove due to construction |
| 91 | Basswood | Tillia americana | 57 | F | | | Remove due to construction |
| 92 | Spruce sp. | Picea sp. | 28 | F | 2 | | Retain |
| 93 | Ash sp. | Fraxinus sp. | 54 | P | | Signs of Emerald Ash Borer | Remove due to construction |
| 94 | Oak Sp. | Quercus Sp. | 27/41 | F | 2.5 | | Retain |
| 95 | Oak Sp. | Quercus Sp. | 71 | F/G | 3 | | Retain |
| 96 | Beech Sp. | Fagus Sp. | 9 | F | 1 | | Retain |
| 97 | Oak Sp. | Quercus Sp. | 34 | F | 2.5 | | Retain |
| 98 | Beech Sp. | Fagus Sp. | 22 | F/G | 1.5 | | Retain |
| 99 | Sugar Maple | Acer | 24 | F | 1.5 | | Retain |
| 100 | Sugar Maple | Acer saccharum | 71 | F | 3 | | Retain |
| 101 | Sugar Maple | Acer saccharum | 66 | F | 3 | | Retain |
| 102 | Ash sp. | Fraxinus sp. | 24 | D | 1.5 | Affects of Emerald Ash Borer | Retain |
| 103 | Ash sp. | Fraxinus sp. | 16 | D | 1.5 | Affects of Emerald Ash Borer | Retain |
| 104 | Ash sp. | Fraxinus sp. | 36 | D | 2 | Affects of Emerald Ash Borer | Retain |

GROUP A
Line of saplings at fence line;
Stems up to +/- 10cm
Norway Maples (*Acer platanoides*) including the occasional Elm (*Ulmus*), Ash (*Fraxinus*) and Cherry (*Prunus*) species.

GROUP B
Line of Norway Maples (*Acer platanoides*) and Linden species (*Tilia*)
Stems up to +/- 10cm; Remnant of old fence line.

GROUP C
1x Common Buckhorn clump (*Rhamnus cathartica*) stems +/- 5 - 10 cm,
4x Manitoba Maple (*Acer negundo*) line. Grown into fence. Stems up to +/- 15cm.

GENERAL NOTES

- Do not scale the drawings. All dimensions are in millimetres unless noted otherwise.
- This drawing is to be read in conjunction with the project site plan, landscape plan, and engineering plan.
- The tree inventory includes assessment of trees >10cm DBH. The trees have been assessed based on species, size and condition.
- The contractor shall check and verify all existing and proposed grading and conditions on the project and immediately report any discrepancies to the consultant before proceeding with any removals.
- The contractor is to be aware of all existing and proposed services and utilities. The contractor is responsible for having all underground services and utility lines staked by each agency having jurisdiction prior to commencing work.
- This drawing is to be used for development approval only.
- Do not leave any holes open overnight.
- Keep area outside construction zone clean and useable by others at all times. Contractor shall thoroughly clean areas surrounding the construction zone at the end of each work day.
- Contractor to make good any and all damages outside of the development area that may occur as a result of tree removals at no extra cost.
- This drawing is Copyright MHBC Planning, 2020.

| | | | |
|----|-------------------|---------------------------|----|
| 2. | FEBRUARY 07, 2020 | ISSUED FOR SPA | CC |
| 1. | NOVEMBER 15, 2016 | ISSUED FOR ZBA SUBMISSION | LK |

| REVISION NO. | DATE | ISSUED / REVISION | BY |
|--------------|------|-------------------|----|
|--------------|------|-------------------|----|



**PLANNING
URBAN DESIGN
& LANDSCAPE
ARCHITECTURE**

230-7050 WESTON ROAD WOODBRIDGE, ON, L4L 6G7 | P: 905.761.5588 F: 905.761.5589 | WWW.MHBCPLAN.COM

| | | | | | | | | | | | | | |
|-----------------------------------------------------------------------------------------------------------------------------------------------------------------------------------------------------------------------------------------------------------------------------------------------------------------------------------------------------------------------------------------------------------------------------------------------------------------------------------------------------------------------------------------------------------------------------------------------------------------------------------------------|---------------------------------------------------------------------------------------------------------------------------------------------------------------------------------------------------------------------------------------------------------------------------------------------------------------------------------------------------------------------------------------------------------|-------------|----------|-----------------|----|-------------------|-------|-----------------|--------|-------------------|----|--------------|--|
| <p>STAMP</p>  <p>ISSUED FOR SPA ONLY NOT FOR CONSTRUCTION</p> <p><small>All drawings and specifications are instruments of service and will remain the property of MHBC Planning and must be returned at the completion of the work. This drawing shall not be used for construction purposes unless the drawings are marked "Issued for Construction" and the professional seal is signed and dated by the landscape architect.</small></p> <p>PROJECT</p> <p style="text-align: center;">37 JOHNSON STREET Barrie, ON</p> | <table border="1" style="width: 100%; border-collapse: collapse;"> <tr> <td style="width: 50%;">DATE</td> <td>JAN 2020</td> </tr> <tr> <td>DRAWN BY</td> <td>CC</td> </tr> <tr> <td>PLAN SCALE</td> <td>1:400</td> </tr> <tr> <td>FILE NO.</td> <td>1433AE</td> </tr> <tr> <td>CHECKED BY</td> <td>NM</td> </tr> <tr> <td>OTHER</td> <td></td> </tr> </table> | DATE | JAN 2020 | DRAWN BY | CC | PLAN SCALE | 1:400 | FILE NO. | 1433AE | CHECKED BY | NM | OTHER | |
| DATE | JAN 2020 | | | | | | | | | | | | |
| DRAWN BY | CC | | | | | | | | | | | | |
| PLAN SCALE | 1:400 | | | | | | | | | | | | |
| FILE NO. | 1433AE | | | | | | | | | | | | |
| CHECKED BY | NM | | | | | | | | | | | | |
| OTHER | | | | | | | | | | | | | |
| FILE NAME | DWG NO. | | | | | | | | | | | | |
| TREE INVENTORY NOTES | TI-2 | | | | | | | | | | | | |