



**SITE PLAN**

CITY OF BARRIE  
COUNTY OF SIMCOE

SITE STATISTICS  
EXISTING ZONE: RM2, SP.548

	REQUIRED	PROPOSED
Lot Area	720 sq. m	2,368 ha
Units (Apartment)	N/A	129
Units (Micro-Suites)	N/A	88
Units (Total)	N/A	217

	REQUIRED	PROPOSED
RM2		
Lot Frontage	21 m	162.02 m
Front Yard Setback (min)	7 m	7.00 m
Lot Coverage (max)	35%	17.00%
Landscape Open Space (min)	35%	47.00%

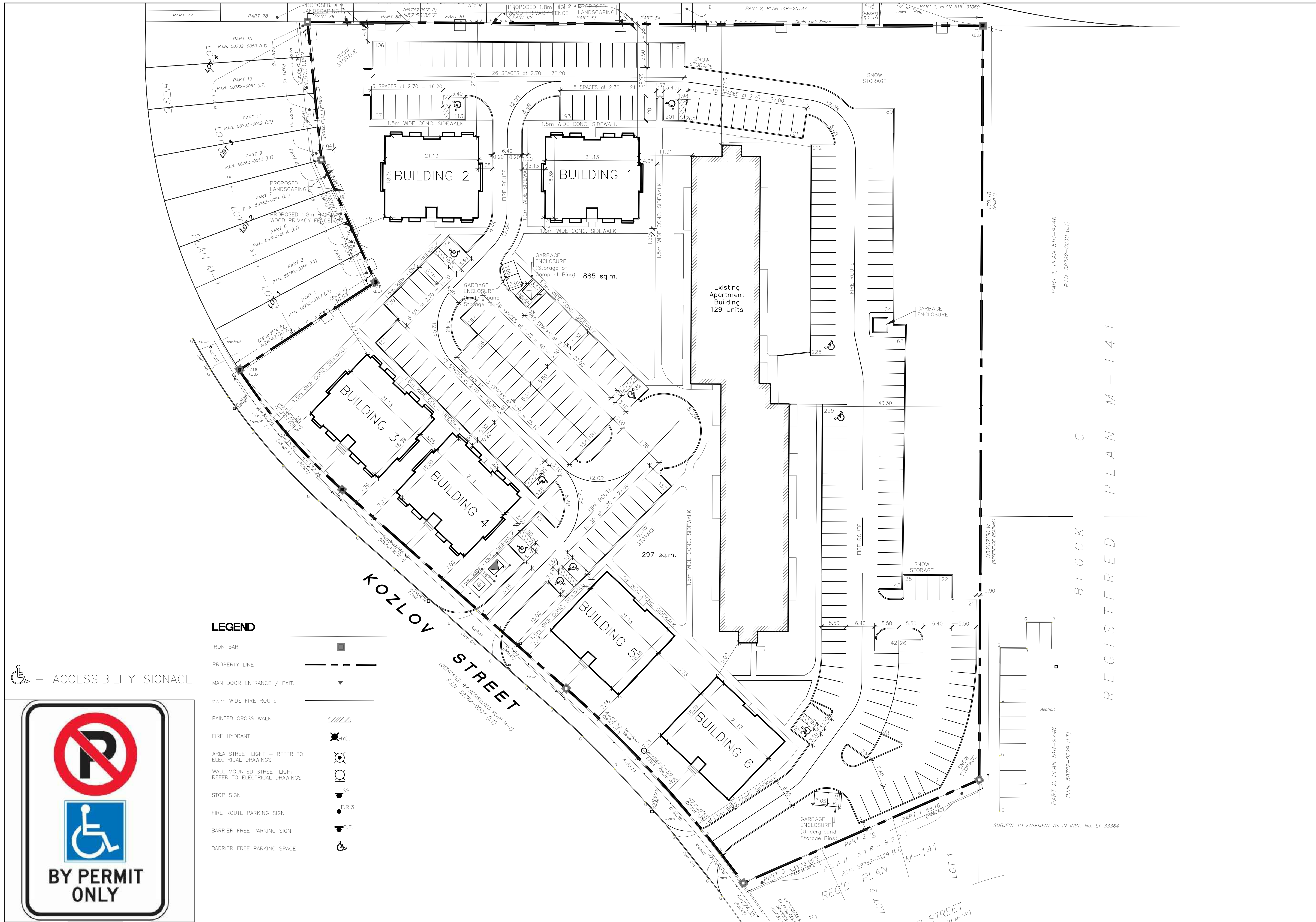
	REQUIRED	PROPOSED
SP.548		
Parking Spaces/Unit	1.15/unit	254(1.17/unit)
Barrier Free Spaces	-	11
Density	92uph	92uph
Outdoor Amenity Area	1,056sq.m	1,182sq.m
Total Amenity Area	834sq.m	885sq.m
Gross Floor Area	85%	84.90%
Building Height	12 m	12 m
Side Yard Set Back (min)	6 m	7.24 m
N. Side Yard Setback	25 m	25.59 m
N. Lot Line Landscape Buffer	4 m	4.33 m
Building Setback (apt-stacked)	9 m	9.00 m

NO.	REVISION	DATE	INITIAL

101 Kozlov Street,  
Barrie  
Moscovitch, Scott



DRAWN BY KC	PROJECT NO. MSK/BAR/19-01
DATE JUNE 2021	SCALE 1:1,000



- LEGEND**
- IRON BAR
  - PROPERTY LINE
  - MAN DOOR ENTRANCE / EXIT
  - 6.0m WIDE FIRE ROUTE
  - PAINTED CROSS WALK
  - FIRE HYDRANT
  - AREA STREET LIGHT - REFER TO ELECTRICAL DRAWINGS
  - WALL MOUNTED STREET LIGHT - REFER TO ELECTRICAL DRAWINGS
  - STOP SIGN
  - FIRE ROUTE PARKING SIGN
  - BARRIER FREE PARKING SIGN
  - BARRIER FREE PARKING SPACE



BLOCK C REGISTERED PLAN M-141