

12th AUGUST 2019  
ISSUED FOR S.P.A  
NOT FOR CONSTRUCTION

2.	12 AUG. 2019	ISSUED FOR S.P.A	MG
1.	17 OCT. 2018	ISSUED FOR PRE -CON. MEETING	SB
No.	Date	Version	Dwn.

This drawing is copyright property of 'n Architecture Inc'. Not to be reproduced. Contractor must verify all job dimensions, drawings, details and specifications and report any discrepancies to the architect before proceeding with work.

PROJECT:

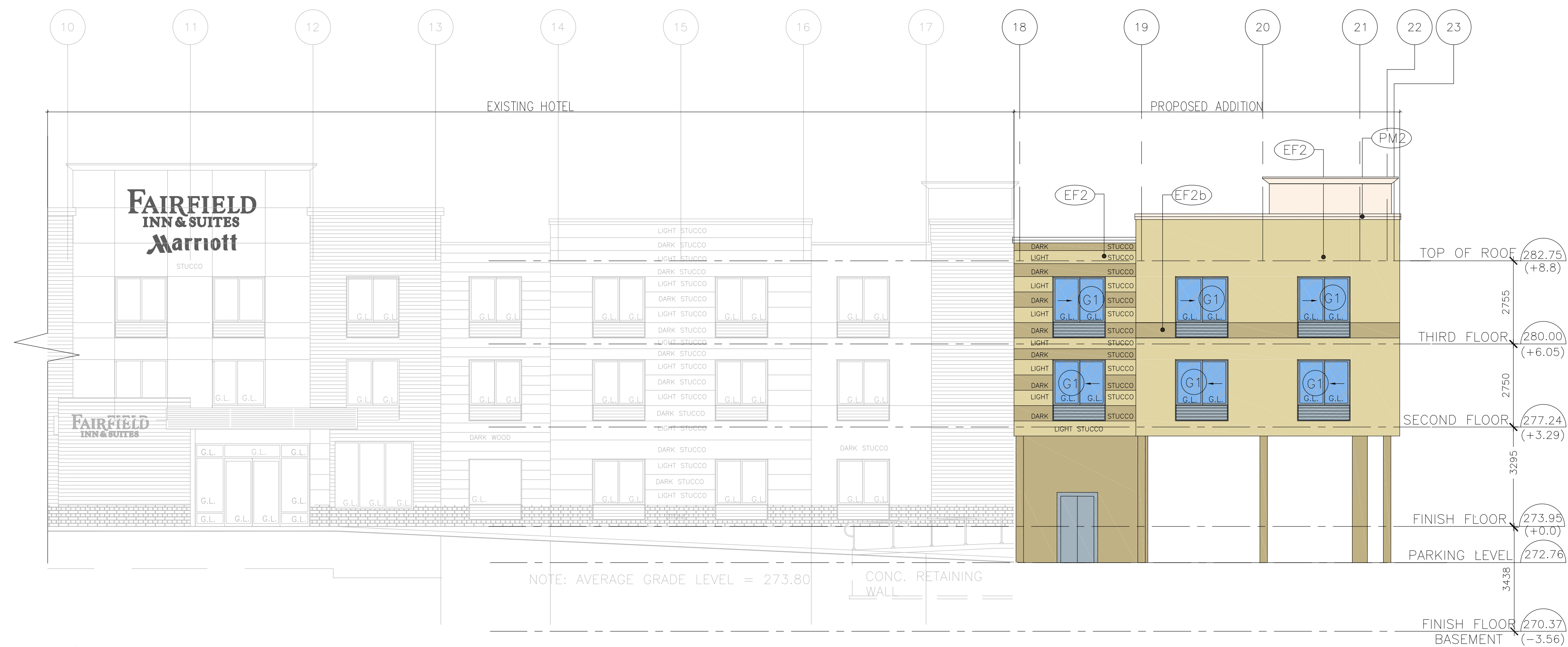
**PROPOSED ADDITION TO  
FAIRFIELD INN AND SUITES  
(MARRIOTT)  
261 ESSA ROAD BARRIE,  
ONTARIO**

DRAWING TITLE:

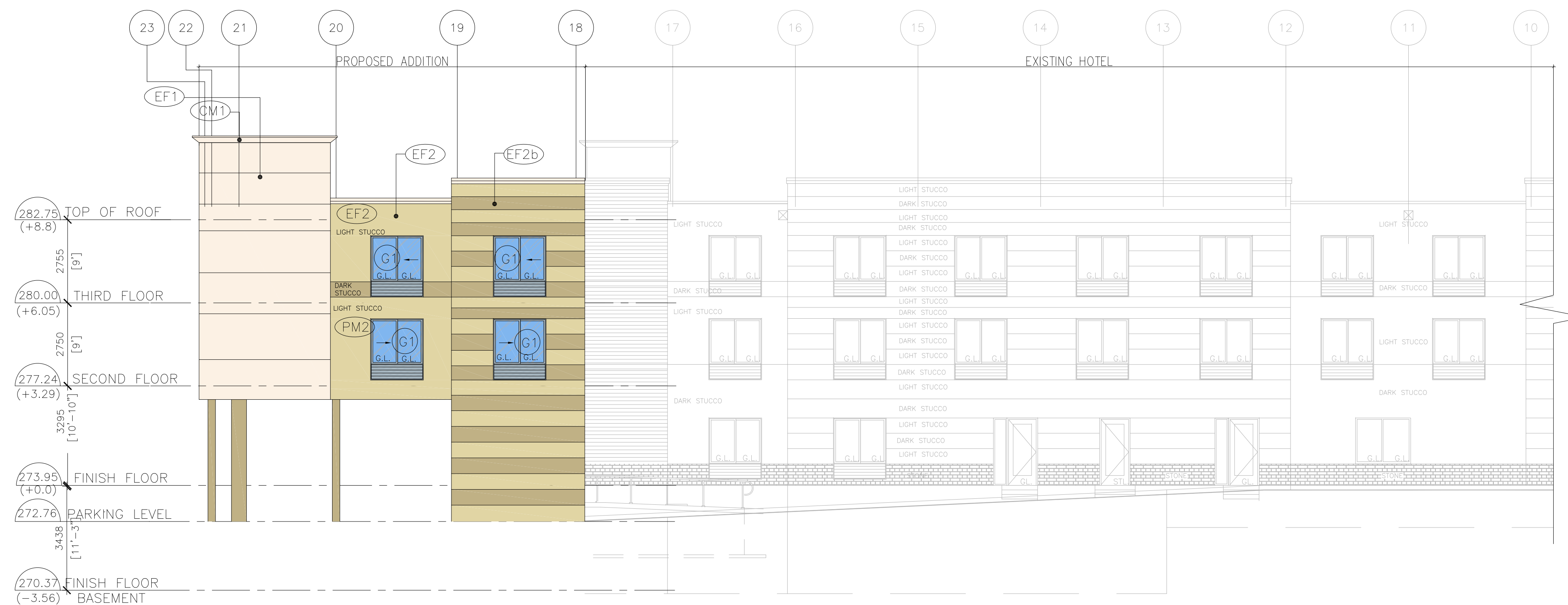
**BUILDING ELEVATION**

DRAWN BY: MG	DATE: 2019 AUG. 12
CHECKED BY: NM	SCALE: AS NOTED
PROJECT NO.:	DRAWING NO.:

13-15	A-3.0
-------	-------



1 FRONT (EAST) ELEVATION  
A-3.0a SCALE:1:100



2 REAR (WEST) ELEVATION  
A-3.0a SCALE:1:100



**n Architecture Inc**

PRINCIPAL: NITIN MALHOTRA, ARCHITECT.  
9120 Leslie Street, Suite-208  
Richmond Hill, Ontario. L4B 3J9  
T: 416.303.4821 F: 1.866.340.5265  
E: info@narchitecture.com  
www.narchitecture.com



12th AUGUST 2019  
ISSUED FOR S.P.A  
NOT FOR CONSTRUCTION

2.	12 AUG. 2019	ISSUED FOR S.P.A	MG
1.	17 OCT. 2018	ISSUED FOR PRE-CON. MEETING	SB
No.	Date	Version	Dwn.

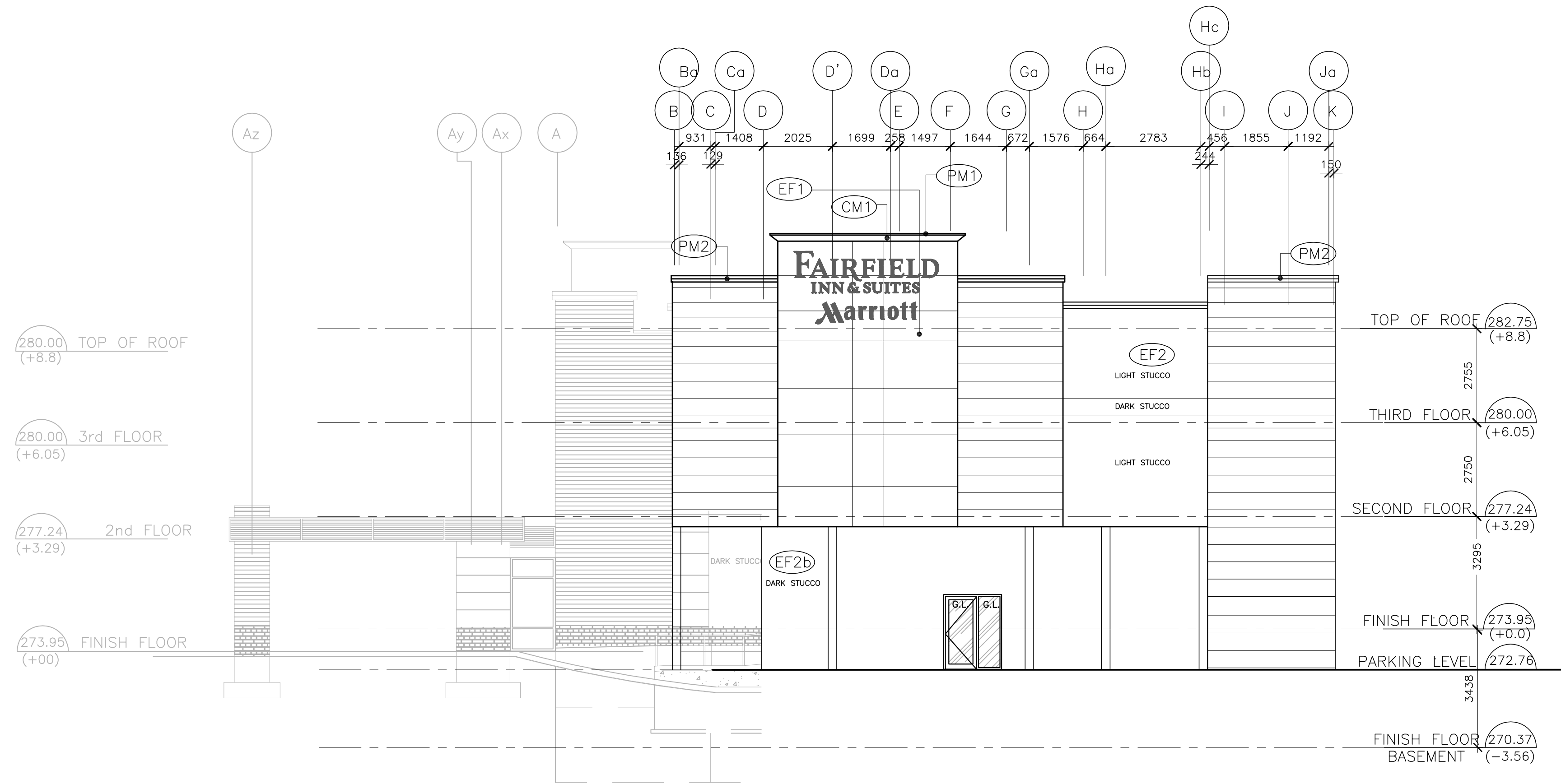
This drawing is copyright property of 'n Architecture Inc'. Not to be reproduced. Contractor must verify all job dimensions, drawings, details and specifications and report any discrepancies to the architect before proceeding with work.

PROJECT:  
**PROPOSED ADDITION TO  
FAIRFIELD INN AND SUITES  
(MARRIOTT)  
261 ESSA ROAD BARRIE,  
ONTARIO**

DRAWING TITLE:  
**BUILDING ELEVATION  
(COLOURED)**

DRAWN BY: MG	DATE: 2019 AUG. 12
CHECKED BY: NM	SCALE: AS NOTED
PROJECT NO.:	DRAWING NO.:

**13-15 A-3.0a**



1 SIDE (NORTH) ELEVATION  
A-3.1 SCALE:1:100



n Architecture Inc

PRINCIPAL: NITIN MALHOTRA, ARCHITECT.  
9120 Leslie Street, Suite-208  
Richmond Hill, Ontario. L4B 3J9  
T:416.303.4821 F:1.866.340.5265  
E: info@narchitecture.com  
www.narchitecture.com

30 JULY 2019

12th AUGUST 2019  
ISSUED FOR S.P.A  
NOT FOR CONSTRUCTION

2.	30 JULY 2019	ISSUED FOR S.P.A	MG
1.	17 OCT. 2018	ISSUED FOR PRE -CON. MEETING	SB
No.	Date	Version	Dwn.

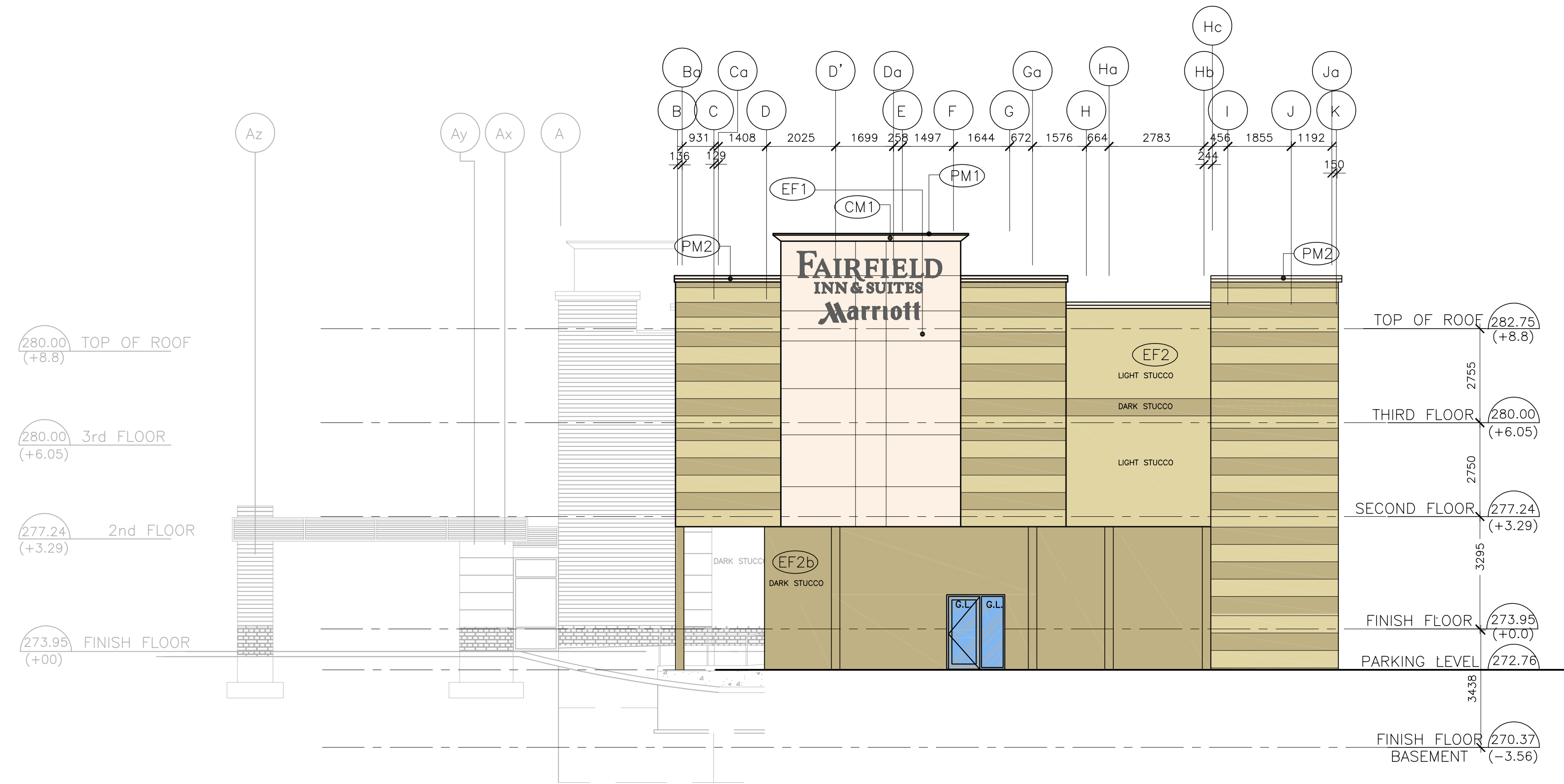
This drawing is copyright property of  
'n Architecture Inc'. Not to be reproduced.  
Contractor must verify all job dimensions,  
drawings, details and specifications and report  
any discrepancies to the architect before  
proceeding with work.

PROJECT:  
**PROPOSED ADDITION TO  
FAIRFIELD INN AND SUITES  
(MARRIOTT)  
261 ESSA ROAD BARRIE,  
ONTARIO**

DRAWING TITLE:  
**BUILDING ELEVATION**

DRAWN BY: MG	DATE: 2019 JULY 30
CHECKED BY: NM	SCALE: AS NOTED
PROJECT NO.:	DRAWING NO.:

**13-15** **A-3.1**



1  
A-3.1a  
SIDE (NORTH) ELEVATION  
SCALE:1:100



n Architecture Inc

PRINCIPAL: NITIN MALHOTRA, ARCHITECT.  
9120 Leslie Street, Suite-208  
Richmond Hill, Ontario. L4B 3J9  
T:416.303.4821 F:1.866.340.5265  
E: info@narchitecture.com  
www.narchitecture.com

30 JULY 2019

12th AUGUST 2019  
ISSUED FOR S.P.A  
NOT FOR CONSTRUCTION

2.	30 JULY 2019	ISSUED FOR S.P.A	MG
1.	17 OCT. 2018	ISSUED FOR PRE -CON. MEETING	SB
No.	Date	Version	Dwn.

This drawing is copyright property of  
'n Architecture Inc'. Not to be reproduced.  
Contractor must verify all job dimensions,  
drawings, details and specifications and report  
any discrepancies to the architect before  
proceeding with work.

PROJECT:  
**PROPOSED ADDITION TO  
FAIRFIELD INN AND SUITES  
(MARRIOTT)  
261 ESSA ROAD BARRIE,  
ONTARIO**

DRAWING TITLE:  
**BUILDING ELEVATION  
(COLOURED)**

DRAWN BY: MG	DATE: 2019 JULY 30
CHECKED BY: NM	SCALE: AS NOTED

PROJECT NO.:	DRAWING NO.:
<b>13-15</b>	<b>A-3.1a</b>