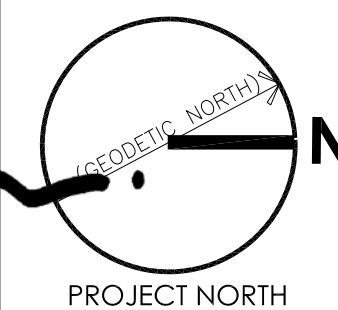
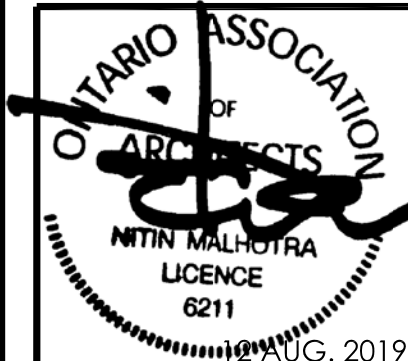




n Architecture Inc

PRINCIPAL: NITIN MALHOTRA, ARCHITECT.  
9120 Leslie Street, Suite-208  
Richmond Hill, Ontario. L4B 3J9  
T:416.303.4821 F:1.866.340.5265  
E: info@narchitecture.com  
www.narchitecture.com



12th AUGUST 2019  
ISSUED FOR S.P.A  
NOT FOR CONSTRUCTION

2.	12 AUG. 2019	ISSUED FOR S.P.A	MG
1.	17 OCT. 2018	ISSUED FOR PRE-CON. MEETING	SB
No.	Date	Version	Dwn.

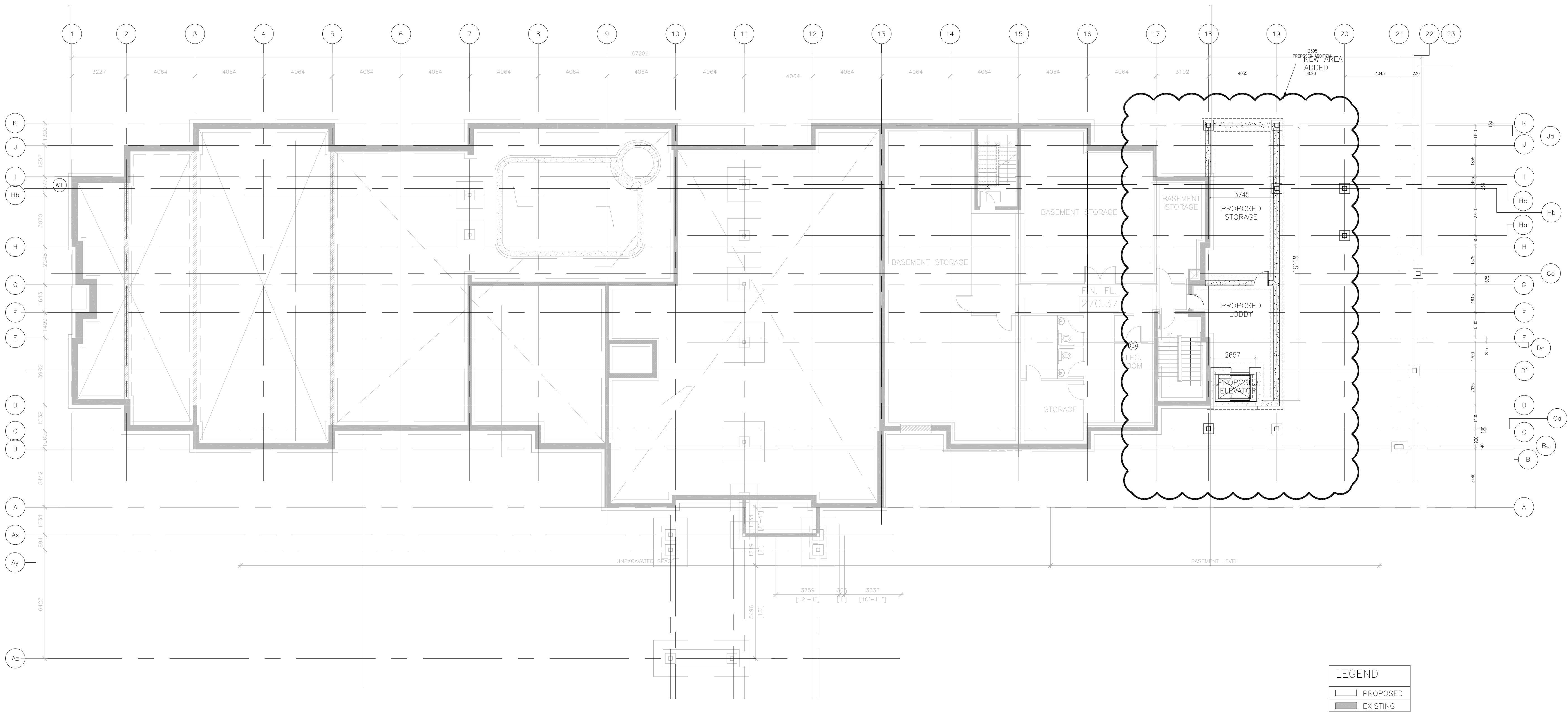
This drawing is copyright property of 'n Architecture Inc'. Not to be reproduced. Contractor must verify all job dimensions, drawings, details and specifications and report any discrepancies to the architect before proceeding with work.

PROJECT:  
**PROPOSED ADDITION TO  
FAIRFIELD INN AND SUITES  
(MARRIOTT)  
261 ESSA ROAD BARRIE,  
ONTARIO**

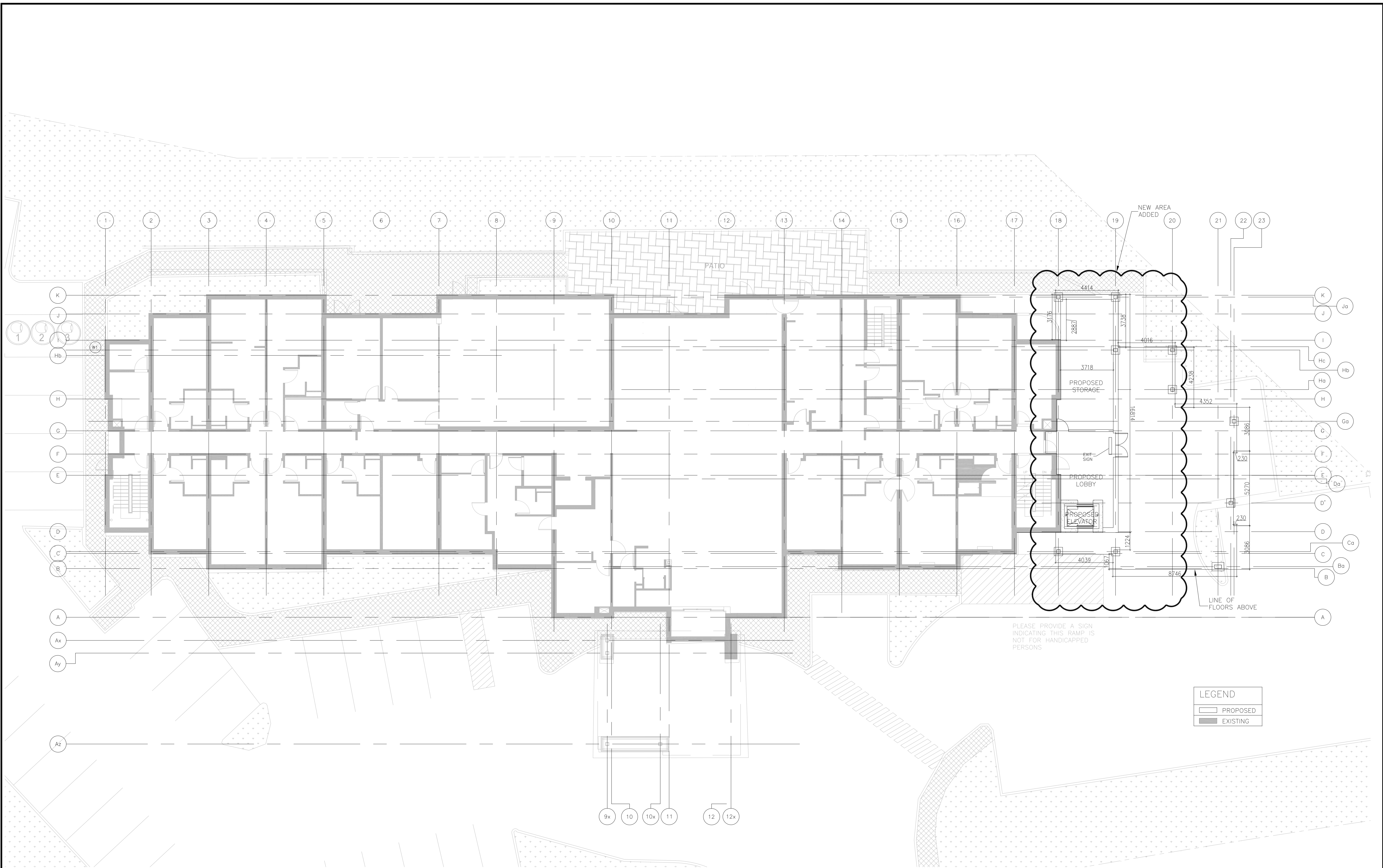
DRAWING TITLE:  
**BASEMENT PLAN**

DRAWN BY: MG	DATE: 2019 AUG. 12
CHECKED BY: NM	SCALE: AS NOTED
PROJECT NO.:	DRAWING NO.:

**13-15 A-2.0**

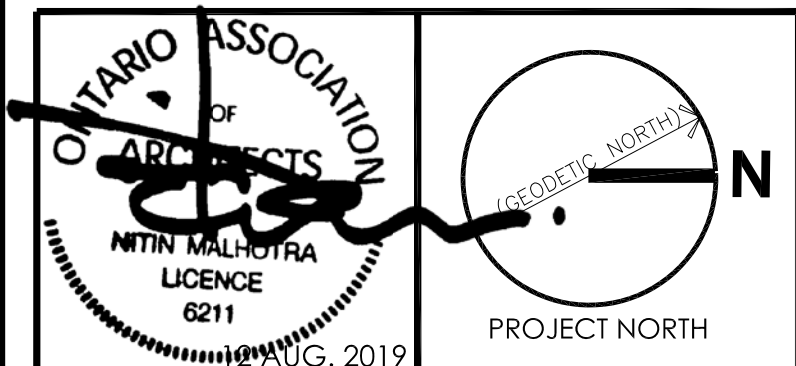


**1 BASEMENT PLAN**  
**A-2.0 SCALE:1:125**



**n Architecture Inc**

PRINCIPAL: NITIN MALHOTRA, ARCHITECT.  
9120 Leslie Street, Suite-208  
Richmond Hill, Ontario. L4B 3J9  
T: 416.303.4821 F: 1.866.340.5265  
E: info@narchitecture.com  
www.narchitecture.com



12th AUGUST 2019  
ISSUED FOR S.P.A  
NOT FOR CONSTRUCTION

2.	12 AUG. 2019	ISSUED FOR S.P.A	MG
1.	17 OCT. 2018	ISSUED FOR PRE-CON. MEETING	SB
No.	Date	Version	Dwn.

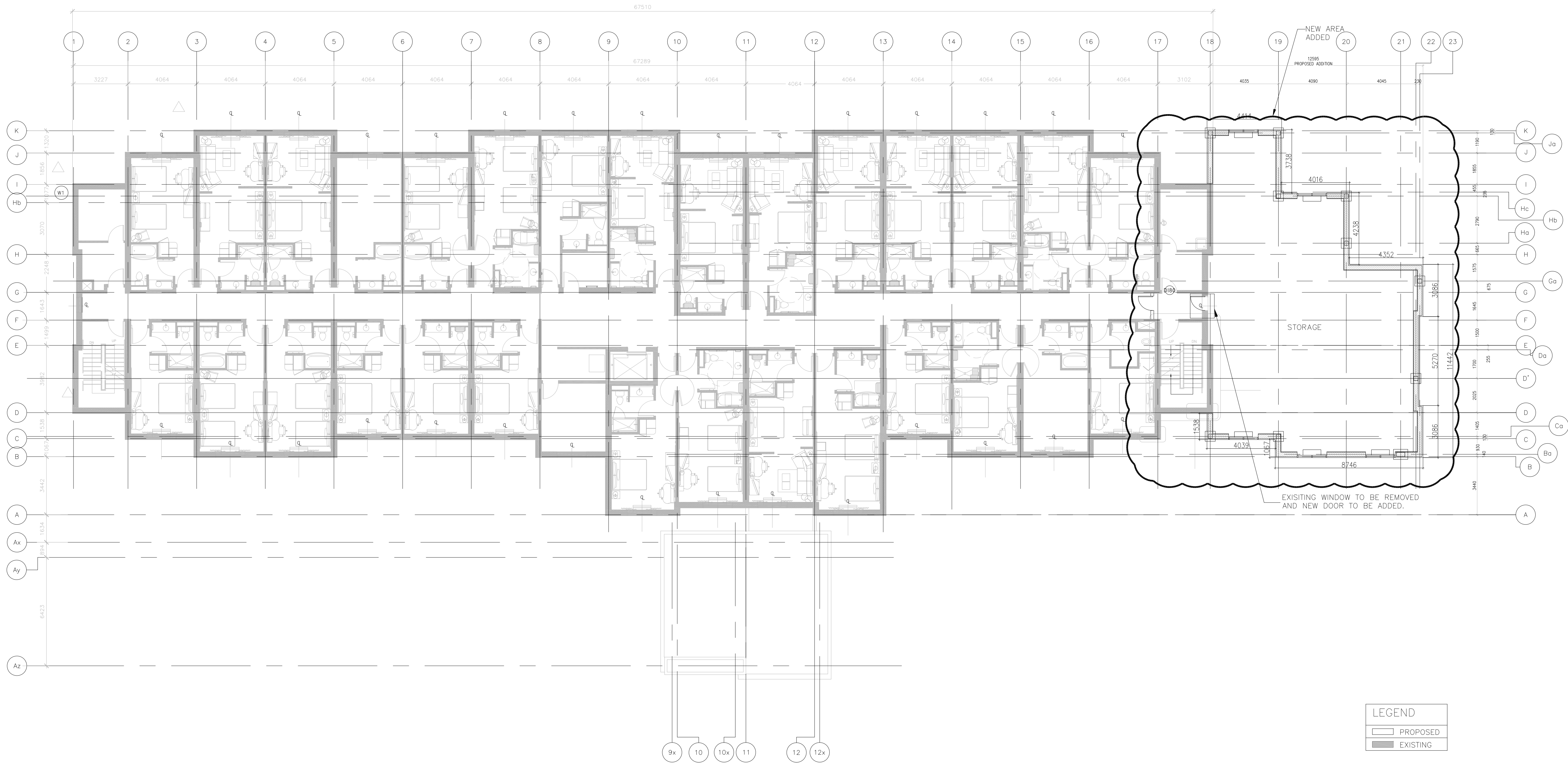
This drawing is copyright property of 'n Architecture Inc'. Not to be reproduced. Contractor must verify all job dimensions, drawings, details and specifications and report any discrepancies to the architect before proceeding with work.

PROJECT:  
**PROPOSED ADDITION TO  
FAIRFIELD INN AND SUITES  
(MARRIOTT)  
261 ESSA ROAD BARRIE,  
ONTARIO**

DRAWING TITLE:  
**FIRST FLOOR PLAN**

DRAWN BY: MG	DATE: 2019 AUG. 12
CHECKED BY: NM	SCALE: AS NOTED
PROJECT NO.:	DRAWING NO.:

**13-15 A-2.1**



n

n Architecture Inc

PRINCIPAL: NITIN MALHOTRA, ARCHITECT.  
9120 Leslie Street, Suite-208  
Richmond Hill, Ontario. L4B 3J9  
T:416.303.4821 F:1.866.340.5265  
E: info@narchitecture.com  
www.narchitecture.com

ONTARIO ASSOCIATION OF ARCHITECTS  
NITIN MALHOTRA  
LICENCE 6211  
22 AUG. 2019

PROJECT NORTH

(GEODETIC NORTH)

22nd AUGUST 2019  
ISSUED FOR S.P.A  
NOT FOR CONSTRUCTION

2.	22 AUG. 2019	ISSUED FOR S.P.A	MG
1.	17 OCT. 2018	ISSUED FOR PRE-CON. MEETING	SB
No.	Date	Version	Dwn.

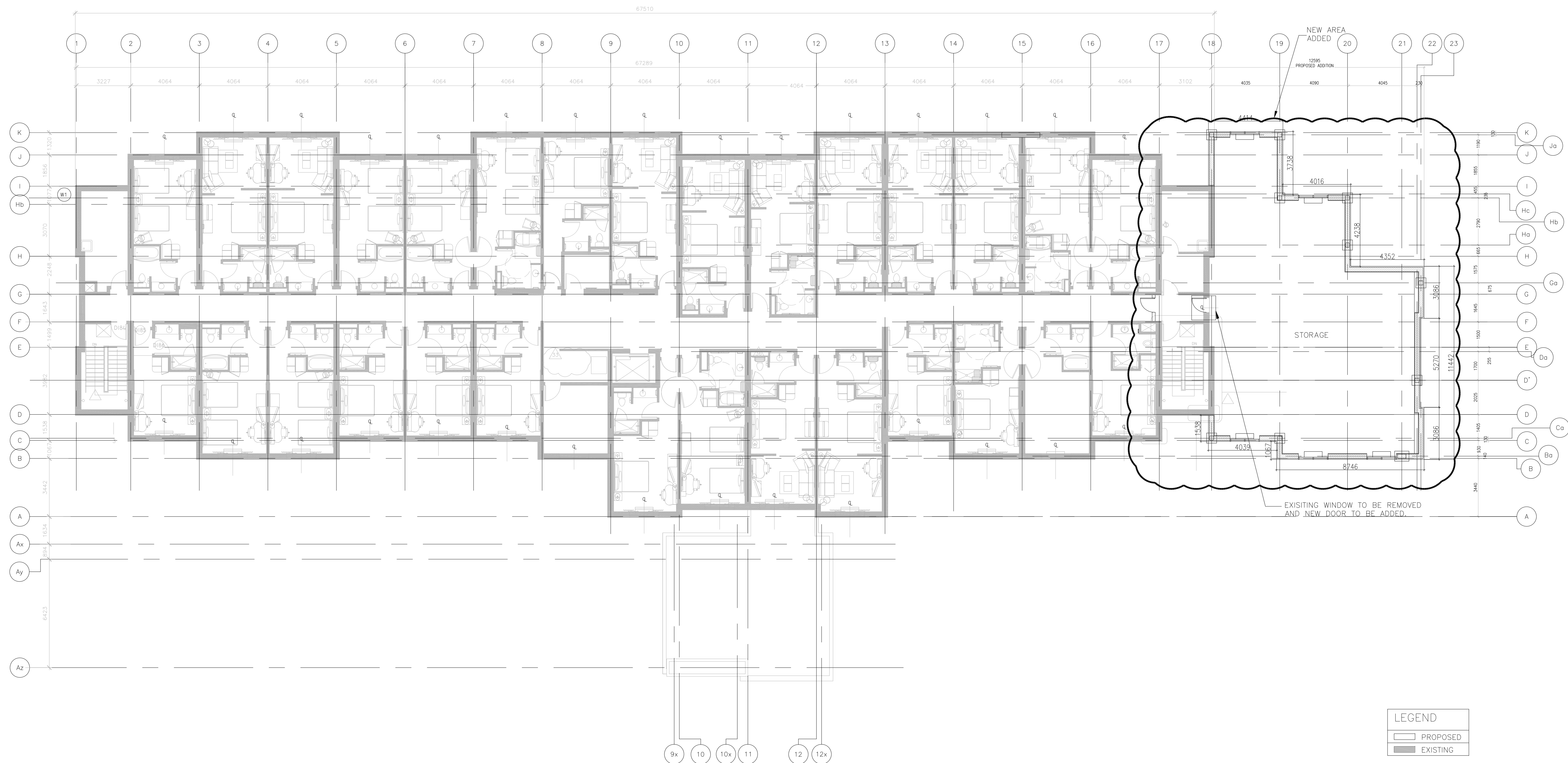
This drawing is copyright property of 'n Architecture Inc'. Not to be reproduced. Contractor must verify all job dimensions, drawings, details and specifications and report any discrepancies to the architect before proceeding with work.

PROJECT:  
**PROPOSED ADDITION TO  
FAIRFIELD INN AND SUITES  
(MARRIOTT)  
261 ESSA ROAD BARRIE,  
ONTARIO**

DRAWING TITLE:  
**SECOND FLOOR PLAN**


DRAWN BY: MG	DATE: 2019 AUG. 12
CHECKED BY: NM	SCALE: AS NOTED
PROJECT NO.:	DRAWING NO.:
<b>13-15</b>	<b>A-2.2</b>

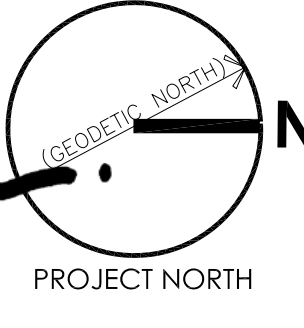






**n Architecture Inc**  
PRINCIPAL: NITIN MALHOTRA, ARCHITECT.  
9120 Leslie Street, Suite-208  
Richmond Hill, Ontario. L4B 3J9  
T:416.303.4821 F:1.866.340.5265  
E: info@narchitecture.com  
www.narchitecture.com





PROJECT NORTH

22nd AUGUST 2019  
ISSUED FOR S.P.A  
NOT FOR CONSTRUCTION

2.	22 AUG. 2019	ISSUED FOR S.P.A	MG
1.	17 OCT. 2018	ISSUED FOR PRE-CON. MEETING	SB
No.	Date	Version	Dwn.

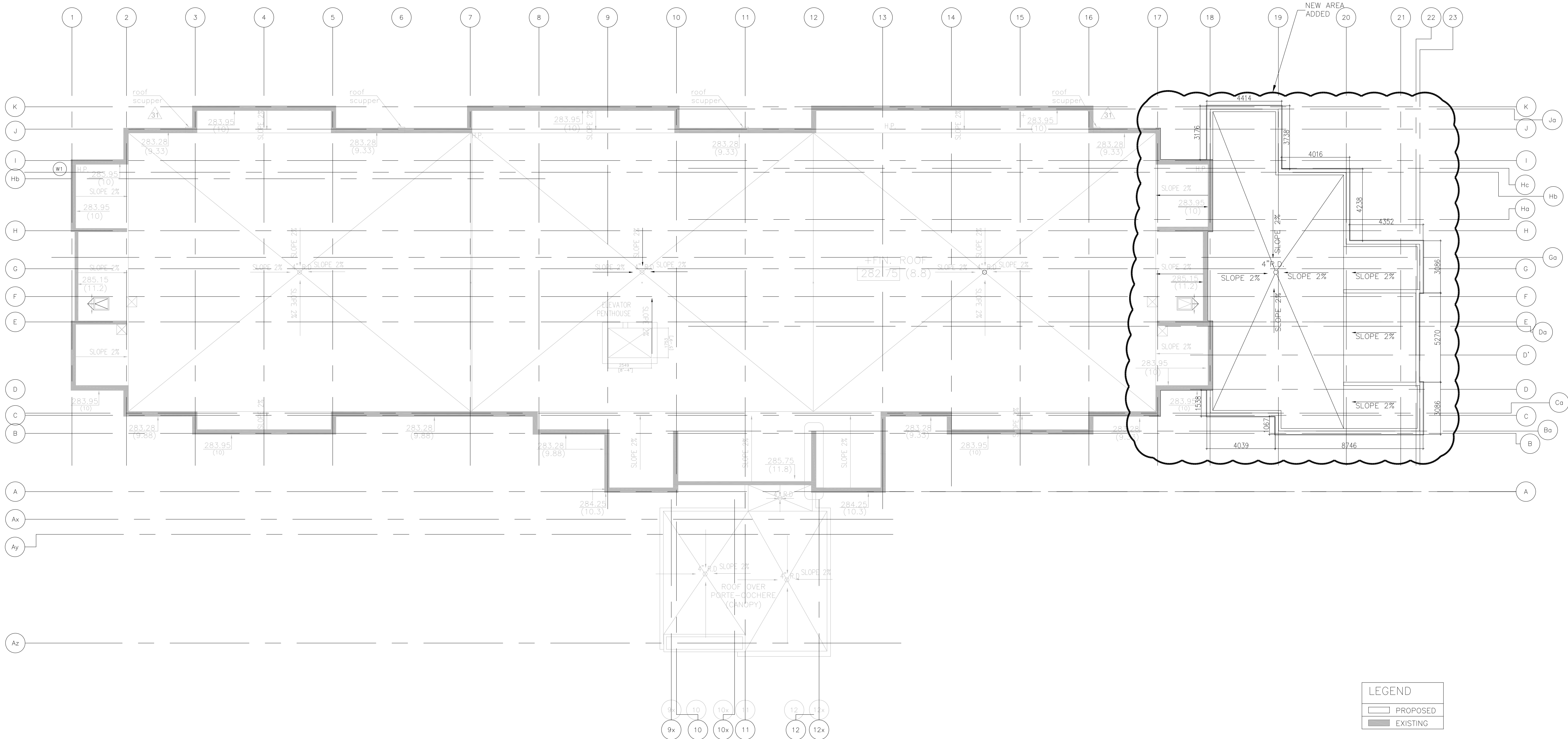
This drawing is copyright property of 'n Architecture Inc'. Not to be reproduced. Contractor must verify all job dimensions, drawings, details and specifications and report any discrepancies to the architect before proceeding with work.

PROJECT:  
**PROPOSED ADDITION TO  
FAIRFIELD INN AND SUITES  
(MARRIOTT)  
261 ESSA ROAD BARRIE,  
ONTARIO**

DRAWING TITLE:  
**THIRD FLOOR PLAN**

DRAWN BY: MG	DATE: 2019 AUG. 12
CHECKED BY: NM	SCALE: AS NOTED
PROJECT NO.:	DRAWING NO.:

**13-15**  
**A-2.3**

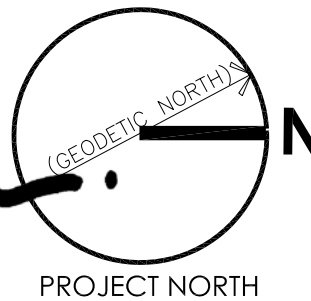


1 ROOF PLAN  
A-2.4 SCALE:1:125



n Architecture Inc

PRINCIPAL: NITIN MALHOTRA, ARCHITECT.  
9120 Leslie Street, Suite-208  
Richmond Hill, Ontario. L4B 3J9  
T:416.303.4821 F:1.866.340.5265  
E: info@narchitecture.com  
www.narchitecture.com



12th AUGUST 2019  
ISSUED FOR S.P.A  
NOT FOR CONSTRUCTION

2.	12 AUG. 2019	ISSUED FOR S.P.A	MG
1.	17 OCT. 2018	ISSUED FOR PRE-CON. MEETING	SB
No.	Date	Version	Dwn.

This drawing is copyright property of 'n Architecture Inc'. Not to be reproduced. Contractor must verify all job dimensions, drawings, details and specifications and report any discrepancies to the architect before proceeding with work.

PROJECT:  
**PROPOSED ADDITION TO  
FAIRFIELD INN AND SUITES  
(MARRIOTT)  
261 ESSA ROAD BARRIE,  
ONTARIO**

DRAWING TITLE:  
**ROOF PLAN**

DRAWN BY: MG	DATE: 2019 AUG. 12
CHECKED BY: NM	SCALE: AS NOTED
PROJECT NO.:	DRAWING NO.:

13-15 A-2.4