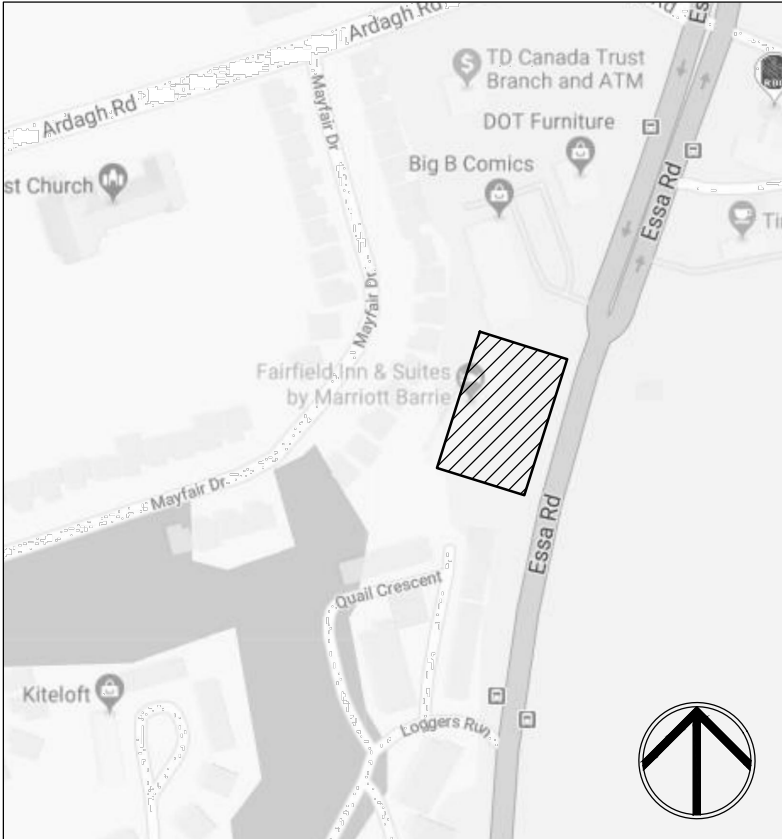


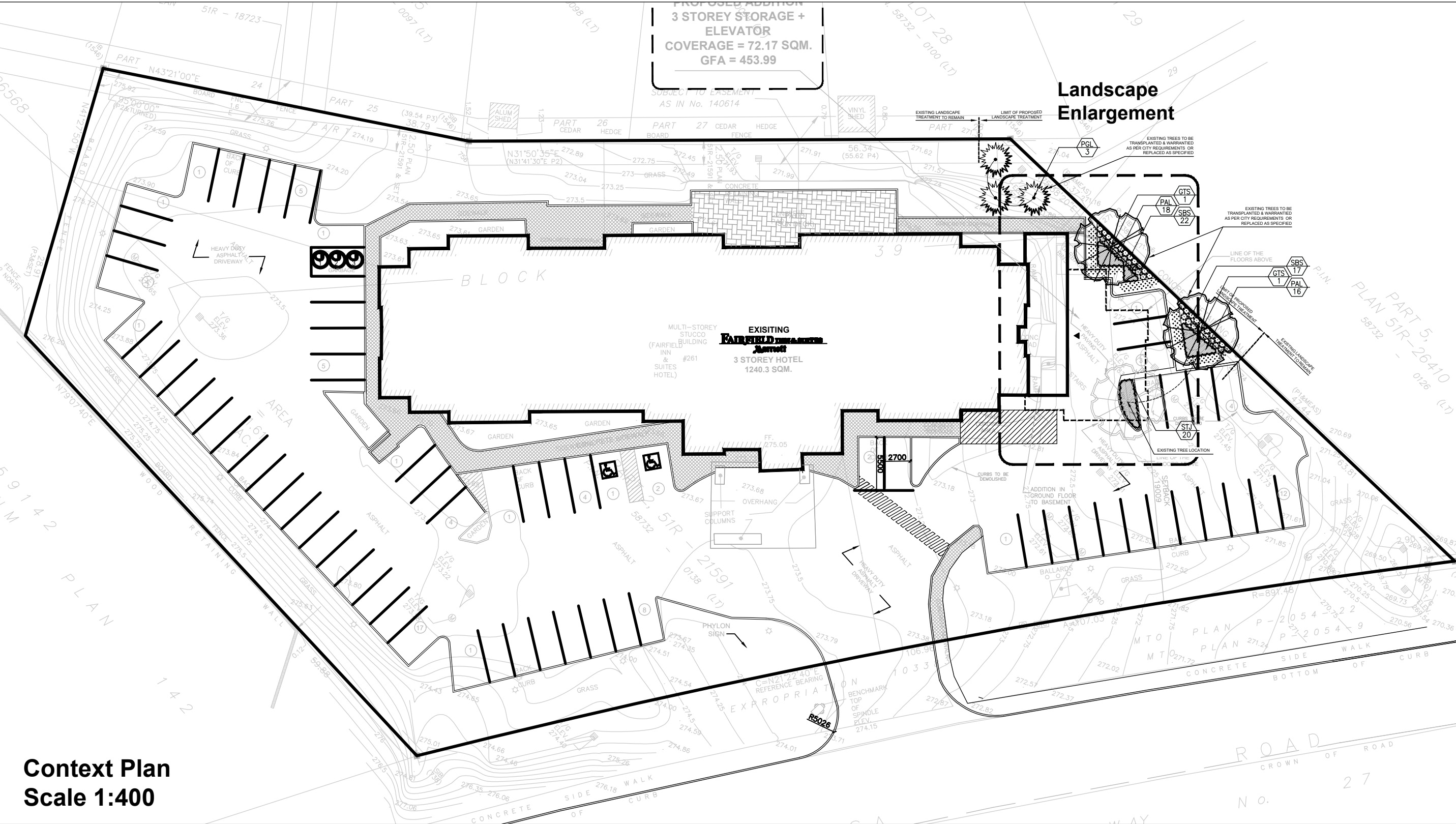
Legend

- Property Line
- Proposed Deciduous Tree
- Proposed Coniferous Tree
- Prop. Sodded Area Typ.
- Plant Material Reference Key



Proposed Plant Material List

KEY	QNTY	BOTANICAL NAME	COMMON NAME	HT/CAL	SPREAD	ROOT	DROUGHT TOLERANT	NATIVE	REMARKS
DECIDUOUS TREES									
GTS		Gleditsia triacanthos 'Shademaster'	Sunburst Honey-Locust	70 mm		B.&B.	Yes	Yes	Full Form
CONIFEROUS TREES									
PGL		Picea glauca	White Spruce	350 cm		B.&B.	Yes	Yes	Full Form
DECIDUOUS SHRUBS									
SBS		Spirea bumalda 'Snow Mound'	Snow Mound Spirea	50 cm		C.G.	High	Yes	Full Form
PERENNIALS AND GRASSES									
PAL		Pennisetum alopecuroides 'Hameln'	Hameln Dwarf Fountain Grass			2 Gal.	Yes	No	Full Form
STJ		Sedum telephium 'Autumn Joy'	Autumn Joy Sedum			2 Gal.	Yes	No	Full Form



msla
MARTON SMITH LANDSCAPE ARCHITECTS
170 The Donway W Suite 206,
Toronto, Ontario, Canada. M3C 2G3
tel. 416.492.9966 | email: info@msla.ca

Architect: **n Architecture Inc**
PRINCIPAL: NTIN MALHOTRA, ARCHITECT
9120 Leslie Street, Suite 208,
Richmond Hill, ON L4B 3J9
T: 416.293.4821 F: 1.888.340.5265
E: info@narchitecture.com
www.narchitecture.com

Client/Owner:

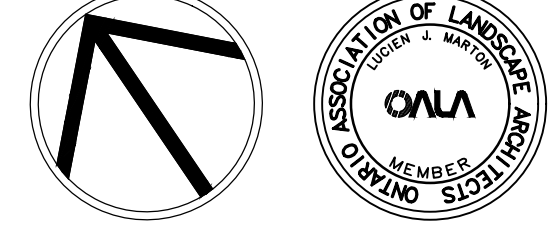
Municipality:

Notes:

01 Issued for Review 08/21/19

No. Revision Date

North: Stamp:



Project:
Proposed Landscape and Site Upgrades
261 Essa Road
Barrie, Ontario

Scale: 1:150 Date: Aug 2019

Drawn By: S.P. Checked By: L.M.

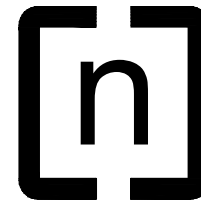
Drawing Title:

Landscape Plan

Project No. 19154 Sheet No. L1-01

All information contained in these plans shall be checked by the contractor. All discrepancies shall be reported to the Landscape Architect (L.A.) before construction. All drawings have copyright and shall remain the property of the Landscape Architect. Copying or any reproduction in part or whole shall only be permitted with written consent of L.A. Drawings shall not be used for construction unless sealed & SIGNED.
NOTE: FOR ANY AND ALL GRADING INFORMATION REFER TO SITE GRADING ENGINEERING DRAWINGS. NO SLOPES ARE TO EXCEED 3:1. PROPERTY LINES AND SETBACKS MUST BE CONFIRMED BY CONTRACTOR PRIOR TO CONSTRUCTION. ANY AND ALL RETAINING WALLS MUST BE APPROVED BY STRUCTURAL ENGINEER PRIOR TO CONSTRUCTION.
DO NOT SCALE DRAWINGS • PRELIMINARY NOT FOR CONSTRUCTION • THESE DRAWINGS ARE NOT TO BE USED FOR CONSTRUCTION UNTIL COUNTERSIGNED BY L.A. ARCHITECT • SIGNED _____ DATE _____

Architect:



n Architecture Inc

PRINCIPAL: NITIN MALHOTRA, ARCHITECT
9120 Leslie Street, Suite 208,
Richmond Hill, ON L4B 3J9
T: 416.293.4821 F: 1.888.340.5265
E: info@narchitecture.com
www.narchitecture.com

Client/Owner:

Municipality:

Notes:

ALL INFORMATION CONTAINED IN THESE PLANS SHALL BE CHECKED BY THE CONTRACTOR. ALL DISCREPANCIES SHALL BE REPORTED TO THE LANDSCAPE ARCHITECT (L.A.) BEFORE COMMENCING WORK. THESE DRAWINGS ARE NOT TO BE USED FOR CONSTRUCTION UNTIL COUNTERSIGNED BY L.A. ARCHITECT. • SIGNED _____ DATE _____

REFER TO PLAN FOR LOCATION

LANDSCAPE SPECIFICATIONS

CONTRACTOR MUST CONTACT ALL UTILITY COMPANIES FOR STAKE OUTS PRIOR TO ANY EXCAVATION OR PLANTING.

ROUGH GRADING

ROUGH GRADE AND FILL AREAS TO ESTABLISH SUBGRADE AS REQUIRED. PROVIDE DRAINAGE PATTERN AS INDICATED ON DRAWINGS. ROUND SMOOTHLY ALL TOPS AND TOES OF SLOPES. COMPACT ALL AREAS TO 98% STANDARD PROCTOR DENSITY UNLESS SPECIFIED OTHERWISE. EXISTING TREES TO REMAIN ON SITE ARE TO BE PROTECTED AS DETAILED.

FINE GRADING

FINE GRADE ALL AREAS TO FINISHED GRADES AS SHOWN ON LAYOUT OR GRADING PLAN OR ARCHITECT'S SITE PLAN. PROVIDE UNIFORM SLOPES AWAY FROM THE BUILDING, UNLESS SPECIFIED OTHERWISE. SLOPES MAY NOT EXCEED 3:1 (3:1).

SPREADING OF TOPSOIL

SCARIFY THE SUBSOIL PRIOR TO THE SPREADING THE TOPSOIL. REMOVE ALL DEBRIS AND LEAVE A FINE-TEXTURED EVEN SURFACE. ALL TOPSOIL TO BE IMPORTED UNLESS PREVIOUSLY APPROVED BY LANDSCAPE ARCHITECT. OBTAIN APPROVAL FOR THE QUALITY OF ANY IMPORTED TOPSOIL BEFORE DELIVERY TO THE SITE. TOPSOIL IS TO BE COMPACTED TO CREATE A FIRM AND EVEN SURFACE.

SOD

USE NO. 1 GRADE TURFGRASS NURSERY SOD WHICH CONFORMS WITH THE SPECIFICATIONS OF THE NURSERY SOD GROWERS ASSOCIATION OF ONTARIO. ALL LAWN AREAS SHALL RECEIVE A MINIMUM OF 100MM (4") OF COMPACTED TOPSOIL, AND SHALL BE SODDED WITH #1 KENTUCKY BLUEGRASS - FESCUE. NO SOD SLOPES ARE TO EXCEED 3:1. SLOPE IN EXCESS OF 4:1 TO BE PEGGED.

MINERAL FERTILIZER

APPLY THE FOLLOWING MINERAL FERTILIZER UNLESS SOILS TESTS SHOW OTHER REQUIREMENTS:

1. SODDED AREAS - 11% NITROGEN, 8% PHOSPHORUS AND 4% POTASH (11-8-4) AT THE RATE OF 4.5 KG OVER M2 (10 LBS OVER 1000 SQ. FT.).

2. PLANTING BEDS - 7% NITROGEN, 7% PHOSPHORUS AND 7% POTASH (7-7-7) AT THE RATE OF 40 GRAMS (4 OZ.) FOR EVERY BUSHEL OF TOPSOIL.

PREPARATION OF PLANTING BEDS

ALL PLANT BEDS TO BE CONTINUOUS. EXCAVATE ALL PLANTING BEDS TO THE DEPTH AS INDICATED ON THE DRAWINGS AND DETAILS. MIN 60mm (6") BACKFILL ALL PLANTING BEDS WITH A SOIL MIXTURE CONSISTING OF SIX (6) PARTS OF SAND LOAM, ONE (1) PART OF FINELY PULVERIZED PEAT MOSS, TWO (2) PARTS OF WELL-ROTTED MANURE AND THE MINERAL FERTILIZER AS SPECIFIED ABOVE. ALSO ADD 58 KILOS BONEMEAL/CUBIC METER OF PLANTING SOIL (1 LB./CUBIC YARD). PREPARE THE PLANTING BEDS FOR PLANTING BEFORE THE DELIVERY OF THE PLANT MATERIAL TO THE JOB SITE.

NOTE: IF THE EXISTING SOIL CONDITIONS ARE CLAY OR WET IN NATURE, CONTACT THE LANDSCAPE ARCHITECT FOR INSTRUCTIONS OF A SUITABLE SOIL MIXTURE. FAILURE TO DO THIS MAY RESULT IN DELAY OF APPROVAL AND ACCEPTANCE.

PLANT MATERIALS

ALL PLANT MATERIAL SHALL CONFORM TO THE STANDARDS OF THE CANADIAN NURSERY TRADES ASSOCIATION FOR SIZE AND SPECIES.

ALL SHRUB AND TREE MATERIAL SHALL BE CONTAINER GROWN, POTTED, S/B OR B/B, UNLESS OTHERWISE NOTED. BARE ROOT PLANTING SHALL BE ACCEPTABLE FOR CERTAIN SPECIES DURING EARLY SPRING OR LATE FALL PLANTING SEASON. CONTRACTOR SHALL MAKE REQUESTS FOR ROOT CONDITION SUBSTITUTION IN WRITING TO THE LANDSCAPE ARCHITECT PRIOR TO COMMENCEMENT OF PLANTING OPERATIONS. ALL PLANT MATERIAL TO BE CLAY GROWN STOCK UNLESS OTHERWISE NOTED.

LANDSCAPE SPECIFICATIONS

SCALE: N.T.S. DATE: LD01

REFER TO PLAN FOR LOCATION

PLANT MATERIAL INSTALLATION

ALL TREES, SHRUBS AND GROUNDCOVERS SHALL BE PLANTED AS DETAILED & AS SHOWN ON THE PLANTING PLAN. ALL BEDS TO RECEIVE A COVER OF CLEAN MULCH TO A DEPTH OF 75mm(3"). FOR GUYING AND STAKING TREES, REFER TO PLANTING DETAILS. WRAP ALL DECIDUOUS TREES UNDER EXPERIENCED SUPERVISION ONLY TO THE SPECIFICATIONS OF THE ONTARIO LANDSCAPE CONTRACTORS ASSOCIATION.

PLANT MATERIAL SIZES AND CONDITIONS ARE TO BE AS INDICATED ON THE LANDSCAPE DRAWING.

THE INDIVIDUAL PLANT GROUPING TOTAL AS ILLUSTRATED ON THE PLANTING PLAN SUPERSEDES THE ESTIMATED QUANTITY ON THE MASTER PLANT LIST. CONTRACTOR MUST REPORT ANY DISCREPANCIES TO THE LANDSCAPE ARCHITECT IN WRITING BEFORE COMMENCING ANY WORK. CONTRACTOR WILL ASSUME FULL RESPONSIBILITY IF LANDSCAPE ARCHITECT IS NOT NOTIFIED OF DISCREPANCIES.

* MULCH - SHREDDED PINE MULCH BY "GRO BARK" OR APPROVED EQUAL. LANDSCAPE ARCHITECT TO APPROVE MULCH BEFORE INSTALLATION.

GENERAL MAINTENANCE

PROPER MAINTENANCE PROCEDURES ARE TO BE FULLY ADMINISTERED FOR ALL NEWLY CONSTRUCTED LANDSCAPE WORK IN ACCORDANCE WITH LANDSCAPE ONTARIO SPECIFICATIONS (SECTION 1E - MAINTENANCE WORK). THIS SHALL APPLY ONLY DURING THE CONSTRUCTION PERIOD, UNLESS OTHERWISE SPECIFIED. CONTRACTOR IS RESPONSIBLE FOR MAINTENANCE OF SOD AND PLANTING UNTIL FINAL ACCEPTANCE BY LANDSCAPE ARCHITECT.

RODENT PROTECTION

THE CONTRACTOR SHALL BE RESPONSIBLE FOR THE PROTECTION OF ALL TREES AND SHRUBS FOR WINTER PROTECTION AND FROM RODENT INJURY FOR THE DURATION OF GUARANTY PERIOD. PROTECTIVE GUARDS SHALL BE EMPLOYED AROUND ALL DECIDUOUS TREES. GUARDS TO BE 150MM DIA. PVC PIPE OR AS MUNICIPAL GUIDELINES. GUARDS SHALL BE INSTALLED PRIOR TO THE APPLICATION OF THE MULCH AND SHOULD BE PLACED A MINIMUM OF 50MM (2") OUT FROM THE TREE TRUNK ON ALL SIDES.

ALL SHRUBS AND CONIFEROUS TREES SHALL HAVE AN APPLICATION OF "SKOOT" OR APPROVED EQUIVALENT RODENT FORMULA, TO BE APPLIED AT THE END OF OCTOBER. FOLLOW MANUFACTURER'S DIRECTIONS FOR APPLICATION.

GENERAL REQUIREMENTS

USE ABOVE SPECIFICATIONS IN CONJUNCTION WITH THE GENERAL LANDSCAPE SPECIFICATIONS OF THE ONTARIO LANDSCAPE CONTRACTORS ASSOCIATION, THE NURSERY SOD GROWERS ASSOCIATION OF ONTARIO AND WITH THE GUIDE SPECIFICATIONS FOR NURSERY STOCK OF THE CANADIAN NURSERY TRADES ASSOCIATION. USE ONLY PLANT MATERIAL TRUE TO NAME, SIZE AND GRADE AS SPECIFIED ON PLANTING PLAN; PROVIDE SUFFICIENT LABELS OR MARKINGS TO INDICATE CLEARLY THE VARIETY, SIZE AND GRADE OF EACH SPECIMEN OR BUNDLE.

OBTAIN APPROVAL FOR SUBSTITUTIONS AS TO VARIETY, SIZE OR GRADE FROM THE LANDSCAPE ARCHITECT. USE ONLY NURSERY STOCK GROWN UNDER PROPER HORTICULTURAL PRACTICES, VIABLE, FREE FROM PEST AND DISEASE AND UNDAMAGED. CHECK LOCATIONS AND OBTAIN STAKEOUTS OF ALL UTILITY LINES BEFORE EXCAVATION. OBTAIN ALL NECESSARY PERMITS BEFORE COMMENCEMENT OF CONSTRUCTION. REPORT IN WRITING ANY DISCREPANCIES IN THE DRAWINGS, SPECIFICATIONS AND CONTRACT DOCUMENTS TO THE LANDSCAPE ARCHITECT BEFORE THE END OF THE BIDDING PROCESS AND COMMENCEMENT OF CONSTRUCTION. THESE SPECIFICATIONS MAY BE SUPERCEDED BY ADDITIONAL SPECIFICATIONS SET OUT IN THE TENDER DOCUMENTS. CONTRACTOR TO REVIEW ALL DOCUMENTS.

GUARANTEE PERIOD

PROVIDE ONE FULL YEAR GUARANTEE FOR ALL LANDSCAPE WORK FROM DATE OF FINAL ACCEPTANCE BY LANDSCAPE ARCHITECT. GUARANTEE PERIOD MAY BE EXTENDED TO TWO FULL YEARS DEPENDING ON MUNICIPAL STANDARDS. CONTRACTOR TO VERIFY WITH OWNER AND LANDSCAPE ARCHITECT.

PLANT MATERIAL INSTALLATION

SCALE: N.T.S. DATE: LD01

REFER TO PLAN FOR LOCATION

STANDARD SHRUB PLANTING DETAIL

WINTER PROTECTION: Shrubs to be wrapped with burlap or approved equal during guarantee period.

PRUNING: (To soil species) Prune to remove damaged or objectionable branches following proper horticultural practice. DO NOT PRUNE LEADERS.

GUYING: As directed; appropriate to species and size of shrub

MULCHING: 102 (4") shredded bark mulch be "All Treat" or equal. Provide 102 (4") saucer.

CUT AND REMOVE: burlap from top 1/2 of ball as shown. (B.B. as per plant list)

FERTILIZER: Two (2) 21 gram Agriform tablets or approved equivalent for each shrub in bed.

PLANTING SOIL MIXTURE: (Mix thoroughly)
A. For ideal situations mix:
• 6 parts good quality topsoil
• 2 parts well rotted cow manure
• 1 part peat moss
B. For clay or wet situations:
• Contact consultants for proper soil mixture, before proceeding with work
C. Add 0.58 kg (1 lb) of bonemeal per cubic yard of soil
D. Soil mixture should be firmly compacted to eliminate air pockets and prevent settlement.

PREPARATION OF BED: Excavate shrub bed to size outlined on drawings, minimum 457 (18") depth. Remove any subsoil or rubbish off site unless otherwise directed.

SPACING: As directed.

FOR RODENT CONTROL: See landscape specifications or apply "Skoot" at the end of October. Note: All tree stakes, ties and guards are to be removed one year after installation by the landscape contractor.

STANDARD SHRUB PLANTING DETAIL

SCALE: N.T.S. DATE: LD01

REFER TO PLAN FOR LOCATION

STANDARD DECIDUOUS TREE DETAIL

PRUNING: By 1/2 to remove damaged or objectionable branches following proper horticultural practice. DO NOT PRUNE LEADERS.

WRAPPING: Approved tree wrap from top of ball to 305 (12") above first branch. Secure with binder twine, wound opposite to wrapping. Secure top, middle and bottom.

GUYING: 1 wo 51 x 51 x 6 (2" x 2" x 1/2") steel T-bars, minimum 2.438 (8'-0") long, and drilled to receive #10 wire threaded through 13 (1/2") Ø rubber hose to support tree. Paint "T" flat black.

WIRE MESH TREE GUARD: For rodent protection

CUT AND REMOVE: burlap from top 1/2 of ball.

MULCHING: 102 (4") shredded bark mulch by "All Treat" or equal.

FERTILIZER: Two (2) 21 gram Agriform tablets for each 25 (1") of trunk diameter (or approved method by Landscape Architect).

GRADES: Maintain original grade of tree base after planting, or slightly higher to suit site conditions.

SLOPES: Build up earth saucer on downhill side. Earth saucer to be compacted.

SCARIFY: edges to allow for root penetration

UNDISTURBED SOIL

PLANTING SOIL MIXTURE: (Mix thoroughly)
A. For ideal situations mix:
• 6 parts good quality topsoil
• 2 parts well rotted cow manure
• 1 part peat moss
B. For clay or wet situations:
• Contact consultants for proper soil mixture, before proceeding with work.
C. Add 0.58 kg (1 lb) of bonemeal per cubic yard of soil
D. Soil mixture should be firmly compacted to eliminate air pockets and prevent settlement.

NOTE: All tree stakes, ties, wraps and guards are to be removed one year after installation by the landscape contractor.

ALL GIVEN DIMENSIONS ARE IN METRIC

WIRE BASKETS OR STRING ON ROOT BALL - CUT AND TOP REMOVE 1/2

STANDARD DECIDUOUS TREE DETAIL

SCALE: N.T.S. DATE: LD01

REFER TO PLAN FOR LOCATION

STANDARD CONIFEROUS TREE DETAIL

PLANTING SOIL MIXTURE: (Mix thoroughly)
A. For ideal situations mix:
• 6 parts good quality topsoil
• 2 parts well rotted cow manure
• 1 part peat moss
B. For clay or wet situations:
• Contact consultants for proper soil mixture, before proceeding with work
C. Add 0.58 kg (1 lb) of bonemeal per cubic yard of soil
D. Soil mixture should be firmly compacted to eliminate air pockets and prevent settlement.

STAKING: Secure three (3) stakes to main tree trunk with approved short hemp rope. Ensure the stakes are not in contact with the bark. Secure into ground with a minimum depth of 350 (1'-6").

MULCHING: Provide 102 (4") shredded bark mulch forming a saucer around base of tree. Maintain the original grade or slightly higher.

CUT AND REMOVE: burlap from top 1/2 of ball.

FERTILIZER: Two (2) 21 gram Agriform tablets for each 25 (1") of trunk diameter (or approved method by Landscape Architect).

GRADES: Maintain original grade of tree base after planting, or slightly higher to suit site conditions.

SCARIFY: edges to allow for root penetration

UNDISTURBED SOIL

ALL GIVEN DIMENSIONS ARE IN METRIC

WIRE BASKETS OR STRING ON ROOT BALL - CUT AND TOP REMOVE 1/2

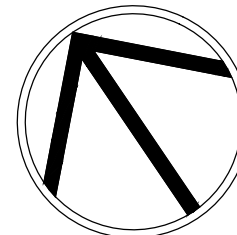
NOTE: All tree stakes, ties, wraps and guards are to be removed one year after installation by the landscape contractor.

STANDARD CONIFEROUS TREE DETAIL

SCALE: N.T.S. DATE: LD01

01	Issued for Review	08/21/19
No.	Revision	Date

North:



Stamp:



Project:

Proposed Landscape and Site Upgrades
261 Essa Road
Barrie, Ontario

Scale: **As Shown** Date: **Aug 2019**

Drawn By: **S.P.** Checked By: **L.M.**

Drawing Title:

Landscape Details

Project No.

19154

Sheet No.

LD-01