

The position of existing above ground and underground utilities and facilities are not necessarily shown on the drawings, and where shown, the accuracy of the position of such utilities and facilities is not guaranteed. Before starting work, the contractor shall confirm the exact location of all existing utilities and facilities, and shall assume all liability for damage to them.

Drawings shall not be used for construction unless sealed and signed. All work to be performed in accordance with the Occupational Health & Safety Act 1990.

Any errors and/or omissions shall be reported to Pinestone Engineering Ltd. without delay.



KEY MAP
LEGAL
PLAN OF SURVEY OF PART OF DUNLOP STREET REGISTERED PLAN 2 AND PART OF WATER LOTS 25 TO 30 (INCLUSIVE) AND PART OF THE WATER LOT IN FRONT OF POYNTZ STREET CITY OF BARRIE COUNTY OF SIMCOE


NOTES

1. TOPOGRAPHIC SURVEY AND LEGAL INFORMATION PROVIDED BY RUDY MAK SURVEYING LTD NOV 21, 2017.
2. SITE PLAN PROVIDED BY IAN S. MALCOM ARCHITECTS.
3. STOCKPILES LEFT IN PLACE FOR MORE THAN 30 DAYS ARE TO BE STABILIZED BY MULCHING, VEGETATION COVER, OR TARPS.
4. ALL DISTURBED AREAS THAT HAVE BEEN STRIPPED OF TOPSOIL SHALL BE STABILIZED BY SEEDING, SOODING, MULCHING, OR OTHER ACCEPTABLE CONTROL MEASURES. THE PERIOD OF INACTIVITY SHALL NOT EXCEED 30 DAYS UNLESS OTHERWISE PERMITTED BY THE DIRECTOR OF ENVIRONMENTAL SERVICES.
5. SEED MIX TO BE SIMCOE COUNTY UPLAND.


BENCHMARK
ELEVATIONS ARE GEODETIC AND ARE REFERRED TO VCM 00119673109 HAVING AN ELEVATION OF 220.21.

NO.	YY/MM/DD	REVISION	BY
3	19.10.17	REVISED PER CITY COMMENTS	J.L.
2	19.06.13	REVISED PER LSRC COMMENTS	J.L.
1	19.05.30	REVISED PER CITY COMMENTS	J.L.

SEAL



NORTH ARROW



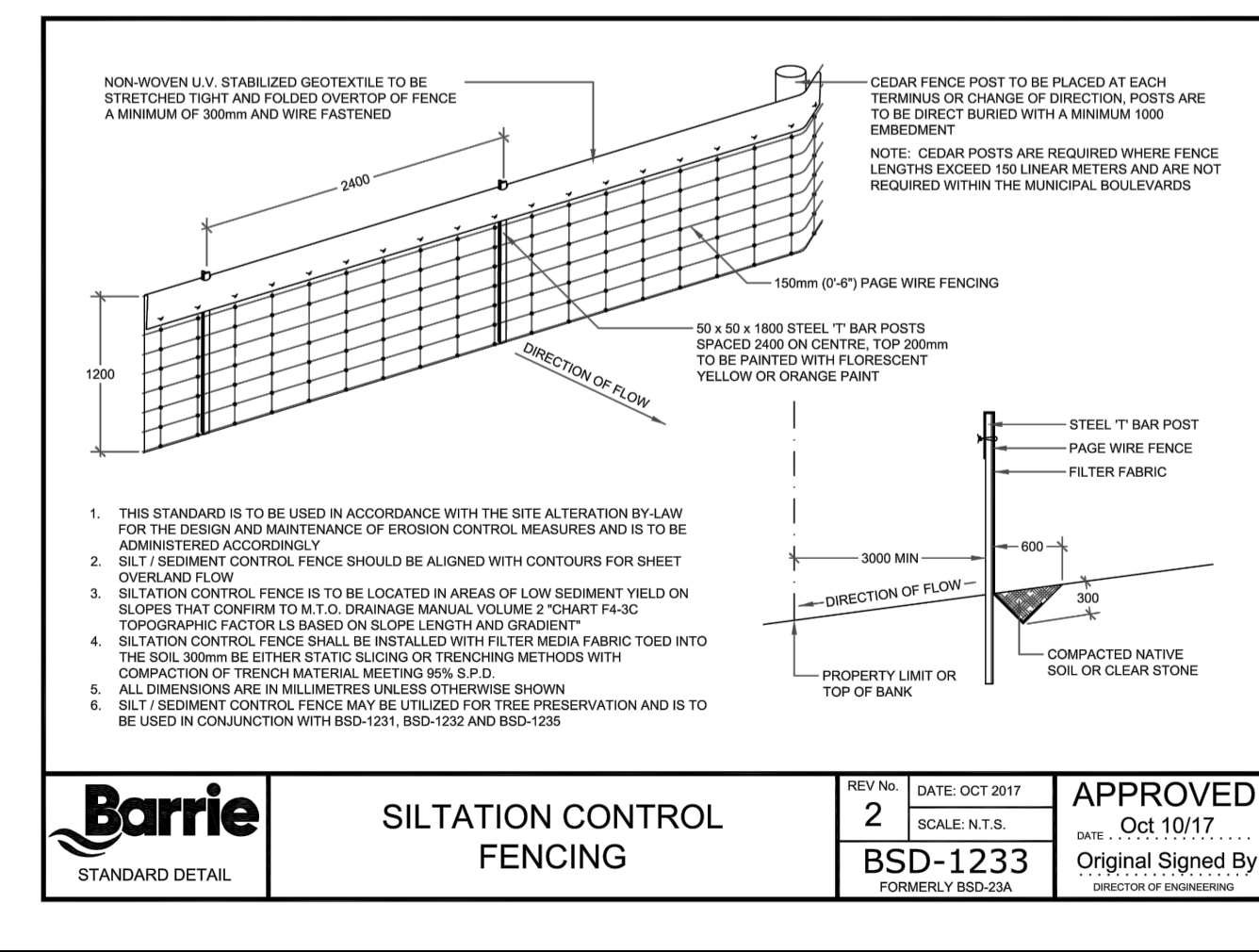
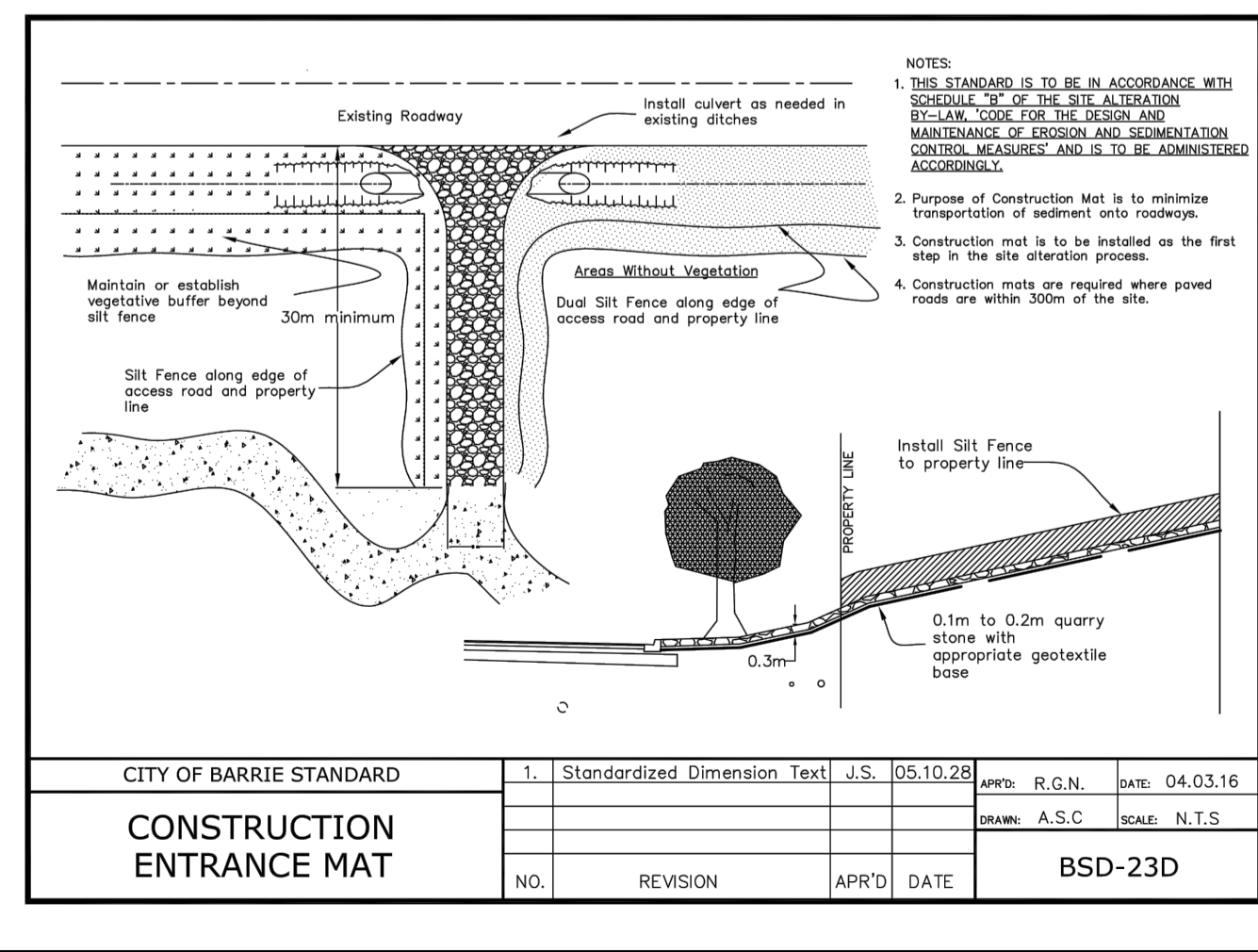
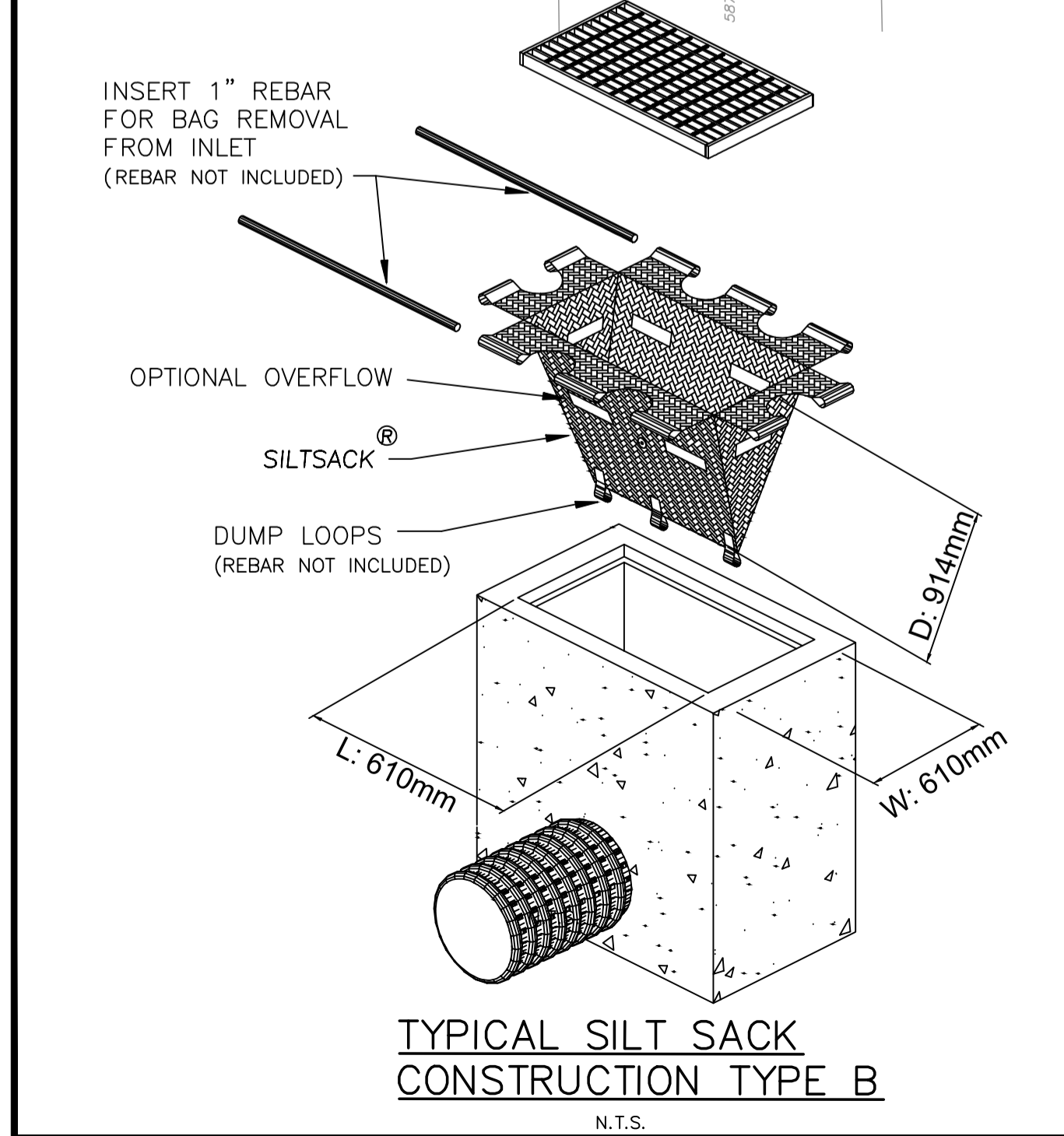
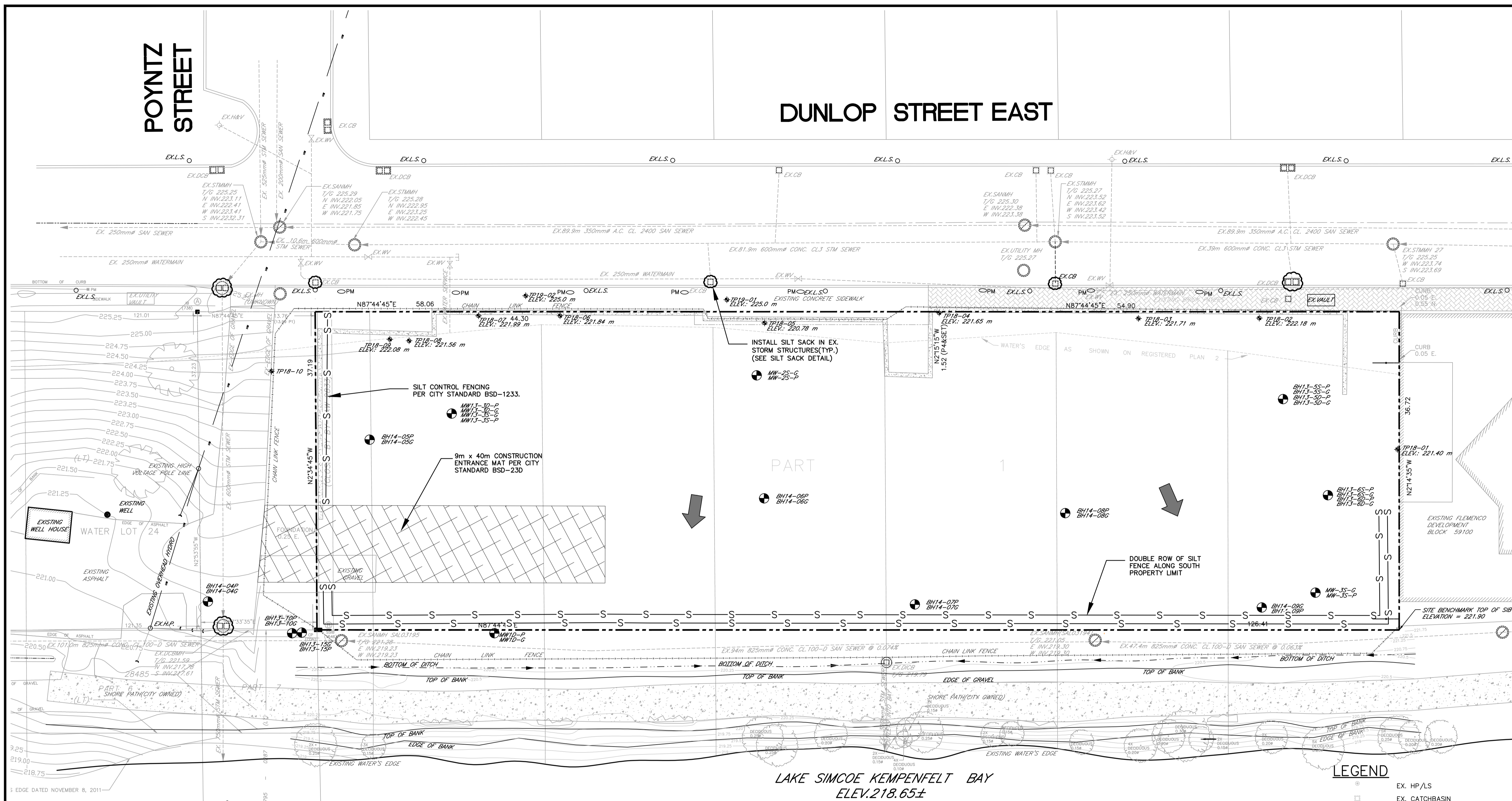
DESIGN BY:	J.V.
DRAWN BY:	J.L.
CHECKED:	J.V.
DATE:	OCT. 2019
SCALE:	1:250

PROJECT
185 DUNLOP STREET WATERFRONT CONDO DEVELOPMENT

DRAWING TITLE
EROSION AND SEDIMENT CONTROL PLAN

PROJECT NO.	DRAWING NO.	REVISION
17-11338	ESC-1	3

DWG NAME



EROSION CONTROL NOTES:

1. All silt fencing to be installed prior to any grading or excavation.
2. Erosion control fencing to be installed around the base of all stockpiles.
3. Additional erosion control measures may be required as site development progresses. Contractor to provide all additional erosion control structures as directed by the engineer.
4. Pinestone Engineering Ltd. to monitor erosion control structures to ensure fencing is installed and maintenance is performed to municipal requirements.
5. Erosion control structures to be monitored regularly and after every rainfall. Any damage repaired immediately. Sediments to be removed when accumulations reach a maximum of 1/2 the height of the fence.
6. All erosion control structures to remain in place until all disturbed ground have been re-stabilized either by paving or restoration of vegetative ground cover.
7. No alternate methods of erosion protection shall be permitted unless approved Pinestone Engineering Ltd. and the municipal department of public works.
8. Install mud mat prior to any grading works onsite.
9. Contractor is responsible for municipal roadway to be cleared of all sediments from vehicular tracking etc. at the end of each day.