



PINESTONE ENGINEERING LIMITED | www.pel.ca

The position of existing above ground and underground utilities and facilities are not necessarily shown on the drawings, and where shown, the accuracy of the position of such utilities and facilities is not guaranteed. Before starting work, the contractor shall confirm the exact location of all existing utilities and facilities, and shall assume all liability for damage to them.
 Drawings shall not be used for construction unless sealed and signed. All work to be performed in accordance with the Occupational Health & Safety Act 1990.
 Any errors and/or omissions shall be reported to Pinestone Engineering Ltd. without delay.



KEY MAP LEGAL
 PLAN OF SURVEY OF PART OF DUNLOP STREET REGISTERED PLAN 2 AND PART OF WATER LOTS 25 TO 30 (INCLUSIVE) AND PART OF THE WATER LOT IN FRONT OF POINTS STREET CITY OF BARRIE COUNTY OF SIMCOE

NOTES
 1. TOPOGRAPHIC SURVEY AND LEGAL INFORMATION PROVIDED BY RUDY MAK SURVEYING LTD NOV 21, 2017.
 2. SITE PLAN PROVIDED BY IAN S. MALCOM ARCHITECTS.
 3. PARKING GARAGE GRADES BY OTHERS.

BENCHMARK
 ELEVATIONS ARE GEODETIC AND ARE REFERRED TO VCM 00119673109 HAVING AN ELEVATION OF 220.21.

NO.	YY.MM.DD	REVISION	BY
3	19.10.17	REVISED PER CITY COMMENTS	J.L.
2	19.06.13	REVISED PER LSRCA COMMENTS	J.L.
1	19.05.30	REVISED PER CITY COMMENTS	J.L.

SEAL: [Professional Engineer Seal: J.H. VOISIN 100172769, 02/25/19, PROVINCE OF ONTARIO]

NORTH ARROW: [North Arrow pointing up]

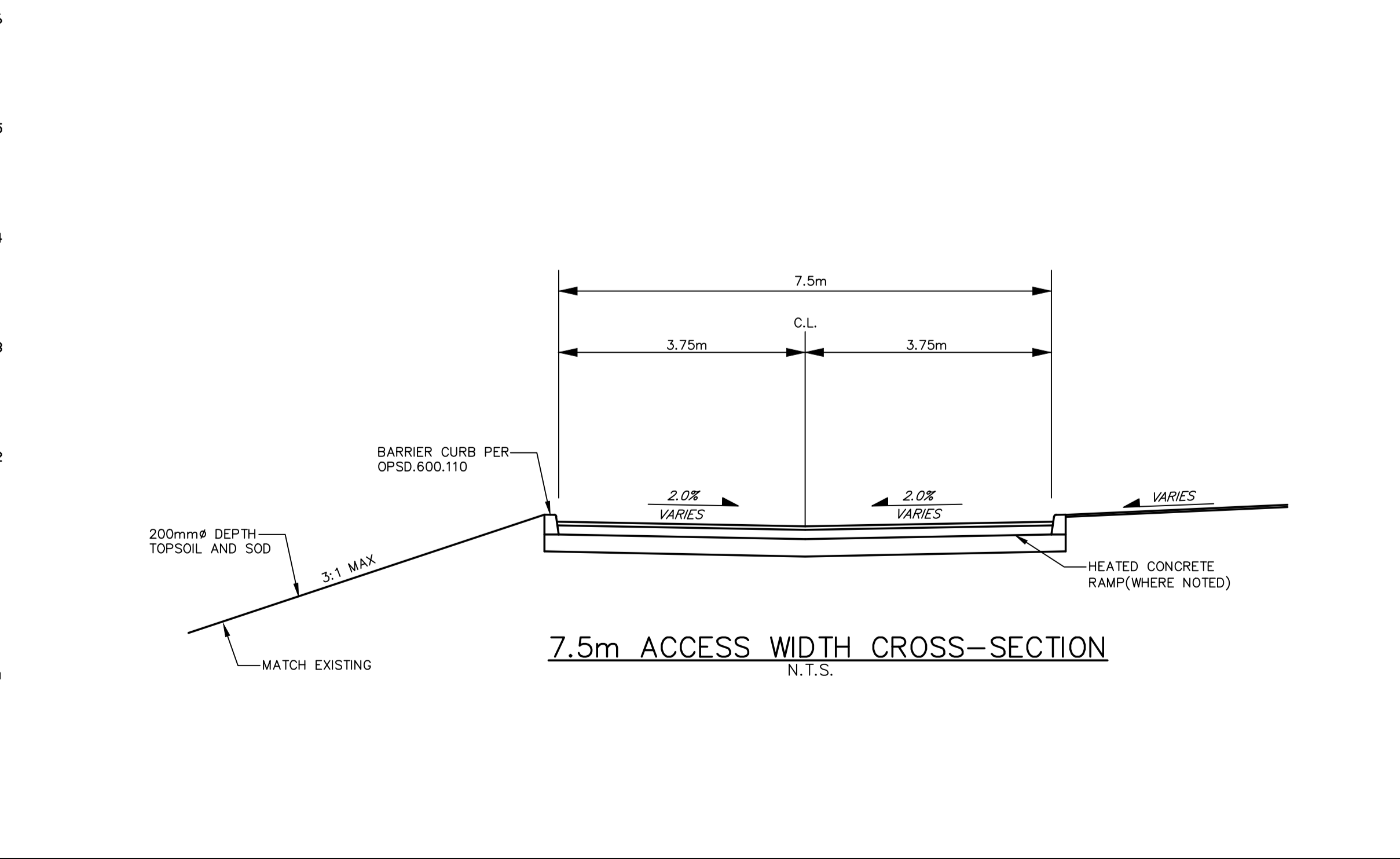
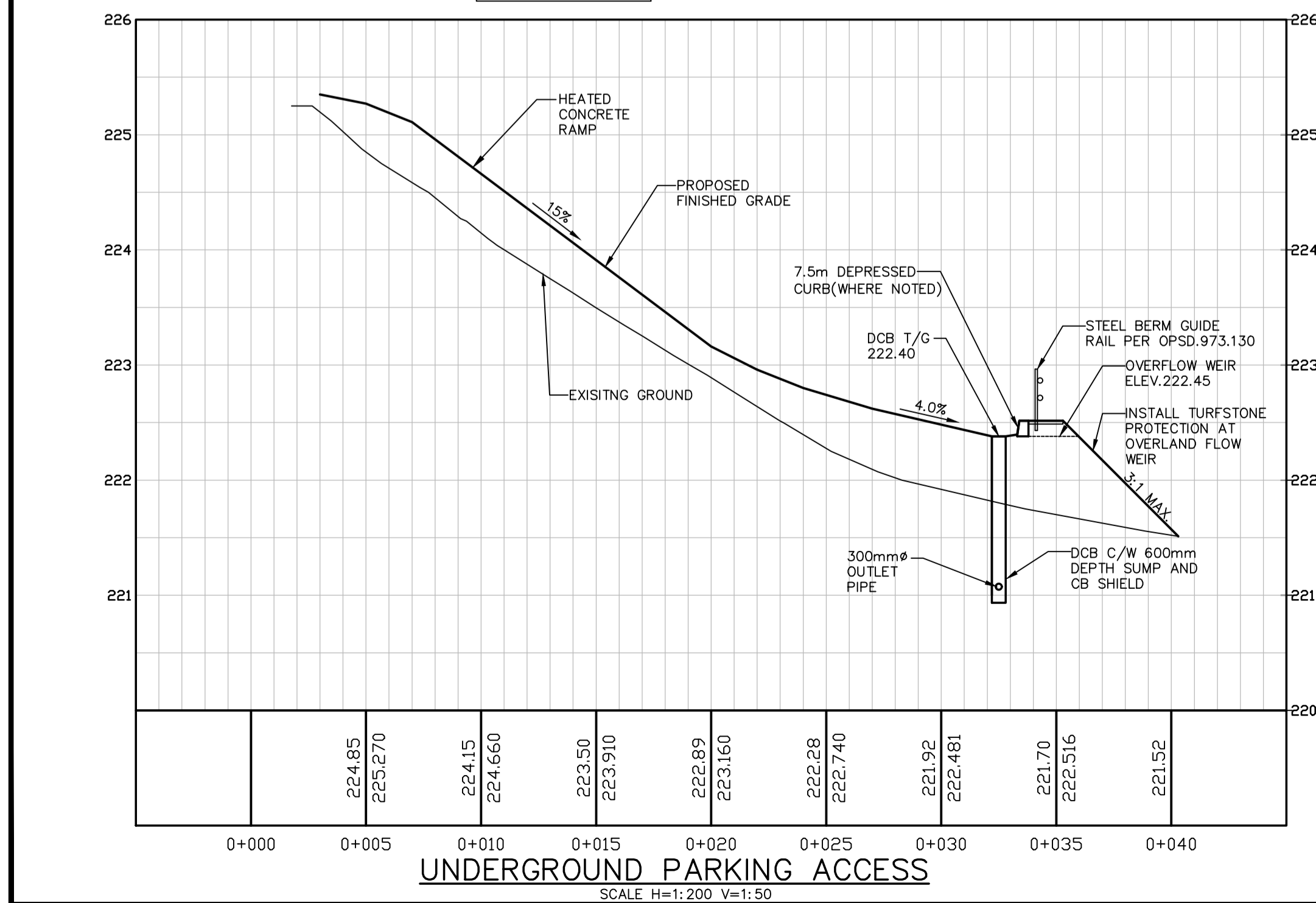
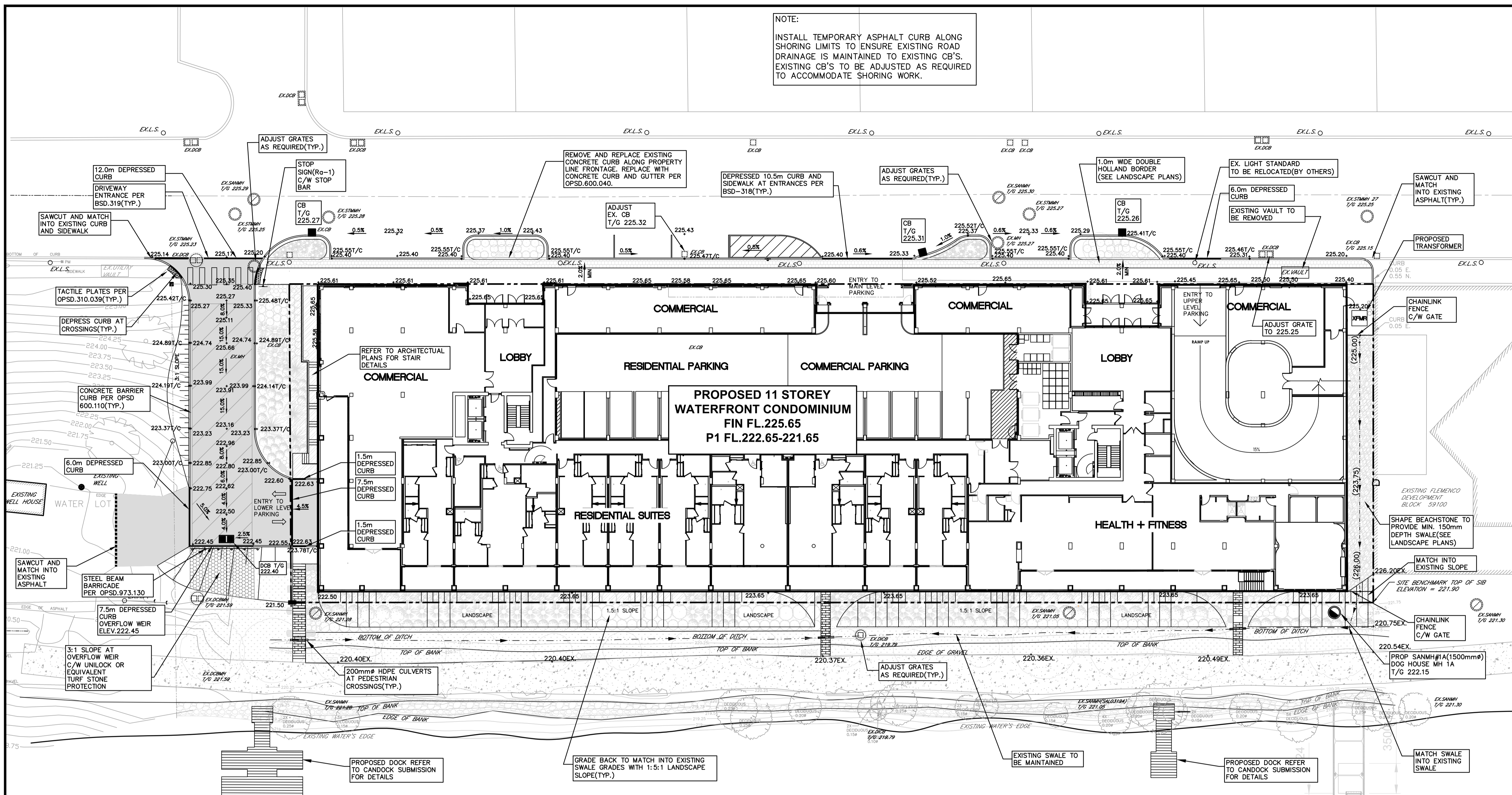
DESIGN BY:	J.V.
DRAWN BY:	J.L.
CHECKED:	J.V.
DATE:	OCT. 2019
SCALE:	1:250

PROJECT
 185 DUNLOP STREET WATERFRONT CONDO DEVELOPMENT

DRAWING TITLE
 GRADING PLAN

PROJECT NO. 17-11338 | **DRAWING NO.** GP-1 | **REVISION** 3

NOTE:
 INSTALL TEMPORARY ASPHALT CURB ALONG SHORING LIMITS TO ENSURE EXISTING ROAD DRAINAGE IS MAINTAINED TO EXISTING CB'S. EXISTING CB'S TO BE ADJUSTED AS REQUIRED TO ACCOMMODATE SHORING WORK.



LEGEND

- TURF STONE PROTECTION
- HEATED CONCRETE RAMP
- PROPOSED HARD SURFACING
- PROPOSED CATCHBASIN
- PROPOSED STORM MANHOLE
- PROPOSED CATCHBASIN MANHOLE
- PROPOSED SANITARY MANHOLE/CLEANOUT
- PROPOSED SANITARY MANHOLE/CLEANOUT EX. SANITARY MANHOLE
- EX. CATCH BASIN
- EX. CATCH BASIN MANHOLE
- EXISTING HYDRANT
- EXISTING WATER VALVE
- PROPOSED ELEVATION
- EXISTING ELEVATION

SPECIFIED CONTROL POINTS (SCP): UTM ZONE 17, MAD 83 (ORIGINAL), COORDINATES TO URBAN ACCURACY PER SEC. 14 (2) OF O.REG. 216/10

POINT ID	NORTHING	EASTING
SCP 00119673109	4915700.133	604482.056
SCP 03120080027	4917932.874	602243.437
ORP A	4915952.845	604878.854
ORP B	4915958.372	605019.088

COORDINATES CANNOT, IN THEMSELVES, BE USED TO RE-ESTABLISH CORNERS OR BOUNDARIES SHOWN ON THE PLAN.