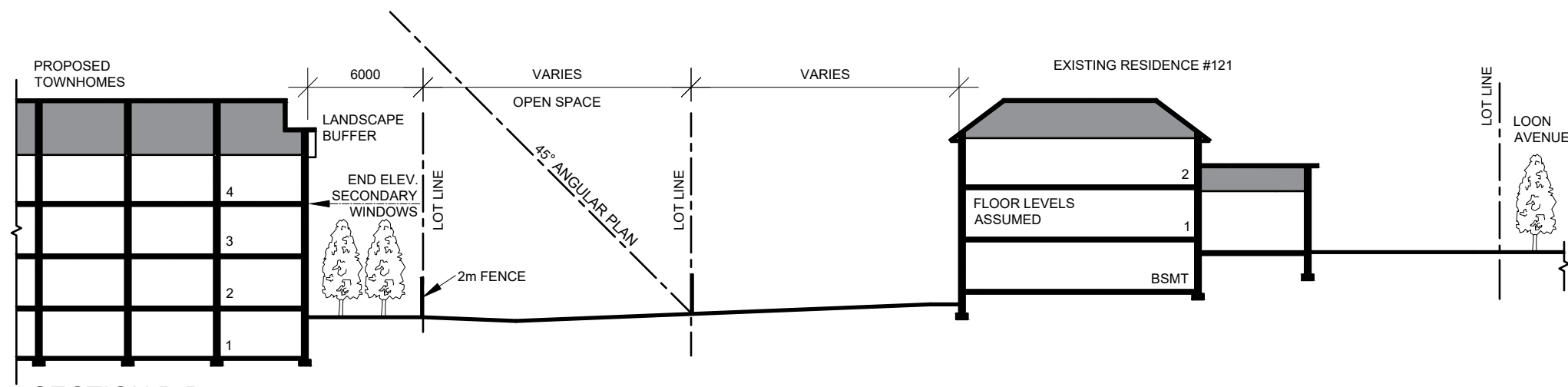
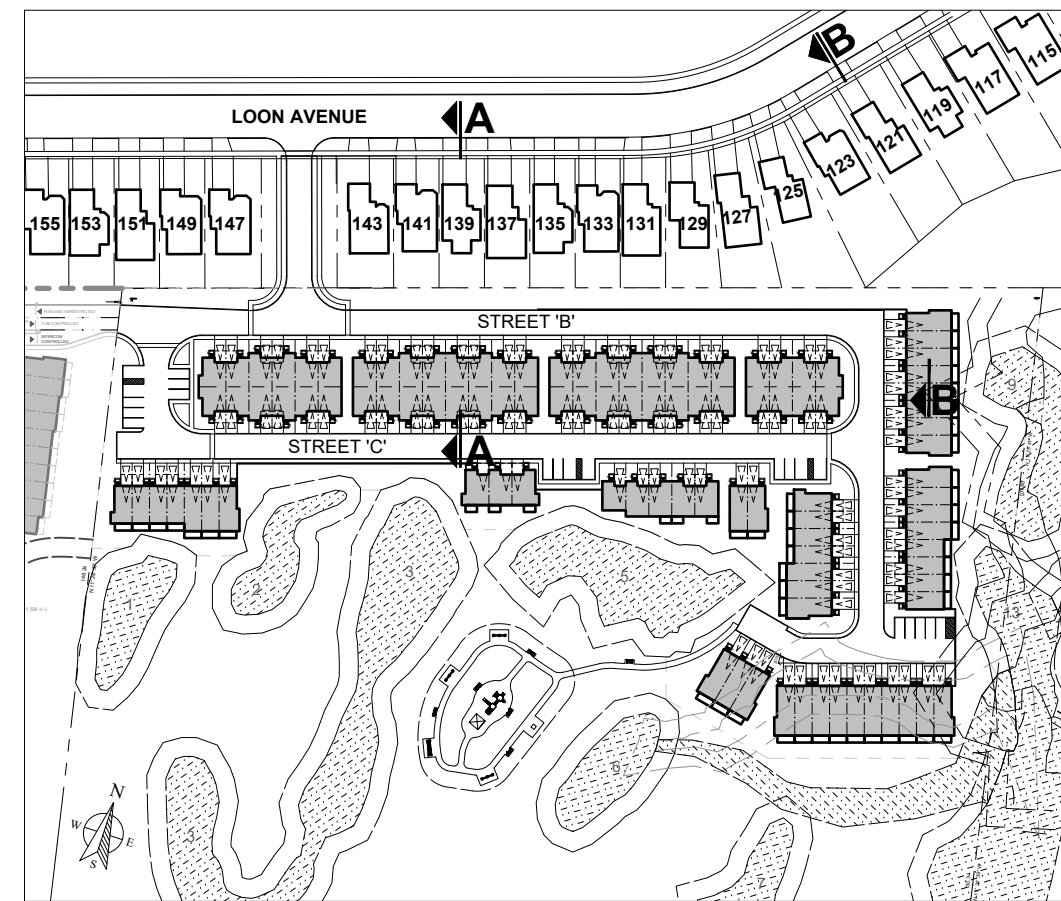


SECTION A-A



SECTION B-B



**SECTIONS
KEY PLAN**
1:20,000

Version 3.2
Loon Lands
Concept Site Plan - Sections

Client: LOON AVENUE LANDS OP INC.
Date: 01/10/22
Project Number: 3079 Scale: 1 : 250

WE MERCHANDISE SPACE INC.
FORREST GROUP INC.

The intent of this drawing is to provide a preliminary concept for this community, as an instrument of service. This drawing is provided by and is the property of We Merchandise Space Inc. and Forrest Group Inc. We Merchandise Space Inc. and Forrest Group Inc. retains ownership of copyright in all of its drawings. We Merchandise Space Inc. and Forrest Group Inc. are not responsible for the accuracy of underlying information, such as the survey. This drawing is not to be scaled. All Consultants and others must verify and accept responsibility for all dimensions and conditions on site and must notify We Merchandise Space Inc. and Forrest Group Inc. of any variations from the provided information. The Client named herein is granted a license to reproduce, distribute, exhibit or otherwise use, said materials, in accordance with this agreement, which license may be revoked for cause, including but not limited to, misuse of drawings or failure to pay accounts. It is expressly understood and agreed that no action, lawsuit, or claim may be made against the employees, officers, or directors of We Merchandise Space Inc. or Forrest Group Inc. for any reason whatsoever. For greater clarity, We Merchandise Space Inc. and Forrest Group Inc. shall not be liable, directly or indirectly, in any manner whatsoever by any party by reason of the use of the drawings and materials referred to herein.