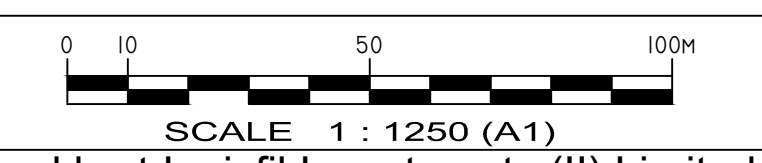
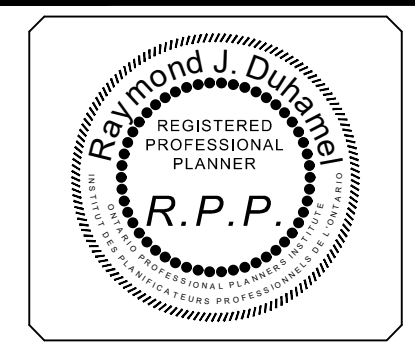


Pedestrian Circulation Plan
South Half Lot 13, Concession 11
(Geographic Township of Innisfil)
City of Barrie
2021

- Legend**
- Draft Plan Boundary ———
 - Single Sided Sidewalk ———
 - Double Sided Sidewalk ———
 - Conceptual Pathway System ———
 - Potential Transit System Route ———
 - Enhanced Window Streets ———
 - Potential Pathway Connections ★
 - Key Pedestrian Intersections ●



Lockhart Innisfil Investments (II) Limited
Pedestrian Circulation Plan



Date Issued: JUNE 2, 2021
Checked By: RD
Project No.: GOL-20538
Drawn By: m.c.r.
Drawing Name: GOL-20538-PH-2-PED-1.dwg



LOCKHART INNISFIL INVESTMENTS (II) LIMITED
BARRIE, ONTARIO

LOCKHART ROAD
TOWN OF INNISFIL

C:\TUG\Planning Drawings\2021\June 2021\21-06-02\GOL-20538\PH-2-PED-1.dwg Layout:PedPlan Plotted Jun 02, 2021 @ 10:38am by marichards The Jones Consulting Group Ltd.