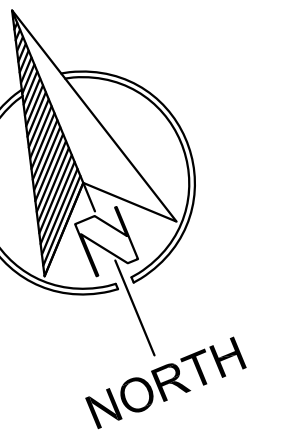
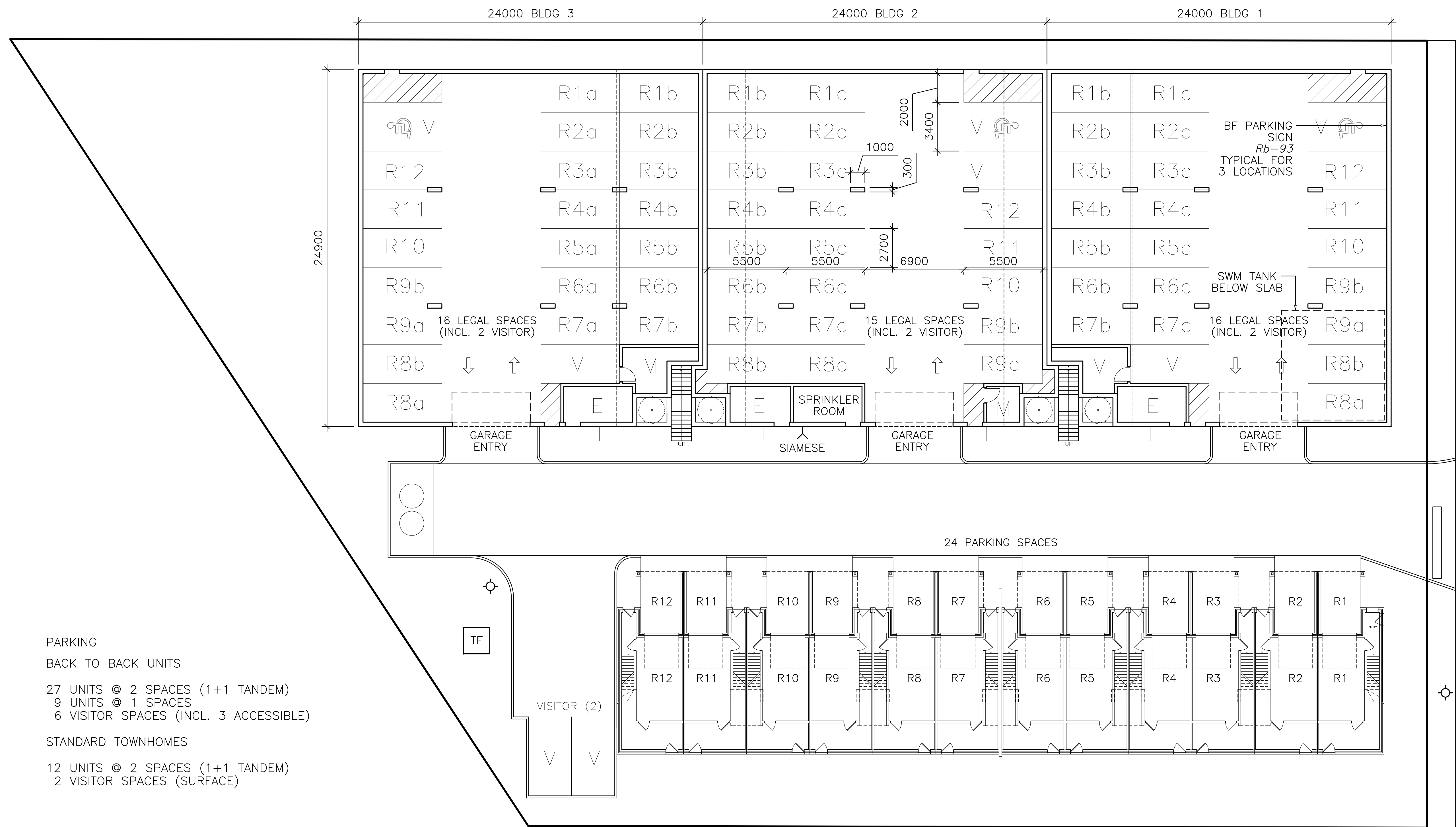


This drawing, specification, general arrangement and details are the copyright property of Patrick Markus Luckie Architect and shall be used only for the project stated on this drawing and shall be returned to the architect upon completion of the project. The contractor is responsible for the construction and verification of all dimensions contained herein and all measurements and conditions on site at any point in time. The contractor shall report any discrepancies to the consultant in writing prior to the commencement of any affected work.

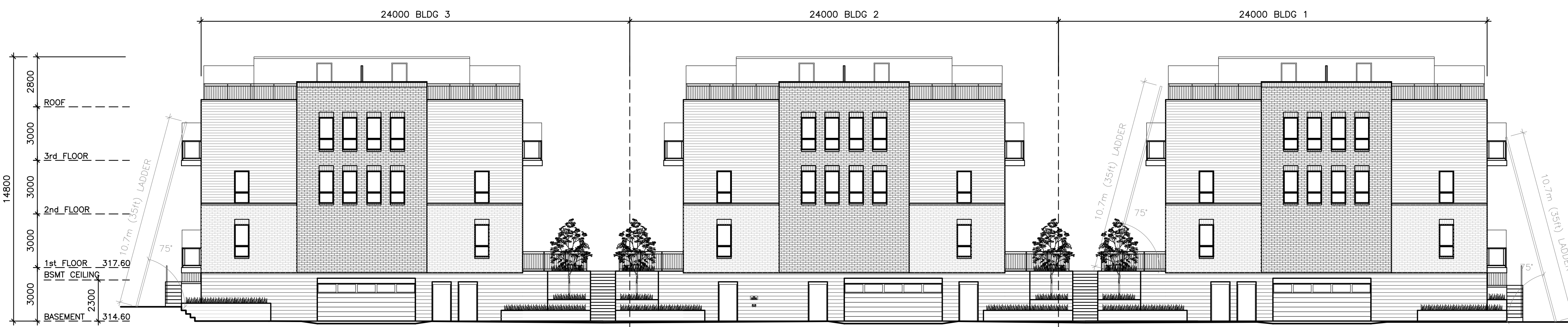


ESSA ROAD



PARKING  
BACK TO BACK UNITS  
27 UNITS @ 2 SPACES (1+1 TANDEM)  
9 UNITS @ 1 SPACES  
6 VISITOR SPACES (INCL. 3 ACCESSIBLE)  
STANDARD TOWNHOMES  
12 UNITS @ 2 SPACES (1+1 TANDEM)  
2 VISITOR SPACES (SURFACE)

1 PARKING PLAN  
A-0.1b SCALE: 1:150



2 FIRE ROUTE ELEVATION (CONCEPT ONLY)  
A-0.1b SCALE: 1:150

Revisions:	
Date	Particular
MAR.21.19	EXTEND BASEMENT PARKING
MAR.11.21	ADJUST 2 VISITOR SPACES FOR TURNAROUND

Issue:	
Date	Particular
FEB.26.18	ISSUED FOR REVIEW
OCT.30.18	ISSUED FOR SITE PLAN APPLICATION
JUN.10.19	RE-ISSUED FOR SITE PLAN APPLICATION



ESSA ROAD  
URBAN TOWNHOME CONDOMINIUMS  
521 ESSA ROAD, BARRIE  
PARKING PLAN  
PROJECT No.: 17-02