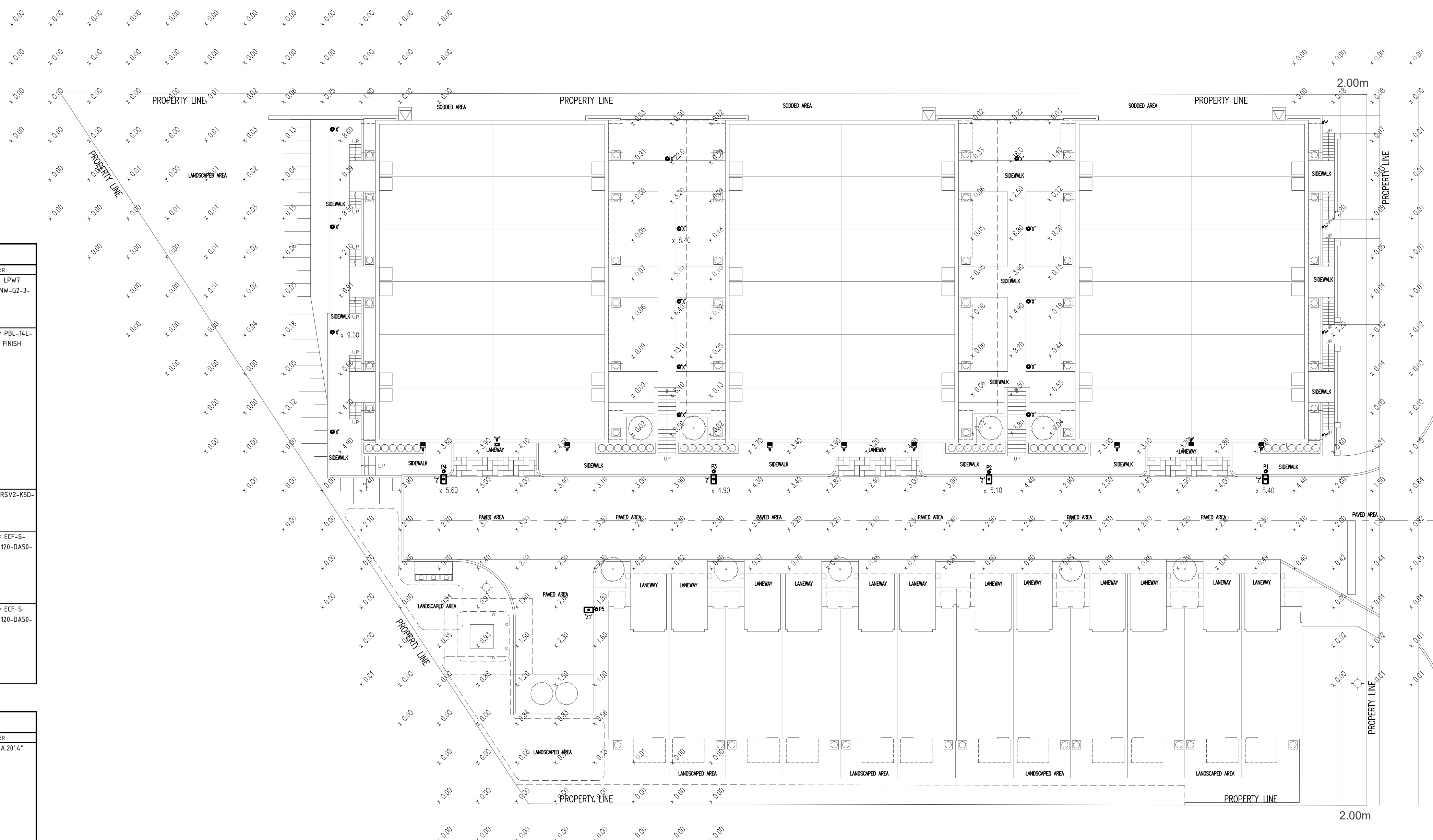


SITE LIGHTING FIXTURE SCHEDULE		
ID	DESCRIPTION	CATALOGUE NUMBER
'W'	LED BASED WALL MOUNTED ALUMINUM BODIED BRONZE FINISHED WALL SCONCE WITH TYPE II DISTRIBUTION RATED AT 4000K, 1153 LUMENS, 14W POWER WITH 120V DRIVER. MOUNTED AT 10FT ABOVE GRADE ON FLUSH MOUNTED OUTLET BOX. EXACT PLACEMENT ON EXTERIOR ELEVATION TO LATER DETAIL.	SIGNIFY STONCO CAT # LPW7-LYTEPRPBL-14L-450-NW-G2-3-120V-BZ FINISH
'X'	LED FLAT DISH TOP BOLLARD WITH DOUBLE ARM SUPPORT MOUNTED ON 4.5" DIA BRONZE FINISHED POST WITH TOTAL HEIGHT ABOVE CONCRETE BASE 42" TO TOP. FIXTURE SHALL BE CAST ALUMINUM WITH A 14 LED LIGHT SOURCE RATED AT 4000K, 1211 LUMENS, 10W POWER WITH 120V DRIVER. PROVIDE TYPE III DISTRIBUTION WITH THE SPLASH OF LIGHT AIMED AT SIDEWALK AREA. PROVIDE CONCRETE BASE WHICH SHALL BE 12" DIA WITH TOP OF BASE AT 4" ABOVE FINISHED GRADE AND EXTENDING 5FT BELOW GRADE IN UNDISTURBED SOIL OR ENGINEERED BACKFILL. PROVIDE RE-INFORCING STEEL REBAR CAGE FOR BASE. CHAMFER TOP OF CONCRETE BASE WITH 1" CHAMFER. EXTEND RIGID PVC RACEWAYS INTO BASE AT 20" BELOW FINISHED GRADE AND STUB UP IN CENTER OF POLE BASE PLATE EXTENDING 6" ABOVE TOP OF CONCRETE BASE. WHERE BOLLARDS ARE LOCATED IN PLANTERS BETWEEN BLOCKS 1 AND 2 AND BETWEEN BLOCKS 2 AND 3, BOLLARD SHALL BE MOUNTED ON CONCRETE PLINTH PROVIDED AS PART OF GARAGE CEILING SLAB WITH ANCHOR BOLTS AND WIRING RUN IN SLAB TO BE CO-ORDINATED ON SITE. SEE DETAILS ON SITE ELECTRICAL DRAWINGS.	SIGNIFY GARCO CAT # PBL-14L-450-NW-G2-3-120V-BZ FINISH
'Y'	FLUSH MOUNTED CAST ALUMINUM STEP LIGHT WITH BRONZE FINISHED LOUVERED WEATHERPROOF COVER WITH INTEGRAL 14W 4000K 1211 LUMEN LIGHT SOURCE AND 120V DRIVER. FLUSH MOUNTED INTO CONCRETE FACE WITH WIRING RUN CONCEALED IN CONCRETE	SIGNIFY HADCO CAT # RSV2-K50-G2
'Z'	POLE MOUNTED LED STREET LIGHTING FIXTURE WITH DIE CAST ALUMINUM WITH BRONZE POWDER COAT FINISHED WITH 2-3/8" DIA SLIP FITTER BRACKET. LENSE SHALL BE CLEAR POLYCARBONATE. LEADS SHALL BE 4000K WITH 5255 LUMENS WITH 120V DRIVER AND TYPE II DISTRIBUTION WITH REAR HOUSE SIDE SHIELD ALIGNED WITH CURB LINE. 120V 56W. PROVIDE DA-50 ALL NIGHT 50% DIMMING MODULE, ONE FIXTURE PER POLE. REFER TO POLE SCHEDULE FOR HEIGHT OF POLE.	SIGNIFY GARCO CAT # ECF-S-32L-530-NW-G2-2-HIS-120-DA50-TLRPC-F1-BZ FINISH
'Z1'	POLE MOUNTED LED STREET LIGHTING FIXTURE WITH DIE CAST ALUMINUM WITH BRONZE POWDER COAT FINISHED WITH 2-3/8" DIA SLIP FITTER BRACKET. LENSE SHALL BE CLEAR POLYCARBONATE. LEADS SHALL BE 4000K WITH 5348 LUMENS WITH 120V DRIVER AND TYPE III DISTRIBUTION WITH REAR HOUSE SIDE SHIELD ALIGNED WITH CURB LINE. 120V 56W. PROVIDE DA-50 ALL NIGHT 50% DIMMING MODULE, ONE FIXTURE PER POLE. REFER TO POLE SCHEDULE FOR HEIGHT OF POLE.	SIGNIFY GARCO CAT # ECF-S-32L-530-NW-G2-3-HIS-120-DA50-TLRPC-F1-BZ FINISH

POLE SCHEDULE		
ID	DESCRIPTION	CATALOGUE NUMBER
'P1', 'P2', 'P3', 'P4', and 'P5'	STRAIGHT 4" DIA ROUND ALUMINUM POLE 20FT TALL FINISHED IN BRONZE WITH MATCHING BASE CAP. POLE SHALL HAVE HANDHOLE AND 4" WEATHERPROOF CAP WITH ALL WIRING RUN CONCEALED IN POLE AND CORRESPONDING SINGLE LIGHT FIXTURE. PROVIDE PIG TAIL STYLE ANCHOR BOLTS IN CONCRETE BASE. PROVIDE CONCRETE BASE WHICH SHALL BE 16" DIA WITH TOP OF BASE AT 4" ABOVE FINISHED GRADE AND EXTENDING 5FT BELOW GRADE IN UNDISTURBED SOIL OR ENGINEERED BACKFILL. PROVIDE RE-INFORCING STEEL REBAR CAGE FOR BASE. CHAMFER TOP OF CONCRETE BASE WITH 1" CHAMFER. EXTEND RIGID PVC RACEWAYS INTO BASE AT 500 BELOW FINISHED GRADE AND STUB UP IN CENTER OF POLE BASE PLATE EXTENDING 6" ABOVE TOP OF CONCRETE BASE.	DYNAPOLE CAT # SRA20"4" BRONZE



SITE PLAN - PROPOSED SITE LIGHTING

SCALE: 1:200 METRIC (22x34)

DRAWING REFERENCE NOTES

1. ILLUMINATION POINT LEVELS CALCULATED IN FOOTCANDLES

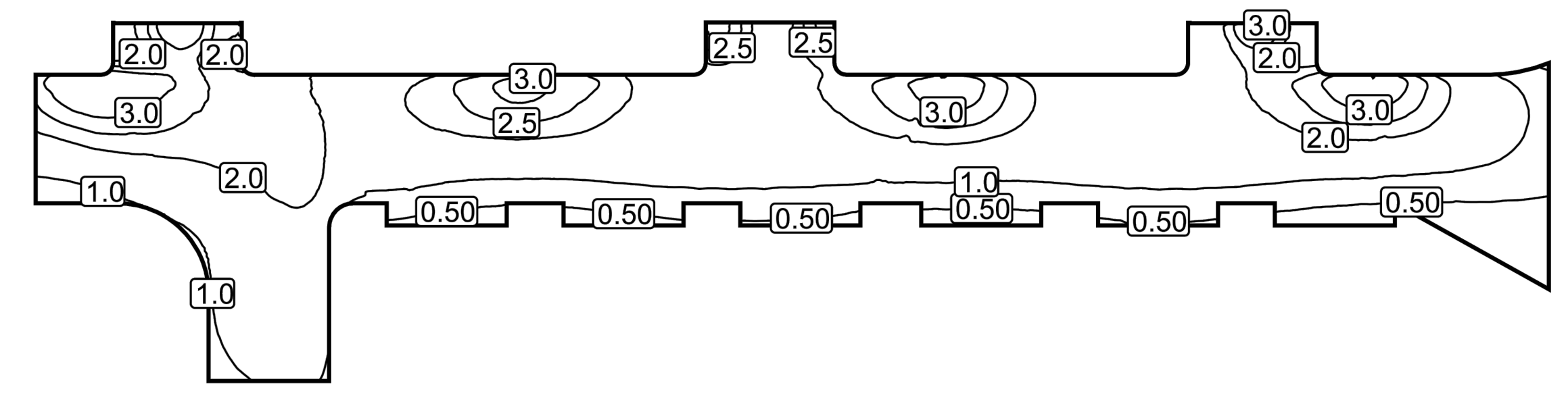
Light loss factor: 0.80

Surface result object 1: Luminance (Surface)

Light scene: Light scene 1

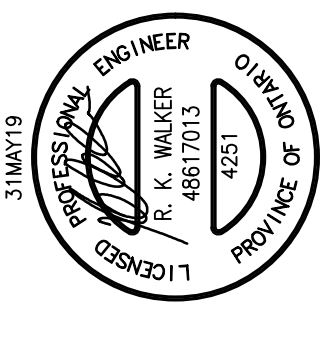
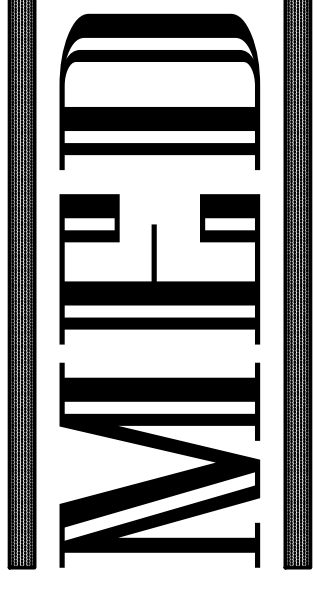
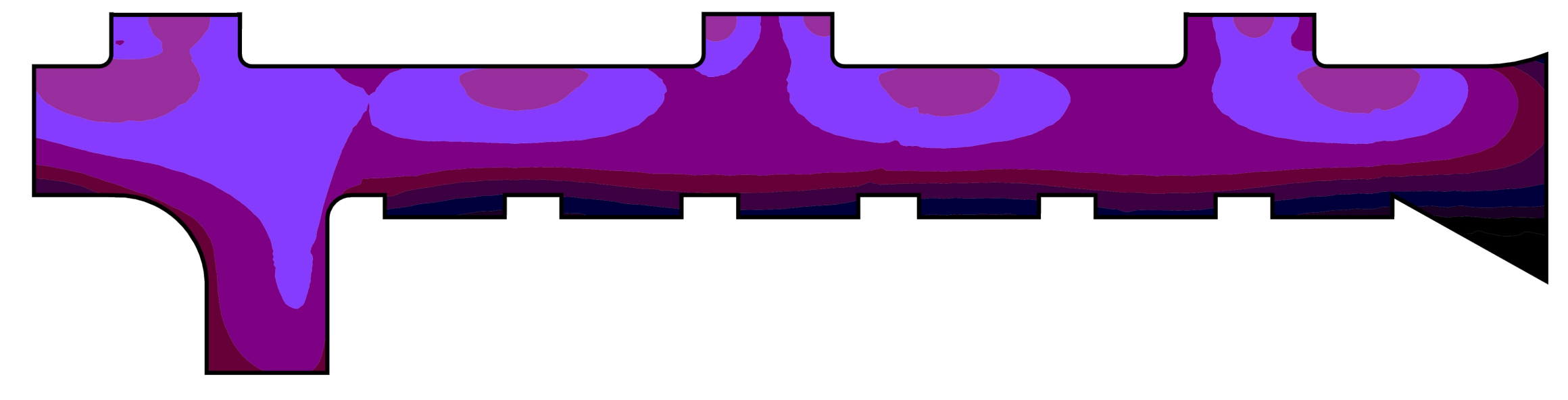
Average: 1.61 cd/m², Min: 0.028 cd/m², Max: 3.85 cd/m², Min/average: 0.017, Min/max: 0.007

Isolines [cd/m²]



ILLUMINATION LEVELS

False colors [cd/m²]



Project	521 525 ESSA ROAD BARRIE, ONTARIO
Drawing No.	SL.1
Scale	AS SHOWN
Date	31MAY19
Project Number	MED#4500
Drawn	MED
Approved	RW