

KEY PLAN

LEGEND

- EX. H&V ◊ EXISTING HYDRANT
- EXISTING STORM SEWER
- EXISTING SANITARY SEWER
- H&V ◊ PROPOSED HYDRANT AND VALVE
- V&B PROPOSED VALVE AND BOX
- PROPERTY LINE
- x 265.45EX EXISTING ELEVATION
- x 265.45 PROPOSED ELEVATION
- EMERGENCY OVERLAND FLOW
- LIMIT OF REGRADING
- STEP JOINT AS PER DETAIL ON SW-D2
- PROPOSED CBMH WITH SUBDRAIN AS PER SW-D
- PROPOSED STORM SEWER MH
- PROPOSED SANITARY SEWER MH
- PROPOSED CB/DCB WITH SUBDRAIN AS PER SW-D
- HEAVY DUTY ASPHALT
- PROPOSED SUBDRAIN
- ▨ PROPOSED PERMEABLE PAVERS
- ▨ PROPOSED BIOSWALE
- ▨ SEAMLESS ASPHALT REPAIR
- LIMIT OF SEAMLESS ASPHALT REPAIR
- LSRCA REGULATION LIMIT
- TOP OF STABLE SLOPE
- 6.0 m OFFSET LINE FROM TOP OF STABLE SLOPE

No.	REVISIONS/ISSUED	DATE	BY	CITY
5.	ISSUED FOR SPA #3	JAN. 28/21	GR	
4.	ISSUED FOR SPA #2	NOV. 19/20	GR	
3.	RE-ISSUED FOR SITE ALTERATION PERMIT	OCT. 30/20	GR	
2.	ISSUED FOR SITE ALTERATION PERMIT	OCT. 9/20	GR	
1.	ISSUED FOR SPA	JUNE 25/20	BJ	

**counterpoint** ENGINEERING  
 COUNTERPOINT ENGINEERING INC.  
 8395 Jane St., Suite 100, Vaughan, ON L4K 5Y2 Phone 905.326.1404 Fax 905.326.1405

**APPLICANT:**  
**JNC ARCHITECT INC.**  
 10 BUR OAK AVENUE, UNIT 3  
 MARKHAM, ON  
 L6C 0A2

**SITE LOCATION:**  
**PROPOSED INDUSTRIAL DEVELOPMENT**  
**CRUMB MANUFACTURING FACILITY**  
 571 WELHAM ROAD  
 BARRIE, ON  
 SITE PLAN FILE No.:

**LEGAL & TOPOGRAPHY**

PROVIDED BY: RUDY MAK SURVEYING LTD.  
 89 BIG BAY POINT RD. BARRIE, ON  
 705-722-3845

**BENCHMARK NOTE:**  
 SITE BENCHMARK IS THE TOP OF SPINDLE OF THE FIRE HYDRANT AT THE NORTH SIDE OF MAPLEVIEW DRIVE HAVING AN ELEVATION OF 264.77.

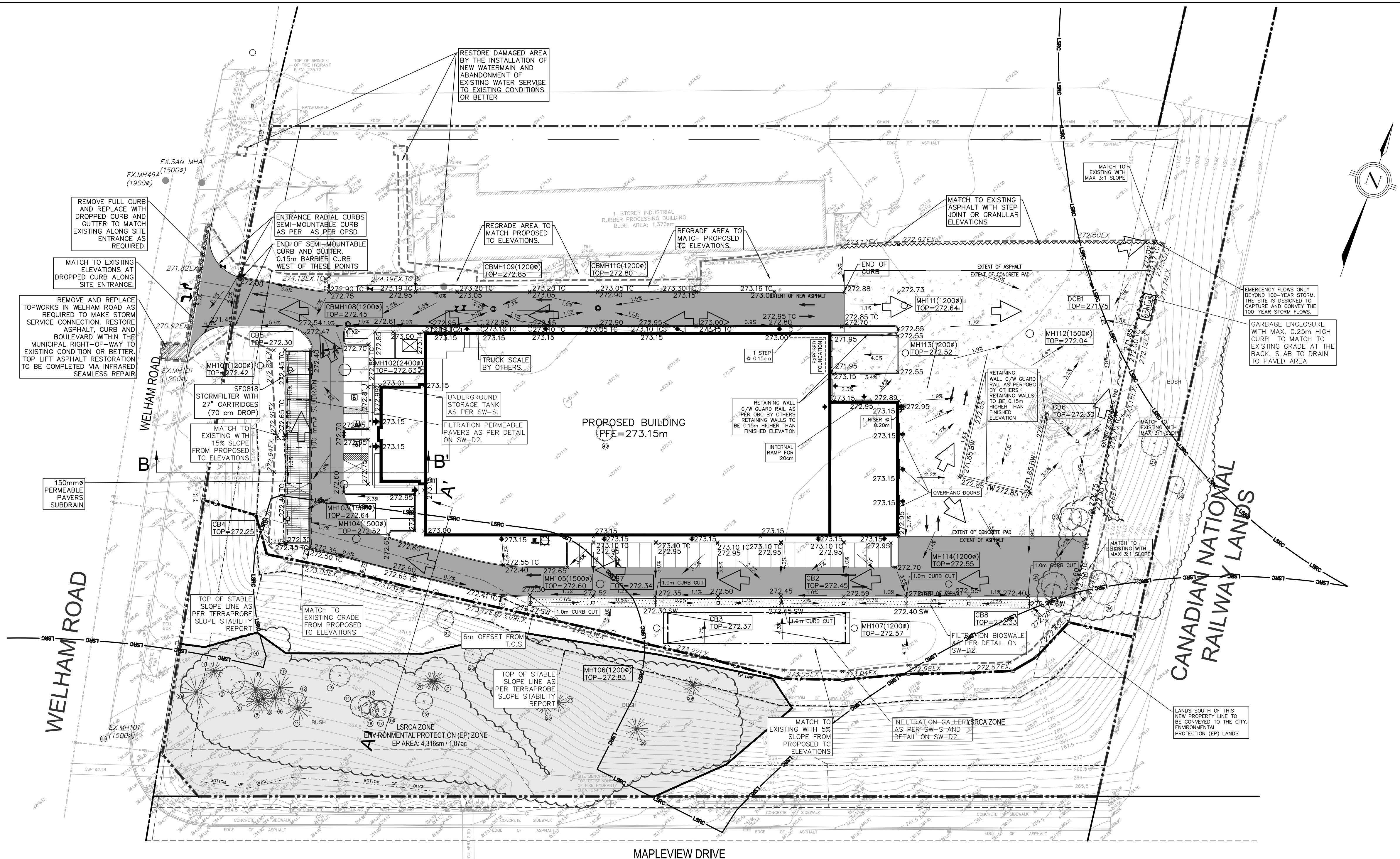
**DISTANCES**  
 DISTANCES ARE GROUND AND CAN BE CONVERTED TO GRID BY MULTIPLYING BY THE COMBINED SCALE FACTOR OF 0.999XXX.

**CONTROL MONUMENTS**  
 COMBINED 00119713848: THE HORIZONTAL MONUMENT IS LOCATED ON THE WEST SIDE OF HURONIA ROAD JUST SOUTH OF ELLIS DRIVE, APPROX. 350m SOUTH OF BIG BAY POINT ROAD. NOTE: A PROTECTIVE WATER VALVE COVER HAS BEEN PLACED OVER MONUMENT CAP. (ELEVATION=261.68, NORTHING 4911611.018 METRES, EASTING 606450.422 METRES).  
 HORIZONTAL 03120040012: THE HORIZONTAL MONUMENT IS LOCATED ON THE NORTH SIDE OF SAUNDERS ROAD AT TOP OF BANK AND SOUTH SIDE OF DITCH, OPPOSITE THE DRIVEWAY TO #231 SAUNDERS ROAD AND APPROXIMATELY 0.5 KM EAST OF BAYVIEW DRIVE. NOTE: A PROTECTIVE WATER VALVE COVER HAS BEEN PLACED OVER MONUMENT CAP. (NORTHING 4909810.870 METRES, EASTING 605984.432 METRES).  
 VERTICAL 03120030030: BARRIE MOLSON CENTRE - 555 BAYVIEW DR. THE VERTICAL CONTROL MONUMENT IS SET FLUSH IN THE CONCRETE FOUNDATION TO BUILDING VENTILATION SHAFT AT THE SOUTH-EAST CORNER OF THE BARRIE MOLSON CENTRE. THE TABLET IS 230 mm BELOW THE TOP OF THE FOUNDATION SHAFT WALL AND 110 mm WEST OF THE EAST SIDE OF THE SOUTH-EAST CORNER OF THE VENTILATION SHAFT WALL. (ELEVATION=287.04, NORTHING 4910231 METRES, EASTING 605468 METRES).

NOTE: THE HORIZONTAL COORDINATE SYSTEM IS NAD-1983 ORIGINAL AND VERTICAL SYSTEM IS CGVD28-78.

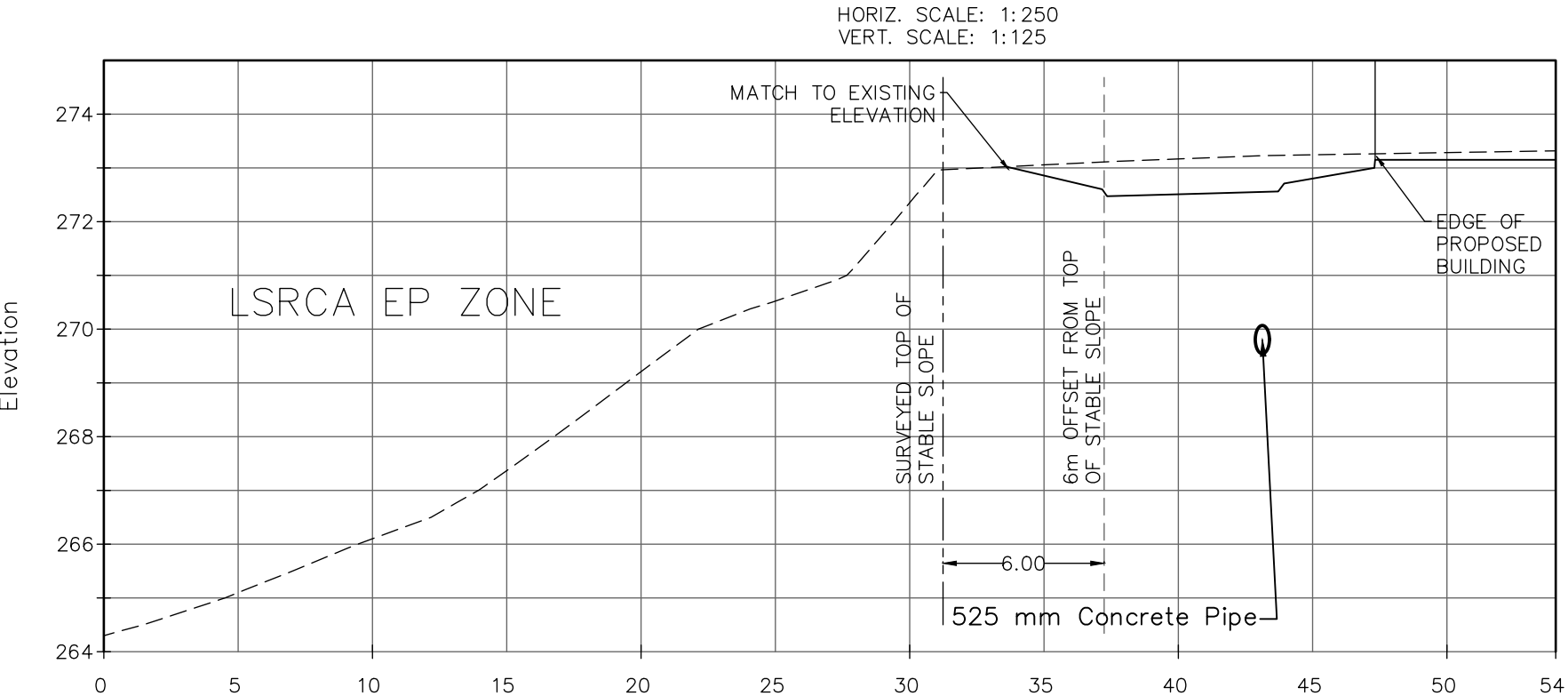
**SITE GRADING PLAN**  
 (FOR REFERENCE, PENDING APPROVAL)

DESIGNED BY: GR CHECKED BY: JY DATE: JANUARY 2020  
 DRAWING BY: BJ CHECKED BY: JY PROJECT NO. 20005  
 SWM BY: GR CHECKED BY: JY DRAWING NO. SW-G  
 SCALE: 1:500m 0m 5m 10m 20m 30m

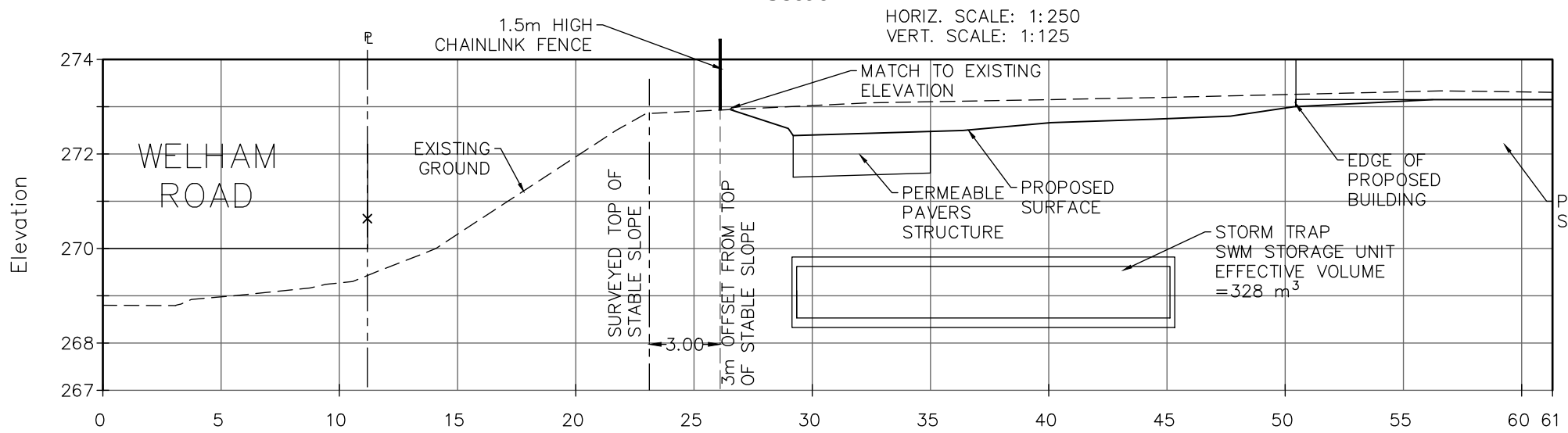


MAPLEVIEW DRIVE

Section A-A



Section B-B



NOTE: REGRADING WITHIN THE 6m BUFFER FROM TOP OF STABLE SLOPE HAS BEEN REVIEWED BY TERRAPROBE AND CONFIRMED TO HAS NO NEGATIVE IMPACT TO THE STABILITY OF THE SLOPE.