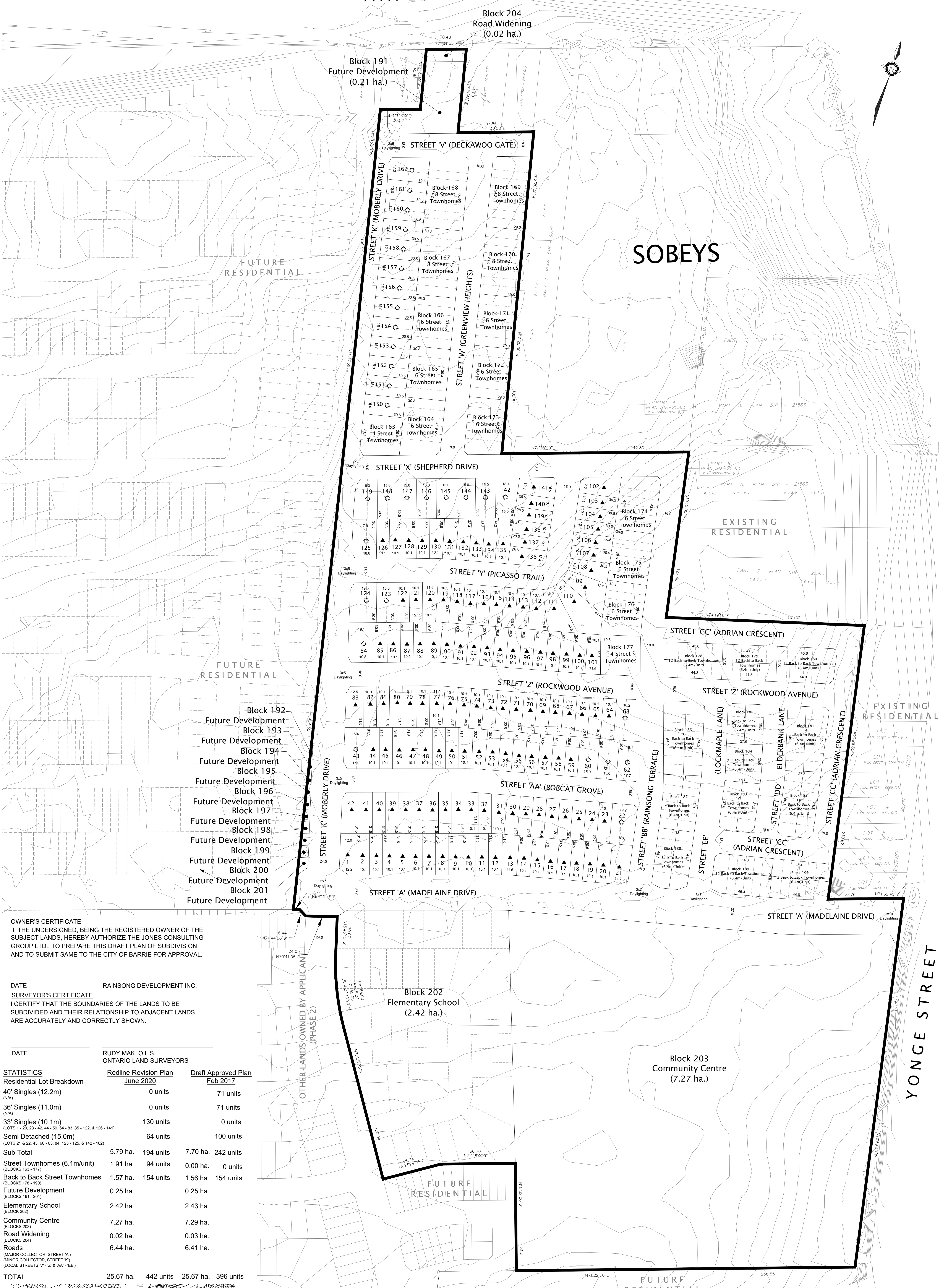


MAPLEVIEW DRIVE EAST

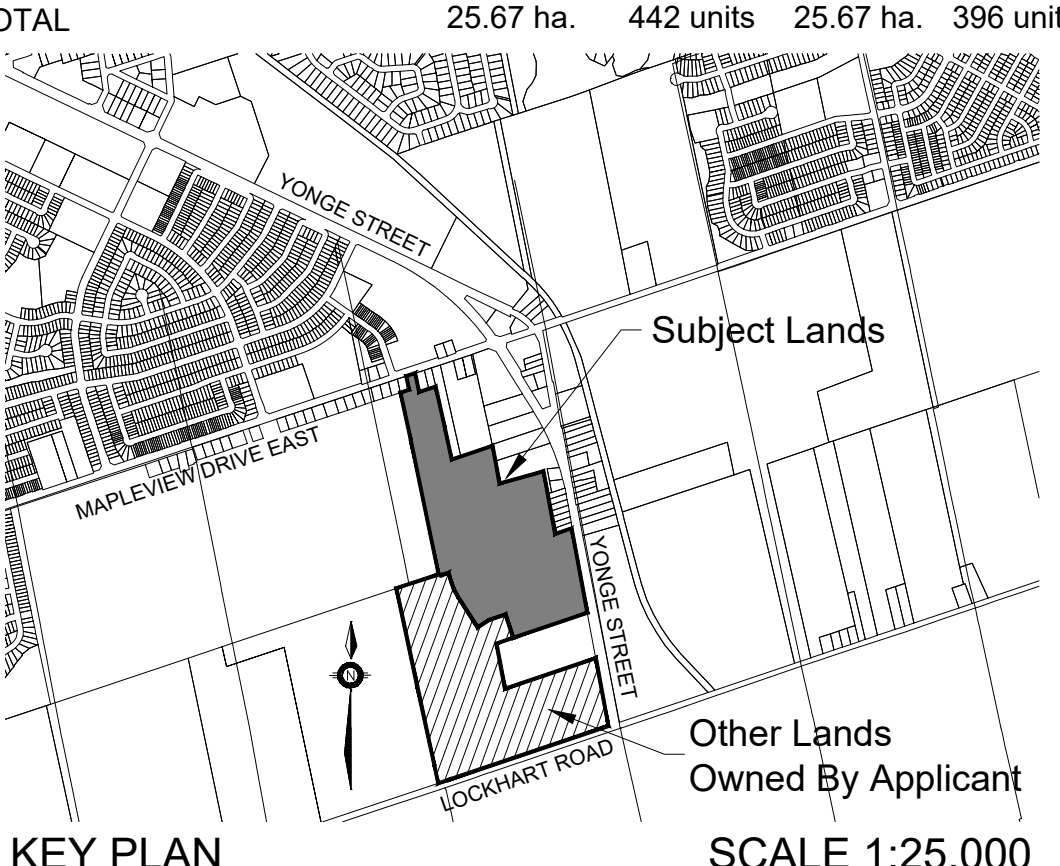


OWNER'S CERTIFICATE
I, THE UNDERSIGNED, BEING THE REGISTERED OWNER OF THE SUBJECT LANDS, HEREBY AUTHORIZE THE JONES CONSULTING GROUP LTD., TO PREPARE THIS DRAFT PLAN OF SUBDIVISION AND TO SUBMIT SAME TO THE CITY OF BARRIE FOR APPROVAL.

DATE _____ **RAINSONG DEVELOPMENT INC.**
SURVEYOR'S CERTIFICATE
I CERTIFY THAT THE BOUNDARIES OF THE LANDS TO BE SUBDIVIDED AND THEIR RELATIONSHIP TO ADJACENT LANDS ARE ACCURATELY AND CORRECTLY SHOWN.

DATE _____ **RUDY MAK, O.L.S.**
ONTARIO LAND SURVEYORS

STATISTICS	Redline Revision Plan June 2020	Draft Approved Plan Feb 2017
Residential Lot Breakdown		
★ 40' Singles (12.2m) (N/A)	0 units	71 units
■ 36' Singles (11.0m) (N/A)	0 units	71 units
▲ 33' Singles (10.1m) (LOTS 1-28, 33-42, 44-59, 64-83, 85-122, & 126-141)	130 units	0 units
⊕ Semi Detached (15.0m) (LOTS 21 & 22, 43, 60-83, 84, 123-125, & 142-162)	64 units	100 units
Sub Total	5.79 ha. 194 units	7.70 ha. 242 units
Street Townhomes (6.1m/unit) (BLOCKS 163-177)	1.91 ha. 94 units	0.00 ha. 0 units
Back to Back Townhomes (BLOCKS 178-190)	1.57 ha. 154 units	1.56 ha. 154 units
Future Development (BLOCKS 191-201)	0.25 ha. 0.25 ha.	
Elementary School (BLOCK 202)	2.42 ha. 2.43 ha.	
Community Centre (BLOCKS 203)	7.27 ha. 7.29 ha.	
Road Widening (BLOCKS 204)	0.02 ha. 0.03 ha.	
Roads (MAJOR COLLECTOR, STREET 'A') (MINOR COLLECTOR, STREET 'K') (LOCAL STREETS 'V' - 'Z' & 'AA' - 'EE')	6.44 ha. 6.41 ha.	
TOTAL	25.67 ha. 442 units	25.67 ha. 396 units

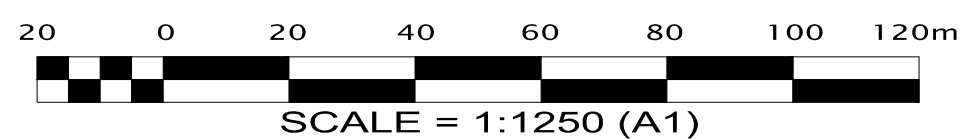


ADDITIONAL INFORMATION REQUIRED UNDER SECTION 51(17) OF THE PLANNING ACT

- a) SHOWN ON DRAFT PLAN
- b) SHOWN ON DRAFT PLAN
- c) SHOWN ON KEY PLAN
- d) RESIDENTIAL, INSTITUTIONAL, COMMUNITY CENTRE
- e) SHOWN ON DRAFT PLAN
- f) SHOWN ON DRAFT PLAN
- g) SHOWN ON DRAFT PLAN
- h) MUNICIPAL PIPED WATER TO BE PROVIDED
- i) CLAY LOAM
- j) SHOWN ON DRAFT PLAN
- k) ALL MUNICIPAL SERVICES TO BE PROVIDED
- l) SHOWN ON DRAFT PLAN

Draft Plan of Subdivision

Part of Lot 15, Concession 11
Former Township of Innisfil,
Now in the
City of Barrie
2020



DATE	DESCRIPTION	DRAWN
MAY 19, 2020	LOTING REVISIONS	m.c.r.
JUNE 18, 2020	REDLINE REVISIONS AS PER COMMENTS	m.c.r.
JUNE 29, 2020	REVISIONS AS PER TRAFFIC COMMENTS	m.c.r.

RAINSONG - PHASE 1
DRAFT PLAN OF SUBDIVISION

RAYMOND J. DUHON
REGISTERED PROFESSIONAL PLANNER

Date Issued: FEB. 10/2017
Checked By: RD
Project No.: RAI-15186
Drawn By: m.c.r.
Drawing Name: RAI-15186-DP-2.dwg

JONES
CONSULTING GROUP LTD.
PLANNERS & ENGINEERS
229 Mapleview Drive East, Unit 1, Barrie, Ontario, L4N 0W5
Phone: 705-734-2538
www.jonesconsulting.com