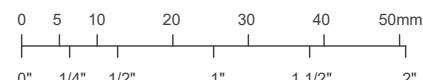


This drawing has been created electronically.

Handwritten or manual revisions to the drawing are only valid when accompanied by the design engineer's initials.

Do not scale drawings.
Check and verify all dimensions and information on the drawings and report all errors or omissions to the Consultant before proceeding with the work.
This drawing shall not be reproduced in any manner, in part or in whole, for any project other than that for which it was prepared.
This drawing, and all design concepts it contains, are an instrument of professional service and remain the property of Gerrits Engineering.

This drawing may have been reduced.



No.	Issuance Description	YY/MM/DD
1.	SITE PLAN APPROVAL	2007/22
2.		

SITE PLAN APPROVAL

Client
DI GREGORIO

Project
76 BRYNE, DRIVE BARRIE, ON

NOTES AND DETAILS

-1-

Project No.	899-001-17	Designed by	AC	Checked by	KF
Scale:	N/A	Drawn by	AC	Approved by	PMD
Orientation		Stamp			

Drawing No.

ND-1

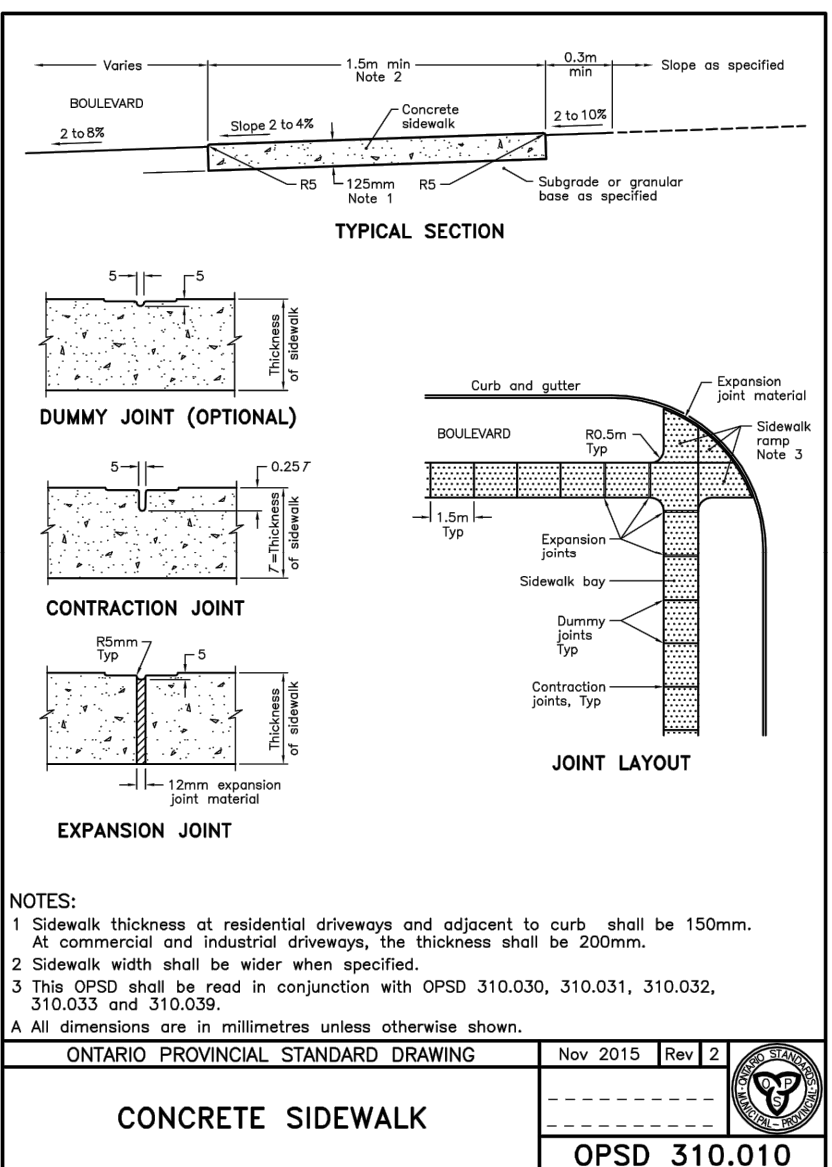
1. DRAWINGS

- THE NOTES ON THIS SHEET APPLY TO ALL WORKS UNDER THIS CONTRACT UNLESS OTHERWISE NOTED ON THE SPECIFIC DETAIL DWGS.
- THE STANDARD DRAWINGS OF THE CITY OF BARRIE, ONTARIO PROVINCIAL STANDARDS AND SPECIFICATIONS (OPSD) AND THE ONTARIO PROVINCIAL STANDARD DRAWINGS (OPSD) CONSTITUTE PART OF THE PLANS OF THIS CONTRACT.
- ORDER OF PRECEDENCE OF STANDARD DRAWINGS IS FIRSTLY THE CITY OF BARRIE AND SECONDLY ONTARIO PROVINCIAL STANDARD DRAWINGS.
- THE STANDARD DRAWINGS INCLUDED WITH THESE PLANS ARE PROVIDED FOR CONVENIENCE ONLY AND ARE NOT TO BE CONSTRUED TO BE A COMPLETE SET FOR THE PURPOSE OF THE CONTRACT. IT IS THE CONTRACTOR'S RESPONSIBILITY TO OBTAIN ALL RELEVANT STANDARD DRAWINGS AND SPECIFICATIONS AS REQUIRED FOR THIS CONTRACT.

4. PARKING LOT

- THE PARKING LOT PAVEMENT STRUCTURE SHALL CONSIST OF THE FOLLOWING:

LIGHT DUTY	HEAVY DUTY
40mm HL3 ASPHALT	40mm HL3 ASPHALT
50mm HL8 ASPHALT	80mm HL8 ASPHALT
150mm GRANULAR 'A'	150mm GRANULAR 'A'
300mm GRANULAR 'B'	300mm GRANULAR 'B'
- NATIVE SUBGRADE TO BE COMPACTED TO MINIMUM 98% STANDARD PROCTOR MAXIMUM DRY DENSITY.
- PAVEMENT STRUCTURE TO BE CONFIRMED BY GEOTECHNICAL ENGINEER PRIOR TO START OF CONSTRUCTION



2. MEASUREMENTS

- ALL DIMENSIONS ARE IN METRES, EXCEPT PIPE DIAMETERS, WHICH ARE IN MILLIMETRES, UNLESS SPECIFIED OTHERWISE.
- ALL DIMENSIONS SHALL BE CHECKED AND VERIFIED IN THE FIELD BY THE CONTRACTOR PRIOR TO ANY CONSTRUCTION, AND ANY DISCREPANCIES SHALL BE REPORTED IMMEDIATELY TO THE ENGINEER.

5. SEWERS

- INTERNAL SANITARY SEWERS AND LATERALS TO BE MINIMUM 150mm DIAMETER PVC DR 28 WITH JOINTS CONFORMING TO CSA STANDARD A257.3.
- SEWERS SHALL BE CONSTRUCTED WITH BEDDING AS PER OPSD 802.010 (GRANULAR 'A' EMBEDMENT MATERIAL), UNLESS APPROVED OTHERWISE BY THE ENGINEER.
- PRECAST MANHOLES SHALL BE 1200mm DIAMETER UNLESS OTHERWISE SPECIFIED, AND SHALL BE IN ACCORDANCE WITH OPSD 701.010, FRAME AND GRATE TO BE WATERTIGHT AND TO CONFORM TO OPSD 401.030.
- MANHOLE TOPS ARE TO BE SET TO FINAL GRADE.

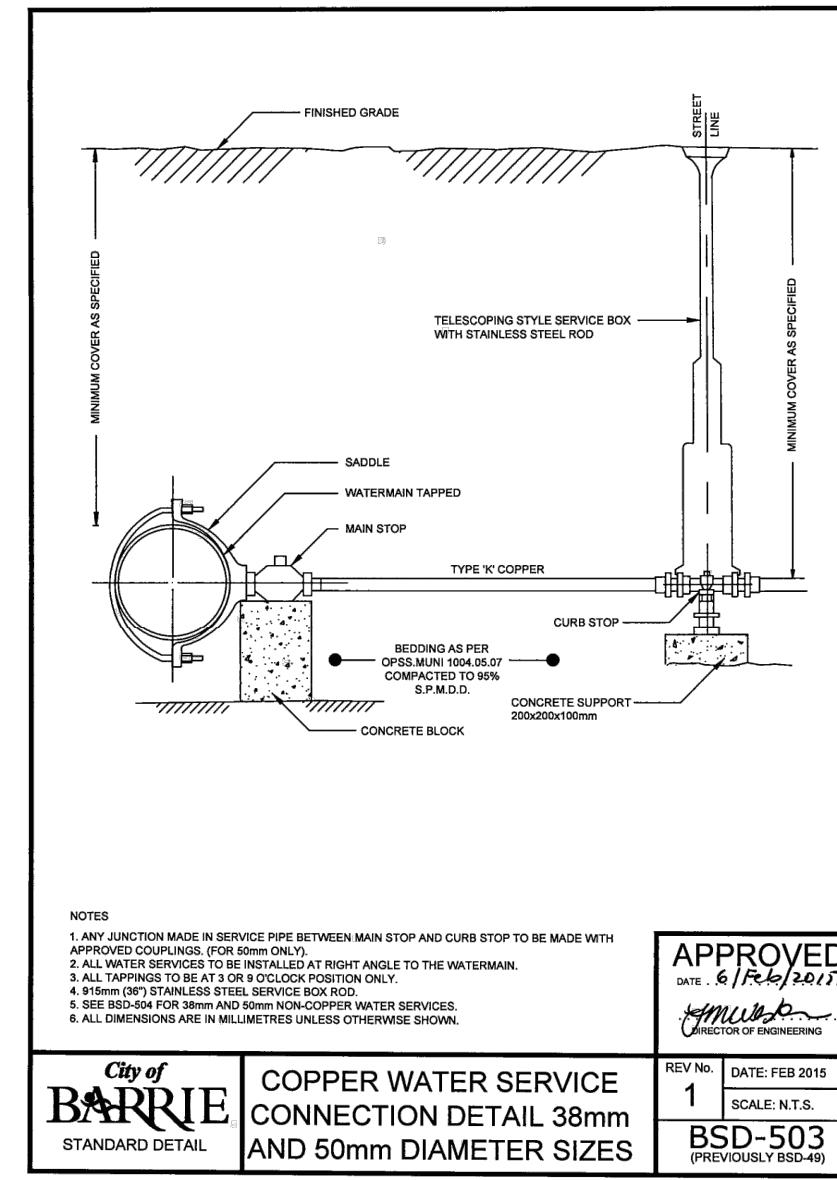
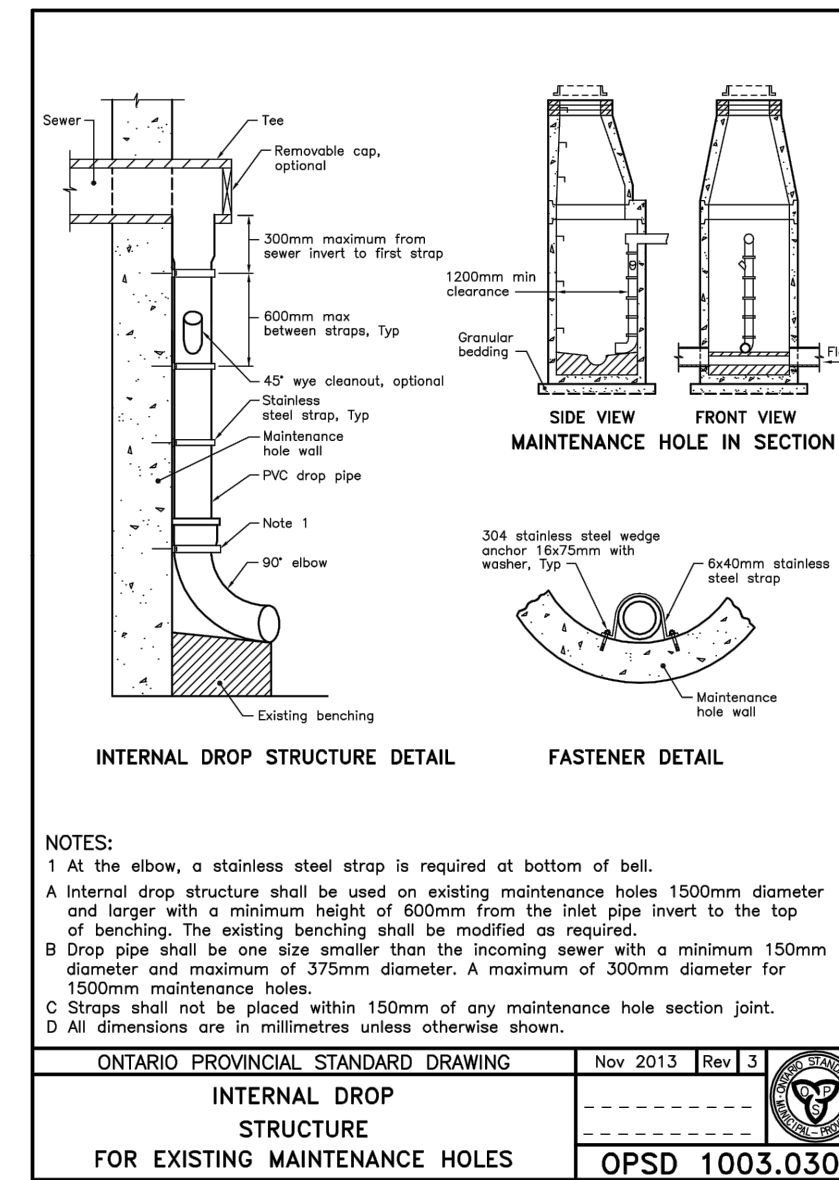
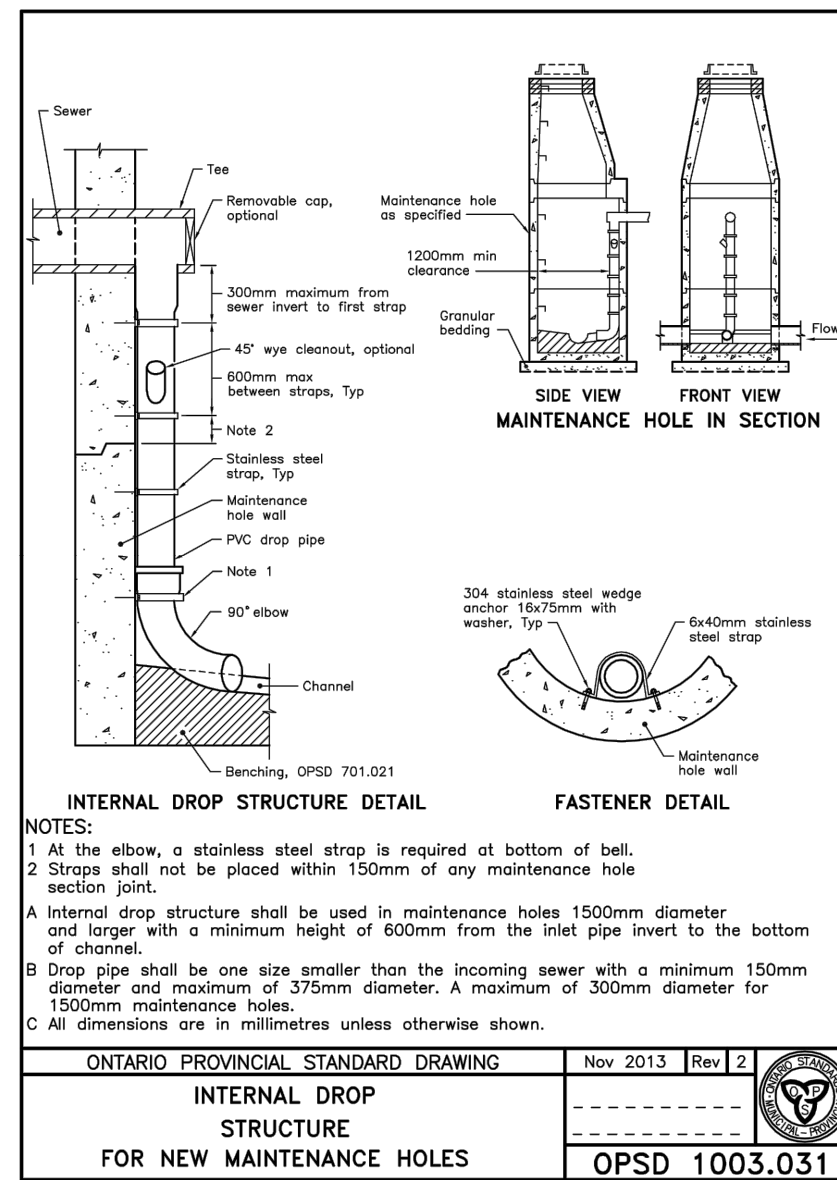
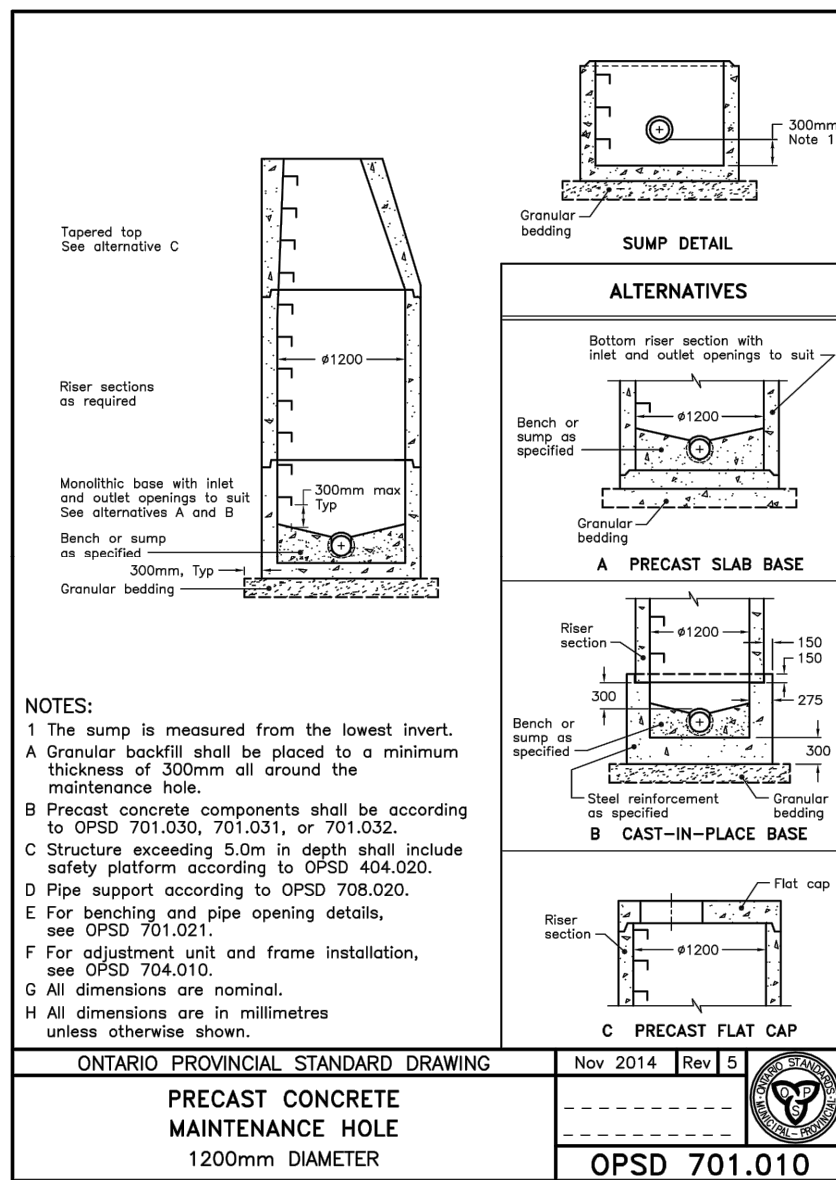
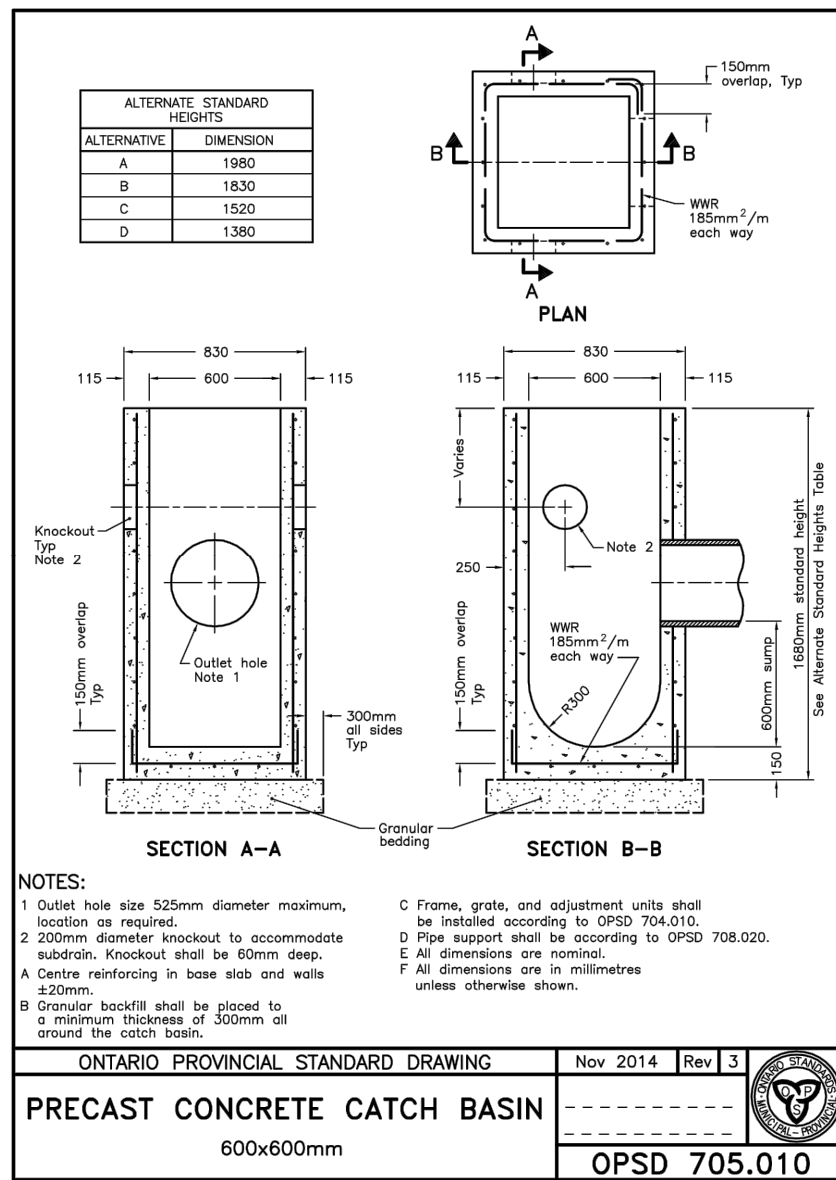
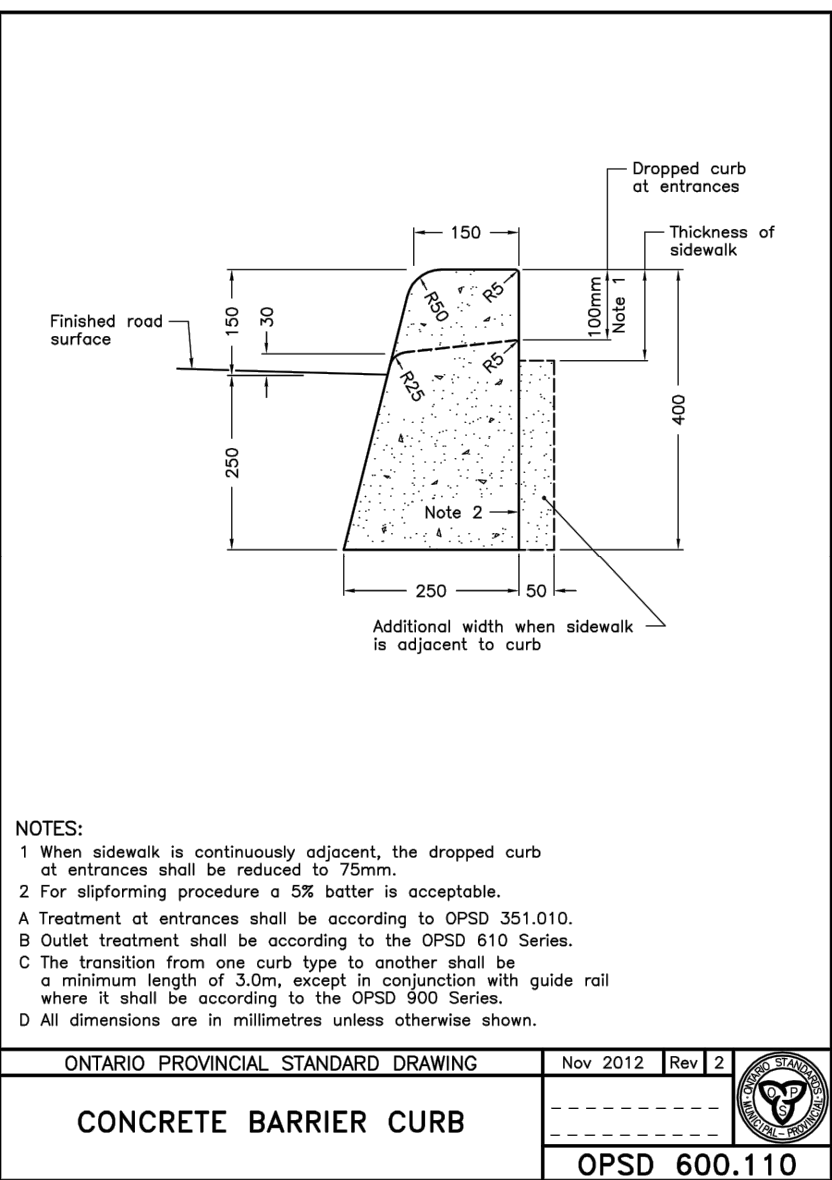
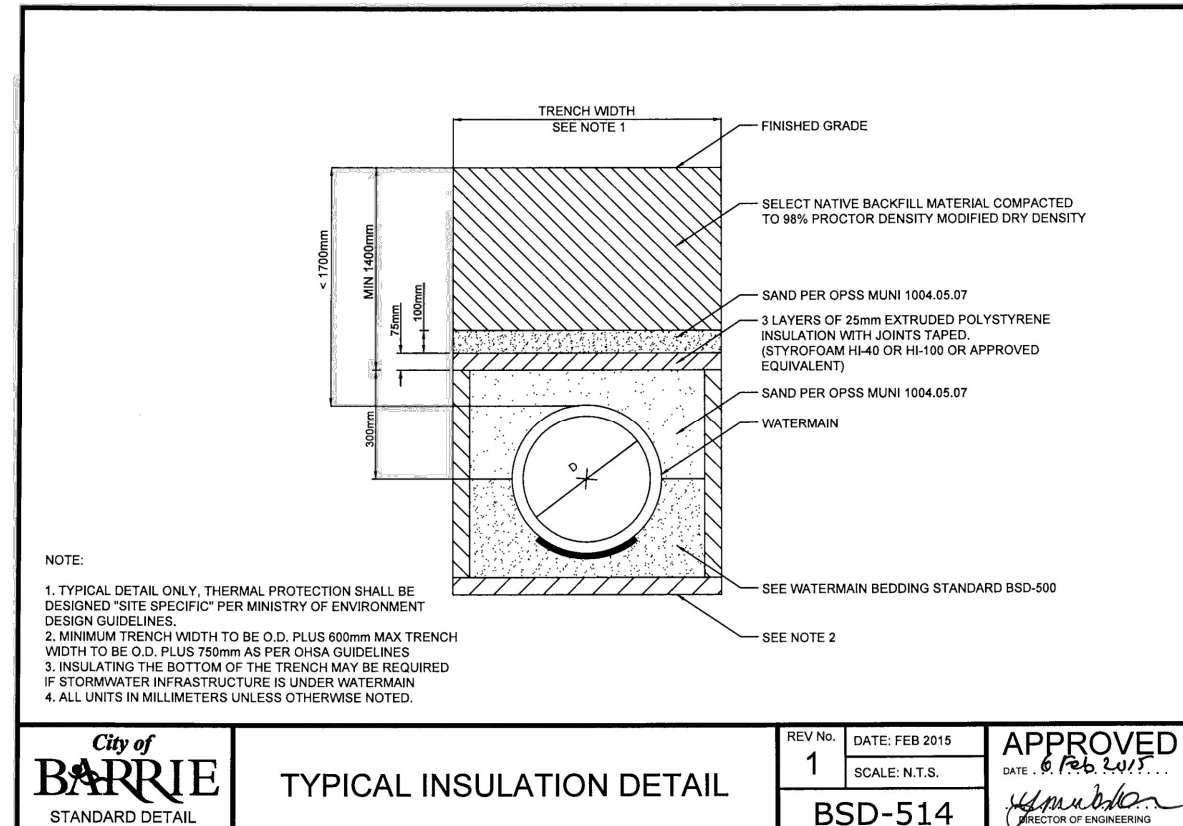
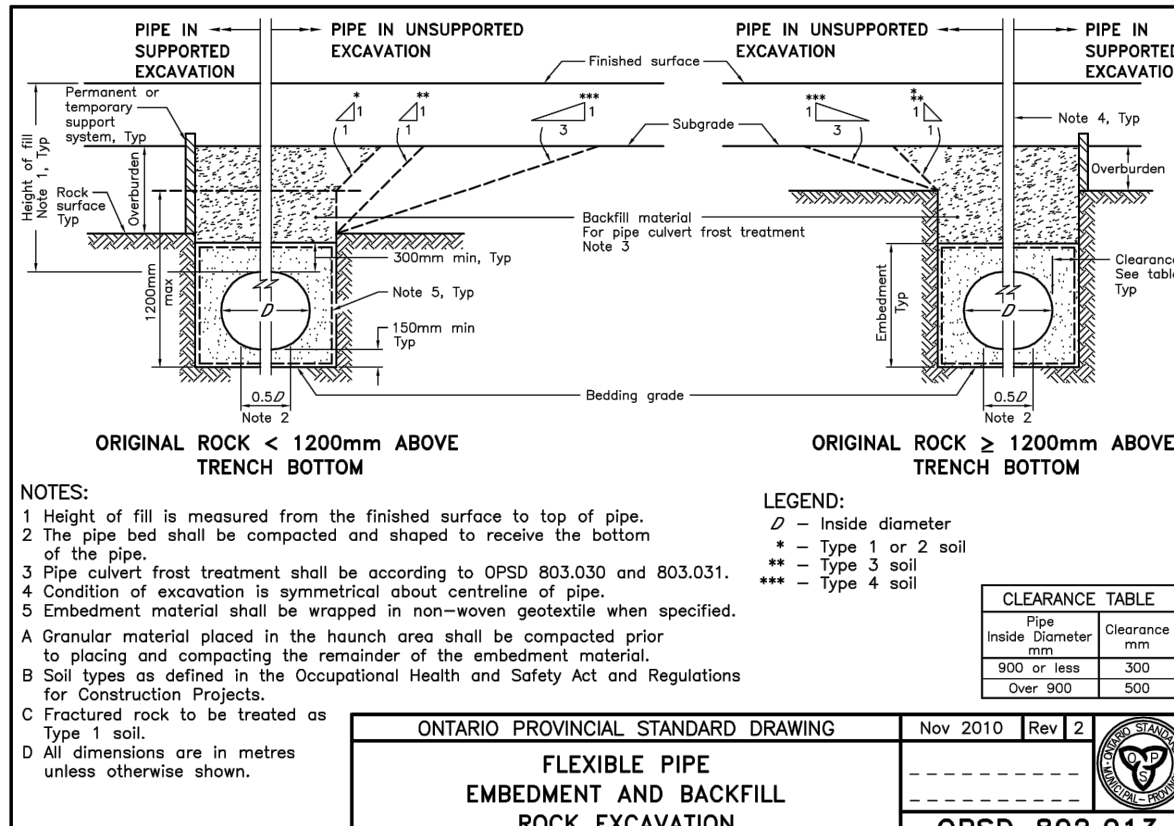
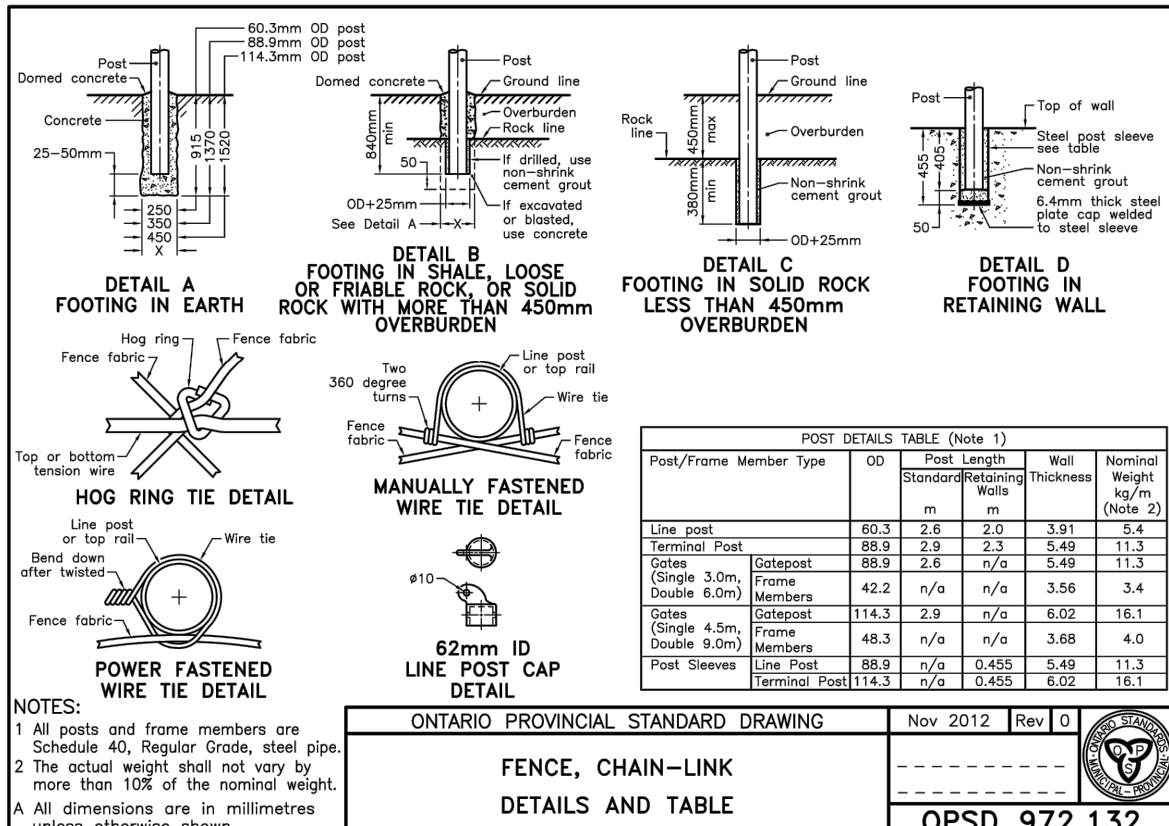
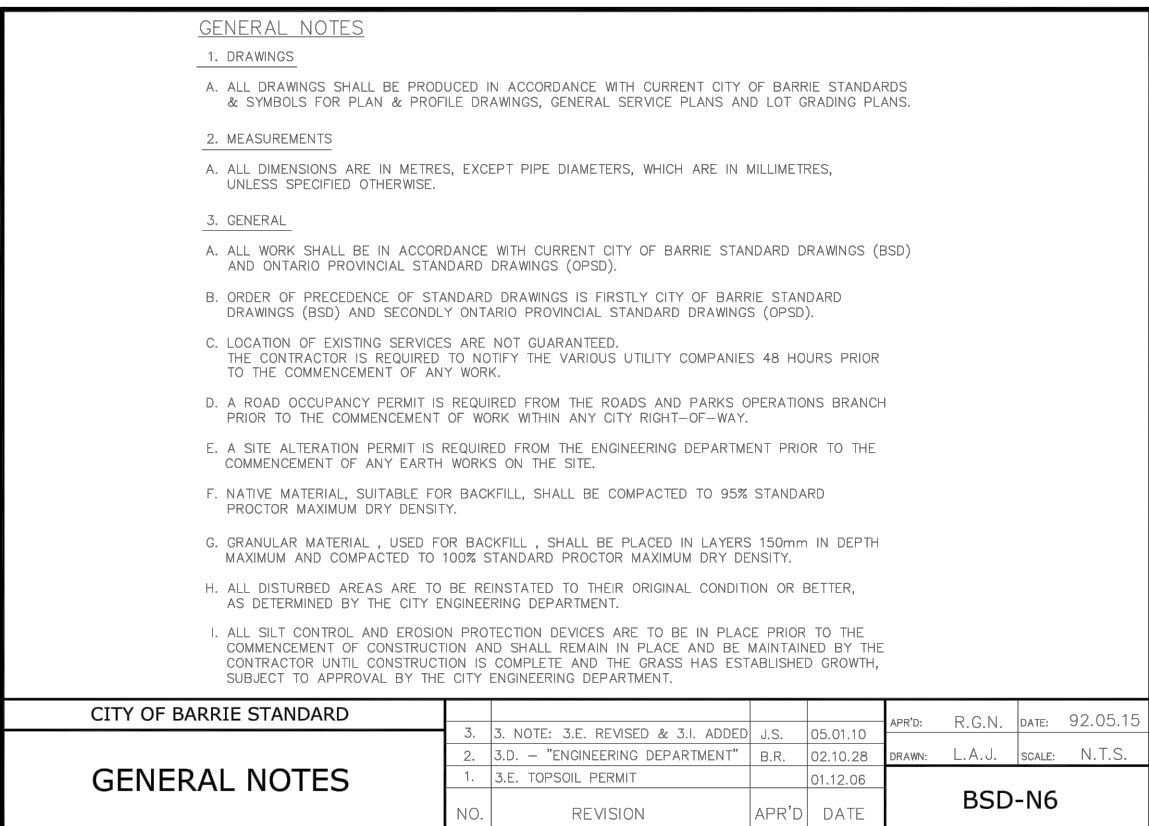
3. GENERAL




- EXISTING SERVICES AND UTILITIES SHOWN ON THESE CONTRACT DRAWINGS ARE BASED ON THE BEST INFORMATION AVAILABLE AND THEIR LOCATIONS ARE NOT GUARANTEED. THE CONTRACTOR SHALL INTERPRET THIS INFORMATION AS HE WISHES WITH THE UNDERSTANDING THAT THE OWNER DISCLAIMS ALL RESPONSIBILITY FOR ITS ACCURACY AND/OR SUFFICIENCY. THE CONTRACTOR IS REQUIRED TO NOTIFY THE VARIOUS UTILITY COMPANIES 48 HOURS PRIOR TO THE COMMENCEMENT OF ANY WORK.
- NATIVE MATERIAL, SUITABLE FOR BACKFILL, SHALL BE COMPACTED TO 95% STANDARD PROCTOR MAXIMUM DRY DENSITY.
- GRANULAR MATERIAL, USED FOR BACKFILL, SHALL BE PLACED IN LAYERS 150mm IN DEPTH MAXIMUM AND COMPACTED TO 100% STANDARD PROCTOR MAXIMUM DRY DENSITY.
- ALL DISTURBED AREAS ARE TO BE REINSTATED TO THEIR ORIGINAL CONDITION OR BETTER, AS DETERMINED BY THE ENGINEER, ALL GRASS AND VEGETATION COVERED AREAS SHALL BE RESTORED BY PLACING 200mm OF APPROVED TOPSOIL AND NURSERY SOD UNLESS NOTED OTHERWISE.

6. WATERMAINS

- THE MINIMUM HORIZONTAL SEPARATION BETWEEN THE WATERMAIN AND THE SANITARY/STORM SEWER IS TO BE 2.5 METERS.
- A MINIMUM OF 0.5m VERTICAL CLEARANCE BETWEEN THE WATERMAIN AND ALL UTILITIES MUST BE KEPT, WHILE STILL MAINTAINING A MINIMUM DEPTH OF COVER AT ALL TIMES. WHERE WATERMAIN CONFLICTS WITH SEWER PIPE, DEFLECT WATERMAIN HORIZONTALLY OR VERTICALLY TO OBTAIN MINIMUM COVER AND VERTICAL CLEARANCE (THIS SHEET) WILL BE REQUIRED.
- WATERMAINS SHALL BE PVC DR 18 AND INSTALLED WITH A MINIMUM COVER OF 1.7m OVER THE MAINS. IF MINIMUM COVER CAN NOT BE ACHIEVED, INSULATION AS PER DETAIL (THIS SHEET) WILL BE REQUIRED.
- WATERMAIN SHALL BE CONSTRUCTED WITH BEDDING AS PER OPSD 802.010 (GRANULAR 'A' EMBEDMENT MATERIAL) FOR FLEXIBLE PIPES.
- COPPER WATER SERVICES 25mm DIA. SHALL BE EMBEDDED IN SAND 100mm ABOVE AND BELOW TO CONFORM TO OPSD 1104.010.
- WATERMAIN BEDDING SHALL CONSIST OF WINTER SAND, 150mm BELOW AND 300mm ABOVE THE WATERMAIN.
- CONCRETE THRUST BLOCKS ARE TO BE INSTALLED AT ALL TEES, BENDS, HYDRANTS, ENDS OF MAINS AND CONNECTIONS 100mm AND LARGER AS PER STANDARD DRAWINGS. ALL BENDS TO BE RESTRAINED.
- ALL JOINTS MUST BE RESTRAINED AND THRUST BLOCKED.
- ANY EXISTING, ON SITE, WATER WELLS MUST BE DECOMMISSIONED.
- WHERE A COPPER SERVICE MUST BE JOINED UNDER THE FLOOR, THE COPPER SHALL BE JOINED BY SILVER SOLDER CONNECTION ONLY.
- ALL SERVICE PIPE MATERIAL MUST BE DUCTILE IRON FROM THE RESTRAINING FLANGE TO A MINIMUM OF 3 METERS OUTSIDE THE FOUNDATION. REFER TO BSD-61. ALL DUCTILE SHALL BE POLY WRAPPED FOR ADDED PROTECTION.

- OPERATION OF FIRE HYDRANTS AND VALVES ON POTABLE WATER BY OTHER THAN MUNICIPAL WORKS DEPARTMENT IS PROHIBITED.
- THE CITY WILL SWAB, CHLORINATE AND FLUSH ALL NEW SERVICES. THE CONTRACTOR SHALL PERFORM PRESSURE TEST WITH WATER FIELD COORDINATOR WITNESSING.
- EXTERNAL CONTRACTOR TO COORDINATE WITH INTERNAL CONTRACTOR ON ALL INSTALLATION, SWABBING, CHLORINATING AND TESTING WITNESSED BY WATER FIELD SERVICES COORDINATOR.
- RESTRAINING WILL BE REQUIRED ON ALL HYDRANTS A MINIMUM OF THREE LENGTHS OF PIPE. HYDRANTS TO BE PAINTED RED.
- TRACING WIRE (#12 TWO STRANDED COPPER) TO BE INSTALLED ON THE TOTAL LENGTH OF ALL PVC WATERMAINS AND BROUGHT UP AT EACH HYDRANT AND CONNECTED TO FLANGE BOLT.
- SERVICE TAPINGS SHALL BE PLACED AT A MINIMUM SEPARATION OF 1.0m AND A MINIMUM OF 0.6m FROM JOINTS.
- CONTRACTOR TO PROVIDE PLAN FOR REMOVING CHLORINATED WATER FROM SITE.
- A CHLORINATION TAIL SHALL BE INSTALLED JUST BEHIND TAPPING VALVE TO FACILITATE CHLORINATING SERVICE, TO BE REMOVED AFTER TESTING.



<p align="center">PROJECT INFORMATION</p> <hr/> ENGINEERED PRODUCT MANAGER AGS SALES REP. PROJECT NO.: _____	 <h1 style="margin: 0;">4DS Canada</h1> <h2 style="margin: 0;">76 BRYNE DR</h2> <h3 style="margin: 0;">BARRIE, ON</h3>	<div style="text-align: right;">   </div> <p style="font-size: small; text-align: right;"> FOR BIMATCH INSTRUCTIONS, DOWNLOAD THE INSTALLATION APP </p>
---	---	--

SC-310 STORMTECH CHAMBER SPECIFICATIONS

1. CHAMBERS SHALL BE STORMTECH SC-310.
2. CHAMBERS SHALL BE ARCH-SHAPED AND SHALL BE MANUFACTURED FROM VIRGIN, IMPACT-MODIFIED POLYPROPYLENE OR POLYSTYRENE COPOLYMERS.
3. CHAMBERS SHALL BE CERTIFIED TO CSA B14 "POLYMERIC SUB-SURFACE STORMWATER MANAGEMENT STRUCTURES"; AND MEET THE REQUIREMENTS OF ASTM F2922 (POLYETHYLENE) OR ASTM F2418-15a (POLYPROPYLENE), STANDARD SPECIFICATION FOR CONJUGATED WALL STORMWATER COLLECTION CHAMBERS.
4. CHAMBER ROWS SHALL PROVIDE CONTINUOUS UNOBSTRUCTED INTERNAL SPACE WITH NO INTERNAL SUPPORTS THAT WOULD IMPAIR FLOW OR LIMIT ACCESS FOR INSPECTION.
5. THE STRUCTURAL DESIGN OF THE CHAMBERS, THE STRUCTURAL BACKFILL, AND THE INSTALLATION REQUIREMENTS SHALL ENSURE THAT THE LOAD FACTORS SPECIFIED IN THE ASDHRY LIFT BRIDGE DESIGN SPECIFICATION, SECTION 12.3, ARE MET FOR: 1) LONGITUDINAL DEAD LOADS AND SHORT SPANNING LIVE LOADS BASED ON THE CLAS GLE STRUCK TRUCK AND THE ASDHRY DESIGN TRUCK WITH CONDENSATION FOR IMPACT AND MULTIPLE VEHICLE PRESENCES.
6. CHAMBERS SHALL BE DESIGNED, TESTED AND ALLOWABLE LOAD CONFIGURATIONS DETERMINED IN ACCORDANCE WITH ASTM F7371 "STANDARD PRACTICES FOR STRUCTURAL DESIGN OF THERMOPLASTIC CORRUGATED WALL STORMWATER COLLECTION CHAMBERS". MINIMUM PERMANENT (75-YR) COVER (LOAD AND S) SHALL BE 1.0M ABOVE FINISH GRADE (LIVE LOAD MINIMUM COVER 2) MAXIMUM PERMANENT (75-YR) COVER (LOAD AND S) SHALL BE 1.0M ABOVE COVER WITH PARKED 1-WHEEL, ASDHRY DESIGN TRUCK.
7. REQUIREMENTS FOR HANDLING AND INSTALLATION:
 a) FRANTION THE WIDTH OF CHAMBERS DURING SHIPPING AND HANDLING, CHAMBERS SHALL HAVE INTEGRAL, INTERLOCKING STACKING LUGS;
 b) TO INSURE A SECURE JOINT DURING INSTALLATION AND BACKFILL, THE HEIGHT OF THE CHAMBER JOINT WILL NOT BE LESS THAN 8 mm (1/4");
 c) TO ENSURE THE INTEGRITY OF THE ARCH SHAPE DURING INSTALLATION, a_1 THE ARCH STIFFNESS CONSTANT AS DEFINED IN SECTION 2.2.2 OF ASTM F2922 SHALL BE GREATER THAN OR EQUAL TO, 1.0X (LBS/IN) AND b) TO RESIST CHAMBER DEFORMATION DURING INSTALLATION AT ELEVATED TEMPERATURES (ABOVE 23 / 73 ° F), CHAMBERS SHALL BE PRODUCED FROM REFLECTIVE GOLD OR YELLOW COLOURS.
8. ONLY CHAMBERS THAT ARE APPROVED BY THE SITE DESIGN ENGINEER WILL BE ALLOWED; UPON REQUEST BY THE SITE DESIGN ENGINEER OR OWNER, THE CHAMBER MANUFACTURER SHALL SUBMIT A STRUCTURAL EVALUATION FOR APPROVAL BEFORE DELIVERING CHAMBERS TO THE PROJECT SITE AS FOLLOWS:
 - THE STRUCTURAL EVALUATION SHALL DEMONSTRATE THAT THE SAFETY FACTORS ARE GREATER THAN OR EQUAL TO 1.85 FOR DEAD LOAD AND 1.75 FOR LIVE LOAD, THE MINIMUM REQUIRED BY ASTM F7371 AND BY SECTIONS 3.0 AND 12.2 OF THE ASDHRY LIFTS-Bridge DESIGN SPECIFICATIONS FOR THERMAL ACTIC PIKE;
 - THE TEST DERIVED CREEP MODULUS AS SPECIFIED IN ASTM F2922 SHALL BE USED FOR PERMANENT DEAD LOAD DESIGN EXCEPT THAT IT SHALL BE THE 75-YEAR MODULUS FOR PERMANENT LOADS.
9. CHAMBERS AND END CAPS SHALL BE PRODUCE AT AN ISO 9001 CERTIFIED MANUFACTURING FACILITY.

IMPORTANT - NOTES FOR THE BIDDING AND INSTALLATION OF THE SC-310 SYSTEM

1. STORMTECH SC-310 CHAMBERS SHALL NOT BE INSTALLED UNTIL THE MANUFACTURER'S REPRESENTATIVE HAS COMPLETED A PRE-CONSTRUCTION MEETING WITH THE INSTALLERS.
2. STORMTECH SC-310 CHAMBERS SHALL BE INSTALLED IN ACCORDANCE WITH THE "STORMTECH SC-310SCG-HVDCO-780 CONSTRUCTION GUIDE".
3. CHAMBERS ARE NOT TO BE BACKFILLED WITH A DOZER OR AN EXCAVATOR SITUATED OVER THE CHAMBERS.
 - STONEHOPPER RECLAIMERS 3 BACKFILL METHOD;
 - STONEHOPPER LOCATED OFF THE CHAMBER BED;
 - BACKFILL AS ROWS ARE BEING USED USING AN EXCAVATOR ON THE FOUNDATION STONE OR SUBGRADE;
 - BACKFILL FROM OUTSIDE THE EXCAVATION USING A LONG BOOM HOOR OR EXCAVATOR.
4. THE FOUNDATION STONE SHALL BE LEVELLED AND COMPACTED PRIOR TO PLACING CHAMBERS.
5. JOINTS BETWEEN CHAMBERS SHALL BE PROPERLY SEALED PRIOR TO PLACING STONE.
6. MAINTAIN MINIMUM - 100 mm (4") SPACINGS BETWEEN THE CHAMBER ROWS.
7. EMERGENT STONE SURROUNDING CHAMBERS MUST BE A FLAT, CIRCULAR, ANGULAR SIZE 30-50 mm (1.25-2").
8. THE CONTRACTOR MUST REPORT ANY DISCREPANCIES WITH CHAMBER FOUNDATION MATERIALS BEARING CAPACITIES TO THE SITE DESIGN ENGINEER.
9. ADS RECOMMENDS THE USE OF "ELKSTONE CATON (#1)" INSERTS DURING CONSTRUCTION FOR ALL JUNCTIONS TO PROTECT THE SUBSURFACE STORMWATER MANAGEMENT SYSTEM FROM CONSTRUCTION SITE RUNOFF.

NOTES FOR CONSTRUCTION EQUIPMENT

1. STORMTECH SC-310 CHAMBERS SHALL BE INSTALLED IN ACCORDANCE WITH THE "STORMTECH SC-310SCG-HVDCO-780 CONSTRUCTION GUIDE".
2. THE USE OF CONSTRUCTION EQUIPMENT OVER SC-310 & SC-740 CHAMBERS IS LIMITED:
 - NO RUBBER TIRED LOADERS, DUMP TRUCKS, OR EXCAVATORS ARE ALLOWED UNTIL PROPER FILT DEPTHS ARE REACHED IN ACCORDANCE WITH THE "STORMTECH SC-310SCG-HVDCO-780 CONSTRUCTION GUIDE"
 - WEIGHT LIMITS FOR CONSTRUCTION EQUIPMENT CAN BE FOUND IN THE "STORMTECH SC-310SCG-HVDCO-780 CONSTRUCTION GUIDE".
3. FULL 900 mm (36") OF STABILIZED COVER MATERIALS OVER THE CHAMBERS IS REQUIRED FOR DUMP TRUCK TRAVEL OR UNLOADING.

USE OF A DOZER OR PUSH EMERGENT STONE DURING THE ROWS OF CHAMBERS MAY CAUSE DAMAGE TO THE CHAMBERS AND IS NOT AN ACCEPTABLE BACKFILL METHOD. ANY CHAMBERS DAMAGED BY THE "STONE HOPPER" METHOD ARE NOT COVERED UNDER THE STORMTECH STANDARD WARRANTY.

CONTACT STORMTECH AT : 1-888-882-2694 WITH ANY QUESTIONS ON INSTALLATION REQUIREMENTS OR WEIGHT LIMITS FOR CONSTRUCTION EQUIPMENT.

0001-ADS INC.

[illegible]

MC-310 MECHANICAL SPECIFICATION
N15

90.7" (2304 mm) ACTUAL LENGTH

85.4" (2169 mm) INSTALLED LENGTH
→ BUILD ROW IN THIS DIRECTION

9.9" (251 mm)

16.9" (429 mm)

34.6" (884 mm)

16.9" (429 mm)

34.6" (884 mm)

NOMINAL CHAMBER SPECIFICATIONS

CHAMBER STORAGE	34.6" X 16.9" X 85.4"	(884 mm X 429 mm X 2169 mm)
MINIMUM INSTALLED STORAGE	44.7 CUBIC FEET	(1.26 m ³)
WEIGHT	31.0 CURRIC FEET	(0.88 m ³)
	35.0 lbs.	(15.9 kg)

*ASSUMES 6" (152 mm) ABOVE, BELOW, AND BETWEEN CHAMBERS

B

C

STUBS AT BOTTOM OF END CAP FOR PART NUMBERS ENDING WITH "B"

STUBS AT TOP OF END CAP FOR PART NUMBERS ENDING WITH "T"

PART #	STUB	A	B	C
SC310PE08T / SC310PE10BTPC	8" (10 mm)	9.8" (244 mm)	5.8" (147 mm)	—
SC310PE10B / SC310PE10BTPC	10" (25 mm)	11.9" (302 mm)	3.9" (99 mm)	0.9" (23 mm)
SC310PE10T / SC310PE10BTPC	10" (25 mm)	11.9" (302 mm)	—	0.9" (23 mm)
SC310PE10T / SC310PE10BTPC	10" (25 mm)	11.9" (302 mm)	1.4" (36 mm)	—
SC310PE10B / SC310PE10BTPC	10" (25 mm)	11.9" (302 mm)	—	0.9" (23 mm)
SC310PE10B / SC310PE10BTPC	12" (30 mm)	13.9" (343 mm)	—	0.9" (23 mm)

ALL STUBS, EXCEPT FOR THE SC310PE12B ARE PLACED AT BOTTOM OF END CAP SUCH THAT THE OUTSIDE DIAMETER OF THE STUB IS FLUSH WITH THE BOTTOM OF THE END CAP. FOR ADDITIONAL INFORMATION CONTACT STORMTECH AT 1-888-862-2884.

*FOR THE SC310PE12B THE 12" (300 mm) STUB LIES BELOW THE N15 STUB SO THAT THE FITTING SITS LEVEL.

BACKFILL MATERIAL SHOULD BE REMOVED FROM BELOW THE N15 STUB SO THAT THE FITTING SITS LEVEL.

NOTE: ALL DIMENSIONS ARE NOMINAL.

76 BYRNE DR
BARRE, VT
JANUARY 2011
CHECKED: N/A
PROJECT #

DATE

DESCRIPTION

REV

DATE

CHK


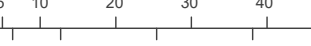
DESCRIPTION

Stormtech
STORMTECH CORP. 10000 N. 10TH AVE. SUITE 100
DENVER, CO 80231
TEL: 303.440.8888 FAX: 303.440.8889
WWW.STORMTECH.COM

9401 STEVENSON BLVD
SUITE 100
DENVER, CO 80231
TEL: 303.440.8888 FAX: 303.440.8889
WWW.STORMTECH.COM

5 OF 10

[illegible][illegible]

 <p>Gerrits ENGINEERING</p> <p>222 Mapleview Drive West, Suite 300 Barrie, ON L4N 9E7 Canada Tel.: 705.737.3303 Fax.: F.705.737.1772 www.gerriteng.com</p>											
This drawing has been created electronically. Handwritten or manual revisions to the drawing are only valid when accompanied by the design engineer's initials. Do not scale drawings. Check and verify all dimensions and information on the drawings and report all errors or omissions to the Consultant before proceeding with the work. This drawing shall not be reproduced in any manner, in part or in whole, for any project other than that for which it was prepared. This drawing, and all design concepts it contains, are an instrument of professional service and remain the property of Gerrits Engineering.											
This drawing may have been reduced. <div style="display: flex; justify-content: space-between; align-items: center;"> 0 5 10 20 30 40 50mm  </div> <div style="display: flex; justify-content: space-around; margin-top: 5px;"> 0' 1/4" 1/2" 1' 1 1/2" 2' </div>											
<table border="1" style="width: 100%; border-collapse: collapse;"> <thead> <tr> <th>No.</th> <th>Issuance Description</th> <th>YY/MM/DD</th> </tr> </thead> <tbody> <tr> <td>1.</td> <td>SITE PLAN APPROVAL</td> <td>20/07/22</td> </tr> <tr> <td>2.</td> <td></td> <td></td> </tr> </tbody> </table>			No.	Issuance Description	YY/MM/DD	1.	SITE PLAN APPROVAL	20/07/22	2.		
No.	Issuance Description	YY/MM/DD									
1.	SITE PLAN APPROVAL	20/07/22									
2.											

ISSUED FOR:

SITE PLAN APPROVAL

Client

DI GREGORIO

Project

76 BRYNE, DRIVE BARRIE, ON

Drawing:

NOTES AND DETAILS

-2-

Project No.	899-001-17	Designed by: AC	Checked by: KF
Scale:	N/A	Drawn by: AC	Approved by: PMD
Oriention	Stamp		

Drawing No.

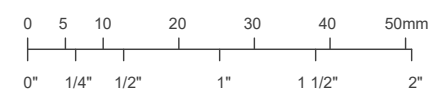
ND-2

This drawing has been created electronically.

Handwritten or manual revisions to the drawing are only valid when accompanied by the design engineer's initials.

Do not scale drawings.
Check and verify all dimensions and information on the drawings and report all errors or omissions to the Consultant before proceeding with the work.
This drawing shall not be reproduced in any manner, in part or in whole, for any project other than that for which it was prepared.
This drawing, and all design concepts it contains, are an instrument of professional service and remain the property of Gerrits Engineering.

This drawing may have been reduced.



No.	Issuance Description	YY/MM/DD
1.	SITE PLAN APPROVAL	20/07/22
2.		

HORIZONTAL CONTROL

ID# 03120040040

R.I.B. /w BRASS CAP. LOCATED ON THE NORTH SIDE OF ARDAGH, APPROX. 50m EAST OF PATTERSON RD. 1st HYDRO POLE ANCHOR.
NORTHING=N4912365.421m, EASTING=E603187.237m

ID# 03120040033

R.I.B. /w BRASS CAP. LOCATED @ BACK OF SIDEWALK ON NORTHWEST CORNER OF ESSA RD. & LOGGERS RUN.
NORTHING=N4912126.819m, EASTING=E603646.391m

VERTICAL CONTROL

ID# 68U500

BRASS TABLET. LOCATED ON HWY 400 OVERPASS OVER ESSA RD., SET IN NORTHEAST FACE OF NORTHEAST CONCRETE WALL (SOUTHERN ABUTMENT) 1.2m NORTHWEST FROM END OF ABUTMENT, 20.2m SOUTHEAST OF CENTRELINE OF ESSA RD., 18cm BELOW TOP OF SIDEWALK AT THE HWY 400 LEVEL, HAVING AN NORTHING=N4912930m, EASTING=E603811m, ELEVATION=253.169m

ID# 97-68

BRASS TABLET. LOCATED ON CONC. BRIDGE CARRYING HWY 400 OVER ESSA RD. TABLET IS SET HORIZ. IN WEST FACE OF NORTH CONC. ABUTMENT, 3.84m SOUTH OF NORTHWEST CORNER, 24cm BELOW COPING & 9.0m WEST OF CENTRELINE OF HWY 400 SOUTHBOUND LANE.
NORTHING=N4912906m, EASTING=E603786m, ELEVATION=252.723m

BENCHMARK: TOP NUT OF EX. HYDRANT HAVING AN ELEVATION OF 289.50

ISSUED FOR:

SITE PLAN APPROVAL

Client

DI GREGORIO

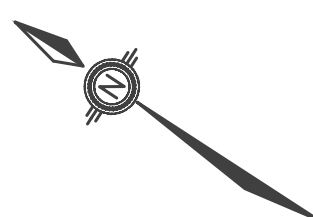
Project

76 BRYNE, DRIVE BARRIE, ON

Drawing:

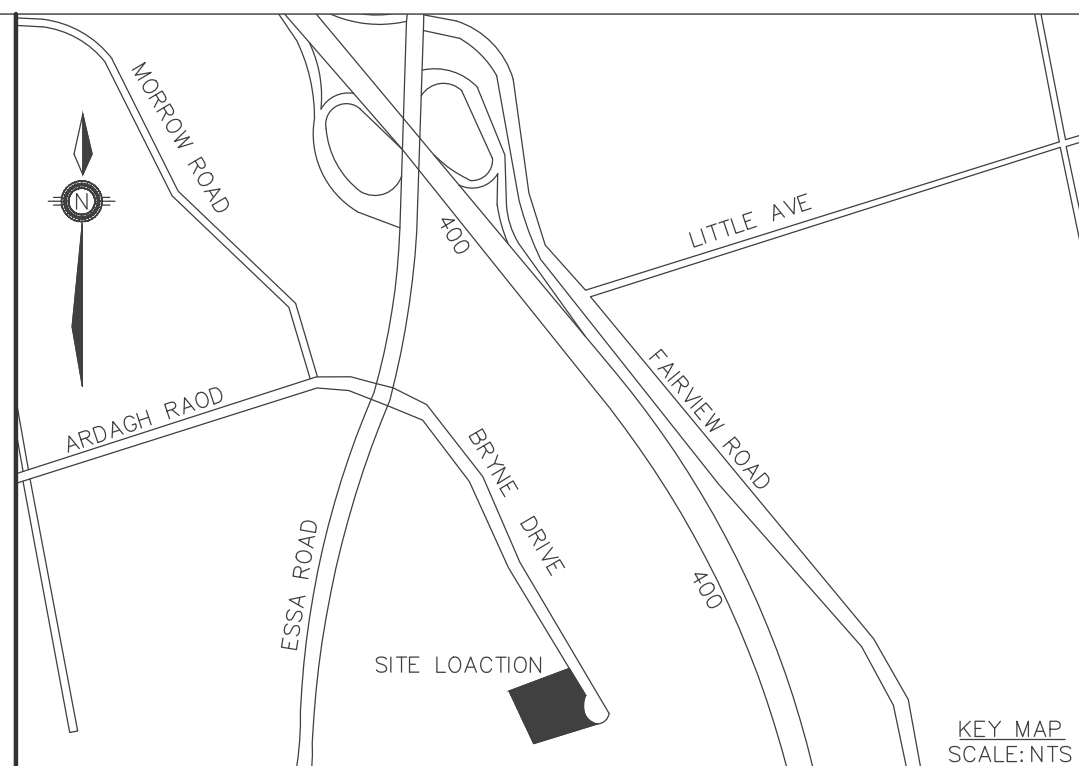
SITE PLAN

Project No.	899-001-17	Designed by:	AC	Checked by:	KF
Scale:	1:300	Drawn by:	AC	Approved by:	PMD
Orientation	Stamp				



Drawing No.

A100



LEGEND

- EXISTING SANITARY MAINTENANCE HOLE
- PROPOSED SANITARY MAINTENANCE HOLE
- EXISTING CATCH BASIN
- PROPOSED CATCH BASIN
- EXISTING CATCH BASIN MAINTENANCE HOLE
- PROPOSED CATCH BASIN MAINTENANCE HOLE
- EXISTING STORM MAINTENANCE HOLE
- PROPOSED STORM MAINTENANCE HOLE

324.00 PROPOSED ELEVATION
324.00 EXISTING ELEVATION

1.6% PROPOSED GRADE

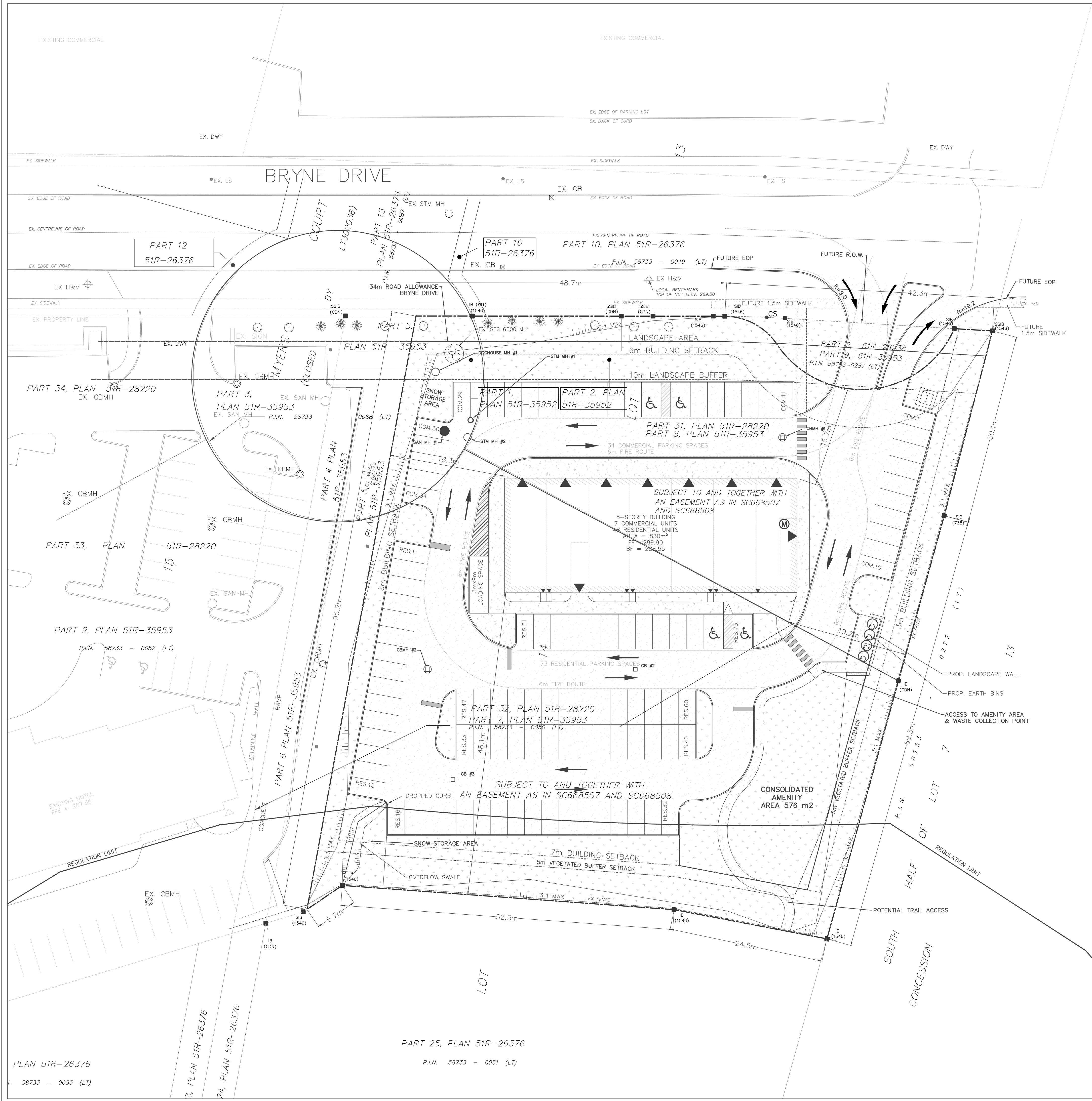
- EXISTING HYDRO TRANSFORMER
- SERVICE CAP
- EXISTING FIRE HYDRANT
- PROPOSED FIRE HYDRANT
- EXISTING WATER VALVE
- PROPOSED WATER VALVE
- EXISTING CURB STOP
- PROPOSED CURB STOP

- PROPOSED SIGN
- EXISTING LIGHT POLE
- MANDOOR
- OVERHEAD DOOR
- FIRE DEPT CONNECTION

- LANDSCAPE AREA
- ASPHALT AREA
- CONCRETE AREA
- ELECTRICAL ROOM
- WATER METER LOCATION
- PROPOSED TRANSFORMER

PROPOSED BUILDING		
General Commercial (Zone C4)	REQUIRED	PROVIDED
Lot Area (min.) m ²	450m ²	7889.0
Lot Frontage (min.)	15m	91m
Front Yard (min.)	6m	15.7
Side Yard (min.)	3m	19.2
Side Yard (min.)	3m	18.3
Rear Yard (min.)	7m	48.1
Lot Coverage (max.)	50%	10.55%
Building Area (m ²)		830
Building Height (max.)	14m	18.59
GFA	3856 m ²	20%
		20.33%
Parking Spaces (min.)	Commercial	33.0
	Residential	72.0
Parking Aisle Width (min.)		6.4m
Parking Standards (min.)	2.7m x 5.5m	2.7m x 5.5m
Barrier Free Parking	0	4
Loading Spaces (min.)	0	1
Landscape Area (m ²)		2787.3
Landscape Area - Future (m ²)		109.4
Dwelling Unit Floor Area (1BR) (min.)	45m ² /UNIT	51m ² /UNIT

PARKING CALCULATIONS				
Description	Area (m ²)	Calculation	Stalls	
C4 COMMERCIAL	784	1/24m ²	32.7	33.0
C4 RESIDENTIAL	48 units	1.5	Per Unit	72.0
TOTAL	3856 m ²		104.7	105.0
Barrier Free Parking	105.0	2/51-91	2	2
Commercial GFA	784.0	0/1-999m ²	0	0
Combined Building GFA	3856	1/1000-2999m ²	1	1



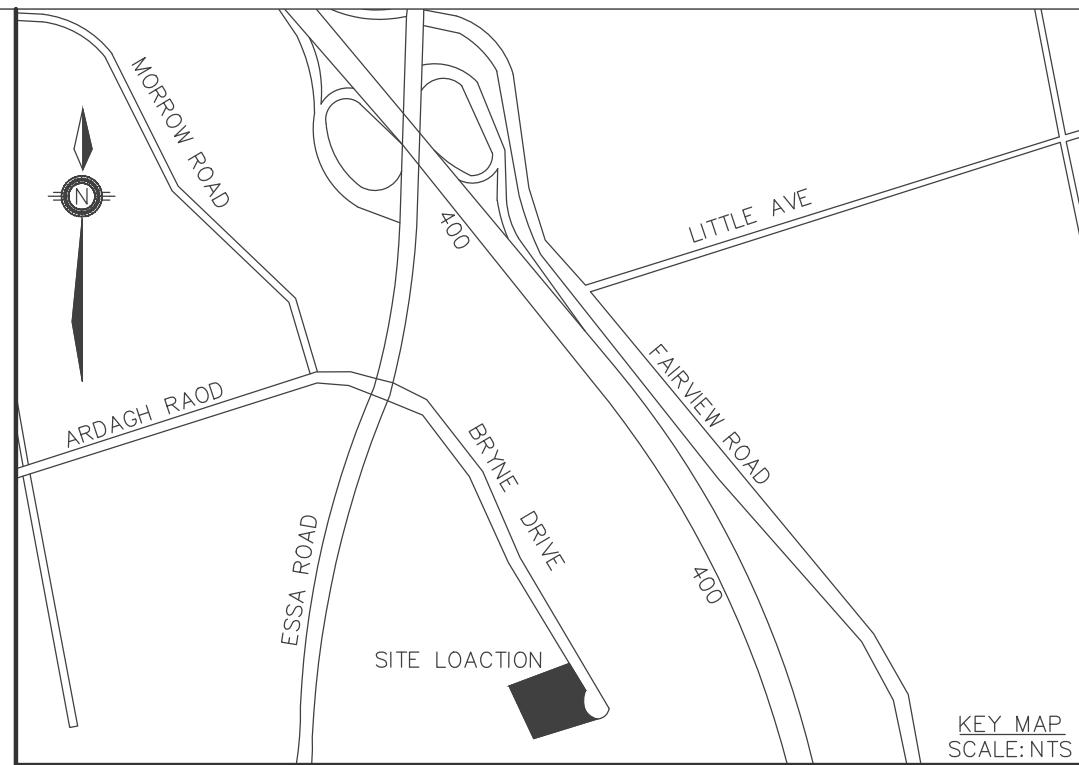
This drawing has been created electronically.

Handwritten or manual revisions to the drawing are only valid when accompanied by the design engineer's initials.

Do not scale drawings.
Check and verify all dimensions and information on the drawings and report all errors or omissions to the Consultant before proceeding with the work.
This drawing shall not be reproduced in any manner, in part or in whole, for any project other than that for which it was prepared.
This drawing, and all design concepts it contains, are an instrument of professional service and remain the property of Gerrits Engineering.

This drawing may have been reduced.

0 5 10 20 30 40 50mm
0" 1/4" 1/2" 1" 1 1/2" 2"



LEGEND

- EXISTING SANITARY MAINTENANCE HOLE
- PROPOSED SANITARY MAINTENANCE HOLE
- ⊠ EXISTING CATCH BASIN
- PROPOSED CATCH BASIN
- ⊠ EXISTING CATCH BASIN MAINTENANCE HOLE
- ⊠ PROPOSED CATCH BASIN MAINTENANCE HOLE
- ⊠ EXISTING STORM MAINTENANCE HOLE
- PROPOSED STORM MAINTENANCE HOLE

324.00 PROPOSED ELEVATION (T) (B) - DENOTES TOP OR BOTTOM OF WALL
324.00 EXISTING ELEVATION

1.6% PROPOSED GRADE

⊠ EXISTING HYDRO TRANSFORMER

⊠ SERVICE CAP

⊠ EXISTING FIRE HYDRANT

⊠ PROPOSED FIRE HYDRANT

⊠ EXISTING WATER VALVE

⊠ PROPOSED WATER VALVE

⊠ EXISTING CURB STOP

⊠ PROPOSED CURB STOP

1 PROPOSED SIGN

● EXISTING LIGHT POLE

▶ MANDOR

▽ OVERHEAD DOOR

⊠ FIRE DEPT CONNECTION

LANDSCAPE AREA

ASPHALT AREA

CONCRETE AREA

⊠ ELECTRICAL ROOM

⊠ WATER METER LOCATION

⊠ PROPOSED TRANSFORMER

HORIZONTAL CONTROL

ID# 03120040040

R.I.B. /w BRASS CAP. LOCATED ON THE NORTH SIDE OF ARDAGH, APPROX. 50m EAST OF PATTERSON RD. 1st HYDRO POLE ANCHOR. NORTHING=N4912365.421m, EASTING=E603187.237m

ID# 03120040033

R.I.B. /w BRASS CAP. LOCATED @ BACK OF SIDEWALK ON NORTHWEST CORNER OF ESSA RD. & LOGGERS RUN. NORTHING=N4912126.819m, EASTING=E603646.391m

VERTICAL CONTROL

ID# 68U500

BRASS TABLET. LOCATED ON HWY 400 OVERPASS OVER ESSA RD. SET IN NORTHEAST FACE OF NORTHEAST CONCRETE WALL (SOUTHERN ABUTMENT) 1.2m NORTHWEST FROM END OF ABUTMENT. 20.2m SOUTHEAST OF CENTRELINE OF ESSA RD., 180m BELOW TOP OF SIDEWALK AT THE HWY 400 LEVEL. HAVING AN NORTHING=N4912930m, EASTING=E603811m, ELEVATION=253.169m

ID# 97-68

BRASS TABLET. LOCATED ON CONC. BRIDGE CARRYING HWY 400 OVER ESSA RD. TABLET IS SET HORIZ. IN WEST FACE OF NORTH CONC. ABUTMENT, 3.84m SOUTH OF NORTHWEST CORNER, 24cm BELOW COPING & 9.0m WEST OF CENTRELINE OF HWY 400 SOUTHBOUND LANE. NORTHING=N4912906m, EASTING=E603786m, ELEVATION=252.723m

BENCHMARK: TOP NUT OF EX. HYDRANT HAVING AN ELEVATION OF 289.50

ISSUED FOR:

SITE PLAN APPROVAL

Client

DI GREGORIO

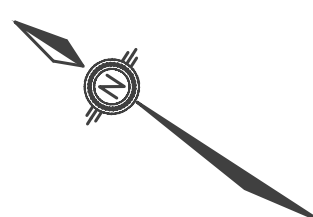
Project

76 BRYNE, DRIVE BARRIE, ON

Drawing:

SITE GRADING PLAN

Project No.	899-001-17	Designed by:	AC	Checked by:	KF
Scale:	1:300	Drawn by:	AC	Approved by:	PMD
Orientation	Stamp				



Drawing No.

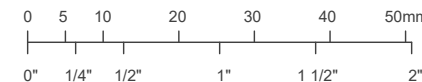
SG-1

This drawing has been created electronically.

Handwritten or manual revisions to the drawing are only valid when accompanied by the design engineer's initials.

Do not scale drawings.
Check and verify all dimensions and information on the drawings and report all errors or omissions to the Consultant before proceeding with the work.
This drawing shall not be reproduced in any manner, in part or in whole, for any project other than that for which it was prepared.
This drawing, and all design concepts it contains, are an instrument of professional service and remain the property of Gerrits Engineering.

This drawing may have been reduced.



No.	Issuance Description	YY/MM/DD
1.	SITE PLAN APPROVAL	20/07/22
2.		

HORIZONTAL CONTROL

ID# 03120040040

R.I.B. /w BRASS CAP. LOCATED ON THE NORTH SIDE OF ARDAGH, APPROX. 50m EAST OF PATTERSON RD. @ 1st HYDRO POLE ANCHOR.
NORTHING=N4912365.421m, EASTING=E603187.237m

ID# 03120040033

R.I.B. /w BRASS CAP. LOCATED @ BACK OF SIDEWALK ON NORTHWEST CORNER OF ESSA RD. & LOGGERS RUN.
NORTHING=N4912126.819m, EASTING=E603646.391m

VERTICAL CONTROL

ID# 68U500

BRASS TABLET. LOCATED ON HWY 400 OVERPASS OVER ESSA RD., SET IN NORTHEAST FACE OF NORTHEAST CONCRETE WALL (SOUTHERN ABUTMENT) 1.2m NORTHWEST FROM END OF ABUTMENT, 20.2m SOUTHEAST OF CENTRELINE OF ESSA RD., 180m BELOW TOP OF SIDEWALK AT THE HWY 400 LEVEL, HAVING AN NORTHING=N4912930m, EASTING=E603811m, ELEVATION=253.169m

ID# 97-68

BRASS TABLET. LOCATED ON CONC. BRIDGE CARRYING HWY 400 OVER ESSA RD. TABLET IS SET HORIZ. IN WEST FACE OF NORTH CONC. ABUTMENT, 3.84m SOUTH OF NORTHWEST CORNER, 24cm BELOW COPING & 9.0m WEST OF CENTRELINE OF HWY 400 SOUTHBOUND LANE.
NORTHING=N4912906m, EASTING=E603786m, ELEVATION=252.723m

ISSUED FOR:

SITE PLAN APPROVAL

Client

DI GREGORIO

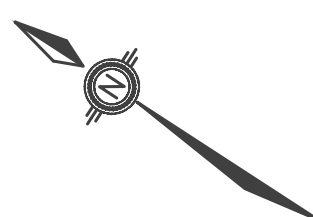
Project

76 BRYNE, DRIVE BARRIE, ON

Drawing:

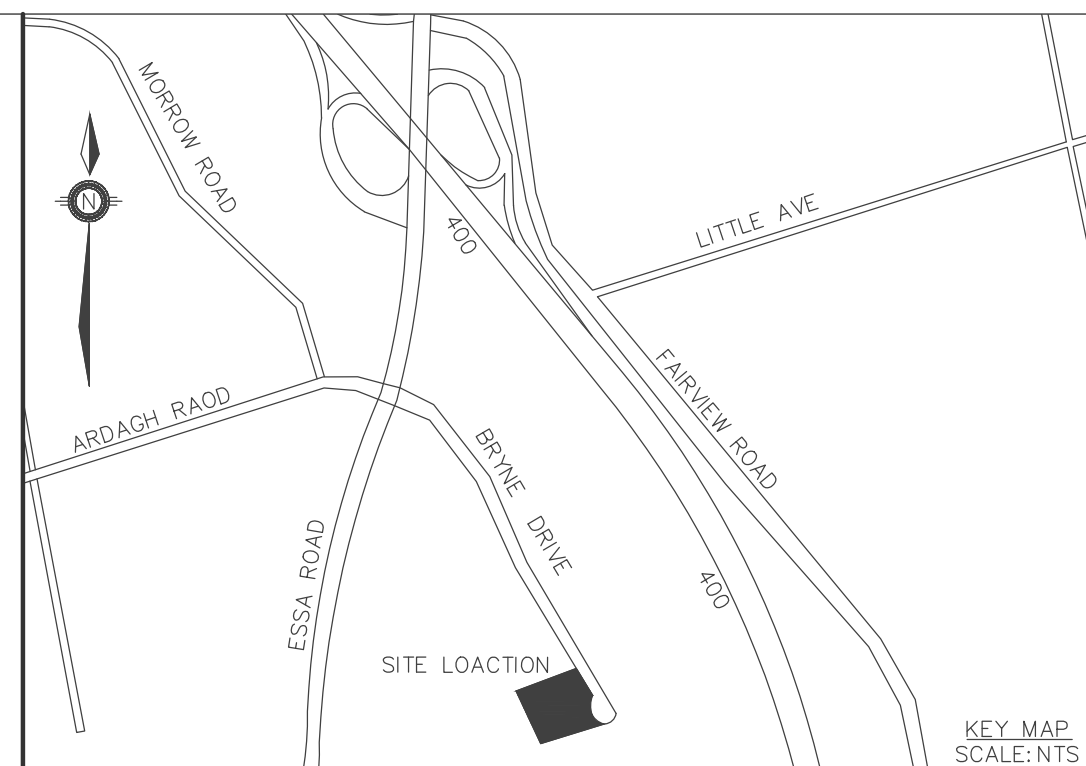
SITE SERVICING PLAN

Project No.	899-001-17	Designed by:	AC	Checked by:	KF
Scale:	1:300	Drawn by:	AC	Approved by:	PMD
Orientation	Stamp				



Drawing No.

SS-1



LEGEND

- EXISTING SANITARY MAINTENANCE HOLE
- PROPOSED SANITARY MAINTENANCE HOLE
- ⊠ EXISTING CATCH BASIN
- PROPOSED CATCH BASIN
- ⊠ EXISTING CATCH BASIN MAINTENANCE HOLE
- ⊠ PROPOSED CATCH BASIN MAINTENANCE HOLE
- ⊠ EXISTING STORM MAINTENANCE HOLE
- PROPOSED STORM MAINTENANCE HOLE

324.00 PROPOSED ELEVATION
324.00 EXISTING ELEVATION

1.6% PROPOSED GRADE

⊠ EXISTING HYDRO TRANSFORMER

⊠ SERVICE CAP

⊠ EXISTING FIRE HYDRANT

⊠ PROPOSED FIRE HYDRANT

⊠ EXISTING WATER VALVE

⊠ PROPOSED WATER VALVE

⊠ EXISTING CURB STOP

⊠ PROPOSED CURB STOP

⊠ PROPOSED SIGN

⊠ EXISTING LIGHT POLE

▶ MANDOR

▷ OVERHEAD DOOR

⊠ FIRE DEPT CONNECTION

LANDSCAPE AREA

ASPHALT AREA

CONCRETE AREA

⊠ ELECTRICAL ROOM

⊠ MECHANICAL ROOM

⊠ PROPOSED TRANSFORMER

⊠ ELECTRICAL ROOM

⊠ MECHANICAL ROOM

⊠ PROPOSED TRANSFORMER

⊠ ELECTRICAL ROOM

⊠ MECHANICAL ROOM

⊠ PROPOSED TRANSFORMER

⊠ ELECTRICAL ROOM

⊠ MECHANICAL ROOM

⊠ PROPOSED TRANSFORMER

⊠ ELECTRICAL ROOM

⊠ MECHANICAL ROOM

⊠ PROPOSED TRANSFORMER

⊠ ELECTRICAL ROOM

⊠ MECHANICAL ROOM

⊠ PROPOSED TRANSFORMER

⊠ ELECTRICAL ROOM

⊠ MECHANICAL ROOM

⊠ PROPOSED TRANSFORMER

⊠ ELECTRICAL ROOM

⊠ MECHANICAL ROOM

⊠ PROPOSED TRANSFORMER

⊠ ELECTRICAL ROOM

⊠ MECHANICAL ROOM

⊠ PROPOSED TRANSFORMER

⊠ ELECTRICAL ROOM

⊠ MECHANICAL ROOM

⊠ PROPOSED TRANSFORMER

⊠ ELECTRICAL ROOM

⊠ MECHANICAL ROOM

⊠ PROPOSED TRANSFORMER

⊠ ELECTRICAL ROOM

⊠ MECHANICAL ROOM

⊠ PROPOSED TRANSFORMER

⊠ ELECTRICAL ROOM

⊠ MECHANICAL ROOM

⊠ PROPOSED TRANSFORMER

⊠ ELECTRICAL ROOM

⊠ MECHANICAL ROOM

⊠ PROPOSED TRANSFORMER

⊠ ELECTRICAL ROOM

⊠ MECHANICAL ROOM

⊠ PROPOSED TRANSFORMER

⊠ ELECTRICAL ROOM

⊠ MECHANICAL ROOM

⊠ PROPOSED TRANSFORMER

⊠ ELECTRICAL ROOM

⊠ MECHANICAL ROOM

⊠ PROPOSED TRANSFORMER

⊠ ELECTRICAL ROOM

⊠ MECHANICAL ROOM

⊠ PROPOSED TRANSFORMER

⊠ ELECTRICAL ROOM

⊠ MECHANICAL ROOM

⊠ PROPOSED TRANSFORMER

⊠ ELECTRICAL ROOM

⊠ MECHANICAL ROOM

⊠ PROPOSED TRANSFORMER

⊠ ELECTRICAL ROOM

⊠ MECHANICAL ROOM

⊠ PROPOSED TRANSFORMER

⊠ ELECTRICAL ROOM

⊠ MECHANICAL ROOM

⊠ PROPOSED TRANSFORMER

⊠ ELECTRICAL ROOM

⊠ MECHANICAL ROOM

⊠ PROPOSED TRANSFORMER

⊠ ELECTRICAL ROOM

⊠ MECHANICAL ROOM

⊠ PROPOSED TRANSFORMER

⊠ ELECTRICAL ROOM

⊠ MECHANICAL ROOM

⊠ PROPOSED TRANSFORMER

⊠ ELECTRICAL ROOM

⊠ MECHANICAL ROOM

⊠ PROPOSED TRANSFORMER

⊠ ELECTRICAL ROOM

⊠ MECHANICAL ROOM

⊠ PROPOSED TRANSFORMER

⊠ ELECTRICAL ROOM

⊠ MECHANICAL ROOM

⊠ PROPOSED TRANSFORMER

⊠ ELECTRICAL ROOM

⊠ MECHANICAL ROOM

⊠ PROPOSED TRANSFORMER

⊠ ELECTRICAL ROOM

⊠ MECHANICAL ROOM

⊠ PROPOSED TRANSFORMER

⊠ ELECTRICAL ROOM

⊠ MECHANICAL ROOM

⊠ PROPOSED TRANSFORMER

⊠ ELECTRICAL ROOM

⊠ MECHANICAL ROOM

⊠ PROPOSED TRANSFORMER

⊠ ELECTRICAL ROOM

⊠ MECHANICAL ROOM

⊠ PROPOSED TRANSFORMER

⊠ ELECTRICAL ROOM

⊠ MECHANICAL ROOM

⊠ PROPOSED TRANSFORMER

⊠ ELECTRICAL ROOM

⊠ MECHANICAL ROOM

⊠ PROPOSED TRANSFORMER

⊠ ELECTRICAL ROOM

⊠ MECHANICAL ROOM

⊠ PROPOSED TRANSFORMER

⊠ ELECTRICAL ROOM

⊠ MECHANICAL ROOM

⊠ PROPOSED TRANSFORMER

⊠ ELECTRICAL ROOM

⊠ MECHANICAL ROOM

⊠ PROPOSED TRANSFORMER

⊠ ELECTRICAL ROOM

⊠ MECHANICAL ROOM

⊠ PROPOSED TRANSFORMER

⊠ ELECTRICAL ROOM

⊠ MECHANICAL ROOM

⊠ PROPOSED TRANSFORMER

⊠ ELECTRICAL ROOM

⊠ MECHANICAL ROOM

⊠ PROPOSED TRANSFORMER

⊠ ELECTRICAL ROOM

⊠ MECHANICAL ROOM

⊠ PROPOSED TRANSFORMER

⊠ ELECTRICAL ROOM

⊠ MECHANICAL ROOM

⊠ PROPOSED TRANSFORMER

⊠ ELECTRICAL ROOM

⊠ MECHANICAL ROOM

⊠ PROPOSED TRANSFORMER

⊠ ELECTRICAL ROOM

⊠ MECHANICAL ROOM

⊠ PROPOSED TRANSFORMER

⊠ ELECTRICAL ROOM

⊠ MECHANICAL ROOM

⊠ PROPOSED TRANSFORMER

⊠ ELECTRICAL ROOM

⊠ MECHANICAL ROOM

⊠ PROPOSED TRANSFORMER

⊠ ELECTRICAL ROOM

⊠ MECHANICAL ROOM

⊠ PROPOSED TRANSFORMER

⊠ ELECTRICAL ROOM

⊠ MECHANICAL ROOM

⊠ PROPOSED TRANSFORMER

⊠ ELECTRICAL ROOM

⊠ MECHANICAL ROOM

⊠ PROPOSED TRANSFORMER

⊠ ELECTRICAL ROOM

⊠ MECHANICAL ROOM

⊠ PROPOSED TRANSFORMER

⊠ ELECTRICAL ROOM

⊠ MECHANICAL ROOM

⊠ PROPOSED TRANSFORMER

⊠ ELECTRICAL ROOM

⊠ MECHANICAL ROOM

⊠ PROPOSED TRANSFORMER

⊠ ELECTRICAL ROOM

⊠ MECHANICAL ROOM

⊠ PROPOSED TRANSFORMER

⊠ ELECTRICAL ROOM

⊠ MECHANICAL ROOM

⊠ PROPOSED TRANSFORMER

⊠ ELECTRICAL ROOM

⊠ MECHANICAL ROOM

⊠ PROPOSED TRANSFORMER

⊠ ELECTRICAL ROOM

⊠ MECHANICAL ROOM

⊠ PROPOSED TRANSFORMER

⊠ ELECTRICAL ROOM

⊠ MECHANICAL ROOM

⊠ PROPOSED TRANSFORMER

⊠ ELECTRICAL ROOM

⊠ MECHANICAL ROOM

⊠ PROPOSED TRANSFORMER

⊠ ELECTRICAL ROOM

⊠ MECHANICAL ROOM

⊠ PROPOSED TRANSFORMER

⊠ ELECTRICAL ROOM

⊠ MECHANICAL ROOM

⊠ PROPOSED TRANSFORMER

⊠ ELECTRICAL ROOM

⊠ MECHANICAL ROOM

⊠ PROPOSED TRANSFORMER

⊠ ELECTRICAL ROOM

⊠ MECHANICAL ROOM

⊠ PROPOSED TRANSFORMER

⊠ ELECTRICAL ROOM

⊠ MECHANICAL ROOM

⊠ PROPOSED TRANSFORMER

⊠ ELECTRICAL ROOM

⊠ MECHANICAL ROOM

⊠ PROPOSED TRANSFORMER

⊠ ELECTRICAL ROOM

⊠ MECHANICAL ROOM

⊠ PROPOSED TRANSFORMER

⊠ ELECTRICAL ROOM

⊠ MECHANICAL ROOM

⊠ PROPOSED TRANSFORMER

⊠ ELECTRICAL ROOM

⊠ MECHANICAL ROOM

⊠ PROPOSED TRANSFORMER

⊠ ELECTRICAL ROOM

⊠ MECHANICAL ROOM

⊠ PROPOSED TRANSFORMER

⊠ ELECTRICAL ROOM

⊠ MECHANICAL ROOM

⊠ PROPOSED TRANSFORMER

⊠ ELECTRICAL ROOM

⊠ MECHANICAL ROOM

⊠ PROPOSED TRANSFORMER

⊠ ELECTRICAL ROOM

⊠ MECHANICAL ROOM

⊠ PROPOSED TRANSFORMER

⊠ ELECTRICAL ROOM

⊠ MECHANICAL ROOM

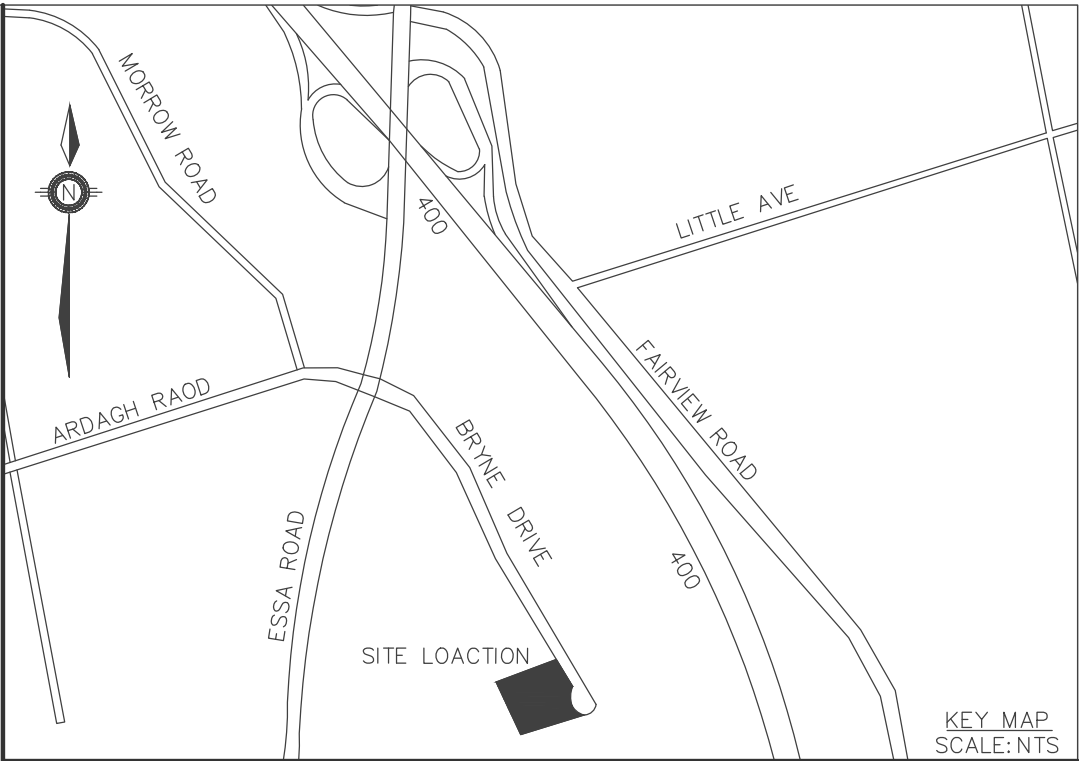
⊠ PROPOSED TRANSFORMER

⊠ ELECTRICAL ROOM

⊠ MECHANICAL ROOM

⊠ PROPOSED TRANSFORMER

⊠ ELECTRICAL ROOM



This drawing has been created electronically.
Handwritten or manual revisions to the drawing are only valid when accompanied by the design engineer's initials.

Do not scale drawings.
Check and verify all dimensions and information on the drawings and report all errors or omissions to the Consultant before proceeding with the work.
This drawing shall not be reproduced in any manner, in part or in whole, for any project other than that for which it was prepared.
this drawing, and all design concepts it contains, are an instrument of professional service and remain the property of Gerrits Engineering.

This drawing may have been reduced.
0 5 10 20 30 40 50mm
0" 1/4" 1/2" 1" 1 1/2" 2"

LEGEND

- EXISTING SANITARY MAINTENANCE HOLE
- PROPOSED SANITARY MAINTENANCE HOLE
- ☒ EXISTING CATCH BASIN
- PROPOSED CATCH BASIN
- ☒ EXISTING CATCH BASIN MAINTENANCE HOLE
- ⊞ PROPOSED CATCH BASIN MAINTENANCE HOLE
- ⊗ EXISTING STORM MAINTENANCE HOLE
- PROPOSED STORM MAINTENANCE HOLE

⊞ PROPOSED TRANSFORMER

324.00 PROPOSED ELEVATION
*324.00 EXISTING ELEVATION

1.6% PROPOSED GRADE

⊞ EXISTING HYDRO TRANSFORMER

— SERVICE CAP

⊕ EXISTING FIRE HYDRANT

◆ PROPOSED FIRE HYDRANT

⊗ EXISTING WATER VALVE

⊗ PROPOSED WATER VALVE

⊞ EXISTING CURB STOP

⊞ PROPOSED CURB STOP

1 PROPOSED SIGN

● EXISTING LIGHT POLE

► MANDOOK

▷ OVERHEAD DOOR

— FIRE DEPT CONNECTION

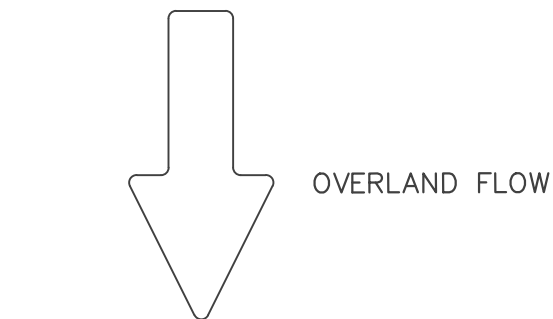
⊞ ELECTRICAL ROOM

⊞ MECHANICAL ROOM

ID P-2 0.75 RUNOFF COEFFICIENT

5.55

AREA (ha)



HORIZONTAL CONTROL

ID# 03120040040
R.I.B. /w BRASS CAP. LOCATED ON THE NORTH SIDE OF ARDAGH, APPROX. 50m EAST OF PATTERSON RD. 1st HYDRO POLE ANCHOR.
NORTHING=N4912365.421m, EASTING=E603187.237m

ID# 03120040033
R.I.B. /w BRASS CAP. LOCATED @ BACK OF SIDEWALK ON NORTHWEST CORNER OF ESSA RD. & LOGGERS RUN.
NORTHING=N4912126.819m, EASTING=E603646.391m

VERTICAL CONTROL

ID# 68U500
BRASS TABLET. LOCATED ON HWY 400 OVERPASS OVER ESSA RD., SET IN NORTHEAST FACE OF NORTHEAST CONCRETE WALL (SOUTHERN ABUTMENT) 1.2m NORTHWEST FROM END OF ABUTMENT, 20.2m SOUTHEAST OF CENTRELINE OF ESSA RD., 18cm BELOW TOP OF SIDEWALK AT THE HWY 400 LEVEL, HAVING AN NORTHING=N4912930m, EASTING=E603811m, ELEVATION=253.169m

ID# 97-68
BRASS TABLET. LOCATED ON CONC. BRIDGE CARRYING HWY 400 OVER ESSA RD. TABLET IS SET HORIZ. IN WEST FACE OF NORTH CONC. ABUTMENT, 3.84m SOUTH OF NORTHWEST CORNER, 24cm BELOW COPING & 9.0m WEST OF CENTRELINE OF HWY 400 SOUTHBOUND LANE.
NORTHING=N4912906m, EASTING=E603786m, ELEVATION=252.723m

ISSUED FOR:

SITE PLAN APPROVAL

Client

DI GREGORIO

Project

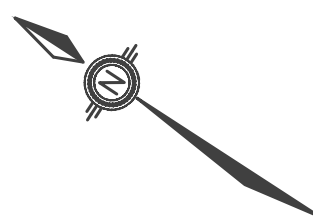
76 BRYNE, DRIVE BARRIE, ON

Drawing:

PRE-DEVELOPMENT STORMWATER MANAGEMENT PLAN

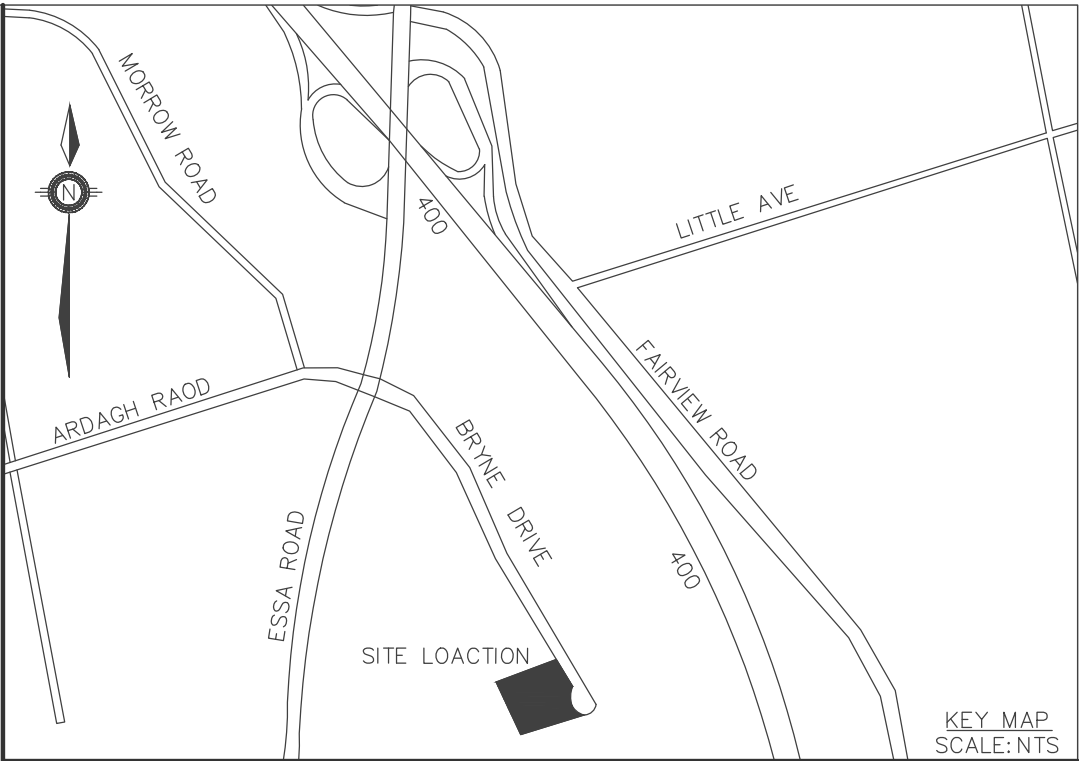
Project No.	899-001-17	Designed by:	AC	Checked by:	KF
Scale:	1:400	Drawn by:	AC	Approved by:	PMD

Orientation Stamp



Drawing No.

STM-1

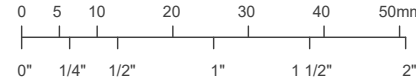


This drawing has been created electronically.

Handwritten or manual revisions to the drawing are only valid when accompanied by the design engineer's initials.

Do not scale drawings.
Check and verify all dimensions and information on the drawings and report all errors or omissions to the Consultant before proceeding with the work.
This drawing shall not be reproduced in any manner, in part or in whole, for any project other than that for which it was prepared.
This drawing, and all design concepts it contains, are an instrument of professional service and remain the property of Gerrits Engineering.

This drawing may have been reduced.



LEGEND

- EXISTING SANITARY MAINTENANCE HOLE
- PROPOSED SANITARY MAINTENANCE HOLE
- ☒ EXISTING CATCH BASIN
- PROPOSED CATCH BASIN
- ⊗ EXISTING CATCH BASIN MAINTENANCE HOLE
- ⊕ PROPOSED CATCH BASIN MAINTENANCE HOLE
- ⊗ EXISTING STORM MAINTENANCE HOLE
- PROPOSED STORM MAINTENANCE HOLE

T PROPOSED TRANSFORMER

324.00 PROPOSED ELEVATION
*324.00 EXISTING ELEVATION

1.6% PROPOSED GRADE

⚡ EXISTING HYDRO TRANSFORMER

— SERVICE CAP

⊕ EXISTING FIRE HYDRANT

◆ PROPOSED FIRE HYDRANT

⊗ EXISTING WATER VALVE

⊕ EXISTING WATER VALVE

EX.CS EXISTING CURB STOP

CS PROPOSED CURB STOP

— PROPOSED SIGN

● EXISTING LIGHT POLE

► MANDOOR

▷ OVERHEAD DOOR

— FIRE DEPT CONNECTION

E ELECTRICAL ROOM

M MECHANICAL ROOM

↓ OVERLAND FLOW

ID RUNOFF COEFFICIENT
P-2 0.75
5.55
AREA (ha)

HORIZONTAL CONTROL

ID# 03120040040

R.I.B. /w BRASS CAP. LOCATED ON THE NORTH SIDE OF ARDAGH, APPROX. 50m EAST OF PATTERSON RD. @ 1st HYDRO POLE ANCHOR.
NORTHING=N4912365.421m, EASTING=E603187.237m

ID# 03120040033

R.I.B. /w BRASS CAP. LOCATED @ BACK OF SIDEWALK ON NORTHWEST CORNER OF ESSA RD. & LOGGERS RUN.
NORTHING=N4912126.819m, EASTING=E603646.391m

VERTICAL CONTROL

ID# 68U500

BRASS TABLET. LOCATED ON HWY 400 OVERPASS OVER ESSA RD., SET IN NORTHEAST FACE OF NORTHEAST CONCRETE WALL (SOUTHERN ABUTMENT) 1.2m NORTHWEST FROM END OF ABUTMENT, 20.2m SOUTHEAST OF CENTRELINE OF ESSA RD., 180m BELOW TOP OF SIDEWALK AT THE HWY 400 LEVEL, HAVING AN NORTHING=N4912930m, EASTING=E603811m, ELEVATION=253.169m

ID# 97-68

BRASS TABLET. LOCATED ON CONC. BRIDGE CARRYING HWY 400 OVER ESSA RD. TABLET IS SET HORIZ. IN WEST FACE OF NORTH CONC. ABUTMENT, 3.84m SOUTH OF NORTHWEST CORNER, 24cm BELOW COPING & 9.0m WEST OF CENTRELINE OF HWY 400 SOUTHBOUND LANE.
NORTHING=N4912906m, EASTING=E603786m, ELEVATION=252.723m

ISSUED FOR:

SITE PLAN APPROVAL

Client

DI GREGORIO

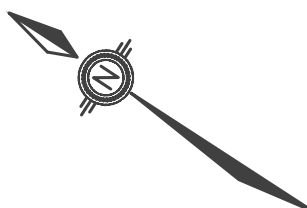
Project

76 BRYNE, DRIVE BARRIE, ON

Drawing:

POST-DEVELOPMENT STORMWATER MANAGEMENT PLAN

Project No.	899-001-17	Designed by:	AC	Checked by:	KF
Scale:	1:400	Drawn by:	AC	Approved by:	PMD
Orientation	Stamp				



Drawing No.

STM-2

NOTES FOR SEDIMENT & EROSION CONTROL

1. DISTURBED AREAS THAT HAVE FAILED TO HAVE STABLE GROUND COVER ESTABLISHED BY OCTOBER 30TH SHALL BE PROTECTED WITH A SILTATION CONTROL FENCE OR STRAW MULCH ETC. AND MAINTAINED BY THE CONTRACTOR UNTIL VEGETATION BECOMES ESTABLISHED IN THE SUBSEQUENT GROWING SEASON.
2. ANY DEWATERING WASTE SHALL BE DISCHARGED TO A VEGETATED AREA AT LEAST 30 M FROM ANY WATERCOURSE AND FILTERED. FILTERING METHODS MUST BE APPROVED BY THE SITE ADMINISTRATOR.
3. SILT FENCE SHALL BE PUT IN PLACE PRIOR TO AND MAINTAINED DURING ALL GRADING. SILT FENCE TO BE INSPECTED PRIOR TO COMMENCEMENT OF EARTH GRADING ACTIVITIES. SILT FENCE TO BE INSPECTED AND REPAIRED OR REPLACED IF DAMAGED AS DIRECTED BY THE SITE ADMINISTRATOR. SILT CONTROLS TO BE INSPECTED ON A REGULAR BASIS AND AFTER EVERY RAIN EVENT. INSTALLATION SHALL BE TO THE MANUFACTURER'S SUGGESTED SPECIFICATIONS.
4. THE CONTRACTOR SHALL BE PREPARED FOR UNEXPECTED CONDITIONS AND ACCORDINGLY HAVE STOCKPILED MATERIALS ON SITE FOR NECESSARY REPAIRS AS A RESULT OF FAILED OR INADEQUATE CONTROL MEASURES. ALL SEDIMENT AND EROSION CONTROL MEASURES SHALL BE INSPECTED AT LEAST ONCE A WEEK, AND AFTER EVERY RAINFALL EVENT.
5. MUD MATS REQUIRED WHERE CONSTRUCTION TRAFFIC ENTERS OR LEAVES THE SITE SHALL BE USED. MUD MATS TO CONSIST OF 300mm min. 100mm to 200mm CLEAR STONE HAVING DIMENSIONS 6.0m WIDE X 15.0m LONG.
6. CONTRACTOR SHALL OBTAIN A CURRENT COPY AND BECOME FAMILIAR WITH OPSS 577, CONSTRUCTION SPECIFICATION FOR TEMPORARY EROSION AND SEDIMENT CONTROL MEASURES AS WELL AS ALL APPLICABLE MUNICIPAL STANDARDS.
7. THE CONTRACTOR MAY CONSIDER ALTERNATIVE SEDIMENT AND EROSION CONTROL MEASURES. SUCH MEASURES SHOULD BE PRESENTED IN WRITING FOR APPROVAL OF THE SITE ADMINISTRATOR AND MUST BE APPROVED IN WRITING BY THE CONSERVATION AUTHORITY.
8. THE TOPS OF ALL FILTER FABRIC MUST BE A MINIMUM OF 1.0 METRES ABOVE THE GROUND LEVEL AND ATTACHED TO THE FENCE WITH A CONTINUOUS STEEL WIRE. ALTERNATIVELY, THE FILTER FABRIC MUST BE FOLDED OVER THE TOP OF THE FENCE AND ATTACHED TO THE FENCE WITH WIRE LOOPED THROUGH THE FABRIC ON BOTH SIDES OF THE FENCE. FILTER FABRIC IS TO BE TERRAFIX 270R OR EQUIVALENT.
9. ALL DISTURBED GROUND LEFT INACTIVE SHALL BE STABILIZED BY SEEDING, SOODING, MULCHING, OR COVERING OR OTHER EQUIVALENT CONTROL MEASURES. THIS PERIOD OF INACTIVITY SHALL BE AT THE DISCRETION OF THE MUNICIPAL DIRECTOR OF ENGINEERING BUT SHALL NOT EXCEED THIRTY DAYS OR SUCH LONGER PERIOD DEEMED ADVISABLE BY THE MUNICIPAL DIRECTOR OF ENGINEERING.
10. CONTRACTOR SHALL INSTALL AND MAINTAIN CATCH-BASIN SEDIMENT BARRIERS THROUGHOUT THE SITE DURING ALL CONSTRUCTION ACTIVITIES IN ORDER TO TRAP SEDIMENT.

SEQUENCE OF CONSTRUCTION

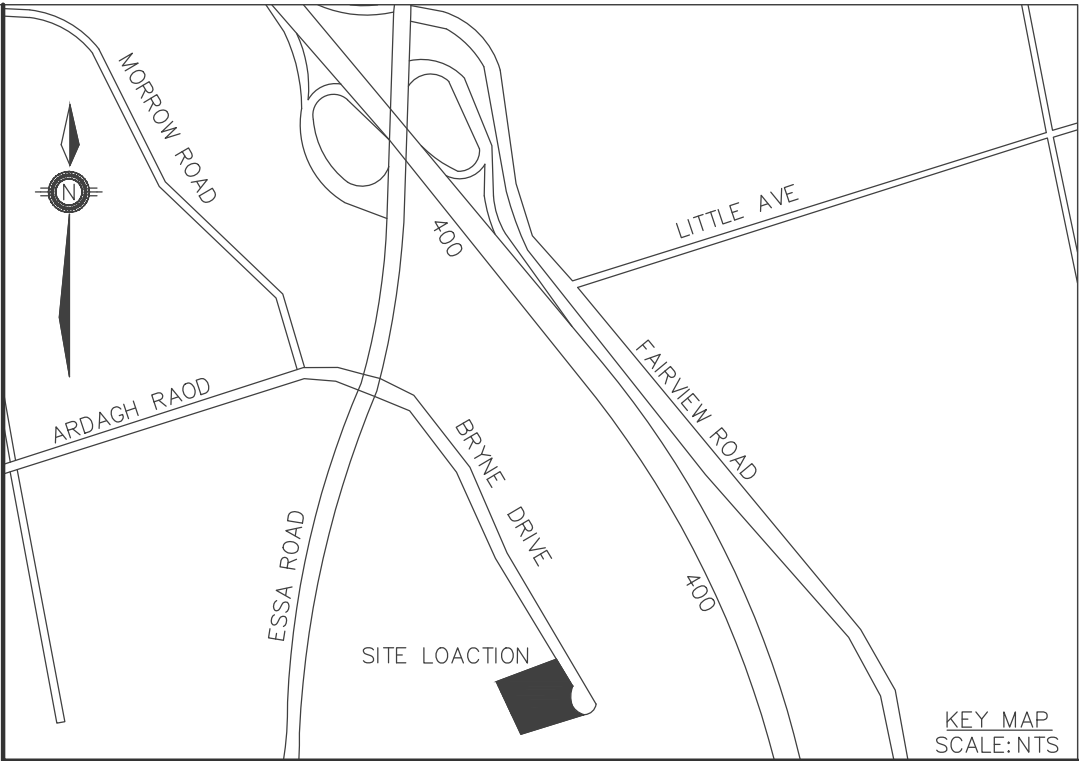
1. ENGINEER TO BE NOTIFIED PRIOR TO INITIATION OF ANY ON SITE WORKS.
2. SILT FENCE AND CONSTRUCTION ACCESS MATS TO BE INSTALLED PRIOR TO THE COMMENCEMENT OF ANY WORKS ON-SITE.
3. VEGETATION REMOVAL MAY COMMENCE AFTER ALL SILT FENCE IS INSTALLED AND APPROVED BY THE ENGINEER.
4. COMMENCE WITH EARTH EXCAVATION AND SITE SERVICING (TO BE REMOVED FROM SITE - NO STOCKPILE).
5. EROSION CONTROL MEASURES TO BE MAINTAINED AS DIRECTED BY THE ENGINEER DURING THE CONSTRUCTION PERIOD. ADDITIONAL CONTROL MEASURES MAY BE REQUIRED AT THE DISCRETION OF THE ENGINEER.
6. ALL DISTURBED GROUND LEFT INACTIVE FOR MORE THAN 30 DAYS SHALL BE STABILIZED WITH SEED, SOD, MULCH OR OTHER ADEQUATE COVERING, AS INSTRUCTED BY THE ENGINEER.

NO FUEL TO BE STORED ON SITE. IN CASE OF A SPILL PLEASE CONTACT: MOECC SPILLS ACTION CENTER 1-800-268-6060

THE ON-CALL CITY OF BARRIE ENVIRONMENTAL OFFICER SHALL ALSO BE NOTIFIED VIA PAGER (705) 720-5056 IN THE EVENT THE SPILL REACHES PUBLIC PROPERTY.

THE SEDIMENT CONTROLS ARE TO REMAIN IN PLACE UNTIL WRITTEN DIRECTION IS RECEIVED FROM THE ENGINEER REGARDING THEIR REMOVAL.

Site Area	7869 sq.m.
Area of Alteration	7869 sq.m.
Existing Land Use	Open Space
Adjoining Property Land Use	Commercial
Soil Type	- Sandy Loam (TIS)



LEGEND

- EXISTING SANITARY MAINTENANCE HOLE
- PROPOSED SANITARY MAINTENANCE HOLE
- ⊠ EXISTING CATCH BASIN
- PROPOSED CATCH BASIN
- ⊗ EXISTING CATCH BASIN MAINTENANCE HOLE
- ⊕ PROPOSED CATCH BASIN MAINTENANCE HOLE
- ⊗ EXISTING STORM MAINTENANCE HOLE
- PROPOSED STORM MAINTENANCE HOLE

324.00 PROPOSED ELEVATION
*324.07 EXISTING ELEVATION

1.6% PROPOSED GRADE

■ EXISTING HYDRO TRANSFORMER

— SERVICE CAP

◆ EXISTING FIRE HYDRANT

◆ PROPOSED FIRE HYDRANT

⊗ EXISTING WATER VALVE

⊕ PROPOSED WATER VALVE

⊗ EXISTING CURB STOP

⊕ PROPOSED CURB STOP

⊗ ROOF LEADER LOCATION

⊕ PROPOSED SIGN

● EXISTING LIGHT POLE

▶ MANDOOK

▷ OVERHEAD DOOR

⚡ FIRE DEPT CONNECTION

○ PROPOSED SILT FENCE

■ PROPOSED TRANSFORMER

Gerrits
ENGINEERING

222 Mapleview Drive West, Suite 300
Barrie, ON L4N 9E7 Canada
Tel.: 705.737.3303
Fax: 705.737.1772
www.gerriteng.com

This drawing has been created electronically.

Handwritten or manual revisions to the drawing are only valid when accompanied by the design engineer's initials.

Do not scale drawings. Check and verify all dimensions and information on the drawings and report all errors or omissions to the Consultant before proceeding with the work. This drawing shall not be reproduced in any manner, in part or in whole, for any project other than that for which it was prepared. This drawing, and all design concepts it contains, are an instrument of professional service and remain the property of Gerrits Engineering.

This drawing may have been reduced.

0 5 10 20 30 40 50mm
0" 1/4" 1/2" 1" 1 1/2" 2"

No.	Issuance Description	YY/MM/DD
1.	SITE PLAN APPROVAL	20/07/22
2.		

HORIZONTAL CONTROL

ID# 03120040040

R.I.B. /w BRASS CAP. LOCATED ON THE NORTH SIDE OF ARDAGH, APPROX. 50m EAST OF PATTERSON RD. 1st HYDRO POLE ANCHOR. NORTHING-N4912365.421m, EASTING-E603187.237m

ID# 03120040033

R.I.B. /w BRASS CAP. LOCATED @ BACK OF SIDEWALK ON NORTHWEST CORNER OF ESSA RD. & LOGGERS RUN. NORTHING-N4912126.819m, EASTING-E603566.391m

VERTICAL CONTROL

ID# 68U500

BRASS TABLET. LOCATED ON HWY 400 OVERPASS OVER ESSA RD., SET IN NORTHEAST FACE OF NORTHEAST CONCRETE WALL (SOUTHERN ABUTMENT) 1.2m NORTHWEST FROM END OF ABUTMENT, 20.2m SOUTHEAST OF CENTRELINE OF ESSA RD., 180m BELOW TOP OF SIDEWALK AT THE HWY 400 LEVEL. HAVING AN NORTHING-N4912930m, EASTING-E603811m, ELEVATION-253.169m

ID# 97-68

BRASS TABLET. LOCATED ON CONC. BRIDGE CARRYING HWY 400 OVER ESSA RD. TABLET IS SET HORIZ. IN WEST FACE OF NORTH CONC. ABUTMENT, 3.84m SOUTH OF NORTHWEST CORNER, 24cm BELOW COPING & 9.0m WEST OF CENTRELINE OF HWY 400 SOUTHBOUND. NORTHING-N4912906m, EASTING-E603786m, ELEVATION-252.723m

ISSUED FOR:

SITE PLAN APPROVAL

Client

DI GREGORIO

Project

76 BRYNE, DRIVE BARRIE, ON

Drawing:

EROSION CONTROL PLAN
&
REMOVALS PLAN

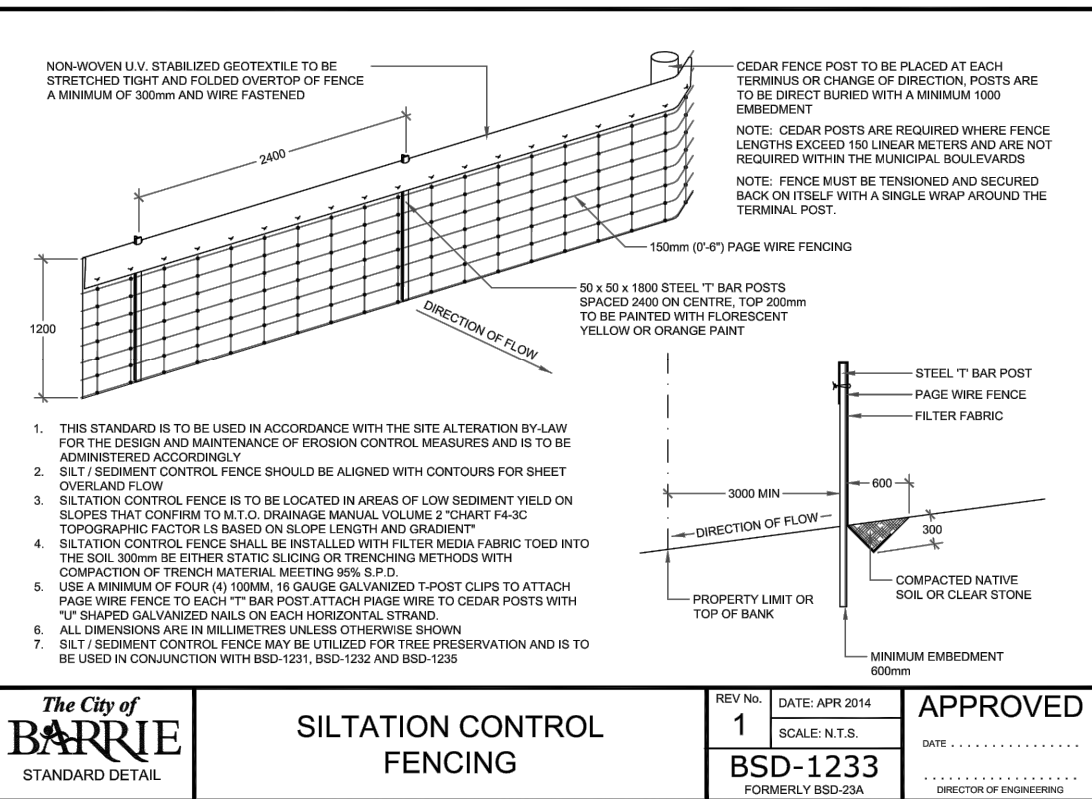
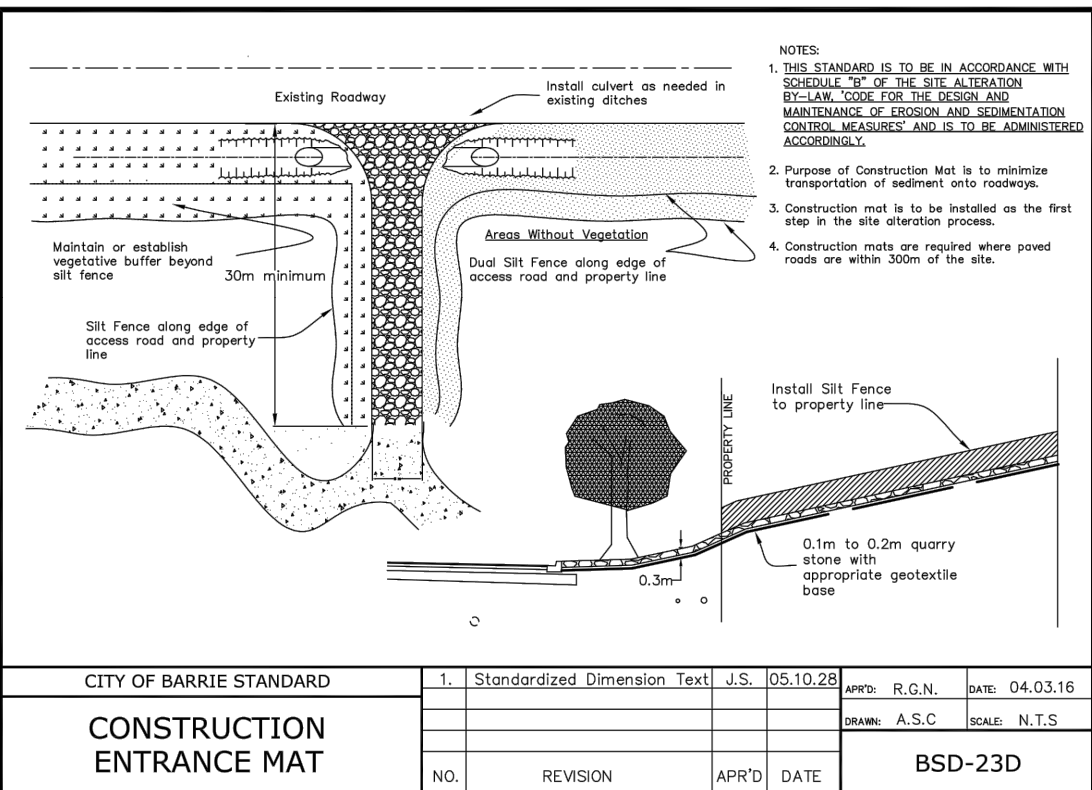
Project No. 899-001-17 Designed by: AC Checked by: KF
Scale: 1:400 Drawn by: AC Approved by: PMD

Orientation

Stamp

Drawing No.

EP-1

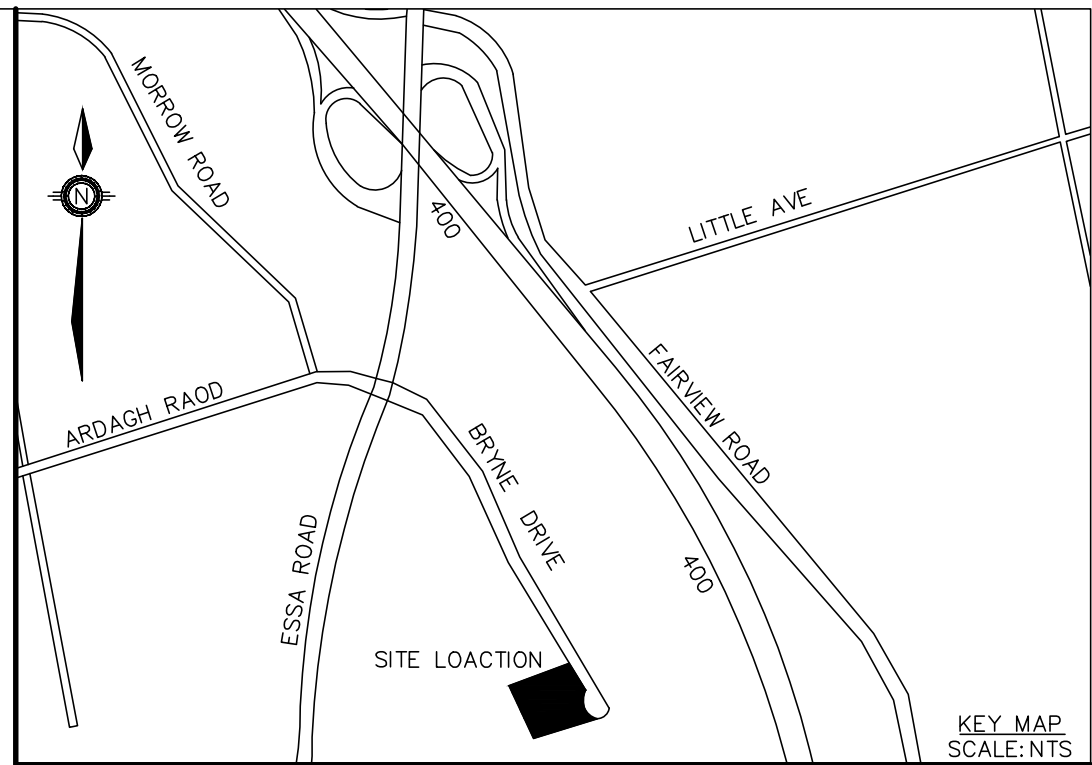
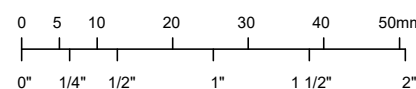


This drawing has been created electronically.

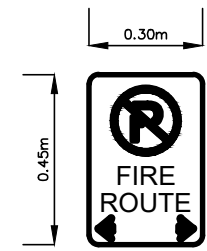
Handwritten or manual revisions to the drawing are only valid when accompanied by the design engineer's initials.

Do not scale drawings.
Check and verify all dimensions and information on the drawings and report all errors or omissions to the Consultant before proceeding with the work.
This drawing shall not be reproduced in any manner, in part or in whole, for any project other than that for which it was prepared.
This drawing, and all design concepts it contains, are an instrument of professional service and remain the property of Gerrits Engineering.

This drawing may have been reduced.

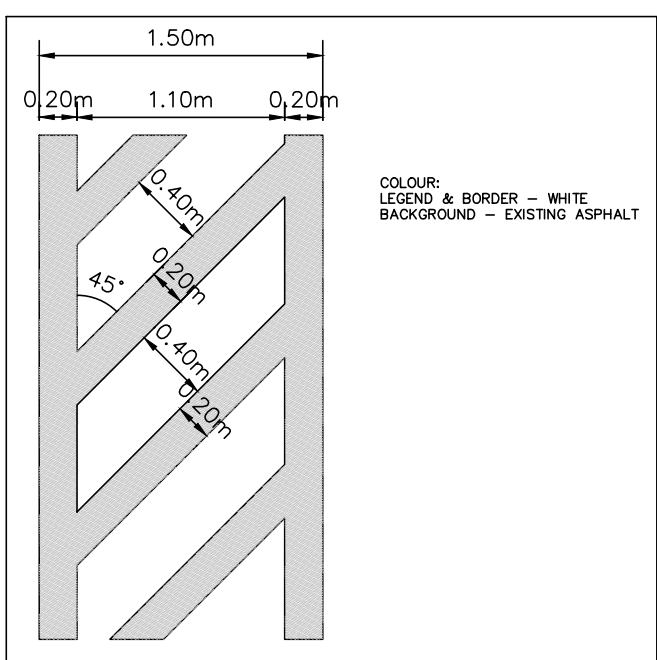


LEGEND

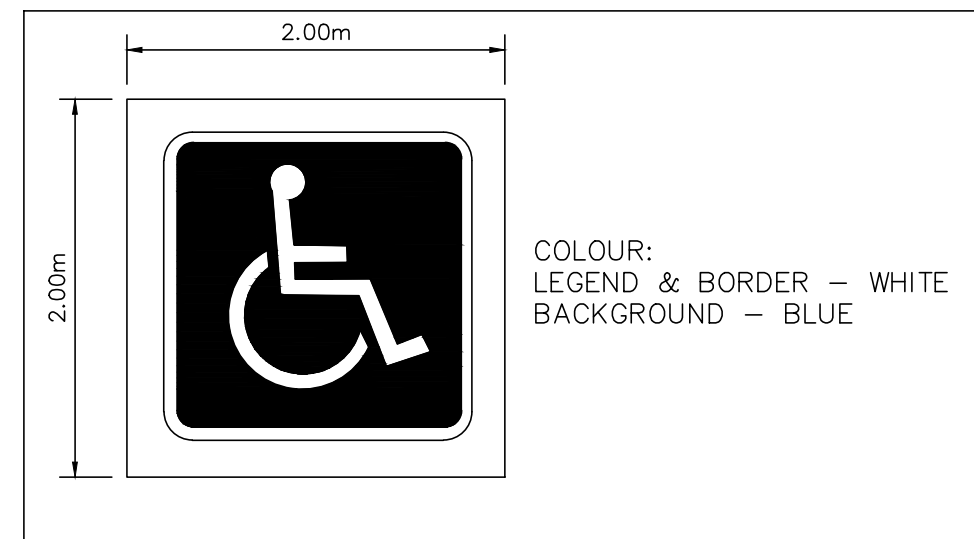


COLOUR:
RED CIRCLE & DIAGONAL - RED REFLECTIVE LETTERING
LEGEND & BORDER - BLACK
BACKGROUND - WHITE REFLECTIVE

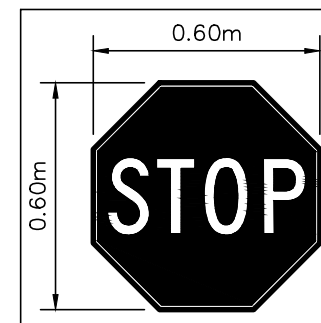
D1 FIRE ROUTE SIGN DETAIL



D2 ACCESSIBLE PARKING WALK DETAIL



D3 H.C. PAVEMENT MARKING DETAILS



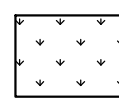
COLOUR:
LEGEND & BORDER - WHITE REFLECTIVE
BACKGROUND - RED REFLECTIVE

D4 STOP SIGN DETAIL



COLOUR:
LEGEND & BORDER - BLACK
BACKGROUND - WHITE REFLECTIVE
CIRCLE & LINE - RED REFLECTIVE
BARRIER FREE SYMBOL - BLUE REFLECTIVE

D5 BARRIER FREE PARKING SIGN DETAIL RB-93



LANDSCAPE AREA



ASPHALT AREA



CONCRETE AREA

HORIZONTAL CONTROL

ID# 03120040040

R.I.B. /w BRASS CAP. LOCATED ON THE NORTH SIDE OF ARDAGH, APPROX. 50m EAST OF PATTERSON RD. 1st HYDRO POLE ANCHOR.

NORTHING-N4912365.421m, EASTING-E603187.237m

ID# 03120040033

R.I.B. /w BRASS CAP. LOCATED @ BACK OF SIDEWALK ON NORTHWEST CORNER OF ESSA RD. & LOGGERS RUN.

NORTHING-N4912126.819m, EASTING-E603646.391m

VERTICAL CONTROL:

ID# 68U500

BRASS TABLET. LOCATED ON HWY 400 OVERPASS OVER ESSA RD. SET IN NORTHEAST FACE OF NORTHEAST CONCRETE WALL (SOUTHERN ABUTMENT) 1.2m NORTHWEST FROM END OF ABUTMENT. 20.2m SOUTHEAST OF CENTRELINE OF ESSA RD., 180m BELOW TOP OF SIDEWALK AT THE HWY 400 LEVEL.

HAVING AN NORTHING-N4912930m, EASTING-E603811m, ELEVATION-253.169m

ID# 97-68

BRASS TABLET. LOCATED ON CONC. BRIDGE CARRYING HWY 400 OVER ESSA RD. TABLET IS SET HORIZ. IN WEST FACE OF NORTH CONC. ABUTMENT, 3.84m SOUTH OF NORTHWEST CORNER, 24cm BELOW COPING & 9.0m WEST OF CENTRELINE OF HWY 400 SOUTHBOUND LANE.

NORTHING-N4912906m, EASTING-E603786m, ELEVATION-252.723m

ISSUED FOR:

SITE PLAN APPROVAL

Client

DI GREGORIO

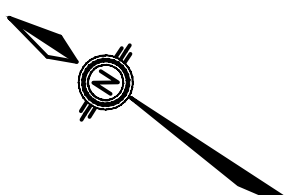
Project

76 BRYNE, DRIVE BARRIE, ON

Drawing:

PAVEMENT MARKING PLAN

Project No.	899-001-17	Designed by:	AC	Checked by:	KF
Scale:	1:300	Drawn by:	AC	Approved by:	PMD
Orientation	Stamp				



Drawing No.

PM-1