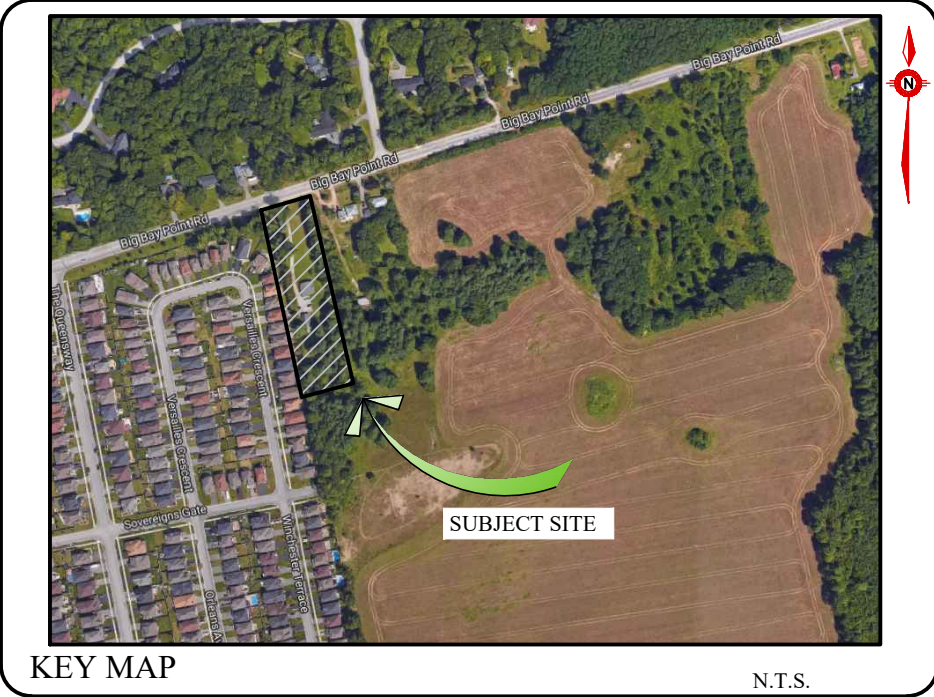


TREE INVENTORY 2017 SITE 'Z'									
Tree #	Nr. of trees	Botanical Name	Common name	DBH cm	Height m	Crown O (m)	Maturity	Health conditions	
1	1	<i>Quercus rubra</i>	Red Oak	70	15	10	Mature	Good / Fair	close to hydro lines
2	1	<i>Acer saccharum</i>	Sugar Maple	15	6	4	Immature	Fair	sucker from cut tree
3	5	<i>Pinus strobus</i>	White Pine	34	13	4	Mature	Fair	assymetric
4	1	<i>Tsuga canadensis</i>	Eastern Hemlock	30	15	10	Mature	Fair	
5	1	<i>Acer saccharum</i>	Sugar Maple	38	13	6	Mature	Fair / Good	assymetric
6	1	<i>Acer saccharum</i>	Sugar Maple	30	13	6	Mature	Fair / Good	forked @ base in 4 stems
7	1	<i>Prunus serotina</i>	Black Cherry	43	12	8	Mature	Fair / Poor	leaning, bark injuries
8	2	<i>Acer saccharum</i>	Sugar Maple	38,49	12	8	Mature	Fair	forked @ 1.4m
9	group	<i>Populus grandidentata</i> , <i>Acer saccharum</i> , <i>Tilia americana</i>	Large-tooth Aspen, Sugar Maple, Basswood	>15	10	3	Immature	Fair	
10	1	<i>Malus spp</i>	Apple	20	7	7	Mature	Fair	
11	2	<i>Populus grandidentata</i>	Large-tooth Aspen	16	10	3	Immature	Fair	forked @ base in 4 stems
12	1	<i>Tilia americana</i>	Basswood	18	10	3	Immature	Fair	
13	1	<i>Quercus rubra</i>	Red Oak	25	10	6	Mature	Good	
14	16	<i>Juniperus virginiana</i>	Eastern Red Cedar	30	13	7.5	Mature	Good / Fair	
15	1	<i>Pinus strobus</i>	White Pine	64	10	12	Mature	Fair	multiple leaders
16	1	<i>Acer saccharum</i>	Sugar Maple	14	8	5	Immature	Fair	forked @ base
17	1	<i>Quercus palustris</i>	Pin Oak	15	9	8	Immature	Fair	
18	1	<i>Acer saccharum</i>	Sugar Maple	15	6	5	Immature	Fair	
19	1	<i>Prunus serotina</i>	Black Cherry	35	10	6	Mature	Poor	1 dead trunk, leaning on adjacent site
20	1	<i>Pinus strobus</i>	White Pine	46	13	10	Mature	Good / Fair	forked @ base
21	2	<i>Pinus strobus</i>	White Pine	20,28	10	5	Mature	Fair	
22	1	<i>Fraxinus americana</i>	White Ash	20	12	7	Mature	Fair	forked @ base in 3 stems
23	1	<i>Pinus strobus</i>	White Pine	25	8	5	Mature	Fair	
24	1	<i>Prunus serotina</i>	Black Cherry	29	12	6	Mature	Poor	leaning, assymetric
25	1	<i>Pinus strobus</i>	White Pine	65	14	13	Mature	Fair / Poor	dead branches
26	1	<i>Fagus grandifolia</i>	American Beech	40	10	10	Mature	Fair / Good	
27	1	<i>Fraxinus americana</i>	White Ash	23	10	3	Mature	Fair / Good	
28	1	<i>Prunus serotina</i>	Black Cherry	2x40	12	12	Mature	Fair / Poor	forked in 2 @ 3m
29	1	<i>Tilia americana</i>	Basswood	35	12	10	Mature	Fair	forked in 3 @ 5m
30	1	<i>Acer saccharum</i>	Sugar Maple	70	14	16	Mature	Good / Fair	
31	1	<i>Quercus rubra</i>	Red Oak	20	11	9	Mature	Good	
32	1	<i>Quercus rubra</i>	Red Oak	20	11	9	Mature	Good	

PRESERVATION VALUES:
1 - BOUNDARY TREES LOCATED ON ADJACENT SITE OR SHARED TREES TO BE PROTECTED
2 - SPECIMEN TREES ON SITE RECOMMENDED TO BE PROTECTED
3 - SPECIMEN TREES ON SITE THAT MAY BE PROTECTED DEPENDING ON THE FINAL GRADING PLAN

ZONE 'Z' - BOUNDARY TREE ASSESSMENT 2017									
Tree #	Nr. of trees	Botanical Name	Forest Value	Sensitivity to changes	Proximity to development	Preserv. Value	Preserv. level		
1	1	<i>Quercus rubra</i>	High	Very Sensitive	3m to W Property Line	Medium	3		
2	1	<i>Acer saccharum</i>	High	Very Sensitive	on PL	High	1		
3	5	<i>Pinus strobus</i>	High	Very Sensitive	5m to PL	-	-		
4	1	<i>Tsuga canadensis</i>	High	Very Sensitive	1.5m on Adjacent Site	High	1		
5	1	<i>Acer saccharum</i>	High	Very Sensitive	1m on Adjacent Site	High	1		
6	1	<i>Acer saccharum</i>	High	Very Sensitive	0.3m on Adjacent Site	High	1		
7	1	<i>Prunus serotina</i>	Low	Sensitive	1.2m to PL	-	-		
8	2	<i>Acer saccharum</i>	High	Very Sensitive	6m to PL	-	-		
9	group	<i>Populus grandidentata</i> , <i>Acer saccharum</i> , <i>Tilia americana</i>	Low-High	Very Sensitive	from 2.5m on Adjacent Site	High	1		
10	1	<i>Malus spp</i>	Low	Tolerant	0.5m on Adjacent Site	High	1		
11	2	<i>Populus grandidentata</i>	Low	Sensitive	1m to PL	-	-		
12	1	<i>Tilia americana</i>	Medium	Very Sensitive	0.2m on Adjacent Site	High	1		
13	1	<i>Quercus rubra</i>	High	Very Sensitive	0.5m on Adjacent Site	High	1		
14	16	<i>Juniperus virginiana</i>	Low	Sensitive	1m to PL	Medium	3		
15	1	<i>Pinus strobus</i>	High	Very Sensitive	1.6m to PL	Medium	3		
16	1	<i>Acer saccharum</i>	High	Very Sensitive	0.75m to PL	Medium	3		
17	1	<i>Quercus palustris</i>	Medium	Sensitive	4m on Adjacent Site	High	1		
18	1	<i>Acer saccharum</i>	High	Very Sensitive	0.5m on Adjacent Site	High	1		
19	1	<i>Prunus serotina</i>	Low	Sensitive	0.5m on Adjacent Site	High	1		
20	1	<i>Pinus strobus</i>	High	Very Sensitive	4.5m to PL	-	-		
21	2	<i>Pinus strobus</i>	High	Very Sensitive	9-10m to PL	-	-		
22	1	<i>Fraxinus americana</i>	Medium	Intermediate	12m to PL	-	-		
23	1	<i>Pinus strobus</i>	High	Very Sensitive	9.7m to PL	-	-		
24	1	<i>Prunus serotina</i>	Low	Sensitive	4m to PL	-	-		
25	1	<i>Pinus strobus</i>	High	Very Sensitive	2m to PL	-	-		
26	1	<i>Fagus grandifolia</i>	High	Very Sensitive	0.2m to PL	Medium	3		
27	1	<i>Fraxinus americana</i>	Medium	Intermediate	0.6m on Adjacent Site	High	1		
28	1	<i>Prunus serotina</i>	Low	Sensitive	0.3m on Adjacent Site	High	1		
29	1	<i>Tilia americana</i>	Medium	Very Sensitive	on PL	High	1		
30	1	<i>Acer saccharum</i>	High	Very Sensitive	on PL	High	1		
31	1	<i>Quercus rubra</i>	High	Very Sensitive	7m to PL	-	-		
32	1	<i>Quercus rubra</i>	High	Very Sensitive	7m to PL	-	-		



GENERAL NOTES

CONTRACTOR IS RESPONSIBLE FOR ALL LOCATES INCLUDING ALL UNDERGROUND SERVICES PRIOR TO ANY EXCAVATION OR INSTALLATIONS. THE CONTRACTOR IS REQUIRED TO NOTIFY THE VARIOUS UTILITY COMPANIES 48 HOURS PRIOR TO THE COMMENCEMENT OF ANY WORK.

ANY ACCOMPANYING DOCUMENTATION RELATING TO THE LANDSCAPE PLAN AND/OR PRESERVATION PLAN SUCH AS TENDER DOCUMENTS AND CHANGE NOTICES ARE TO BE ENDORSED BY JOHN D. BELL ASSOCIATES LIMITED PRIOR TO THE BEGINNING OF ANY SITE WORKS. IN THE EVENT THAT OF A DISCREPANCY THE DRAWING SHALL BE ASSUMED CORRECT.

IT IS THE RESPONSIBILITY OF THE PERSON OR PERSONS RESPONSIBLE FOR THE CONSTRUCTED WORKS TO NOTIFY THE LANDSCAPE ARCHITECT WHEN PREPARED FOR ANY REQUIRED INSPECTIONS AND SIGN OFFS.

SCHEDULED MEETINGS SHALL TAKE PLACE AT THE CLOSEST MUTUALLY CONVENIENT TIME.

No.	REVISION	DATE	APRVD.
1.	CLIENT REVIEW		ST

BASE INFORMATION PROVIDED BY:
The Project: Consulting Group Ltd.
220 Mapleview Drive East, Unit 1, Barrie, ON L4N 0W5
Phone: (705) 734-2200 ext 200 Fax: (705) 734-0000

BASE PLAN REVISED: MARCH 2015

ALL DRAWINGS AND SPECIFICATIONS ARE INSTRUMENTS OF SERVICE AND ARE THE PROPERTY OF JOHN D. BELL ASSOCIATES LIMITED. DRAWINGS ARE NOT TO BE MODIFIED AND/OR REPRODUCED WITHOUT THE WRITTEN CONSENT OF JOHN D. BELL ASSOCIATES LIMITED. REPRODUCTION OF DRAWINGS IN ANY FORM WITHOUT THE CONSENT OF JOHN D. BELL ASSOCIATES LIMITED VOIDS THE DRAWING AT WHICH TIME JOHN D. BELL ASSOCIATES LIMITED ACCEPTS NO LIABILITY FOR THE DRAWING CONTENT OR WORKS RESULTING FROM SAID REPRODUCTION.

DRAWINGS MAY BE REPRODUCED BY MUNICIPAL AND GOVERNMENT AGENCIES RESPONSIBLE FOR APPROVALS FOR THEIR OWN USE. JOHN D. BELL ASSOCIATES RESERVES THE RIGHT TO WITHDRAW ANY DRAWINGS FROM GOVERNMENT OR MUNICIPAL AGENCIES WHETHER APPROVED OR NOT IN THE EVENT THAT ACCOUNTS ARE NOT SETTLED OR REMAIN OUTSTANDING.

IT IS THE RESPONSIBILITY OF THE CONTRACTOR TO VERIFY ALL DIMENSIONS ON THE SITE AND REPORT ANY DISCREPANCIES OR VARIATIONS FROM THE SUPPLIED INFORMATION TO THE LANDSCAPE ARCHITECT WITH THE PROJECT. JOHN D. BELL ASSOCIATES LIMITED IS NOT RESPONSIBLE FOR THE ACCURACY OF SURVEY, ARCHITECTURAL, MECHANICAL, ELECTRICAL OR ELECTRICAL INFORMATION SHOWN ON THE DRAWING. FOR FURTHER INFORMATION REFER TO APPROPRIATE SURVEY, ARCHITECTURAL, MECHANICAL, ENGINEERING OR ELECTRICAL DRAWINGS PRIOR TO PROCEEDING WITH ANY WORKS.

THIS DRAWING IS NOT TO BE SCALED.

THIS DRAWING IS NOT TO BE USED FOR CONSTRUCTION UNLESS IT HAS BEEN SIGNED AND DATED BY THE LANDSCAPE ARCHITECT.

FOR SITE PLAN APPROVAL ONLY (NOT FOR CONSTRUCTION)

SIGNED: _____ DATE: _____

DATE: _____

PRINT NAME: _____

SIGNED OWNER/CLIENT: _____

CITY OF BARRIE
APPROVED

DATE: _____

PRINT NAME: _____

SIGNED: _____

ENGINEERING DEPARTMENT

LANDSCAPE ARCHITECTS STAMP
FOR MAP AND ARCHITECTURAL RECORDS

JOHN D. BELL ASSOCIATES LTD.

Urban Designers
Landscape Architects
Site Planners

274 Burton Ave., Suite 1201
Barrie, Ontario
L4N 5M4

Fax: 705-722-5660
Tel: 705-722-6278

961 Big Bay Ltd.
PARCEL Z
BARRIE, ONTARIO

TREE INVENTORY & PRESERVATION PLAN

SCALE: 1:500	DATE:	DESIGNED BY: ST	REVIEWED BY: JDB
CITY FILE No.	OUR FILE REF. # 1114A-16	DRAWN BY: AB/ST	TP-1