



Lighting Calculation Study

Our global brands are

PHILIPS interact

281 Hillmount Road, Markham, Ontario, Canada, L6C 2S3
Office: 905-201-4944

Project name : Queensgate - 681-685 Yonge St - Barrie

Prepared For : Steve Stanton @ AMG-Baytech / JDB Associates Ltd.

Filename: 681 - 685 Yonge St - Barrie - Site - June 12-2019.AGI

By : Linda Zimbalatti

Date:2019-06-13

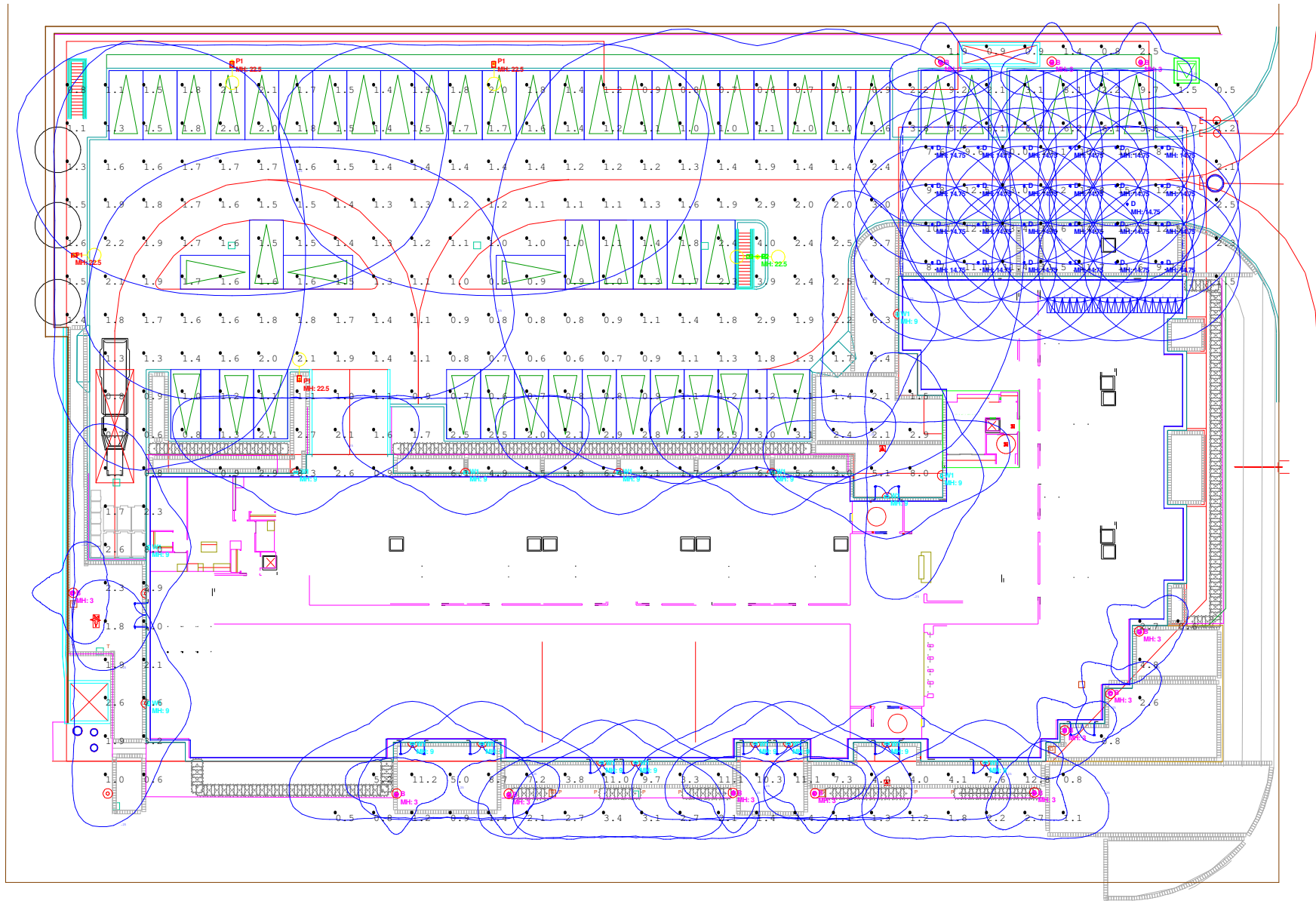
AGi32 Version 19.3.17

Total Time (Hrs.): 1.43

Units: Feet

Page 1 of 9

DISCLAIMER: Calculations have been performed according to IESNA & CIE standards and goodpractice. Some differences between measured values and calculated results may occur due to tolerances in calculation methods, testing procedures, component performance, measurement techniques and field conditions such as voltage and temperature variations. Input data used to generate the attached calculations such as room dimensions, reflectances, furniture and architectural elements significantly affect the lightingcalculations. If the real environment conditions do not match the input data, differences will occur between measured values and calculated values.



281 Hillmount Road, Markham, Ontario, Canada, L6C 2S3
Office: 905-201-4944

DISCLAIMER: Calculations have been performed according to IESNA & CIE standards and good practice. Some differences between measured values and calculated results may occur due to tolerances in calculation methods, testing procedures, component performance, measurement techniques and field conditions such as voltage and temperature variations. Input data used to generate the attached calculations such as room dimensions, reflectances, furniture and architectural elements significantly affect the lighting calculations. If the real environment conditions do not match the input data, differences will occur between measured values and calculated values.

Project name : Queensgate - 681-685 Yonge St - Barrie

Prepared For : Steve Stanton @ AMG-Baytech / JDB Associates Ltd.

Filename: 681 - 685 Yonge St - Barrie - Site - June 12-2019.AGI

By : Linda Zimbalatti

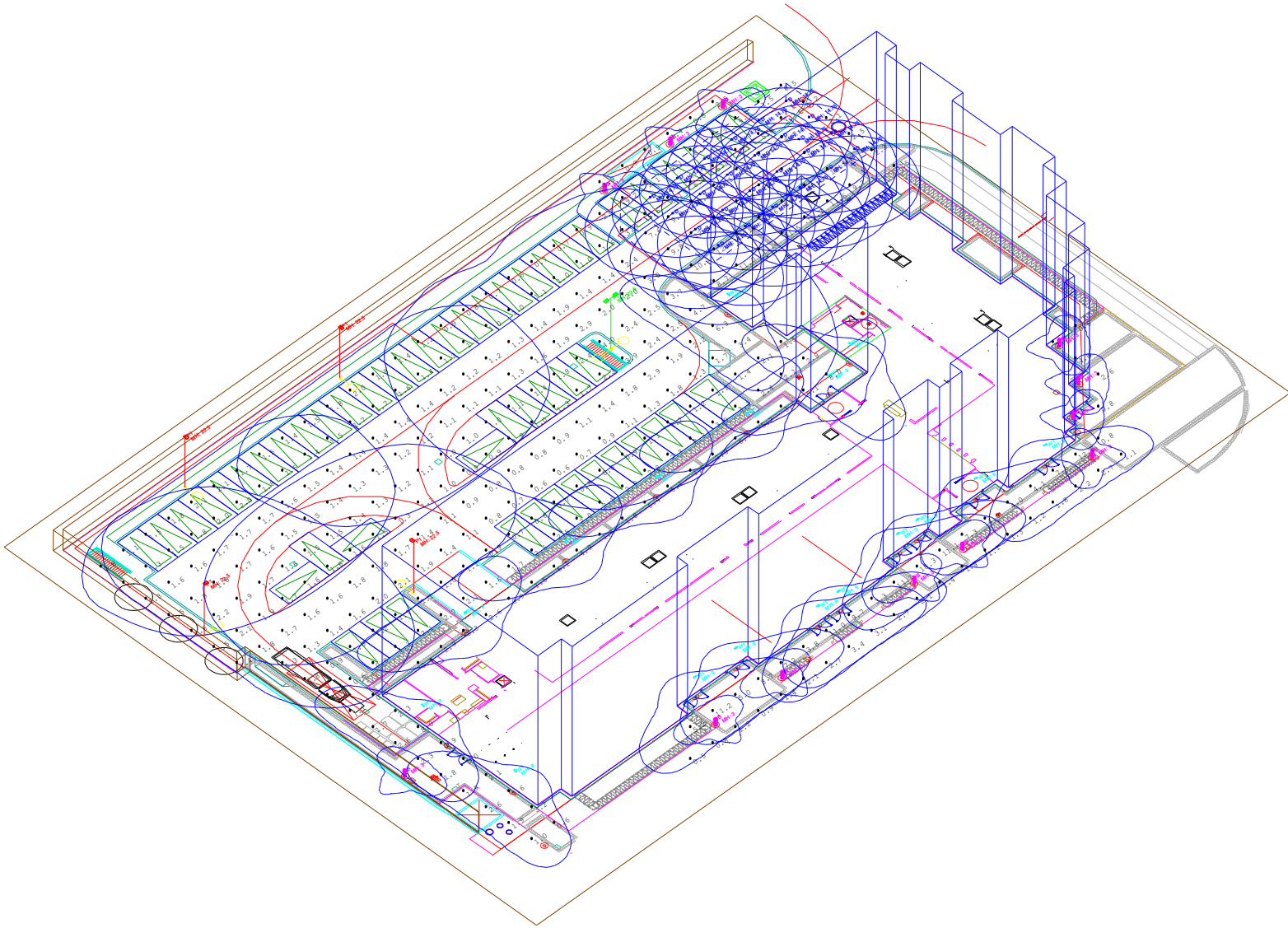
Units: Feet

Date: 2019-06-13

AGI32 Version 19.3.17

Total Time (Hrs.): 1.43

Page 2 of 9



281 Hillmount Road, Markham, Ontario, Canada, L6C 2S3
Office: 905-201-4944

Project name : Queensgate - 681-685 Yonge St - Barrie

Date:2019-06-13

Prepared For : Steve Stanton @ AMG-Baytech / JDB Associates Ltd.

AGi32 Version 19.3.17

Filename: 681 - 685 Yonge St - Barrie - Site - June 12-2019.AGI

Total Time (Hrs.): 1.43


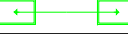



By : Linda Zimbalatti

Units: Feet

Page 3 of 9

DISCLAIMER: Calculations have been performed according to IESNA & CIE standards and goodpractice. Some differences between measured values and calculated results may occur due to tolerances in calculation methods, testing procedures, component performance, measurement techniques and field conditions such as voltage and temperature variations. Input data used to generate the attached calculations such as room dimensions, reflectances, furniture and architectural elements significantly affect the lighting calculations. If the real environment conditions do not match the input data, differences will occur between measured values and calculated values.

Results summary

| Luminaire Schedule | | | | | | | | |
|---|-----|-------|-------------|-------|-------------------------------|------------|-------------|-----------------------|
| Symbol | Qty | Label | Arrangement | LLF | Description | Lum. Watts | Lum. Lumens | (MANUFAC) |
|  | 4 | P1 | SINGLE | 0.900 | ECF-S-32L-530-NW-G2-4-HIS | 55.7 | 5509 | GARDOC by SIGNIFY |
|  | 1 | P2 | BACK-BACK | 0.900 | ECF-S-32L-530-NW-G2-4 | 55.7 | 7025 | GARDCO by SIGNIFY |
|  | 25 | D | SINGLE | 0.900 | L6R20AZ10UVA-L6R20835VA-L6RDW | 19.8 | 1859 | LIGHTOLIER by SIGNIFY |
|  | 17 | W1 | SINGLE | 0.900 | LPW-16-20-NW-G3-3 | 22.3 | 2316 | KEENE by SIGNIFY |
|  | 12 | B | SINGLE | 0.900 | PBL-36-14L-350-NW-G2-3-UNV | 17.7 | 1608 | GARDC by SIGNIFY |

| Calculation Summary | | | | | | | |
|---------------------|-------------|-------|-------|------|-----|---------|---------|
| Label | CalcType | Units | Avg | Max | Min | Avg/Min | Max/Min |
| CANOPY | Illuminance | Fc | 11.56 | 15.5 | 7.6 | 1.52 | 2.04 |
| SITE | Illuminance | Fc | 2.28 | 12.8 | 0.5 | 4.56 | 25.60 |



TYPE B



TYPE D



TYPE P's with backing shields on all exterior light fixtures adjacent to the northern property line



TYPE W1



281 Hillmount Road, Markham, Ontario, Canada, L6C 2S3
Office: 905-201-4944

Project name : Queensgate - 681-685 Yonge St - Barrie

Prepared For : Steve Stanton @ AMG-Baytech / JDB Associates Ltd.

Filename: 681 - 685 Yonge St - Barrie - Site - June 12-2019.AGI

By : Linda Zimbalatti

Units: Feet

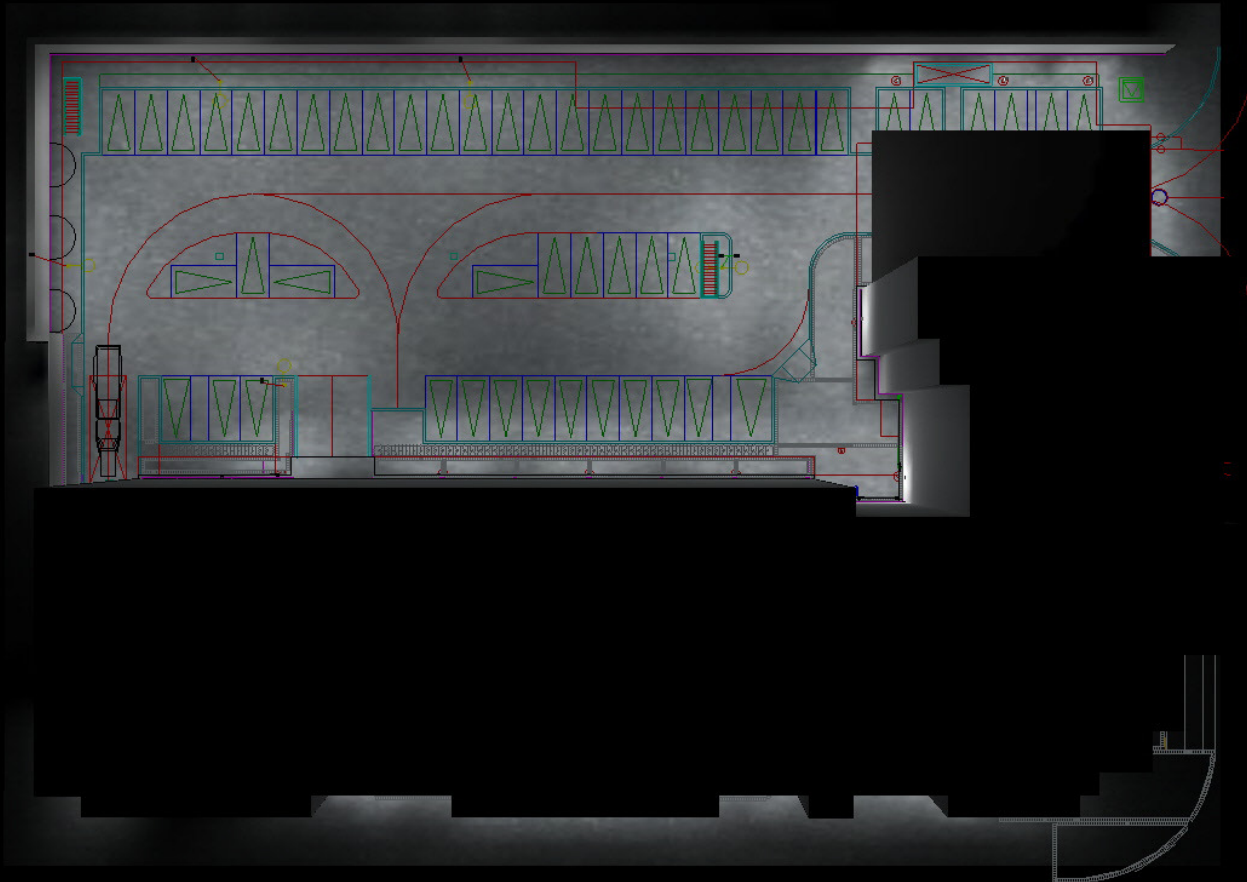
Date:2019-06-13

AGI32 Version 19.3.17

Total Time (Hrs.): 1.43

Page 4 of 9

DISCLAIMER: Calculations have been performed according to IESNA & CIE standards and good practice. Some differences between measured values and calculated results may occur due to tolerances in calculation methods, testing procedures, component performance, measurement techniques and field conditions such as voltage and temperature variations. Input data used to generate the attached calculations such as room dimensions, reflectances, furniture and architectural elements significantly affect the lighting calculations. If the real environment conditions do not match the input data, differences will occur between measured values and calculated values.



281 Hillmount Road, Markham, Ontario, Canada, L6C 2S3
Office: 905-201-4944

DISCLAIMER: Calculations have been performed according to IESNA & CIE standards and goodpractice. Some differences between measured values and calculated results may occur due to tolerances in calculation methods, testing procedures, component performance, measurement techniques and field conditions such as voltage and temperature variations. Input data used to generate the attached calculations such as room dimensions, reflectances, furniture and architectural elements significantly affect the lighting calculations. If the real environment conditions do not match the input data, differences will occur between measured values and calculated values.

Project name : Queensgate - 681-685 Yonge St - Barrie

Prepared For : Steve Stanton @ AMG-Baytech / JDB Associates Ltd.

Filename: 681 - 685 Yonge St - Barrie - Site - June 12-2019.AGI

By : Linda Zimbalatti

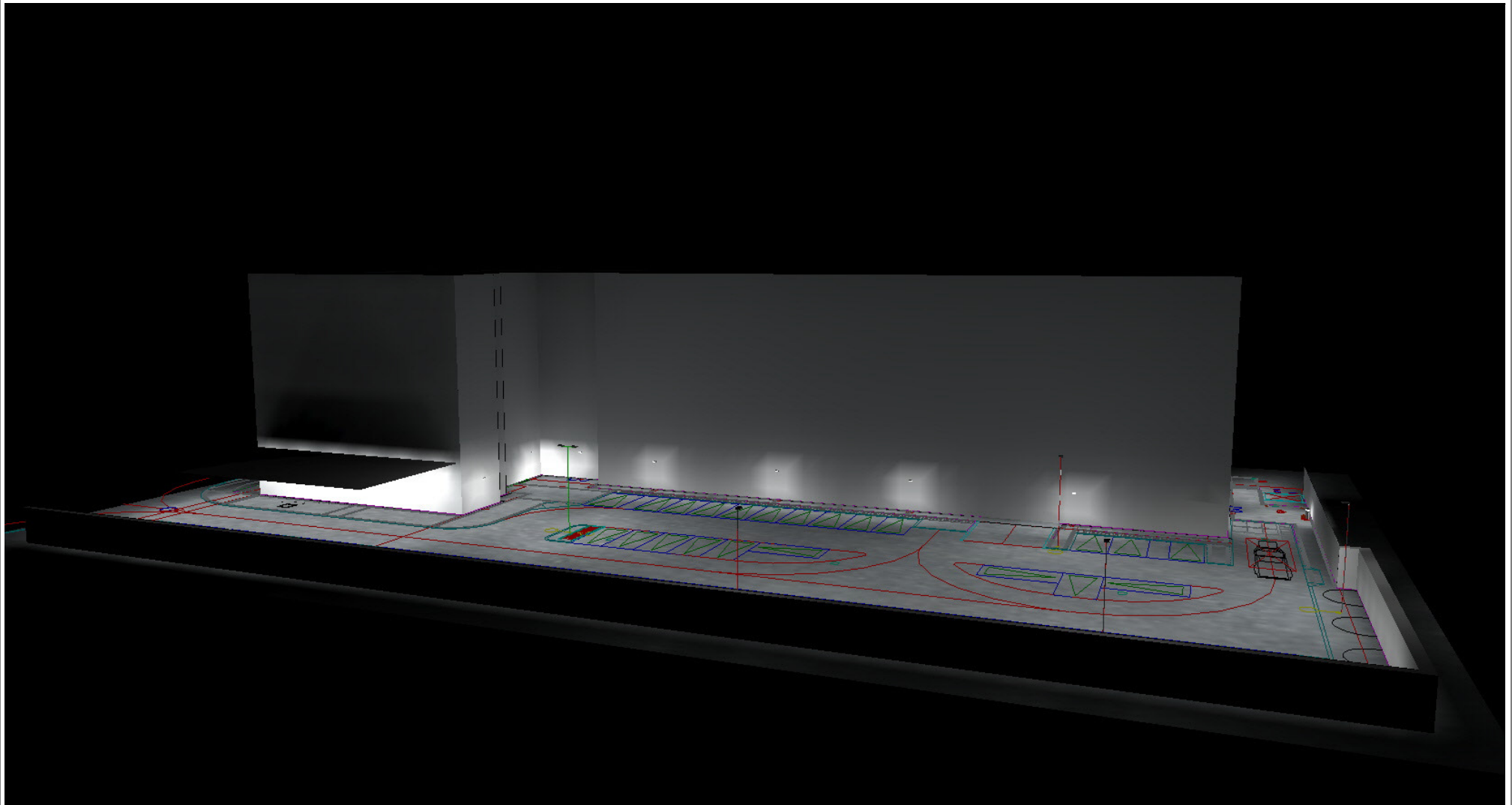
Units: Feet

Date:2019-06-13

AGI32 Version 19.3.17

Total Time (Hrs.): 1.43

Page 5 of 9



281 Hillmount Road, Markham, Ontario, Canada, L6C 2S3
Office: 905-201-4944

DISCLAIMER: Calculations have been performed according to IESNA & CIE standards and goodpractice. Some differences between measured values and calculated results may occur due to tolerances in calculation methods, testing procedures, component performance, measurement techniques and field conditions such as voltage and temperature variations. Input data used to generate the attached calculations such as room dimensions, reflectances, furniture and architectural elements significantly affect the lighting calculations. If the real environment conditions do not match the input data, differences will occur between measured values and calculated values.

Project name : Queensgate - 681-685 Yonge St - Barrie

Prepared For : Steve Stanton @ AMG-Baytech / JDB Associates Ltd.

Filename: 681 - 685 Yonge St - Barrie - Site - June 12-2019.AGI

By : Linda Zimbalatti

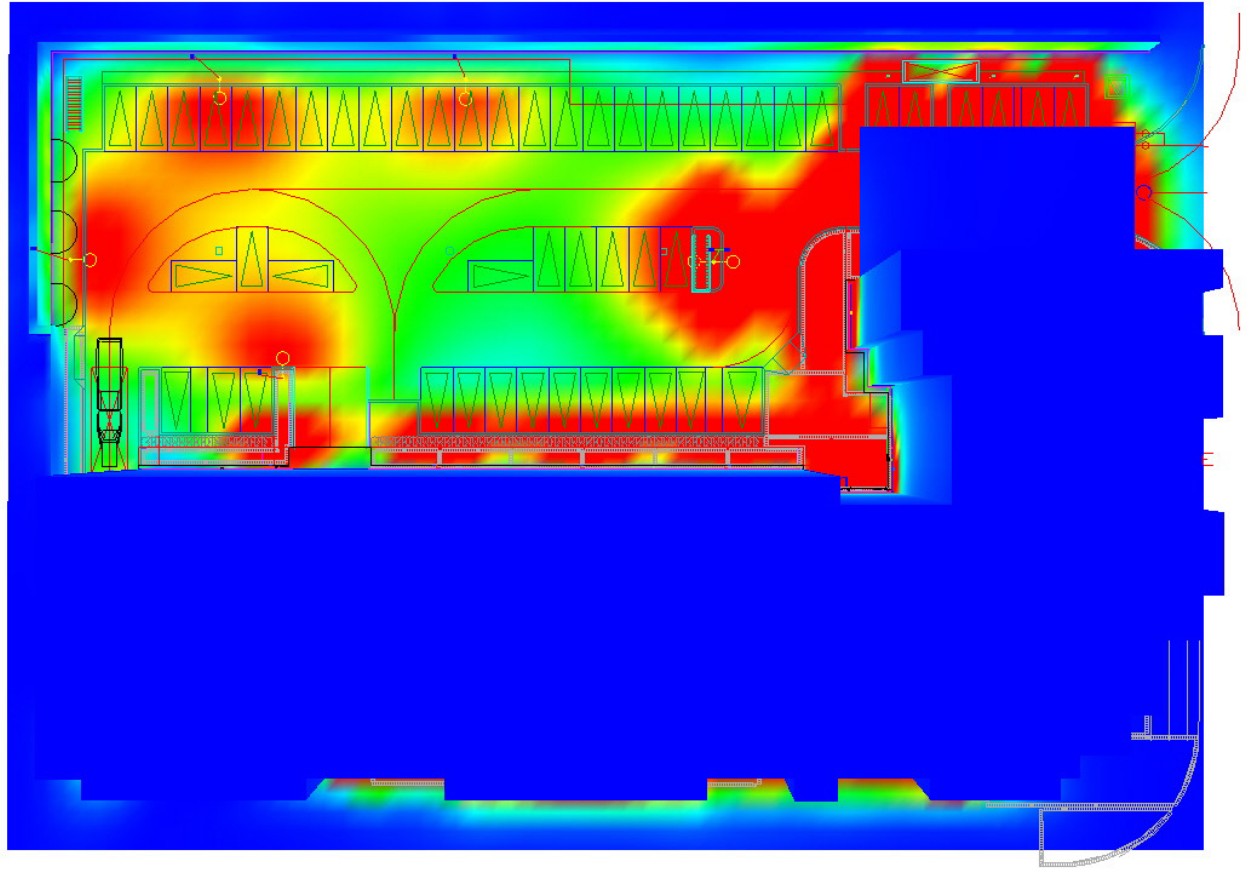
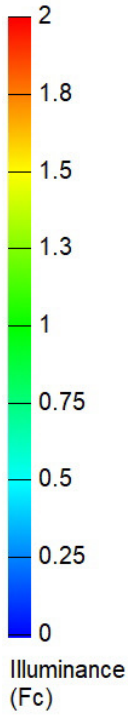
Units: Feet

Date:2019-06-13

AGI32 Version 19.3.17

Total Time (Hrs.): 1.43

Page 6 of 9



281 Hillmount Road, Markham, Ontario, Canada, L6C 2S3
Office: 905-201-4944

DISCLAIMER: Calculations have been performed according to IESNA & CIE standards and good practice. Some differences between measured values and calculated results may occur due to tolerances in calculation methods, testing procedures, component performance, measurement techniques and field conditions such as voltage and temperature variations. Input data used to generate the attached calculations such as room dimensions, reflectances, furniture and architectural elements significantly affect the lighting calculations. If the real environment conditions do not match the input data, differences will occur between measured values and calculated values.

Project name : Queensgate - 681-685 Yonge St - Barrie

Prepared For : Steve Stanton @ AMG-Baytech / JDB Associates Ltd.

Filename: 681 - 685 Yonge St - Barrie - Site - June 12-2019.AGI

By : Linda Zimbalatti

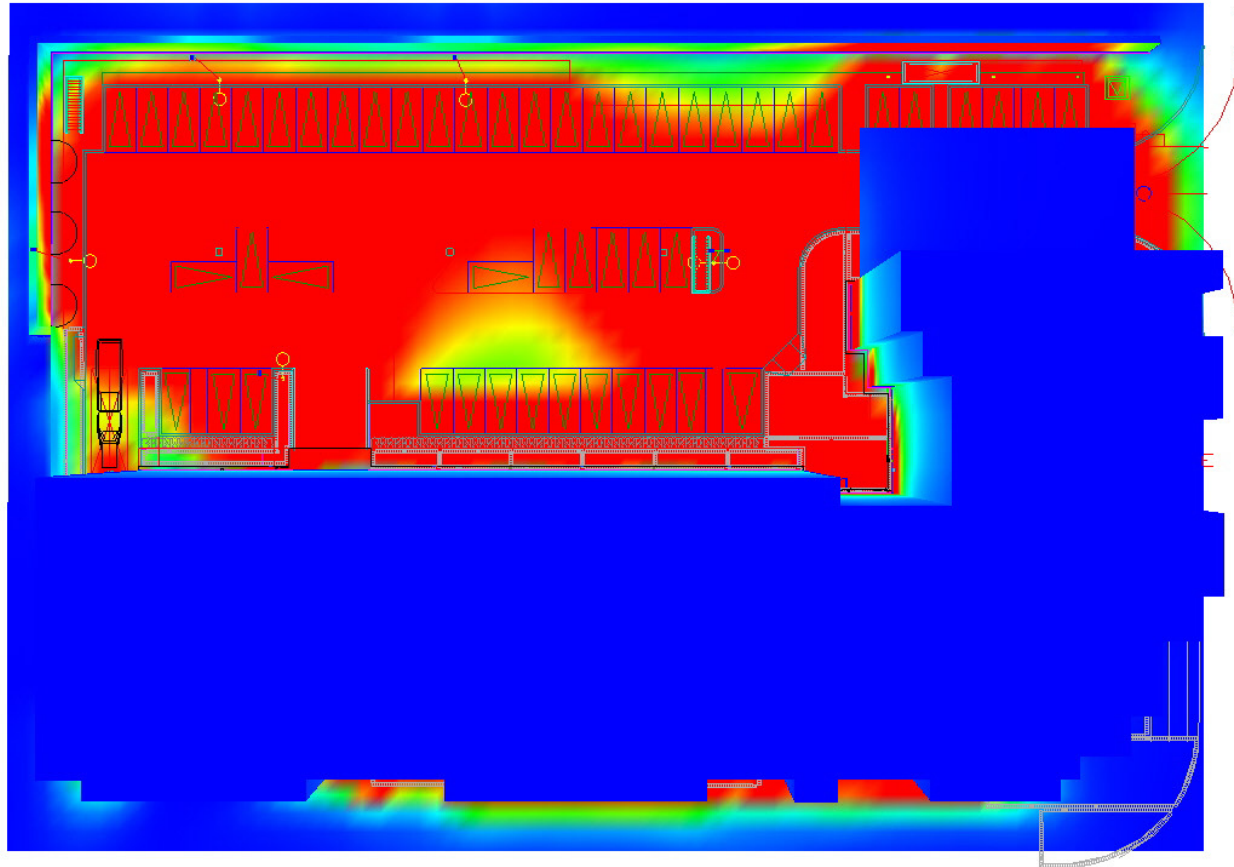
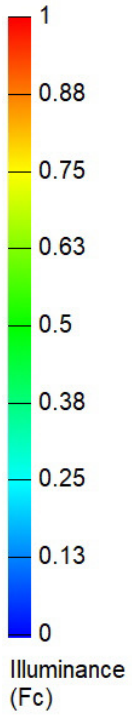
Units: Feet

Date:2019-06-13

AGI32 Version 19.3.17

Total Time (Hrs.): 1.43

Page 7 of 9



281 Hillmount Road, Markham, Ontario, Canada, L6C 2S3
Office: 905-201-4944

Project name : Queensgate - 681-685 Yonge St - Barrie

Date:2019-06-13

Prepared For : Steve Stanton @ AMG-Baytech / JDB Associates Ltd.

AGi32 Version 19.3.17

Filename: 681 - 685 Yonge St - Barrie - Site - June 12-2019.AGI

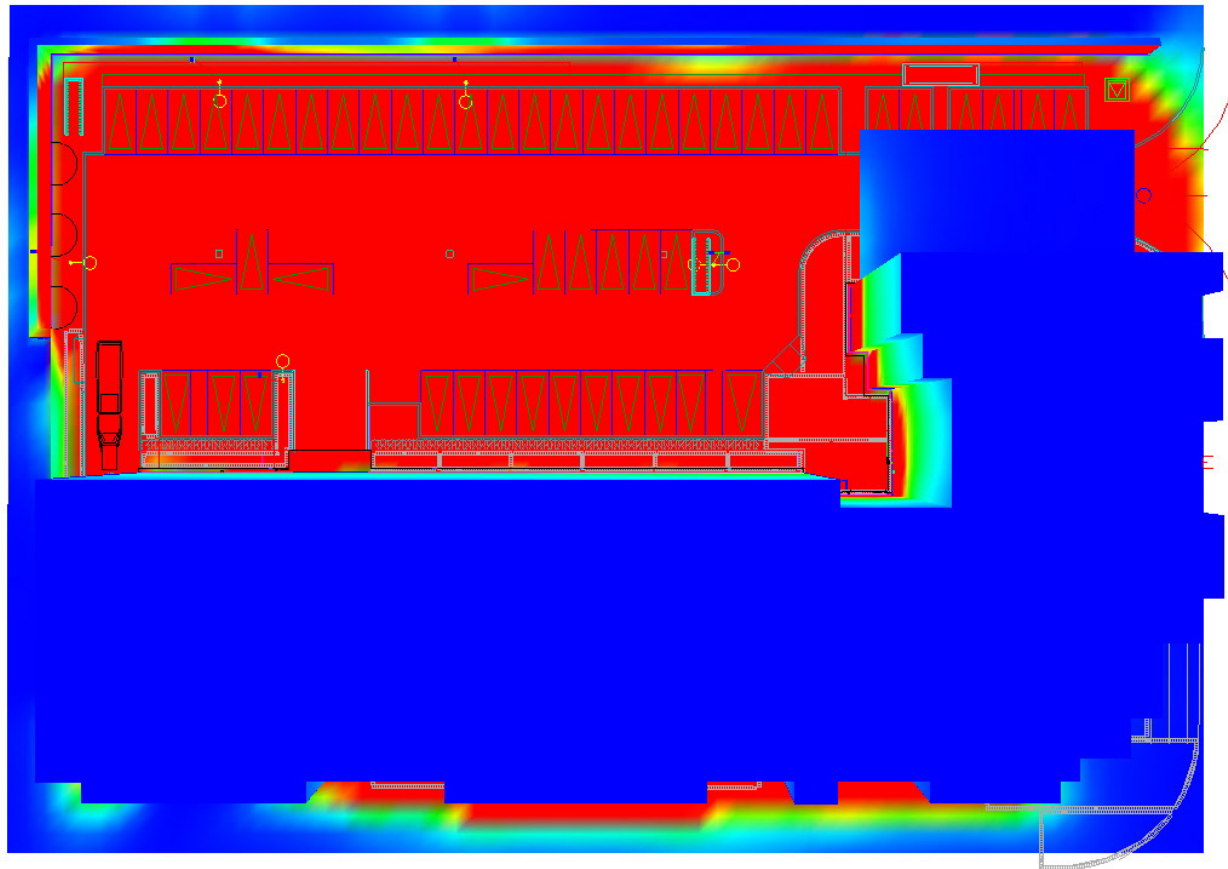
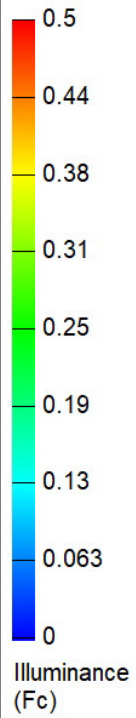
Total Time (Hrs.): 1.43

By : Linda Zimbalatti

Units: Feet

Page 8 of 9

DISCLAIMER: Calculations have been performed according to IESNA & CIE standards and goodpractice. Some differences between measured values and calculated results may occur due to tolerances in calculation methods, testing procedures, component performance, measurement techniques and field conditions such as voltage and temperature variations. Input data used to generate the attached calculations such as room dimensions, reflectances, furniture and architectural elements significantly affect the lightingcalculations. If the real environment conditions do not match the input data, differences will occur between measured values and calculated values.



281 Hillmount Road, Markham, Ontario, Canada, L6C 2S3
Office: 905-201-4944

Project name : Queensgate - 681-685 Yonge St - Barrie

Date:2019-06-13

Prepared For : Steve Stanton @ AMG-Baytech / JDB Associates Ltd.

AGi32 Version 19.3.17

Filename: 681 - 685 Yonge St - Barrie - Site - June 12-2019.AGI

Total Time (Hrs.): 1.43

By : Linda Zimbalatti

Units: Feet

Page 9 of 9

DISCLAIMER: Calculations have been performed according to IESNA & CIE standards and goodpractice. Some differences between measured values and calculated results may occur due to tolerances in calculation methods, testing procedures, component performance, measurement techniques and field conditions such as voltage and temperature variations. Input data used to generate the attached calculations such as room dimensions, reflectances, furniture and architectural elements significantly affect the lightingcalculations. If the real environment conditions do not match the input data, differences will occur between measured values and calculated values.