

Do not scale drawings. Contractors must check and verify all dimensions and report any discrepancies to the Architect before proceeding with the work. All documents remain the property of the Architect. Unauthorised use, modification, and/or reproduction of these documents is prohibited without written permission. The Consultant accepts no responsibility for damages, if any, suffered by any third party as a result of decisions made or actions based on the Contract Documents. The material contained herein reflects the Consultant's best judgement in light of the information available to him at the time of preparation. Any use which a third party makes of the Contract Documents, or any reliance on or decisions to be made based on them are the responsibility of such third parties. The Consultant accepts no responsibility for damages, if any, suffered by any third party as a result of decisions made or actions based on the Contract Documents.

C:\Users\swendland\Documents\18027\_70 Dean Ave. Barrie\_V13\_swendland.rvt



**1 SOUTH ELEVATION**  
1:200



**2 NORTH ELEVATION**  
1:200


**ELEVATION MATERIAL LEGEND**

- 1 BRICK MASONRY: RED
- 2 METAL PANEL: DARK GREY
- 3 PREFINISHED METAL PANEL: WOOD BROWN
- 4 PRECAST CONCRETE PANEL: MEDIUM GREY
- 5 PRECAST CONCRETE PANEL: WHITE FEATURE ELEMENTS
- 6 LOW E COATED CLEAR GLASS
- 7 SPANDREL GLASS PANEL
- 8 PRECAST CONCRETE DECORATIVE SILL

**GENERAL NOTES**

1. DO NOT SCALE DRAWINGS. WRITTEN DIMENSIONS SHALL HAVE PRECEDENCE OVER SCALED DIMENSIONS.
2. ALL WORK SHALL COMPLY WITH THE 2012 ONTARIO BUILDING CODE AND AMENDMENTS.
3. CONTRACTORS MUST CHECK AND VERIFY ALL DIMENSIONS AND SPECIFICATIONS AND REPORT ANY DISCREPANCIES TO THE ARCHITECT BEFORE PROCEEDING WITH THE WORK.
4. ALL CONTRACTORS AND SUB-CRONTACTORS SHALL HAVE A SET OF APPROVED CONSTRUCTION DOCUMENTS ON SITE AT ALL TIMES.
5. ALL DOCUMENTS REMAIN THE PROPERTY OF THE ARCHITECT. UNAUTHORIZED USE, MODIFICATION, AND/OR REPRODUCTION OF THESE DOCUMENTS IS PROHIBITED WITHOUT WRITTEN PERMISSION. THE CONTRACT DOCUMENTS WERE PREPARED BY THE CONSULTANT FOR THE ACCOUNT OF THE OWNER.
6. THE MATERIAL CONTAINED HEREIN REFLECTS THE CONSULTANT'S BEST JUDGEMENT IN LIGHT OF THE INFORMATION AVAILABLE TO HIM AT THE TIME OF PREPARATION. ANY USE WHICH A THIRD PARTY MAKES OF THE CONTRACT DOCUMENTS, OR ANY RELIANCE ON OR DECISIONS TO BE MADE BASED ON THEM ARE THE RESPONSIBILITY OF SUCH THIRD PARTIES.
7. THE CONSULTANT ACCEPTS NO RESPONSIBILITY FOR DAMAGES, IF ANY, SUFFERED BY ANY THIRD PARTY AS A RESULT OF DECISIONS MADE OR ACTIONS BASED ON THE CONTRACT DOCUMENTS.

No.	Date	Revision
1	2018-09-19	ISSUED FOR SPA

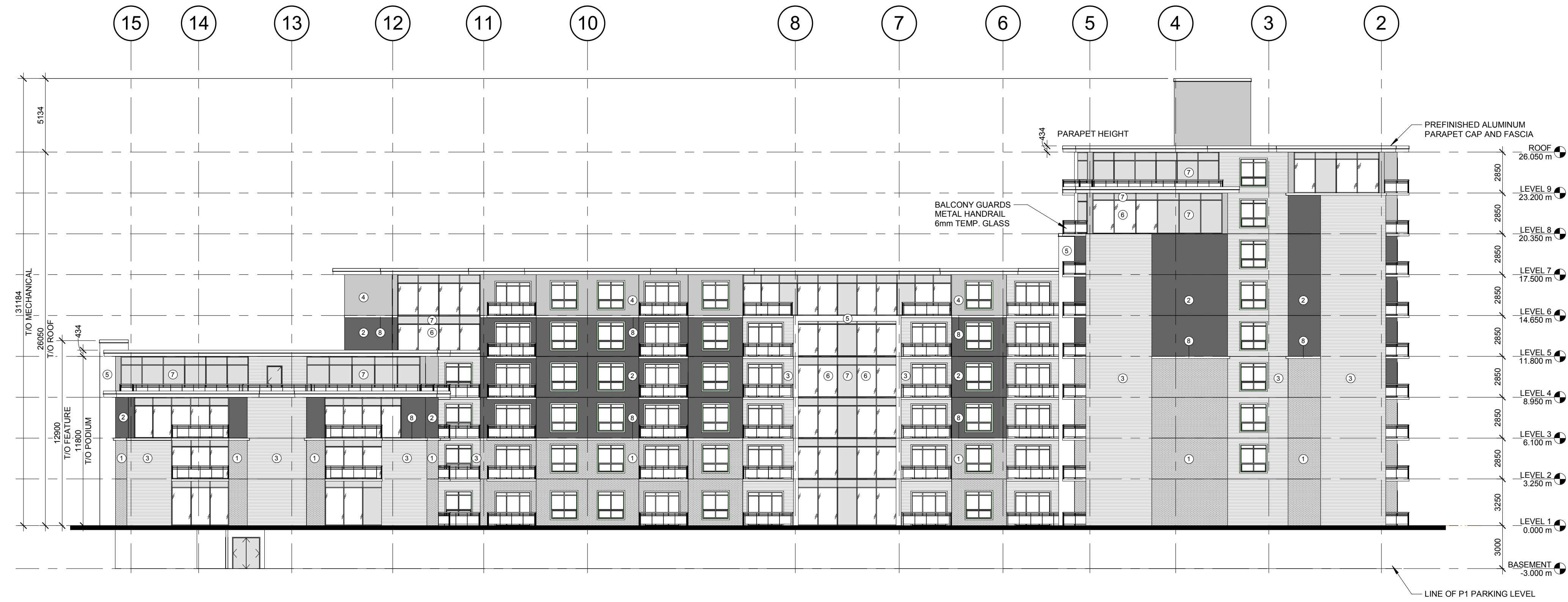

 Project No: 18027  
 Issue Date: 2018-06-15  
 Drawn by:  
 Checked by: MV  
 Plot Date / Time: 19/09/2018 2:26:21 PM

**70 DEAN AVENUE,  
BARRIE, ONTARIO**

**ELEVATIONS**

ONTARIO ASSOCIATION OF ARCHITECTS  
 EDWARD THOMAS LICENCE 5572  
 Drawing No. 18027  
 Status: As indicated  
 ISSUED FOR SPA  
 Drawing No. 18027  
 Revision No. 1  
**A3.1 - r1**

Do not scale drawings. Contractors must check and verify all dimensions and report any discrepancies to the Architect before proceeding with the work. All documents remain the property of the Architect. Unauthorised use, modification, and/or reproduction of these documents is prohibited without written permission. The Contract Documents were prepared by the Consultant for the account of the Owner. The material contained herein reflects the Consultant's best judgment in light of the information available to him at the time of preparation. Any use which is not intended by the Consultant, or any reliance on or decisions to be made based on them are the responsibility of such third parties. The Consultant accepts no responsibility for damages, if any, suffered by any third party as a result of decisions made or actions based on the Contract Documents.  
 C:\Users\swendland\Documents\18027\_70 Dean Ave. Barrie\_V13\_swendland.rvt



**1 EAST ELEVATION**  
1:200




**2 WEST ELEVATION**  
1:200

**ELEVATION MATERIAL LEGEND**

- 1 **BRICK MASONRY: RED**
- 2 **METAL PANEL: DARK GREY**
- 3 **PREFINISHED METAL PANEL: WOOD BROWN**
- 4 **PRECAST CONCRETE PANEL: MEDIUM GREY**
- 5 **PRECAST CONCRETE PANEL: WHITE FEATURE ELEMENTS**
- 6 **LOW E COATED CLEAR GLASS**
- 7 **SPANDREL GLASS PANEL**
- 8 **PRECAST CONCRETE DECORATIVE SILL**


No.	Date	Revision
1	2018-09-19	ISSUED FOR SPA



Project No. 18027  
 Issue Date 2018-06-15  
 Drawn by  
 Checked by MV  
 Plot Date / Time 19/09/2018 2:26:27 PM

**70 DEAN AVENUE,  
BARRIE, ONTARIO**

**ELEVATIONS**



Drawing Scale 1:200  
 Status  
 ISSUED FOR SPA  
 Drawing No. Revision No.  
**A3.2 - r1**