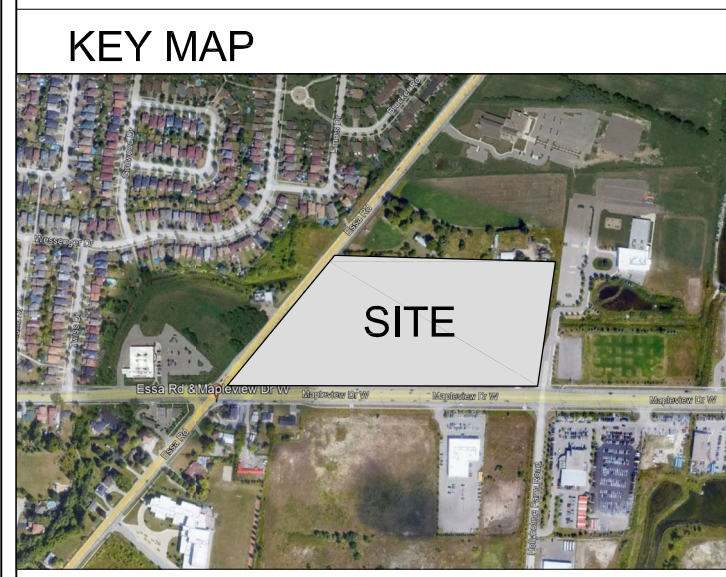
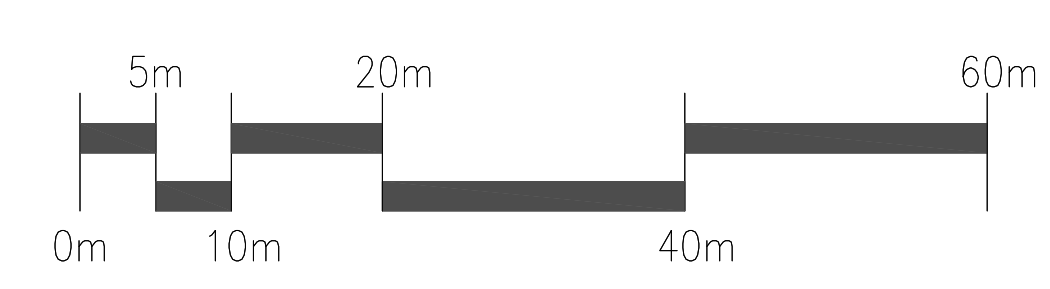


GENERAL NOTES

- VERIFY ALL DIMENSIONS.
- DO NOT SCALE DRAWINGS.
- REPORT ANY DISCREPANCIES, DISCOVERED ERRORS, OR OMISSIONS TO THE LANDSCAPE ARCHITECT BEFORE PROCEEDING.
- IT IS ADVISED THAT CONTRACTORS CONTACT THE LANDSCAPE ARCHITECT PRIOR TO CONSTRUCTION TO ENSURE THE USE OF THE LATEST REVISED DRAWINGS.
- DRAWINGS AND SPECIFICATIONS ARE THE PROPERTY OF THE LANDSCAPE ARCHITECT.

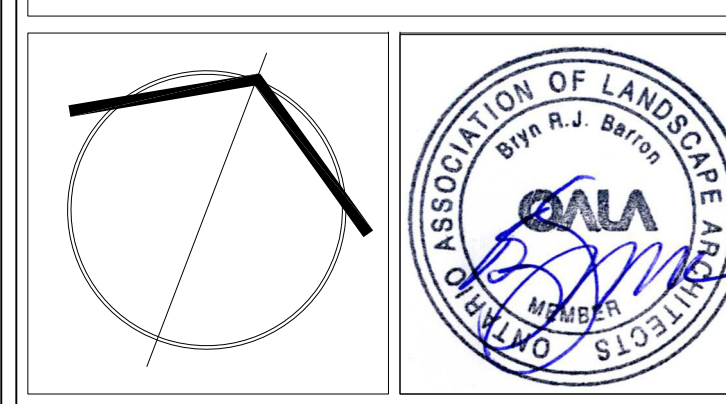


- KEY MAP - NTS LEGEND**
- PROPOSED DECIDUOUS TREE
 - PROPOSED CONIFER TREE
 - PROPOSED TREE / SHRUB NODE
 - PROPOSED SHRUBS
 - PROPOSED BIOENGINEERING BANK TREATMENT
 - WOOD DEBRIS HABITAT FEATURE
 - CHAIN LINK FENCE
 - BIORETENTION FACILITY
 - SEEDING AREA
 - CHANNEL



No.	DATE	REVISION	BY
2	DEC 15 2022	ISSUED FOR SUBMISSION	B.B.
1	NOV 17 2022	ISSUED FOR SUBMISSION	A.S.

It is the responsibility of the Contractor and/or Owner to ensure that the drawings with the latest revisions are used for construction.



SBK 5770 HURONTARIO STREET, SUITE 320
 MISSISSAUGA, ONTARIO, L4R 3G5
 T: 416.695.4949 F: 905.712.3101
 WWW.STRYBOS.COM

STRYBOS BARRON KING
 LANDSCAPE ARCHITECTURE

PROJECT:
MAPLEVIEW VILLAGE
 MAPLEVIEW DR. & ESSA RD.
 BARRIE, ON

DRAWING TITLE:
BEAR CREEK CHANNEL
 LANDSCAPE CONCEPT PLAN

SCALE: 1 : 500	PROJECT No. 5832
DATE: DECEMBER 2020	DRAWING No. L101
DRAWN BY: SS/KL	CHECKED BY: SM/BB