

**Tree Inventory, Preservation Plan and  
Edge Management Plan Report  
844 Veterans Drive  
Barrie, Ontario**

prepared for

**IPS Consulting  
647 Wellham Road, Unit 9  
Barrie, Ontario L4N 0B7**

prepared by



---

146 Lakeshore Road West  
PO Box 1267 Lakeshore W PO  
Oakville ON L6K 0B3  
t: 289.837.1871  
e: [consult@kuntzforestry.ca](mailto:consult@kuntzforestry.ca)

16 September 2022

KUNTZ FORESTRY CONSULTING Inc. Project P1577

## Introduction

Kuntz Forestry Consulting Inc. was retained by IPS Consulting to complete a Tree Inventory, Preservation Plan, and Edge Management Plan Report in support of a development application for the property located at 844 Veterans Drive in Barrie, Ontario. The subject property is located on the northwest side of McKay Road and Veterans Drive.

The work plan for this study included the following:

- Prepare inventory of all tree resources 10 cm in diameter and larger occurring on subject property and trees of all sizes within the road right-of-way and on neighbouring properties, with the potential to be impacted by the proposed development;
- Conduct hazard tree assessment of trees within striking distances of the proposed development;
- Evaluate potential tree saving opportunities based on proposed site plans; and,
- Document the findings in a Tree Inventory and Preservation Plan report.

This report and Figures TP1-TP5 include the following components:

- Tree Preservation/Removal Plan (see Figures TP1-TP2)
- Boundary Tree Identification (see Figures TP1-TP2)
- Tree Inventory (See Table 1 and TP3-TP4)
- Health Assessment (See Table 1 and TP3-TP4)

## Methodology

### *Tree Inventory/Health Assessment/Boundary Tree Identification*

The initial field assessments were conducted on 10 and 11 July 2017. Trees on the subject property were tagged 1-490. Trees along the existing trail within the County of Simcoe were not tagged and identified with letters A-Z and AA-AP. A total of 533 trees were included in the first tree inventory.

The second field assessments were conducted on 6 and 7 September 2022. All previously inventoried trees were re-assessed and trees that have grown over 10cm DBH were added into the tree inventory. Trees that were within the subject property and added into the inventory were tagged 584-646. Trees that were on the adjacent properties to the west and to the south were already tagged 678-722. A total of 618 trees were included in the revised tree inventory.

All trees greater than 10cm DBH on the subject property, and trees of all sizes within the road right-of-way and on neighbouring property with the potential to be impacted by the proposed work were included in the Tree Inventory/Health Assessment.

Trees were identified and/or tagged and located by a KFCI's Trimble GPS unit, accurate to approximately 1m. Refer to Table 1 for the tree inventory and health assessment.

Tree resources included in the inventory were visually assessed for condition utilizing the following parameters:

**Tree #** - numbers assigned to trees that corresponds to Figures TP-1 to TP-2.

**Species** - common and botanical names provided in the inventory table (Table 1).

**DBH** - diameter (centimeters) at breast height, measured at 1.4 metres above the ground.

**Condition** - condition of tree considering trunk integrity, crown structure and crown vigour. Condition ratings include poor (P), fair (F), and good (G).

**Crown Dieback** – the percentage of dead branches located in the crown.

**Comments** - additional relevant detail.

### *Canopy Survey*

Driplines of inventoried trees were estimated by KFCI. Refer to Figures TP1- and TP2 for the extent of the canopies, including neighbouring and boundary trees.

## **Existing Site Conditions**

The subject property is currently occupied by a rural residential building, an in-ground swimming pool, a tennis court, associated amenity buildings and a gravel driveway. Tree resources exist in the form of landscape and natural feature trees. Natural features exist on the north side of the subject property.

The tree inventory documented a total of 618 trees. Refer to Figures TP-1 to TP-2 for the tree locations and Table 1 for the complete tree inventory.

Tree resources included in the inventory are comprised of Manitoba Maple (*Acer negundo*), Red Maple (*Acer rubrum*), Silver Maple (*Acer saccharinum*), Sugar Maple (*Acer saccharum*), Alder Species (*Alnus spp.*), White Birch (*Betula papyrifera*), Bitternut Hickory (*Carya cordiformis*), American Beech (*Fagus grandifolia*), Green Ash (*Fraxinus pennsylvanica*), Shademaster Honey Locust (*Gleditsia triacanthos 'inermis'*), Butternut (*Juglans cinerea*), Apple Species (*Malus spp.*), Ironwood (*Ostrya virginiana*), Norway Spruce (*Picea abies*), White Spruce (*Picea glauca*), Austrian Pine (*Pinus nigra*), White Pine (*Pinus strobus*), Scots Pine (*Pinus sylvestris*), Poplar Species (*Populus spp.*), Trembling Aspen (*Populus tremuloides*), Sweet Cherry (*Prunus avium*), Black Cherry (*Prunus serotina*), Red Oak (*Quercus rubra*), Weeping Willow (*Salix babylonica*), Eastern White Cedar (*Thuja occidentalis*), Basswood (*Tilia americana*), Little-leaf Linden (*Tilia cordata*), White Elm (*Ulmus americana*), and Elm Species (*Ulmus spp.*).

### *Butternut*

Tree BN15 is Butternut and is protected under the federal government's Endangered Species Act (MNR, 2007). This tree is listed as an endangered species as per the COSEWIC list and until permission has been granted, the tree must be protected 25m from its base. The removal of Tree BN15 is required for the proposed subdivision. A formal assessment was completed and reported to the MECP. Butternut Health Assessment identified the tree as a non-retainable tree (category 1). A waiting period of 30 days is required prior to any further injury to the tree. Once the assessment is approved, BN15 will be no longer protected by the Endangered Species Act and no permit from MECP will be required for its injury. Table 1 for the inventory information of Tree BN15.

## Proposed Construction

The proposed development includes the construction of demolition of the existing buildings and the construction of a residential subdivision. Refer to Figures TP-1 to TP-2 for the proposed development.

## Discussion

The following sections provide a discussion and analysis of development impacts, tree removals and tree preservation relative to both concept plans.

### *Construction Impacts/Tree Removals*

The removal of 604 trees is required to accommodate the proposed development. All trees that require removal have direct conflicts with the proposed grading up to the property boundary. Refer to Figures TP-1 to TP-2 for the location of tree removals.

Trees 24,257, 258, 271, 306, 312, 678, 714, 716, 722, D, H, L, M, P, U, V, W, AA, AC, AD, AE, AF, AG, AH, AI, AL, AK, AM, and AN are located on the adjacent properties. Written consent from the respective owners will be required prior to their removal.

### *Tree Preservation*

The preservation of the remaining 14 trees will be possible with the use of appropriate tree protection fencing as indicated on Figures TP1-TP2. Trees for preservation include Trees 259, 260, 276, 277, 307, 313, 367, 711, 719, A, B, X, Y and AP.

Tree protection measures must be implemented prior to the proposed work to ensure tree resources designated for retention are not impacted by the proposed development. Refer to Figures TP-1 to TP-2 for the location of required tree preservation fencing and general Tree Protection Plan Notes and Figure TP-5 for tree preservation fencing specifications. Tree protection fencing is prescribed where disturbances are occurring near trees. In all other areas, it is understood that ESC fencing will prevent intrusions beyond specified areas.

Minor encroachment into the driplines of Trees 367, 719, A, and B is required to accommodate the proposed site plan. Regrading of the existing surface is proposed up to property boundary. Given that encroachment is limited to small area, long-term adverse impacts are not anticipated to the trees.

## Summary and Recommendations

Kuntz Forestry Consulting Inc. was retained by IPS Consulting to complete a Tree Inventory, Preservation Plan, and Edge Management Plan Report in support of a development application for the property at 844 Veterans Drive in Barrie, Ontario. A tree inventory was conducted and reviewed in the context of the proposed site plan.

The findings of the study indicate a total 618 trees and tree polygons situated on and adjacent to the subject property. The removal of 604 trees will be required to

accommodate the proposed development. The remaining 14 trees can be preserved during earthworks with appropriate tree protection measures.

The following recommendations are suggested to minimize impacts to trees identified for preservation. Refer to Figures TP-1 to TP-2 for the location of tree preservation fence and further tree protection plan notes and Figures TP-5 for tree preservation details and drawings.

- Tree protection barriers and fencing should be erected at locations as prescribed on Figures TP-1 to TP-2. All tree protection measures should follow the guidelines as set out in the tree preservation plan notes and the tree preservation fencing details on Figures TP-5.
- Tree protection measures are to be implemented prior to construction to ensure the trees identified for preservation are not impacted by the development.
- Branches and roots that extend beyond prescribed tree protection zones that require pruning must be pruned by a qualified Arborist or other tree professional as approved by the City of Barrie. All pruning of tree roots and branches must be in accordance with good arboricultural standards.
- Site visits, pre, during and post construction is recommended by either a certified consulting arborist (I.S.A.) or registered professional forester (R.P.F.) to ensure proper utilization of tree protection barriers. Trees should also be inspected for damage incurred during construction to ensure appropriate pruning or other measures are implemented.

Respectfully Submitted,  
**Kuntz Forestry Consulting Inc.**

Kaho Hayashi

Kaho Hayashi, B.Sc., M.Sc.F.  
Associate Forest Ecologist  
ISA Certified Arborist #ON-2153A, TRAQ

### Limitations of Assessment

*Only the tree(s) identified in this report were included in the inventory. The assessment of the trees presented in this report has been made using accepted arboricultural techniques. These may include a visual examination taken from the ground of all the above-ground parts of the tree for structural defects, scars, external indications of decay such as fungal fruiting bodies, evidence of attack by insects, discoloured foliage, the condition of any visible root structures, the degree of lean (if any), the general condition of the trees and the identification of potentially hazardous trees or recommendations for removal (if applicable). Where trees could not be directly accessed (ie. due to obstructions, and/or on neighbouring properties), trees were assessed as accurately as possible from nearby vantage points.*

*Locations of trees provided in the report are determined as accurately as possible based on the best information available. If official survey information is not provided, tree location in the report may not be exact. In this case, if trees occur on or near property boundaries, an official site survey may be required to determine ownership utilizing specialized survey protocol to gain precise location.*

*Furthermore, recommendations made in this report are based on the site plans that have been provided at the time of reporting. These recommendations may no longer be applicable should changes be made to the site plan and/or grading, servicing, or landscaping plans following report submission.*

*Notwithstanding the recommendations and conclusions made in this report, it must be recognized that trees are living organisms, and their health and vigor constantly change over time. They are not immune to changes in site conditions or seasonal variations in the weather conditions. Any tree will fail if the forces applied to the tree exceed the strength of the tree or its parts.*

*Although every effort has been made to ensure that this assessment is reasonably accurate, the trees should be re-assessed periodically. The assessment presented in this report is valid at the time of inspection.*

**Table 1. Tree Inventory**

Location: 844 Veterans Drive, Barrie

Date: 10 & 11 July 2017, 6 & 7 September 2022 Surveyors: KH

Tag #	Common Name	Scientific Name	DBH	TI	CS	CV	CDB	DL	Comments	Action
1	Sugar Maple	<i>Acer saccharum</i>	10	G	G	G		2.5		Remove
2	Red Oak	<i>Quercus rubra</i>	31.5	G	G	G		4.5		Remove
3	Green Ash	<i>Fraxinus pennsylvanica</i>	~40	-	-	-	100	-	Dead	Remove
4	Sugar Maple	<i>Acer saccharum</i>	13	F/G	G	F/G		2.5	Asymmetrical crown (H)	Remove
5	White Birch	<i>Betula papyrifera</i>	20.5, 10.5	F/G	G	F/G		2.5	Lean (L), union at base	Remove
6	White Birch	<i>Betula papyrifera</i>	21, 17	F/G	G	F/G		3	Union at base, lean (L-M)	Remove
7	White Pine	<i>Pinus strobus</i>	13.5	G	F/G	P/F	30	2	Sparse crown (H)	Remove
8	Basswood	<i>Tilia americana</i>	19	F	F/G	F	20	3	Bow (M), crook (M), asymmetrical crown (M)	Remove
9	White Birch	<i>Betula papyrifera</i>	28, 27, 25, 21	F/G	G	F/G		4.5	Union at base (4 stems)	Remove
10	Austrian Pine	<i>Pinus nigra</i>	26	F/G	G	F		2.5	Sparse crown (L), crook (L)	Remove
11	Austrian Pine	<i>Pinus nigra</i>	36	G	F/G	F		3.5	Sparse crown (M)	Remove
12	Austrian Pine	<i>Pinus nigra</i>	39	G	F/G	F		4	Sparse crown (M)	Remove
13	Basswood	<i>Tilia americana</i>	~30	-	-	-	100	-	Dead	Remove
14	Sugar Maple	<i>Acer saccharum</i>	15	G	F/G	G		2.5	Asymmetrical crown (M)	Remove
15	Butternut	<i>Juglans cinerea</i>	17.5	P	P	P	50	2	Bow (L), crook (L), asymmetrical crown (M), canker (H)	Remove
16	White Pine	<i>Pinus strobus</i>	21	G	G	F/G		2		Remove
17	-	-	~25	-	-	-	100	-	Dead	Remove
18	White Birch	<i>Betula papyrifera</i>	24, 23	F/G	G	F/G		3.5	Union at base, lean (L), asymmetrical crown (L)	Remove
19	White Birch	<i>Betula papyrifera</i>	28, 26, 25, 24	F/G	G	F/G		4.5	Union at base, lean (L)	Remove
20	White Spruce	<i>Picea glauca</i>	11	-	-	-	100	-	Dead	Remove
21	Red Oak	<i>Quercus rubra</i>	12	F/G	F/G	F		2.5	Bow (L), asymmetrical crown (M)	Remove
22	Sugar Maple	<i>Acer saccharum</i>	42	F/G	G	G		5	Union at 1.4m and 1.8m, asymmetrical crown (M)	Remove
23	Sugar Maple	<i>Acer saccharum</i>	59, 35	P	G	G		7	Union at base, stem wound (H) at base, hollow ==> <b>hazard</b>	Remove

24	Green Ash	<i>Fraxinus pennsylvanica</i>	~50, 20	-	-	-	100	-	Dead	Remove
25	Basswood	<i>Tilia americana</i>	17	F/G	G	G		3	Crook (L), bow (L)	Remove
26	Red Oak	<i>Quercus rubra</i>	25	G	G	G		4	Lean (L), co-dominance in crown	Remove
27	Red Oak	<i>Quercus rubra</i>	12.5	G	G	G		2.5		Remove
28	White Birch	<i>Betula papyrifera</i>	23, 12.5, 12	F/G	G	P	50	3	Union at base, dead branches (M), broken branches (M)	Remove
29	White Pine	<i>Pinus strobus</i>	54.5	F	F	F		3	Asymmetrical crown (L), co-dominance at 8m but 1 stem failed	Remove
30	White Birch	<i>Betula papyrifera</i>	28, 26	F/G	G	F/G		4.5	Union at base	Remove
31	Red Oak	<i>Quercus rubra</i>	44	G	G	F	20	6		Remove
32	Red Oak	<i>Quercus rubra</i>	56	F	G	F/G		8	Co-dominance at 1.8m with included bark (H)	Remove
33	Sugar Maple	<i>Acer saccharum</i>	27	G	F/G	G		4.5	Asymmetrical crown (H)	Remove
34	Sugar Maple	<i>Acer saccharum</i>	56	F/G	G	G		5.5	Union at 1.3m and 3m	Remove
35	Black Cherry	<i>Prunus serotina</i>	49	F/G	G	F/G		6	Co-dominance at 1.8m	Remove
36	Red Oak	<i>Quercus rubra</i>	27.5	G	G	G		5		Remove
37	Red Oak	<i>Quercus rubra</i>	16	G	F/G	F		3.5	Asymmetrical crown (M), dead branches (L), epicormic branches L)	Remove
38	White Pine	<i>Pinus strobus</i>	13	G	G	PF		1.5	Sparse crown (H)	Remove
39	White Pine	<i>Pinus strobus</i>	57	G	G	F		4.5	Epicormic branches (L), asymmetrical crown (L)	Remove
40	Red Oak	<i>Quercus rubra</i>	11.5	G	G	G		2.5		Remove
41	White Pine	<i>Pinus strobus</i>	64.5	G	G	F/G		5		Remove
42	Green Ash	<i>Fraxinus pennsylvanica</i>	12	-	-	-	100	-	Dead	Remove
43	Sugar Maple	<i>Acer saccharum</i>	11.5	G	F/G	G		2	Asymmetrical crown (H)	Remove
44	Red Oak	<i>Quercus rubra</i>	49	G	G	G		7		Remove
45	White Pine	<i>Pinus strobus</i>	14	G	G	F		1.5		Remove
46	Trembling Aspen	<i>Populus tremuloides</i>	11.5	P	P	P	30	2.5	Lean (L), bow (M), sparse crown (M)	Remove
47	Trembling Aspen	<i>Populus tremuloides</i>	20	F/G	F/G	F		2	Lean (L), bow (L), asymmetrical crown (M)	Remove
48	Trembling Aspen	<i>Populus tremuloides</i>	22	F/G	F/G	P	40	2.5	Lean (L), dead leader, asymmetrical crown (M)	Remove
49	White Pine	<i>Pinus strobus</i>	12.5	G	G	P	80	1		Remove
50	Red Oak	<i>Quercus rubra</i>	24	G	G	G		4		Remove
51	White Pine	<i>Pinus strobus</i>	17.5	G	G	F		2		Remove
52	Green Ash	<i>Fraxinus pennsylvanica</i>	20.5	-	-	-	100	-	Dead	Remove

53	Red Oak	<i>Quercus rubra</i>	27	G	G	F	15	4.5	Asymmetrical crown (L)	Remove
54	Red Oak	<i>Quercus rubra</i>	35	G	G	G		5.5		Remove
55	White Pine	<i>Pinus strobus</i>	16	-	-	-	100	-		Remove
56	Red Oak	<i>Quercus rubra</i>	19	G	G	F/G		3.5	Lean (L)	Remove
57	Black Cherry	<i>Prunus serotina</i>	15	-	-	-	100	-	Failed to ground	Remove
58	Red Oak	<i>Quercus rubra</i>	29	G	G	G		4.5	Crook (L)	Remove
59	Red Oak	<i>Quercus rubra</i>	20.5	G	G	G		4.5	Crook (L)	Remove
60	Red Oak	<i>Quercus rubra</i>	24	G	F/G	F/G		4	Asymmetrical crown (M)	Remove
61	Sugar Maple	<i>Acer saccharum</i>	13.5	G	G	G		2.5		Remove
62	Sugar Maple	<i>Acer saccharum</i>	15	G	G	G		2.5		Remove
63	White Pine	<i>Pinus strobus</i>	68	G	G	F/G		6	Small crown	Remove
64	Sugar Maple	<i>Acer saccharum</i>	11, 10	F/G	F	F		2	Sparse crown (M), union at base	Remove
65	White Pine	<i>Pinus strobus</i>	54.5	G	G	F/G		5		Remove
66	White Pine	<i>Pinus strobus</i>	63	G	F	F		5		Remove
67	White Pine	<i>Pinus strobus</i>	61	F/G	G	G		5.5	Co-dominance at 5m	Remove
68	White Pine	<i>Pinus strobus</i>	63	G	G	G		6		Remove
69	White Birch	<i>Betula papyrifera</i>	31, 27	F/G	G	G		5	Union at base, lean (L)	Remove
70	Red Oak	<i>Quercus rubra</i>	25	G	G	G		4.5		Remove
71	Green Ash	<i>Fraxinus pennsylvanica</i>	35	-	-	-	100	-	Dead	Remove
72	American Beech	<i>Fagus grandifolia</i>	55	-	-	-	100	-	Dead	Remove
73	Basswood	<i>Tilia americana</i>	14	G	F/G	F		2	Asymmetrical crown (M), crook (L), skeletonized leaves	Remove
74	Sugar Maple	<i>Acer saccharum</i>	14.5, 10, 7	F/G	G	G		3	Union at base and 0.3m (3 stems), asymmetrical crown (L)	Remove
75	Basswood	<i>Tilia americana</i>	15	F/G	G	G		2.5	Crook (M)	Remove
76	Red Oak	<i>Quercus rubra</i>	30	G	G	G		5.5		Remove
77	Black Cherry	<i>Prunus serotina</i>	33	F/G	G	F/G		5	Crook (L), lean (L)	Remove
78	Sugar Maple	<i>Acer saccharum</i>	14.5	G	G	G		3	Asymmetrical crown (L)	Remove
79	Red Oak	<i>Quercus rubra</i>	22.5	G	G	G		4.5	Lean (VL), asymmetrical crown (L)	Remove
80	Basswood	<i>Tilia americana</i>	18.5	F/G	G	F		3	Crook (L), lean (VL), skeletonized leaves	Remove
81	White Birch	<i>Betula papyrifera</i>	21, 19, 18	F/G	G	F/G		4.5	Union at base, lean (L)	Remove
82	White Birch	<i>Betula papyrifera</i>	24	F/G	G	F		4	Lean (L), union at 2m, skeletonized leaves	Remove

83	Basswood	<i>Tilia americana</i>	22, 21, 12.5	F/G	G	F		4	Union at base (3 stems), skeletonized leaves	Remove
84	Basswood	<i>Tilia americana</i>	10	-	-	-	100	-	Dead	Remove
85	White Pine	<i>Pinus strobus</i>	78	G	G	G		6		Remove
86	Black Cherry	<i>Prunus serotina</i>	23, 21.5	F/G	G	F/G		4.5	Co-dominance at 1m with included bark (L)	Remove
87	Black Cherry	<i>Prunus serotina</i>	19, 14, 13.5	F	F/G	F	20	4	Union at base, lean (L)	Remove
88	White Pine	<i>Pinus strobus</i>	12.5	G	G	G		1.5		Remove
89	White Pine	<i>Pinus strobus</i>	28	G	G	G		2		Remove
90	White Pine	<i>Pinus strobus</i>	20	G	G	G		1.5		Remove
91	White Pine	<i>Pinus strobus</i>	33	G	G	G		2.5		Remove
92	White Pine	<i>Pinus strobus</i>	15	G	G	G		1.5		Remove
93	Basswood	<i>Tilia americana</i>	15.5	G	G	F		2.5	Skeletonized leaves	Remove
94	White Elm	<i>Ulmus americana</i>	37	-	-	-	100	-	Dead	Remove
95	White Pine	<i>Pinus strobus</i>	22	G	G	G		3		Remove
96	White Elm	<i>Ulmus americana</i>	33	F/G	G	F/G		3	Co-dominance in crown	Remove
97	White Pine	<i>Pinus strobus</i>	23	F/G	G	G		3	Union at 2m, grape vine competition (L)	Remove
98	White Pine	<i>Pinus strobus</i>	18	G	G	F		2		Remove
99	Basswood	<i>Tilia americana</i>	20.5	G	G	F	20	3.5	Skeletonized leaves	Remove
100	White Pine	<i>Pinus strobus</i>	24.5	G	G	G		3.5	Co-dominance in crown	Remove
101	Austrian Pine	<i>Pinus nigra</i>	17.5	G	G	G		2		Remove
102	Austrian Pine	<i>Pinus nigra</i>	13	G	G	G		1.5		Remove
103	Austrian Pine	<i>Pinus nigra</i>	15	F/G	G	G		1.5	Crook (L), asymmetrical crown (L)	Remove
104	White Pine	<i>Pinus strobus</i>	35	F/G	G	G		4	Crook (L), co-dominance in crown	Remove
105	Trembling Aspen	<i>Populus tremuloides</i>	19, 13	F/G	G	F/G		2	Union at base	Remove
106	White Pine	<i>Pinus strobus</i>	27	G	G	G		2.5		Remove
107	White Pine	<i>Pinus strobus</i>	17	G	G	G		1.5		Remove
108	White Pine	<i>Pinus strobus</i>	23	G	G	G		1.5		Remove
109	White Birch	<i>Betula papyrifera</i>	21, 11	F/G	G	F/G		2.5	Union at base, lean (L), asymmetrical crown (L)	Remove
110	Poplar Species	<i>Populus spp.</i>	13	-	-	-	100	-	Dead	Remove
111	Red Oak	<i>Quercus rubra</i>	18.5	G	G	G		3		Remove
112	Ironwood	<i>Ostrya virginiana</i>	12	F/G	G	G		2.5	Lean (L), crook (L)	Remove
113	White Pine	<i>Pinus strobus</i>	40	F/G	G	G		3.5	Union at 2 and 4m (3 stems)	Remove
114	White Pine	<i>Pinus strobus</i>	32	F/G	G	G		3.5	Union at 5m	Remove

115	White Pine	<i>Pinus strobus</i>	35.5	F/G	G	G		4	Union at 4m	Remove
116	White Pine	<i>Pinus strobus</i>	~30, 15	F	G	G		3	Union at 1, 2m and in crown (4 stems)	Remove
117	White Pine	<i>Pinus strobus</i>	21	G	G	G		2		Remove
118	White Pine	<i>Pinus strobus</i>	16	G	G	G		1.5		Remove
119	White Pine	<i>Pinus strobus</i>	~29, 18	-	-	-	100	-	Failed to ground	Remove
120	Red Oak	<i>Quercus rubra</i>	12.5	G	G	G		2		Remove
121	White Pine	<i>Pinus strobus</i>	14	G	G	P	40	1.5	Sparse crown (H)	Remove
122	Red Oak	<i>Quercus rubra</i>	16, 10, ~30, 29	F/G	G	G		5.5	Co-dominance at 0.3m, union at base (3 stems)	Remove
123	Basswood	<i>Tilia americana</i>	36, 34, 23	F	G	F	20	5	Union at base, stem wounds (M) at base, cavity on 1 stem	Remove
124	Black Cherry	<i>Prunus serotina</i>	16	F	G	F/G		3	Crook (M), lean (L)	Remove
125	Red Oak	<i>Quercus rubra</i>	34.5	G	G	F/G		5.5	Crook (L)	Remove
126	Sugar Maple	<i>Acer saccharum</i>	33, 31	F/G	G	G		5	Union at base, stem wounds (L)	Remove
127	Green Ash	<i>Fraxinus pennsylvanica</i>	40	-	-	-	100	-	Dead	Remove
128	Red Oak	<i>Quercus rubra</i>	42	G	G	G		6	Lean (VL)	Remove
129	Ironwood	<i>Ostrya virginiana</i>	26	F	F/G	F/G		3.5	Lean (L), crook (H), asymmetrical crown (M)	Remove
130	Sugar Maple	<i>Acer saccharum</i>	24, 23, 18	F/G	G	G		5	Union at base	Remove
131	Sugar Maple	<i>Acer saccharum</i>	~65, 27.5	P	G	G		7	Union at base, stem wound (H) at base ==> hazard	Remove
132	Basswood	<i>Tilia americana</i>	24, 23, 14	F	G	G		4	Union at base, lean (M), crook (L)	Remove
133	Basswood	<i>Tilia americana</i>	12	G	G	F		2.5	Asymmetrical crown (L), skeletonized leaves	Remove
134	Sugar Maple	<i>Acer saccharum</i>	13.5	G	G	G		2.		Remove
135	Red Oak	<i>Quercus rubra</i>	26	G	G	G		3.5	Lean (VL)	Remove
136	White Pine	<i>Pinus strobus</i>	~72	G	G	G		4		Remove
137	Red Oak	<i>Quercus rubra</i>	21	F/G	F/G	G		2	Lean (L), asymmetrical crown (M)	Remove
138	Sugar Maple	<i>Acer saccharum</i>	14	G	G	G		2.5		Remove
139	Sugar Maple	<i>Acer saccharum</i>	14.5	G	F/G	F/G		2.5	Epicormic branches (L), asymmetrical crown (M)	Remove
140	Poplar Species	<i>Populus spp.</i>	27	G	G	G		4		Remove
141	Sugar Maple	<i>Acer saccharum</i>	12.5	G	F/G	G		2	Asymmetrical crown (M)	Remove
142	White Pine	<i>Pinus strobus</i>	~75	F/G	G	G		6	Union at 2m (4 stems)	Remove
143	White Pine	<i>Pinus strobus</i>	17	G	G	G		1.5		Remove

144	White Pine	<i>Pinus strobus</i>	52	G	G	G		5.5		Remove
145	White Pine	<i>Pinus strobus</i>	~61	F/G	G	G		5.5	Co-dominance at 2m	Remove
146	Sugar Maple	<i>Acer saccharum</i>	13	G	G	G		2.5		Remove
147	Red Oak	<i>Quercus rubra</i>	45	F/G	G	F	10	6	Lean (L), dead branches (L)	Remove
148	Basswood	<i>Tilia americana</i>	27, 25, 22	F/G	G	F	20	4	Union at base (3 stems)	Remove
149	Basswood	<i>Tilia americana</i>	16.5	G	G	F		3	Skeletonized leaves	Remove
150	Red Oak	<i>Quercus rubra</i>	12	G	G	G		2		Remove
151	Red Oak	<i>Quercus rubra</i>	15	F/G	F	G		2	Bow (L), asymmetrical crown (M)	Remove
152	Basswood	<i>Tilia americana</i>	15.5, 8	F/G	F/G	F		2	Lean (L), bow (L), asymmetrical crown (M), skeletonized leaves	Remove
153	Sugar Maple	<i>Acer saccharum</i>	46	P/F	G	F/G		5.5	Stem wound (M) at base, lean (L), union at 2m	Remove
154	Ironwood	<i>Ostrya virginiana</i>	16, 12	P/F	F	F	20	3.5	Union at base, crook (H), dead branches (M), larger stem lost leader at 2.5m	Remove
155	Basswood	<i>Tilia americana</i>	22, 19, 15	F/G	G	F	20	3.5	Union at base, lean (L), skeletonized leaves	Remove
156	Sugar Maple	<i>Acer saccharum</i>	22	F/G	G	F/G		4	Stem wound (L), epicormic branches (H)	Remove
157	Basswood	<i>Tilia americana</i>	13	G	G	F		2		Remove
158	Ironwood	<i>Ostrya virginiana</i>	12.5	F	F	F/G		1.5	Crook (H), bow (L)	Remove
159	Sugar Maple	<i>Acer saccharum</i>	23, 18, 13	F/G	F/G	G		3.5	Union at base, asymmetrical crown (L)	Remove
160	Red Oak	<i>Quercus rubra</i>	20	F/G	F	G		3	Lean (L), asymmetrical crown (M)	Remove
161	Red Oak	<i>Quercus rubra</i>	24, 19	F/G	G	F/G		3	Union at 0.5m with included bark (L), asymmetrical crown (L)	Remove
162	Green Ash	<i>Fraxinus pennsylvanica</i>	17.5	-	-	-	100	-	Dead	Remove
163	Basswood	<i>Tilia americana</i>	30, 20, 16, 10	F/G	G	PF	25	3.5	Union at base, skeletonized leaves	Remove
164	Red Oak	<i>Quercus rubra</i>	21, 11	F	F/G	G		4	Asymmetrical crown (L), union at 0.3m, stem wounds (M) due to failed tree	Remove
165	Ironwood	<i>Ostrya virginiana</i>	12.5	P/F	F	F	30	1.5	Co-dominance at 1.7m, 1 stem dead	Remove
166	Sugar Maple	<i>Acer saccharum</i>	12.5, 6.5	G	G	G		1.5		Remove
167	Sugar Maple	<i>Acer saccharum</i>	13.5	G	G	G		2.5		Remove
168	Sugar Maple	<i>Acer saccharum</i>	13	G	G	G		2		Remove
169	Sugar Maple	<i>Acer saccharum</i>	21, 15	F/G	G	G		3	Union at base, asymmetrical crown (L)	Remove

170	Sugar Maple	<i>Acer saccharum</i>	16	G	G	G		2.5		Remove
171	White Pine	<i>Pinus strobus</i>	~22, 22	F/G	G	G		3	Union at 0.5m	Remove
172	Austrian Pine	<i>Pinus nigra</i>	18	F/G	G	G		2	Co-dominance at 2m	Remove
173	White Pine	<i>Pinus strobus</i>	22	G	G	G		2		Remove
174	White Pine	<i>Pinus strobus</i>	23	G	G	G		2	Crook (L)	Remove
175	White Pine	<i>Pinus strobus</i>	16	G	G	G		1.5		Remove
176	Red Oak	<i>Quercus rubra</i>	16.5	G	G	G		2.5		Remove
177	Trembling Aspen	<i>Populus tremuloides</i>	10, 8	-	-	-	100	-	Dead, union at base	Remove
178	Trembling Aspen	<i>Populus tremuloides</i>	10	-	-	-	100	-	Dead	Remove
179	White Pine	<i>Pinus strobus</i>	14	G	G	G		1.5		Remove
180	Poplar Species	<i>Populus spp.</i>	10.5	-	-	-	100	2	Failed to ground	Remove
181	White Pine	<i>Pinus strobus</i>	~22	-	-	-	100	-	Dead	Remove
182	Alder Species	<i>Alnus spp.</i>	13, 12, 10.5	F/G	G	F		2	Union at base	Remove
183	Trembling Aspen	<i>Populus tremuloides</i>	13.5	-	-	-	100	-	Failed to ground	Remove
184	Trembling Aspen	<i>Populus tremuloides</i>	12.5	-	-	-	100	-	Dead	Remove
185	Trembling Aspen	<i>Populus tremuloides</i>	16.5	-	-	-	100	-	Dead	Remove
186	Red Oak	<i>Quercus rubra</i>	18	G	G	F/G		3		Remove
187	Trembling Aspen	<i>Populus tremuloides</i>	13.5	-	-	-	100	-	Dead	Remove
188	Trembling Aspen	<i>Populus tremuloides</i>	14	-	-	-	100	-	Dead	Remove
189	Basswood	<i>Tilia americana</i>	13.5	G	G	G		1.5		Remove
190	White Pine	<i>Pinus strobus</i>	13.5	G	G	G		1.5		Remove
191	White Pine	<i>Pinus strobus</i>	20	G	G	G		2.5		Remove
192	Austrian Pine	<i>Pinus nigra</i>	18, 12	F/G	G	F		2	Union at 0.5m	Remove
193	White Pine	<i>Pinus strobus</i>	19	G	G	P	50	2		Remove
194	Scots Pine	<i>Pinus sylvestris</i>	24	-	-	-	100	-	Dead	Remove
195	Trembling Aspen	<i>Populus tremuloides</i>	10.5	G	G	P	40	1.5		Remove
196	White Pine	<i>Pinus strobus</i>	15	-	-	-	100	-	Dead	Remove
197	Red Oak	<i>Quercus rubra</i>	14.5	G	G	G		2.5		Remove
198	White Pine	<i>Pinus strobus</i>	15	G	G	P/F	20	1.5		Remove
199	Poplar Species	<i>Populus spp.</i>	16	-	-	-	100	-	Dead	Remove
200	White Pine	<i>Pinus strobus</i>	11	-	-	-	100	-	Dead	Remove
201	White Pine	<i>Pinus strobus</i>	11.5	G	G	F		1.5		Remove
202	Trembling Aspen	<i>Populus tremuloides</i>	20, 19	F/G	G	P/F	30	3	Co-dominance at 0.5m with included bark (M)	Remove
203	Trembling Aspen	<i>Populus tremuloides</i>	11.5	F/G	G	P	40	1	Crook (M)	Remove

204	Trembling Aspen	<i>Populus tremuloides</i>	18	F/G	G	F		2.5	Lean (L)	Remove
205	Trembling Aspen	<i>Populus tremuloides</i>	18	G	G	P/F	30	3	Lean (VL)	Remove
206	Trembling Aspen	<i>Populus tremuloides</i>	12.5	-	-	-	100	-	Deaed	Remove
207	Trembling Aspen	<i>Populus tremuloides</i>	16.5	-	-	-	100	-	Dead	Remove
208	Trembling Aspen	<i>Populus tremuloides</i>	15.5	P/F	G	P/F	25	1.5	Asymmetrical crown (L), crack	Remove
209	Trembling Aspen	<i>Populus tremuloides</i>	12	G	G	P/F	30	1		Remove
210	Trembling Aspen	<i>Populus tremuloides</i>	21, 20	F/G	G	P/F	30	2.5	Co-dominance at base	Remove
211	Trembling Aspen	<i>Populus tremuloides</i>	20	-	-	-	100	-	Dead	Remove
212	Poplar Species	<i>Populus spp.</i>	20	-	-	-	100	-	Dead	Remove
213	White Pine	<i>Pinus strobus</i>	17	G	G	G		2		Remove
214	White Spruce	<i>Picea glauca</i>	15	G	G	F/G		1.5		Remove
215	Trembling Aspen	<i>Populus tremuloides</i>	17	F/G	G	G		2	Bow (L)	Remove
216	Trembling Aspen	<i>Populus tremuloides</i>	17	-	-	-	100	-	Failed to ground	Remove
217	White Spruce	<i>Picea glauca</i>	16	G	G	G		1.5		Remove
218	White Spruce	<i>Picea glauca</i>	10	-	-	-	100	-	Failed to ground	Remove
219	Trembling Aspen	<i>Populus tremuloides</i>	10.5	-	-	-	100	-	Dead	Remove
220	Trembling Aspen	<i>Populus tremuloides</i>	12.5	-	-	-	100	-	Dead	Remove
221	White Spruce	<i>Picea glauca</i>	17	G	G	F		1.5		Remove
222	White Spruce	<i>Picea glauca</i>	~20	G	G	F		1.5		Remove
223	White Pine	<i>Pinus strobus</i>	16	G	G	G		1.5		Remove
224	Trembling Aspen	<i>Populus tremuloides</i>	19	G	G	F/G		2.5		Remove
225	White Pine	<i>Pinus strobus</i>	22	G	G	G		2.5		Remove
226	Trembling Aspen	<i>Populus tremuloides</i>	18	G	G	F		1.5		Remove
227	White Spruce	<i>Picea glauca</i>	18	F/G	G	F		1.5	Stem wound (M)	Remove
228	Trembling Aspen	<i>Populus tremuloides</i>	13.5	-	-	-	100	-	Dead	Remove
229	Trembling Aspen	<i>Populus tremuloides</i>	18	G	G	P/F	30	1.5		Remove
230	Trembling Aspen	<i>Populus tremuloides</i>	10	-	-	-	100	-	Dead	Remove
231	White Spruce	<i>Picea glauca</i>	~18	G	G	P	60	1.5	Dead leader	Remove
232	Trembling Aspen	<i>Populus tremuloides</i>	15.5	F	G	P	30	1.5	Stem wound (M) near base	Remove
233	Trembling Aspen	<i>Populus tremuloides</i>	10.5, 9	-	-	-	100	4	Dead, union at base	Remove
234	Trembling Aspen	<i>Populus tremuloides</i>	14	-	-	-	100	-	Failed to ground	Remove
235	Trembling Aspen	<i>Populus tremuloides</i>	16	G	G	P	40	1.5	Asymmetrical crown (L), dead leader	Remove
236	Austrian Pine	<i>Pinus nigra</i>	14	G	G	G		1.5		Remove
237	Trembling Aspen	<i>Populus tremuloides</i>	11.5	-	-	-	100	-	Dead	Remove
238	Trembling Aspen	<i>Populus tremuloides</i>	15.5	F/G	G	P/F	20	1.5	Crook (L), sweep (L)	Remove

239	Trembling Aspen	<i>Populus tremuloides</i>	16	G	F/G	P/F	30	1.5	Crook (L), dead branches (M)	Remove
240	Austrian Pine	<i>Pinus nigra</i>	16	-	-	-	100	-	Dead	Remove
241	Red Oak	<i>Quercus rubra</i>	21	G	F/G	G		3.5	Lean (L), asymmetrical crown (M)	Remove
242	Sugar Maple	<i>Acer saccharum</i>	40, 38	P/F	G	G		7	Co-dominance at 1m with included bark (M), stem wound (M) at base	Remove
243	Sugar Maple	<i>Acer saccharum</i>	16, 13	F/G	F/G	F/G		2.5	Union at 0.5m with included bark (M), asymmetrical crown (M), epicormic branches (L)	Remove
244	Sugar Maple	<i>Acer saccharum</i>	14, 9	F/G	G	F	10	3	Union at base, dead branches (L)	Remove
245	Basswood	<i>Tilia americana</i>	42, 24	F/G	G	F		4	Union at base, skeletonized leaves	Remove
246	Red Oak	<i>Quercus rubra</i>	54	G	G	F/G		6		Remove
247	Sugar Maple	<i>Acer saccharum</i>	33	F/G	G	G		4.5	Co-dominance at 4m with included bark (M)	Remove
248	Sugar Maple	<i>Acer saccharum</i>	43, 11	P	F/G	F		5	Canker (H) at base, asymmetrical crown (M) ==> hazard	Remove
249	Basswood	<i>Tilia americana</i>	25	F/G	G	F		4	Union at base, skeletonized leaves	Remove
250	White Pine	<i>Pinus strobus</i>	19	G	G	G		2		Remove
251	White Spruce	<i>Picea glauca</i>	~23	G	G	G		2		Remove
252	Sugar Maple	<i>Acer saccharum</i>	16	G	G	G		2.5		Remove
253	White Pine	<i>Pinus strobus</i>	16	G	G	G		1.5	Also tagged 680	Remove
254	White Spruce	<i>Picea glauca</i>	~24	P	G	F	15	2	Crack	Remove
255	White Spruce	<i>Picea glauca</i>	18	G	G	F		1.5		Remove
256	White Spruce	<i>Picea glauca</i>	19	F/G	G	F		2	Crook (L), sweep (L)	Remove
257	White Pine	<i>Pinus strobus</i>	~26	F/G	G	G		2.5	Crook (L), grape vine competition (H)	Remove
258	Green Ash	<i>Fraxinus pennsylvanica</i>	11	-	-	-	100	-	Dead	Remove
259	Red Oak	<i>Quercus rubra</i>	19	G	G	G		2.5		Preserve
260	Red Oak	<i>Quercus rubra</i>	21	G	G	G		3		Preserve
261	Ironwood	<i>Ostrya virginiana</i>	10	G	G	G		2		Remove
262	Red Oak	<i>Quercus rubra</i>	22	G	G	G		3		Remove
263	White Spruce	<i>Picea glauca</i>	~21	G	G	G		1.5		Remove
264	White Spruce	<i>Picea glauca</i>	16	G	G	G		1.5		Remove
265	White Pine	<i>Pinus strobus</i>	22	G	G	G		1.5		Remove
266	White Pine	<i>Pinus strobus</i>	10	-	-	-	100	-	Dead	Remove
267	Basswood	<i>Tilia americana</i>	20, 11	F/G	F/G	F	15	3	Union at base, asymmetrical crown (M), bow (L), skeletonized leaves	Remove

268	Basswood	<i>Tilia americana</i>	29, 28, 12, 11.5	F/G	G	P/F	20	4	Union at base, dead branches (L), skeletonized leaves	Remove
269	White Pine	<i>Pinus strobus</i>	~30	G	G	G		3		Remove
270	White Spruce	<i>Picea glauca</i>	~21	G	G	G		2		Remove
271	White Pine	<i>Pinus strobus</i>	16	G	G	G		2		Remove
272	White Elm	<i>Ulmus americana</i>	~25	-	-	-	100	-	Dead	Remove
NT273	Elm Species	<i>Ulmus spp.</i>	~20, 15	-	-	-	100	6	Dead	Remove
NT274	Elm Species	<i>Ulmus spp.</i>	~20, 15	-	-	-	100	4	Dead	Remove
275	White Pine	<i>Pinus strobus</i>	~28	G	G	G		4		Remove
276	Manitoba maple	<i>Acer negundo</i>	~40, 30, 25	F/G	G	P	30	3.5	Union at 0.5m and 1.2m with included bark (M), crook (L), lean (L)	Preserve
P277	Eastern White Cedar	<i>Thuja occidentalis</i>	10-25 (avg. 18)	F/G	G	G		2	Row of 10 trees	Preserve
278	Green Ash	<i>Fraxinus pennsylvanica</i>	22, 21	-	-	-	100	-	Dead, covered with grape vine	Remove
279	White Pine	<i>Pinus strobus</i>	~18	G	G	G		3		Remove
280	White Pine	<i>Pinus strobus</i>	~32	G	G	G		4		Remove
281	White Pine	<i>Pinus strobus</i>	~35	G	G	G		4.5		Remove
282	White Pine	<i>Pinus strobus</i>	27	G	G	G		3		Remove
283	Trembling Aspen	<i>Populus tremuloides</i>	10.5	G	G	P		1		Remove
284	Red Oak	<i>Quercus rubra</i>	14	G	G	G		2		Remove
285	White Birch	<i>Betula papyrifera</i>	31, 24	F/G	G	P	50	3	Union at 0.6m with included bark (M), dead branches (M), broken branches (M)	Remove
286	Austrian Pine	<i>Pinus nigra</i>	13	G	G	F	20	1	Asymmetrical crown (L)	Remove
287	Austrian Pine	<i>Pinus nigra</i>	17	G	G	P/F	20	1.5	Asymmetrical crown (L), sparse crown (H)	Remove
288	Alder Species	<i>Alnus spp.</i>	14	G	G	F		1.5		Remove
289	Red Oak	<i>Quercus rubra</i>	10	G	G	F/G	15	2		Remove
290	Red Oak	<i>Quercus rubra</i>	51	G	G	F/G	15	5	Lean (L)	Remove
291	White Pine	<i>Pinus strobus</i>	15	G	G	G		1.5		Remove
292	Poplar Species	<i>Populus spp.</i>	11.5	-	-	-	100	-	Dead	Remove
293	Poplar Species	<i>Populus spp.</i>	23	-	-	-	100	-	Dead	Remove
294	Scots Pine	<i>Pinus sylvestris</i>	14	G	G	P	40	2		Remove
295	Scots Pine	<i>Pinus sylvestris</i>	18	F/G	G	G		1.5	Union at 2m	Remove
296	White Pine	<i>Pinus strobus</i>	~31	G	G	G		2		Remove
297	White Spruce	<i>Picea glauca</i>	14.5	G	G	F/G		2.5		Remove

298	Trembling Aspen	<i>Populus tremuloides</i>	20	G	G	F/G		2		Remove
299	White Pine	<i>Pinus strobus</i>	19.5	G	G	G		2		Remove
300	Austrian Pine	<i>Pinus nigra</i>	~27	G	G	F/G		1.5	Asymmetrical crown (L)	Remove
301	White Pine	<i>Pinus strobus</i>	~28	G	G	G		3.5		Remove
302	White Pine	<i>Pinus strobus</i>	21	G	G	G		3.5		Remove
303	Austrian Pine	<i>Pinus nigra</i>	~20	G	G	G		2		Remove
304	Austrian Pine	<i>Pinus nigra</i>	15	G	G	G		2		Remove
305	Green Ash	<i>Fraxinus pennsylvanica</i>	10	-	-	-	100	-	Dead	Remove
306	Green Ash	<i>Fraxinus pennsylvanica</i>	11.5	-	-	-	100	-	Dead	Remove
307	Austrian Pine	<i>Pinus nigra</i>	~22, 21	F/G	G	G		2.5	Co-dominance at 0.5m with included bark (L), grape vine competition (M)	Preserve
308	Austrian Pine	<i>Pinus nigra</i>	27	F/G	G	G		2.5	Co-dominance in crown	Remove
309	Austrian Pine	<i>Pinus nigra</i>	13	F	G	G		1	Crook (M), sweep (M)	Remove
310	Austrian Pine	<i>Pinus nigra</i>	18	F/G	G	G		1	Crook (L), Virginia creeper (M), grape vine competition (L)	Remove
311	Austrian Pine	<i>Pinus nigra</i>	23	G	G	G		2		Remove
312	Austrian Pine	<i>Pinus nigra</i>	14	G	G	G		1		Remove
313	Austrian Pine	<i>Pinus nigra</i>	21	F/G	G	G		1.5	Lean (L)	Preserve
314	White Pine	<i>Pinus strobus</i>	32	G	G	G		2.5		Remove
315	White Spruce	<i>Picea glauca</i>	29	G	G	G		2		Remove
316	Scots Pine	<i>Pinus sylvestris</i>	16	F/G	G	G		1.5	Co-dominance in crown, grape vine competition (M), Virginia creeper (M)	Remove
317	Trembling Aspen	<i>Populus tremuloides</i>	11, 9	F	G	F		1.5	Co-dominance at 0.1m, crook (H)	Remove
318	Trembling Aspen	<i>Populus tremuloides</i>	24	F/G	G	G		2.5	Crook (L)	Remove
319	Austrian Pine	<i>Pinus nigra</i>	16	G	G	G		1.5		Remove
320	Trembling Aspen	<i>Populus tremuloides</i>	25.5	F/G	G	G		2.5	Crook (L)	Remove
321	Trembling Aspen	<i>Populus tremuloides</i>	31	G	G	G		3.5		Remove
322	Austrian Pine	<i>Pinus nigra</i>	13	G	G	F/G		1		Remove
323	Trembling Aspen	<i>Populus tremuloides</i>	17	-	-	-	100	-	Dead	Remove
324	Scots Pine	<i>Pinus sylvestris</i>	21	G	F/G	F		1.5	Asymmetrical crown (M)	Remove
325	White Pine	<i>Pinus strobus</i>	42	F/G	G	G		3.5	Co-dominance at 4m	Remove
326	White Pine	<i>Pinus strobus</i>	~80	F/G	G	G		5	Co-dominance at 4m (5 stems)	Remove
327	Red Oak	<i>Quercus rubra</i>	11.5	G	G	F	20	1.5		Remove
328	Austrian Pine	<i>Pinus nigra</i>	15.5	G	G	F		1.5		Remove
329	White Pine	<i>Pinus strobus</i>	15	G	G	G		1.5		Remove

330	Austrian Pine	<i>Pinus nigra</i>	12.5	G	G	F		1		Remove
331	White Pine	<i>Pinus strobus</i>	14	G	G	F/G		1.5		Remove
332	White Pine	<i>Pinus strobus</i>	15	F/G	G	G		1.5	Union at 2m	Remove
333	Austrian Pine	<i>Pinus nigra</i>	16	G	G	F		1.5		Remove
334	Red Oak	<i>Quercus rubra</i>	16	G	G	G		1.5		Remove
335	White Pine	<i>Pinus strobus</i>	10.5	-	-	-	100	-	Dead	Remove
336	White Birch	<i>Betula papyrifera</i>	12.5, 11.5	F/G	F/G	F/G		1.5	Co-dominance at base, asymmetrical crown (M)	Remove
337	White Pine	<i>Pinus strobus</i>	12	G	G	F		1		Remove
338	White Pine	<i>Pinus strobus</i>	17	G	G	F/G		1.5		Remove
339	White Pine	<i>Pinus strobus</i>	19	G	G	G		2.5		Remove
340	Austrian Pine	<i>Pinus nigra</i>	26	G	G	G		2.5		Remove
341	Red Oak	<i>Quercus rubra</i>	12	G	G	G		2		Remove
342	Trembling Aspen	<i>Populus tremuloides</i>	27	F	G	P	90	2	Crook (L)	Remove
343	Red Oak	<i>Quercus rubra</i>	25.5	G	G	G		3.5		Remove
344	White Pine	<i>Pinus strobus</i>	14	G	G	G		1.5		Remove
345	Trembling Aspen	<i>Populus tremuloides</i>	18, 17	-	-	-	100	-	Dead, union at base	Remove
346	White Pine	<i>Pinus strobus</i>	13	G	F/G	G		1.5	Asymmetrical crown (M)	Remove
347	White Pine	<i>Pinus strobus</i>	16	G	G	F		1.5		Remove
348	Red Oak	<i>Quercus rubra</i>	11	G	G	G		2		Remove
349	Sugar Maple	<i>Acer saccharum</i>	13	F/G	G	G		2.5	Union at 0.3m with included bark (M)	Remove
350	Black Cherry	<i>Prunus serotina</i>	28	F	F/G	F/G		3.5	Union at 0.2m, smaller stem lean (H), co-dominance at 1.5m	Remove
351	White Pine	<i>Pinus strobus</i>	24	G	G	G		2.5		Remove
352	White Pine	<i>Pinus strobus</i>	11.5	-	-	-	100	-	Dead	Remove
353	Sugar Maple	<i>Acer saccharum</i>	16.5	G	G	G		2.5	Asymmetrical crown (L)	Remove
354	Sugar Maple	<i>Acer saccharum</i>	16.5	G	G	G		3		Remove
355	Trembling Aspen	<i>Populus tremuloides</i>	22	-	-	-	100	-	Dead	Remove
356	Trembling Aspen	<i>Populus tremuloides</i>	19	F/G	G	G		1.5	Lean (L)	Remove
357	Red Oak	<i>Quercus rubra</i>	29.5	F/G	G	G		4.5	Lean (L)	Remove
358	White Birch	<i>Betula papyrifera</i>	41	G	G	F	20	5	Grape vine competition (M)	Remove
359	Trembling Aspen	<i>Populus tremuloides</i>	11.5	F/G	G	F		1	Bow (L), crook (L)	Remove
360	White Pine	<i>Pinus strobus</i>	15	G	G	G		1.5		Remove
361	Trembling Aspen	<i>Populus tremuloides</i>	21.5	G	G	G		1.5		Remove
362	Trembling Aspen	<i>Populus tremuloides</i>	16	-	-	-	100		Dead	Remove

363	Trembling Aspen	<i>Populus tremuloides</i>	19.5	F/G	G	G		1.5	Lean (L)	Remove
364	Trembling Aspen	<i>Populus tremuloides</i>	13.5, 12.5	P	P	P	90	1	Union at base, both stems lost leader at 4m, stem wound (M), asymmetrical crown (L)	Remove
365	Scots Pine	<i>Pinus sylvestris</i>	12.5	F/G	G	P/F	30	1	Union at 2m	Remove
366	White Pine	<i>Pinus strobus</i>	28.5	F/G	G	G		2.5	Union at 3m	Remove
367	Silver Maple	<i>Acer saccharinum</i>	38	F/G	P/F	P/F	30	3.5	Dead branches (L), union at 1.3m, sparse crown (H)	Preserve
368	Trembling Aspen	<i>Populus tremuloides</i>	10	-	-	-	100		Dead	Remove
369	Scots Pine	<i>Pinus sylvestris</i>	14	F/G	G	P	40	1	Crook (L), dead leader	Remove
370	Trembling Aspen	<i>Populus tremuloides</i>	12.5	G	G	F		1		Remove
371	White Pine	<i>Pinus strobus</i>	20.5	G	G	G		2		Remove
372	Trembling Aspen	<i>Populus tremuloides</i>	17	F/G	G	G		1.5	Crook (L)	Remove
373	White Spruce	<i>Picea glauca</i>	21	G	G	P/F		2	Sap oozing	Remove
374	White Pine	<i>Pinus strobus</i>	20	G	G	G		2		Remove
375	-	-	15	-	-	-	100		Dead	Remove
376	Red Oak	<i>Quercus rubra</i>	15	F/G	F/G	G		2	Lean (L), asymmetrical crown (M)	Remove
377	Scots Pine	<i>Pinus sylvestris</i>	17.5	G	G	F		1		Remove
378	White Pine	<i>Pinus strobus</i>	28	F/G	G	P/F	40	2.5	Union at 3m	Remove
379	White Pine	<i>Pinus strobus</i>	20	G	G	G		2		Remove
380	White Pine	<i>Pinus strobus</i>	22.5	G	G	G		2		Remove
381	Trembling Aspen	<i>Populus tremuloides</i>	18	-	-	-	100	-	Dead	Remove
382	Trembling Aspen	<i>Populus tremuloides</i>	11	P/F	F	F		3	Lean (M), bow (M)	Remove
383	White Birch	<i>Betula papyrifera</i>	37.5	G	G	F/G		4.5		Remove
384	Basswood	<i>Tilia americana</i>	16.5	G	G	G		2	Crook (L), skeletonized leaves	Remove
385	White Pine	<i>Pinus strobus</i>	27	F/G	G	G		2.5	Sweep (L)	Remove
386	White Pine	<i>Pinus strobus</i>	23	G	G	G		2		Remove
387	White Pine	<i>Pinus strobus</i>	21	G	G	G		2		Remove
388	Red Oak	<i>Quercus rubra</i>	19.5	G	G	G		3		Remove
389	Trembling Aspen	<i>Populus tremuloides</i>	14	G	G	G		1		Remove
390	Trembling Aspen	<i>Populus tremuloides</i>	13	F/G	G	G		1	Lean (L), crook (L)	Remove
391	Trembling Aspen	<i>Populus tremuloides</i>	11.5	G	G	G		1	Crook (L)	Remove
392	White Pine	<i>Pinus strobus</i>	35	G	G	G		3.5		Remove
393	White Pine	<i>Pinus strobus</i>	27	G	G	G		3		Remove
394	White Pine	<i>Pinus strobus</i>	17	G	G	G		1.5		Remove

395	White Pine	<i>Pinus strobus</i>	27	F/G	G	G		2	Co-dominance at 0.3m	Remove
396	White Pine	<i>Pinus strobus</i>	25	G	F/G	G		2.5	Asymmetrical crown (M), Virginia creeper (L)	Remove
397	White Pine	<i>Pinus strobus</i>	37	G	G	G		2.5		Remove
398	White Pine	<i>Pinus strobus</i>	12	G	G	G		1		Remove
399	White Pine	<i>Pinus strobus</i>	15	G	G	G		1.5		Remove
400	Basswood	<i>Tilia americana</i>	25, 23, 21, 20, 20	F	G	G		4.5	Union at base (5 stems), crook (L), lean (L-M)	Remove
401	White Birch	<i>Betula papyrifera</i>	23, 17	F/G	G	F		2.5	Union at base, spiral stems, bow (L), asymmetrical crown (L), skeletonized leaves	Remove
402	White Pine	<i>Pinus strobus</i>	23	F/G	G	G		2	Co-dominance in crown, crook (L)	Remove
403	White Pine	<i>Pinus strobus</i>	35	F/G	G	G		3.5	Co-dominance at 3m	Remove
404	White Pine	<i>Pinus strobus</i>	38	G	G	F		3.5		Remove
405	White Pine	<i>Pinus strobus</i>	24	G	G	G		3		Remove
406	White Pine	<i>Pinus strobus</i>	21	F/G	G	G		2	Union at 1m with included bark (L), co-dominance at 3m	Remove
407	White Pine	<i>Pinus strobus</i>	21	G	G	F		2	Asymmetrical crown (L)	Remove
408	White Pine	<i>Pinus strobus</i>	33	G	G	G		2.5		Remove
409	Trembling Aspen	<i>Populus tremuloides</i>	12.5	G	G	G		1		Remove
410	Trembling Aspen	<i>Populus tremuloides</i>	12.5	G	G	G		1		Remove
411	White Pine	<i>Pinus strobus</i>	23	F/G	G	G		3	Crook (L), co-dominance in crown	Remove
412	Trembling Aspen	<i>Populus tremuloides</i>	14.5	G	G	G		1.5		Remove
413	Trembling Aspen	<i>Populus tremuloides</i>	17.5	F/G	F/G	F/G		1.5	Asymmetrical crown (L), crook (L)	Remove
414	Trembling Aspen	<i>Populus tremuloides</i>	14.5	G	F	F	20	1		Remove
415	Trembling Aspen	<i>Populus tremuloides</i>	14	F	G	F		1	Stem wound (L), crook (L)	Remove
416	White Pine	<i>Pinus strobus</i>	15	G	G	G		1.5		Remove
417	Trembling Aspen	<i>Populus tremuloides</i>	13	G	G	F		1	Asymmetrical crown (L)	Remove
418	Trembling Aspen	<i>Populus tremuloides</i>	19	G	G	G		2		Remove
419	Trembling Aspen	<i>Populus tremuloides</i>	19	G	G	G		1.5	Asymmetrical crown (L)	Remove
420	Trembling Aspen	<i>Populus tremuloides</i>	21	G	G	G		2	Asymmetrical crown (L)	Remove
421	Trembling Aspen	<i>Populus tremuloides</i>	15.5	G	G	G		1.5		Remove
422	Trembling Aspen	<i>Populus tremuloides</i>	23.5	G	G	G		2.5		Remove
423	Trembling Aspen	<i>Populus tremuloides</i>	19.5	G	G	G		2.5	Asymmetrical crown (L)	Remove
424	Trembling Aspen	<i>Populus tremuloides</i>	12	F	F/G	F		1	Bow (L), crook (L)	Remove

425	Trembling Aspen	<i>Populus tremuloides</i>	20	-	-	-	100	-	Dead	Remove
426	Trembling Aspen	<i>Populus tremuloides</i>	21	F/G	F/G	G		1.5	Lean (L), crook (L), asymmetrical crown (M)	Remove
427	Red Oak	<i>Quercus rubra</i>	16	G	F/G	G		3	Asymmetrical crown (M)	Remove
428	Trembling Aspen	<i>Populus tremuloides</i>	12.5	F/G	F/G	F/G		1	Bow (L), asymmetrical crown (M)	Remove
429	Black Cherry	<i>Prunus serotina</i>	31	F/G	G	F/G		3	Co-dominance at 2m with included bark (M)	Remove
430	Trembling Aspen	<i>Populus tremuloides</i>	13	-	-	-	100	-	Dead	Remove
431	Trembling Aspen	<i>Populus tremuloides</i>	17	G	G	F		1.5	Lean (VL), asymmetrical crown (L)	Remove
432	White Spruce	<i>Picea glauca</i>	18	F/G	G	G		1.5	Lean (L)	Remove
433	White Pine	<i>Pinus strobus</i>	16	G	G	G		1		Remove
434	White Spruce	<i>Picea glauca</i>	18	G	G	F		1.5	Crook (L)	Remove
435	Scots Pine	<i>Pinus sylvestris</i>	26.5	F	G	F		2	Wood pecker damage (L), co-dominance in crown, sparse crown (M)	Remove
436	Red Oak	<i>Quercus rubra</i>	13	G	G	G		2		Remove
437	White Spruce	<i>Picea glauca</i>	12.5	G	G	P	60	1	Sparse crown (H)	Remove
438	Sugar Maple	<i>Acer saccharum</i>	14.5	G	G	G		2		Remove
439	Trembling Aspen	<i>Populus tremuloides</i>	11	-	-	-	100	-	Dead	Remove
440	Trembling Aspen	<i>Populus tremuloides</i>	12.5	-	-	-	100	-	Failed to ground	Remove
441	Sugar Maple	<i>Acer saccharum</i>	19	G	G	G		3.5		Remove
442	Trembling Aspen	<i>Populus tremuloides</i>	14	F/G	G	G		1.5	Crook (L)	Remove
443	Trembling Aspen	<i>Populus tremuloides</i>	10	F	F	F		1	Asymmetrical crown (H), crook (M)	Remove
444	Trembling Aspen	<i>Populus tremuloides</i>	13	F/G	F/G	F		1	Crook (L), asymmetrical crown (M)	Remove
445	Trembling Aspen	<i>Populus tremuloides</i>	12.5	-	-	-	100	-	Dead	Remove
446	Trembling Aspen	<i>Populus tremuloides</i>	10.5	G	G	P	60	1	Sparse crown (M)	Remove
447	Trembling Aspen	<i>Populus tremuloides</i>	13	F/G	G	G		1.5	Crook (L), asymmetrical crown (L)	Remove
448	Trembling Aspen	<i>Populus tremuloides</i>	17	G	G	F	20	1.5		Remove
449	Trembling Aspen	<i>Populus tremuloides</i>	13	-	-	-	100	-	Dead	Remove
450	Trembling Aspen	<i>Populus tremuloides</i>	13	-	-	-	100	-	Dead	Remove
451	Poplar Species	<i>Populus spp.</i>	18	F/G	G	P/F		1.5	Crook (L), epicormic branches (M), chlorosis (H)	Remove
452	Trembling Aspen	<i>Populus tremuloides</i>	10.5	-	-	-	100	-	Dead	Remove
453	Red Oak	<i>Quercus rubra</i>	48	F/G	G	F/G	15	5.5	Co-dominance at 4m	Remove
454	Trembling Aspen	<i>Populus tremuloides</i>	11	G	F	F	50	1	Dead branches (H), sparse crown (M)	Remove
455	Trembling Aspen	<i>Populus tremuloides</i>	15	-	-	-	100	-	Failed to ground	Remove
456	White Pine	<i>Pinus strobus</i>	21, 20	F/G	G	G		2	Co-dominance at base	Remove

457	White Spruce	<i>Picea glauca</i>	18	-	-	-	100	-	Dead	Remove
458	Trembling Aspen	<i>Populus tremuloides</i>	31, 26	F/G	G	P/F	30	3	Co-dominance at base, sparse crown (M)	Remove
459	White Spruce	<i>Picea glauca</i>	12	G	G	F		1.5		Remove
460	White Spruce	<i>Picea glauca</i>	23	G	G	F		2.5		Remove
461	Trembling Aspen	<i>Populus tremuloides</i>	32, 28	-	-	-	100	-	Dead	Remove
462	Green Ash	<i>Fraxinus pennsylvanica</i>	12	-	-	-	100	-	Dead	Remove
463	Weeping Willow	<i>Salix babylonica</i>	~65	P	G	F/G		6	Co-dominance at 5m, asymmetrical crown (L), cavity near base	Remove
464	Honey Locust (shademaster)	<i>Gleditsia triacanthos 'inermis' cv.</i>	24, 23	F	F/G	F/G		4.5	Co-dominance at 0.5m with included bark (H), lean (M), sweep (L), crook (L), asymmetrical crown (M)	Remove
P465	Eastern White Cedar	<i>Thuja occidentalis</i>	10-25 (avg. 18)	F/G	G	G		1.5	17 trees in row, union at base	Remove
NT466	Manitoba maple	<i>Acer negundo</i>	18	P	P	P	40	2	Union at base, smaller stem dead, grape vine competition (H)	Remove
467	White Birch	<i>Betula papyrifera</i>	27, 23	F	F	F		3.5	Union at base, sweep (L), broken branches (L)	Remove
468	missing									Remove
469	White Birch	<i>Betula papyrifera</i>	21, 14, 12	F	F/G	G		10	Union at base, bow (L-M)	Remove
470	White Birch	<i>Betula papyrifera</i>	26, 20, 16	P/F	F	P/F	40	3.5	Union at base, 26cm stem lost leader at 2m, bow (H), other 2 stems failed, also tagged 726	Remove
471	White Birch	<i>Betula papyrifera</i>	19, 18	-	-	-	100	-	Dead	Remove
472	White Birch	<i>Betula papyrifera</i>	23.5	P	F	P/F	20	2	Bow (L), asymmetrical crown (L), epicormic branches (M), vertical crack (M), dead leader	Remove
473	Manitoba maple	<i>Acer negundo</i>	36	P	P	P	60	2	Co-dominance at 0.6m with 3 stems, 2 stems failed, dead leader, stem wound (M) at union, cavity, hollow stem, dead branches (M) ==> hazard	Remove
474	Manitoba maple	<i>Acer negundo</i>	40-60 (avg. 52)	P	P	P	90	4	Co-dominance at 0.3m with 5 stems but all dead except epicormic branches (M) at base, epicormic branches (H)	Remove
475	Apple Species	<i>Malus spp.</i>	17, 16, 16	P	P	P	50	4	Union at base (4 stems), bow (L), lean (M), epicormic branches (H)	Remove

476	Norway Spruce	<i>Picea abies</i>	~45	-	-	-	100	-	Dead	Remove
477	Weeping Willow	<i>Salix babylonica</i>	~50	F	F	F	20	6	Broken branches (M), cavity	Remove
NT478	White Spruce	<i>Picea glauca</i>	22	G	G	P	60	2	Dead leader	Remove
479	Weeping Willow	<i>Salix babylonica</i>	46	P	F	F	15	4	Crook (L), broken branches (L), bow (L), epicormic branches (M), cavity near base	Remove
480	Austrian Pine	<i>Pinus nigra</i>	31	F/G	G	F	20	2	Bow 9L)	Remove
481	Austrian Pine	<i>Pinus nigra</i>	31	F/G	G	P/F		2	Co-dominance at 3m, sparse crown (M)	Remove
482	Austrian Pine	<i>Pinus nigra</i>	31	G	G	F	20	2	Sparse crown (M)	Remove
483	Austrian Pine	<i>Pinus nigra</i>	29	F/G	G	F	20	2	Union at 2 and 3m	Remove
484	Austrian Pine	<i>Pinus nigra</i>	36.5	G	G	F		3		Remove
485	White Birch	<i>Betula papyrifera</i>	23.5, 14	F/G	F	F	15	2	Union at base, also tagged 724	Remove
486	White Birch	<i>Betula papyrifera</i>	21.5, 14.5, 12.5, 11, 10	F	F	F	20	3.5	Union at base, lean (L), bow (M), also tagged 725	Remove
487	White Birch	<i>Betula papyrifera</i>	18	F/G	G	F	20	2	Crook (M), asymmetrical crown (L)	Remove
488	Red Oak	<i>Quercus rubra</i>	22	G	G	F	15	3		Remove
489	Little-leaf Linden	<i>Tilia cordata</i>	36, 24	F/G	G	F	20	4	Union at 1m with included bark (M)	Remove
490	Red Maple	<i>Acer rubrum</i>	18.5	G	G	F	15	2.5		Remove
497	Sugar Maple	<i>Acer saccharum</i>	10.5	G	G	G		2.5		Remove
498	American Beech	<i>Fagus grandifolia</i>	11.5	G	G	G		2.5		Remove
499	Sugar Maple	<i>Acer saccharum</i>	11	G	F/G	F/G		2	Asymmetrical crown (M), epicormic branches (M)	Remove
500	Sugar Maple	<i>Acer saccharum</i>	10.5	G	G	G		1.5		Remove
584	White Pine	<i>Pinus strobus</i>	15	G	G	G		1.5		Remove
585	White Pine	<i>Pinus strobus</i>	15	G	G	G		2		Remove
586	White Pine	<i>Pinus strobus</i>	14	F/G	G	F/G		1.5	Stem wounds (M)	Remove
587	Trembling Aspen	<i>Populus tremuloides</i>	11	F/G	G	G		1	Crook (M)	Remove
588	Trembling Aspen	<i>Populus tremuloides</i>	10	F/G	G	F/G		1	Crook (L), sweep (L)	Remove
589	White Pine	<i>Pinus strobus</i>	10.5	G	G	F		1		Remove
590	White Pine	<i>Pinus strobus</i>	10.5	G	G	G		1		Remove
591	White Pine	<i>Pinus strobus</i>	12	G	G	G		1		Remove
592	Trembling Aspen	<i>Populus tremuloides</i>	10.5	F	G	F		1	Bow (L), crook (M)	Remove
593	Trembling Aspen	<i>Populus tremuloides</i>	10.5	G	G	F/G		1		Remove
594	Trembling Aspen	<i>Populus tremuloides</i>	11	F	G	F		1	Seam (L), crack	Remove

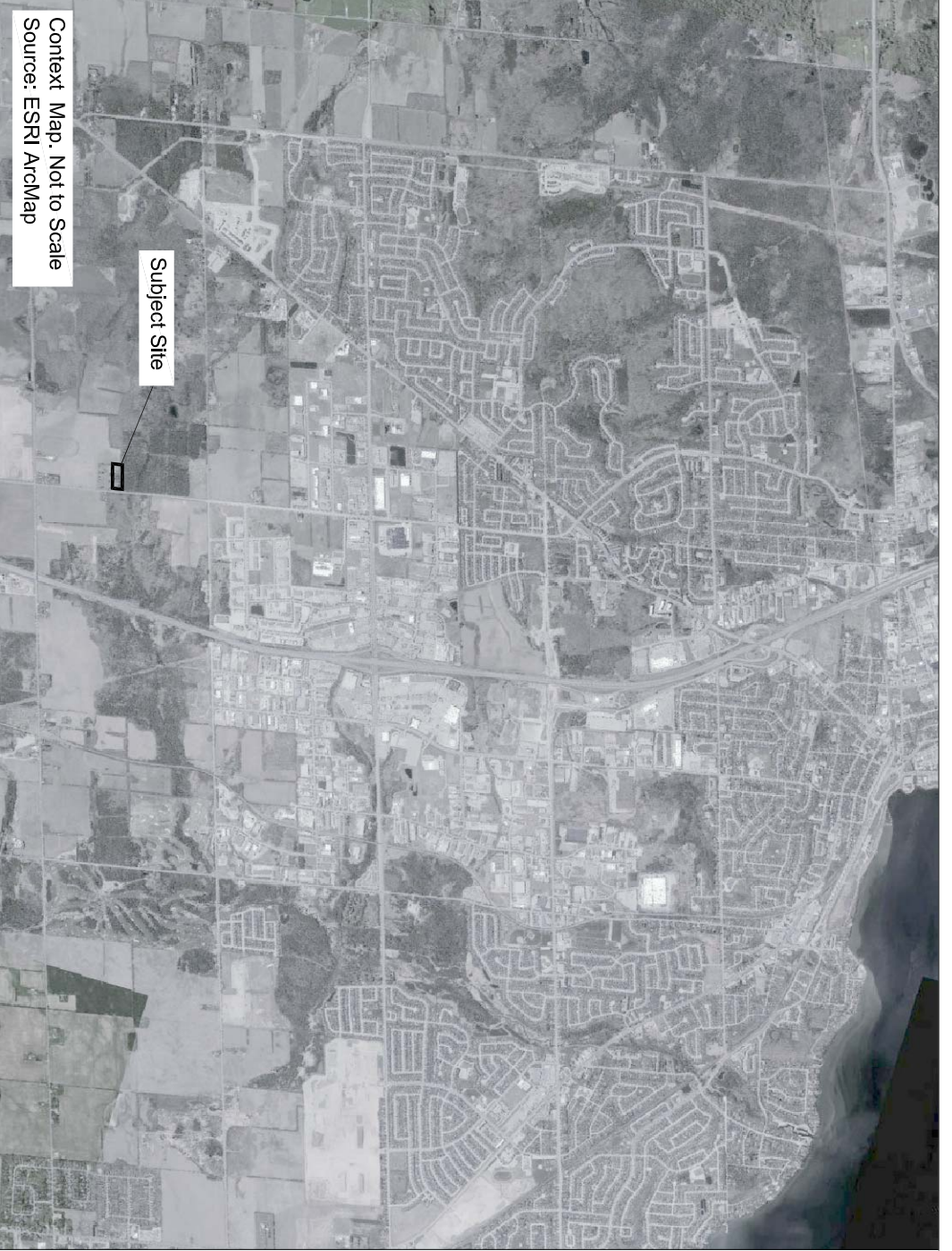
595	Trembling Aspen	<i>Populus tremuloides</i>	10.5	G	G	G		1		Remove
596	Trembling Aspen	<i>Populus tremuloides</i>	11.5	G	G	G		1		Remove
597	Trembling Aspen	<i>Populus tremuloides</i>	10.5	F/G	G	F/G		1	Lean (L), failed tree leaning on it	Remove
598	White Birch	<i>Betula papyrifera</i>	6-13 (avg. 10)	F/G	G	F/G		3.5	Union at base with 25 stems	Remove
599	Sweet Cherry	<i>Prunus avium</i>	11.5, 10.5	F/G	G	F/G		2	Co-dominance at 0.5m with included bark (M)	Remove
600	Sugar Maple	<i>Acer saccharum</i>	12	G	G	G		2		Remove
601	Sugar Maple	<i>Acer saccharum</i>	10	G	G	G		2		Remove
602	White Pine	<i>Pinus strobus</i>	11.5	G	G	G		1.5		Remove
603	Red Oak	<i>Quercus rubra</i>	10	G	G	G		1.5		Remove
604	Sugar Maple	<i>Acer saccharum</i>	11	G	G	G		2.5		Remove
605	Sugar Maple	<i>Acer saccharum</i>	10	G	G	G		2		Remove
606	Sugar Maple	<i>Acer saccharum</i>	10	G	G	G		2		Remove
607	Sugar Maple	<i>Acer saccharum</i>	11.5	G	G	G		2.5		Remove
608	Red Oak	<i>Quercus rubra</i>	14.5	G	G	G		2		Remove
609	White Pine	<i>Pinus strobus</i>	28	G	G	G		3.5		Remove
610	White Pine	<i>Pinus strobus</i>	12.5	G	G	G		2		Remove
611	Sugar Maple	<i>Acer saccharum</i>	11	G	G	G		2.5		Remove
612	Ironwood	<i>Ostrya virginiana</i>	11	G	G	G		2.5		Remove
613	Sugar Maple	<i>Acer saccharum</i>	11	G	G	G		2.5		Remove
614	Sugar Maple	<i>Acer saccharum</i>	10.5	G	G	G		2		Remove
615	Austrian Pine	<i>Pinus nigra</i>	10.5	G	G	G		1		Remove
616	Sweet Cherry	<i>Prunus avium</i>	10.5	G	G	F/G		2		Remove
617	Ironwood	<i>Ostrya virginiana</i>	10	G	G	G		1.5		Remove
618	Sugar Maple	<i>Acer saccharum</i>	11.5	G	G	G		2		Remove
619	White Pine	<i>Pinus strobus</i>	10	G	G	F		1		Remove
620	Sugar Maple	<i>Acer saccharum</i>	13	G	G	G		2.5		Remove
621	Sugar Maple	<i>Acer saccharum</i>	10.5	G	G	G		1.5		Remove
622	Sugar Maple	<i>Acer saccharum</i>	10.5	G	G	G		1.5		Remove
623	White Pine	<i>Pinus strobus</i>	13.5	G	G	G		2		Remove
624	Trembling Aspen	<i>Populus tremuloides</i>	14	F/G	G	F	20	1	Bow (L) to south, sparse crown (M)	Remove
625	Sugar Maple	<i>Acer saccharum</i>	10	G	G	F/G		1.5	Epicormic branches (M)	Remove
626	Sugar Maple	<i>Acer saccharum</i>	13	G	G	G		2.5		Remove
627	Sugar Maple	<i>Acer saccharum</i>	10.5	G	G	G		1.5		Remove

628	Trembling Aspen	<i>Populus tremuloides</i>	11.5	P/F	G	P/F	25	1.5	Fruiting bodies (L), crook (L)	Remove
629	Red Oak	<i>Quercus rubra</i>	10	G	G	G		1.5		Remove
630	Red Oak	<i>Quercus rubra</i>	10	G	G	G		2		Remove
631	Trembling Aspen	<i>Populus tremuloides</i>	13.5	G	G	P/F	20	1		Remove
632	Ironwood	<i>Ostrya virginiana</i>	11	G	F/G	G		2	Asymmetrical crown (M)	Remove
633	White Pine	<i>Pinus strobus</i>	14	G	G	G		1.5		Remove
634	Basswood	<i>Tilia americana</i>	13.5	G	G	F	20	5	Skeletonized leaves	Remove
635	Red Oak	<i>Quercus rubra</i>	10	F/G	G	G		1.5	Lean (L)	Remove
636	White Spruce	<i>Picea glauca</i>	12	G	G	G		1.5		Remove
637	Scots Pine	<i>Pinus sylvestris</i>	10	G	G	G		1.5		Remove
638	Eastern Cottonwood	<i>Populus deltoides</i>	10	G	G	F		1		Remove
639	White Pine	<i>Pinus strobus</i>	15	G	G	G		1.5		Remove
641	White Pine	<i>Pinus strobus</i>	11.5	G	G	G		1.5		Remove
642	Sugar Maple	<i>Acer saccharum</i>	10.5	G	G	G		2		Remove
643	Sugar Maple	<i>Acer saccharum</i>	10.5	G	G	G		2		Remove
644	Red Oak	<i>Quercus rubra</i>	11	G	G	G		1.5		Remove
645	White Pine	<i>Pinus strobus</i>	12.5	G	G	G		1.5		Remove
646	Red Oak	<i>Quercus rubra</i>	11	G	G	G		1.5		Remove
678	Apple Species	<i>Malus spp.</i>	14	-	-	-	100	-	Dead	Remove
679	Sugar Maple	<i>Acer saccharum</i>	23, 22, 19	F/G	G	G		6	Union at base	Remove
688	Ironwood	<i>Ostrya virginiana</i>	11.5	G	G	G		2		Remove
689	Ironwood	<i>Ostrya virginiana</i>	11	G	G	G		1.5		Remove
690	White Pine	<i>Pinus strobus</i>	11.5	G	G	G		1.5		Remove
699	White Spruce	<i>Picea glauca</i>	~15	G	G	G		1.5		Remove
700	White Spruce	<i>Picea glauca</i>	~13	G	G	G		1.5		Remove
701	White Spruce	<i>Picea glauca</i>	~20, 18	F/G	G	G		2	Co-dominance at 0.2m	Remove
702	Manitoba maple	<i>Acer negundo</i>	10,7	F	F/G	F		1.5	Union at base, sweep (L), crook (L)	Remove
703	White Spruce	<i>Picea glauca</i>	14	G	G	G		1.5		Remove
704	White Spruce	<i>Picea glauca</i>	14.5	G	G	F/G		1.5		Remove
711	Basswood	<i>Tilia americana</i>	12.5, 10	F/G	G	G		2	Union at base	Preserve
713	Trembling Aspen	<i>Populus tremuloides</i>	12	F/G	G	F/G		1	Bow (L) to south	Remove
714	White Pine	<i>Pinus strobus</i>	16	G	G	G		2		Remove
716	Sugar Maple	<i>Acer saccharum</i>	12.5	G	G	G		1.5	Lean (L) to south	Remove
718	Sugar Maple	<i>Acer saccharum</i>	11	G	G	G		1.5		Remove

719	Red Oak	<i>Quercus rubra</i>	12, 7	F/G	F/G	F/G		2	Union at 0.6m with included bark (L), asymmetrical crown (M)	Preserve
720	Basswood	<i>Tilia americana</i>	10.5, 10.5, 6	F/G	F/G	F/G		2	Union at base, asymmetrical crown (M)	Remove
721	White Spruce	<i>Picea glauca</i>	11.5	G	G	F		1.5		Remove
722	Red Oak	<i>Quercus rubra</i>	11.5	G	F/G	F/G		2	Asymmetrical crown (M)	Remove
A	White Elm	<i>Ulmus americana</i>	~38, 28	F/G	G	F/G		5.5	Union at 0.8m	Preserve
B	Red Oak	<i>Quercus rubra</i>	35	P/F	F/G	F/G		4.5	Bow (L), included metal bar (H)	Preserve
C	Sugar Maple	<i>Acer saccharum</i>	21.5	G	G	G			Sweep (L)	Remove
D	Ironwood	<i>Ostrya virginiana</i>	17	F	G	G		2.5	Crook (M), sweep (L), asymmetrical crown (M)	Remove
E	Red Oak	<i>Quercus rubra</i>	24	F/G	G	G		4	Lean (L)	Remove
F	Sugar Maple	<i>Acer saccharum</i>	57	G	G	G		7		Remove
G	Basswood	<i>Tilia americana</i>	16, 15	P	P	P		2	Union at 0.2m but 1 stem dead, skeletonied leaves, crook (L)	Remove
H	White Birch	<i>Betula papyrifera</i>	18.5	F	G	G		3	Lean (M) to north, crook (M)	Remove
I	Sugar Maple	<i>Acer saccharum</i>	48, 29	F	G	G		7	Co-dominance at 0.5m with included bark (M), sweep (L)	Remove
J	Sugar Maple	<i>Acer saccharum</i>	~44, 40	F/G	G	G		7	Union at base	Remove
K	American Beech	<i>Fagus grandifolia</i>	12.5	P	P	P	75	1.5	Lost leader at 3m	Remove
L	American Beech	<i>Fagus grandifolia</i>	23, 22.5	P/F	F	F		3	Co-dominance at 0.5m with included bark (L), 1 stem lost leader at 4m, sparse crown (L)	Remove
M	American Beech	<i>Fagus grandifolia</i>	25.5	-	-	-	100	-	Dead	Remove
N	Black Cherry	<i>Prunus serotina</i>	23.5	F/G	G	G		4	Crook (L), lean (L)	Remove
O	White Birch	<i>Betula papyrifera</i>	33, 21.5	F/G	G	F		5	Union at base, lean (L), dead branches (L)	Remove
P	Sugar Maple	<i>Acer saccharum</i>	46.5	G	G	G		7		Remove
Q	Black Cherry	<i>Prunus serotina</i>	20	F	F/G	F/G		2.5	Lean (L) to north, asymmetrical crown (M), crook (M)	Remove
R	Red Oak	<i>Quercus rubra</i>	26	F/G	G	G		3	Co-dominance in crown	Remove
S	Ironwood	<i>Ostrya virginiana</i>	20	F/G	F/G	P/F	30	3.5	Lean (L), crook (L), asymmetrical crown (M)	Remove
T	Red Oak	<i>Quercus rubra</i>	38	G	G	G		5		Remove
U	Black Cherry	<i>Prunus serotina</i>	14.5	F	G	F/G		3	Lean (M) to north, crook (M)	Remove
V	Ironwood	<i>Ostrya virginiana</i>	12.5,9	F/G	G	F/G		2	Union at 0.3m, epicormic branches (M)	Remove

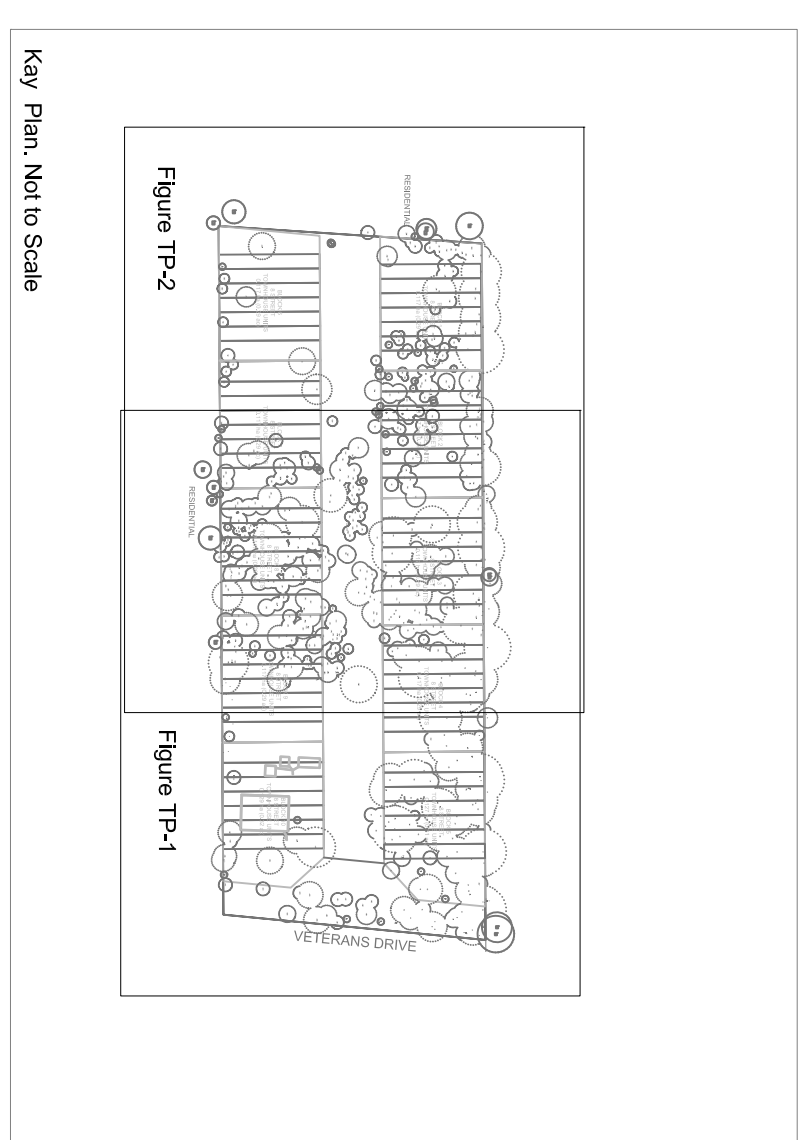
W	Ironwood	<i>Ostrya virginiana</i>	15.5,9	F/G	G	G		3.5	Union at 0.3m, epicormic branches (M)	Remove
X	Ironwood	<i>Ostrya virginiana</i>	14.5	G	G	G		2.5	Crook (L)	Preserve
Y	Ironwood	<i>Ostrya virginiana</i>	13.5	G	G	G		2		Preserve
Z	Basswood	<i>Tilia americana</i>	30,25, 23, 22	F	F/G	F/G		5	Union at base (4 stems), lean (M)	Remove
AA	Green Ash	<i>Fraxinus pennsylvanica</i>	23	-	-	-	100	-	Dead	Remove
AB	Ironwood	<i>Ostrya virginiana</i>	18, 12, 11, 11	F	F/G	G		3	Crook (H), lean (L), union at 1m	Remove
AC	Ironwood	<i>Ostrya virginiana</i>	16.5	F/G	G	G		3.5	Lean (VL), crook (L)	Remove
AD	Bitternut Hickory	<i>Carya cordiformis</i>	29.5	-	-	-	100	-	Failed to ground	Remove
AE	Red Oak	<i>Quercus rubra</i>	15	G	G	G		2.5		Remove
AF	Black Cherry	<i>Prunus serotina</i>	21.5	-	-	-	100	-	Dead	Remove
AG	Green Ash	<i>Fraxinus pennsylvanica</i>	18	-	-	-	100	-	Dead	Remove
AH	Green Ash	<i>Fraxinus pennsylvanica</i>	24.5	-	-	-	100	-	Dead	Remove
AI	Sugar Maple	<i>Acer saccharum</i>	16.5	G	G	G		2		Remove
AJ	Ironwood	<i>Ostrya virginiana</i>	11.5	F/G	F/G	F/G		2	Crook (L), union at 2m, asymmetrical crown (M)	Remove
AK	Ironwood	<i>Ostrya virginiana</i>	12.5	G	G	G		3		Remove
AL	Ironwood	<i>Ostrya virginiana</i>	12.5	-	-	-	100	-	Dead	Remove
AM	Basswood	<i>Tilia americana</i>	25-35 (avg. 30)	P	P	P	75	3	Union at base with 4 stems; 1 stem failed, 1 stem dead	Remove
AN	Sugar Maple	<i>Acer saccharum</i>	35	F/G	G	F/G		4	Bow (L)	Remove
AO	Sugar Maple	<i>Acer saccharum</i>	35, 27, 17	F/G	G	G		6	Union at base	Remove
AP	Red Oak	<i>Quercus rubra</i>	32	F/G	G	G		4	Lean (L) to south	Preserve

Codes		
DBH	Diameter at Breast Height	(cm)
TI	Trunk Integrity	(G, F, P)
CS	Crown Structure	(G, F, P)
CV	Crown Vigor	(G, F, P)
CDB	Crown dieback	%
DL	Dripline in radius	(m)
~ = Estimate, (VL) = very light, (L) = light, (M) = moderate, (H) = heavy		



Context Map, Not to Scale  
Source: ESRI ArcMap

Owner Signature



Key Plan, Not to Scale



**TREE PROTECTION PLAN NOTES**

It is the intent of this report to identify and protect trees that are located on or adjacent to the subject property. The protection of trees is a key component of any development project and is an important part of the overall design and construction process. The protection of trees is a key component of any development project and is an important part of the overall design and construction process.

The protection of trees is a key component of any development project and is an important part of the overall design and construction process. The protection of trees is a key component of any development project and is an important part of the overall design and construction process.

**LEGEND**

**Tree Inventory**

Refer to Table 1 of the report dated 16 September 2022 for detailed tree inventory. Trees greater than 10cm on or within six metres of the subject property and trees of all sizes within the City right-of-way and on neighbouring private properties were included in the inventory.

**Tree Removals**

The removal of 604 trees is required to accommodate the proposed development.

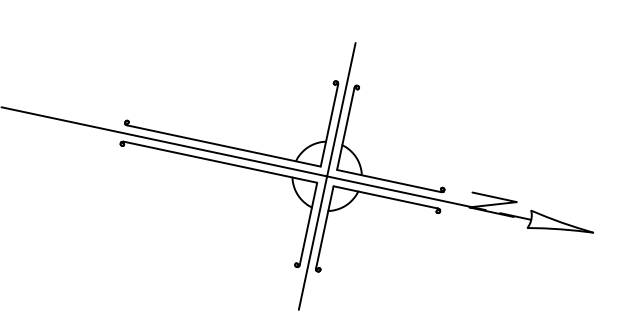
**Tree Preservation**

Preservation of the remaining 14 trees will be possible with appropriate tree protection measures. Tree protection measures must be implemented prior to construction.

- Required Tree Protection Fencing  
Location per BSCP-1232
- Delineate of trees to be removed  
(centre of drip-line is tree location)
- Delineate of trees to be retained  
(centre of drip-line is tree location)
- Trees that are dead or fall to the ground
- X Tree Label  
removal recommended
- X Tree Label  
preservation recommended

Property Line

PART OF LOT 5  
CONCESSION 10  
GEOGRAPHIC TOWNSHIP OF INNISFIL  
CITY OF BARRIE  
COUNTY OF SIMCOE



No.	Issue/Revisions	Date	By
1	Report Submission	16 Sep. 22	KH

Base Data: Innovative Planning Solutions (Site plan)

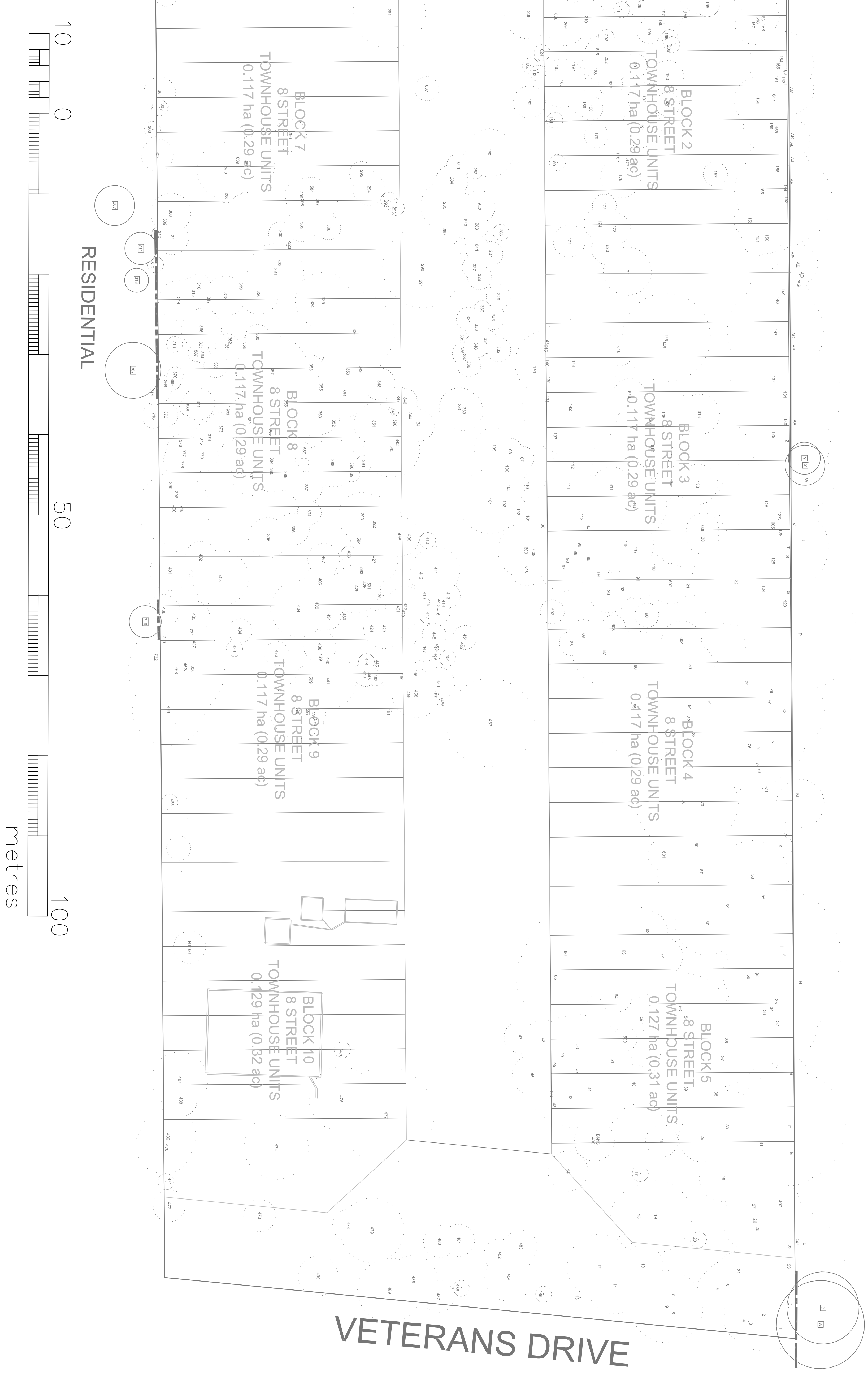
**KUNTZ FORESTRY CONSULTING Inc.**  
PO Box 1267 Lakeshore W/PO  
146 Lakeshore Road West  
Oshawa, Ontario L1G 4L1  
www.kuntzforestry.ca  
consult@kuntzforestry.ca

Client:  
**IPS Consulting**  
647 Wellham Road, Unit 9  
Barrie, Ontario L4N 0B7

Property:  
**844 Veterans Drive**  
Barrie, ON

**Tree Inventory, Preservation Plan**  
Edge Management Plan

Project **P1577** Figure  
Date **16 September 2022** **TP-1**  
Scale **1:250**

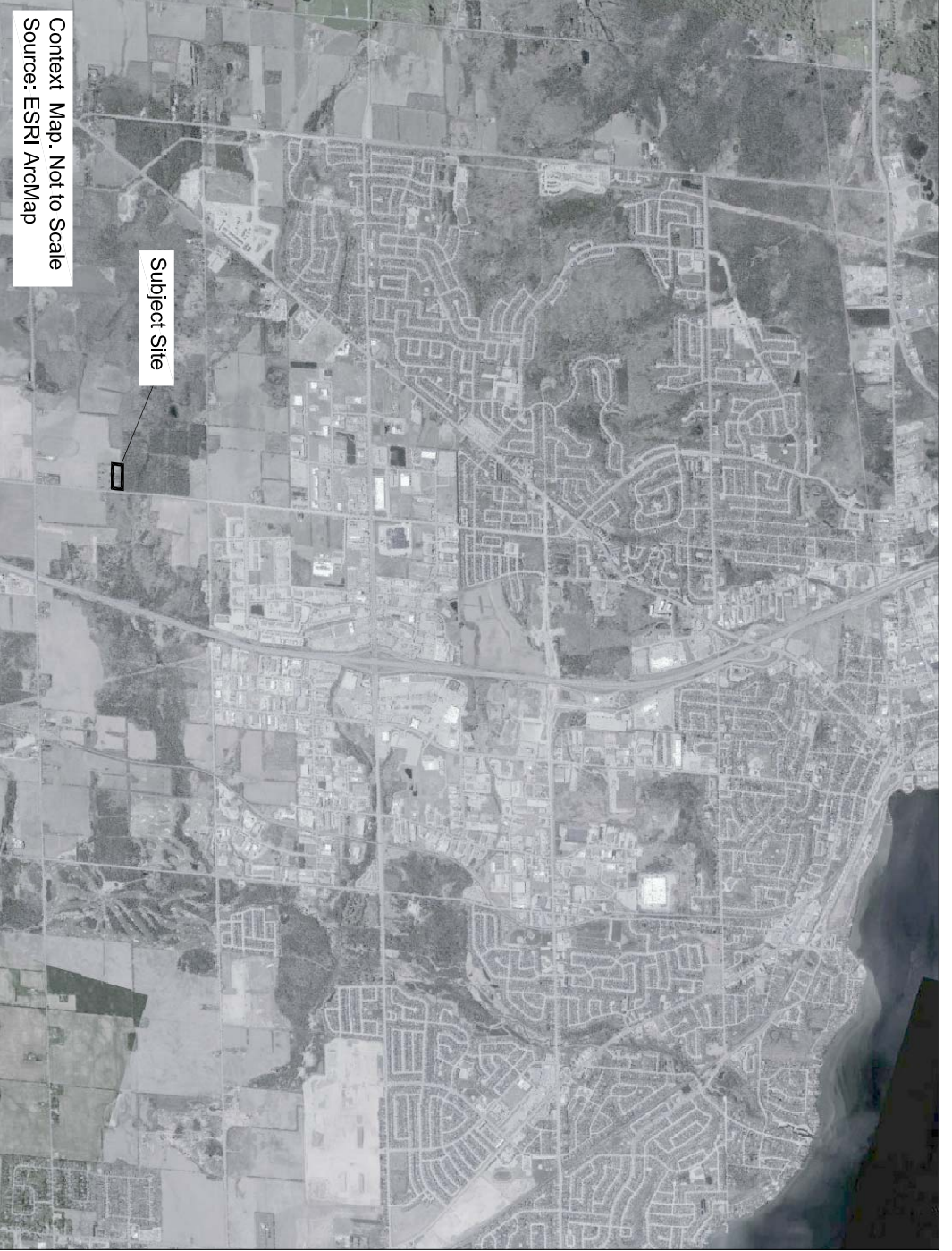


10 0

50

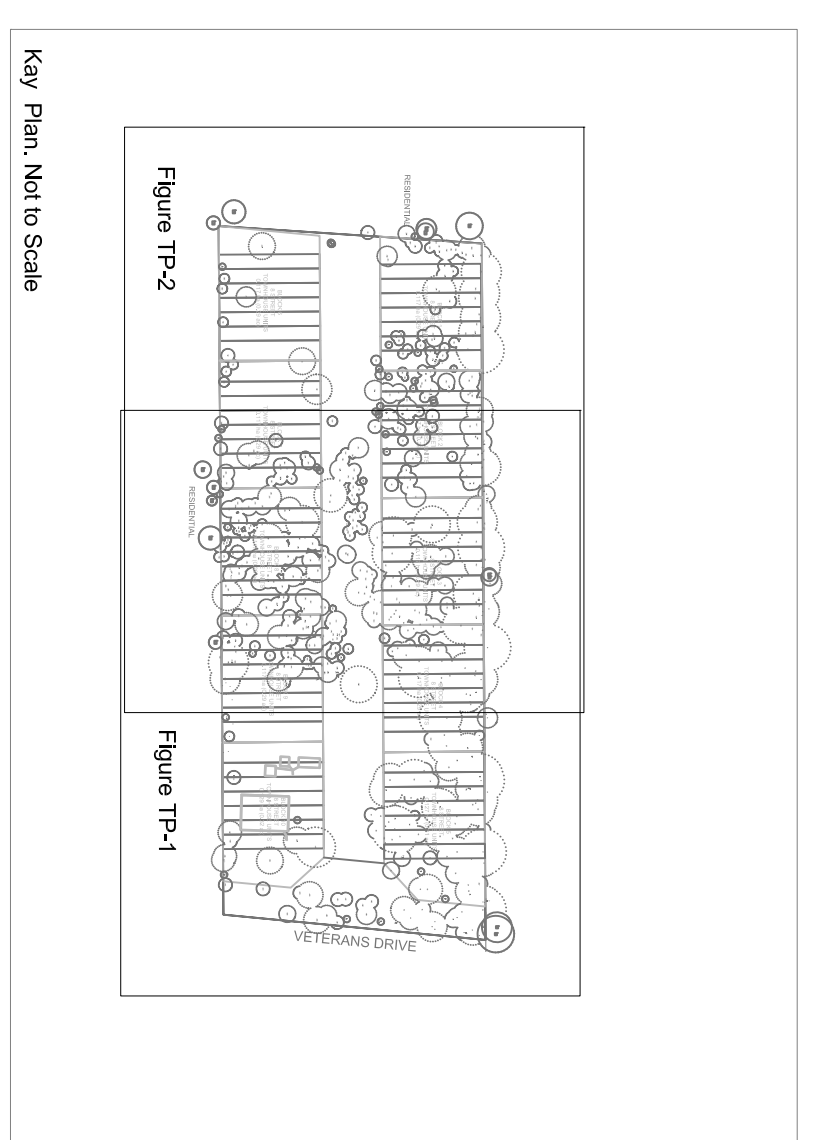
100

metres

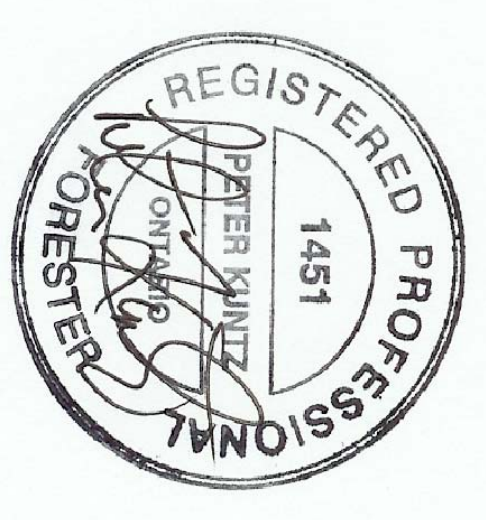


Context Map, Not to Scale  
Source: ESRI ArcMap

Owner Signature



Key Plan, Not to Scale



**TREE PROTECTION PLAN NOTES**

1. This is a site plan intended to illustrate proposed tree preservation measures and is not a site plan. It is not a site plan and does not constitute a site plan. It is not a site plan and does not constitute a site plan. It is not a site plan and does not constitute a site plan.

2. The protection of trees and the location of trees to be preserved and the location of trees to be removed are shown on this plan. The location of trees to be preserved and the location of trees to be removed are shown on this plan.

3. The location of trees to be preserved and the location of trees to be removed are shown on this plan. The location of trees to be preserved and the location of trees to be removed are shown on this plan.

4. The location of trees to be preserved and the location of trees to be removed are shown on this plan. The location of trees to be preserved and the location of trees to be removed are shown on this plan.

5. The location of trees to be preserved and the location of trees to be removed are shown on this plan. The location of trees to be preserved and the location of trees to be removed are shown on this plan.

6. The location of trees to be preserved and the location of trees to be removed are shown on this plan. The location of trees to be preserved and the location of trees to be removed are shown on this plan.

7. The location of trees to be preserved and the location of trees to be removed are shown on this plan. The location of trees to be preserved and the location of trees to be removed are shown on this plan.

8. The location of trees to be preserved and the location of trees to be removed are shown on this plan. The location of trees to be preserved and the location of trees to be removed are shown on this plan.

9. The location of trees to be preserved and the location of trees to be removed are shown on this plan. The location of trees to be preserved and the location of trees to be removed are shown on this plan.

10. The location of trees to be preserved and the location of trees to be removed are shown on this plan. The location of trees to be preserved and the location of trees to be removed are shown on this plan.

**LEGEND**

**Tree Inventory**

Refer to Table 1 of the report dated 16 September 2022 for detailed tree inventory. Trees greater than 10cm on or within six metres of the subject property and trees of all sizes within the City Right-of-Way and on neighbouring private properties were included in the inventory.

**Tree Removals**

The removal of 604 trees is required to accommodate the proposed development.

**Tree Preservation**

Preservation of the remaining 14 trees will be possible with appropriate tree protection measures. Tree protection measures must be implemented prior to construction.

Required Tree Protection Fencing  
Location per BSCP-1232

Delineate of trees to be removed

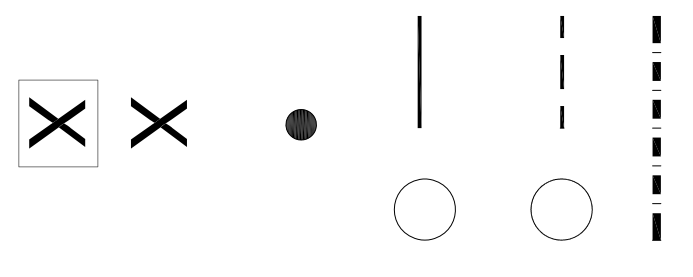
Delineate of trees to be retained

Trees that are dead or fall to the ground

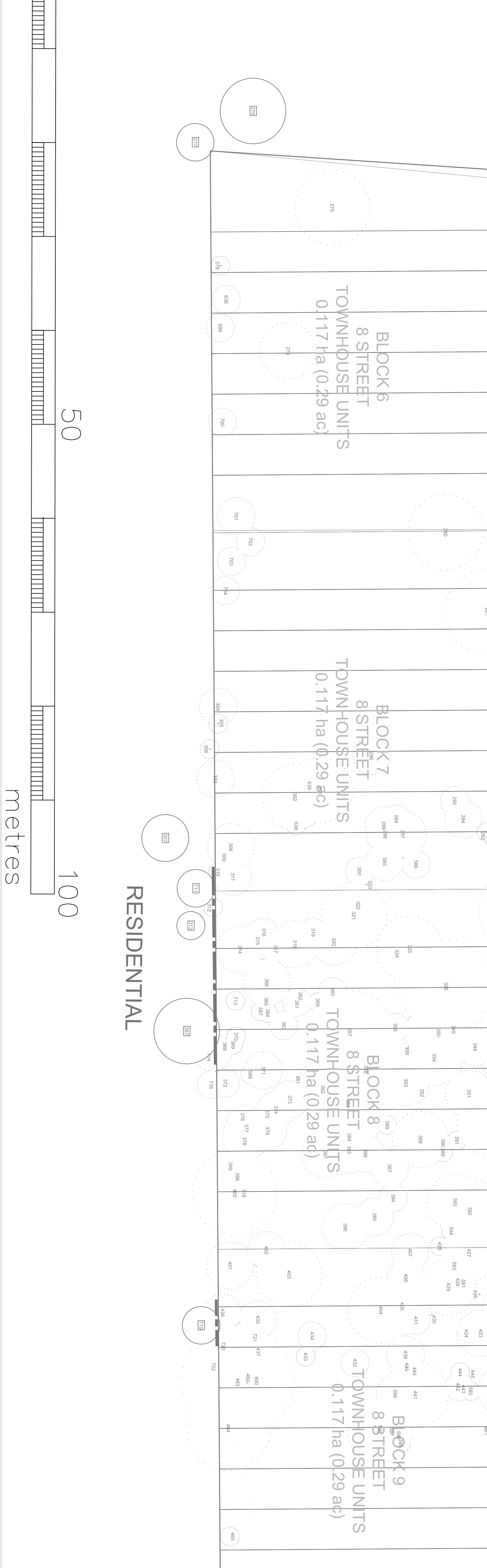
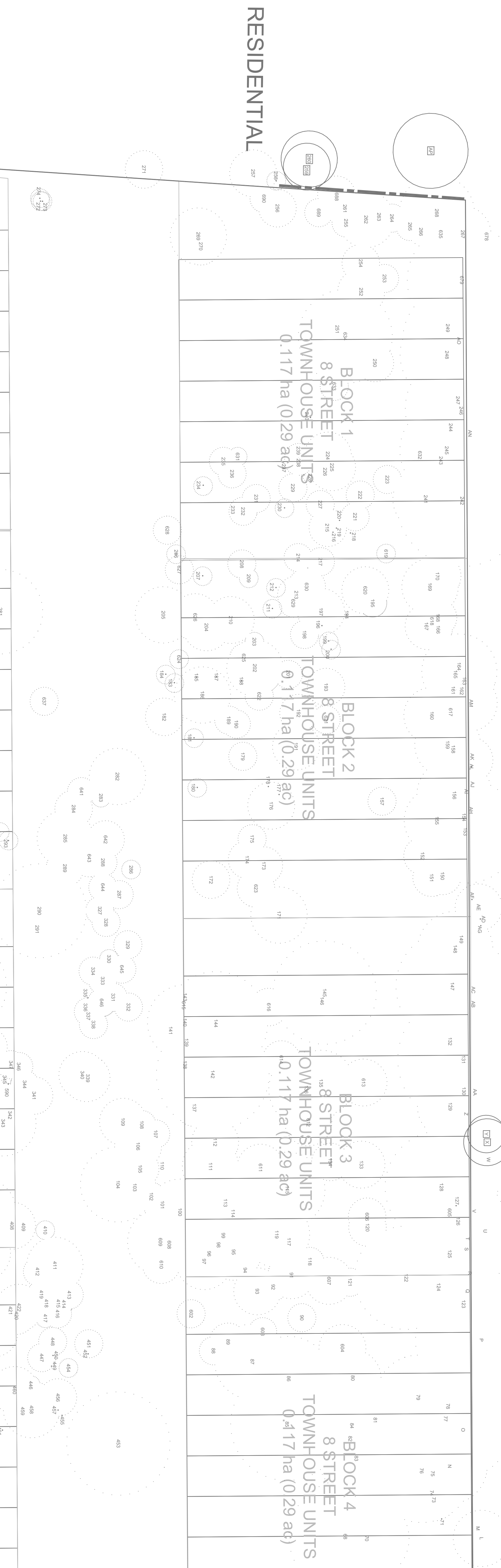
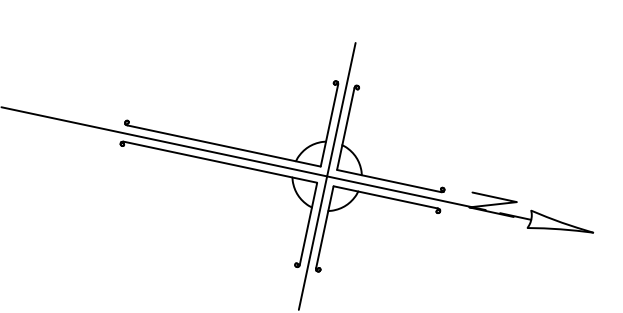
Tree Label  
removal recommended

Tree Label  
preservation recommended

Property Line



PART OF LOT 5  
CONCESSION 10  
GEOGRAPHIC TOWNSHIP OF INNISFIL  
CITY OF BARRIE  
COUNTY OF SIMCOE



Base Data: Innovative Planning Solutions (Site plan)		
No.	Issue/Revisions	Date
1	Report Submission	16 Sep. 22
		KH
Client: IPS Consulting 647 Wellham Road, Unit 9 Barrie, Ontario L4N 0B7		
Property: 844 Veterans Drive Barrie, ON		
Tree Inventory & Preservation Plan		
Project	P1577	Figure
Date	16 September 2022	TP-2
Scale	1:250	

**KUNTZ FORESTRY CONSULTING Inc.**  
PO Box 1267 Lakeshore W/PO  
146 Lakeshore Road West  
Orillia, Ontario L3V 8T7  
www.kuntzforestry.ca  
consult@kuntzforestry.ca



# LEGEND

## Tree Inventory

Refer to Table 1 of the report dated 16 September 2022 for detailed tree inventory. Trees greater than 10cm on or within six metres of the subject property and trees of all sizes within the City right-of-way and on neighbouring private properties were included in the inventory.

## Tree Removals

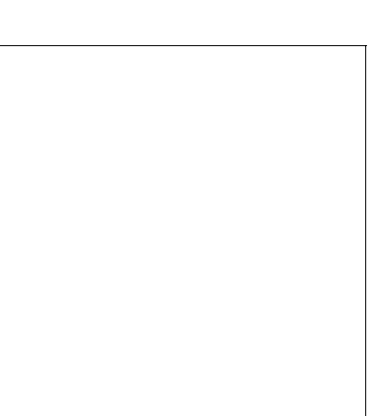
The removal of 604 trees is required to accommodate the proposed development.

## Tree Preservation

Preservation of the remaining 14 trees will be possible with appropriate tree protection measures. Tree protection measures must be implemented prior to construction.



Owner Signature



PART OF LOT 5  
CONCESSION 10  
GEOGRAPHIC TOWNSHIP OF INNISFIL  
CITY OF BARRIE  
COUNTY OF SIMCOE

No.	Issue/Revisions	Date	By
1	Report Submission	16 Sep. 22	KH

Base Date: Innovative Planning Solutions (Site plan)



P.O. Box 1267, Lakeshore W.P.O.  
146 Lakeshore Road West  
Oshawa, Ontario L1G 4R7  
www.kuntzforestry.ca  
consult@kuntzforestry.ca

Client:  
**IPS Consulting**  
647 Wellham Road, Unit 9  
Barrie, Ontario L4N 0B7

Property:  
**844 Veterans Drive**  
Barrie, ON

## Tree Inventory & Preservation Plan

Project **P1577** Figure

Date **16 September 2022**

Scale **1:250** **TP-4**

379	White Pine	Pinus strobus	20	G	G	G	2		Remove	
380	Trembling Aspen	Populus tremuloides	22.5	G	G	G	2	Dead	Remove	
381	Trembling Aspen	Populus tremuloides	11	PF	F	F	3	Lean (M), bow (M)	Remove	
382	White Birch	Betula papyrifera	37.5	G	G	FG	4.5		Remove	
383	Basswood	Tilia americana	16.5	G	G	G	2	Cook (L), skeletonized leaves	Remove	
384	White Pine	Pinus strobus	27	FG	G	G	2.5	Sweep (L)	Remove	
385	White Pine	Pinus strobus	23	G	G	G	2		Remove	
386	White Pine	Pinus strobus	27	G	G	G	2		Remove	
387	White Pine	Pinus strobus	27	G	G	G	2		Remove	
388	Red Oak	Quercus rubra	15.5	G	G	G	3		Remove	
389	Trembling Aspen	Populus tremuloides	14	G	G	G	1		Remove	
390	Trembling Aspen	Populus tremuloides	13	FG	G	G	1	Lean (L), cook (L)	Remove	
391	Trembling Aspen	Populus tremuloides	11.5	G	G	G	1	Cook (L)	Remove	
392	White Pine	Pinus strobus	35	G	G	G	3.5		Remove	
393	White Pine	Pinus strobus	27	G	G	G	3		Remove	
394	White Pine	Pinus strobus	27	G	G	G	3		Remove	
395	White Pine	Pinus strobus	27	FG	G	G	2	Co-dominance at 0.3m	Remove	
396	White Pine	Pinus strobus	25	FG	G	G	2.5	Asymmetrical crown (M), Virginia creeper	Remove	
397	White Pine	Pinus strobus	37	G	G	G	4.5		Remove	
398	White Pine	Pinus strobus	15	G	G	G	1.5		Remove	
399	White Pine	Pinus strobus	25.23.21	F	G	G	4.5 (M)	Union at base (5 stems), cook (L), lean (L)	Remove	
400	Basswood	Tilia americana	20, 20	F	G	G			Remove	
401	White Birch	Betula papyrifera	23, 17	FG	G	F	2.5	Asymmetrical crown (L), skeletonized	Remove	
402	White Pine	Pinus strobus	23	FG	G	G	2	Co-dominance in crown, cook (L)	Remove	
403	White Pine	Pinus strobus	35	FG	G	G	3.5	Co-dominance at 3m	Remove	
404	White Pine	Pinus strobus	38	G	G	F	3.5		Remove	
405	White Pine	Pinus strobus	24	G	G	G	3	Union at 1m with included bark (L), Co-	Remove	
406	White Pine	Pinus strobus	21	FG	G	G	2	dominance at 3m	Remove	
407	White Pine	Pinus strobus	33	G	G	F	2.5	Asymmetrical crown (L)	Remove	
408	White Pine	Pinus strobus	23	G	G	G	2.5		Remove	
409	Trembling Aspen	Populus tremuloides	12.5	FG	G	G	1		Remove	
410	Trembling Aspen	Populus tremuloides	12.5	FG	G	G	1	Cook (L), co-dominance in crown	Remove	
411	Trembling Aspen	Populus tremuloides	14.5	G	G	G	1.5		Remove	
412	Trembling Aspen	Populus tremuloides	17.5	FG	FG	FG	1.5	Asymmetrical crown (L), cook (L)	Remove	
413	Trembling Aspen	Populus tremuloides	14.5	G	F	F	2.0	1	Shm wound (L), crown (L)	Remove
414	Trembling Aspen	Populus tremuloides	14	F	G	F	1.5		Remove	
415	White Pine	Pinus strobus	15	G	G	G	1.5	Asymmetrical crown (L)	Remove	
416	White Pine	Pinus strobus	19	G	G	G	1.5	Asymmetrical crown (L)	Remove	
417	Trembling Aspen	Populus tremuloides	19	G	G	G	1.5	Asymmetrical crown (L)	Remove	
418	Trembling Aspen	Populus tremuloides	21	G	G	G	1.5	Asymmetrical crown (L)	Remove	
419	Trembling Aspen	Populus tremuloides	19	G	G	G	1.5	Asymmetrical crown (L)	Remove	
420	Trembling Aspen	Populus tremuloides	17	G	G	G	1.5	Asymmetrical crown (L)	Remove	
421	Trembling Aspen	Populus tremuloides	15.5	G	G	G	1.5		Remove	
422	Trembling Aspen	Populus tremuloides	23.5	G	G	G	2.5	Asymmetrical crown (L)	Remove	
423	Trembling Aspen	Populus tremuloides	19.5	G	F	F	2.5	Asymmetrical crown (L)	Remove	
424	Trembling Aspen	Populus tremuloides	15	G	F	F	2.5	Asymmetrical crown (L)	Remove	
425	Trembling Aspen	Populus tremuloides	20	-	-	-	100	-	Dead	Remove
426	Trembling Aspen	Populus tremuloides	21	FG	FG	G	1.5	Lean (L), cook (L), asymmetrical crown (M)	Remove	
427	Red Oak	Quercus rubra	18	G	FG	FG	3	Asymmetrical crown (M)	Remove	
428	Trembling Aspen	Populus tremuloides	12.5	FG	FG	FG	3	Co-dominance at 2m with included bark (M)	Remove	
429	Black Cherry	Prunus serotina	13	FG	G	G			Remove	
430	Trembling Aspen	Populus tremuloides	13	-	-	-	100	-	Dead	Remove
431	Trembling Aspen	Populus tremuloides	17	FG	G	G	1.5	Lean (M), asymmetrical crown (L)	Remove	
432	White Spruce	Picea glauca	18	FG	G	G	1.5	Lean (L)	Remove	
433	White Spruce	Picea glauca	18	G	G	F	1.5	Cook (L)	Remove	
434	White Spruce	Picea glauca	18	G	G	F	1.5	Cook (L)	Remove	
435	Scots Pine	Pinus sylvestris	26.5	F	G	F	2	Wood pecker damage (L), co-dominance in crown, sparse crown (M)	Remove	
436	Red Oak	Quercus rubra	13	G	G	G	60	2	Sparse crown (H)	Remove
437	White Spruce	Picea glauca	12.5	G	G	F	2		Remove	
438	White Spruce	Picea glauca	14	G	G	F	2		Remove	
439	Trembling Aspen	Populus tremuloides	11	-	-	-	100	-	Dead	Remove
440	Trembling Aspen	Populus tremuloides	12.5	-	-	-	100	-	Failed to ground	Remove
441	Sugar Maple	Acer saccharum	19.5	G	G	G	3.5		Remove	
442	Trembling Aspen	Populus tremuloides	14	FG	G	G	1.5	Cook (L)	Remove	
443	Trembling Aspen	Populus tremuloides	10	F	F	F	1	Asymmetrical crown (H), cook (M)	Remove	
444	Trembling Aspen	Populus tremuloides	10	FG	F	F	1	Asymmetrical crown (L), asymmetrical crown (M)	Remove	
445	Trembling Aspen	Populus tremuloides	10.5	G	F	P	60	1	Sparse crown (M)	Remove
446	Trembling Aspen	Populus tremuloides	17	FG	G	G	2.0	Cook (L), asymmetrical crown (L)	Remove	
447	Trembling Aspen	Populus tremuloides	17	G	G	F	2.0	Cook (L), asymmetrical crown (L)	Remove	
448	Trembling Aspen	Populus tremuloides	13	-	-	-	100	-	Dead	Remove
449	Trembling Aspen	Populus tremuloides	13	-	-	-	100	-	Dead	Remove
450	Trembling Aspen	Populus tremuloides	18	FG	G	PF	1.5	Diurnal crown (H)	Remove	
451	Poplar Species	Populus spp.	10.5	-	-	-	100	-	Dead	Remove
452	Trembling Aspen	Populus tremuloides	48	FG	G	FG	1.5	Co-dominance at 0.3m with included bark (M)	Remove	
453	Red Oak	Quercus rubra	11	G	F	F	50	1	Dead	Remove
454	Trembling Aspen	Populus tremuloides	21.20	FG	G	G	100	2	Co-dominance at base	Remove
455	White Spruce	Picea glauca	18	-	-	-	100	-	Dead	Remove
456	White Spruce	Picea glauca	31.28	FG	G	PF	3.0	3	Co-dominance at base, sparse crown (M)	Remove
457	White Spruce	Picea glauca	12	G	G	F	1.5		Remove	
458	Trembling Aspen	Populus tremuloides	12	G	G	F	1.5		Remove	
459	White Spruce	Picea glauca	32.8	G	G	F	2.5	2.5	Dead	Remove
460	White Spruce	Picea glauca	32.8	G	G	F	2.5	2.5	Dead	Remove
461	Trembling Aspen	Populus tremuloides	32.8	G	G	F	2.5	2.5	Dead	Remove
462	Trembling Aspen	Populus tremuloides	32.8	G	G	F	2.5	2.5	Dead	Remove
463	Whipping Willow	Salix babingtonii	-45	P	G	FG	6	(L), catty hair base	Remove	
464	Heavy Locust	Gleditsia inornata	24, 23	F	FG	FG	4.5	(M), lean (M), sweep (L), cook (L)	Remove	
465	Eastern White Cedar	Thuja occidentalis	10-25 (avg)	FG	G	G	1.5	17 trees in row, union at base	Remove	
466	Manitoba maple	Acer negundo	18	P	P	P	4.0	2	Union at base, smaller stem dead, grape	Remove
467	White Birch	Betula papyrifera	27, 23	F	F	F	3.5	(L)	Remove	
468	White Birch	Betula papyrifera	21, 14, 12	F	FG	G	10	Union at base, 20cm stem lost leader at	Remove	
469	White Birch	Betula papyrifera	26, 20, 16	PF	F	PF	4.0	5.5	Union at base, 20cm stem lost leader at	Remove
470	White Birch	Betula papyrifera	18, 18	-	-	-	100	-	Dead	Remove
471	White Birch	Betula papyrifera	23.5	P	F	PF	2.0	2	branches (M), vertical crack (M), dead	Remove
472	White Birch	Betula papyrifera	36	P	P	P	6.0	2	at union, early hollow stem, dead	Remove
473	Manitoba maple	Acer negundo	40-60 (avg)	P	P	P	9.0	4	dead except epicormic branches (M) at base, epicormic branches (H)	Remove
474	Manitoba maple	Acer negundo	52	P	P	P	5.0	4	Union at base (4 stems), bow (L), lean (M)	Remove
475	Apple Species	Malus spp.	17, 16, 16	P	P	P	5.0	4	Union at base (4 stems), bow (L), lean (M)	Remove
476	Norway Spruce	Picea canadensis	-45	-	-	-	100	-	Dead	Remove
477	Whipping Willow	Salix babingtonii	22	F	F	F	2.0	6	Broken branches (M), cavity	Remove
478	White Spruce	Picea glauca	22	G	P	PF	6.0	2	Dead leader	Remove
479	Whipping Willow	Salix babingtonii	46	P	F	F	1.5	4	epicormic branches (M), cavity/year bark	Remove
480	Whipping Willow	Salix babingtonii	46	P	F	F	1.5	4	epicormic branches (M), cavity/year bark	Remove
481	Asiatican Pine	Pinus nigra	31	FG	G	F	2.0	2	Bow (L)	Remove
482	Asiatican Pine	Pinus nigra	31	FG	G	PF	2.0	2	Co-dominance at 3m, sparse crown (M)	Remove
483	Asiatican Pine	Pinus nigra	31	FG	G	PF	2.0	2	Sparse crown (M)	Remove
484	Asiatican Pine	Pinus nigra	31	FG	G	PF	2.0	2	Sparse crown (M)	Remove
485	Asiatican Pine	Pinus nigra	31	FG	G	PF	2.0	2	Sparse crown (M)	Remove
486	White Birch	Betula papyrifera	23.5, 14	FG	F	F	1.5	2	Union at base, also tagged 724	Remove
487	White Birch	Betula papyrifera	21.5, 14.5	F	F	F	2.0	3.5	Union at base, lean (L), bow (M), also	Remove
488	White Birch	Betula papyrifera	12.5, 11, 10	FG	G	F	2.0	2	Cook (M), asymmetrical crown (L)	Remove
489	White Birch	Betula papyrifera	18	FG	G	F	2.0	2	Cook (M), asymmetrical crown (L)	Remove
490	White Birch	Betula papyrifera	22	G	F	F	3.0	3	Union at 1m with included bark (M)	Remove
491	White Birch	Betula papyrifera	22	G	F	F	3.0	3	Union at 1m with included bark (M)	Remove
492	White Birch	Betula papyrifera	22	G	F	F	3.0	3	Union at 1m with included bark (M)	Remove
493	White Birch	Betula papyrifera	22	G	F	F	3.0	3	Union at 1m with included bark (M)	Remove
494	White Birch	Betula papyrifera	22	G	F	F	3.0	3	Union at 1m with included bark (M)	Remove
495	White Birch	Betula papyrifera	22	G	F	F	3.0	3	Union at 1m with included bark (M)	Remove
496	White Birch	Betula papyrifera	22	G	F	F	3.0	3	Union at 1m with included bark (M)	Remove
497	White Birch	Betula papyrifera	22	G	F	F	3.0	3	Union at 1m with included bark (M)	Remove
498	White Birch	Betula papyrifera	22	G	F	F	3.0	3	Union at 1m with included bark (M)	Remove
499	White Birch	Betula papyrifera	22	G	F	F	3.0	3	Union at 1m with included bark (M)	Remove
500	White Birch	Betula papyrifera	22	G	F	F	3.0	3	Union at 1m with included bark (M)	Remove
501	White Birch	Betula papyrifera	22	G	F	F	3.0	3	Union at 1m with included bark (M)	Remove
502	White Birch	Betula papyrifera	22	G	F	F	3.0	3	Union at 1m with included bark (M)	Remove
503	White Birch	Betula papyrifera	22	G	F	F	3.0	3	Union at 1m with included bark (M)	Remove
504	White Birch	Betula papyrifera	22	G	F	F	3.0	3	Union at 1m with included bark (M)	Remove
505	White Birch	Betula papyrifera	22	G	F	F	3.0	3	Union at 1m with included bark (M)	Remove
506	White Birch	Betula papyrifera	22	G	F	F	3.0	3	Union at 1m with included bark (M)	Remove
507	White Birch	Betula papyrifera	22	G	F	F	3.0	3	Union at 1m with included bark (M)	Remove
508	White Birch	Betula papyrifera	22	G	F	F	3.0	3	Union at 1m with included bark (M)	Remove
509	White Birch	Betula papyrifera	22	G	F	F	3.0	3	Union at 1m with included bark (M)	Remove
510	White Birch	Betula papyrifera	22	G	F	F	3.0	3	Union at 1m with included bark (M)	Remove
511	White Birch	Betula papyrifera	22	G	F	F	3.0	3	Union at 1m with included bark (M)	Remove
512	White Birch	Betula papyrifera	22	G	F	F	3.0	3	Union at 1m with included bark (M)	Remove
513	White Birch	Betula papyrifera	22	G	F	F	3.0	3	Union at 1m with included bark (M)	Remove
514	White Birch	Betula papyrifera	22	G	F	F	3.0	3	Union at 1m with included bark (M)	Remove
515										

