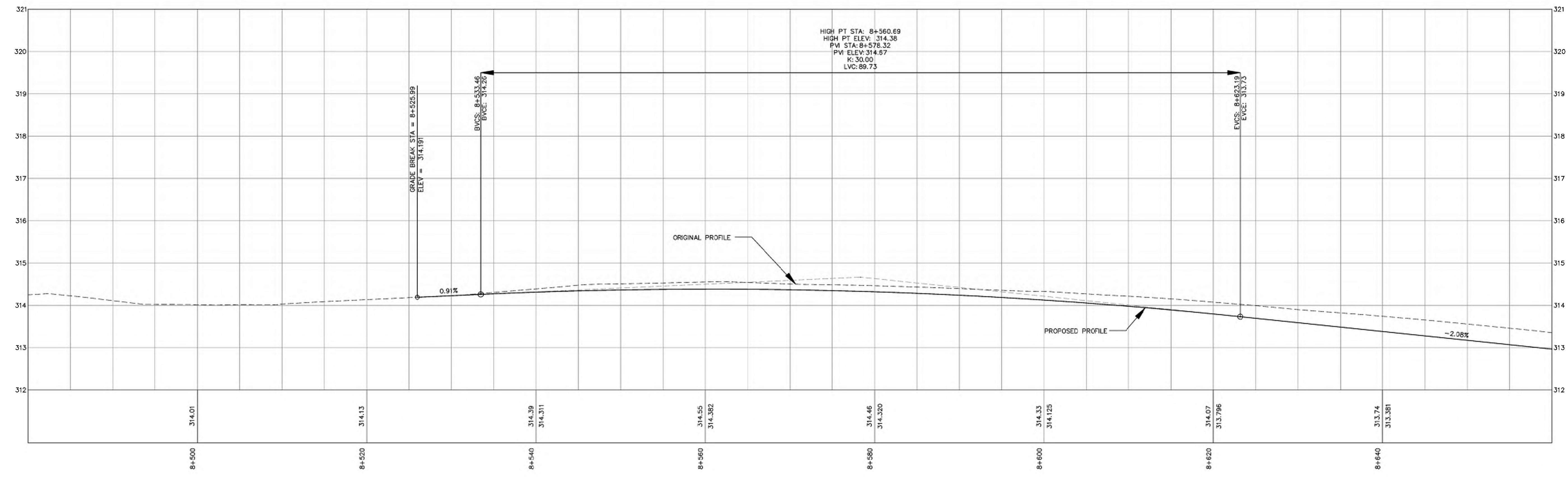
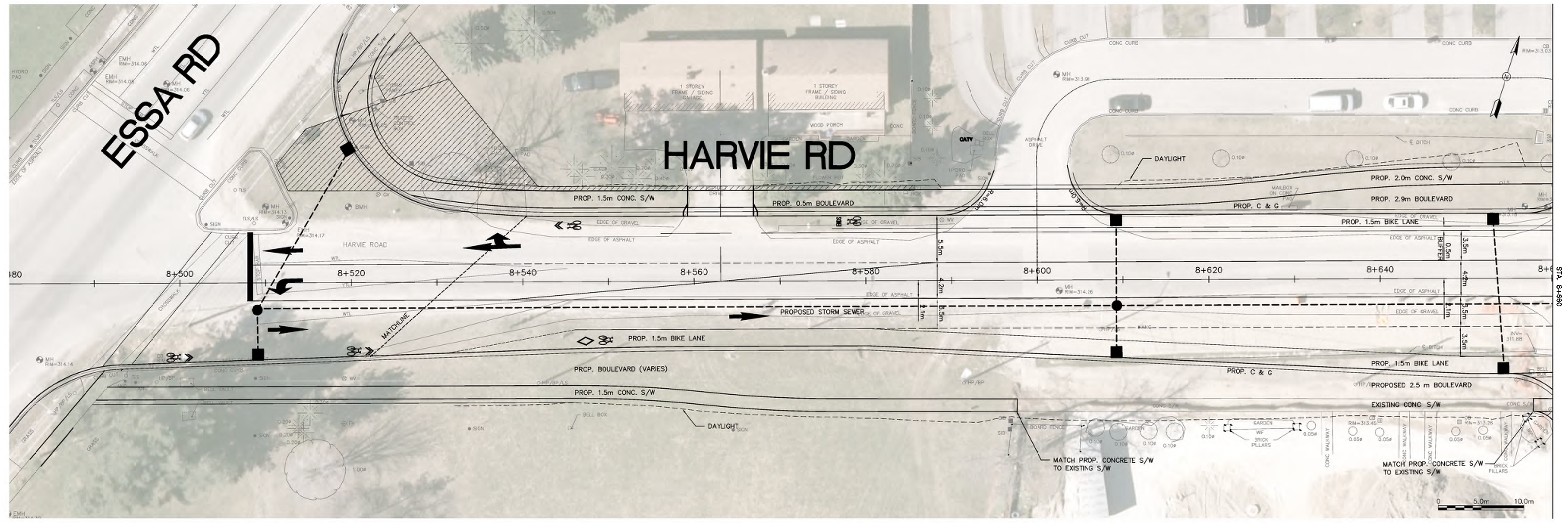


Appendix G

Preferred Design Concepts

G1 - Harvie Road
G2 - Essa Road
G3 - Bryne Drive

G1 - Harvie Road



HATCH

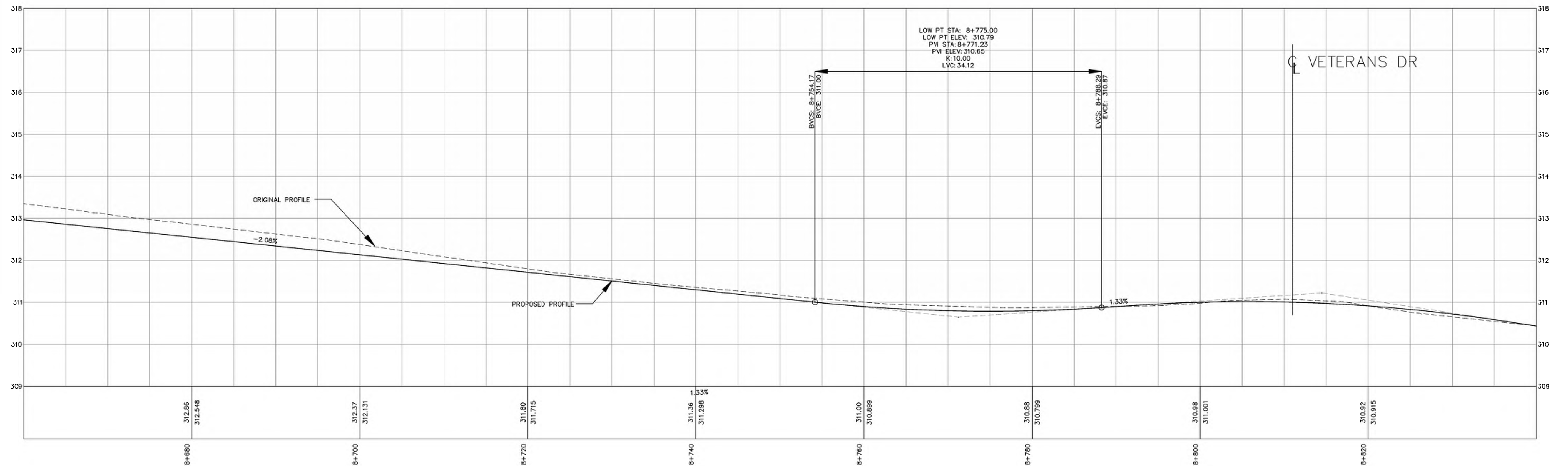
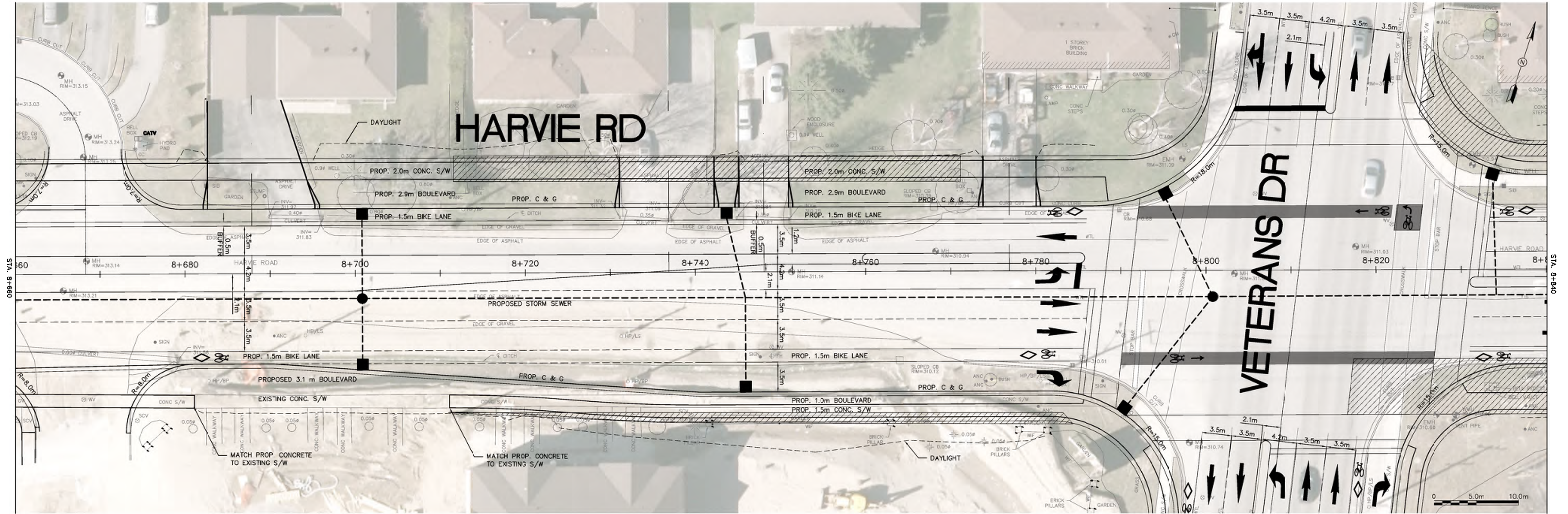
NO.	REVISIONS	DATE	APPROVED
A	PREFERRED ALTERNATIVE	2017.08.25	-
B	PREFERRED ALTERNATIVE	2017.10.04	-

CITY OF BARRIE
APPROVED
DATE:
DIRECTOR OF ENGINEERING

TRANSPORTATION IMPROVEMENTS FOR
BRYNE DRIVE, HARVIE ROAD & ESSA ROAD
ENVIRONMENTAL ASSESSMENT STAGES 3&4
HARVIE ROAD
PLAN AND PROFILE

The City of
BARRIE
ENGINEERING DEPARTMENT
SCALE HOR. 1:250 VERT. 1:50
DESIGN V.V. DRAWN M.S.
REVIEWED ### DATE 2017.10.04
CONTRACT NO. _____
SHEET NO. **001**

DATE PLOTTED: 10/26/2016 2:51:11 PM
FILE LOCATION: C:\networking\hatch\353437-25-003-YYY1.dwg



HATCH

NO.	REVISIONS	DATE	APPROVED
A	PREFERRED ALTERNATIVE	2017.08.25	-
B	PREFERRED ALTERNATIVE	2017.10.04	-

CITY OF BARRIE
APPROVED

DATE:
DIRECTOR OF ENGINEERING

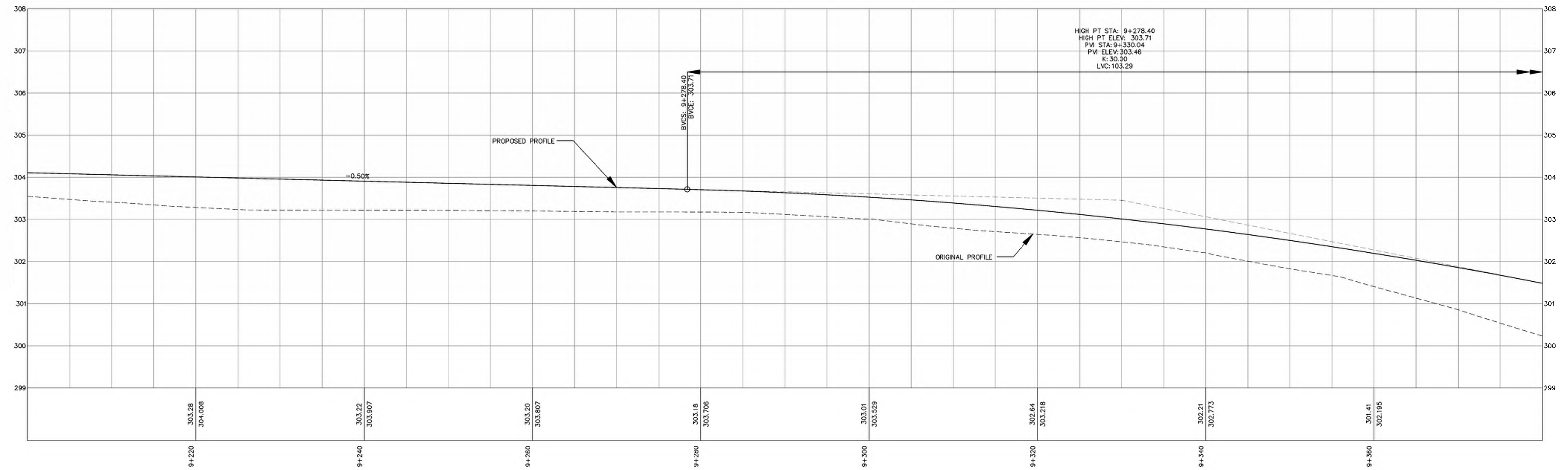
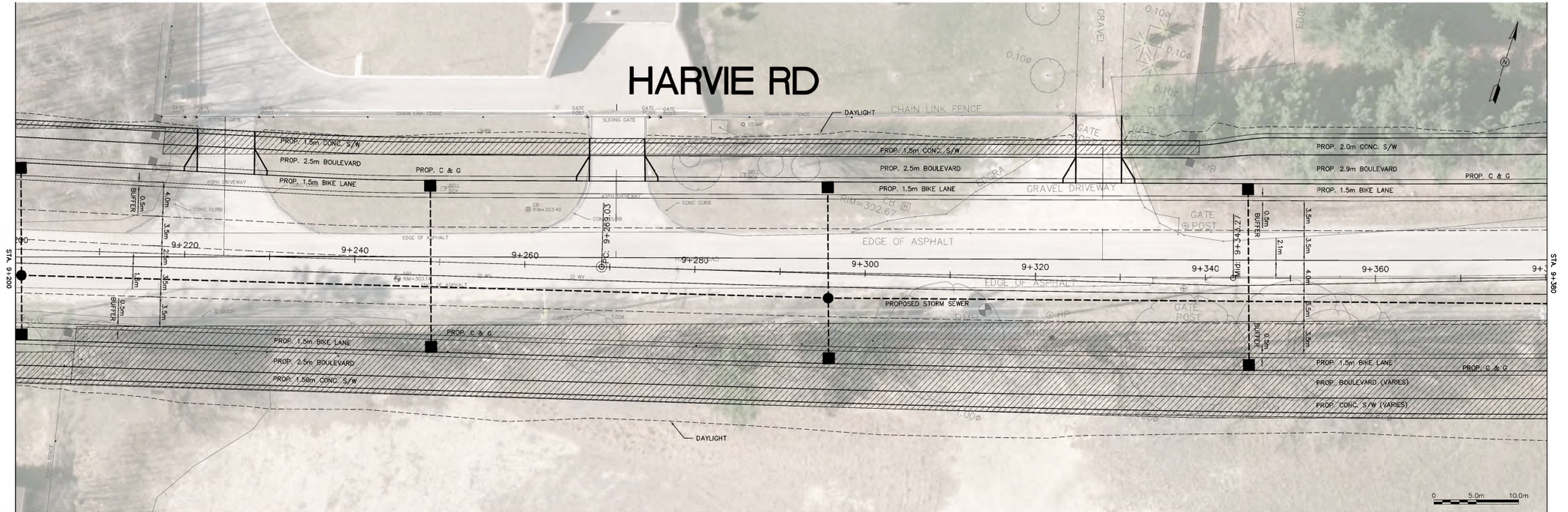
TRANSPORTATION IMPROVEMENTS FOR
BRYNE DRIVE, HARVIE ROAD & ESSA ROAD

ENVIRONMENTAL ASSESSMENT STAGES 3&4
HARVIE ROAD
PLAN AND PROFILE

The City of
BARRIE
ENGINEERING DEPARTMENT

SCALE	HOR. 1:250	VERT. 1:50	CONTRACT NO. -
DESIGN	V.V.	DRAWN M.S.	SHEET NO. 002
REVIEWED	###	DATE 2017.10.04	

DOC: H-353437-25-003-YYY1-002



HATCH

NO.	REVISIONS	DATE	APPROVED
A	PREFERRED ALTERNATIVE	2017.08.25	-
B	PREFERRED ALTERNATIVE	2017.10.04	-

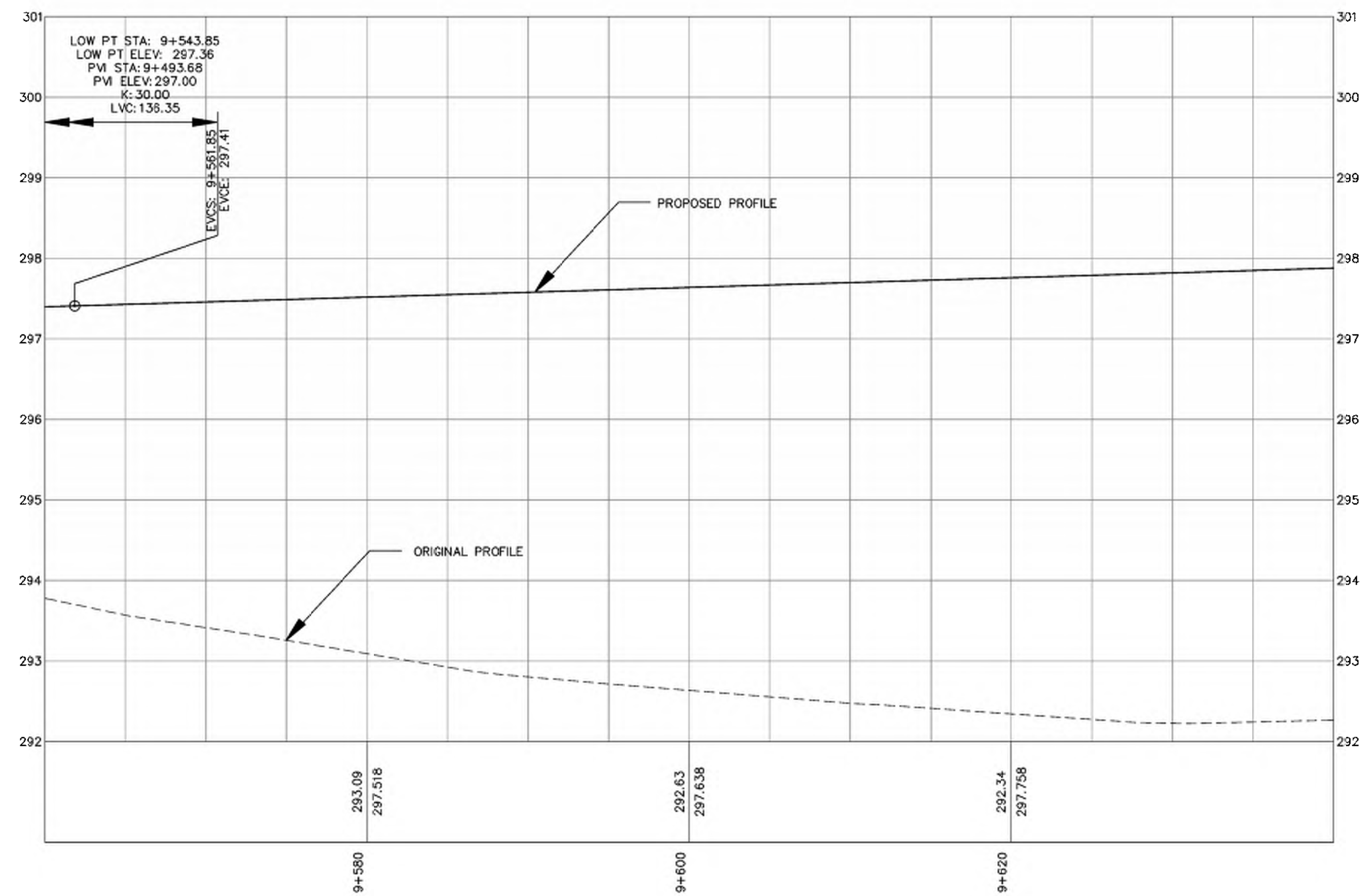
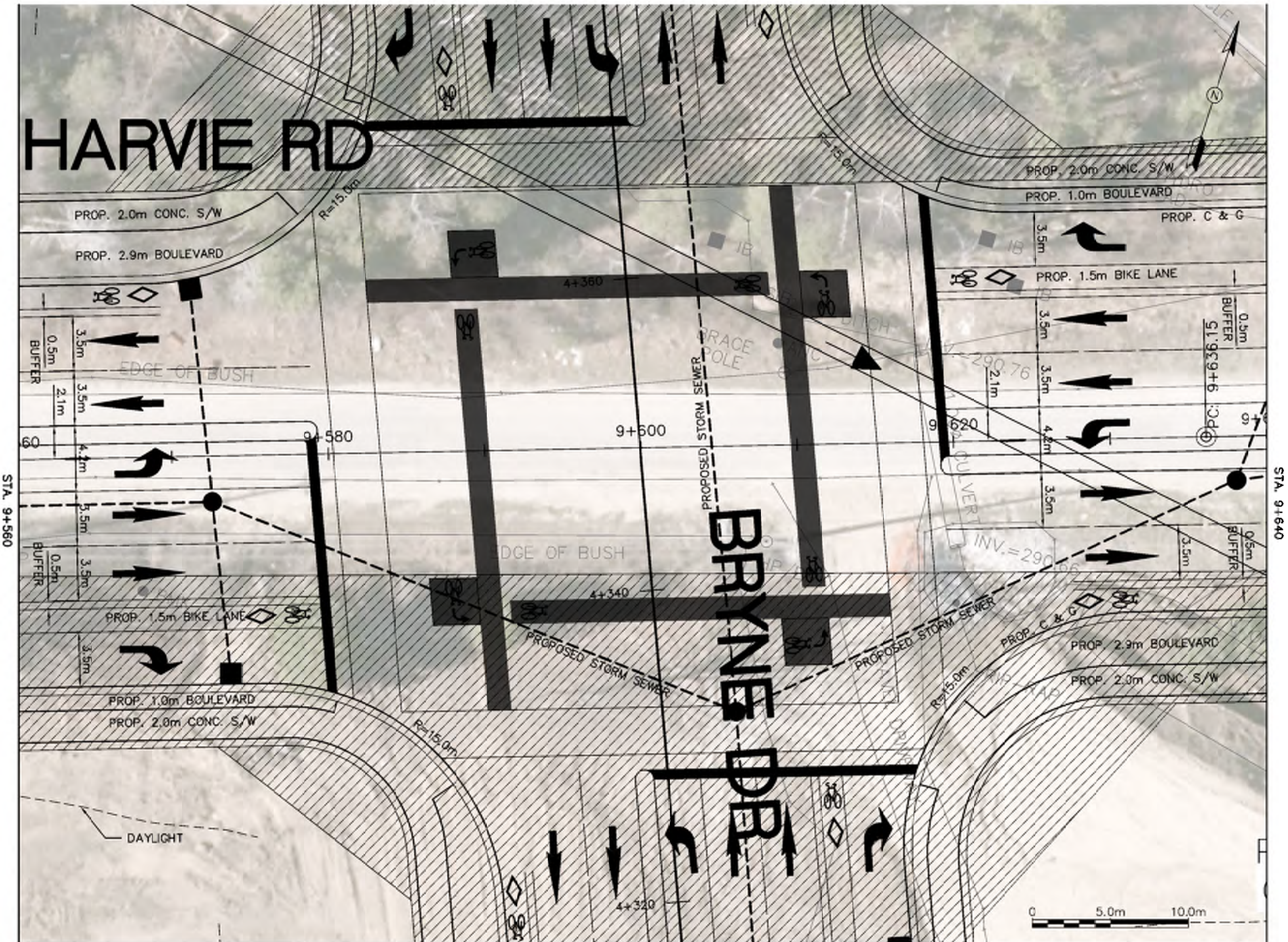
CITY OF BARRIE
APPROVED
DATE:
DIRECTOR OF ENGINEERING

TRANSPORTATION IMPROVEMENTS FOR
BRYNE DRIVE, HARVIE ROAD & ESSA ROAD
ENVIRONMENTAL ASSESSMENT STAGES 3&4
HARVIE ROAD
PLAN AND PROFILE

The City of
BARRIE
ENGINEERING DEPARTMENT

SCALE HOR. 1:250	VERT. 1:50	CONTRACT NO. -
DESIGN V.V.	DRAWN M.S.	SHEET NO. 005
REVIEWED ###	DATE 2017.10.04	

DOC: H-353437-25-003-YYY1-004



DATE PLOTTED: 10/26/2016 2:51:11 PM
FILE LOCATION: C:\networking\h\barrie\889662\40226782\H-353437-25-003-YYY1.dwg

HATCH

NO.	REVISIONS	DATE	APPROVED
A	PREFERRED ALTERNATIVE	2017.08.25	-
B	PREFERRED ALTERNATIVE	2017.10.04	-

CITY OF BARRIE
APPROVED
DATE:
DIRECTOR OF ENGINEERING

**TRANSPORTATION IMPROVEMENTS FOR
BRYNE DRIVE, HARVIE ROAD & ESSA ROAD**
ENVIRONMENTAL ASSESSMENT STAGES 3&4
HARVIE ROAD
PLAN AND PROFILE

The City of
BARRIE
ENGINEERING DEPARTMENT

SCALE HOR. 1:250	VERT. 1:50	CONTRACT NO. -
DESIGN V.V.	DRAWN M.S.	SHEET NO. 007
REVIEWED ###	DATE 2017.10.04	

DOC: H-353437-25-003-YYY1-007