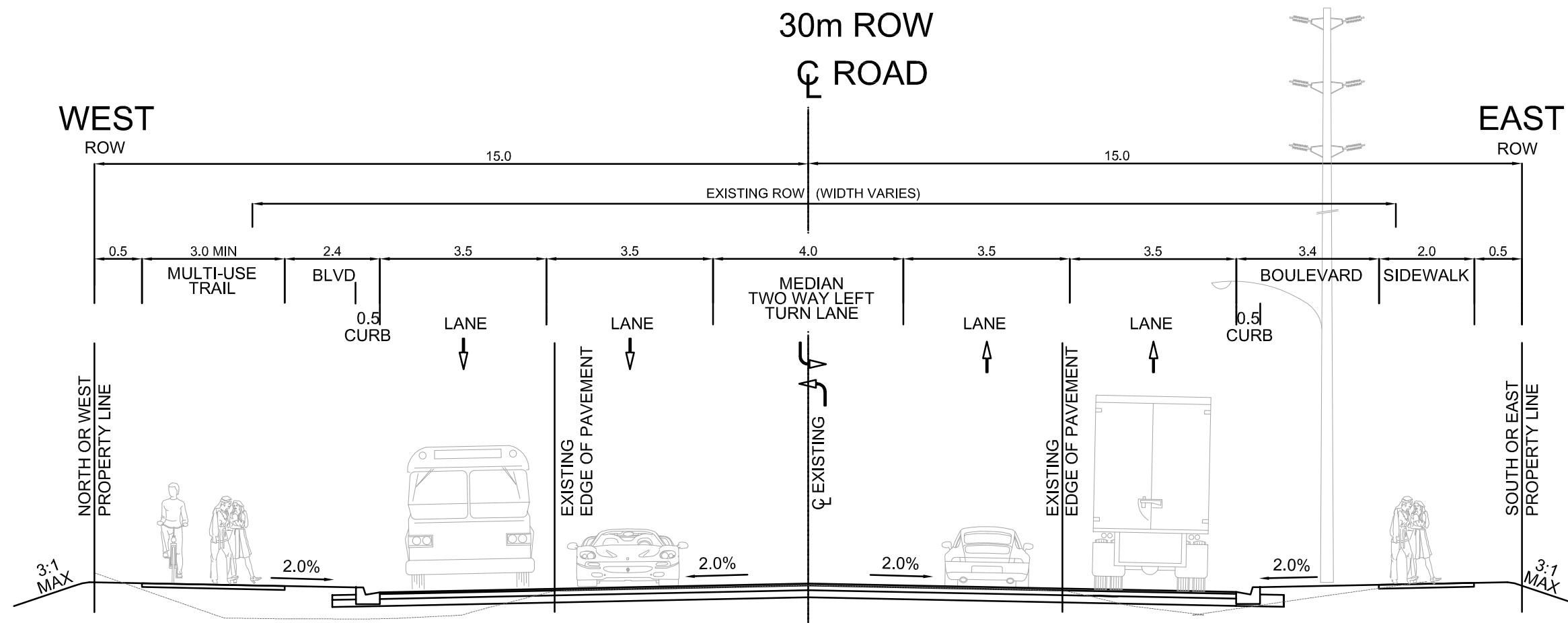


G2 - Essa Road



TYPICAL CROSS SECTION
 5 LANES WITH TWO WAY LEFT TURN LANE MEDIAN
 (PREFERRED ALTERNATIVE)

DATE PLOTTED: 10/26/2016 2:51:11 PM
 FILE LOCATION: C:\pwworking\hatch\861962\0231600\Essa Road Profile 30m ROW (With Crest and Sep)_recover1.dwg



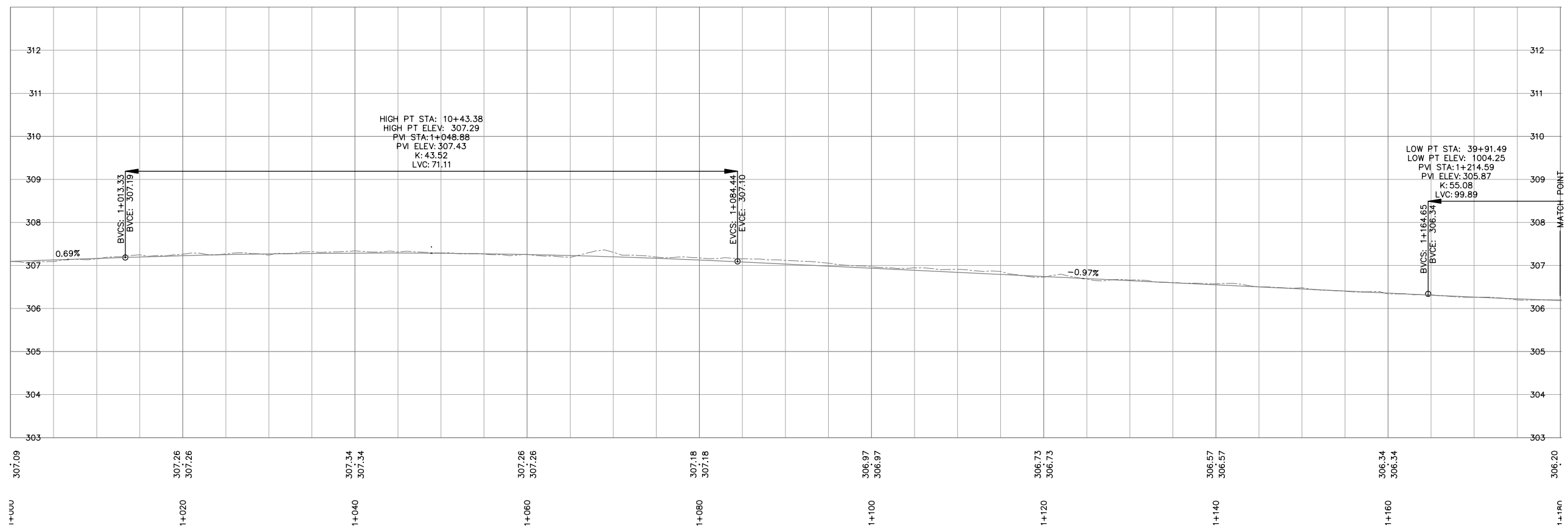
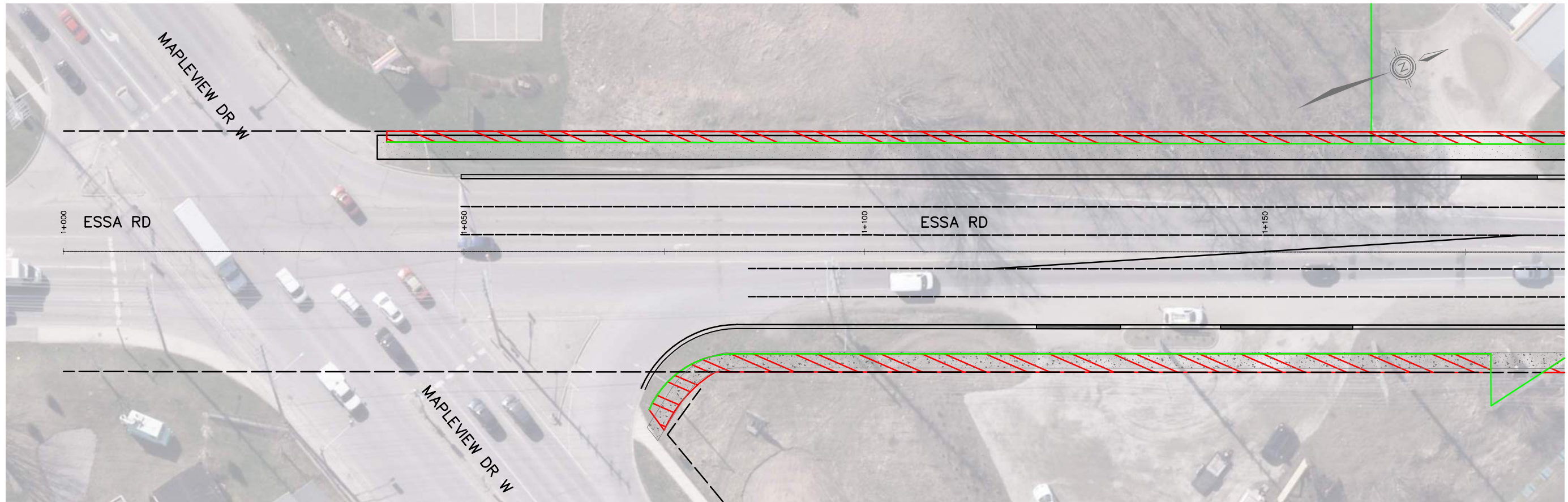
NO.	REVISIONS	DATE	APPROVED
A	PREFERRED ALTERNATIVE	-	-

CITY OF BARRIE
 APPROVED
 DATE

TRANSPORTATION IMPROVEMENTS FOR
 BRYNE DRIVE, HARVIE ROAD & ESSA ROAD
 STATION 1+000 TO 1+1900
 ESSA ROAD
 PLAN AND PROFILE

The City of
BARRIE
 ENGINEERING DEPARTMENT

SCALE HOR. 1:1500	VERT. 1:300	CONTRACT NO. _
DESIGN ###	DRAWN P.G.C.	SHEET NO. P000
REVIEWED ###	DATE 2017-08-28	



DATE PLOTTED: 10/26/2016 2:51:11 PM
 FILE LOCATION: C:\pwworking\hatch\861962\40231600\Essa Road Profile 30m ROW (With Crest and Sag)_recover1.dwg



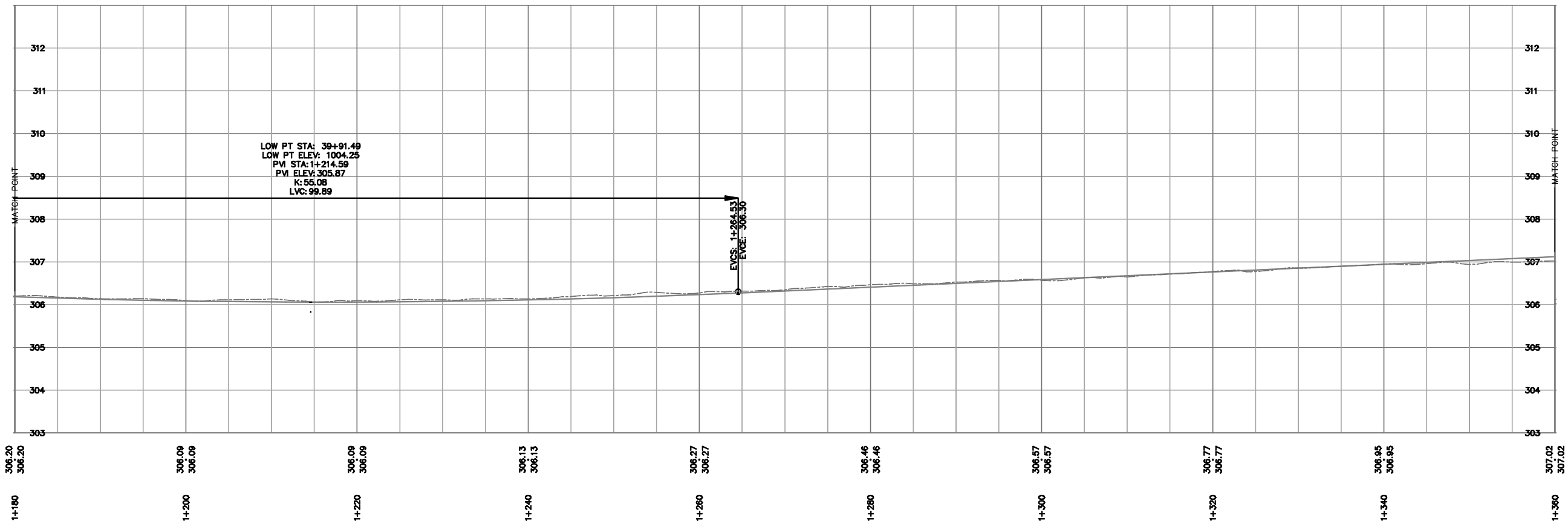
NO.	REVISIONS	DATE	APPROVED
A	PREFERRED ALTERNATIVE	-	-

CITY OF BARRIE
 APPROVED
 DATE
 DIRECTOR OF ENGINEERING

**TRANSPORTATION IMPROVEMENTS FOR
 BRYNE DRIVE, HARVIE ROAD & ESSA ROAD**
 STATION 1+000 TO 1+180
 ESSA ROAD
 PLAN AND PROFILE

The City of
BARRIE
 ENGINEERING DEPARTMENT

SCALE HOR. 1:250	VERT. 1:50	CONTRACT NO. _
DESIGN ###	DRAWN P.C.C.	SHEET NO. P001
REVIEWED ###	DATE 2017-08-28	



DATE PLOTTED: 10/26/2016 2:51:11 PM
FILE LOCATION: C:\pwworking\hatch\861962\0231600\Essa Road Profile 30m ROW (With Crest and Sag)_recover1.dwg



NO.	REVISIONS	DATE	APPROVED
A	PREFERRED ALTERNATIVE	-	-

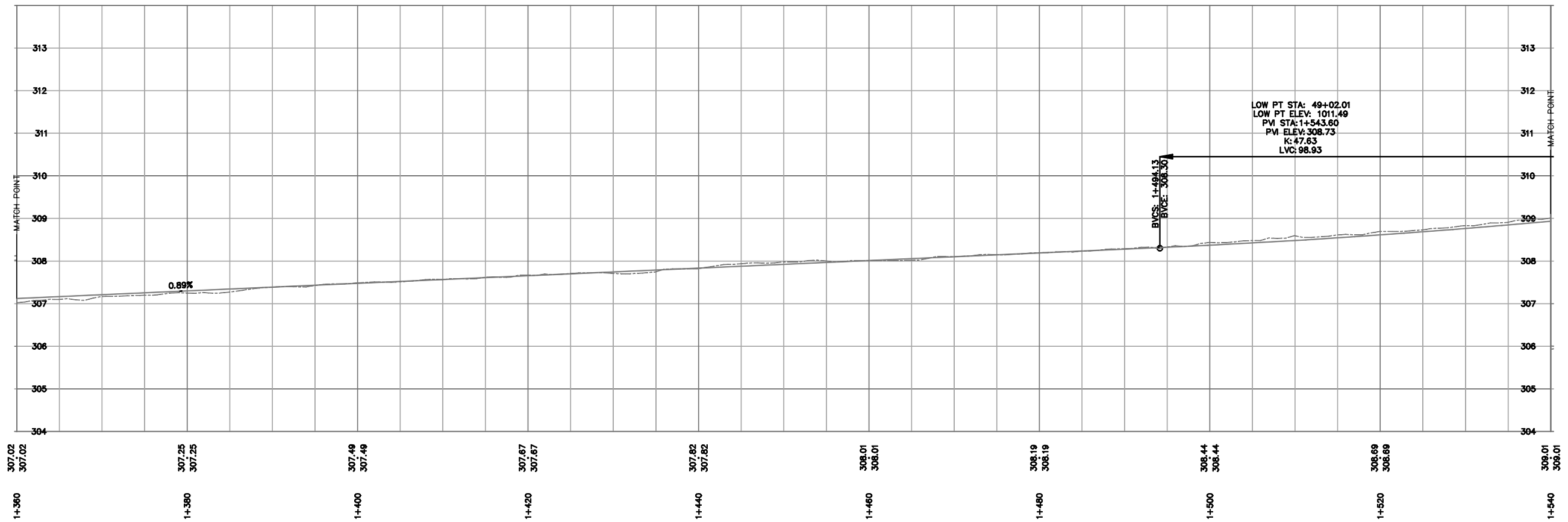
CITY OF BARRIE
APPROVED
DATE

TRANSPORTATION IMPROVEMENTS FOR
BRYNE DRIVE, HARVIE ROAD & ESSA ROAD

STATION 1+180 TO 1+360
ESSA ROAD
PLAN AND PROFILE

The City of
BARRIE
ENGINEERING DEPARTMENT

SCALE HOR. 1:250	VERT. 1:50	CONTRACT NO. _
DESIGN ###	DRAWN P.C.C.	SHEET NO. P002
REVIEWED ###	DATE 2017-08-28	



DATE PLOTTED: 10/26/2016 2:51:11 PM
FILE LOCATION: C:\pwworking\hatch\861962\0231600\Essa Road Profile 30m ROW (With Crest and Sag)_recover1.dwg

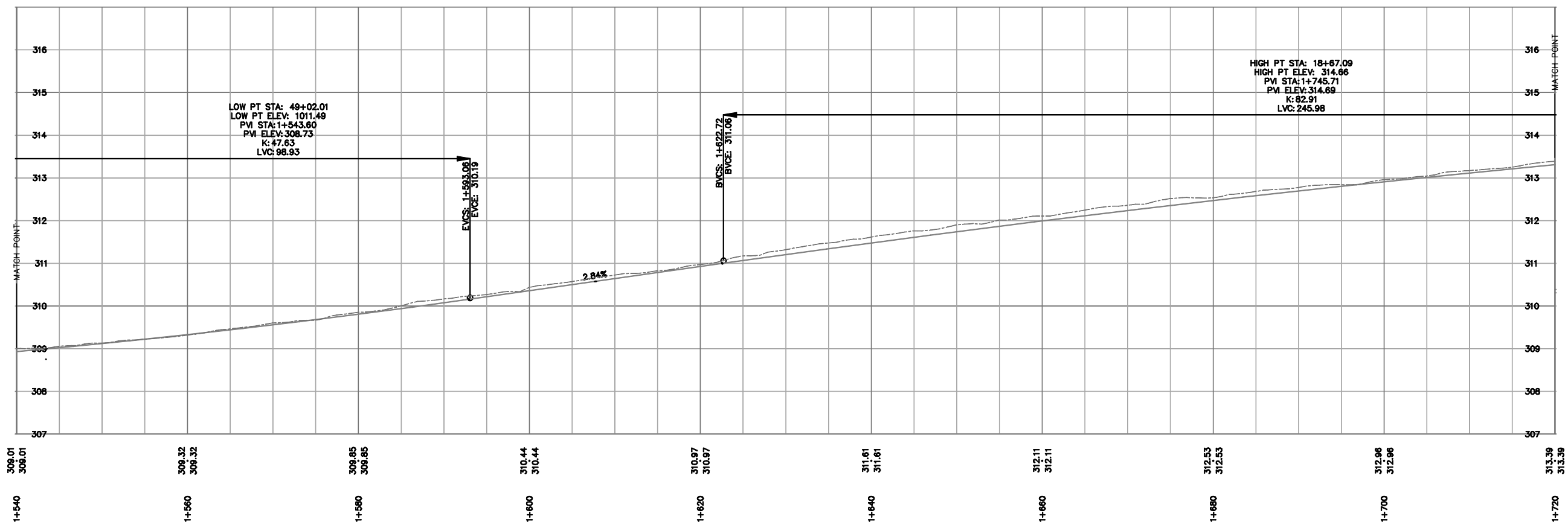
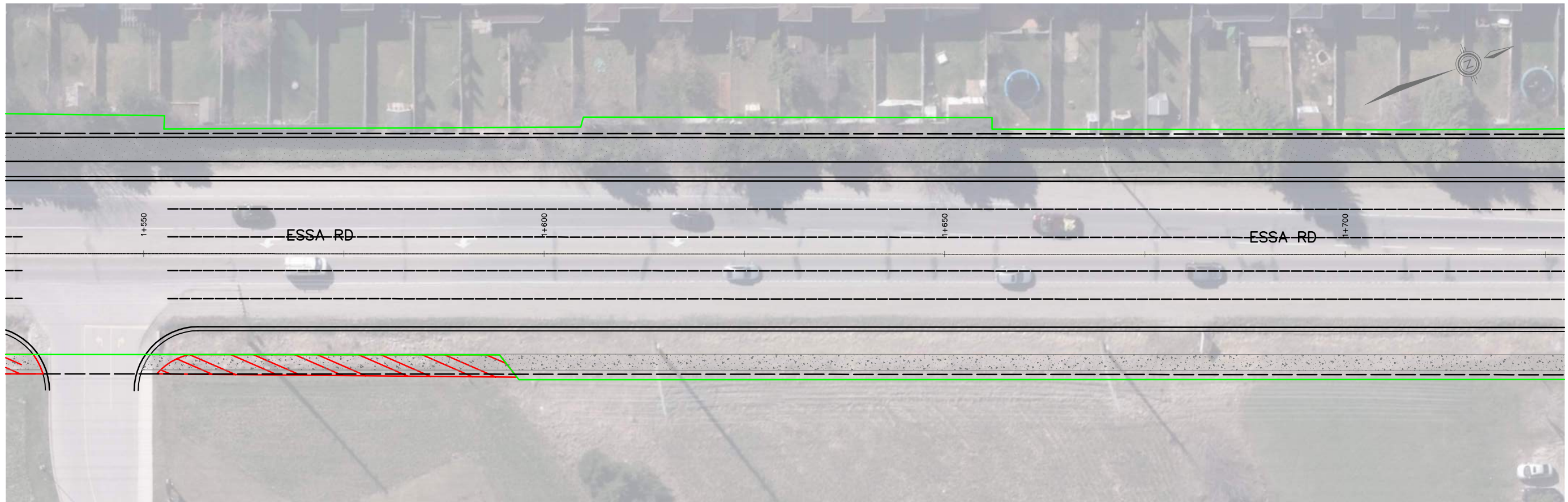


NO.	REVISIONS	DATE	APPROVED
A	PREFERRED ALTERNATIVE	-	-

CITY OF BARRIE
APPROVED
DATE

TRANSPORTATION IMPROVEMENTS FOR
BRYNE DRIVE, HARVIE ROAD & ESSA ROAD
STATION 1+360 TO 1+540
ESSA ROAD
PLAN AND PROFILE

The City of
BARRIE
ENGINEERING DEPARTMENT
SCALE HOR. 1:250 VERT. 1:50
DESIGN ### DRAWN P.C.C. CONTRACT NO. _____
REVIEWED ### DATE 2017-08-28 SHEET NO. P003



DATE PLOTTED: 10/26/2016 2:51:11 PM
FILE LOCATION: C:\pwworking\hatch\861962\0231600\Essa Road Profile 30m ROW (With Crest and Slope)_recover1.dwg



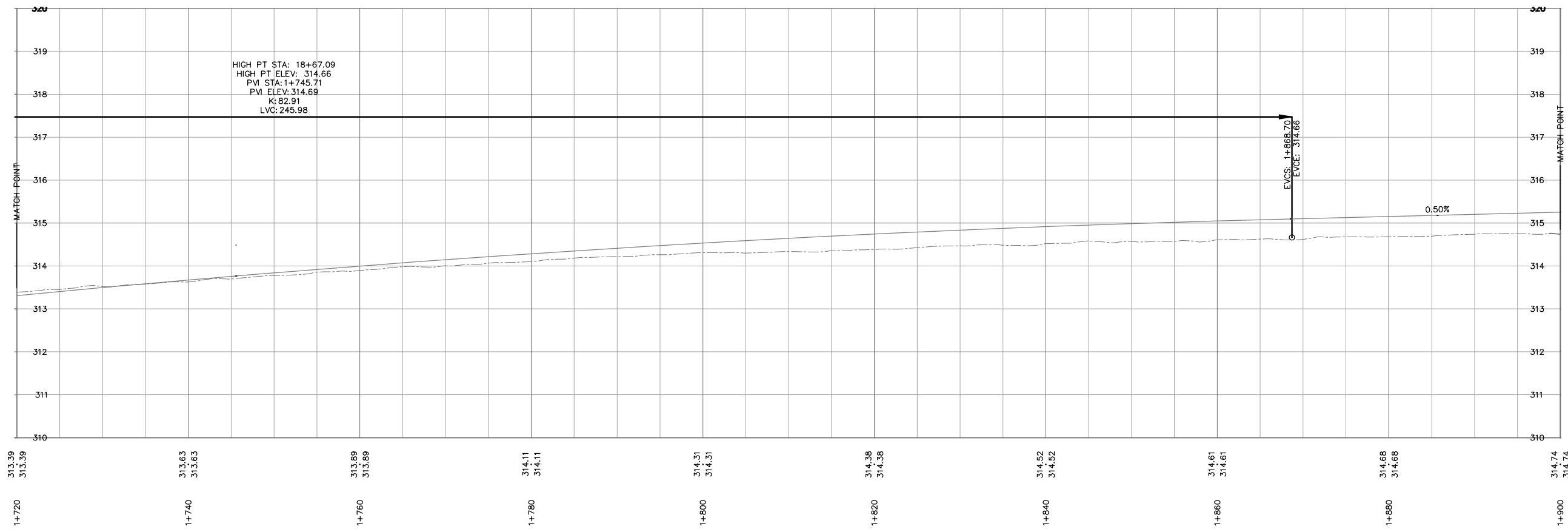
NO.	REVISIONS	DATE	APPROVED
A	PREFERRED ALTERNATIVE	-	-

CITY OF BARRIE
APPROVED
DATE

TRANSPORTATION IMPROVEMENTS FOR
BRYNE DRIVE, HARVIE ROAD & ESSA ROAD
STATION 1+540 TO 1+720
ESSA ROAD
PLAN AND PROFILE

The City of
BARRIE
ENGINEERING DEPARTMENT

SCALE HOR.	1:250	VERT.	1:50	CONTRACT NO.	
DESIGN	###	DRAWN	P.G.C.	SHEET NO.	P004
REVIEWED	###	DATE	2017-08-28		



DATE PLOTTED: 10/26/2016 2:51:11 PM
FILE LOCATION: C:\pwworking\hatch\861962\0231600\Essa Road Profile 30m ROW (With Crest and Sag)_recover1.dwg



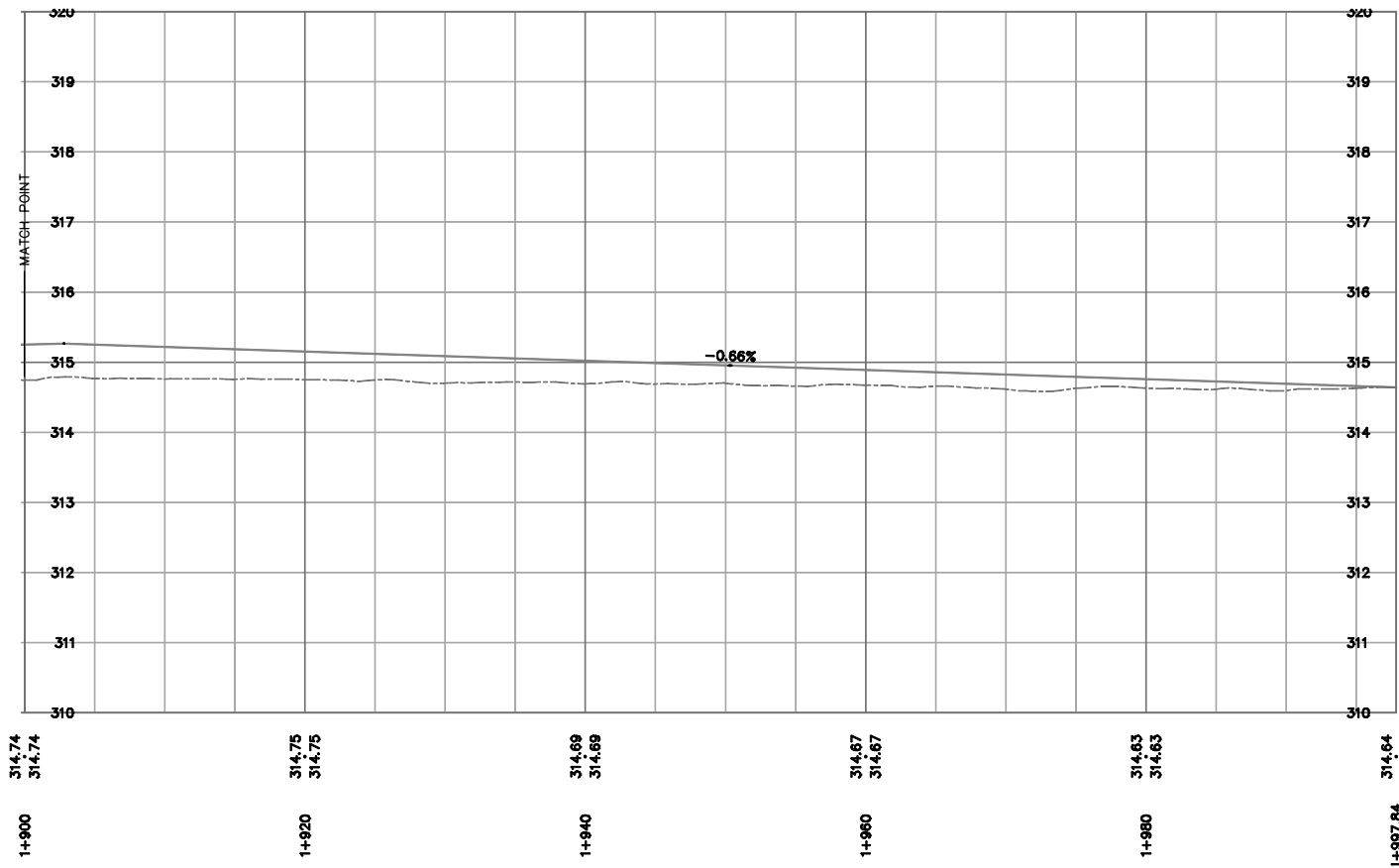
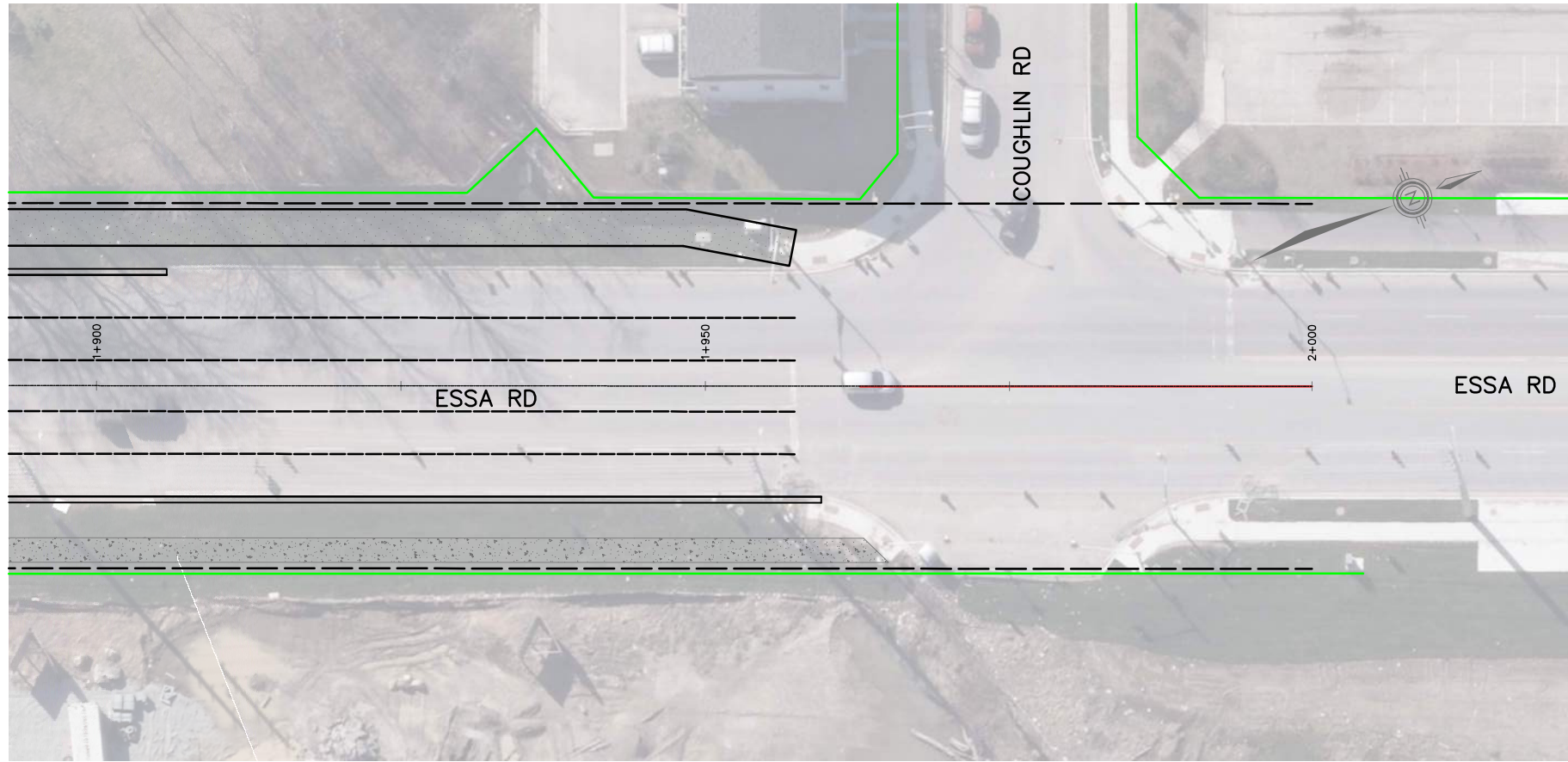
NO.	REVISIONS	DATE	APPROVED
A	PREFERRED ALTERNATIVE	-	-

CITY OF BARRIE
APPROVED
DATE

TRANSPORTATION IMPROVEMENTS FOR
BRYNE DRIVE, HARVIE ROAD & ESSA ROAD
STATION 1+720 TO 1+900
ESSA ROAD
PLAN AND PROFILE

The City of
BARRIE
ENGINEERING DEPARTMENT

SCALE HOR. 1:250	VERT. 1:50	CONTRACT NO. _
DESIGN ###	DRAWN P.C.C.	SHEET NO. P005
REVIEWED ###	DATE 2017-08-28	



DATE PLOTTED: 10/26/2016 2:51:11 PM
FILE LOCATION: C:\pwworking\hatch\861962\0231600\Essa Road Profile 30m ROW (With Crest and Stop)_recover1.dwg

HATCH

NO.	REVISIONS	DATE	APPROVED
A	PREFERRED ALTERNATIVE	-	-

CITY OF BARRIE
APPROVED
DATE

TRANSPORTATION IMPROVEMENTS FOR
BRYNE DRIVE, HARVIE ROAD & ESSA ROAD
STATION 1+900 TO 1+998
ESSA ROAD
PLAN AND PROFILE

The City of
BARRIE
ENGINEERING DEPARTMENT

SCALE HOR. 1:250	VERT. 1:50	CONTRACT NO. _
DESIGN ###	DRAWN P.G.C.	SHEET NO. P006
REVIEWED ###	DATE 2017-08-28	