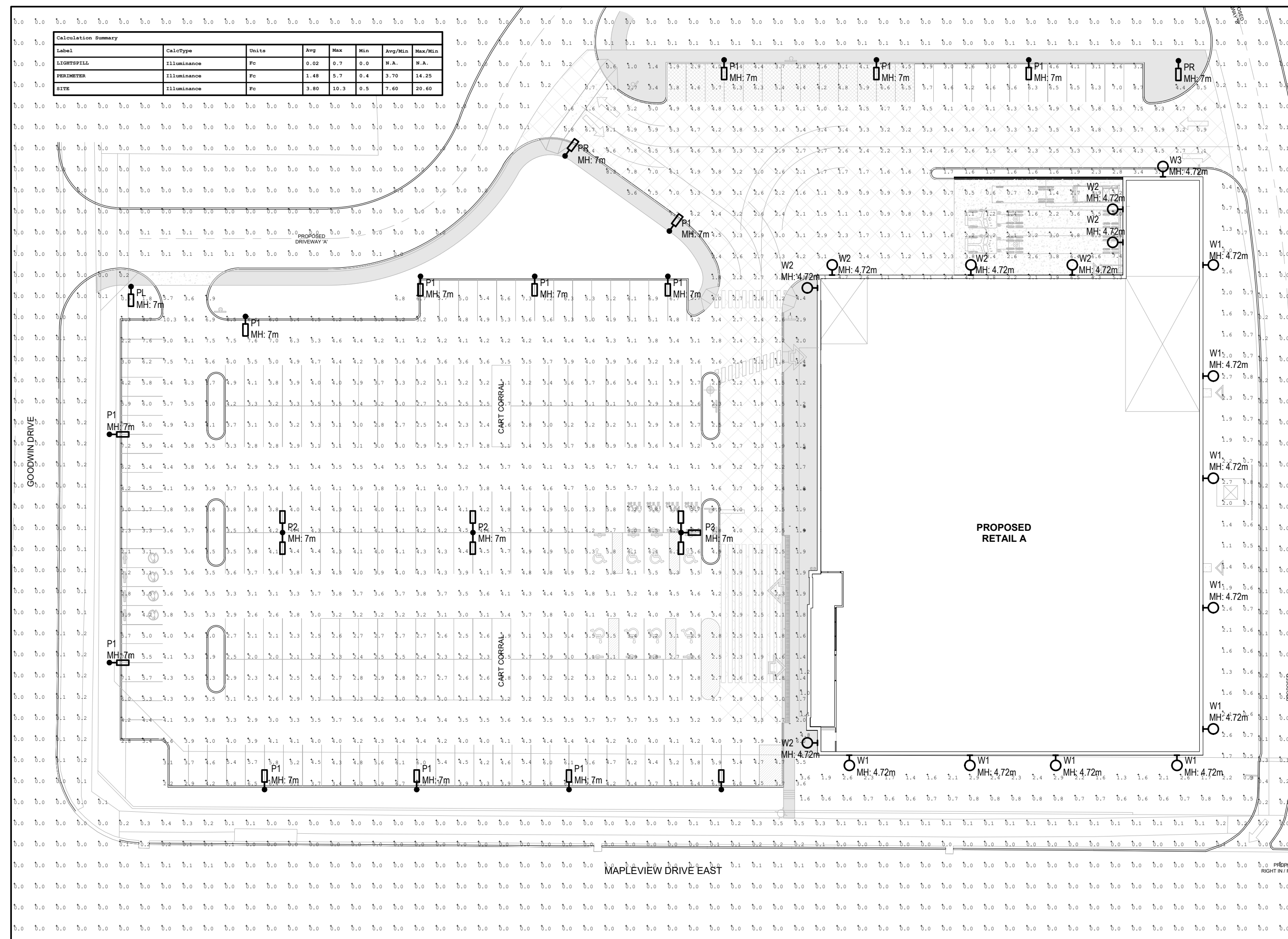
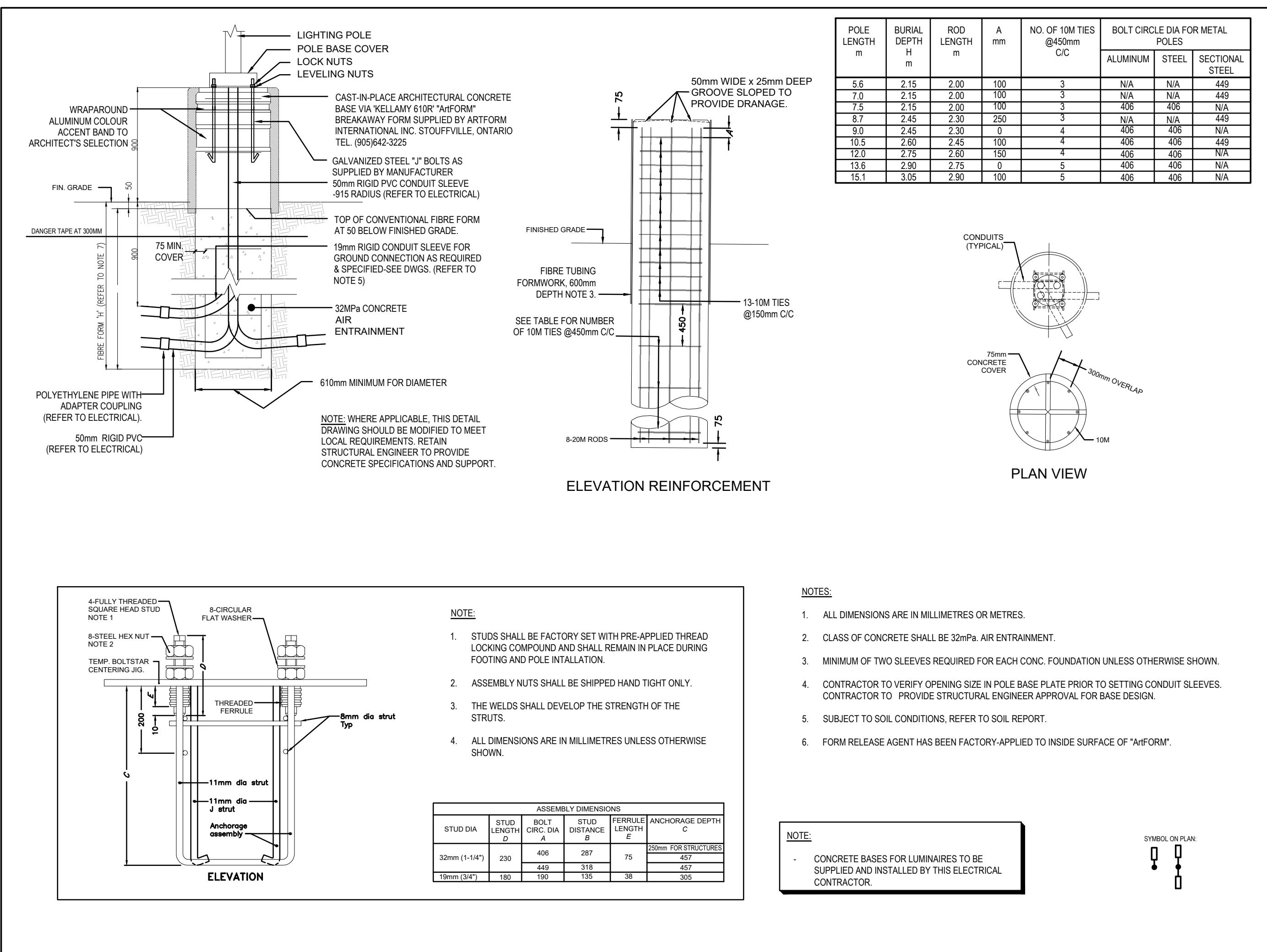


1 SITE PLAN - LIGHTING
 E200 1:500



3 SITE PLAN - LIGHTING PHOTOMETRICS
 E200 1:500



2 TYPICAL CONCRETE BASE FOR LUMINAIRE
 E200 N.T.S

LIGHTING SCHEDULE		
TYPE	IMAGE	DESCRIPTION
P1		SINGLE HEAD LED POLE MOUNTED LUMINAIRE, 17,000 LUMENS, 4000K, 17W, 34V, TYPE III DISTRIBUTION, DARK SKY COMPLIANT, BACK LIGHT CONTROL, 10KA SURGE PROTECTION, 70CRI, POLE TO SIT ON CONCRETE ARTFORM BASE BY ELECTRICAL. FINISH TO BE CONFIRMED BY ARCHITECT DURING SHOP DRAWING REVIEW. LUMINAIRES TO BE TIED INTO LOW VOLTAGE RELAY PANEL FOR ON/OFF CONTROL. MOUNTING HEIGHT: 7m (6.1m POLE + 0.9m BASE). MFR: SIGNIFY GARCOO CAT: ECF-S-64L-900-NW-G2-AR-BLC-347-SP2-COLOUR
P2		SAME AS TYPE P1 EXCEPT TWO (2) HEAD MOUNTED BACK TO BACK ON POLE, 34,000 LUMENS, TYPE V WIDE DISTRIBUTION WITHOUT BACK LIGHT CONTROL. PROVIDE MOUNTING BRACKETS AS REQUIRED TO SUIT. MOUNTING HEIGHT: 7m (6.7m POLE + 0.9m BASE). MFR: SIGNIFY GARCOO CAT: ECF-S-64L-900-NW-G2-AR-9W-347-SP2-COLOUR
P3		SAME AS TYPE P2 EXCEPT THREE (3) HEAD MOUNTED ON POLE 90 DEGREE APART. PROVIDE MOUNTING BRACKETS AS REQUIRED TO SUIT. MOUNTING HEIGHT: 7m (6.7m POLE + 0.9m BASE). MFR: SIGNIFY GARCOO CAT: ECF-S-64L-900-NW-G2-AR-9W-347-SP2-COLOUR
PL		SAME AS TYPE P1 EXCEPT 11,000 LUMENS, 17W, CORNER OPTIC LEFT DISTRIBUTION. PROVIDE MOUNTING BRACKETS AS REQUIRED TO SUIT. MOUNTING HEIGHT: 7m (6.7m POLE + 0.9m BASE). MFR: SIGNIFY GARCOO CAT: ECF-S-64L-900-NW-G2-AR-LCL-347-SP2-COLOUR
PR		SAME AS TYPE P1 EXCEPT 11,000 LUMENS, 17W, CORNER OPTIC RIGHT DISTRIBUTION. PROVIDE MOUNTING BRACKETS AS REQUIRED TO SUIT. MOUNTING HEIGHT: 7m (6.7m POLE + 0.9m BASE). MFR: SIGNIFY GARCOO CAT: ECF-S-64L-900-NW-G2-AR-RCL-347-SP2-COLOUR
W1		LED OUTDOOR WALL MOUNTED LUMINAIRE, LOW PROFILE ALUMINUM CONSTRUCTION, NO UPLIGHT COMPONENT, GASKETED AND SEALED HOUSING, 3,000 LUMENS, 4000K, 20W, 34V, TYPE II DISTRIBUTION, FINISH MEDIUM GREY COLOUR, 10KV SURGE PROTECTION, TIE INTO LOW VOLTAGE RELAY PANEL FOR ON/OFF CONTROL. MOUNTING HEIGHT: 4.72m. MFR: SIGNIFY STONCO CAT: LPW16-20-NW-G3-2-347-MGY
W2		SAME AS TYPE W1 EXCEPT 5,000 LUMENS, 50W, TYPE IV DISTRIBUTION. MOUNTING HEIGHT: 4.72m. MFR: SIGNIFY STONCO CAT: LPW16-50-NW-G3-4-347-MGY
W3		SAME AS TYPE W1 EXCEPT 2,500 LUMENS, 25W, TYPE IV DISTRIBUTION. MOUNTING HEIGHT: 4.72m. MFR: SIGNIFY STONCO CAT: LPW16-20-NW-G3-4-347-MGY
POLE		THE POLES ARE TAPERED ROUND 6.1m (20'-0") LONG SUITABLE FOR 90MPH WINDS AND SIZE SHALL BE AS PER MANUFACTURER INSTRUCTIONS. POLES ARE TO BE STEEL FINISHED WITH POLYESTER POWDER COAT. ALL POLES INCLUDE ANCHOR BOLTS, BASE COVER HAND HOLE, GROUNDING LUGS AND TOP CAP. PROVIDE 6"x7" HAND HOLE FRAME WITH COVER AND GROUND SCREW. COORDINATE KNOCKOUTS. FINISH COLOR FOR POLES AND FIXTURES SHALL BE DETERMINED AT THE TIME OF SHOP DRAWING REVIEW. ENSURE POLE DRILLING MATCHES THE MOUNTING HARDWARE OF THE LUMINAIRE. DYNAPOLE OR VALMONT. ANCHOR BOLTS ARE FABRICATED FROM CARBON STEEL BAR. BOLTS HAVE AN "L" BEND ON ONE END AND ARE GALVANIZED A MINIMUM OF 0.3mm (12") ON THE THREADED END. ANCHOR BASE IS FABRICATED FROM STRUCTURAL QUALITY HOT ROLLED CARBON STEEL PLATE. POLE SHAFT TO HAVE HIGH FREQUENCY ELECTRIC RESISTANCE WELD. POLE TOP TENDON TO BE FABRICATED FROM STRUCTURAL QUALITY HOT ROLLED CARBON STEEL PLATE.
POLE BASE		ARTFORM POLE BASE BY ELECTRICAL CONTRACTOR. TO BE 1m (3'-0") HIGH A.F.F. ENSURE BASE IS CAPABLE TO WITHSTAND EPA OF LUMINAIRE.

LUMINAIRE SCHEDULE NOTES:
 1. THIS ELECTRICAL CONTRACTOR SHALL SUPPLY AND INSTALL AND WIRE ALL LIGHTING PRODUCTS C/W ALL ADDITIONAL MOUNTING AND SUSPENSION ACCESSORIES AS REQUIRED.
 2. ALL EXTERIOR LUMINAIRES TO BE TIED TO RELAY PANEL AND TIME CLOCK/PHOTOCELL CONTROL. INCLUDE FOR ALL COMMISSIONING AND TRAINING.

#	DATE	DESCRIPTION	BY
3	2022-11-30	ISSUED FOR SPA	MB
2	2022-11-02	ISSUED FOR DRAFT SPA	MB
1	2022-09-22	ISSUED FOR REVIEW	MB

PROJECT
MAPLEVIEW DRIVE & YONGE STREET
 BARRIE, ON

DRAWING
SITE PLAN LIGHTING

PROJECT NO. 22-044-024
 PROJECT DATE 2022-10-13
 DRAWN BY CD
 CHECKED BY MB
 SCALE INDICATED
 DRAWING NO. **E200**