

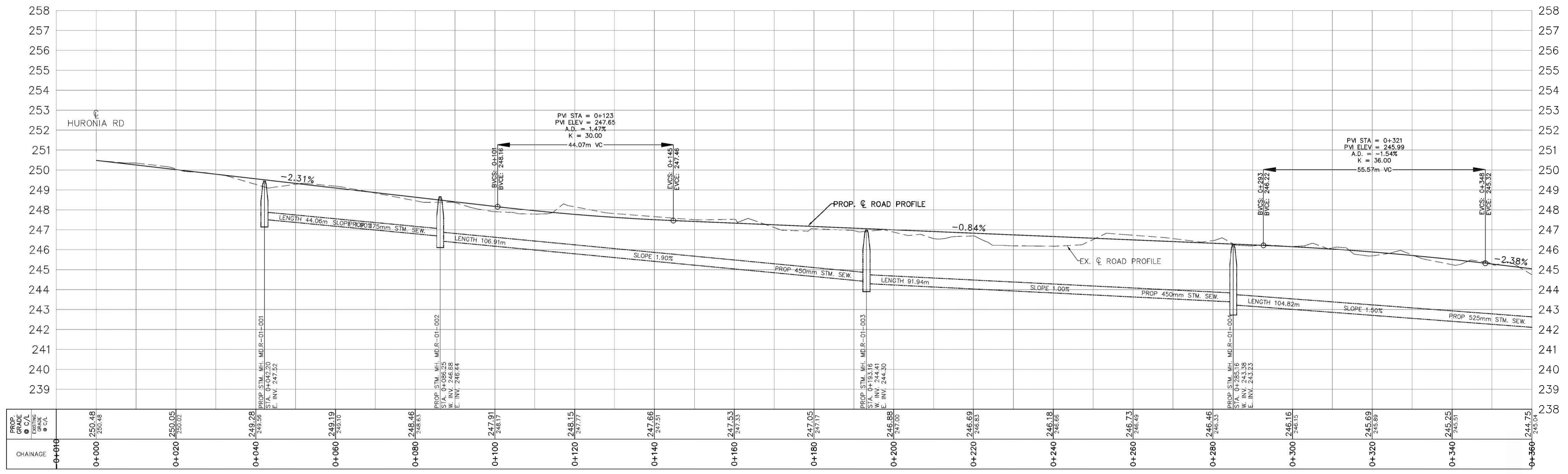
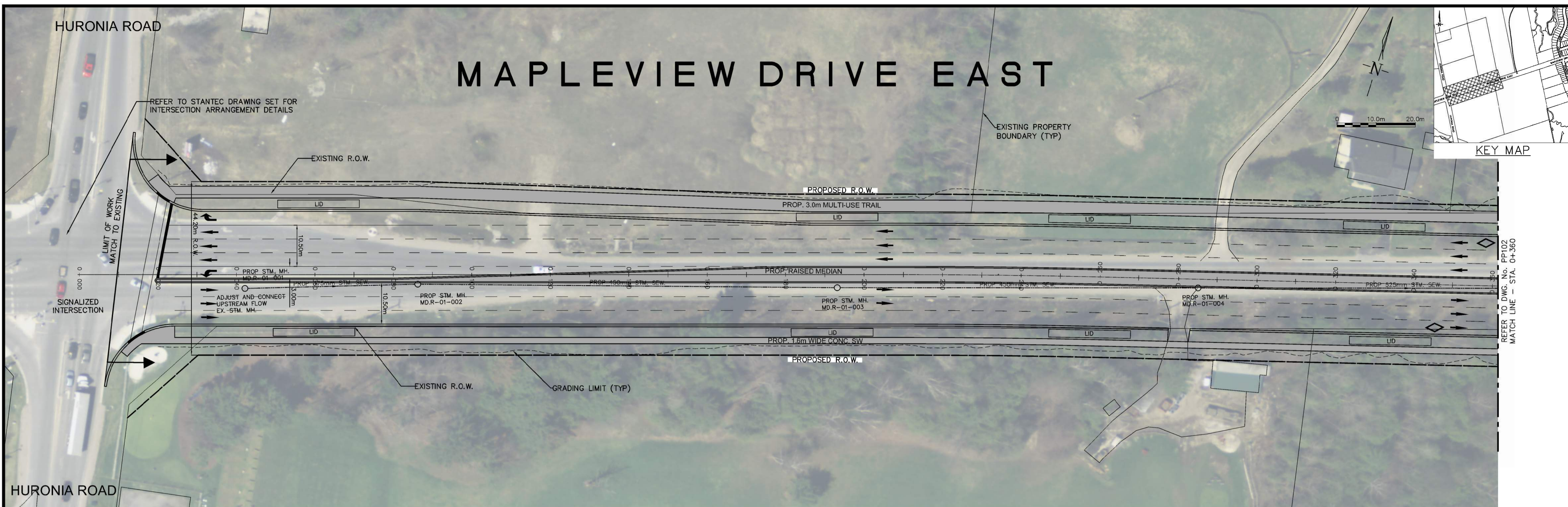
# **Appendix K**

## **Preferred Design Concepts**

# **Appendix K-1**

## **Mapleview Drive East**

# MAPLEVIEW DRIVE EAST



**GENERAL NOTES**  
REFER TO CURRENT CITY OF BARRIE STANDARDS FOR APPLICABLE GENERAL NOTES.



NO.	REVISIONS	DATE	APPROVED
A	ISSUED FOR INTERNAL REVIEW	17.03.01	R.S.
B	ISSUED FOR DRAFT SUBMISSION	17.05.24	R.S.
C	ISSUED FOR FINAL SUBMISSION	17.10.04	R.S.



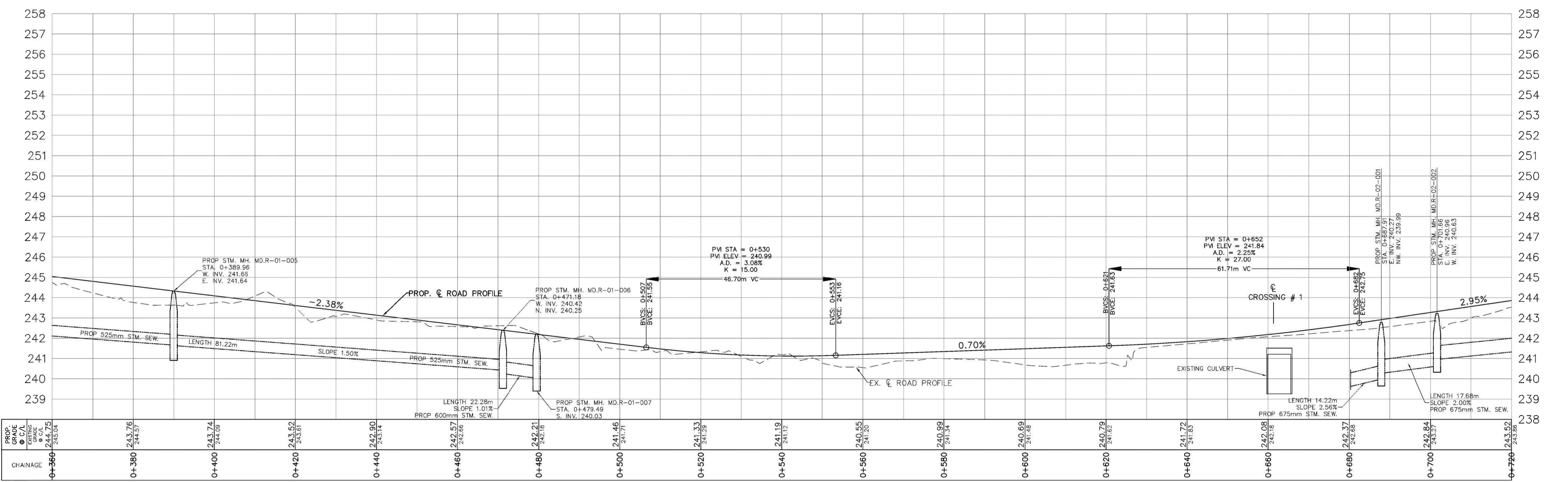
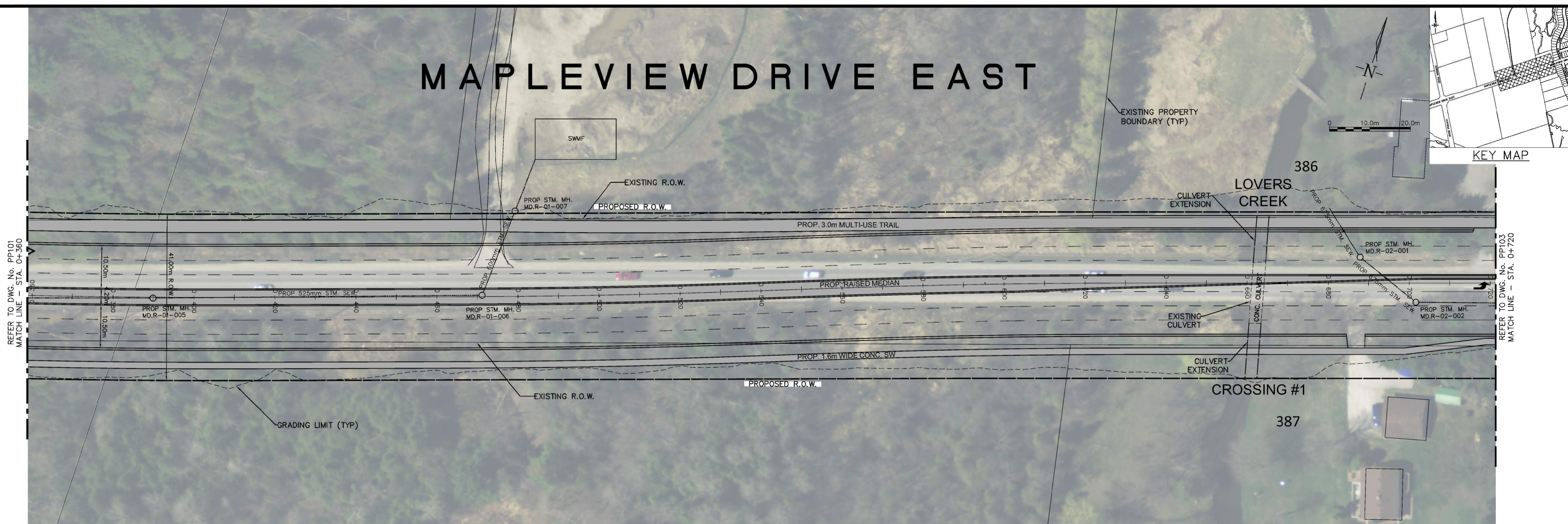
**CITY OF BARRIE APPROVED**  
DATE: .....  
DIRECTOR OF ENGINEERING

**MAPLEVIEW DRIVE EAST WIDENING**  
HURONIA ROAD TO 20TH SIDE ROAD  
PLAN & PROFILE  
STA. 0+000 TO STA. 0+360

**The City of BARRIE ENGINEERING DEPARTMENT**

SCALE HOR. 1:500	VERT. 1:100	CONTRACT NO. 2017-
DESIGN MSM	DRAWN MSM	SHEET NO. PP101
REVIEWED RS	DATE 17.02.14	

# MAPLEVIEW DRIVE EAST



**GENERAL NOTES**  
REFER TO CURRENT CITY OF BARRIE STANDARDS FOR APPLICABLE GENERAL NOTES.



NO.	REVISIONS	DATE	APPROVED
A	ISSUED FOR INTERNAL REVIEW	17.03.01	R.S.
B	ISSUED FOR DRAFT SUBMISSION	17.05.24	R.S.
C	ISSUED FOR FINAL SUBMISSION	17.10.04	R.S.



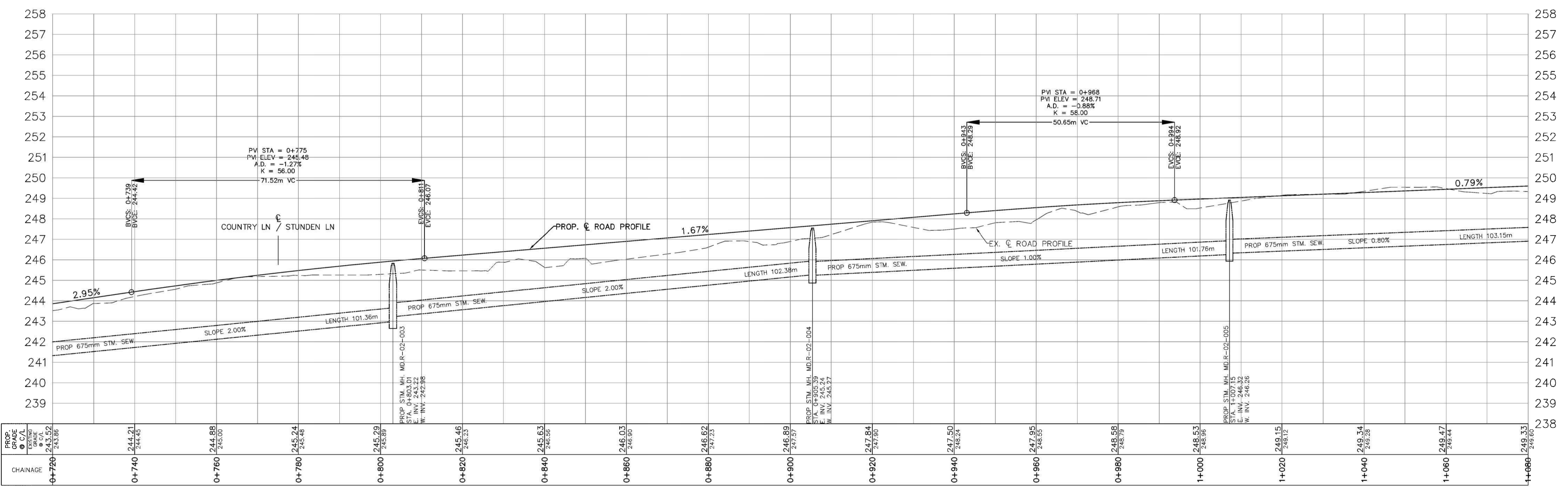
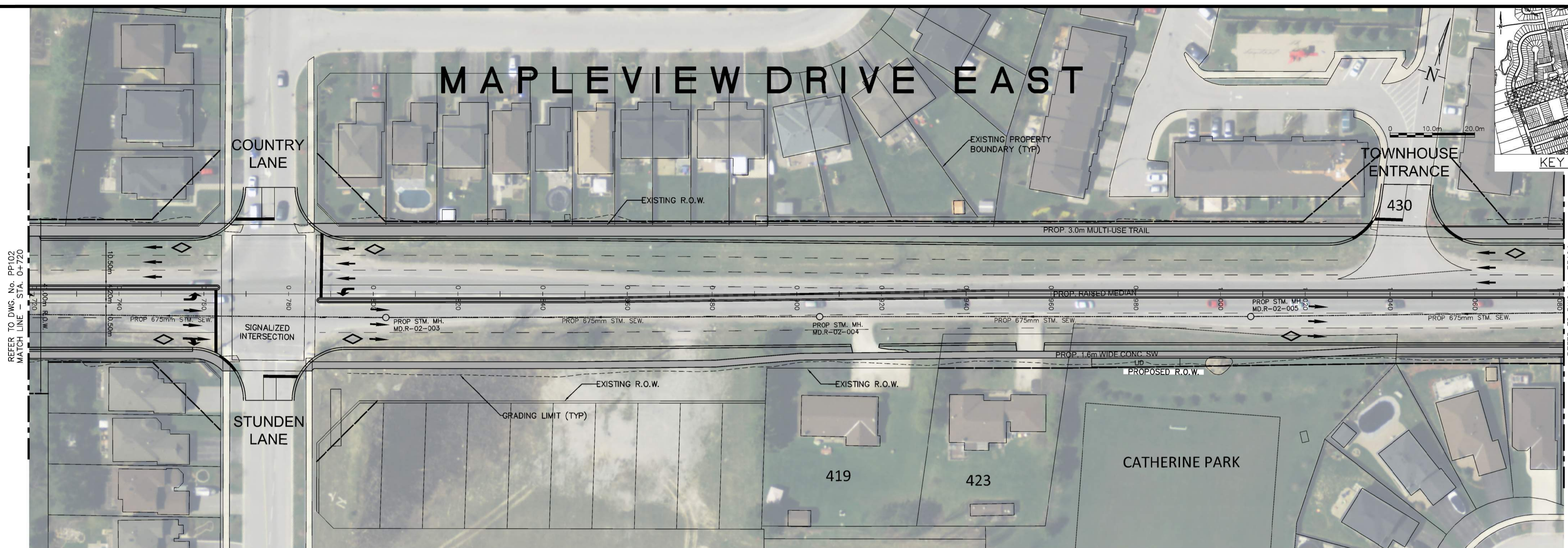
**CITY OF BARRIE APPROVED**  
DATE: .....  
DIRECTOR OF ENGINEERING

**MAPLEVIEW DRIVE EAST WIDENING**  
HURONIA ROAD TO 20TH SIDE ROAD  
PLAN & PROFILE  
STA. 0+0360 TO STA. 0+720

**The City of BARRIE ENGINEERING DEPARTMENT**

SCALE HOR. 1:500	VERT. 1:100	CONTRACT NO. 2017-
DESIGN MSM	DRAWN MSM	SHEET NO. PP102
REVIEWED RS	DATE 17.02.14	

# MAPLEVIEW DRIVE EAST



**GENERAL NOTES**  
 REFER TO CURRENT CITY OF BARRIE STANDARDS FOR APPLICABLE GENERAL NOTES.



NO.	REVISIONS	DATE	APPROVED
A	ISSUED FOR INTERNAL REVIEW	17.03.01	R.S.
B	ISSUED FOR DRAFT SUBMISSION	17.05.24	R.S.
C	ISSUED FOR FINAL SUBMISSION	17.10.04	R.S.



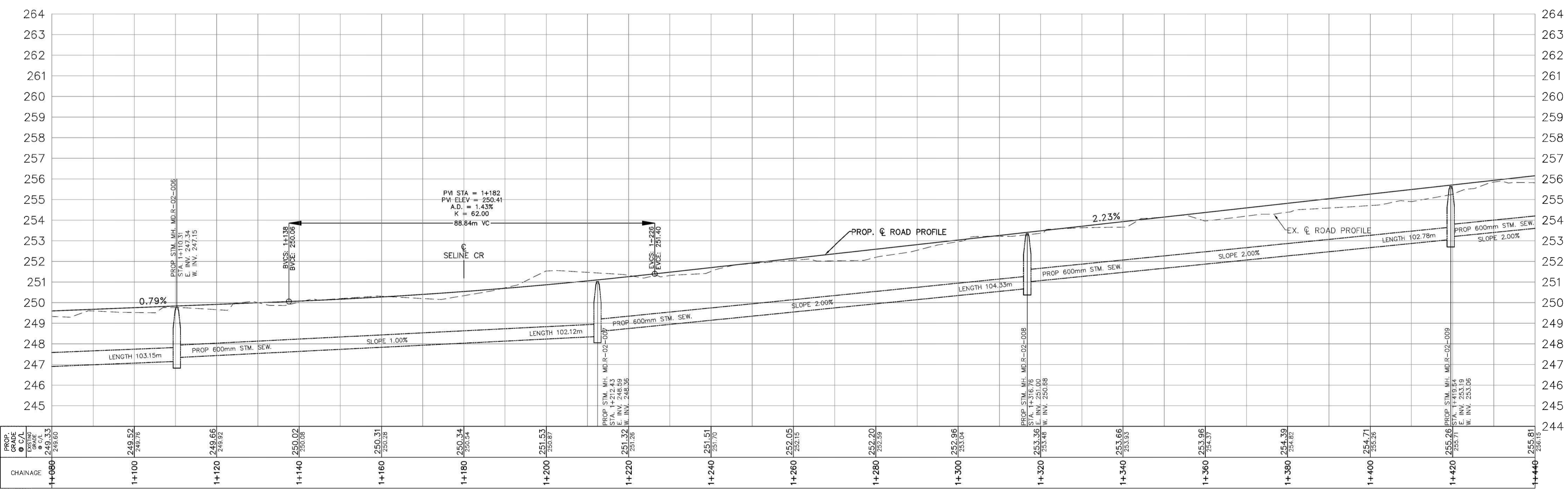
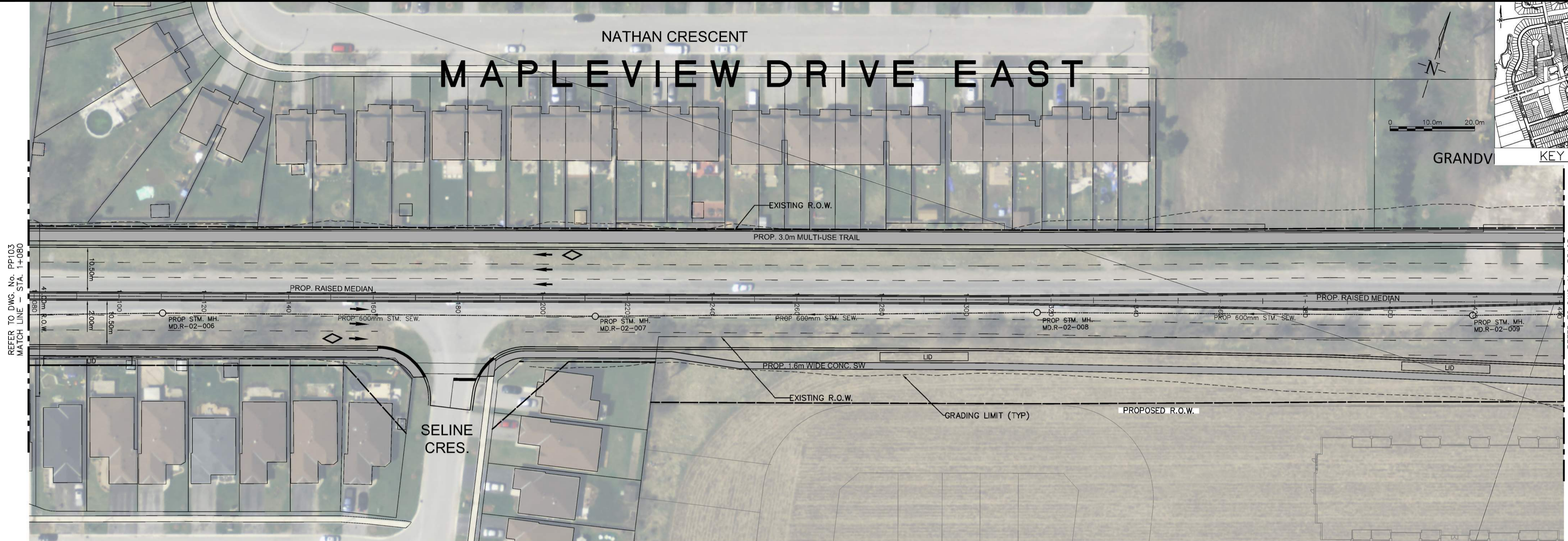
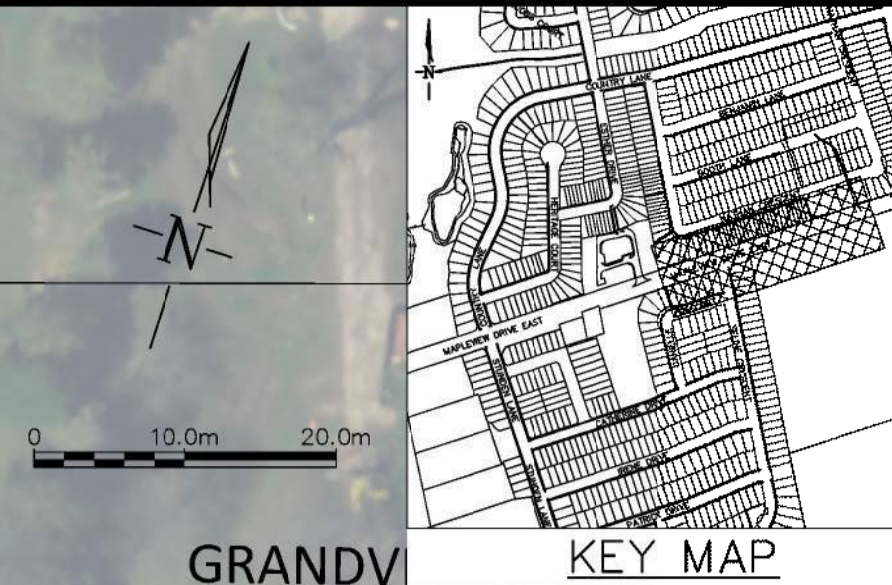
**CITY OF BARRIE APPROVED**  
 DATE: .....  
 DIRECTOR OF ENGINEERING

**MAPLEVIEW DRIVE EAST WIDENING**  
 HURONIA ROAD TO 20TH SIDE ROAD  
 PLAN & PROFILE  
 STA. 0+720 TO STA. 1+180

**The City of BARRIE ENGINEERING DEPARTMENT**

SCALE HOR. 1:500	VERT. 1:100	CONTRACT NO. 2017-
DESIGN MSM	DRAWN MSM	SHEET NO. PP103
REVIEWED RS	DATE 17.02.14	

# NATHAN CRESCENT MAPLEVIEW DRIVE EAST



**GENERAL NOTES**  
REFER TO CURRENT CITY OF BARRIE STANDARDS FOR APPLICABLE GENERAL NOTES.



NO.	REVISIONS	DATE	APPROVED
A	ISSUED FOR INTERNAL REVIEW	17.03.01	R.S.
B	ISSUED FOR DRAFT SUBMISSION	17.05.24	R.S.
C	ISSUED FOR FINAL SUBMISSION	17.10.04	R.S.



**CITY OF BARRIE APPROVED**  
DATE: .....  
DIRECTOR OF ENGINEERING

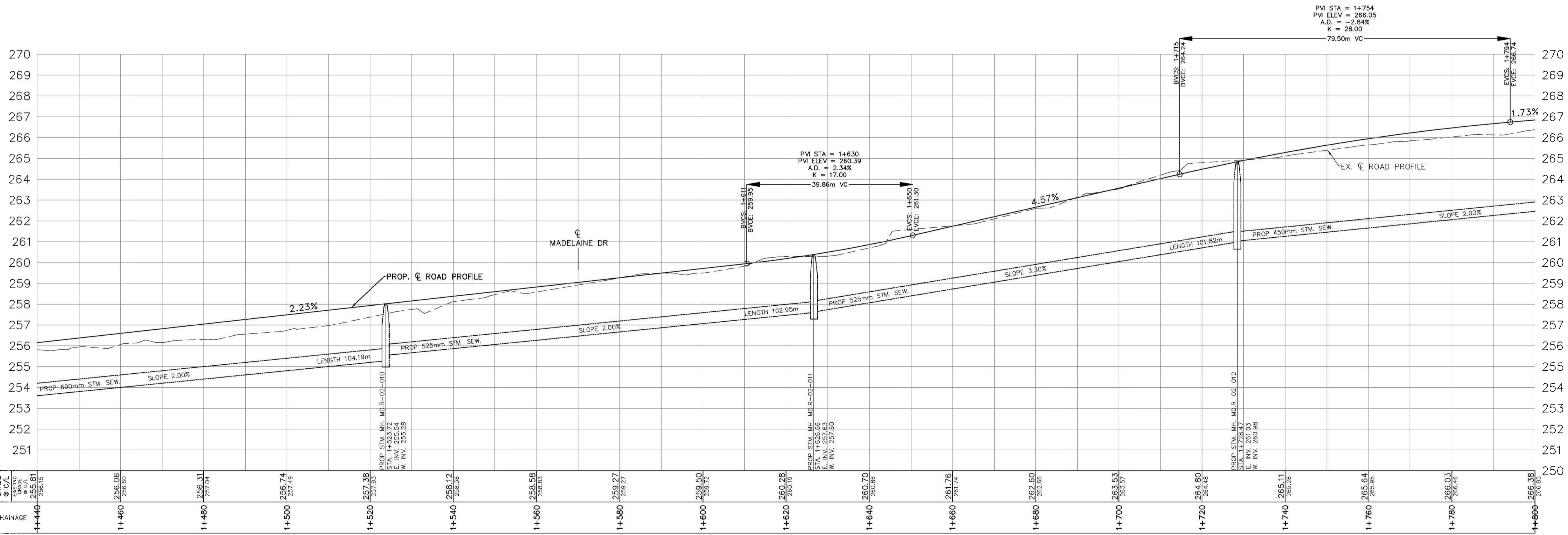
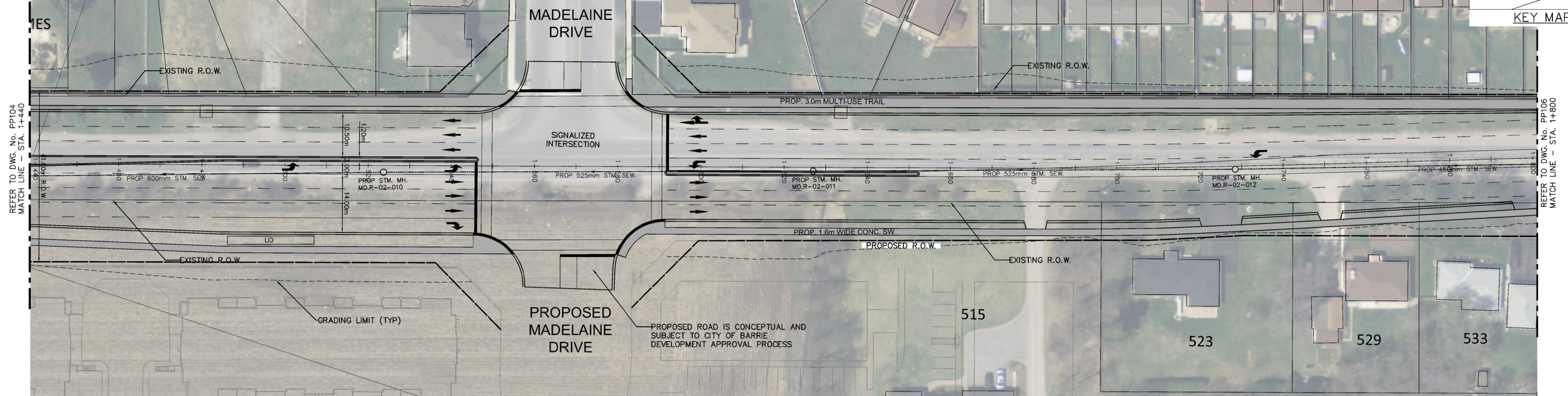
**MAPLEVIEW DRIVE EAST WIDENING**  
HURONIA ROAD TO 20TH SIDE ROAD  
PLAN & PROFILE  
STA. 1+180 TO STA. 1+440

**The City of BARRIE ENGINEERING DEPARTMENT**

SCALE HOR. 1:500	VERT. 1:100	CONTRACT NO. 2017-
DESIGN MSM	DRAWN MSM	SHEET NO. PP104
REVIEWED RS	DATE 17.02.14	

# MAPLEVIEW DRIVE EAST

KEY MAP



GENERAL NOTES  
REFER TO CURRENT CITY OF BARRIE STANDARDS FOR APPLICABLE GENERAL NOTES.



NO.	REVISIONS	DATE	APPROVED
A	ISSUED FOR INTERNAL REVIEW	17.03.01	R.S.
B	ISSUED FOR DRAFT SUBMISSION	17.05.24	R.S.
C	ISSUED FOR FINAL SUBMISSION	17.10.04	R.S.



CITY OF BARRIE  
**APPROVED**  
DATE: .....  
DIRECTOR OF ENGINEERING

**MAPLEVIEW DRIVE EAST  
WIDENING**  
HURONIA ROAD TO 20TH SIDE ROAD  
PLAN & PROFILE  
STA. 1+440 TO STA. 1+800

The City of **BARRIE**  
ENGINEERING DEPARTMENT

SCALE HOR. 1:500 VERT. 1:100  
DESIGN MSM DRAWN MSM  
REVIEWED RS DATE 17.02.14

CONTRACT NO. 2017-  
SHEET NO. **PP105**

# MAPLEVIEW DRIVE EAST

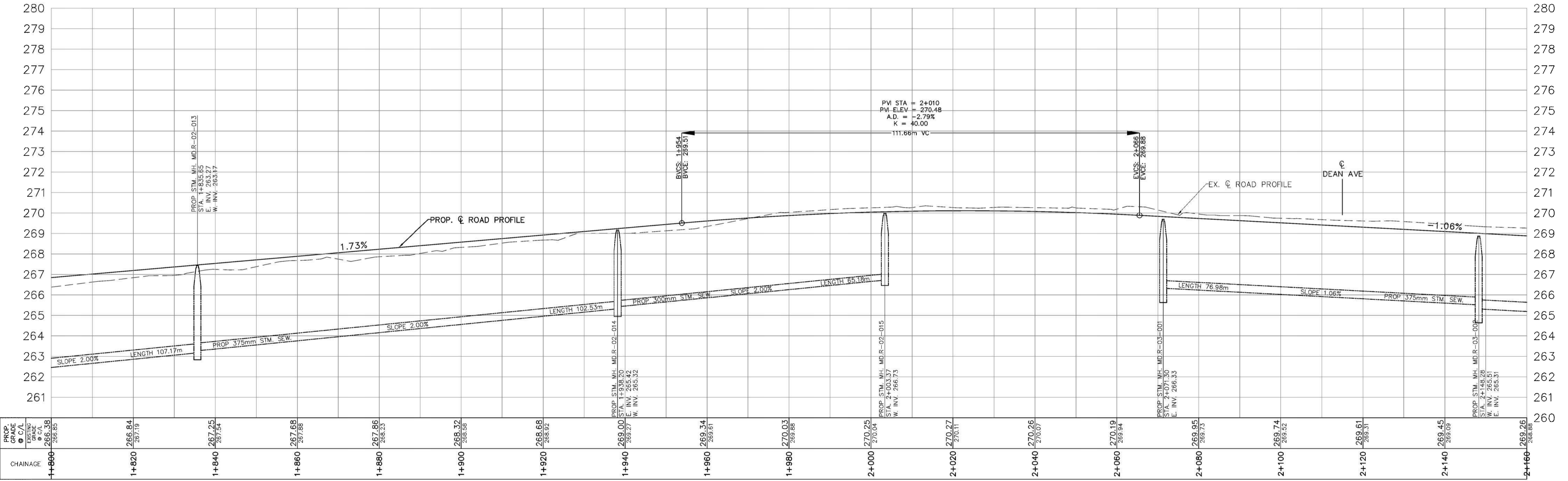
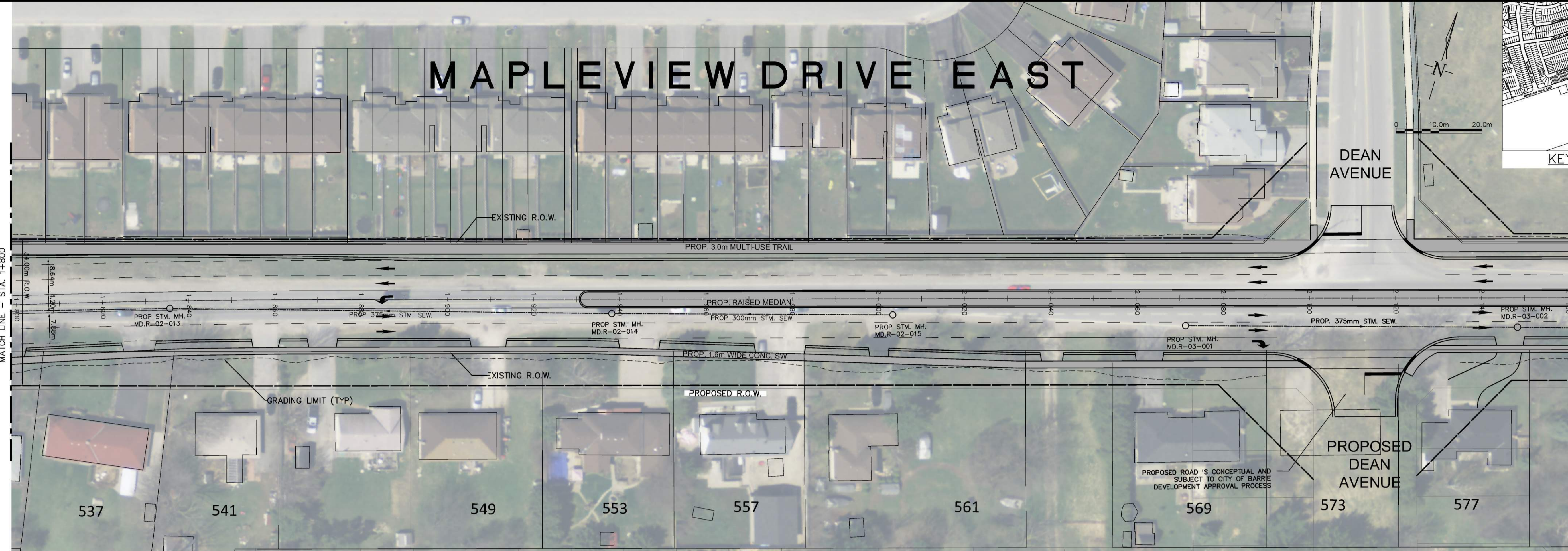
DEAN AVENUE

KEY MAP

0 10.0m 20.0m

REFER TO DWG. No. PP105  
MATCH LINE - STA. 1+800

REFER TO DWG. No. PP107  
MATCH LINE - STA. 2+160



GENERAL NOTES  
REFER TO CURRENT CITY OF BARRIE STANDARDS FOR APPLICABLE GENERAL NOTES.



NO.	REVISIONS	DATE	APPROVED
A	ISSUED FOR INTERNAL REVIEW	17.03.01	R.S.
B	ISSUED FOR DRAFT SUBMISSION	17.05.24	R.S.
C	ISSUED FOR FINAL SUBMISSION	17.10.04	R.S.



CITY OF BARRIE  
APPROVED  
DATE: .....  
DIRECTOR OF ENGINEERING

MAPLEVIEW DRIVE EAST  
WIDENING  
HURONIA ROAD TO 20TH SIDE ROAD  
PLAN & PROFILE  
STA. 1+800 TO STA. 2+160

The City of BARRIE  
ENGINEERING DEPARTMENT

SCALE HOR. 1:500 VERT. 1:100  
DESIGN MSM DRAWN MSM  
REVIEWED RS DATE 17.02.14

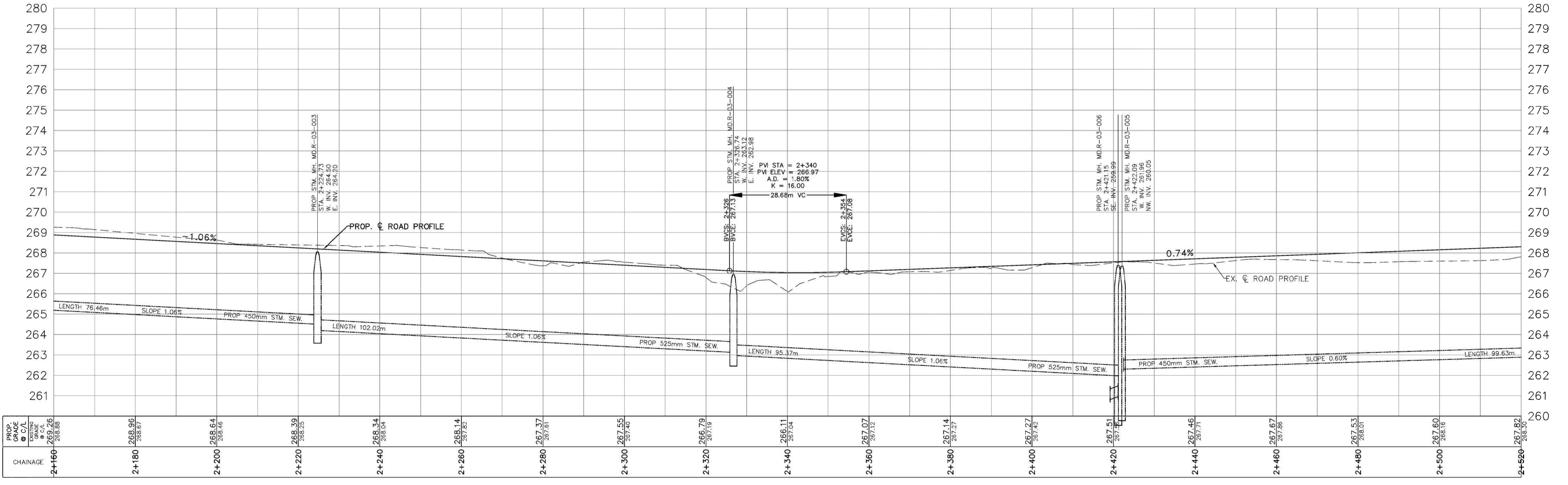
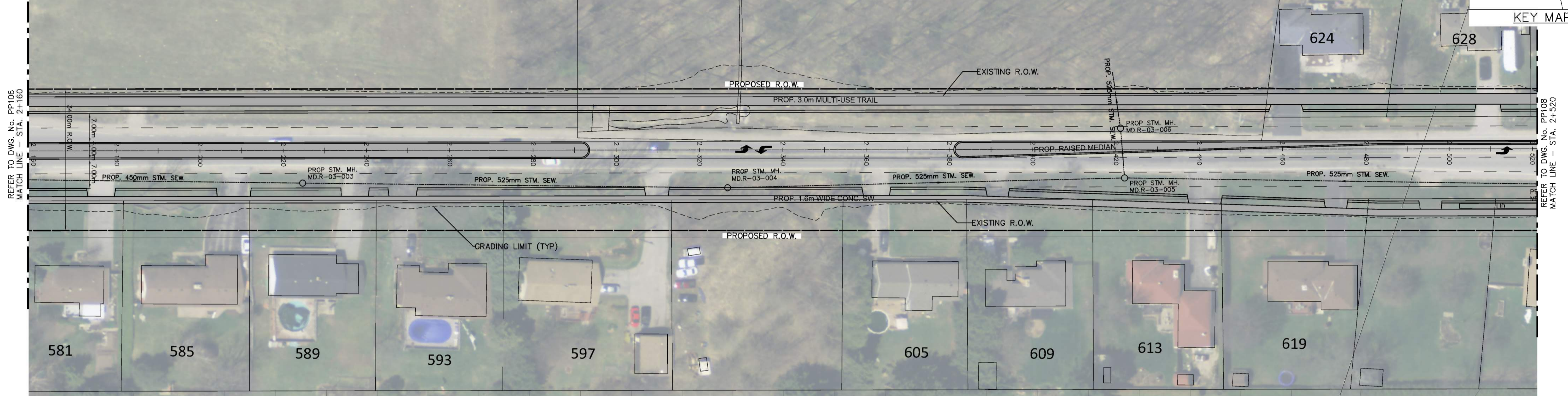
CONTRACT NO. 2017-  
SHEET NO. PP106



# MAPLEVIEW DRIVE EAST

KEY MAP

0 10.0m 20.0m



**GENERAL NOTES**  
REFER TO CURRENT CITY OF BARRIE STANDARDS FOR APPLICABLE GENERAL NOTES.



NO.	REVISIONS	DATE	APPROVED
A	ISSUED FOR INTERNAL REVIEW	17.03.01	R.S.
B	ISSUED FOR DRAFT SUBMISSION	17.05.24	R.S.
C	ISSUED FOR FINAL SUBMISSION	17.10.04	R.S.



CITY OF BARRIE  
**APPROVED**  
DATE: .....  
DIRECTOR OF ENGINEERING

**MAPLEVIEW DRIVE EAST WIDENING**  
HURONIA ROAD TO 20TH SIDE ROAD  
PLAN & PROFILE  
STA. 2+160 TO STA. 2+520

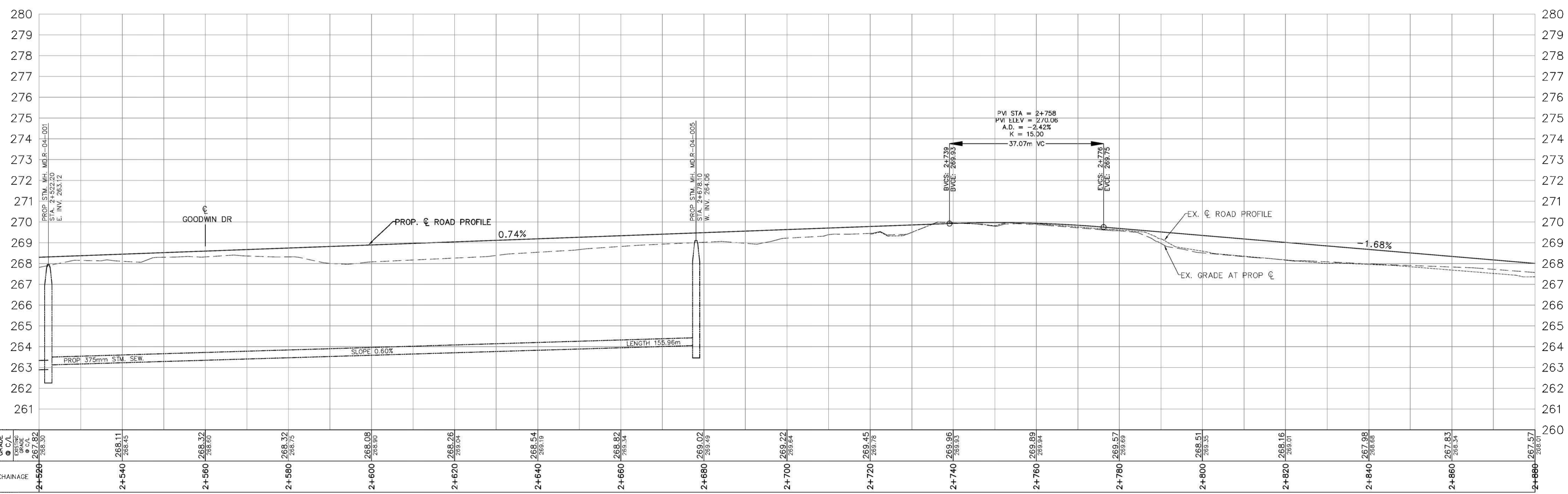
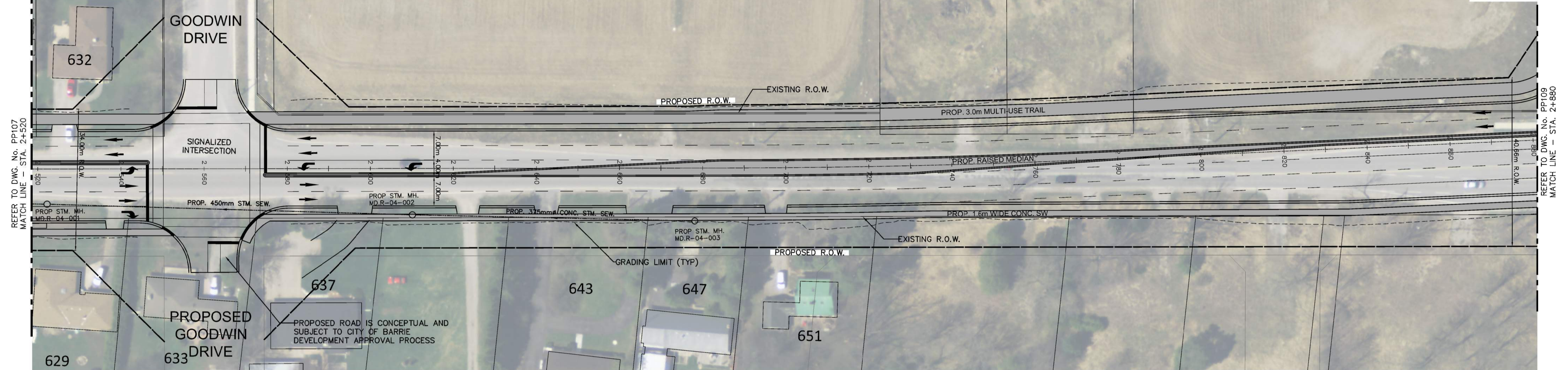
The City of **BARRIE**  
ENGINEERING DEPARTMENT

SCALE HOR. 1:500	VERT. 1:100	CONTRACT NO. 2017-
DESIGN MSM	DRAWN MSM	SHEET NO. PP107
REVIEWED RS	DATE 17.02.14	

# MAPLEVIEW DRIVE EAST

0 10.0m 20.0m

KEY MAP



**GENERAL NOTES**  
REFER TO CURRENT CITY OF BARRIE STANDARDS FOR APPLICABLE GENERAL NOTES.



NO.	REVISIONS	DATE	APPROVED
A	ISSUED FOR INTERNAL REVIEW	17.03.01	R.S.
B	ISSUED FOR DRAFT SUBMISSION	17.05.24	R.S.
C	ISSUED FOR FINAL SUBMISSION	17.10.04	R.S.



**CITY OF BARRIE APPROVED**  
DATE: .....  
DIRECTOR OF ENGINEERING

**MAPLEVIEW DRIVE EAST WIDENING**  
HURONIA ROAD TO 20TH SIDE ROAD  
PLAN & PROFILE  
STA. 2+520 TO STA. 2+880

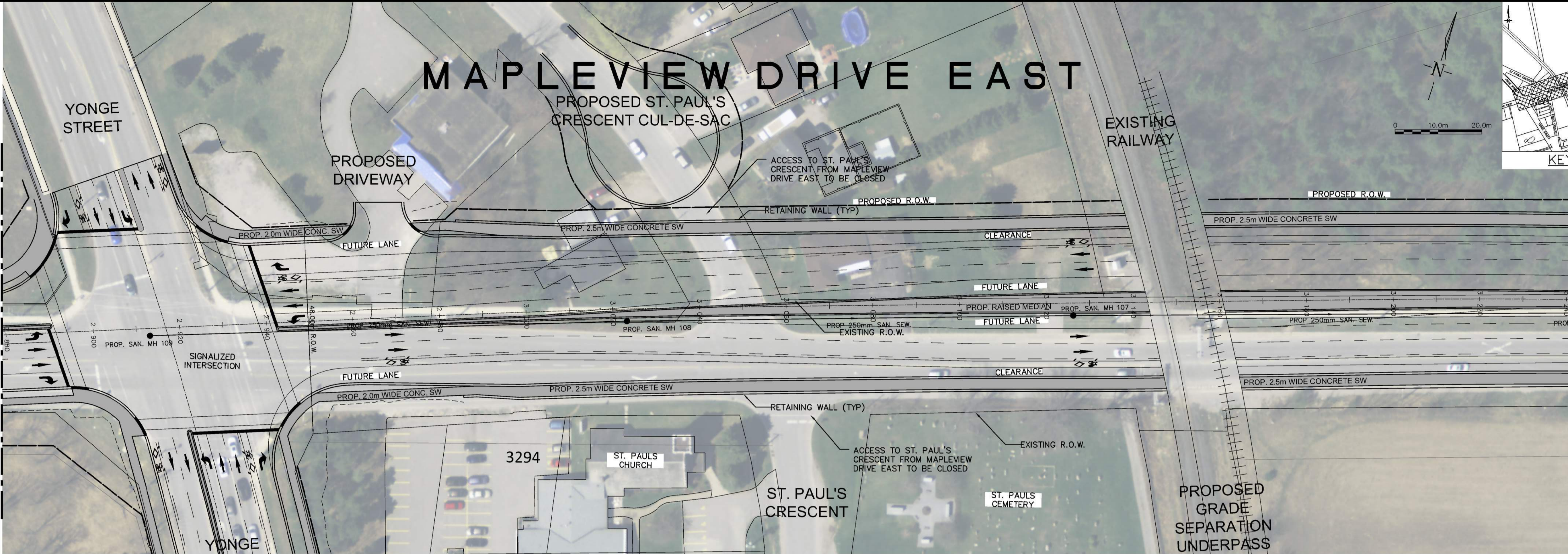
*The City of*  
**BARRIE**  
ENGINEERING DEPARTMENT

SCALE HOR. 1:500 VERT. 1:100  
DESIGN MSM DRAWN MSM  
REVIEWED RS DATE 17.02.14

CONTRACT NO. 2017-  
SHEET NO. PP108

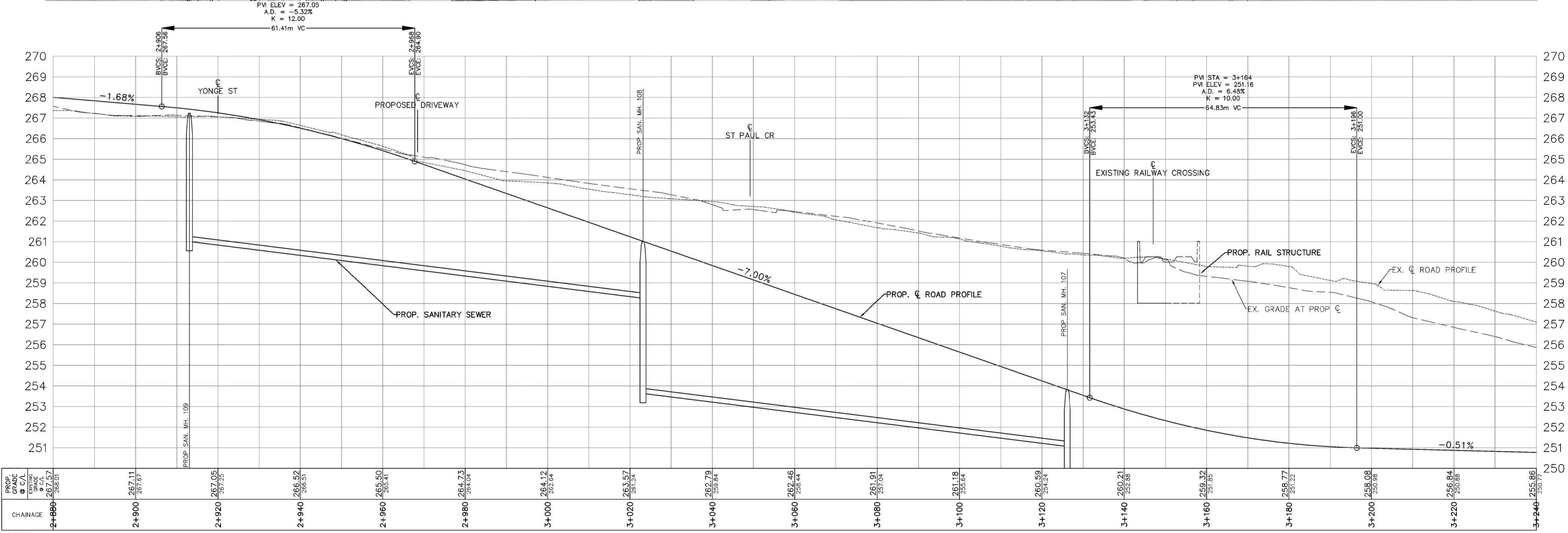
# MAPLEVIEW DRIVE EAST

PROPOSED ST. PAUL'S CRESCENT CUL-DE-SAC



REFER TO DWG. No. PP108  
MATCH LINE - STA. 2+880

REFER TO DWG. No. PP110  
MATCH LINE - STA. 3+240



GENERAL NOTES  
REFER TO CURRENT CITY OF BARRIE STANDARDS FOR APPLICABLE GENERAL NOTES.



NO.	REVISIONS	DATE	APPROVED
A	ISSUED FOR INTERNAL REVIEW	17.03.01	R.S.
B	ISSUED FOR DRAFT SUBMISSION	17.05.24	R.S.
C	ISSUED FOR FINAL SUBMISSION	17.10.04	R.S.



CITY OF BARRIE  
**APPROVED**  
DATE: .....  
DIRECTOR OF ENGINEERING

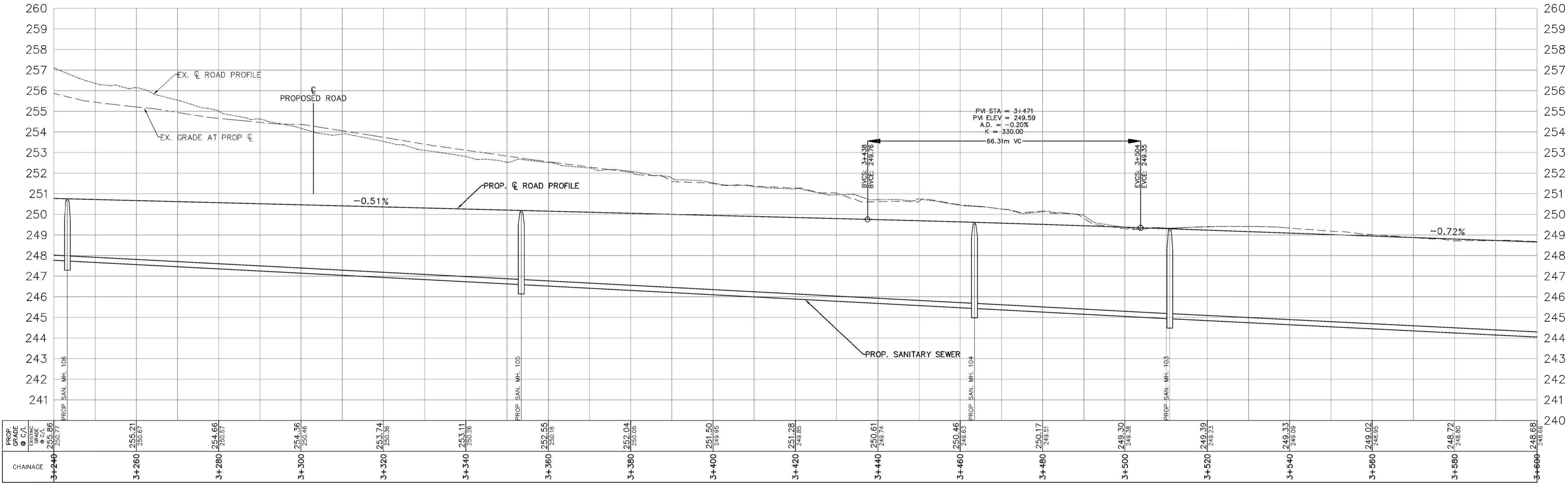
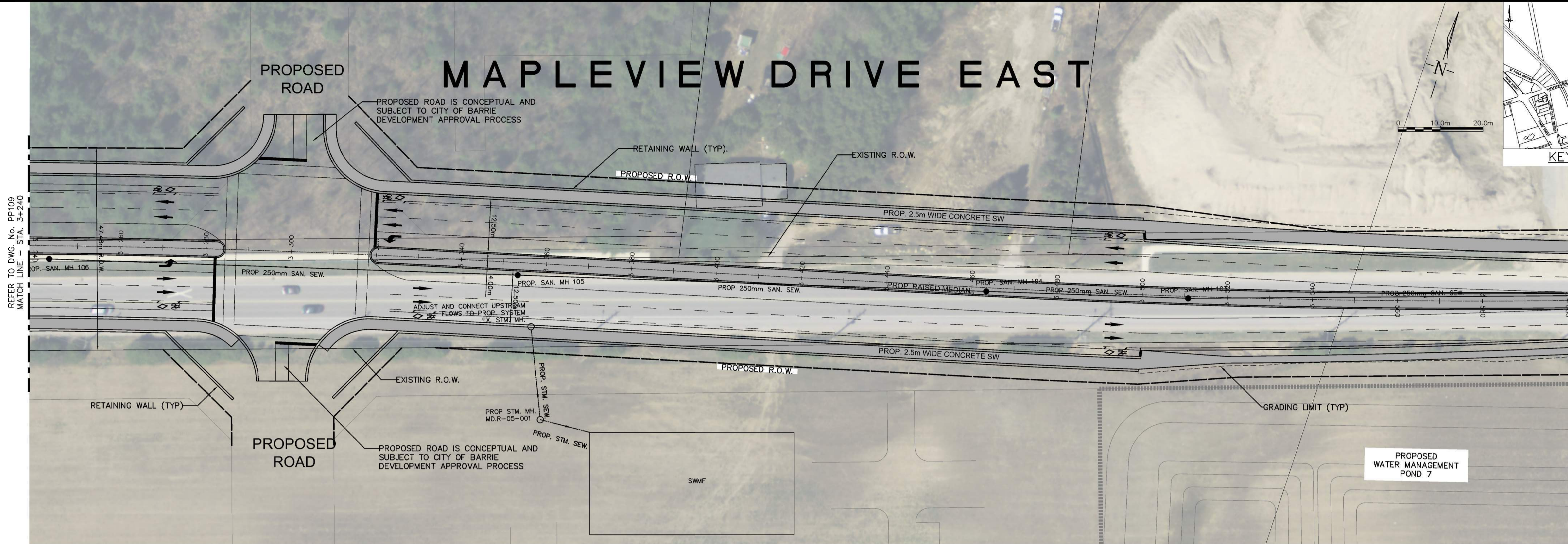
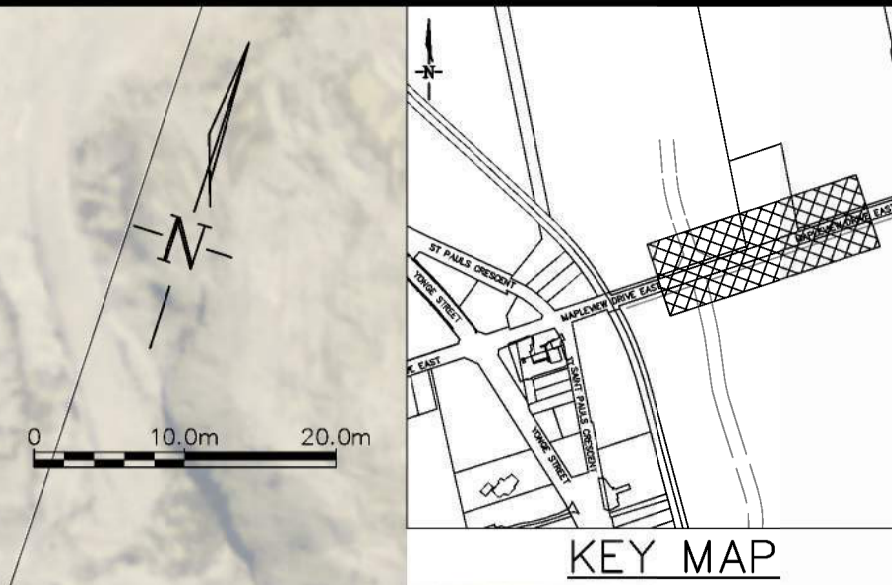
**MAPLEVIEW DRIVE EAST  
WIDENING**  
HURONIA ROAD TO 20TH SIDE ROAD  
PLAN & PROFILE  
STA. 2+880 TO STA. 3+240

The City of **BARRIE**  
ENGINEERING DEPARTMENT

SCALE HOR. 1:500 VERT. 1:100  
DESIGN MSM DRAWN MSM  
REVIEWED RS DATE 17.02.14

CONTRACT NO. 2017-  
SHEET NO. PP109

# MAPLEVIEW DRIVE EAST



GENERAL NOTES  
REFER TO CURRENT CITY OF BARRIE STANDARDS FOR APPLICABLE GENERAL NOTES.



NO.	REVISIONS	DATE	APPROVED
A	ISSUED FOR INTERNAL REVIEW	17.03.01	R.S.
B	ISSUED FOR DRAFT SUBMISSION	17.05.24	R.S.
C	ISSUED FOR FINAL SUBMISSION	17.10.04	R.S.



CITY OF BARRIE  
**APPROVED**  
DATE: .....  
DIRECTOR OF ENGINEERING

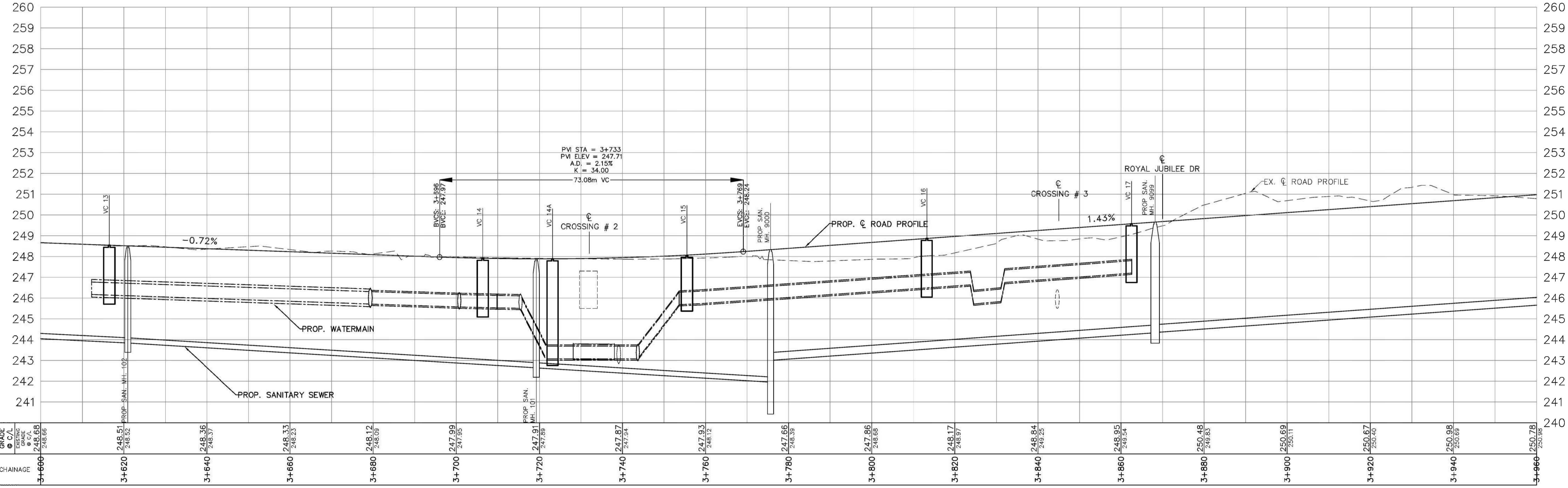
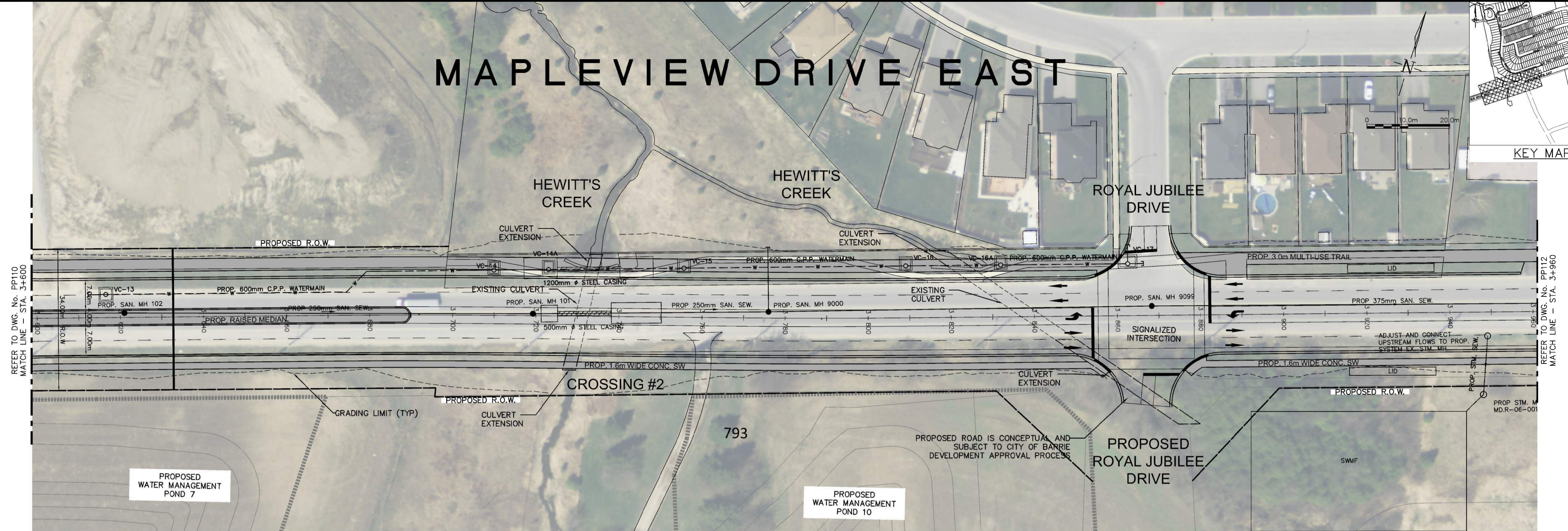
**MAPLEVIEW DRIVE EAST**  
**WIDENING**  
HURONIA ROAD TO 20TH SIDE ROAD  
PLAN & PROFILE  
STA. 3+240 TO STA. 3+600

The City of **BARRIE**  
ENGINEERING DEPARTMENT

SCALE HOR. 1:500	VERT. 1:100	CONTRACT NO. 2017-
DESIGN MSM	DRAWN MSM	SHEET NO. PP110
REVIEWED RS	DATE 17.02.14	

# MAPLEVIEW DRIVE EAST

KEY MAP



GENERAL NOTES  
REFER TO CURRENT CITY OF BARRIE STANDARDS FOR APPLICABLE GENERAL NOTES.



NO.	REVISIONS	DATE	APPROVED
A	ISSUED FOR INTERNAL REVIEW	17.03.01	R.S.
B	ISSUED FOR DRAFT SUBMISSION	17.05.24	R.S.
C	ISSUED FOR FINAL SUBMISSION	17.10.04	R.S.

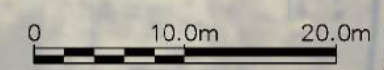


CITY OF BARRIE APPROVED  
DATE: .....  
DIRECTOR OF ENGINEERING

MAPLEVIEW DRIVE EAST WIDENING  
HURONIA ROAD TO 20TH SIDE ROAD  
PLAN & PROFILE  
STA. 3+600 TO STA. 3+960

The City of BARRIE ENGINEERING DEPARTMENT  
SCALE HOR. 1:500 VERT. 1:100  
DESIGN MSM DRAWN MSM  
REVIEWED RS DATE 17.02.14  
CONTRACT NO. 2017- SHEET NO. PP111

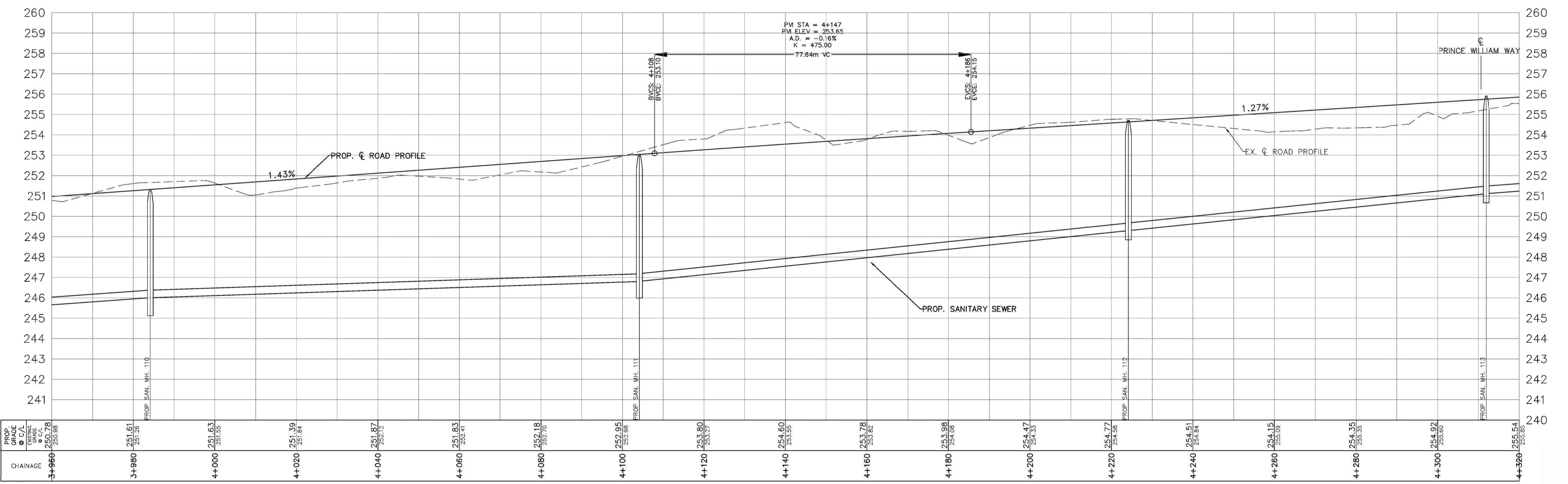
# MAPLEVIEW DRIVE EAST



KEY MAP

PRINCE WILLIAM WAY

PROPOSED PRINCE WILLIAM WAY



CHAINAGE	PROP. GRADE	EXISTING GRADE	C/A	ELEVATION
3+960	250.78	250.98		
3+980	251.61	251.26		
4+000	251.63	251.58		
4+020	251.39	251.84		
4+040	251.87	252.12		
4+060	251.83	252.41		
4+080	252.18	252.70		
4+100	252.95	252.98		
4+120	253.80	253.27		
4+140	254.60	253.55		
4+160	253.78	253.82		
4+180	253.98	254.08		
4+200	254.47	254.33		
4+220	254.77	254.58		
4+240	254.51	254.64		
4+260	254.15	254.09		
4+280	254.35	253.35		
4+300	254.92	254.60		
4+320	255.54	255.85		

GENERAL NOTES  
REFER TO CURRENT CITY OF BARRIE STANDARDS FOR APPLICABLE GENERAL NOTES.



NO.	REVISIONS	DATE	APPROVED
A	ISSUED FOR INTERNAL REVIEW	17.03.01	R.S.
B	ISSUED FOR DRAFT SUBMISSION	17.05.24	R.S.
C	ISSUED FOR FINAL SUBMISSION	17.10.04	R.S.



CITY OF BARRIE  
**APPROVED**  
DATE: .....  
DIRECTOR OF ENGINEERING

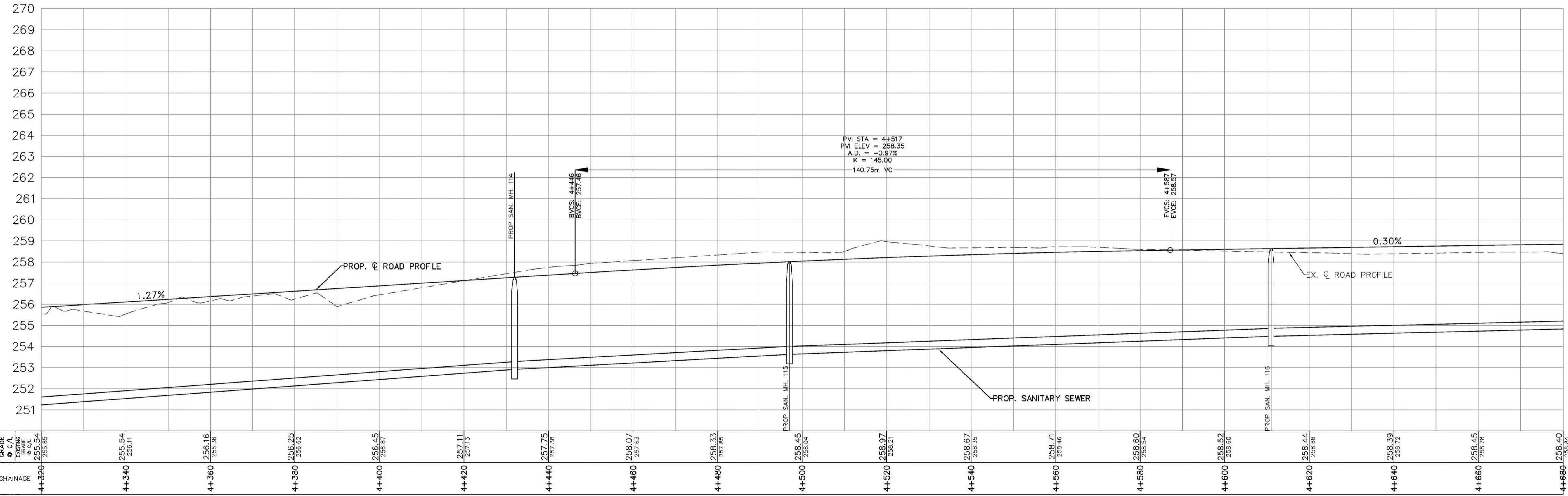
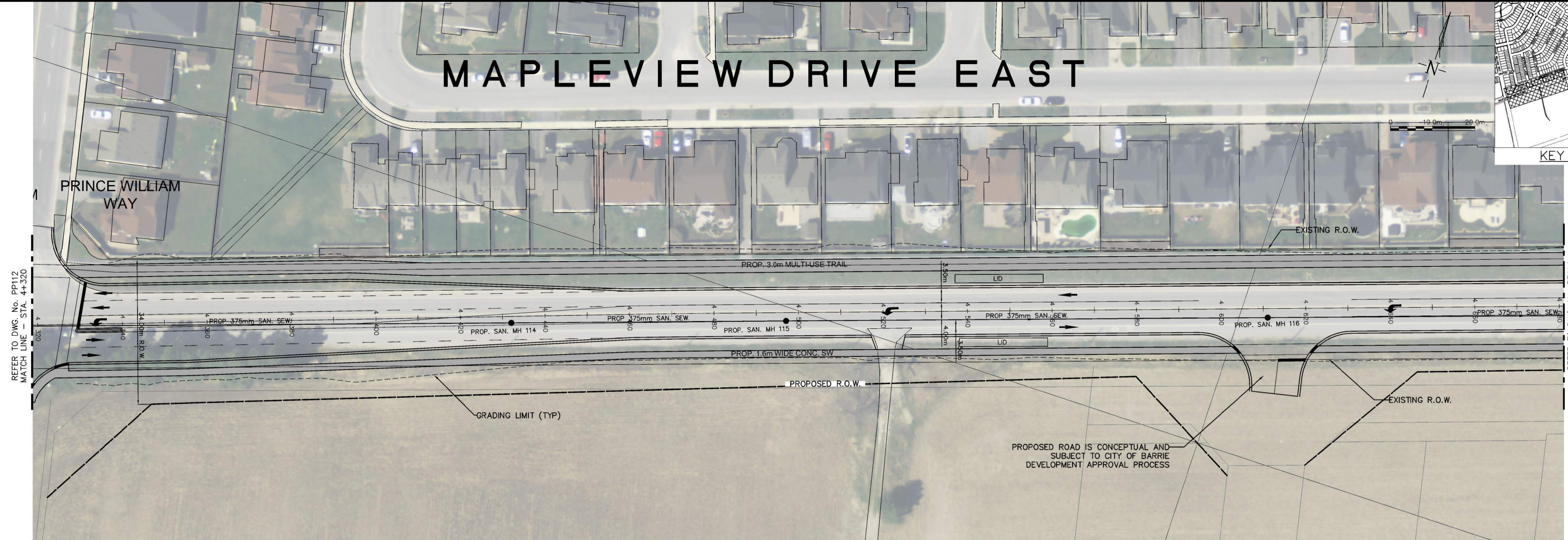
**MAPLEVIEW DRIVE EAST WIDENING**  
HURONIA ROAD TO 20TH SIDE ROAD  
PLAN & PROFILE  
STA. 3+960 TO STA. 4+320

The City of **BARRIE**  
ENGINEERING DEPARTMENT

SCALE HOR. 1:500	VERT. 1:100	CONTRACT NO. 2017-
DESIGN MSM	DRAWN MSM	SHEET NO. PP112
REVIEWED RS	DATE 17.02.14	

# MAPLEVIEW DRIVE EAST

KEY MAP



**GENERAL NOTES**  
REFER TO CURRENT CITY OF BARRIE STANDARDS FOR APPLICABLE GENERAL NOTES.



NO.	REVISIONS	DATE	APPROVED
A	ISSUED FOR INTERNAL REVIEW	17.03.01	R.S.
B	ISSUED FOR DRAFT SUBMISSION	17.05.24	R.S.
C	ISSUED FOR FINAL SUBMISSION	17.10.04	R.S.



CITY OF BARRIE  
**APPROVED**  
DATE: .....  
DIRECTOR OF ENGINEERING

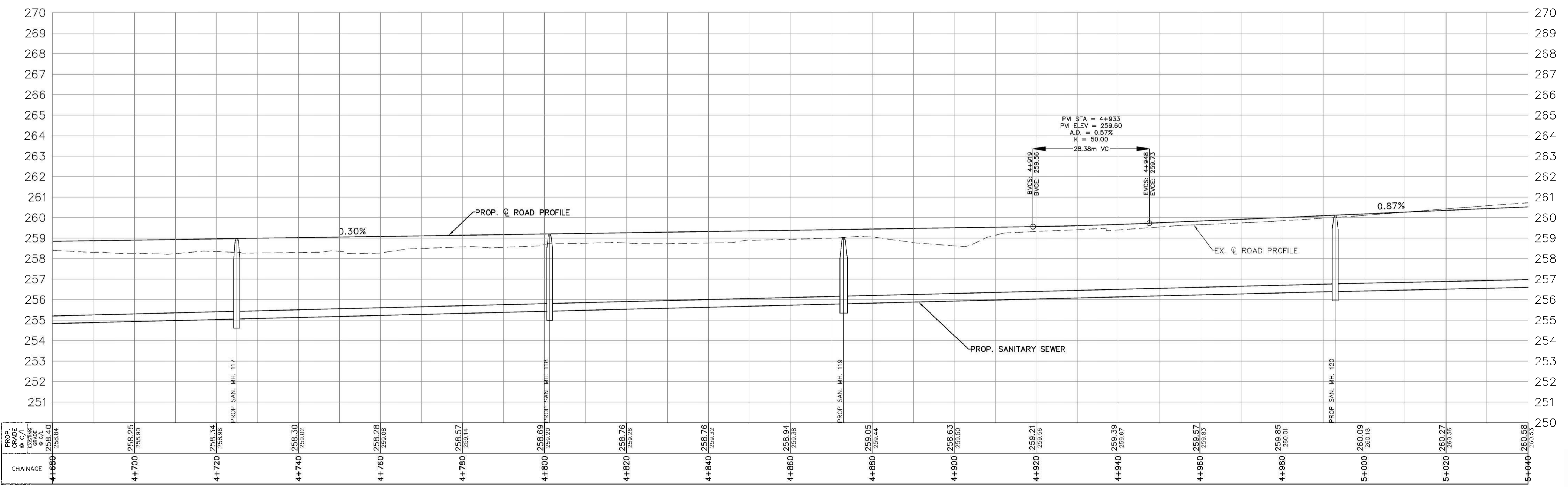
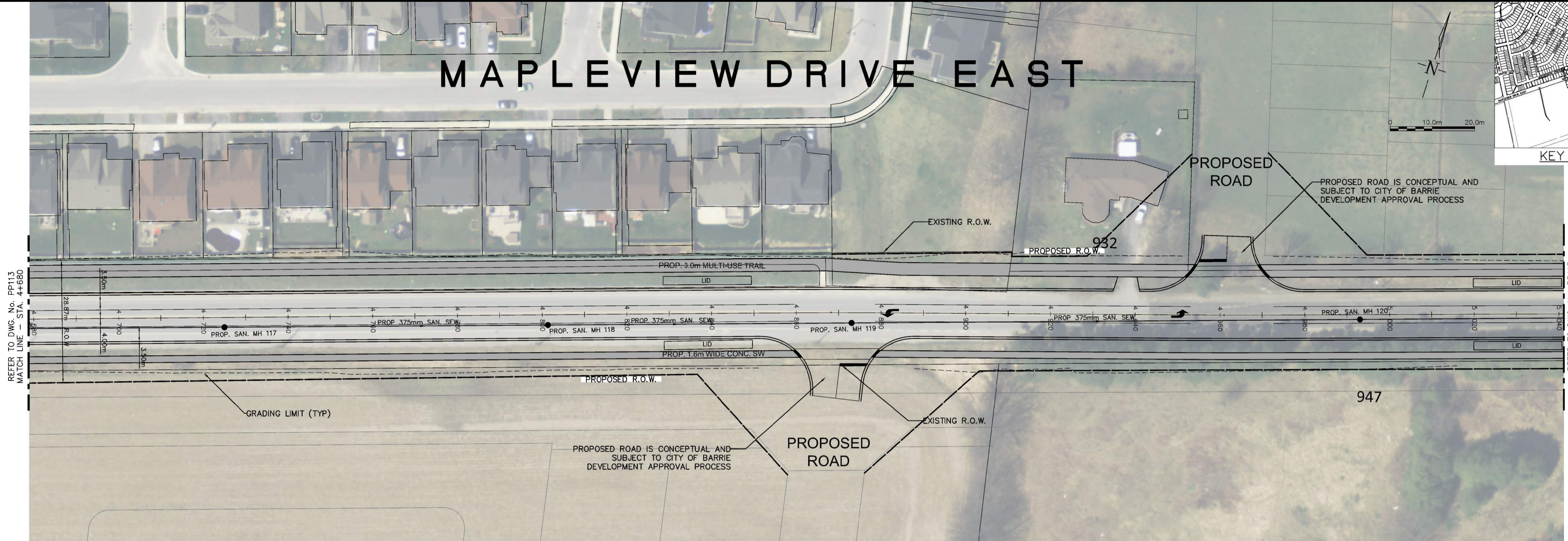
**MAPLEVIEW DRIVE EAST  
WIDENING**  
HURONIA ROAD TO 20TH SIDE ROAD  
PLAN & PROFILE  
STA. 4+320 TO STA. 4+680

The City of  
**BARRIE**  
ENGINEERING DEPARTMENT

SCALE HOR. 1:500 VERT. 1:100  
DESIGN MSM DRAWN MSM  
REVIEWED RS DATE 17.02.14

CONTRACT NO. 2017-  
SHEET NO. **PP113**

# MAPLEVIEW DRIVE EAST



**GENERAL NOTES**  
REFER TO CURRENT CITY OF BARRIE STANDARDS FOR APPLICABLE GENERAL NOTES.



NO.	REVISIONS	DATE	APPROVED
A	ISSUED FOR INTERNAL REVIEW	17.03.01	R.S.
B	ISSUED FOR DRAFT SUBMISSION	17.05.24	R.S.
C	ISSUED FOR FINAL SUBMISSION	17.10.04	R.S.



**CITY OF BARRIE APPROVED**  
DATE: .....  
DIRECTOR OF ENGINEERING

**MAPLEVIEW DRIVE EAST WIDENING**  
HURONIA ROAD TO 20TH SIDE ROAD  
PLAN & PROFILE  
STA. 4+680 TO STA. 5+040

**The City of BARRIE ENGINEERING DEPARTMENT**

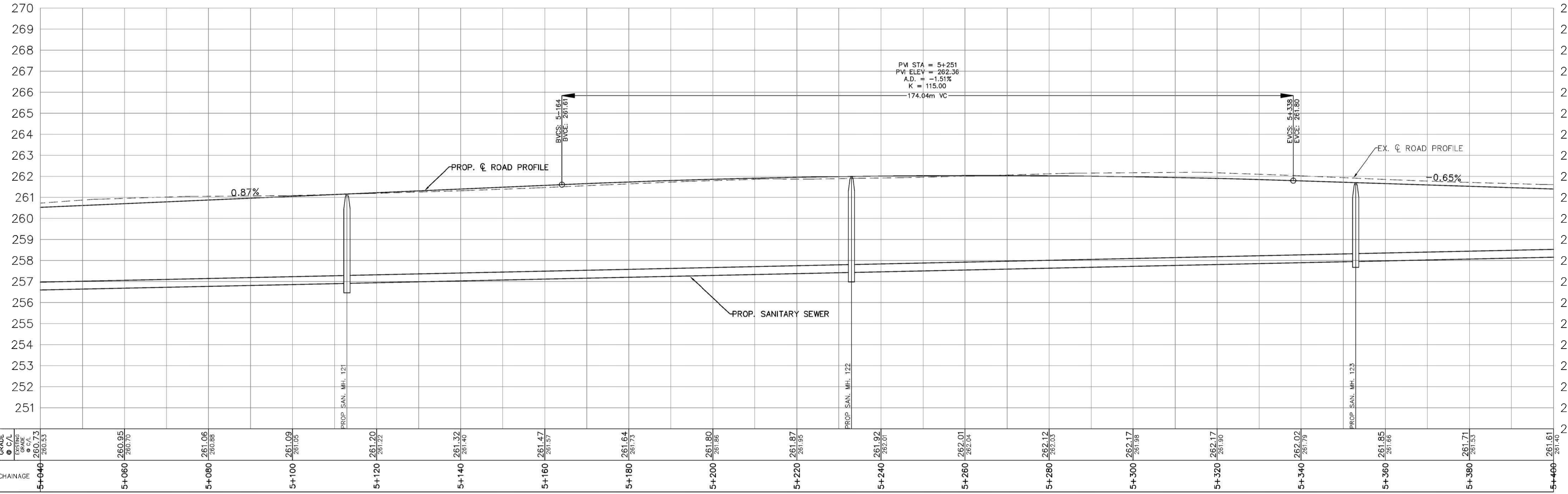
SCALE HOR. 1:500	VERT. 1:100	CONTRACT NO. 2017-
DESIGN MSM	DRAWN MSM	SHEET NO. PP114
REVIEWED RS	DATE 17.02.14	



# MAPLEVIEW DRIVE EAST

0 10.0m 20.0m

KEY MAP



**GENERAL NOTES**  
REFER TO CURRENT CITY OF BARRIE STANDARDS FOR APPLICABLE GENERAL NOTES.



NO.	REVISIONS	DATE	APPROVED
A	ISSUED FOR INTERNAL REVIEW	17.03.01	R.S.
B	ISSUED FOR DRAFT SUBMISSION	17.05.24	R.S.
C	ISSUED FOR FINAL SUBMISSION	17.10.04	R.S.



CITY OF BARRIE  
**APPROVED**  
DATE: .....  
DIRECTOR OF ENGINEERING

**MAPLEVIEW DRIVE EAST  
WIDENING**  
HURONIA ROAD TO 20TH SIDE ROAD  
PLAN & PROFILE  
STA. 5+040 TO STA. 5+400

*The City of*  
**BARRIE**  
ENGINEERING DEPARTMENT

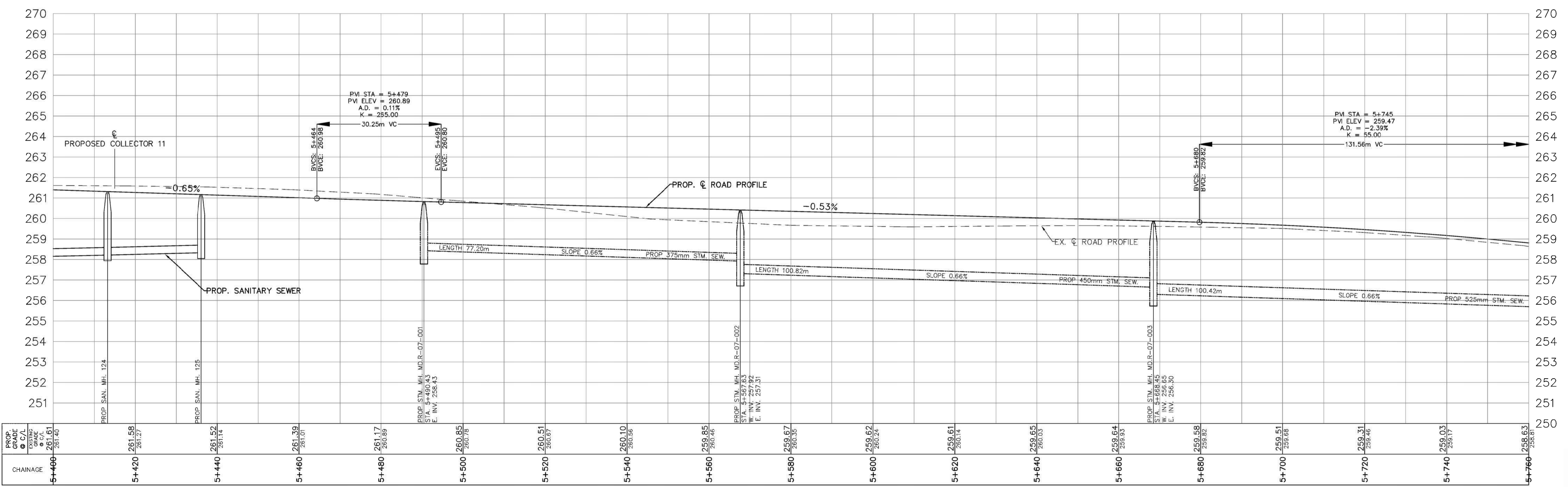
SCALE HOR. 1:500 VERT. 1:100  
DESIGN MSM DRAWN MSM  
REVIEWED RS DATE 17.02.14

CONTRACT NO. 2017-  
SHEET NO. **PP115**

# MAPLEVIEW DRIVE EAST

0 10.0m 20.0m

KEY MAP



GENERAL NOTES  
REFER TO CURRENT CITY OF BARRIE STANDARDS FOR APPLICABLE GENERAL NOTES.



NO.	REVISIONS	DATE	APPROVED
A	ISSUED FOR INTERNAL REVIEW	17.03.01	R.S.
B	ISSUED FOR DRAFT SUBMISSION	17.05.24	R.S.
C	ISSUED FOR FINAL SUBMISSION	17.10.04	R.S.



CITY OF BARRIE  
**APPROVED**  
DATE: .....  
DIRECTOR OF ENGINEERING

**MAPLEVIEW DRIVE EAST  
WIDENING**  
HURONIA ROAD TO 20TH SIDE ROAD  
PLAN & PROFILE  
STA. 5+400 TO STA. 5+760

The City of **BARRIE**  
ENGINEERING DEPARTMENT

SCALE HOR. 1:500 VERT. 1:100  
DESIGN MSM DRAWN MSM  
REVIEWED RS DATE 17.02.14

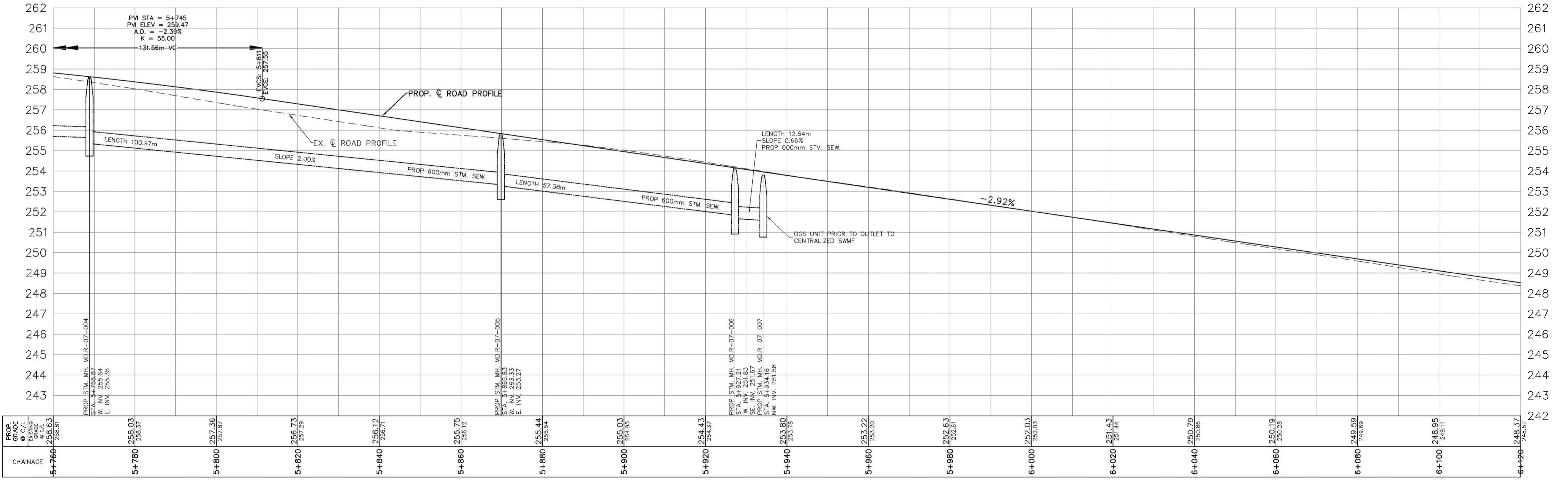
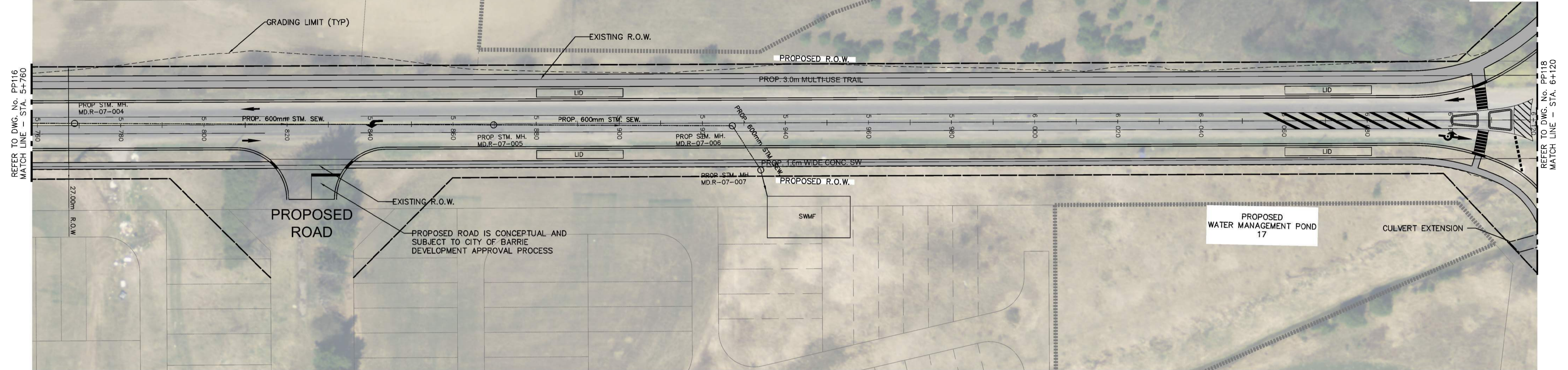
CONTRACT NO. 2017-  
SHEET NO. PP116

# MAPLEVIEW DRIVE EAST

PROPOSED WATER MANAGEMENT POND 14

0 10.0m 20.0m

KEY MAP



GENERAL NOTES  
REFER TO CURRENT CITY OF BARRIE STANDARDS FOR APPLICABLE GENERAL NOTES.



NO.	REVISIONS	DATE	APPROVED
A	ISSUED FOR INTERNAL REVIEW	17.03.01	R.S.
B	ISSUED FOR DRAFT SUBMISSION	17.05.24	R.S.
C	ISSUED FOR FINAL SUBMISSION	17.10.04	R.S.



CITY OF BARRIE APPROVED

DATE: .....

DIRECTOR OF ENGINEERING

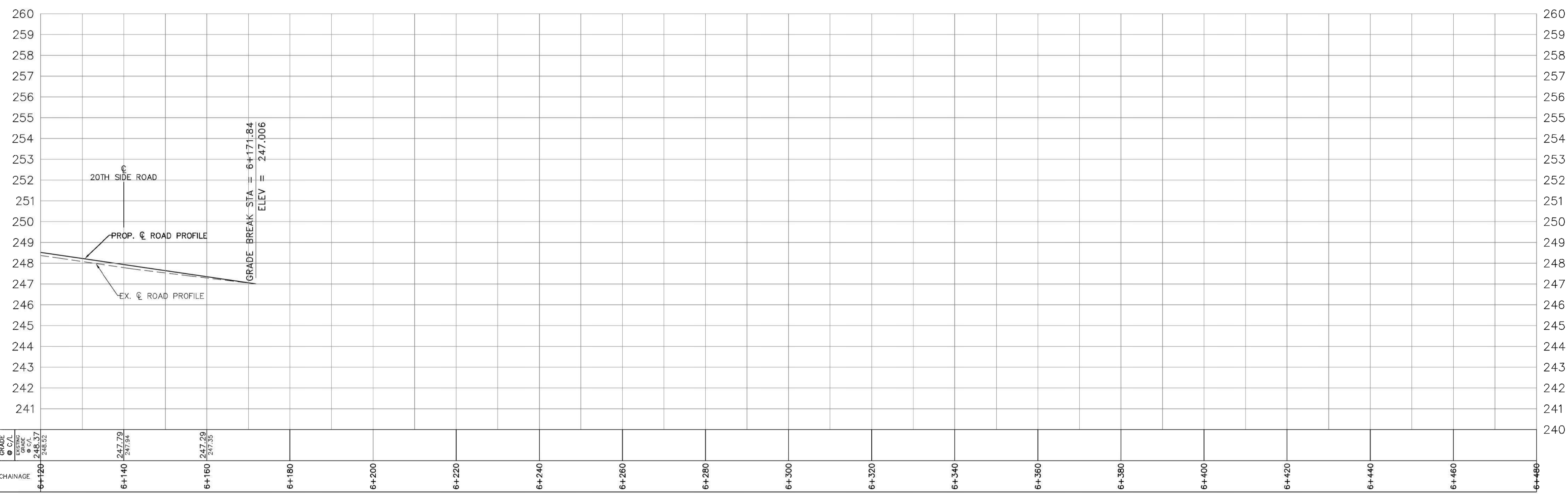
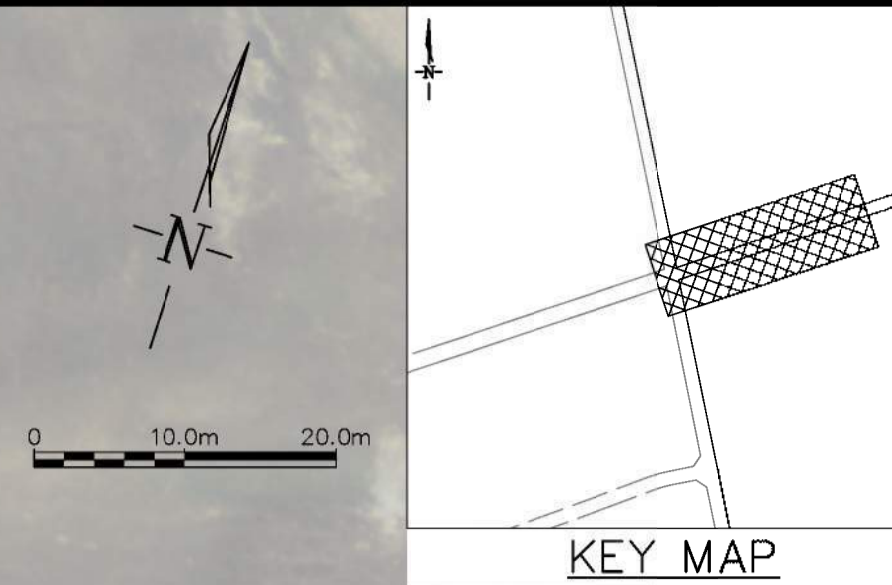
MAPLEVIEW DRIVE EAST WIDENING  
HURONIA ROAD TO 20TH SIDE ROAD  
PLAN & PROFILE  
STA. 5+760 TO STA. 6+120

The City of BARRIE ENGINEERING DEPARTMENT

SCALE HOR. 1:500 VERT. 1:100  
DESIGN MSM DRAWN MSM  
REVIEWED RS DATE 17.02.14

CONTRACT NO. 2017-  
SHEET NO. PP117

# MAPLEVIEW DRIVE EAST



**GENERAL NOTES**  
REFER TO CURRENT CITY OF BARRIE STANDARDS FOR APPLICABLE GENERAL NOTES.



NO.	REVISIONS	DATE	APPROVED
A	ISSUED FOR INTERNAL REVIEW	17.03.01	R.S.
B	ISSUED FOR DRAFT SUBMISSION	17.05.24	R.S.
C	ISSUED FOR FINAL SUBMISSION	17.10.04	R.S.



**CITY OF BARRIE APPROVED**  
DATE: .....  
DIRECTOR OF ENGINEERING

**MAPLEVIEW DRIVE EAST WIDENING**  
HURONIA ROAD TO 20TH SIDE ROAD  
PLAN & PROFILE  
STA. 6+120 TO STA. 6+171.84

*The City of*  
**BARRIE**  
ENGINEERING DEPARTMENT

SCALE HOR. 1:500	VERT. 1:100	CONTRACT NO. 2017-
DESIGN MSM	DRAWN MSM	SHEET NO. PP118
REVIEWED RS	DATE 17.02.14	